

EMERALD VIEW REGIONAL PARK MASTER PLAN

Public Workshop #2
February 8, 2021



WELCOME!
QUICK ZOOM TUTORIAL

Zoom Meeting

Talking:

Meeting Topic:

Merritt Chase's Personal Meeting Room

Host:

Merritt Chase

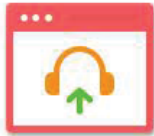
Invite Link:

https://us02web.zoom.us/j/9548814204

Copy Link


Participant ID:

424704




Join Audio

Computer Audio Connected



Share Screen



Invite Others

Please mute your audio,
unless you are talking.

If you'd prefer, use the
chat to type questions.

Unmute

Start Video

Security

Participants 1

Chat

Share Screen

Record

End

Public Workshop Ground Rules

1. Stay present and engaged. Turn off or mute your devices.
2. Listen with an open mind. You can respect another's point of view without agreeing with them. Let people finish their thoughts.
3. Be honest. Say what is on your mind in the meeting, not afterwards.
4. Share the airtime; avoid long-winded stories, detail, and repetition.
5. Take care of yourself. If you need to step out, do it. The group values your participation, so do what you need to do so you can devote your full attention.
6. Stay until the meeting ends.
7. Everyone is responsible for the ground rules. Notice when we've strayed, and speak up.

Public Workshop Outcomes

1. Understanding of what has been done so far and where to find past material
2. Feedback on master plan strategies
3. Understanding of next steps

Public Workshop Agenda

1. Introduce project team and Advisory Committee
2. Review the master plan process and schedule
3. Review what has been done to-date
4. Introduce master plan goals
5. Present master plan strategies for entire park
6. Present master plan strategies for individual geographies and discuss ideas (breakout rooms)

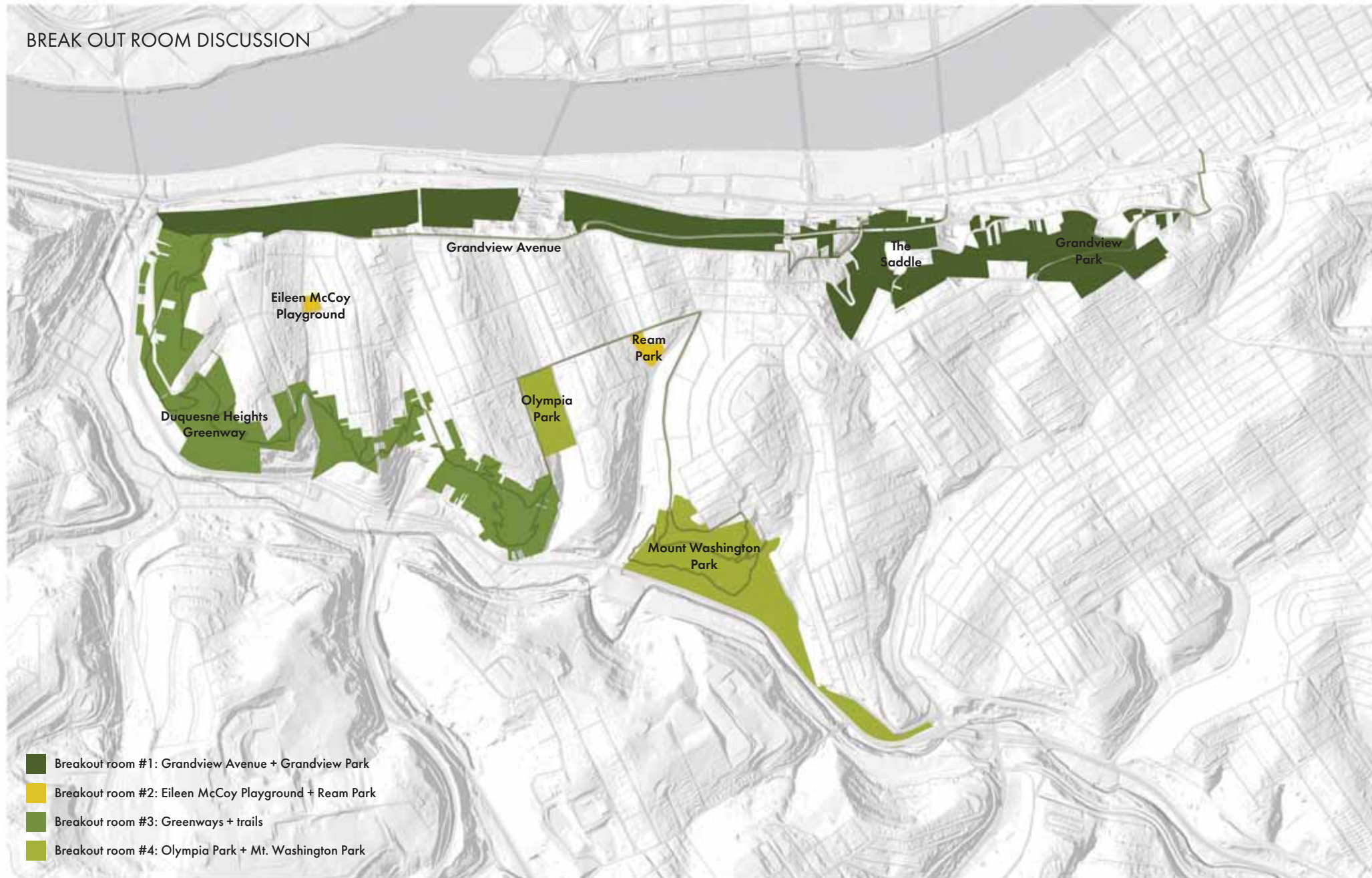
Master plan strategies for the entire park



Master plan strategies for individual geographies (ie: Olympia Park)



BREAK OUT ROOM DISCUSSION



An aerial photograph of Pittsburgh, Pennsylvania, taken from a high vantage point. The foreground is dominated by a dense forest of trees with vibrant autumn foliage in shades of yellow, orange, and green. A railway track runs diagonally through the forest. To the left, a tall, modern skyscraper with a distinctive stepped design stands out against the sky. Below it, several smaller buildings are visible. In the background, the city of Pittsburgh is spread out along the banks of a wide river. A prominent yellow arch bridge spans the river. The sky is a clear blue with some light clouds. The word "INTRODUCTIONS" is overlaid in white capital letters in the center of the image.

INTRODUCTIONS

INTRODUCTIONS

Project Team

- City of Pittsburgh Department of City Planning
- Pittsburgh Parks Conservancy

Design Team

- Merritt Chase (Lead)
Landscape Architecture
- Mon-Win Consulting
Public Engagement
- Spackman Mossop Michaels
Park + Stormwater Planning
- Civil & Environmental Consultants
Ecology + Engineering
- Bohlin Cywinski Jackson
Architecture

INTRODUCTIONS

Advisory Committee

- Allentown CDC
- City Council Office
- Council District 2, Theresa Kail-Smith
- Council District 4, Anthony Coghil
- Department of Mobility and Infrastructure
- Department of Public Works
- Hilltop Alliance
- Mayor's Office
- Mount Washington CDC
- Mount Washington Community Garden
- Neighbors on the Mount
- Office of Management & Budget
- Pittsburgh Water and Sewer Authority
- Public Safety (Park Rangers)
- Ream Recreation Center
- Washington Heights Athletic Association

An aerial photograph showing a dense residential neighborhood with many houses, interspersed with large green trees. In the foreground, there is a large, open green space with a baseball field and a soccer field. The text "EMERALD VIEW REGIONAL PARK MASTER PLAN" is overlaid in white, bold, sans-serif font in the center of the image.

EMERALD VIEW REGIONAL PARK MASTER PLAN

Master Plan Purpose

- Communicate the community's vision for a cohesive regional park
- Consolidate recommendations from past planning efforts
- Guide Emerald View Park's future physical development with conceptual design recommendations, a phasing plan, and cost estimates
- Ensure that individual park improvements and day-to-day decisions fit within a larger vision
- Ensure that fundraising and implementation are properly sequenced and contribute to long-term goals
- Inspire local stewardship and build momentum for future project implementation

EMERALD VIEW REGIONAL PARK MASTER PLAN

City of Pittsburgh Park Master Plan Example: South Side Park Master Plan

MASTER PLAN - Overview

1. Parcel acquired for green infrastructure
2. Renovated parking (30 spots)
3. Drive
4. ADA-accessible boardwalk
5. Parking (60 spots)
6. Shared-use (biker) path
7. Community event area
8. Open-air pavilion over small building (includes bathrooms)
9. Amphitheater
10. Lawn
11. Paved push-ramp for cyclists and green infrastructure detention cells
12. Renovated entrance with parking (3 spots)
13. Children's Discovery Garden
14. Basketball court + marble rings
15. Resurfaced rectangular field with subsurface detention
16. Embankment bleachers
17. Renovated bathrooms, concessions, scoreboard
18. Parking (40 spots)
19. Public art opportunity
20. BMX pump track (third-party operator)
21. Trail for BMX access
22. Embankment slides
23. Ropes course (third-party operator)
24. Embankment bleachers and new scoreboard
25. Sculptural overlook + parking (8 spots)
26. Basketball court and play area renovations
27. Renovate Arlington Rec Center
28. Manage invasive species with native planting
29. Seating at Jurassic Valley Overlook
30. 1040 Trail and interpretive art



Physical master plan



Phasing plan

EMERALD VIEW REGIONAL PARK MASTER PLAN
PITTSBURGH'S REGIONAL PARK CONTEXT

Riverview
Park

Highland
Park

Frick
Park

Schenley
Park

Emerald
View
Park



EMERALD VIEW REGIONAL PARK MASTER PLAN
EMERALD VIEW REGIONAL PARK MASTER PLAN AREAS OF FOCUS

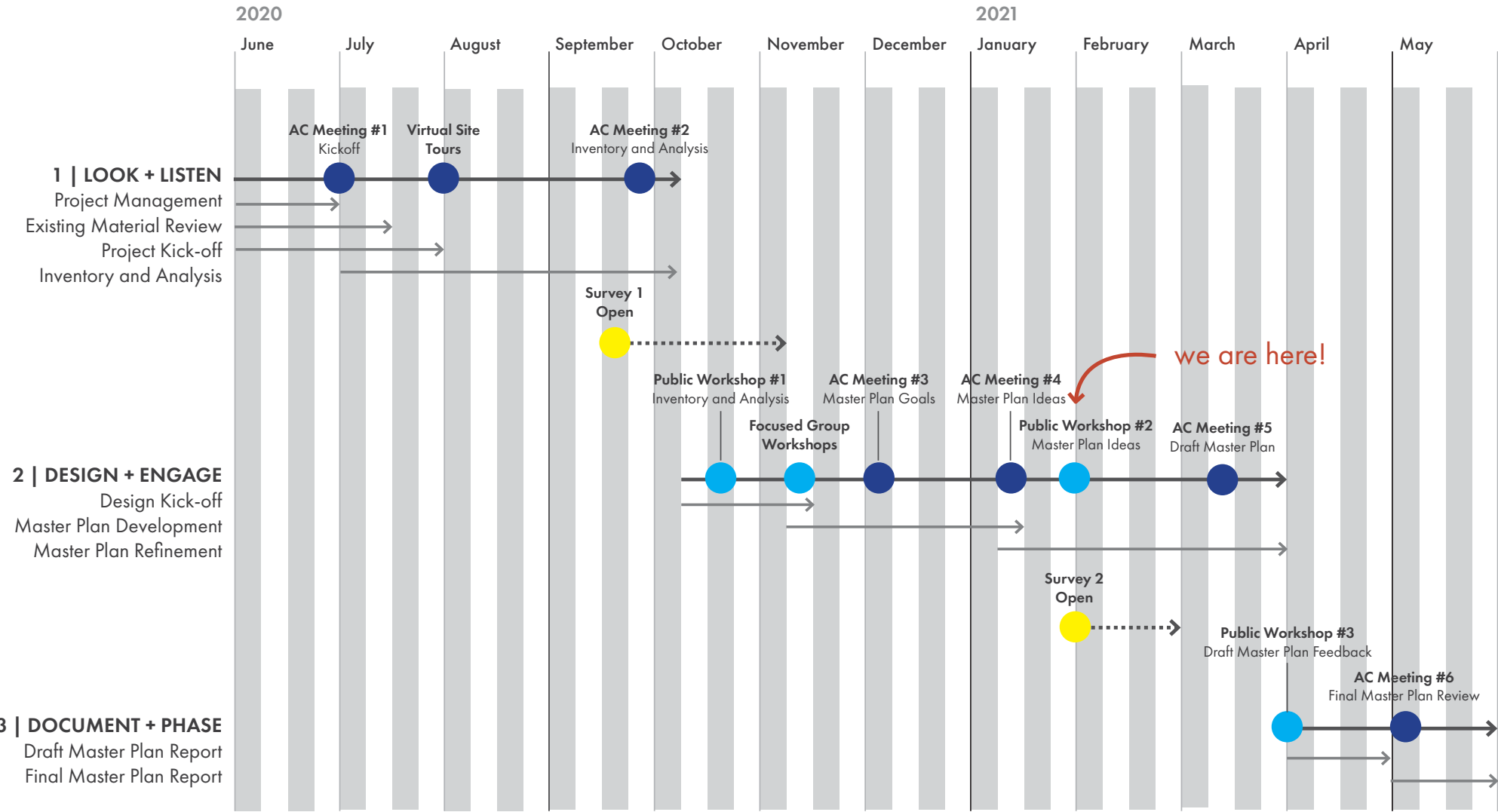


An aerial photograph of Pittsburgh, Pennsylvania, featuring a large forested hill in the foreground with a railway line running through it. To the left, a tall, modern building with a unique, stepped design stands out. In the background, the city skyline is visible, including the iconic yellow arch bridge spanning the river. The sky is blue with scattered clouds.

SCHEDULE

PROJECT SCHEDULE

- ADVISORY COMMITTEE
- PUBLIC WORKSHOPS



An aerial photograph of a city neighborhood. In the foreground, a residential area with houses and trees is visible. A large, rectangular, light blue pool is situated in a grassy area. In the background, a dense urban skyline with various skyscrapers is visible under a clear blue sky. The text "WHAT WE'VE LEARNED" is overlaid in the center of the image.

WHAT WE'VE LEARNED

WHAT WE'VE LEARNED

Site Visits

EngagePGH (survey, etc)

Inventory + Analysis

Public Meetings + Workshops

WHAT WE'VE LEARNED
Site Visits



WHAT WE'VE LEARNED

Virtual Site Tours

Virtual site tours themes

- Anchor Parks and Programming
- Business Districts
- Greenway and Trails
- Landslides
- Outdoor Recreation

Virtual site tours participants

- Mayor's Office | Henry Horn-Pyatt
- Hilltop Alliance | Aaron Sukenik
- DPW | Andrea Ketzel
- Ream Rec Center | John Macellaro
- Athletic Association | Matt Smith
- Duquesne University | Eva Simms
- DOMI | Eric Setzler
- Pittsburgh City Ranger | Zach Zelazny
- DPW - Forestry Division | Lisa Ceoffe
- BikePGH | Anna Tang
- Venture Outdoors | Ashley Martin
- Landforce | Ilyssa Manspeizer



WHAT WE'VE LEARNED

EngagePGH

[Home](#)[Projects](#)[Log In / Join](#)[Search](#)

Emerald View Regional Park Master Plan

Through this master planning process, we will set a community vision for the future of the park, along with a phasing plan to realize desired improvements.

[+ Follow](#)[Home](#) / [Emerald View Park Master Plan](#)

Emerald View Park Master Plan

Emerald View Park is a 250-acre regional park located in the City of Pittsburgh's Mount Washington, Duquesne Heights, and Allentown neighborhoods. Emerald View Regional Park is the most recent addition to Pittsburgh's regional park system. Pittsburgh's regional parks, including Frick Park, Schenley Park, Highland Park, and Riverview Park, are vital cultural and ecological assets, each with unique identities that contribute to the City's iconic urban landscape. Emerald View Park includes a variety of public open spaces, greenways, trails, Grandview Avenue, and multiple neighborhood parks (Olympia Park, Mt. Washington Park, Grandview Park, Eileen McCoy Park, and Ream Park). The Emerald View Park Regional Master Plan will guide the future of the park. The goal is to connect the park's ecology, history, and culture in order to preserve the park's significance.

Who's Listening?



Kara Smith, PLA
Department of City Planning

Project Manager /
Environmental Planner

[Email](#)

WHAT WE'VE LEARNED
EngagePGH | Spreading the word



Socially distanced intercept surveys



Yard signs in parks

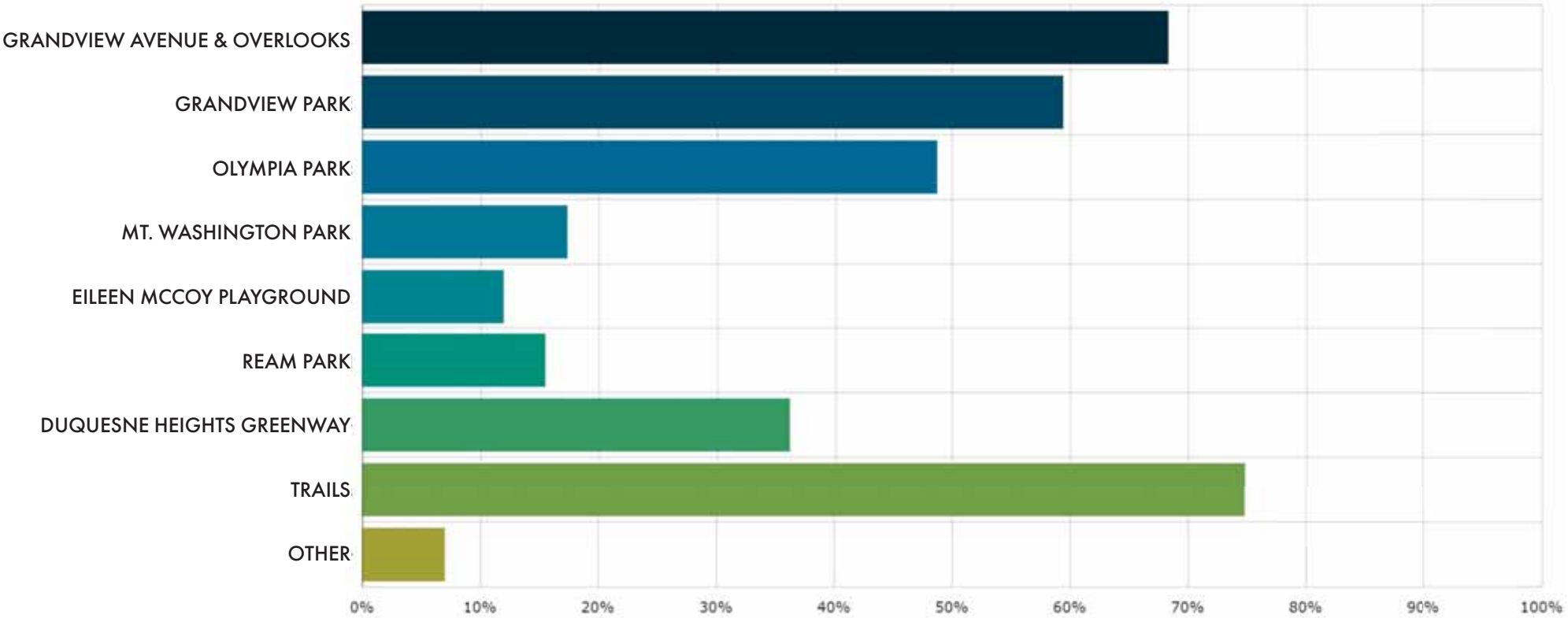


Door hangers



Signs in parks

Where do you go within Emerald View Park?



*The survey question allowed the respondent to select multiple options; totals exceed 100%

WHAT WE'VE LEARNED

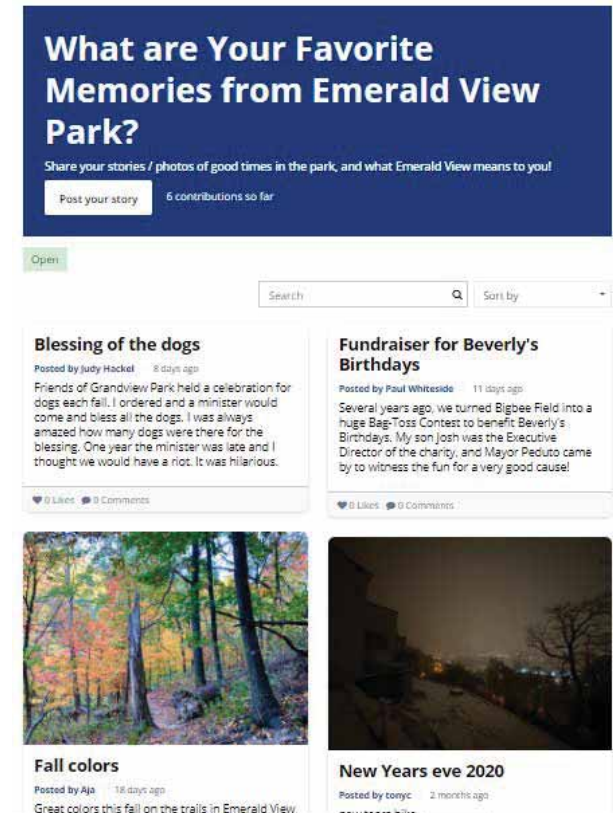
EngagePGH | Public Survey Results

Dream big! What is your big idea for the future of Emerald View Park?

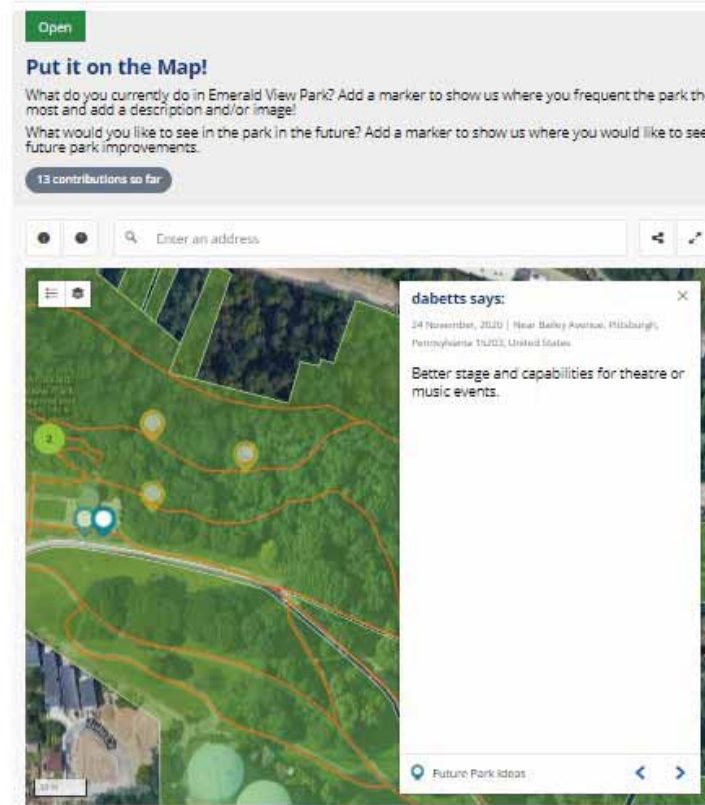


WHAT WE'VE LEARNED

EngagePGH | Additional Activities



Memory sharing



Site specific recommendations



Kids activity

WHAT WE'VE LEARNED

Inventory + Analysis

HISTORY

- Park evolution
- Past planning
- Ongoing projects

CONNECTIVITY

- Individual parks
- Circulation
- Entrances
- Accessibility

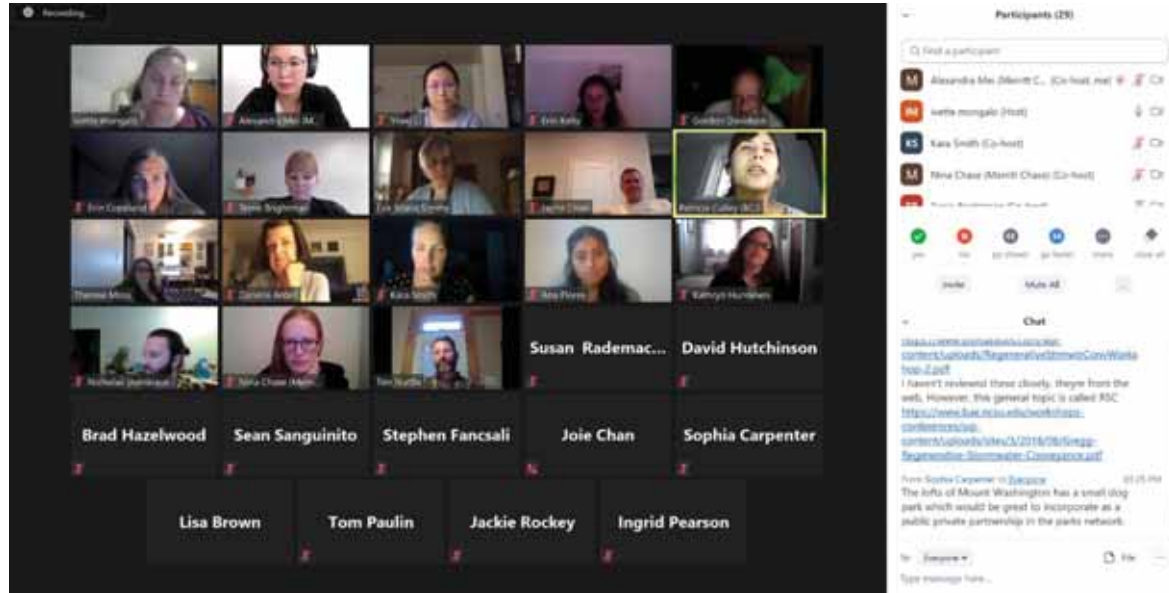
COMMUNITY

- Demographics
- Partners
- Destinations
- Programming

ECOLOGY

- Forest Health
- Wildlife
- Natural Resources
- Stormwater
- Topography
- Landslides

WHAT WE'VE LEARNED
Public Meeting #1
October 22, 2020



What comes to mind when you think of Emerald View Park?

- Trails, all part of "zoo of pearls"
- long linear, trail oriented
- didn't recognize the name before the master plan
- how can it possibly be 250 acres???
- so much great work in progress
- not a lot of open area for big events

What could be improved at Emerald View Park?

- Where do most people start?? key entry points
- trail map PDF, difficulty
- signage
- you can see trails but not sure where they go, where they end

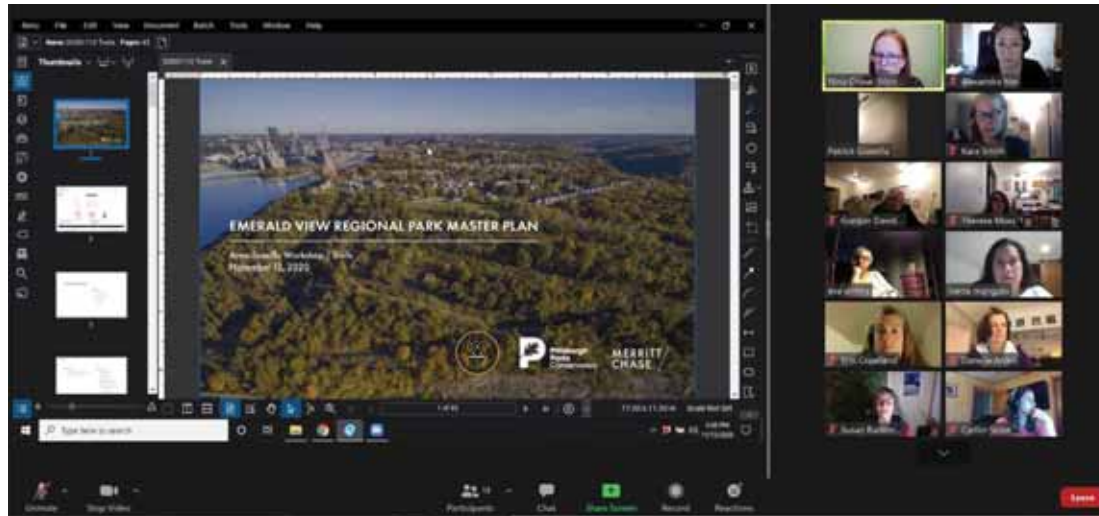
What is your big idea for the future of Emerald View Park?

- better connection points for public transit and incline transit modes
- walking up and down PJ McArdle, part of the
- concerts and music events
- Connectivity, front to back
- central event place on south side of river, gathering point

Breakout Room #2 - MURAL Board

WHAT WE'VE LEARNED

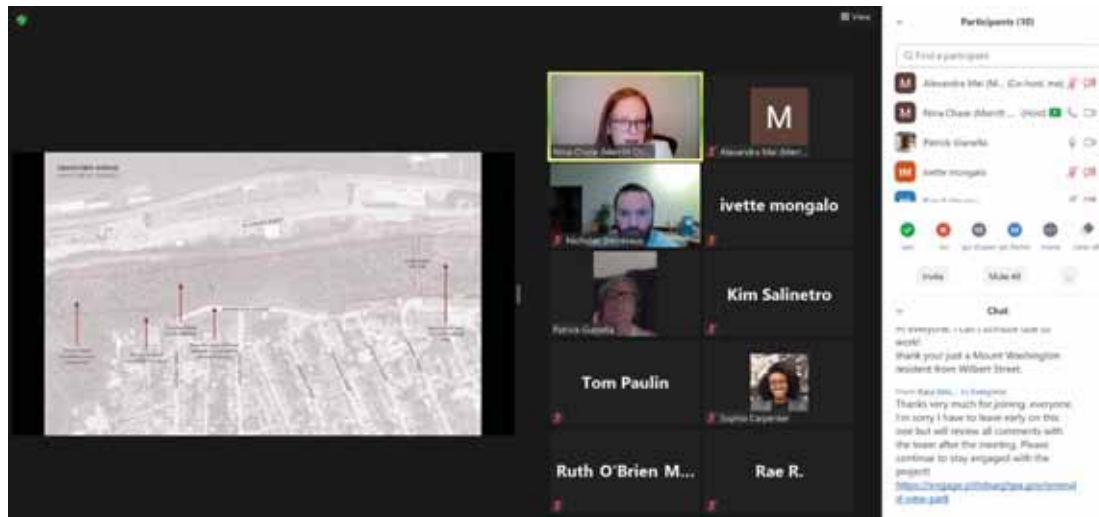
Focused Group Workshops



Trails Workshop, November 12th



Olympia Park Workshop, November 9th

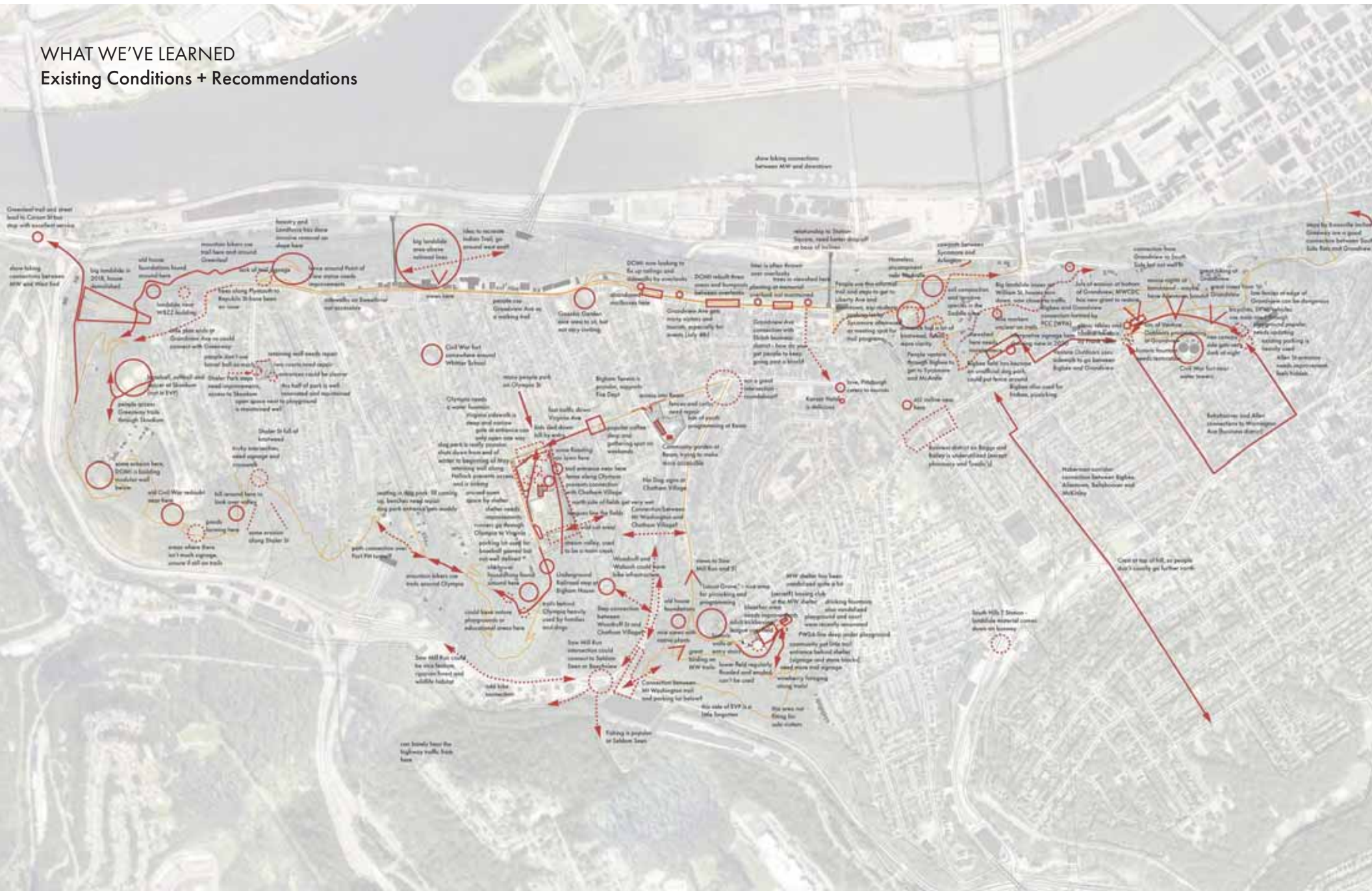


Grandview Avenue Workshop, November 10th



Ream Park & Eileen McCoy Playground Workshop, November 12th

WHAT WE'VE LEARNED
Existing Conditions + Recommendations



MASTER PLAN GOALS & DESIGN STRATEGIES

PAST PLANS

2002 Emerald Link Plan

- An important recreational and educational asset to our existing residents
- An additional incentive for homebuilders, buyers and rehabbers
- An economic stimulator for Mount Washington businesses
- A captivating experience for our 1.5 million tourists each year

2005 GVSB Master Implementation Plan

- Focus not just on linking 6 areas but also on what green space does for community health, economic vitality, and ecological functions
- Access for all residents to all types of green space
- Grandview Park, Grandview Overview Park, Olympia Park, Mount Washington Park all maintain their individual identities but become part of the larger regional park

2005 GVSB Corridor Management Plan

- Create a warm and welcoming visitor experience
- Ensure continual community participation in the process
- Improve the infrastructure of the byway
- Preserve and enhance green space
- Develop overall cohesive and cooperative design plan

2010 Emerald View Park Trail Plan

- To establish connections between the trail network and other regional/city trails, as well as destinations, local commercial districts, recreational amenities, and neighborhoods.
- To create a trail network that will provide a multitude of experiences for various recreational users at all ages, skill levels and during all seasons.
- To develop a sustainable trail network that coincides with the ecological goals for the Park.

THEMES

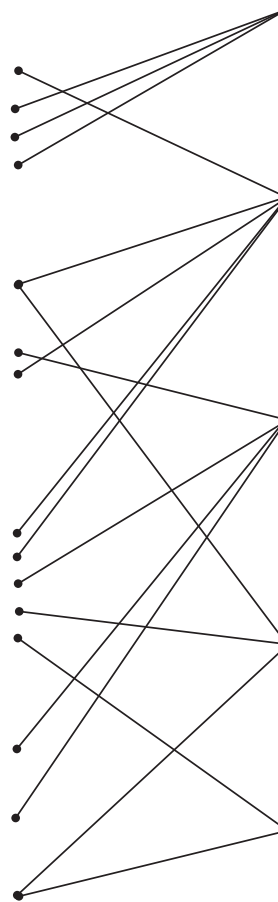
Regional tourism and economic vitality

Community recreation and well being

Accessibility and connectivity

Ecological function

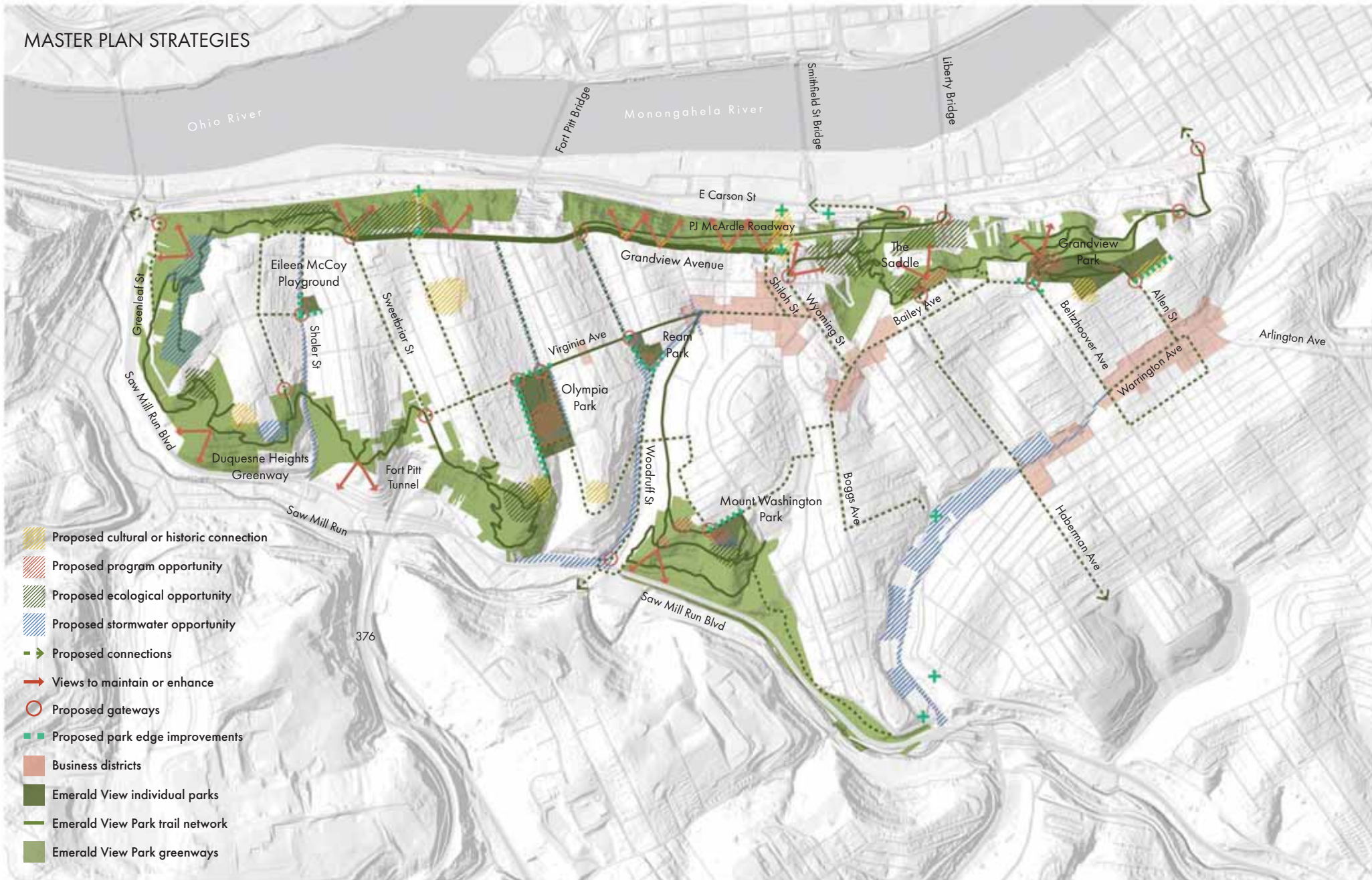
Sustainable management and implementation



MASTER PLAN GOALS

1. **Preserve** the park's significance as a collection of neighborhood amenities
2. **Elevate** the park's identity as a regional destination
3. **Connect** individual features into a safe and accessible park system
4. **Restore** the park's ecological performance
5. **Build** momentum for the future of the park

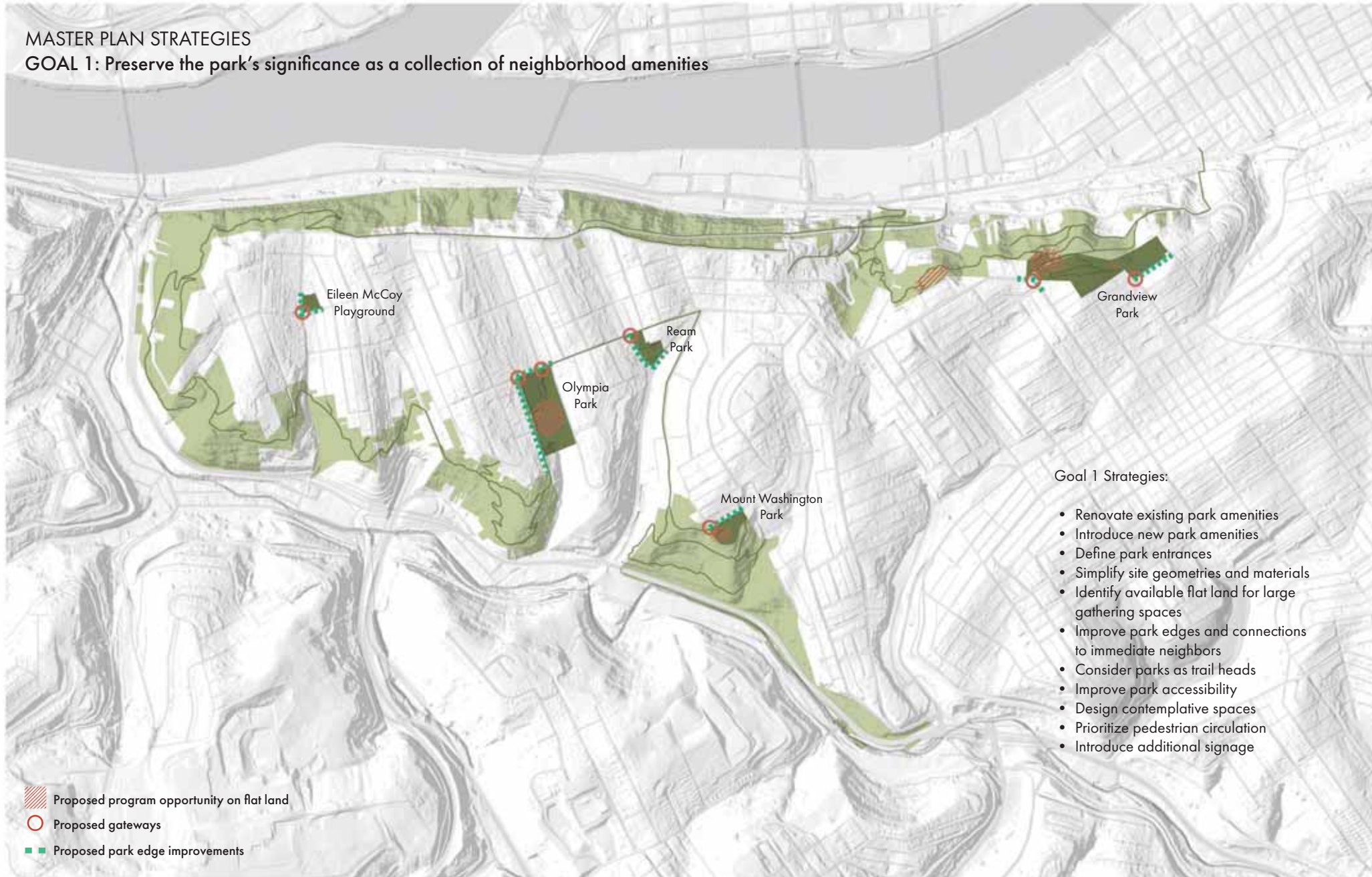
MASTER PLAN STRATEGIES



GOAL 1: Preserve the park's significance as a collection of neighborhood amenities

MASTER PLAN STRATEGIES

GOAL 1: Preserve the park's significance as a collection of neighborhood amenities



MASTER PLAN STRATEGIES

Renovate existing park amenities and introduce new park amenities (to be discussed in more detail in the breakout rooms)



MASTER PLAN STRATEGIES

Define park entrances and simplify geometries and materials



Renovate existing stone walls and stairs. Take inspiration from original, historic Emerald View Park material palette of stone, belgian block, brick, and asphalt.

MASTER PLAN STRATEGIES

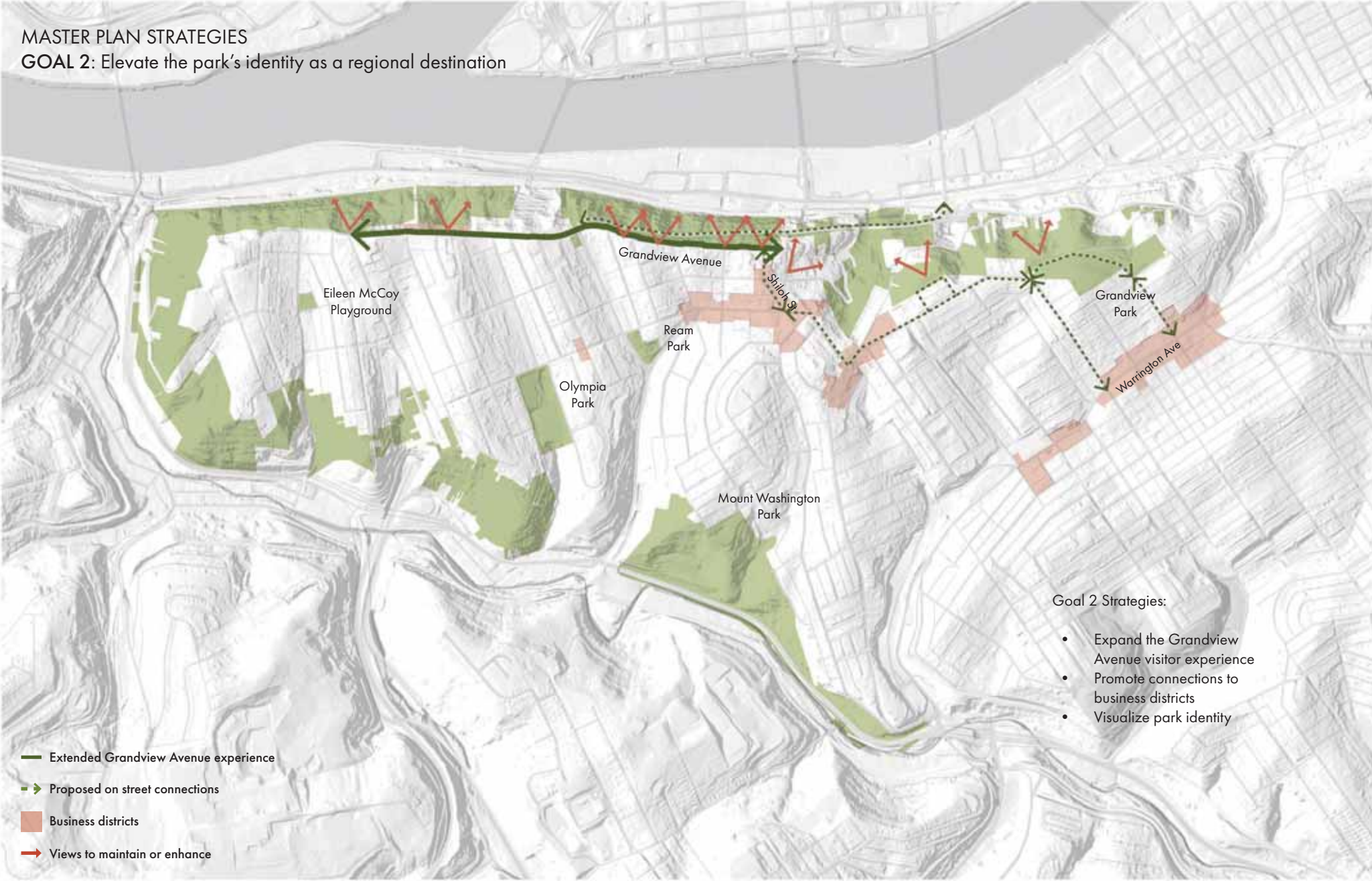
Define park entrances and simplify geometries and materials



Introduce contemporary uses of traditional materials including belgian blocks, asphalt, stone, and brick.

GOAL 2: Elevate the park's identity as a regional destination.

MASTER PLAN STRATEGIES
GOAL 2: Elevate the park's identity as a regional destination



MASTER PLAN STRATEGIES

Expand the Grandview Avenue visitor experience



Grandview Avenue Overlooks (East)



Grandview Avenue Point of View Statue (West)

Renovate the Grandview Avenue streetscape from East to West to include clear views, wider pedestrian access, renovated historic elements (overlooks, railings), gateways, and gathering spaces.

MASTER PLAN STRATEGIES

Expand the Grandview Avenue visitor experience

Streetscape and paving precedent



Overlook and framed view precedent



Overlook precedent



Renovate the Grandview Avenue streetscape from East to West to include clear views, wider pedestrian access, renovated historic elements (overlooks, railings), gateways, and gathering spaces.

MASTER PLAN STRATEGIES

Expand the Grandview Avenue visitor experience



Recent investment along Grandview Avenue has included new lighting, speed humps, and renovated elevated walks.

However, the sidewalks are narrow, connections to the West are unclear and uncomfortable, views are obscured due to lack of vegetation maintenance, and connections to the business districts are not obvious.

MASTER PLAN STRATEGIES

Expand the Grandview Avenue visitor experience



Design Idea #1

Widen sidewalk, improve connections to business districts, maintain vegetation, introduce seating and other site furniture

MASTER PLAN STRATEGIES

Expand the Grandview Avenue visitor experience



Design Idea #2

Renovate Grandview Avenue streetscape with new paving, widen sidewalk, improve connections to business districts, maintain vegetation, introduce seating and other site furniture

MASTER PLAN STRATEGIES

Visualize park identity

Existing Emerald View Park medallion



Park identity precedent



Park identity precedent



Park identity precedent

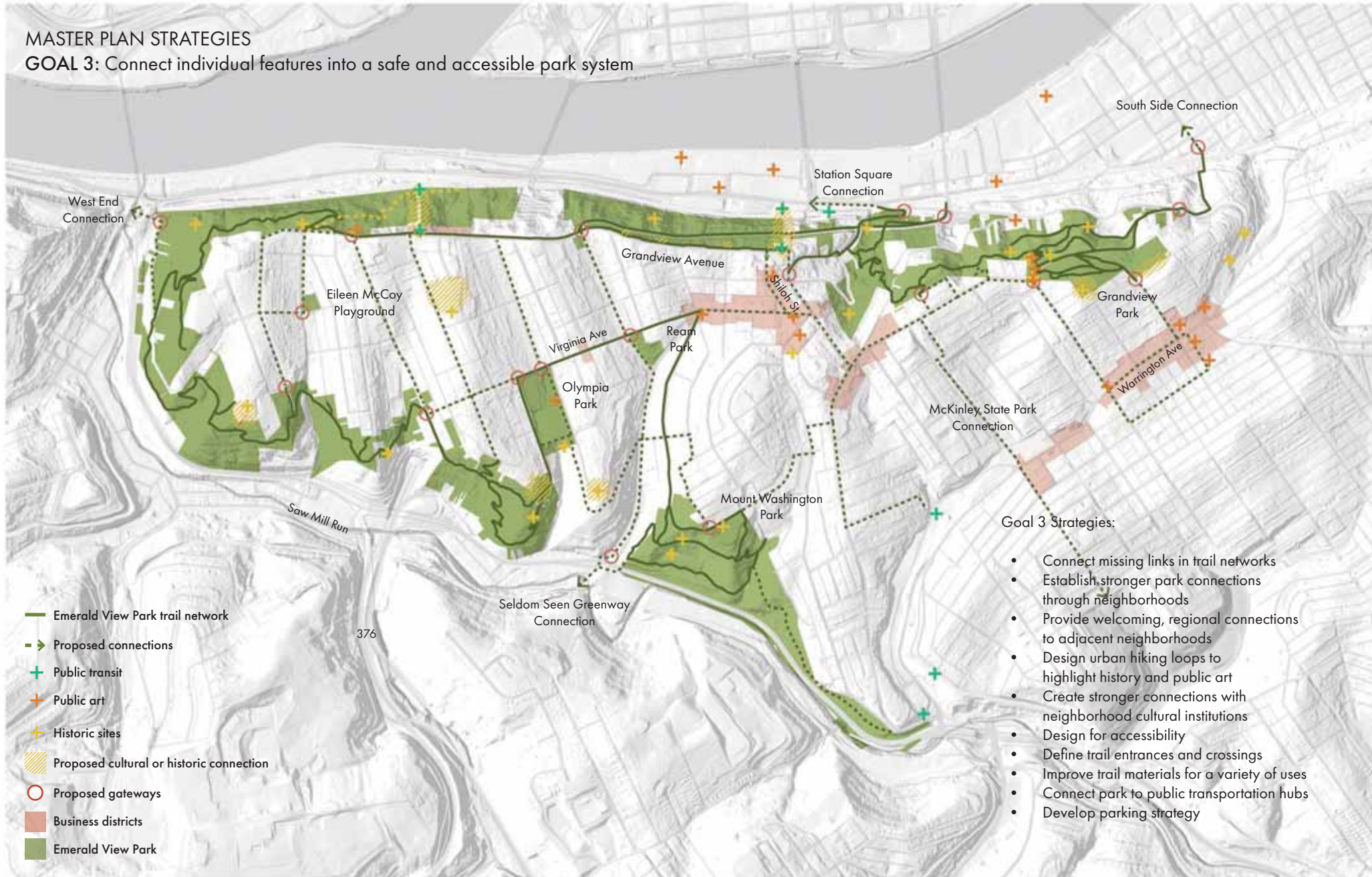


Build upon the Emerald View Park identity with visual cues in the parks and streets. Develop material palette that is easily recognizable and intriguing.

GOAL 3: Connect individual features into a safe and accessible park system.

MASTER PLAN STRATEGIES

GOAL 3: Connect individual features into a safe and accessible park system



MASTER PLAN STRATEGIES

Define trail entrances and crossings



Many street end trail entrances and trail crossings are unmarked and difficult to navigate

MASTER PLAN STRATEGIES

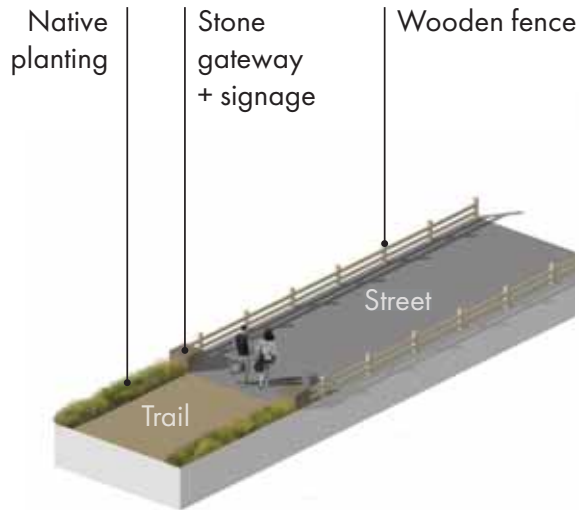
Define trail entrances



Define trail entrances with stone walls, gathering spaces, wayfinding, and unique seasonal plantings

MASTER PLAN STRATEGIES

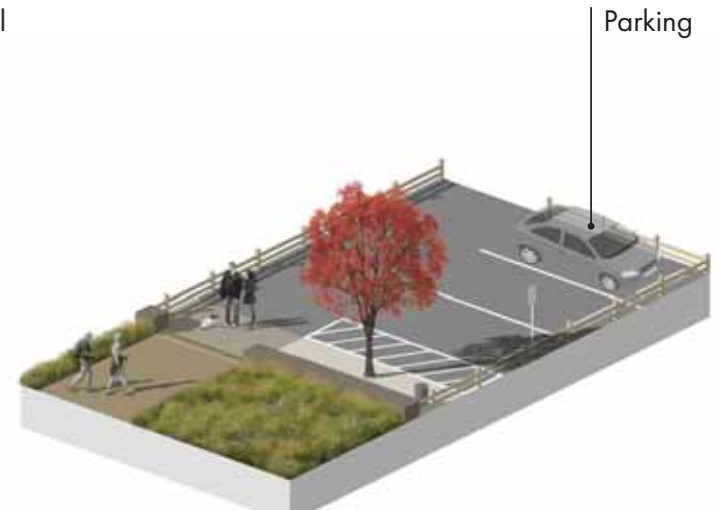
Define trail entrances



Typical trail entrance



Typical trail entrance
with gathering space



Typical trail entrance
with gathering space + parking

Incorporate stone walls, gathering spaces, wayfinding, and unique seasonal plantings

(references: Emerald View Park Trail Master Plan, OpenSpacePGH, and Greenways for Pittsburgh Resource Guide)

MASTER PLAN STRATEGIES

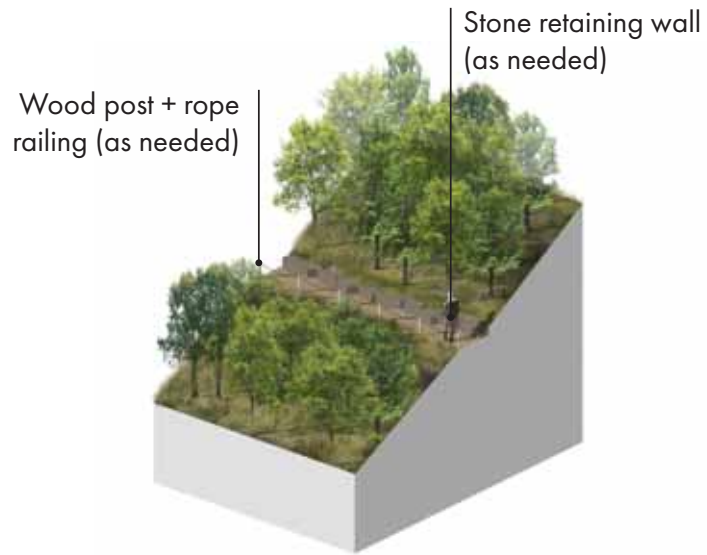
Improve trail materials for a variety of uses



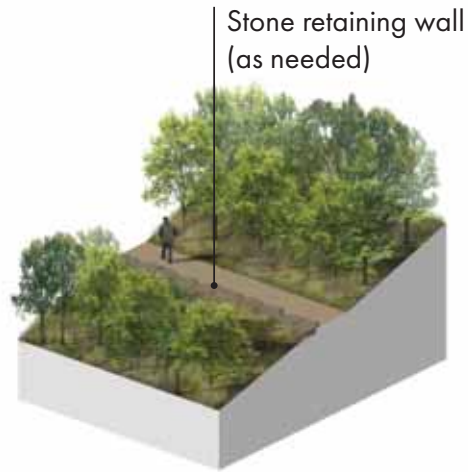
Integrate boulders, wood decking, and wooden railings to stabilize trail edges, create seating areas, and provide safe stream/steep crossings.

MASTER PLAN STRATEGIES

Improve trail materials for a variety of uses



Advanced Trail (<20% slope)



Intermediate Trail (5-10%)



Easy Trail (0-5%)



Stepping Stone Trail



Wood boardwalk Trail



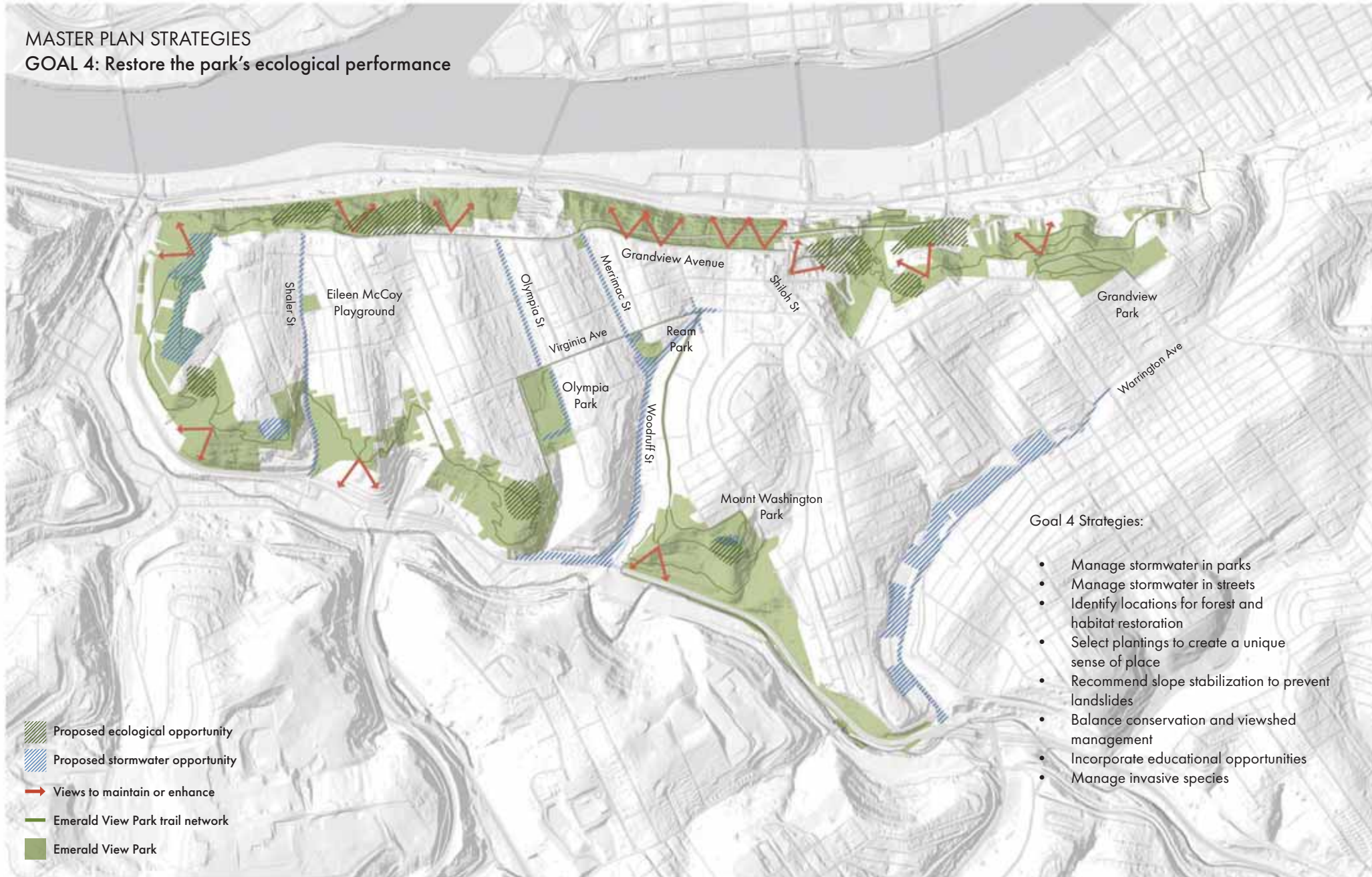
Sidewalk Trail

(references: Emerald View Park Trail Master Plan, OpenSpacePGH, and Greenways for Pittsburgh Resource Guide)

GOAL 4: Restore the park's ecological performance.

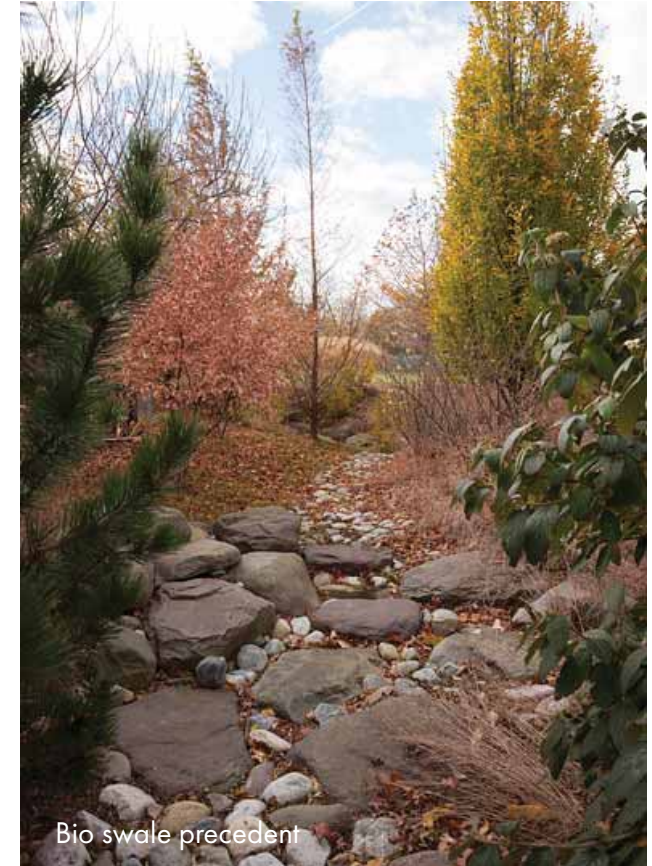
MASTER PLAN STRATEGIES

GOAL 4: Restore the park's ecological performance



MASTER PLAN DESIGN STRATEGIES

Manage stormwater in parks



Incorporate bioswales and rain gardens with native plants and educational signage into the park landscapes. Due to acid mine drainage and undermining, design green infrastructure to slow down peak flows during rain events with weirs and surface detention as opposed to infiltration.

MASTER PLAN DESIGN STRATEGIES

Manage stormwater in streets

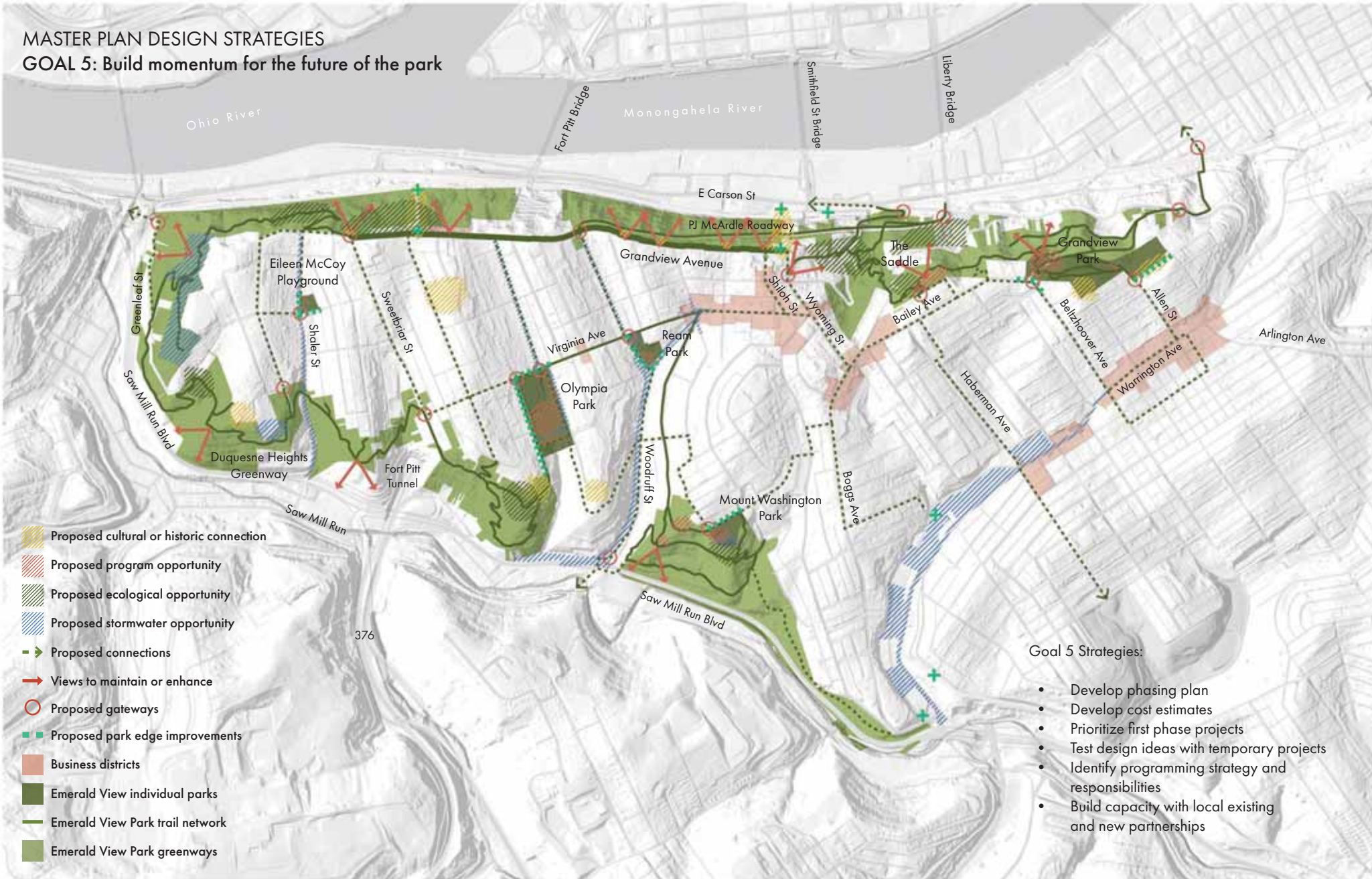


Introduce on-street bioswales with native plants into neighborhood streets. Due to narrow streets, bump-out bioswales are recommended.

GOAL 5: Build momentum for the future of the park.

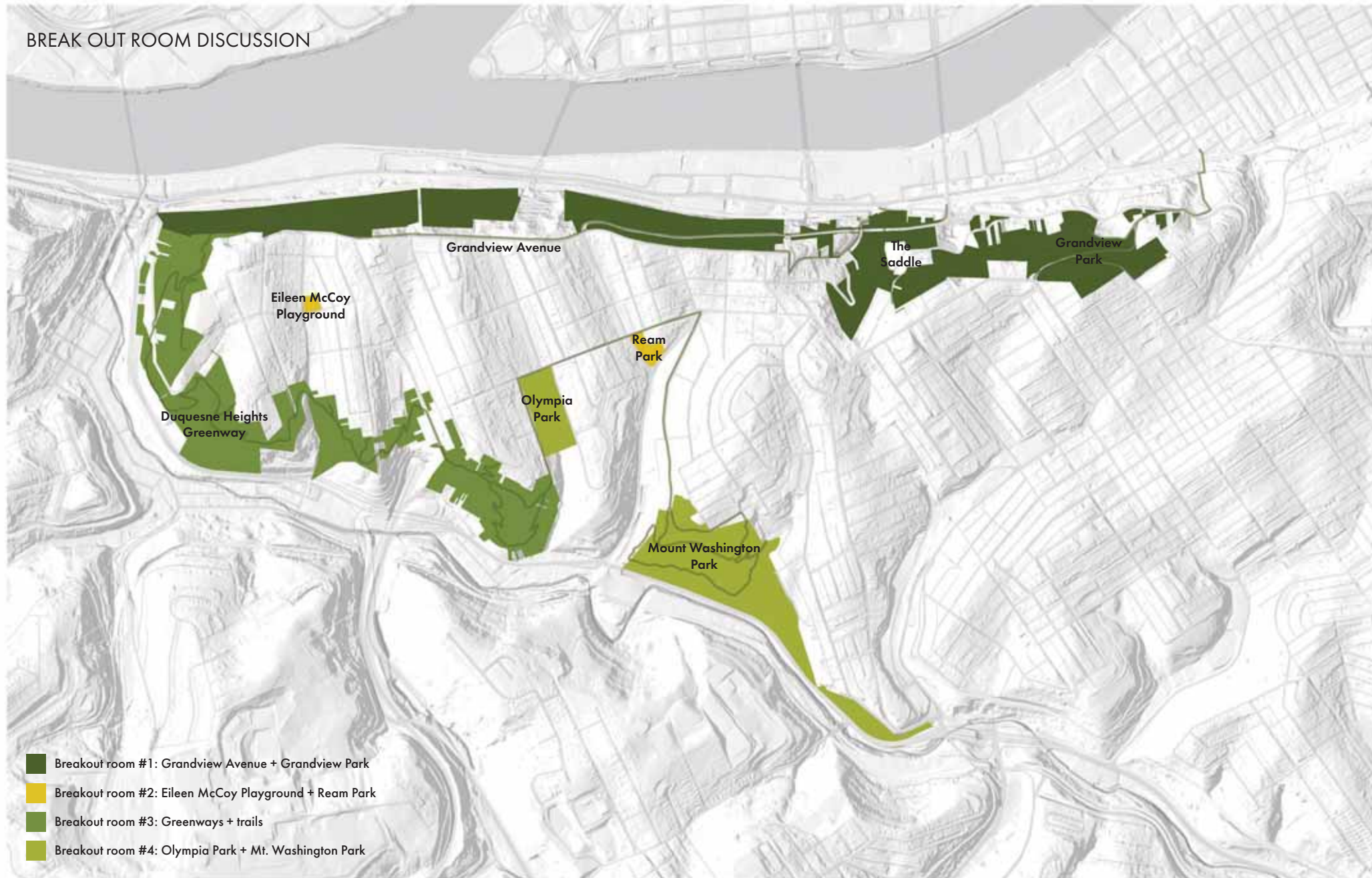
MASTER PLAN DESIGN STRATEGIES

GOAL 5: Build momentum for the future of the park



BREAK OUT ROOM DISCUSSION

BREAK OUT ROOM DISCUSSION

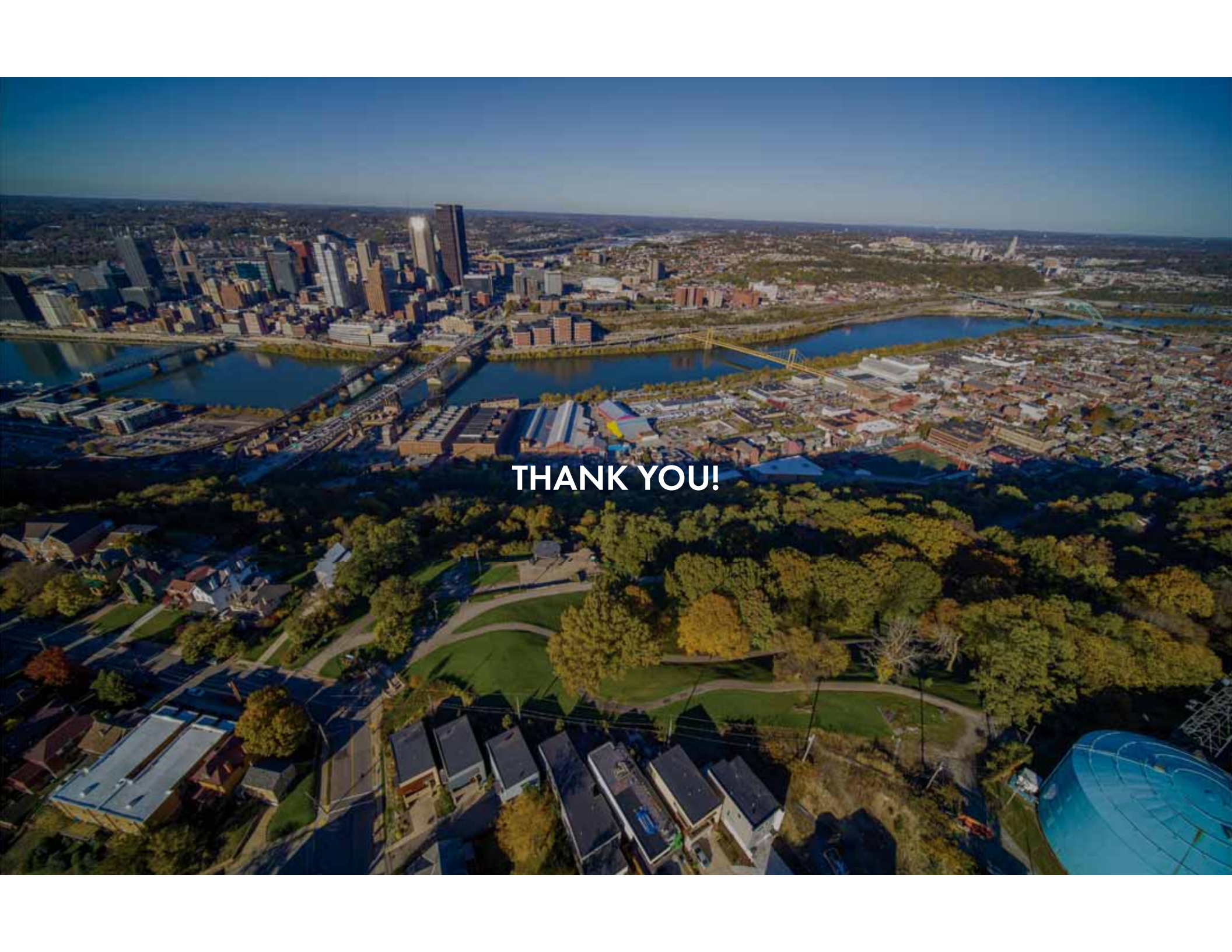


An aerial photograph of a suburban neighborhood during autumn. The scene shows a mix of residential houses, some with blue roofs and others with grey or brown roofs. There are many trees with yellow and orange foliage. In the foreground, there is a playground with blue and red equipment. A road with a few cars runs through the middle of the neighborhood. In the background, a tall radio tower is visible against a clear blue sky. The text "NEXT STEPS" is overlaid in the center of the image.

NEXT STEPS

Next Steps

1. Provide feedback on tonight's presentations on EngagePGH by February 22nd
2. Design team will utilize feedback to update design ideas, create phasing plans, and cost estimates
3. Draft Master Plan will be available for review and comment in April at Public Workshop #3. Updates will be posted on EngagePGH



THANK YOU!