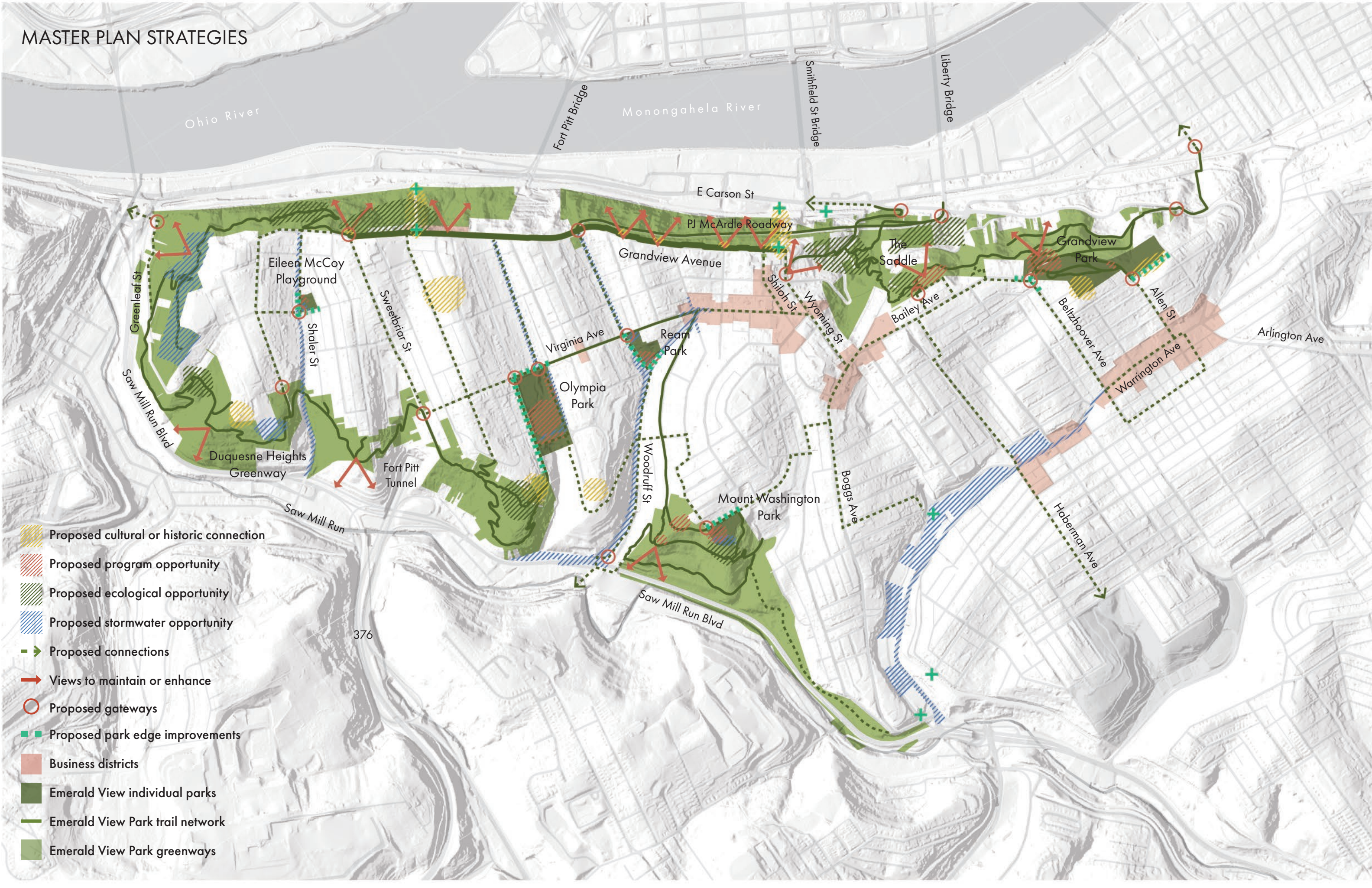


OLYMPIA PARK + MT. WASHINGTON PARK

Breakout Room Agenda

1. Introductions
2. Open time for questions and feedback on Master Plan goals and design strategies (15 mins)
3. Presentation and discussion of design ideas for Olympia Park and Mt. Washington Park (30 mins)

MASTER PLAN STRATEGIES



OLYMPIA PARK

MASTER PLAN STRATEGIES | OLYMPIA PARK
What we heard + observed



OLYMPIA RD

Current flooding,
potential location for
green infrastructure,
historic location of stream
and current location of
ALCOSAN trunk line

Hillside is
underutilized, desire
for nature play trail

Desire for connections to Chatham
Village and trail network

Entrance is dangerous
and prioritizes
vehicular access, no
drop off or ADA access

Existing pavilion and
shelter plaza are
underutilized

Underutilized
space, desire for
contemplative space
and trail around field

Main path feels
like a road

Olympia Park shelter
renovation needed, include
restrooms and flexible
community space

Desire for multi-purpose field
for large events, one of few
spaces in EVP with flat land

Existing materials
are deteriorating

Dog park is very popular
and well used

Seating areas in dog
park are muddy due to
stormwater and use

Desire for running track
around field

Dog park
entrances are
muddy

Parking is not
ADA accessible

Desire for stronger
park gateway and
trail entrance

Sidewalk ends,
entrance not clear

HALLOCK ST

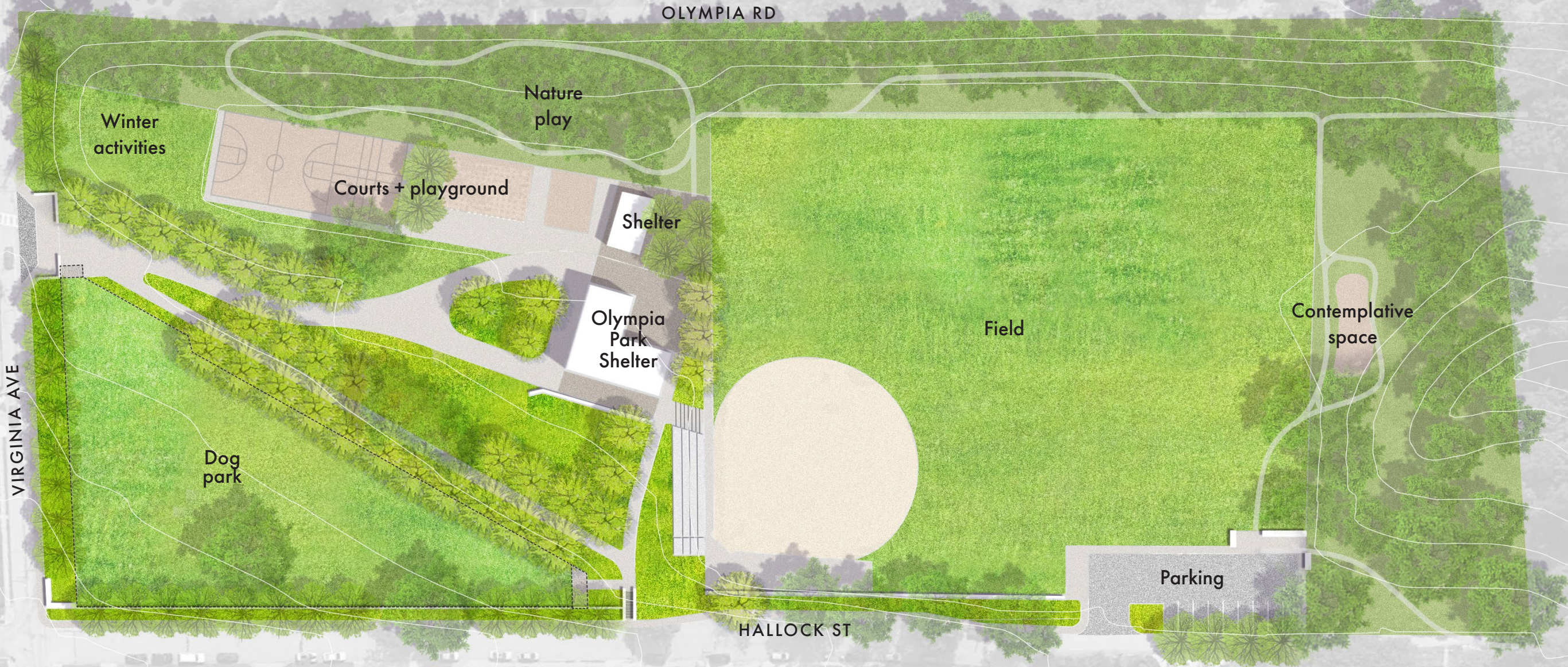
Entrance to
trail is unclear

VIRGINIA AVE



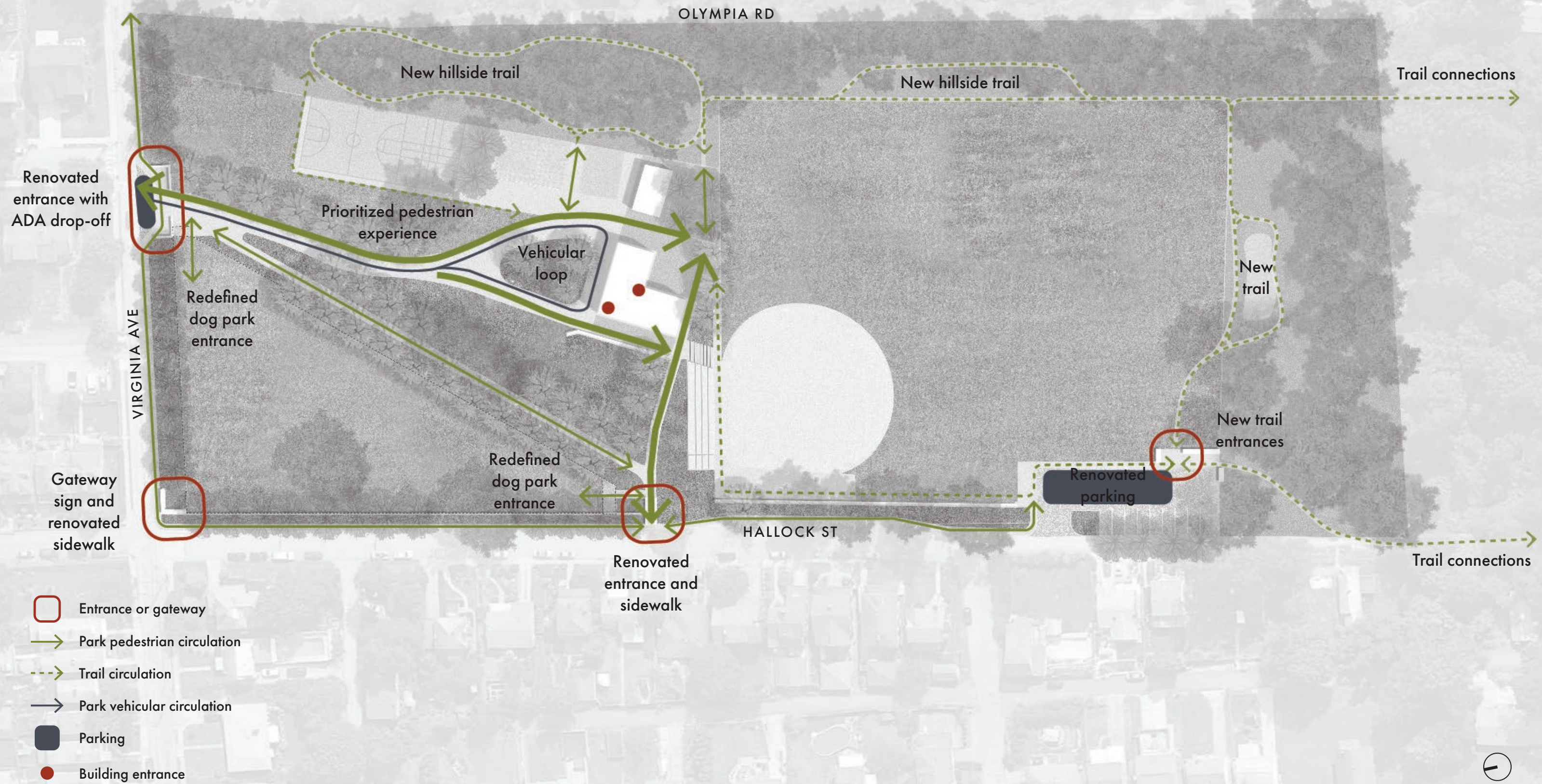
MASTER PLAN STRATEGIES | OLYMPIA PARK

Renovate existing park amenities and introduce new park amenities



MASTER PLAN STRATEGIES | OLYMPIA PARK

Define park entrances, improve park edges and connections to immediate neighbors, consider parks as trail heads, improve park accessibility, prioritize pedestrian circulation, and introduce additional signage



MASTER PLAN STRATEGIES | OLYMPIA PARK

Define park entrances, improve park edges and connections to immediate neighbors, consider parks as trail heads, improve park accessibility, prioritize pedestrian circulation, and introduce additional signage



Hallock Street Entrance

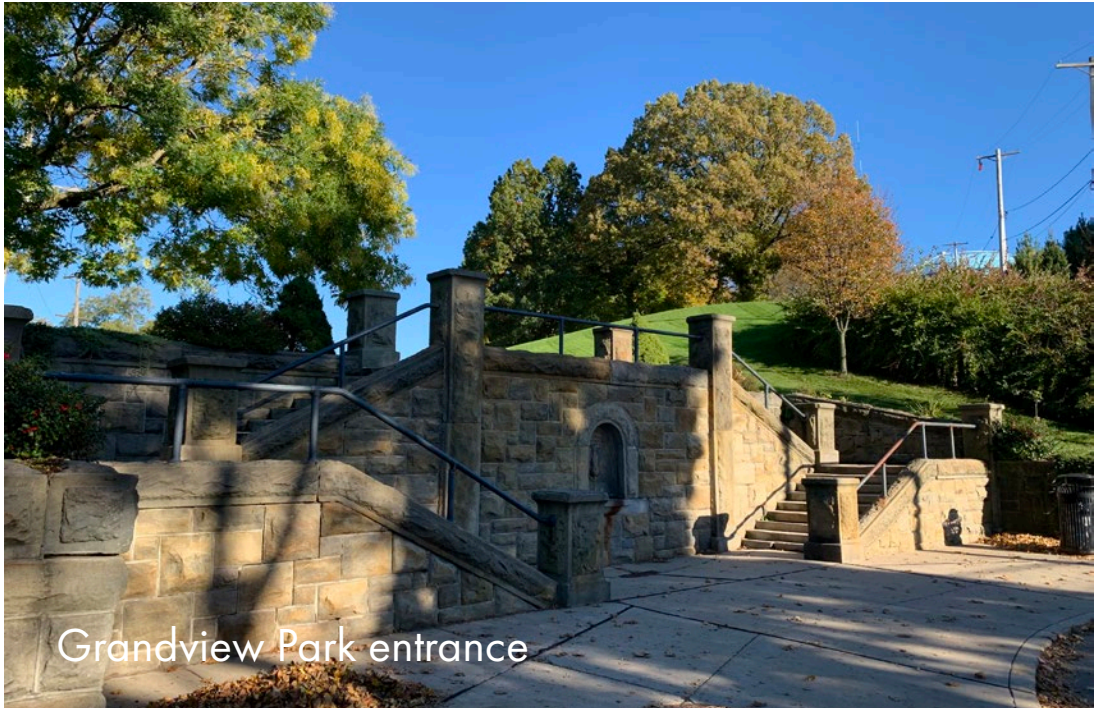


Virginia Avenue Entrance

Existing entrances have fallen into disrepair, prioritize vehicles, and do not create a welcoming park experience.

MASTER PLAN STRATEGIES | OLYMPIA PARK

Define park entrances and simplify site geometries and materials



Take inspiration from original Emerald View Park material palette of stone, belgian block, brick, and asphalt.

MASTER PLAN STRATEGIES | OLYMPIA PARK

Define park entrances and simplify site geometries and materials



Introduce contemporary uses of traditional materials including belgian blocks, asphalt, stone, and brick.

MASTER PLAN STRATEGIES | OLYMPIA PARK

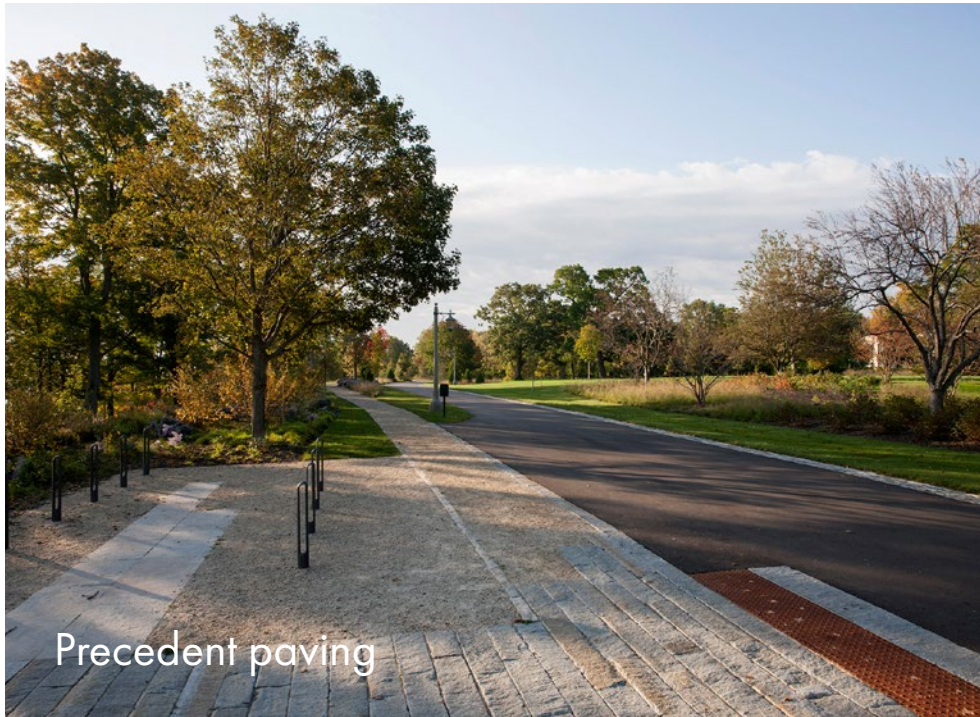
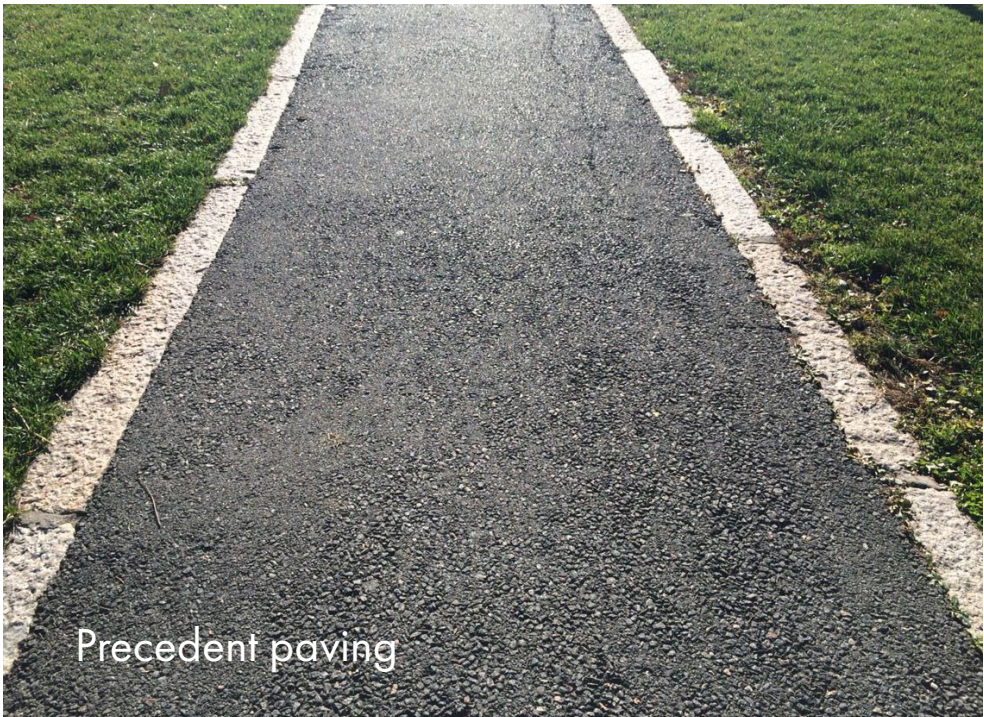
Define park entrances and simplify site geometries and materials



Existing site furniture, paving, walls, and stairs have fallen into disrepair. Renovate, restore, or replace site materials.

MASTER PLAN STRATEGIES | GRANDVIEW PARK

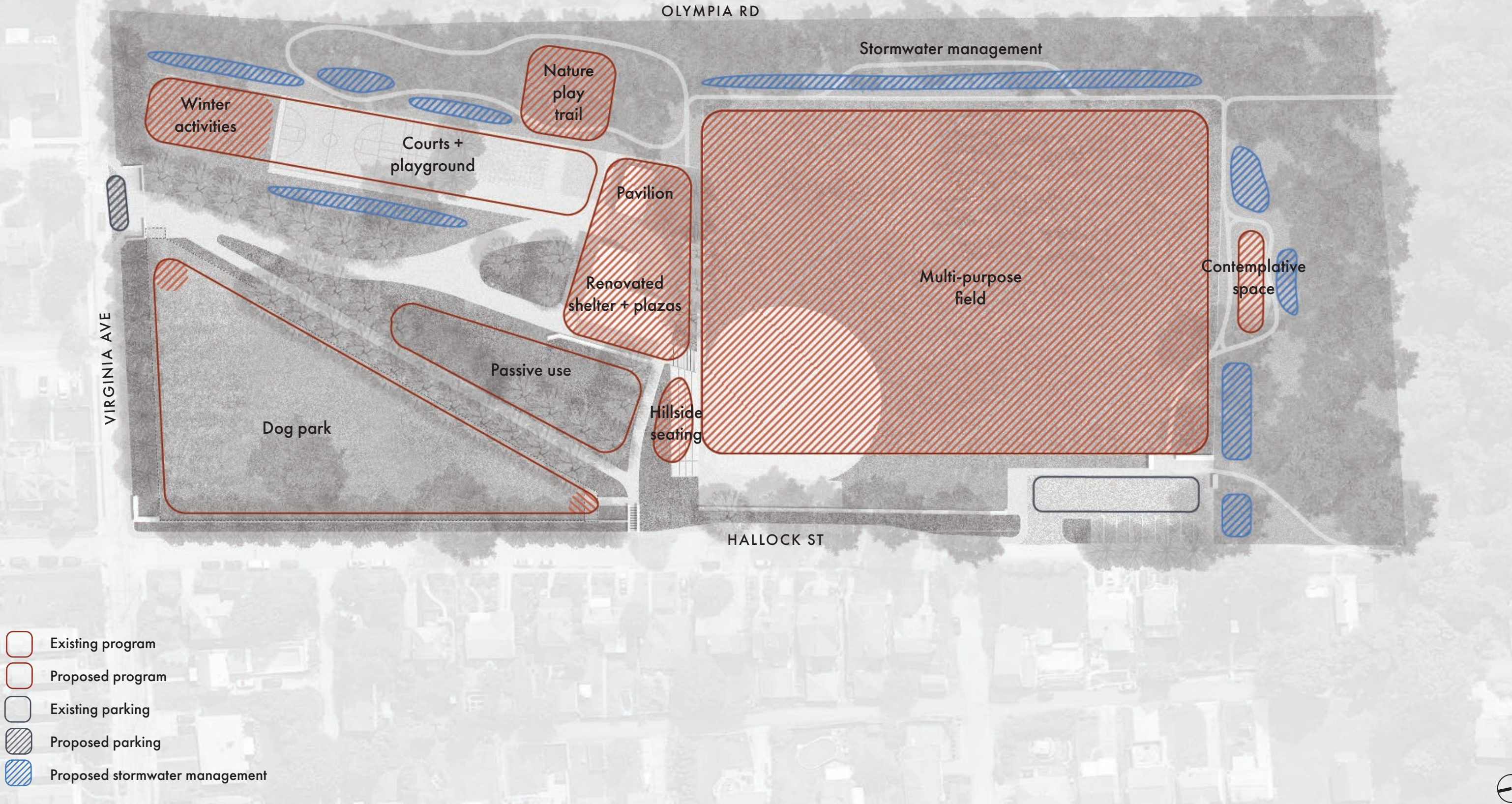
Simplify site geometries and materials



Introduce contemporary uses of traditional materials including belgian blocks, asphalt, stone, and brick.

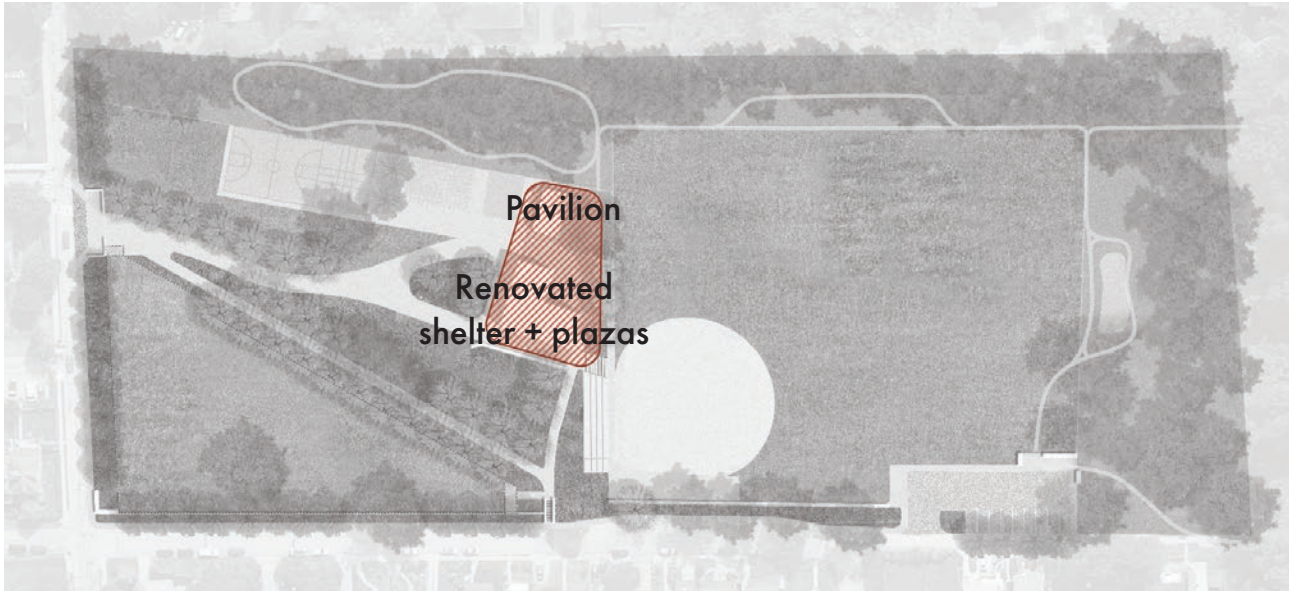
MASTER PLAN STRATEGIES | OLYMPIA PARK

Renovate existing park amenities, introduce new park amenities, and identify available flat land for large gathering spaces



MASTER PLAN STRATEGIES | OLYMPIA PARK

Renovate existing park amenities and introduce new park amenities



Olympia Park pavilion



Olympia Park shelter lower plaza



Olympia Park shelter upper plaza

Renovate Olympia Park shelter, simplify vehicular and pedestrian circulation, introduce upper and lower plazas, and replace picnic shelter.

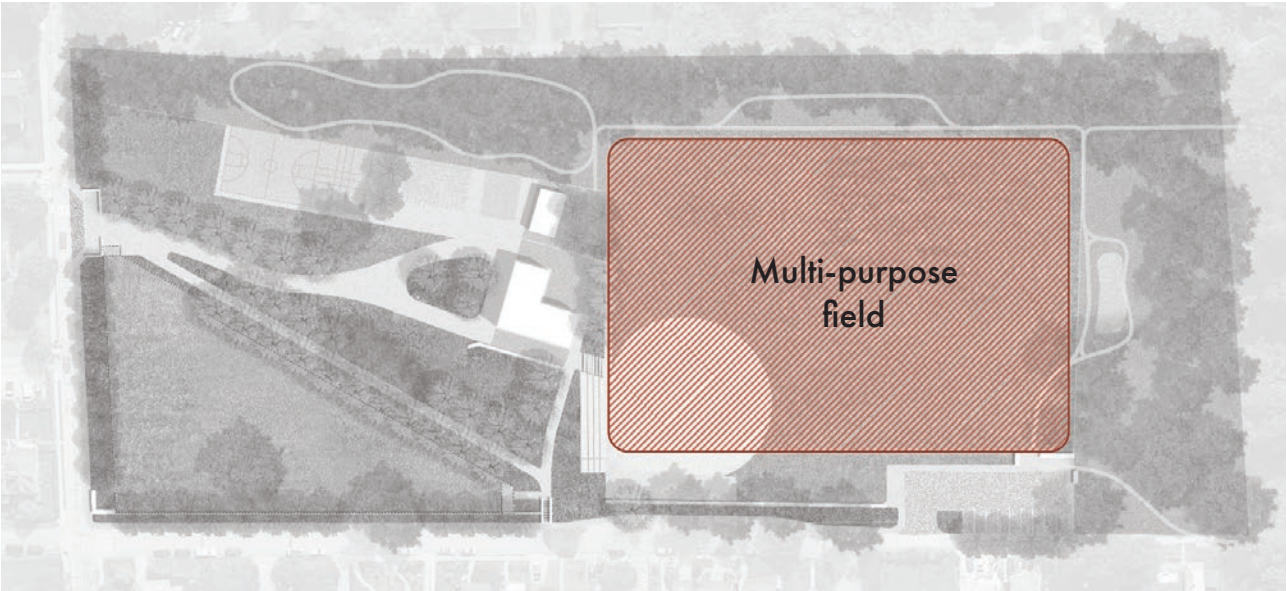


MASTER PLAN STRATEGIES | OLYMPIA PARK

Renovate existing park amenities and introduce new park amenities



MASTER PLAN STRATEGIES | OLYMPIA PARK
Renovate existing park amenities, introduce new park amenities,
and identify available flat land for large gathering spaces



Multi-purpose lawn precedent



Multi-purpose lawn precedent

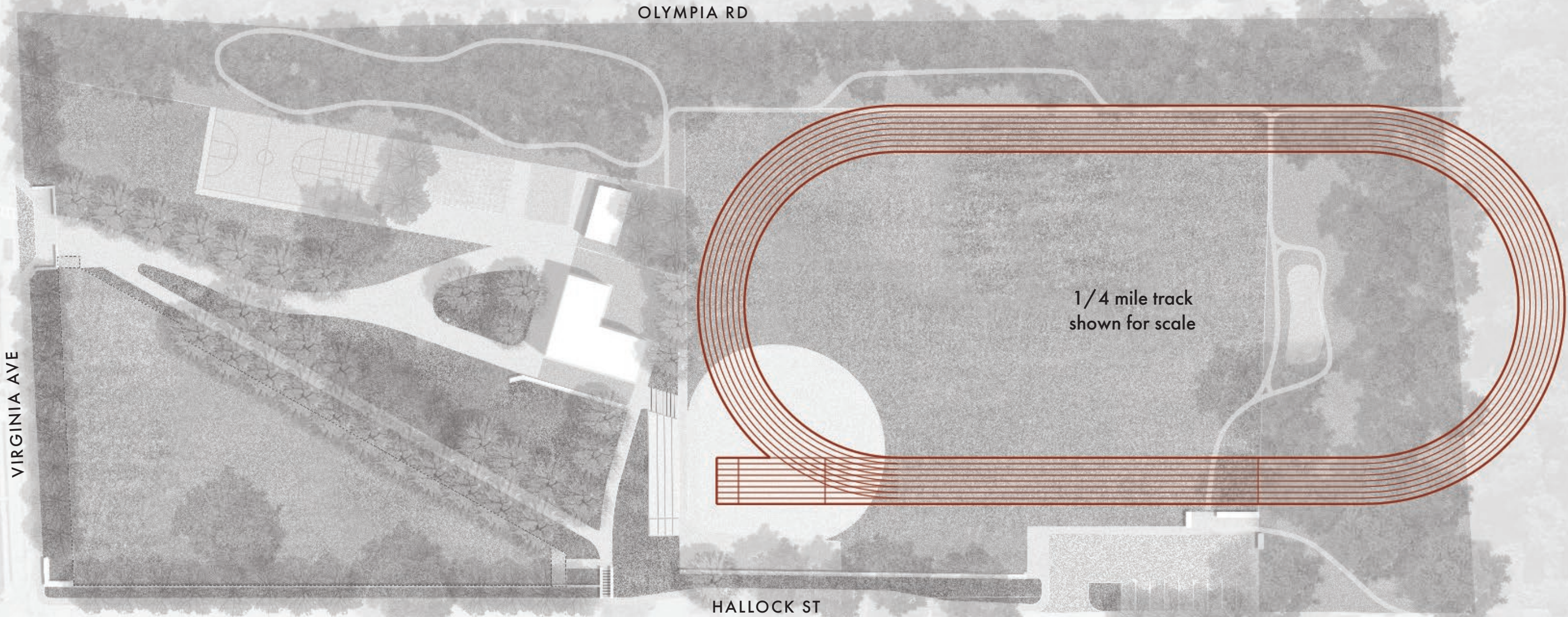


Olympia Park baseball field

Renovate baseball field to include multi-purpose field or running track

MASTER PLAN STRATEGIES | OLYMPIA PARK

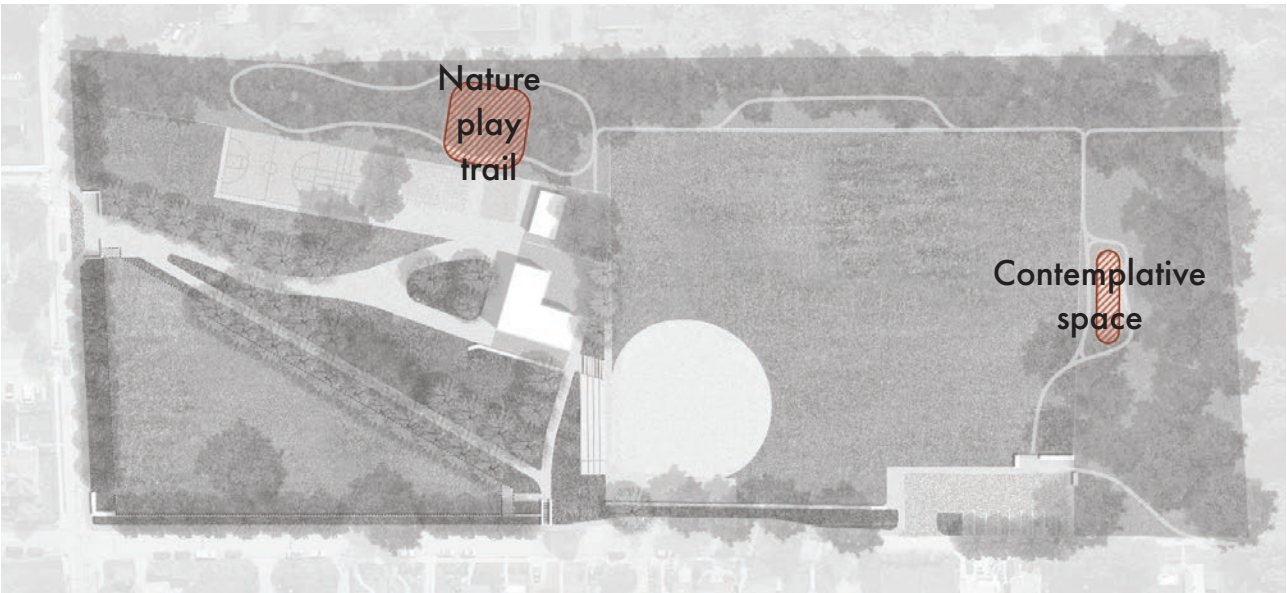
Renovate existing park amenities, introduce new park amenities, and identify available flat land for large gathering spaces



Renovate baseball field to include multi-purpose field or running track



MASTER PLAN STRATEGIES | OLYMPIA PARK
Renovate existing park amenities, introduce new park amenities, design contemplative spaces



Nature play trail precedent



Nature play trail precedent



Contemplative space precedent

Maximize use of Olympia Road hillside as a nature play trail. Introduce new trail around field with contemplative spaces.

MT. WASHINGTON PARK

MASTER PLAN STRATEGIES | MT. WASHINGTON PARK
What we heard + observed



Entrance to trail is unclear

Desire for stronger park gateway and trail entrance

Difficult circulation

Desire for better streetscape

Historic WPA stone walls and steps

Materials and site furniture deteriorating

Court surface recently refinished

Shelter needs to be renovated with restrooms

Playgrounds recently renovated

Desire for ADA trail

Field frequently used

Entrance to trail is unclear

Field underutilized, currently floods, one of few spaces in EVP with flat land

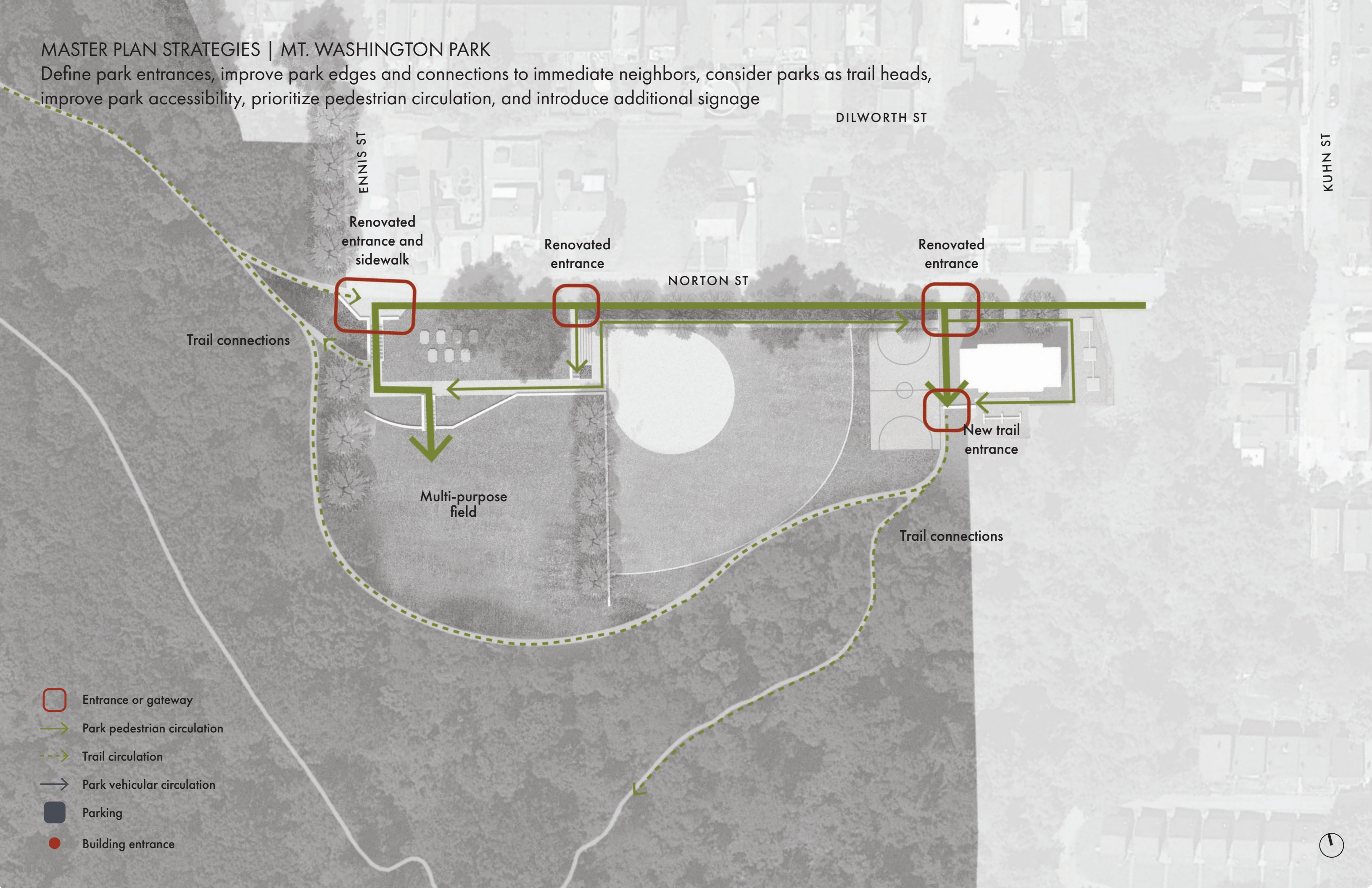


MASTER PLAN STRATEGIES | MT. WASHINGTON PARK
Renovate existing park amenities and introduce new park amenities



MASTER PLAN STRATEGIES | MT. WASHINGTON PARK

Define park entrances, improve park edges and connections to immediate neighbors, consider parks as trail heads, improve park accessibility, prioritize pedestrian circulation, and introduce additional signage



- Entrance or gateway
- Park pedestrian circulation
- Trail circulation
- Park vehicular circulation
- Parking
- Building entrance



MASTER PLAN STRATEGIES | MT. WASHINGTON PARK

Define park entrances, improve park edges and connections to immediate neighbors, consider parks as trail heads, improve park accessibility, prioritize pedestrian circulation, and introduce additional signage



Norton + Ennis Street Entrance



Norton Street Entrance

Existing entrances have fallen into disrepair and do not create a welcoming park experience.

MASTER PLAN STRATEGIES | MT. WASHINGTON PARK

Define park entrances, improve park edges and connections to immediate neighbors, consider parks as trail heads, improve park accessibility, prioritize pedestrian circulation, and introduce additional signage



Renovate existing stone walls and stairs. Take inspiration from original Emerald View Park material palette of stone, belgian block, brick, and asphalt.

MASTER PLAN STRATEGIES | MT. WASHINGTON PARK

Define park entrances and simplify site geometries and materials



Introduce contemporary uses of traditional materials including belgian blocks, asphalt, stone, and brick.

MASTER PLAN STRATEGIES | MT. WASHINGTON PARK
Simplify site geometries and materials



Mt. Washington Park paving



Mt. Washington Park paving



Mt. Washington furniture + paving

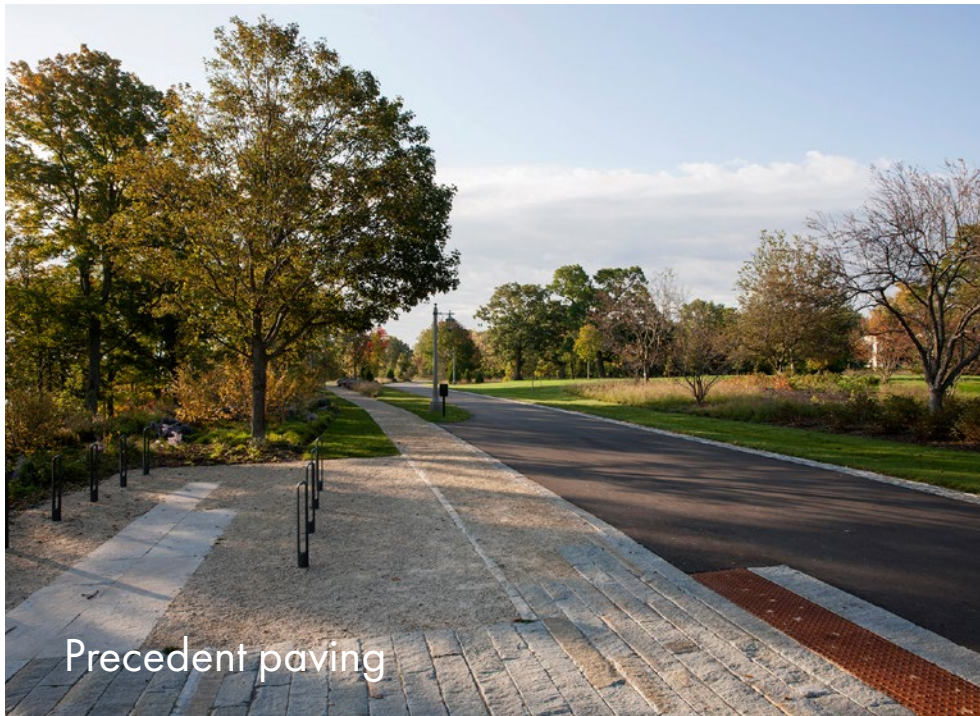
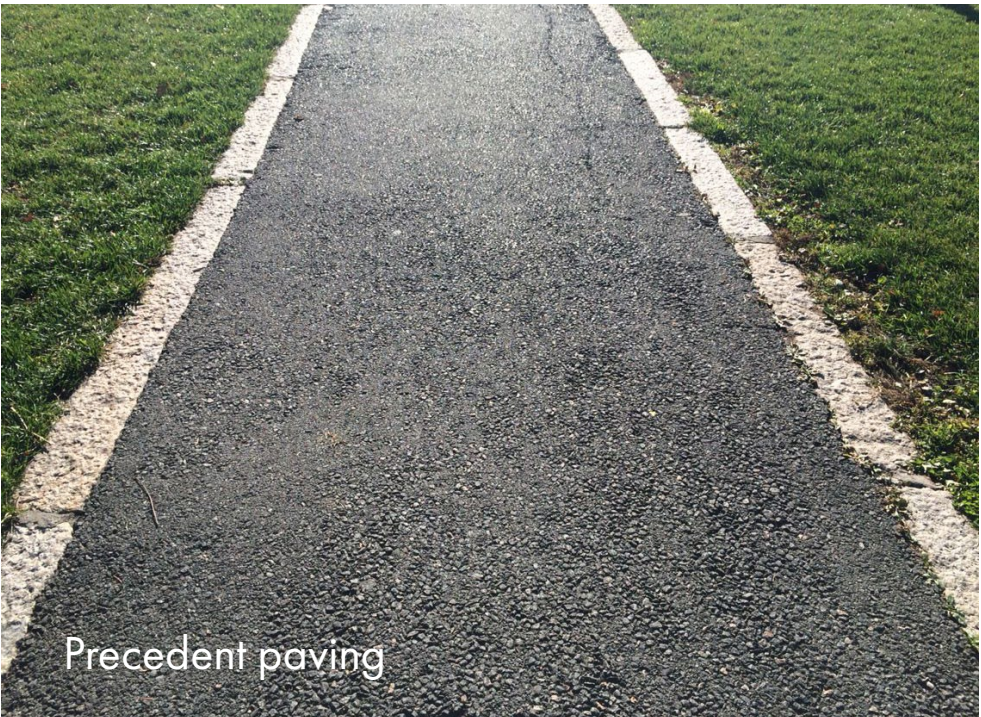


Mt. Washington furniture + paving

Existing site furniture, paving, walls, and stairs have fallen into disrepair. Renovate, restore, or replace site materials.

MASTER PLAN STRATEGIES | MT. WASHINGTON PARK

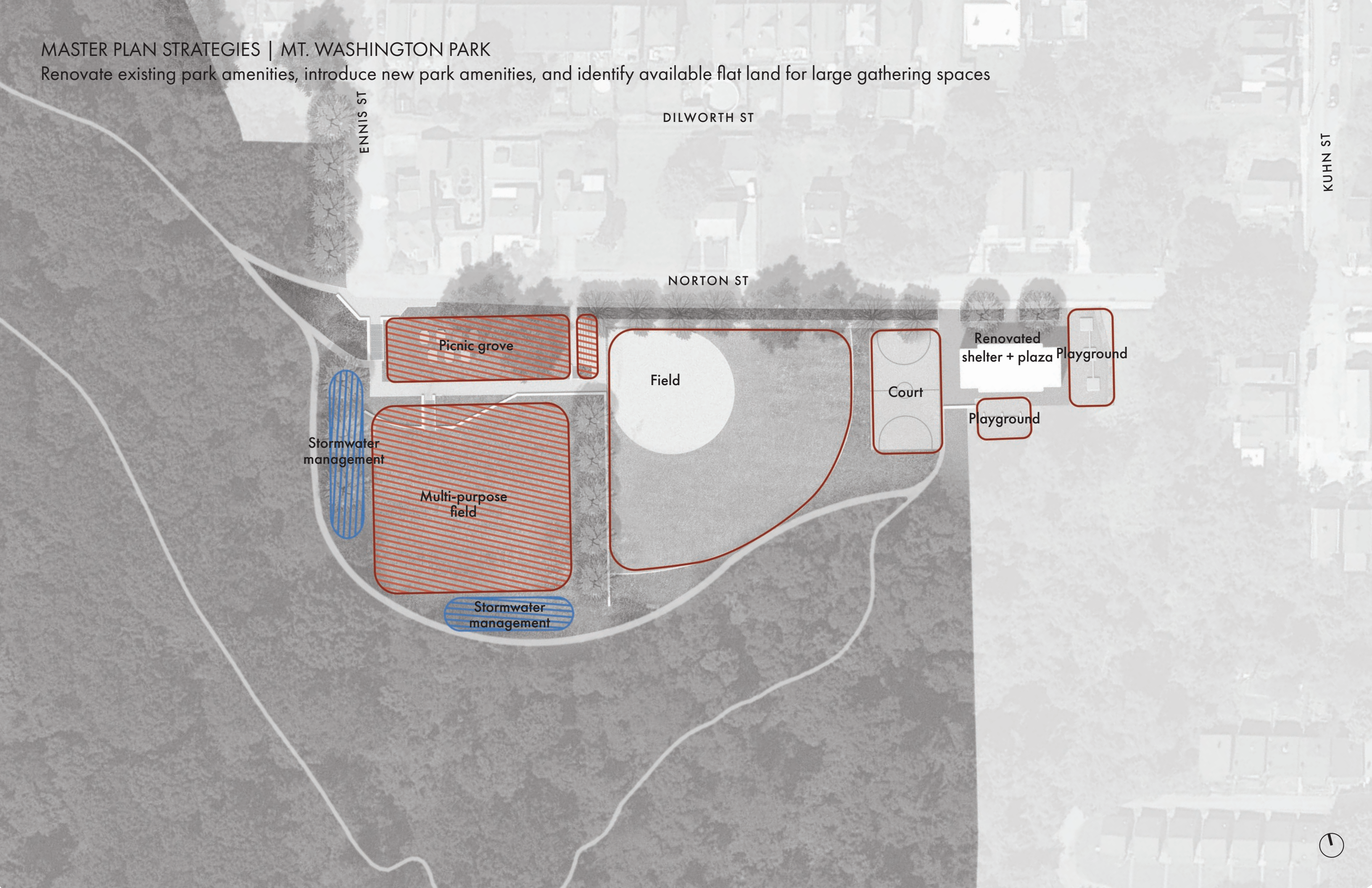
Simplify site geometries and materials



Introduce contemporary uses of traditional materials including belgian blocks, asphalt, stone, and brick.

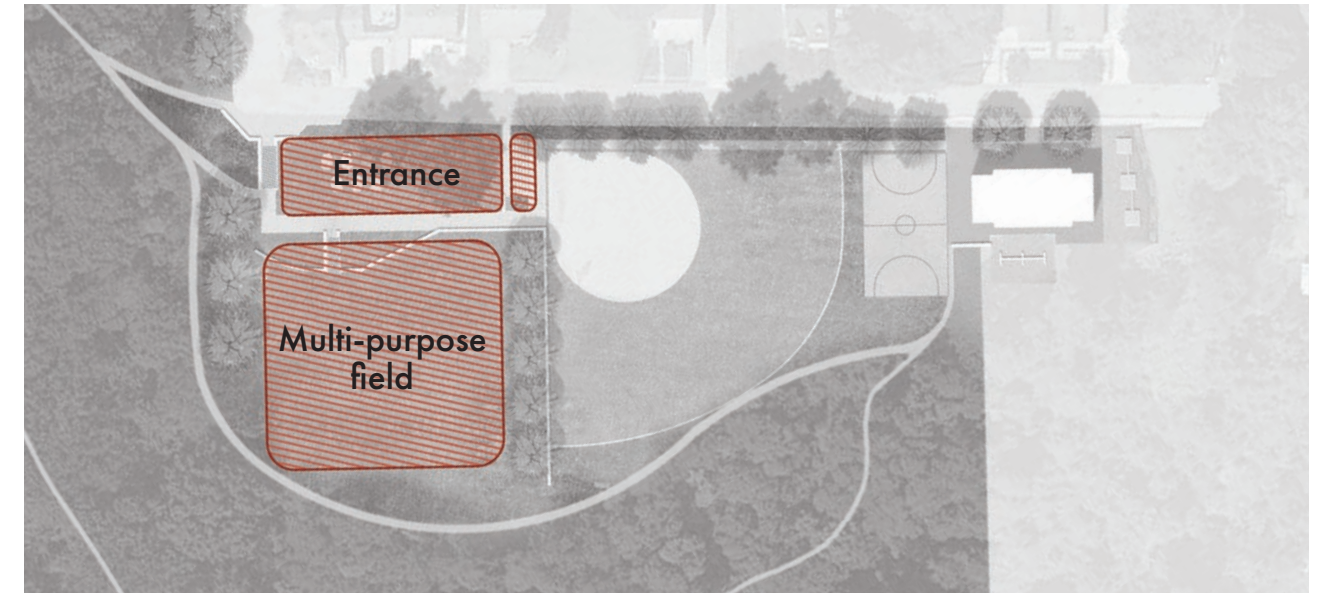
MASTER PLAN STRATEGIES | MT. WASHINGTON PARK

Renovate existing park amenities, introduce new park amenities, and identify available flat land for large gathering spaces



MASTER PLAN STRATEGIES | MT. WASHINGTON PARK

Renovate existing park amenities, introduce new park amenities, and identify available flat land for large gathering spaces



Mt. Washington Park lower field



Mt. Washington Park path



Mt. Washington Park stairs

Address lower field stormwater issues with grading, incorporate hillside spectator viewing areas, prioritize historic stone walls into circulation routes.

MASTER PLAN STRATEGIES | MT. WASHINGTON PARK

Renovate existing park amenities, introduce new park amenities, and identify available flat land for large gathering spaces

