

Deer Pit Playground

Community Meeting #2



- I. Introductions
- II. Community Engagement Results
- III. Proposed Improvements
- IV. Next Steps



Welcome & Introductions

- Review Agenda
- The City of Pittsburgh 2021 Capital Budget Funds designate \$200,000 for Play Area Improvements at Deer Pit Playground
 - Scope of Work → Playground, Safety Surface, Minor Site Improvements
- Who is involved?
 - Council District 1
 - Department of Public Works
 - Community Partners

I. Introductions

II. Community Engagement Results

III. Proposed Improvements

IV. Q&A and Next Steps



Work-to-Date

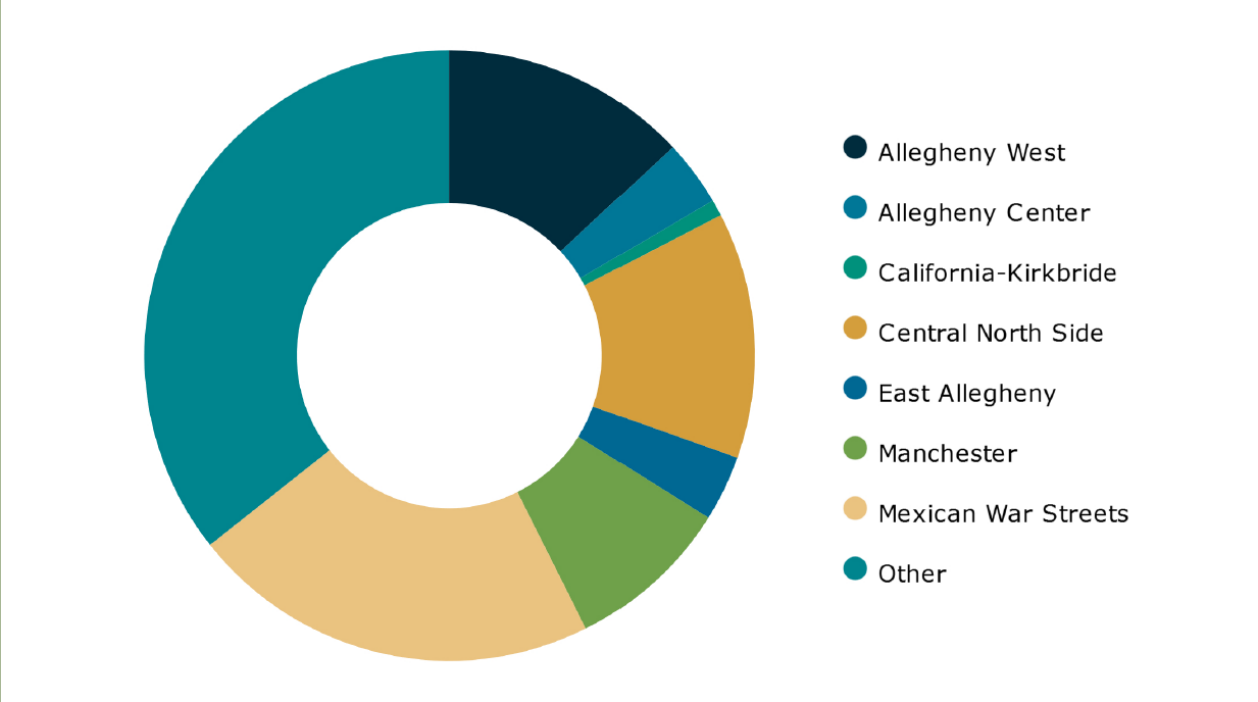
- Initial Kick-off Meeting: November 19, 2020
- Topographic Survey: December 2020
- Community Engagement Survey: December – February, 2021
 - 115 Participants!

- I. Introductions
- II. Community Engagement Results
- III. Proposed Improvements
- IV. Next Steps



Community Engagement Results

What neighborhood do you live in?

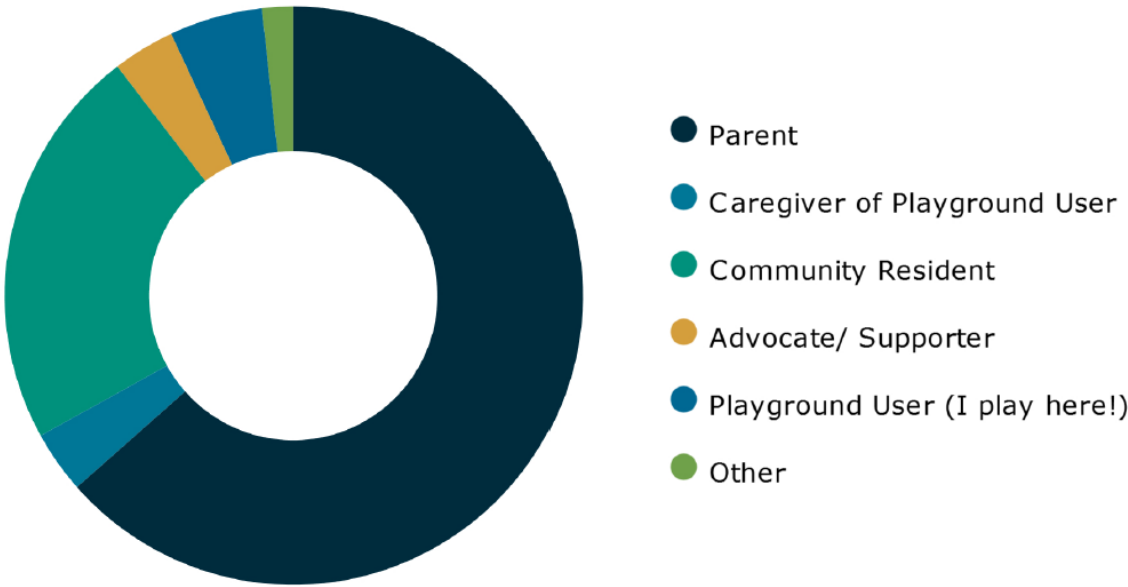


- I. Introductions
- II. **Community Engagement Results**
- III. Proposed Improvements
- IV. Next Steps



Community Engagement Results

What is your relationship to the playground?

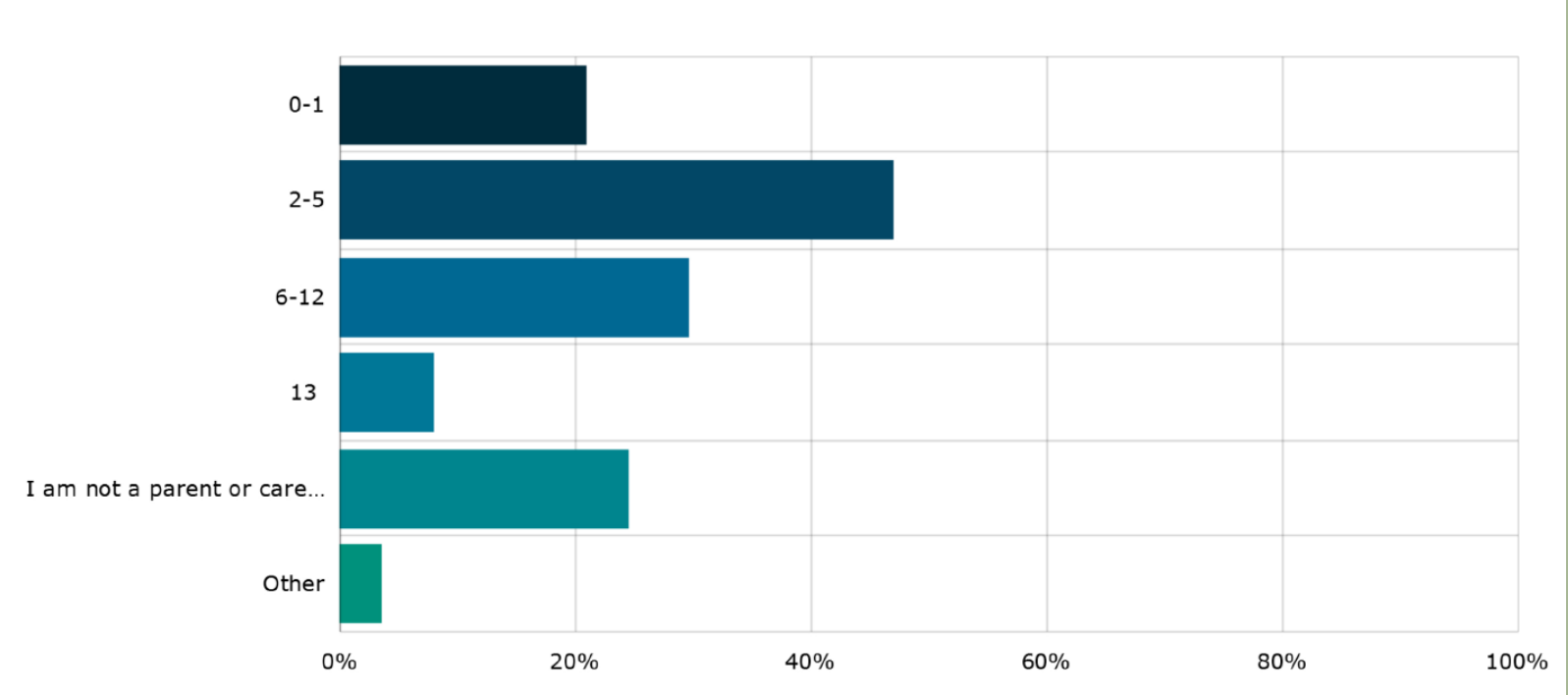


- I. Introductions
- II. Community Engagement Results**
- III. Proposed Improvements
- IV. Next Steps



Community Engagement Results

If you are a parent or caregiver, what are the ages of the children in your care?

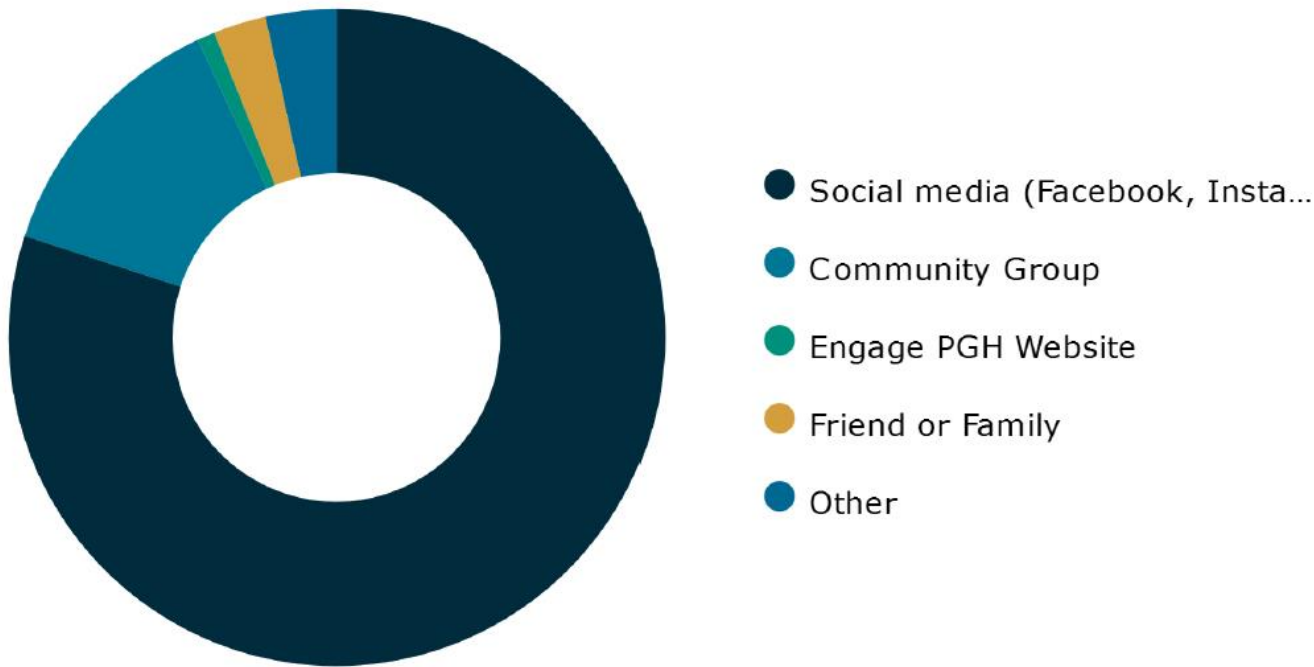


- I. Introductions
- II. Community Engagement Results**
- III. Proposed Improvements
- IV. Next Steps



Community Engagement Results

How did you hear about the survey?

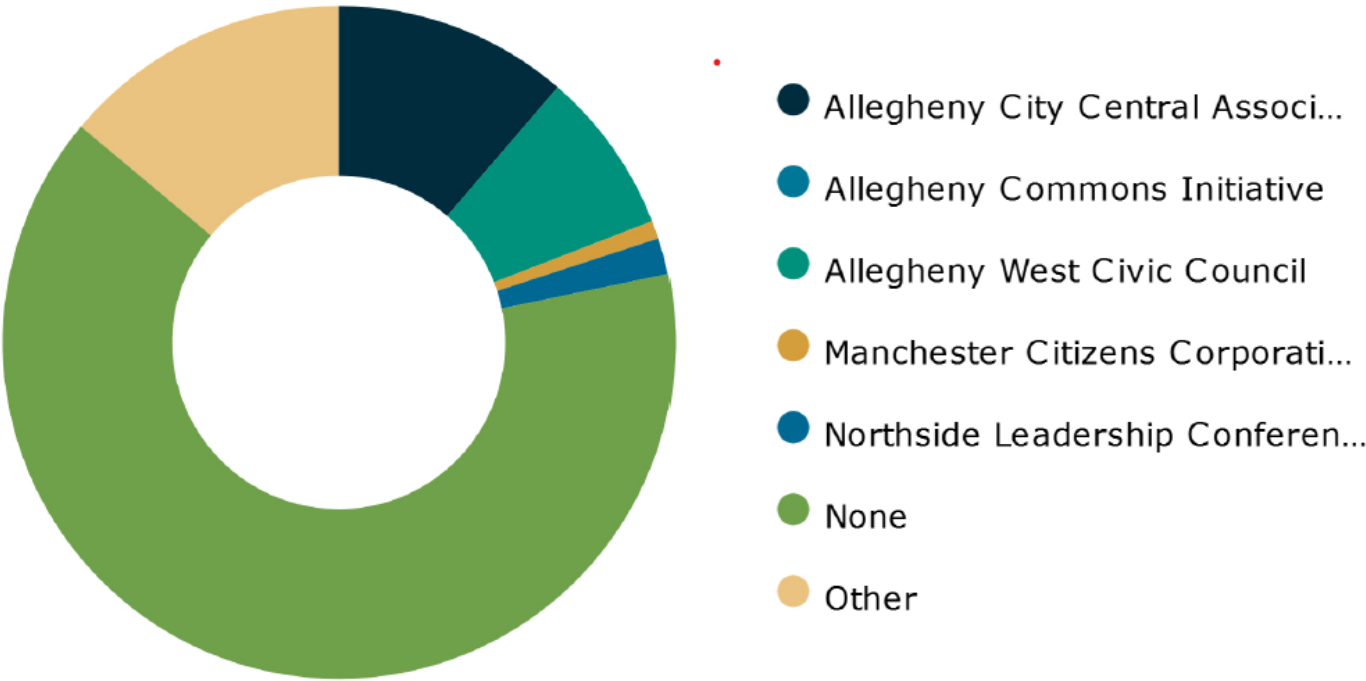


- I. Introductions
- II. Community Engagement Results**
- III. Proposed Improvements
- IV. Next Steps



Community Engagement Results

Are you affiliated with any of the following groups?

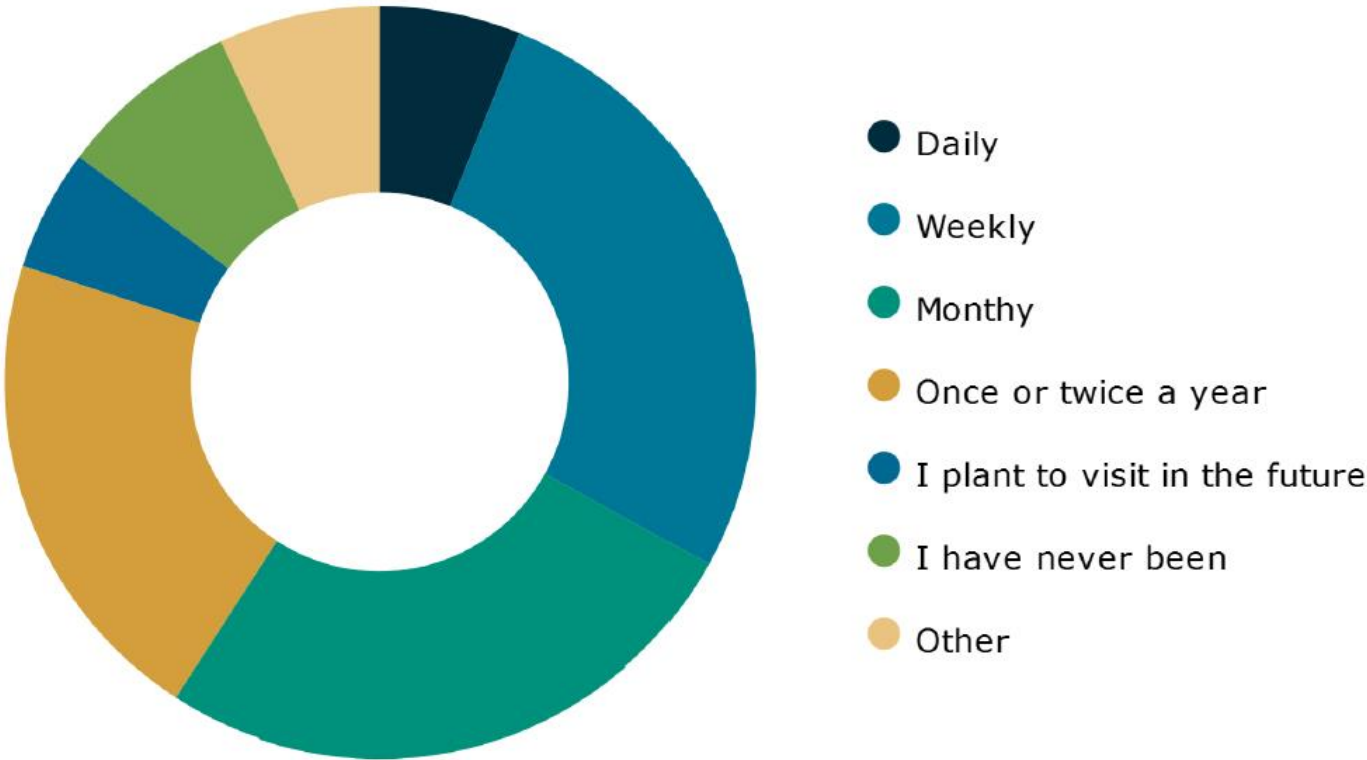


- I. Introductions
- II. Community Engagement Results**
- III. Proposed Improvements
- IV. Next Steps



Community Engagement Results

How often did you visit the playground prior to COVID-19?

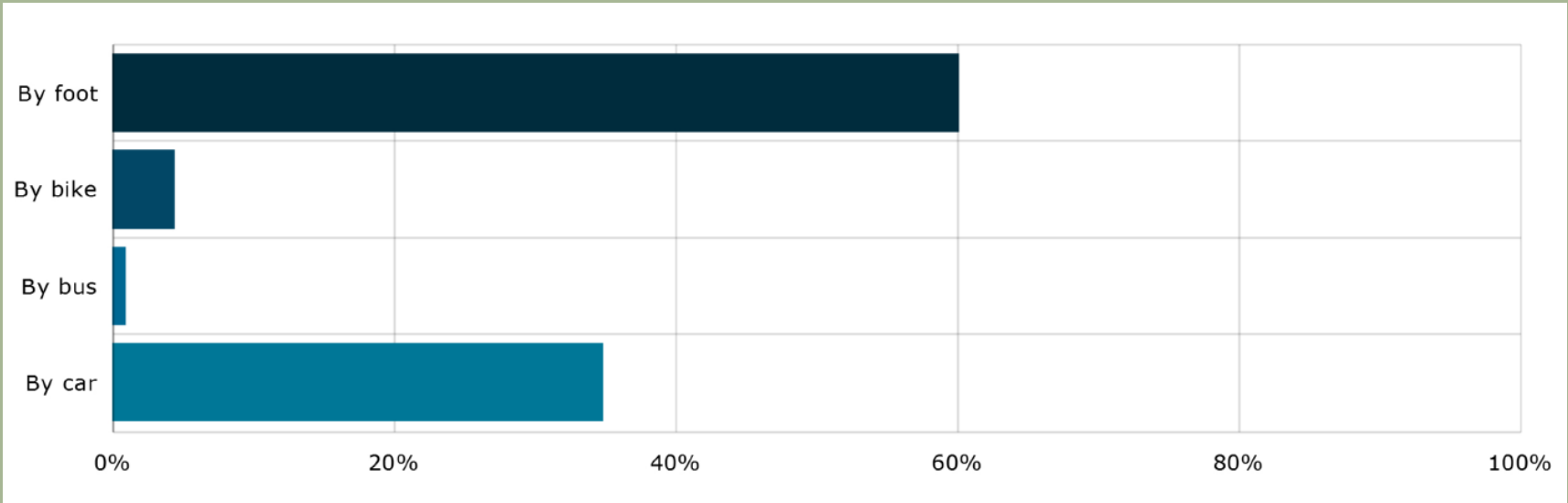


- I. Introductions
- II. Community Engagement Results**
- III. Proposed Improvements
- IV. Next Steps



Community Engagement Results

How do you usually get to the playground?



- I. Introductions
- II. Community Engagement Results**
- III. Proposed Improvements
- IV. Next Steps



Community Engagement Results

What parts of the previous playground would you like to see in the new one?

Water Fountain The Deer
Nature Sides ADA Swings
Update Climbing **Swings** The Bus Inconspicuous
Natural Colors Benches Slides
Different Ages & Abilities Bridge Accessible
Open Space

- I. Introductions
- II. **Community Engagement Results**
- III. Proposed Improvements
- IV. Next Steps



Community Engagement Results

What parts of the previous playground would you like to see changed in the new one?

Natural Materials More Options
Updated Picnic Tables
Bike Racks Not Wood
Imaginative Climbing Accessible
Zip Line ADA Friendly
Bigger
More Swings
Seating for Parents
All Ages & Abilities Obstacle Course
Modernize

- I. Introductions
- II. Community Engagement Results
- III. Proposed Improvements
- IV. Next Steps



Community Engagement Results

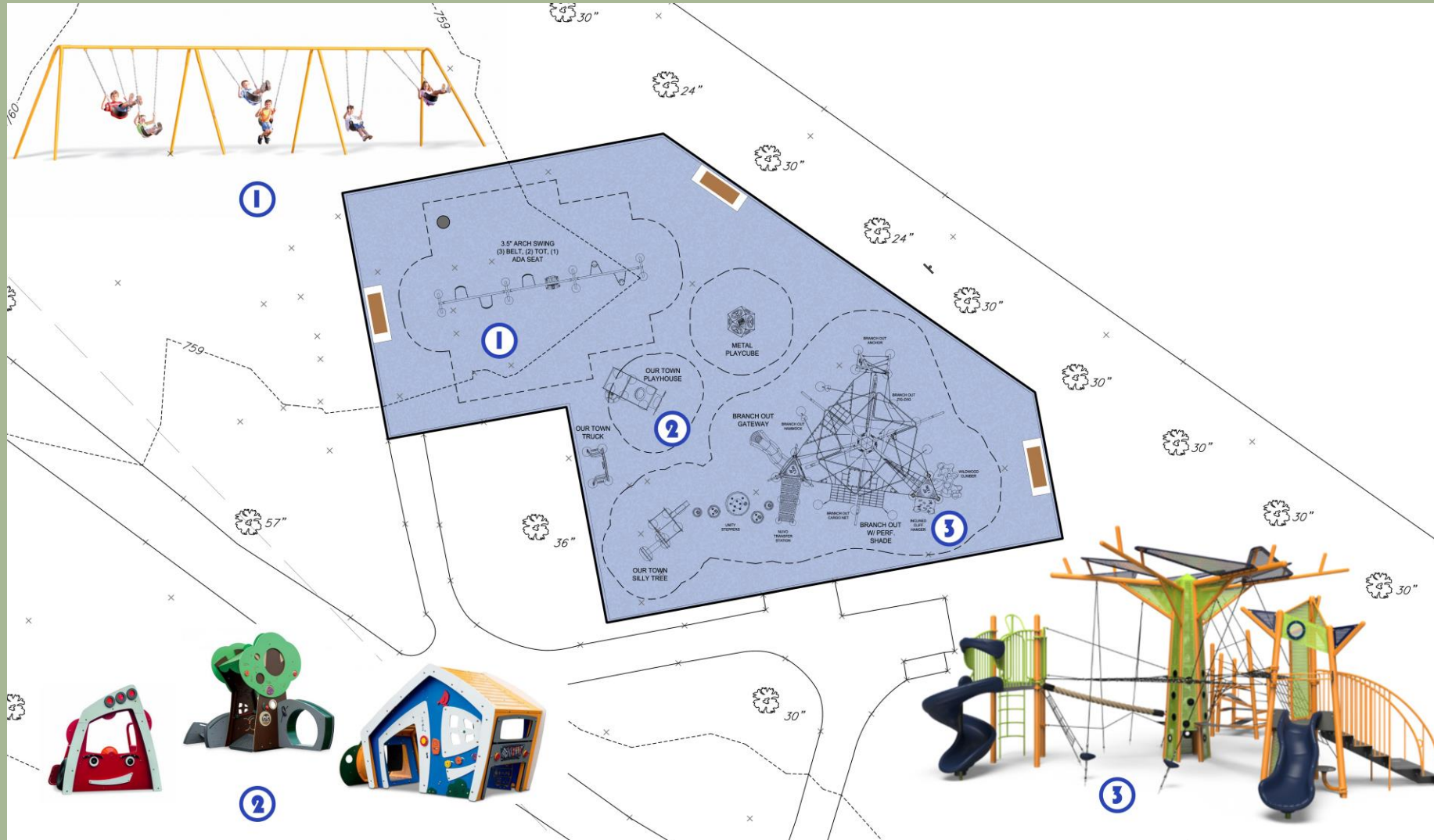
What style of equipment do you think is most appropriate for the playground?



- I. Introductions
- II. **Community Engagement Results**
- III. Proposed Improvements
- IV. Next Steps



Proposed Playground Plan



- I. Introductions
- II. Community Engagement Results
- III. Proposed Improvements
- IV. Next Steps



Playground Rendering



- I. Introductions
- II. Community Engagement Results
- III. Proposed Improvements
- IV. Next Steps



Site Amenities & Ongoing Improvements



City of Pittsburgh Park Bench



Standard Signage



Walkway Improvements



Water Fountain



Public Art



Picnic Tables

- I. Introductions
- II. Community Engagement Results
- III. Proposed Improvements
- IV. Next Steps**



Q&A and Next Steps

- Develop Construction Documents
- Historic Review Commission
- Art Commission
- Contact: andrea.ketzel@pittsburghpa.gov
- Follow Updates: <https://engage.pittsburghpa.gov/deer>

- I. Introductions
- II. Existing Conditions
- III. Improvements
- IV. Character Images
- V. Next Steps**

