

EMERALD VIEW PARK REGIONAL PARK MASTER PLAN

Public Workshop #3
May 20, 2021



**Pittsburgh
Parks
Conservancy**

**MERRITT
CHASE** /

WELCOME!
QUICK ZOOM TUTORIAL

Zoom Meeting

Talking:

Meeting Topic:

Merritt Chase's Personal Meeting Room

Host:

Merritt Chase

Invite Link:

https://us02web.zoom.us/j/9548814204

Copy Link

Participant ID:

424704

Join Audio

Computer Audio Connected

Share Screen

Invite Others

Please mute your audio,
unless you are talking.

If you'd prefer, use the
chat to type questions.

Unmute

Start Video

Security

Participants 1

Chat

Share Screen

Record

End

Public Workshop Ground Rules

1. Stay present and engaged. Turn off or mute your devices.
2. The group values your participation, so do what you need to do so you can devote your full attention.
3. Listen with an open mind. You can respect another's point of view without agreeing with them. Let people finish their thoughts.
4. Be honest. Say what is on your mind in the meeting, not afterwards.
5. Share the airtime; avoid long-winded stories, detail, and repetition.
6. Stay until the meeting ends.
7. Everyone is responsible for the ground rules. Notice when we've strayed, and speak up.

Public Workshop Outcomes

1. Understanding of draft master plan organization and content
2. Understanding of next steps and how and when to provide feedback

Public Workshop Agenda

1. Review the master plan process and schedule (10 mins)
2. Present overview of draft master plan organization and content (30 mins)
3. Q+A (20 mins)

An aerial photograph of Pittsburgh, Pennsylvania, featuring a cable car (Duquesne Incline) ascending a forested hill. The city skyline, including the PPG Place skyscraper, is visible in the background. The word "INTRODUCTIONS" is overlaid in white capital letters in the center of the image.

INTRODUCTIONS

Project Team

- City of Pittsburgh Department of City Planning
- Pittsburgh Parks Conservancy

Design Team

- Merritt Chase (Lead)
Landscape Architecture
- Mon-Win Consulting
Public Engagement
- Spackman Mossop Michaels
Park + Stormwater Planning
- Civil & Environmental Consultants
Ecology + Engineering
- Bohlin Cywinski Jackson
Architecture

Advisory Committee

- Allentown CDC
- City Council Office
- Council District 2, Theresa Kail-Smith
- Council District 4, Anthony Coghill
- Department of Mobility and Infrastructure
- Department of Public Works
- Hilltop Alliance
- Mayor’s Office
- Mount Washington CDC
- Mount Washington Community Garden
- Neighbors on the Mount
- Office of Management & Budget
- Pittsburgh Water and Sewer Authority
- Public Safety (Park Rangers)
- Ream Recreation Center
- Washington Heights Athletic Association

An aerial photograph showing a dense residential neighborhood with many houses and trees. In the foreground, there is a large green field with two baseball diamonds. The background shows a city skyline with several tall buildings, including one with 'UPMC' on top. The text 'EMERALD VIEW PARK REGIONAL PARK MASTER PLAN' is overlaid in white capital letters in the center of the image.

EMERALD VIEW PARK REGIONAL PARK MASTER PLAN

Why do we need a master plan?

- Communicate the community's vision for a cohesive regional park
- Consolidate recommendations from past planning efforts
- Guide Emerald View Park's future physical development with conceptual design recommendations, a phasing plan, and cost estimates
- Ensure that individual park improvements and day-to-day decisions fit within a larger vision
- Ensure that fundraising and implementation are properly sequenced and contribute to long-term goals
- Inspire local stewardship and build momentum for future project implementation

PITTSBURGH'S REGIONAL PARK CONTEXT

Riverview
Park

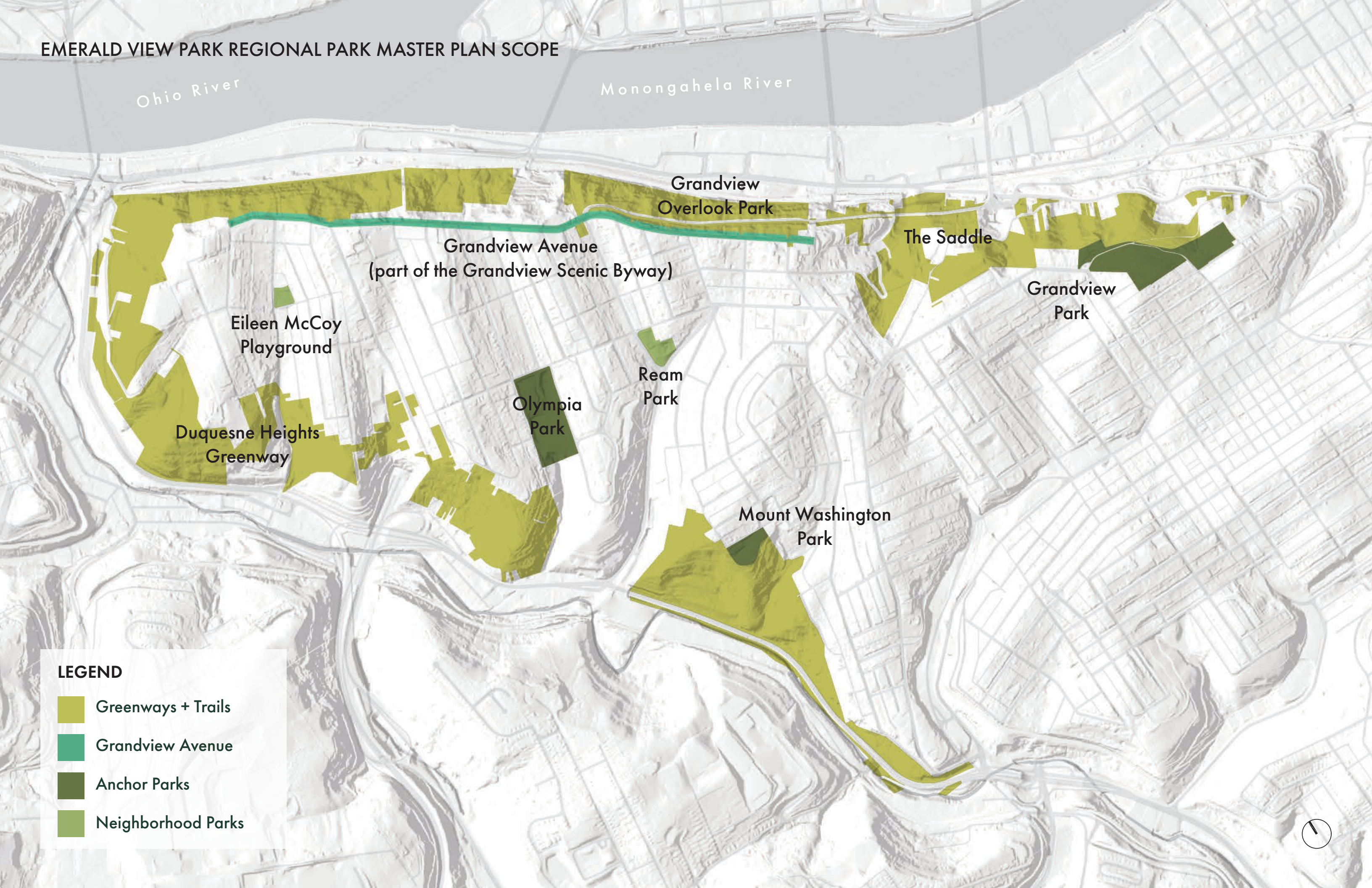
Highland
Park

Frick
Park

Schenley
Park

Emerald
View
Park

EMERALD VIEW PARK REGIONAL PARK MASTER PLAN SCOPE



Ohio River

Monongahela River

Grandview
Overlook Park

Grandview Avenue
(part of the Grandview Scenic Byway)

The Saddle

Grandview
Park

Eileen McCoy
Playground

Duquesne Heights
Greenway

Olympia
Park

Ream
Park

Mount Washington
Park

LEGEND

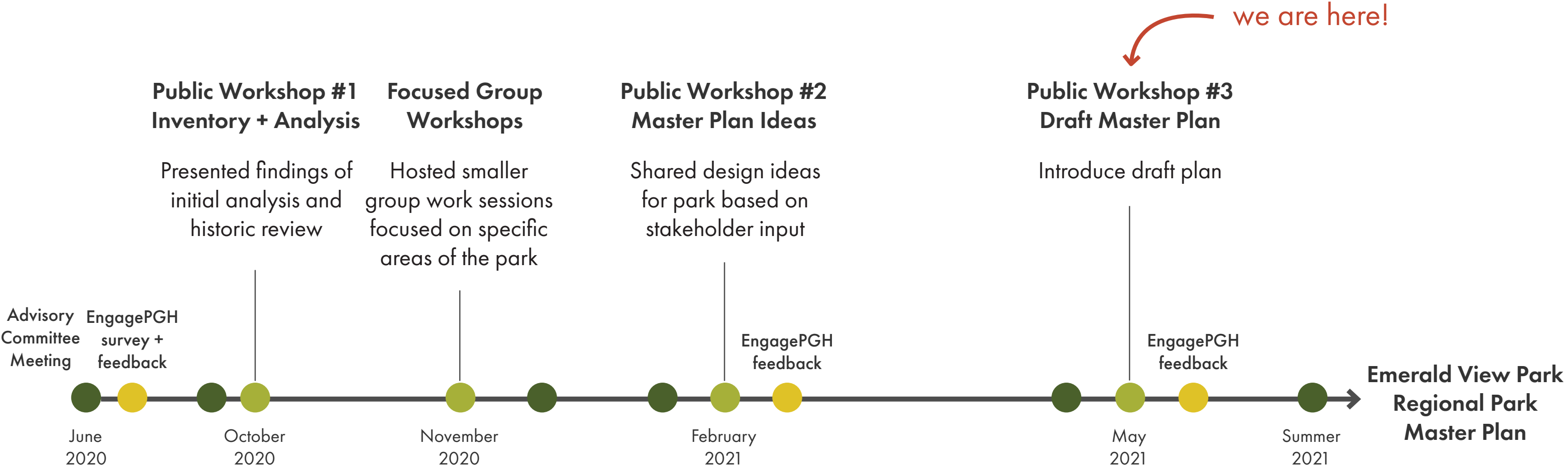
- Greenways + Trails
- Grandview Avenue
- Anchor Parks
- Neighborhood Parks



An aerial photograph of a cityscape. On the left, a tall, modern building with a stepped design stands out. Below it, a dense forest of trees with yellow and green foliage covers a hill. A small red building is visible on the hill. To the right, a wide river flows, with a large bridge spanning it. The city extends into the distance under a blue sky with scattered clouds.

SCHEDULE

PROJECT SCHEDULE



What happens next?

- Draft master plan uploaded to EngagePGH
- Public comments provided by June 17th (1 month from today)
- Final master plan approved by PA Dept. of Conservation & Natural Resources, published this summer, presented at Art Commission (courtesy review)
- Funding sought for implementation of improvements according to phasing plan, led by City of Pittsburgh and project partners
- Projects implemented
 - Design consultants hired, as needed
 - Design refined to greater level of detail
 - Construction documents produced
 - Projects bid out to contractors, as needed
 - Construction occurs
 - Ongoing maintenance, programming



DRAFT MASTER PLAN



NEXT STEPS

Next Steps

1. Visit EngagePGH
2. Provide feedback by June 17th
on draft master plan



THANK YOU!