

MELLON PARK

ACTION PLAN

COMMUNITY PRESENTATION - LISTENING SESSIONS | May 12, 2021

Meeting Agenda

1. Project Team Introductions

2. What is an Action Plan?

3. Review of Public Engagement Approach

4. Why Mellon Park?

5. Breakout Room Discussions

6. Report Out/ Next Steps

Project Team

PITTSBURGH PARKS CONSERVANCY:

Brandon Riley

Project Lead



Gavin White

Project Planner



PPC PROJECT SUPPORT:

Shawn Fertitta, Director of Visitor Experience

Kathryn Hunninen, Senior Manager of Special Initiatives

Erin Tobin, Comm. Engagement Manager

CITY OF PITTSBURGH:

Andrew Dash - Department of City Planning

Martina Battistone, Kara Smith - Environmental Planners

Christopher Corbett, Ose Akinlotan - Neighborhood Planners

Ross Chapman - Department of Parks and Recreation

Chris Hornstein (Acting) - Department of Public Works

Karina Ricks - Department of Mobility and Infrastructure

Parks Conservancy



Advisory Committee



PROJECT TEAM



City of Pittsburgh



Consultants

ADVISORY COMMITTEE:

City of Pittsburgh:

Departments of City Planning, Public Works, Mobility and Infrastructure; Citiparks, Office of Community Affairs

PWSA, ALCOSAN, Port Authority

Friends of Mellon Park

Community Organizations:

Point Breeze Organization, North Point Breeze Development Corporation, Homewood Concerned Citizens, Operation Better Block, Larimer Consensus Group, East Liberty Development, Inc., Bakery Living apartments, Squirrel Hill Urban Coalition, Shadyside Action Coalition...

Key Stakeholders:

Phipps, Pittsburgh Center for the Arts, Ellis School, Chatham University, Kingsley, PUMP, Herb Society, Negley Run Watershed Task Force...

CONSULTANTS:

Cosmos Technologies, Inc./ EvolveEA
Stormwater Engineer

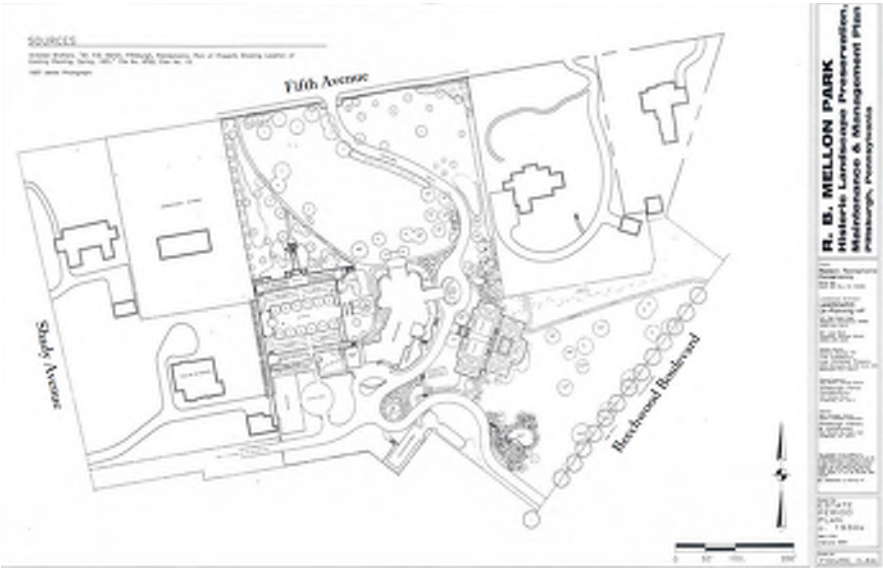
(TBD)
Traffic Engineer

ForeGround Consulting, LLC.
Historic Landscape Consultant

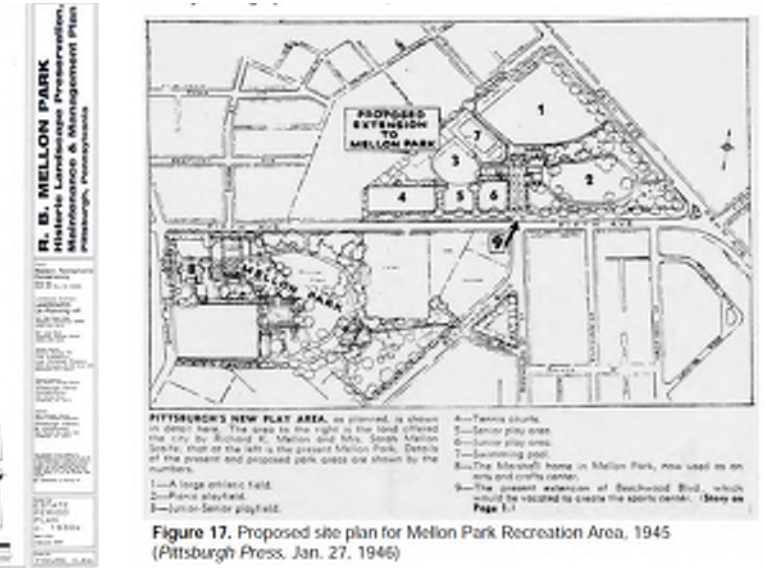
An aerial photograph of a park. In the center, there are two basketball courts with green and blue surfaces. To the left of the courts is a playground with various structures, including slides and climbing equipment. The park is surrounded by trees with green and some autumn-colored foliage. A road with a crosswalk is visible at the top of the image. The text "What is an ACTION PLAN?" is overlaid on the image in a large, bold font.

What is an **ACTION PLAN**?

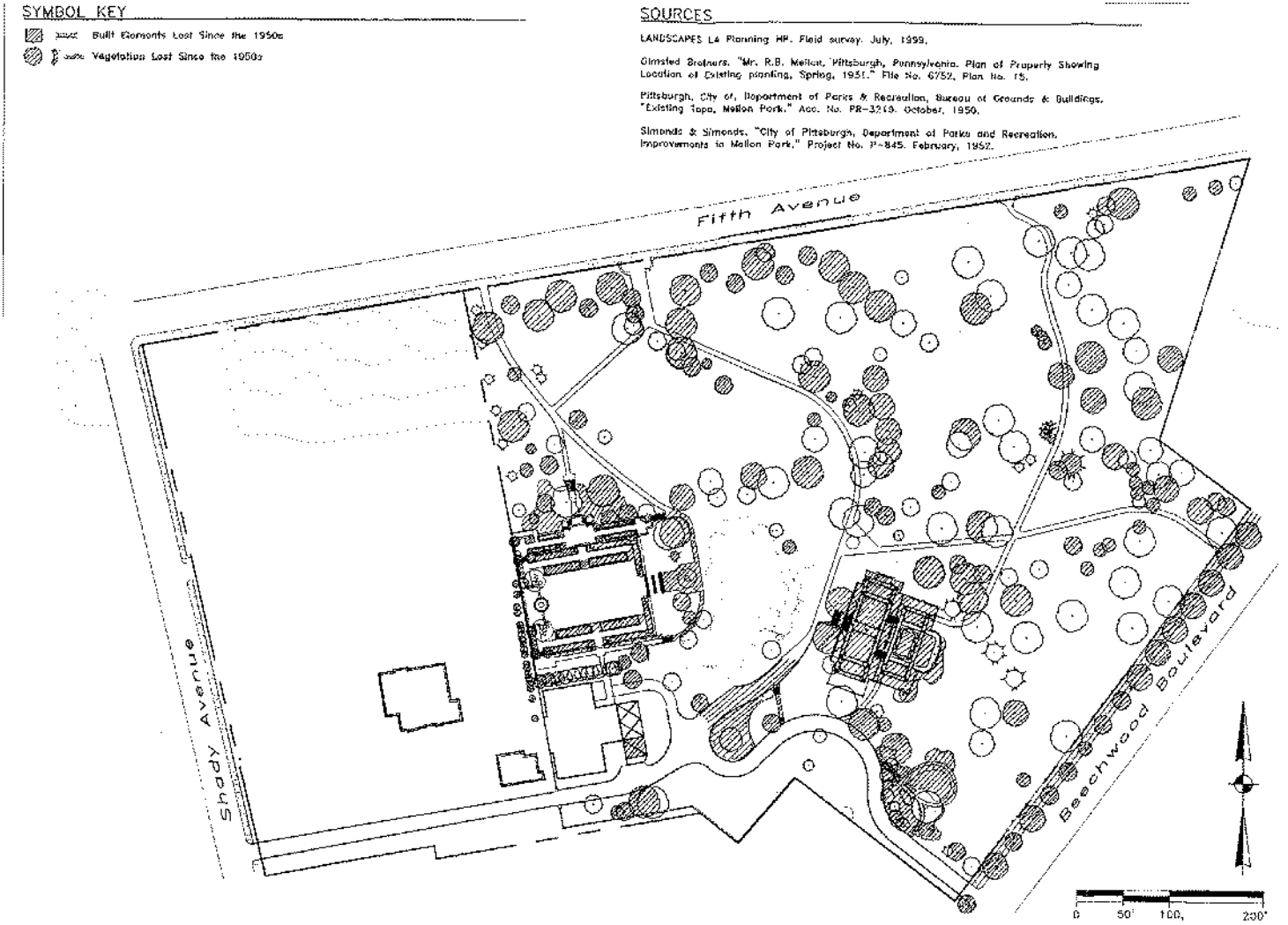
Previous Planning



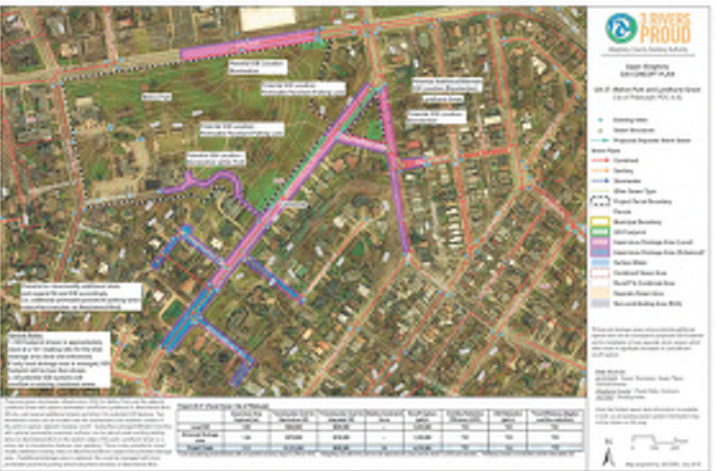
1930s Olmsted Brothers Plan



1945 Recreation Plan



2000 Historic Landscape Preservation, Maintenance, and Management Plan



Project Goals



Create a unifying
vision

Prioritize future
improvements

Leverage other
projects

Focus on **Equity** and
Inclusion

Community Driven
Process

Public Engagement Approach



Public Engagement Principles

Open Communication and Transparency:

Legitimate processes and credibility are built through transparency and open communication with all stakeholders.

Maximize Participation:

Well-designed engagement processes increase participation of residents and stakeholders.

Value Relationships:

Human relationships with the community foster respect and increase engagement from representative community groups and residents. Project leads should value those relationships in any process.

Build a Foundation of Trust:

Reconcile historic inequities to build a new foundation of trust.

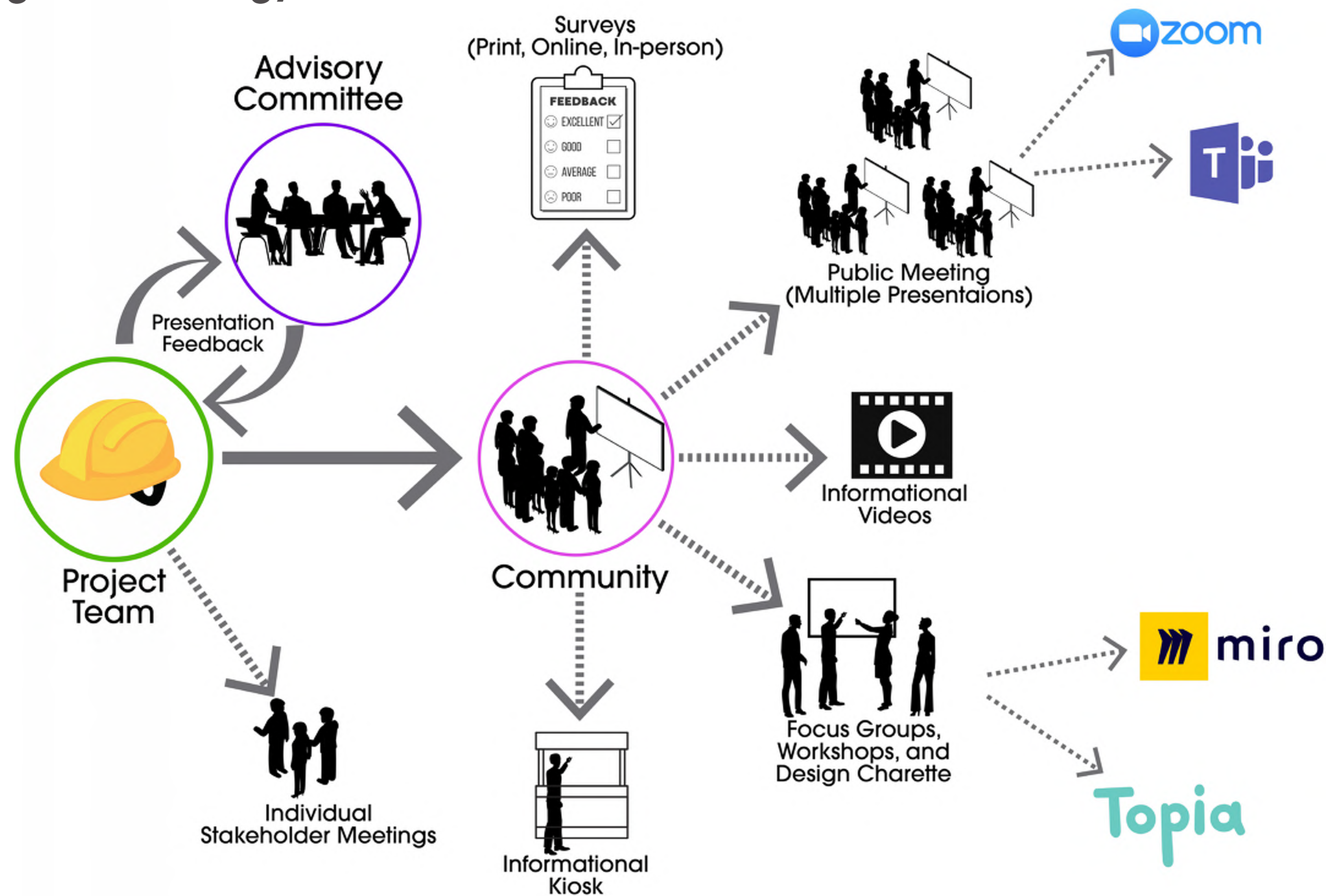
Center Equity and Fairness:

Acknowledge systematic issues and make intentional efforts to address equity considerations in any engagement process.

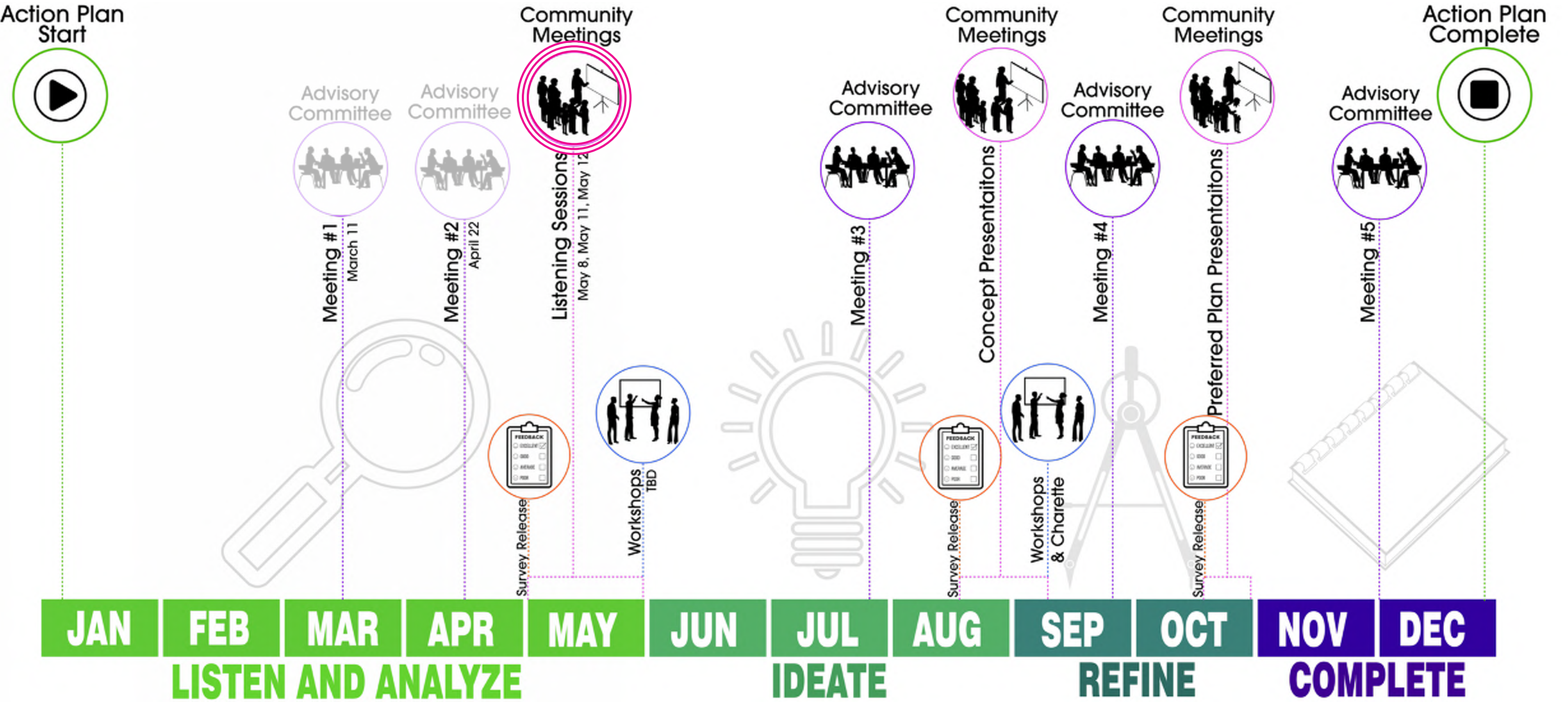
FUN:

*An added principle.
Engagement should be enjoyable!*

Engagement Strategy



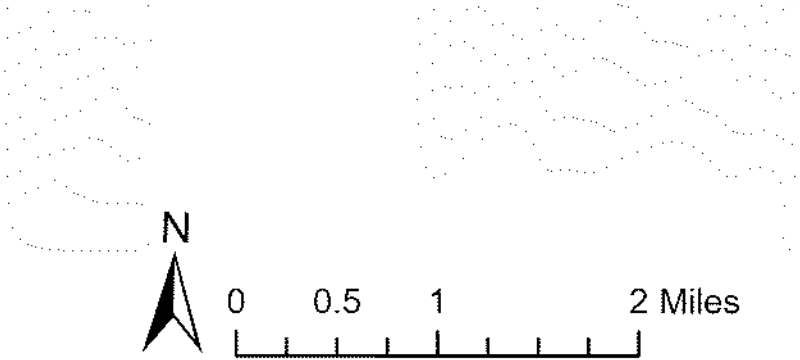
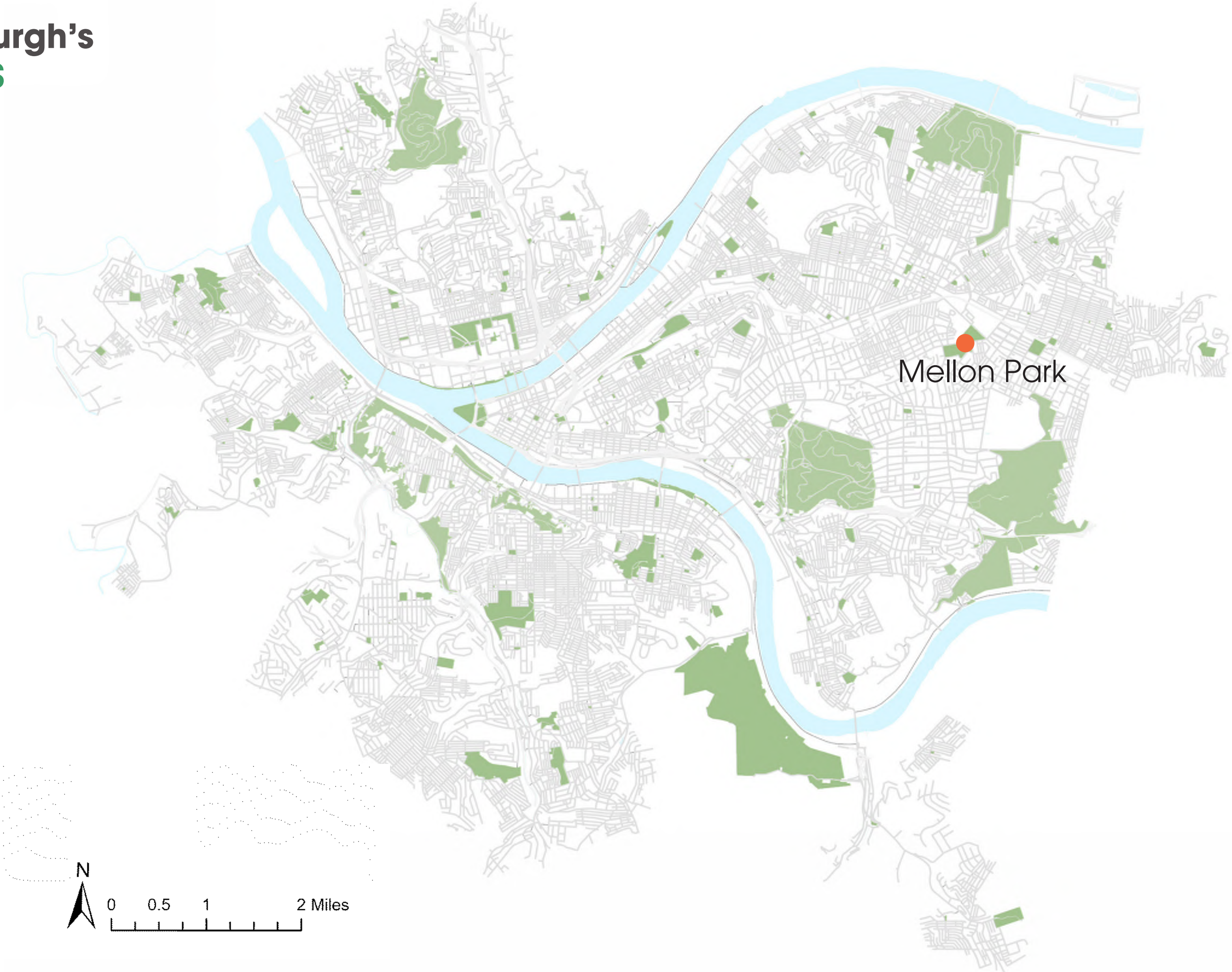
Timeline



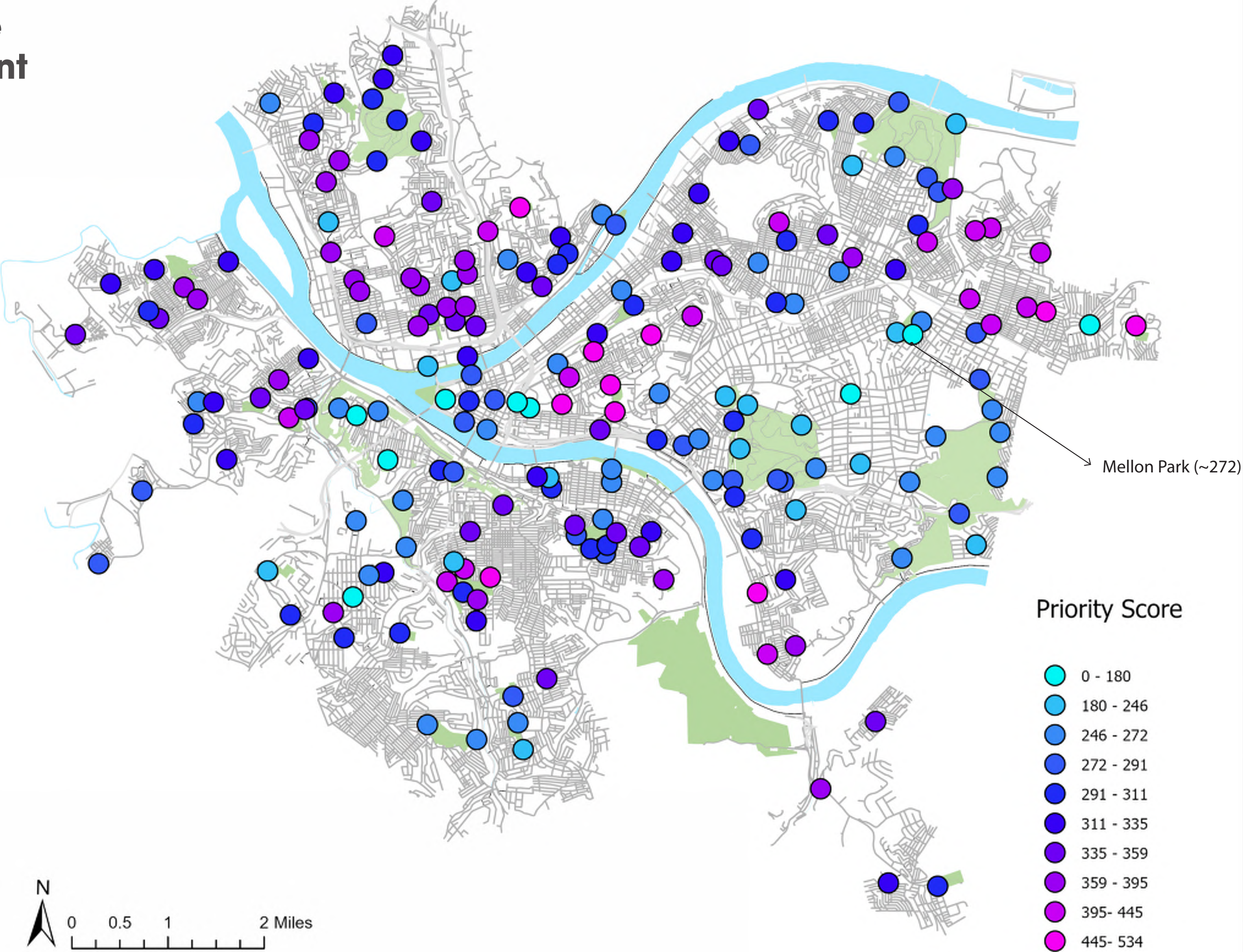
Why MELLON PARK?



Pittsburgh's PARKS



Equitable Investment Strategy





Historic Designation

Preserve and **Protect** the
Historic Integrity of the Park

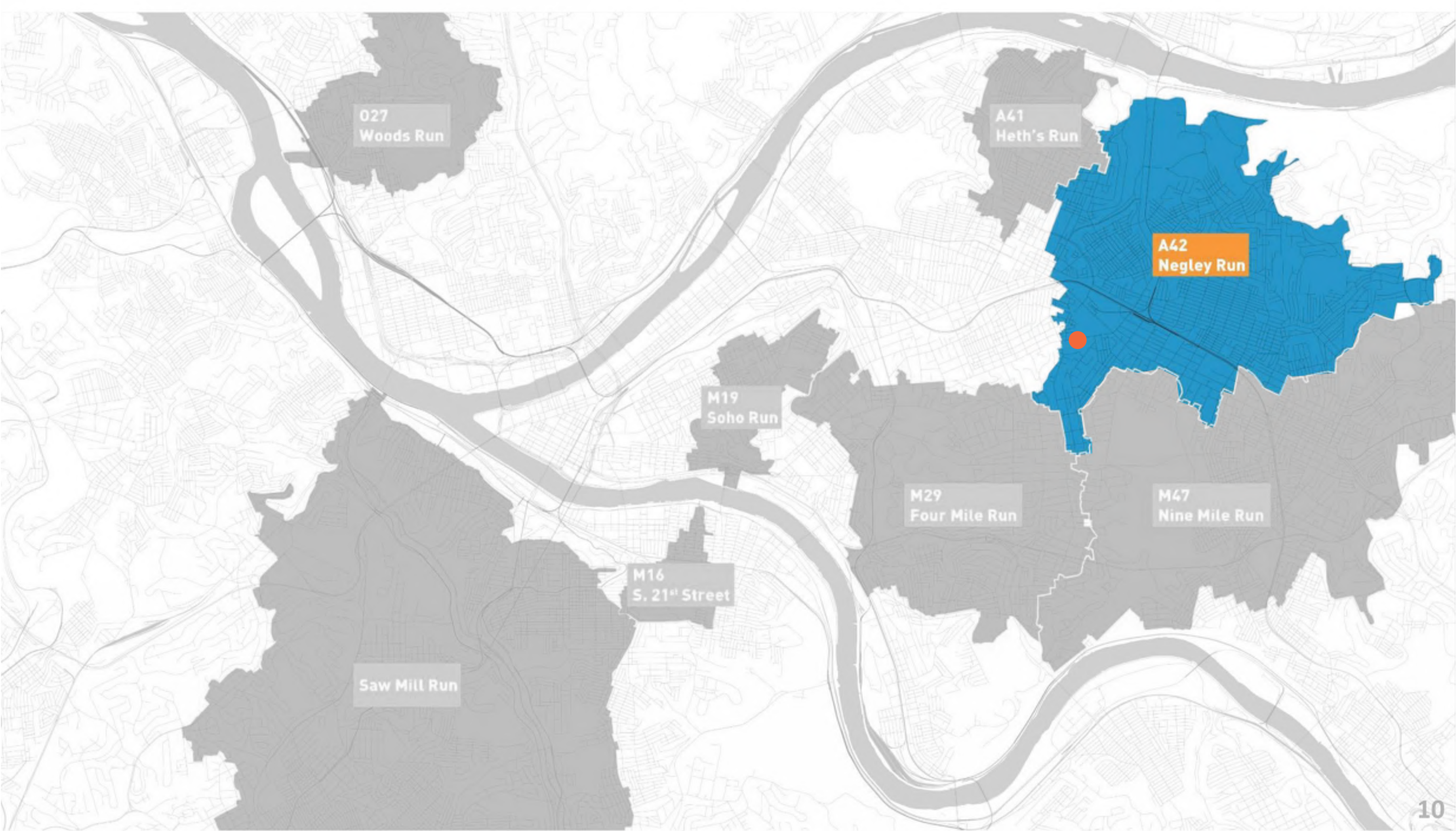
Adhere to Secretary of
Interior **Standards** for
Preservation Treatments:

- **Preservation**
- **Restoration**
- **Reconstruction**
- **Rehabilitation**

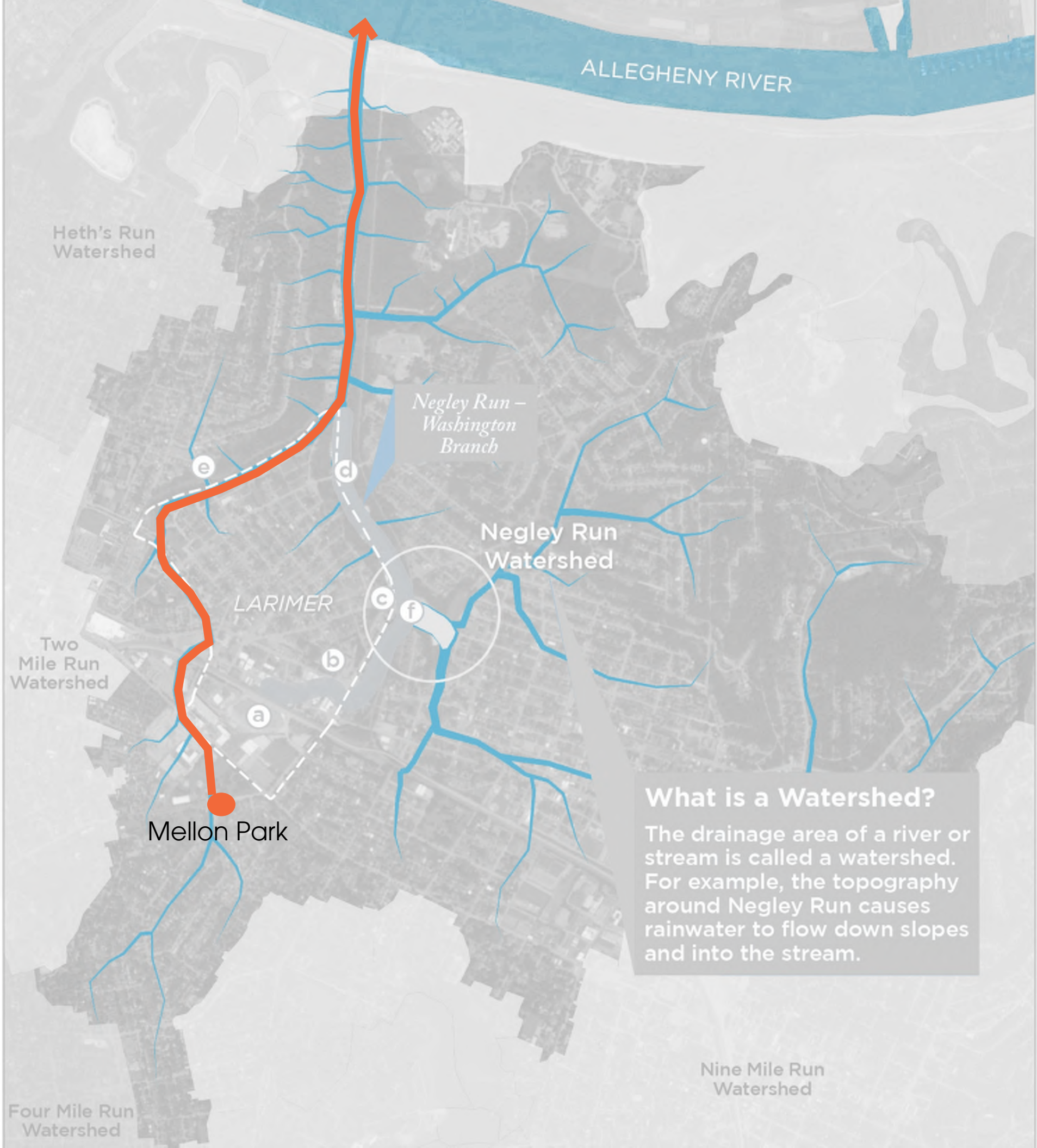
Balance **Preservation** with
Community Need

Establish a **Treatment** Plan
for **Future** Improvements

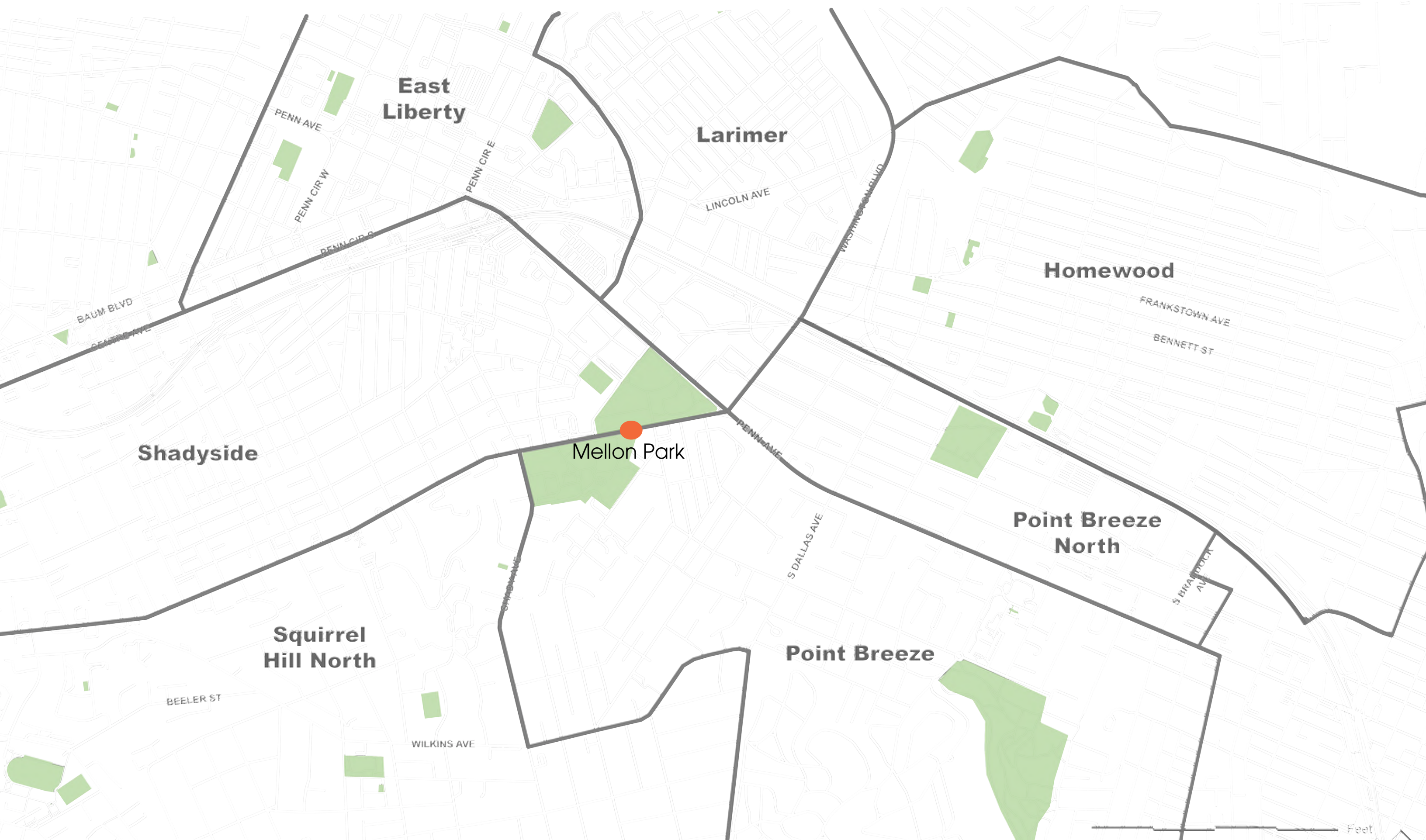
Priority Watersheds



Negley Run



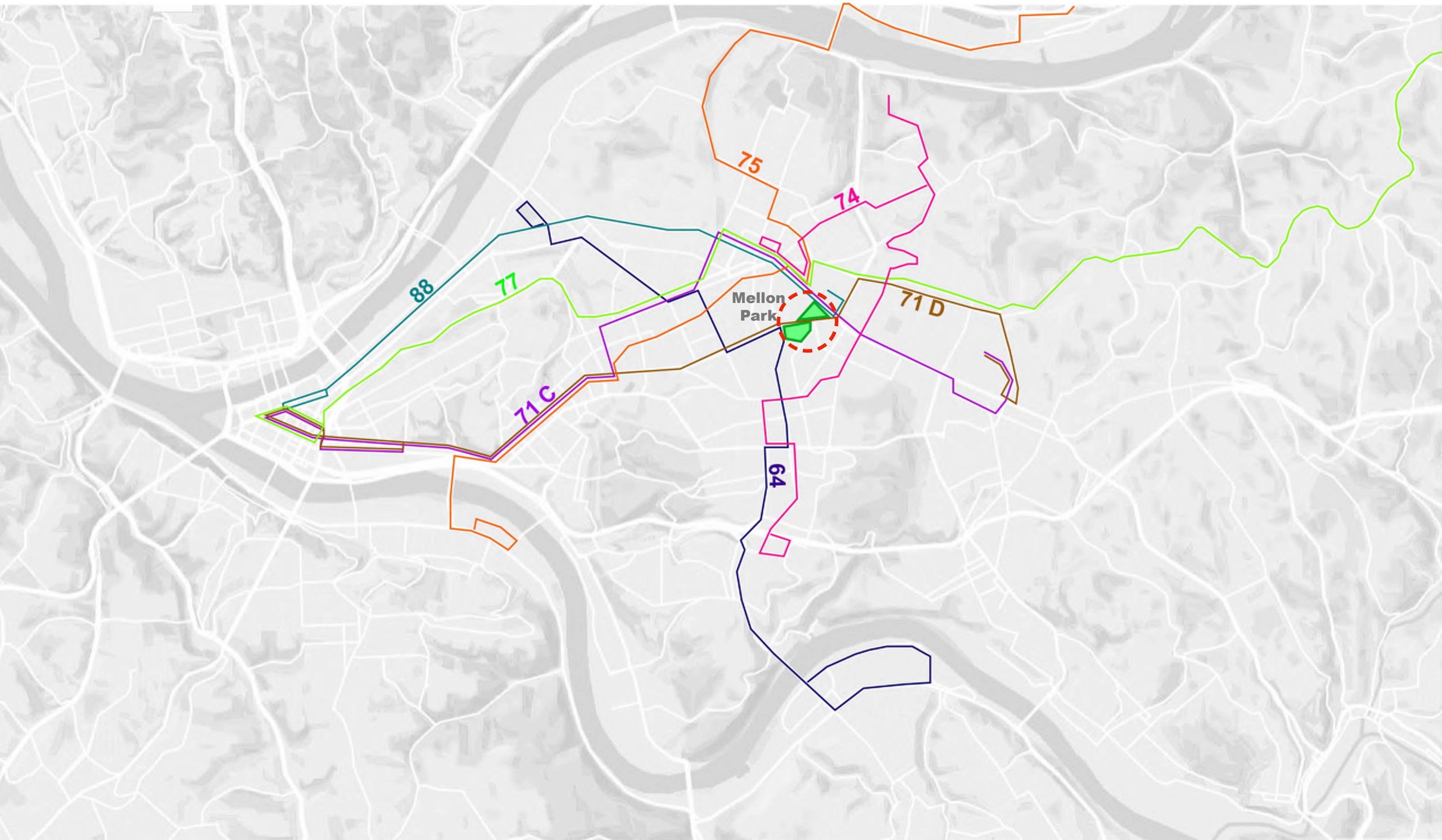
Neighborhoods



Park Context



Transportation Connectivity



Transportation Connectivity



Zooming In



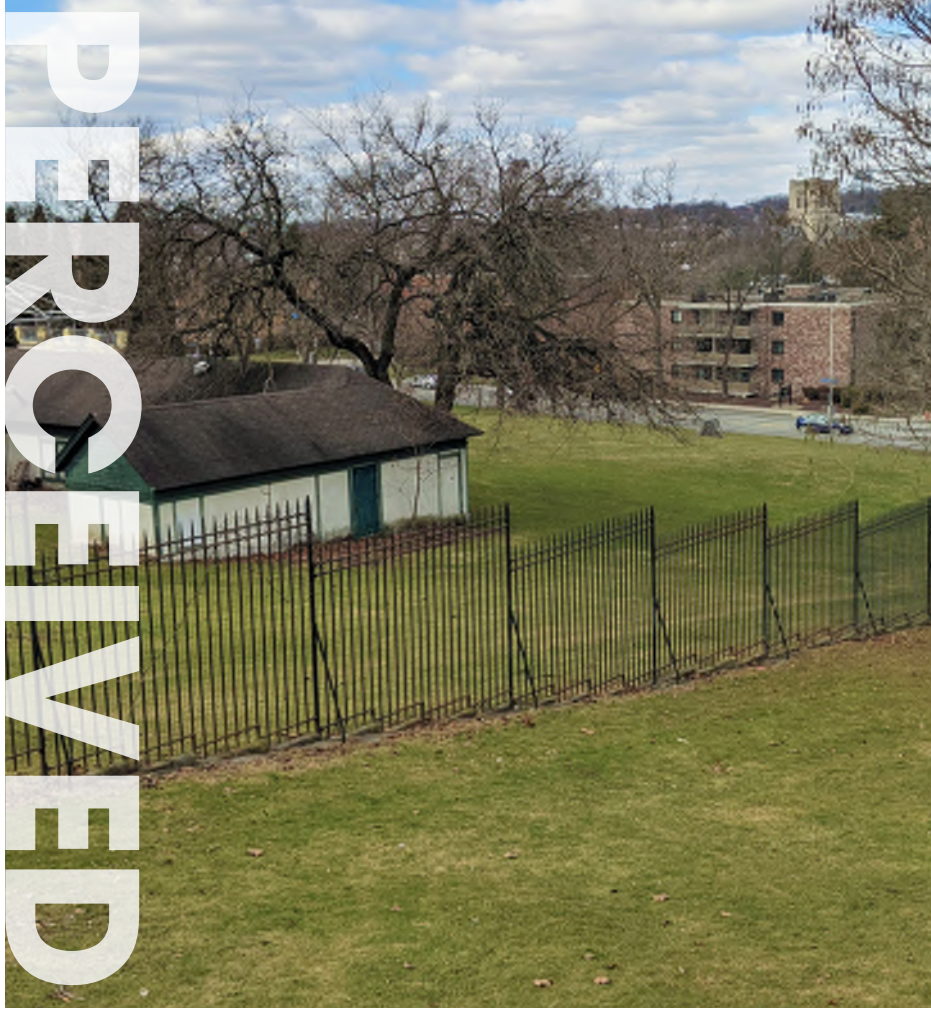
Park Units





PARK ACCESS

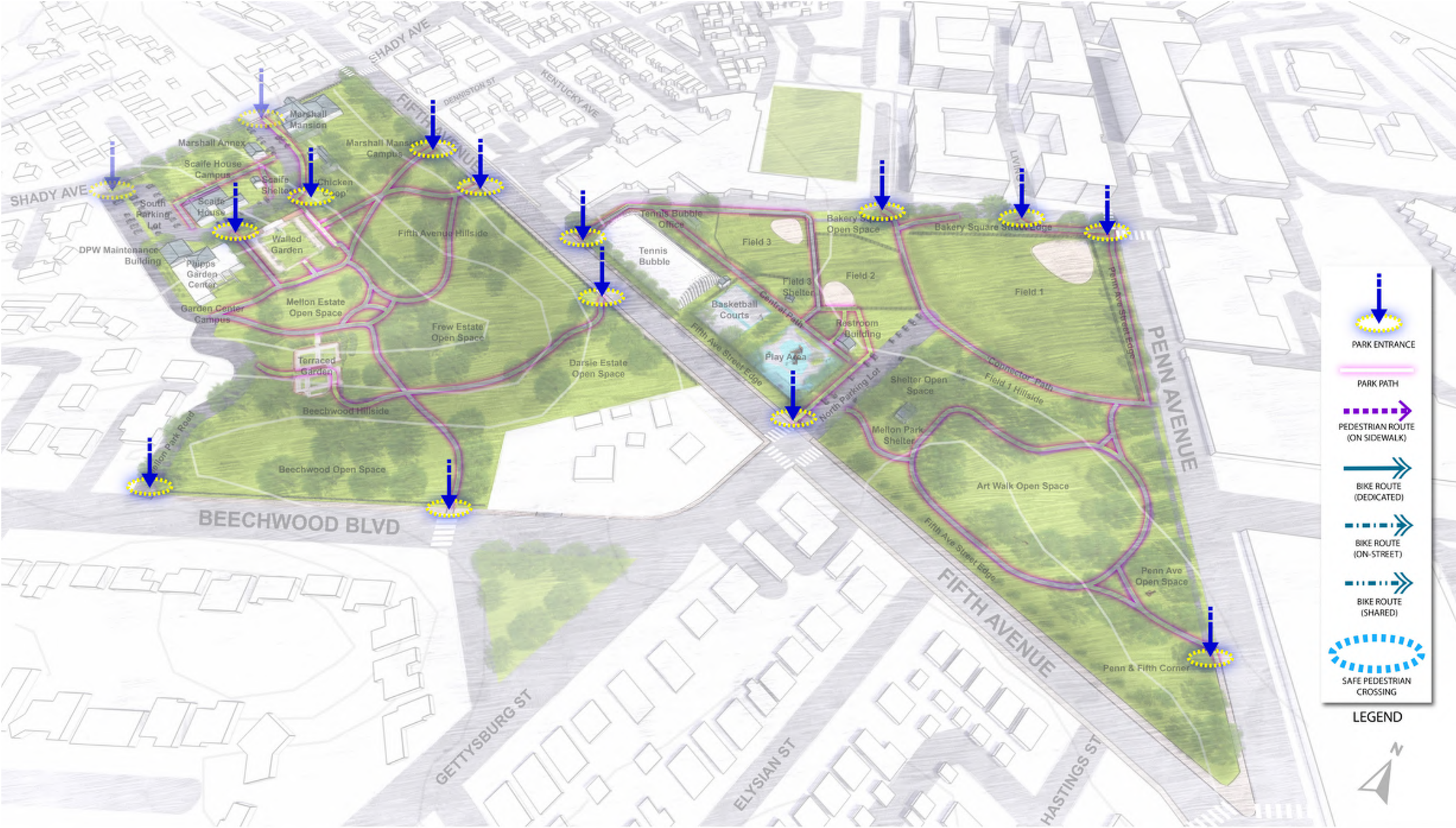
Edges



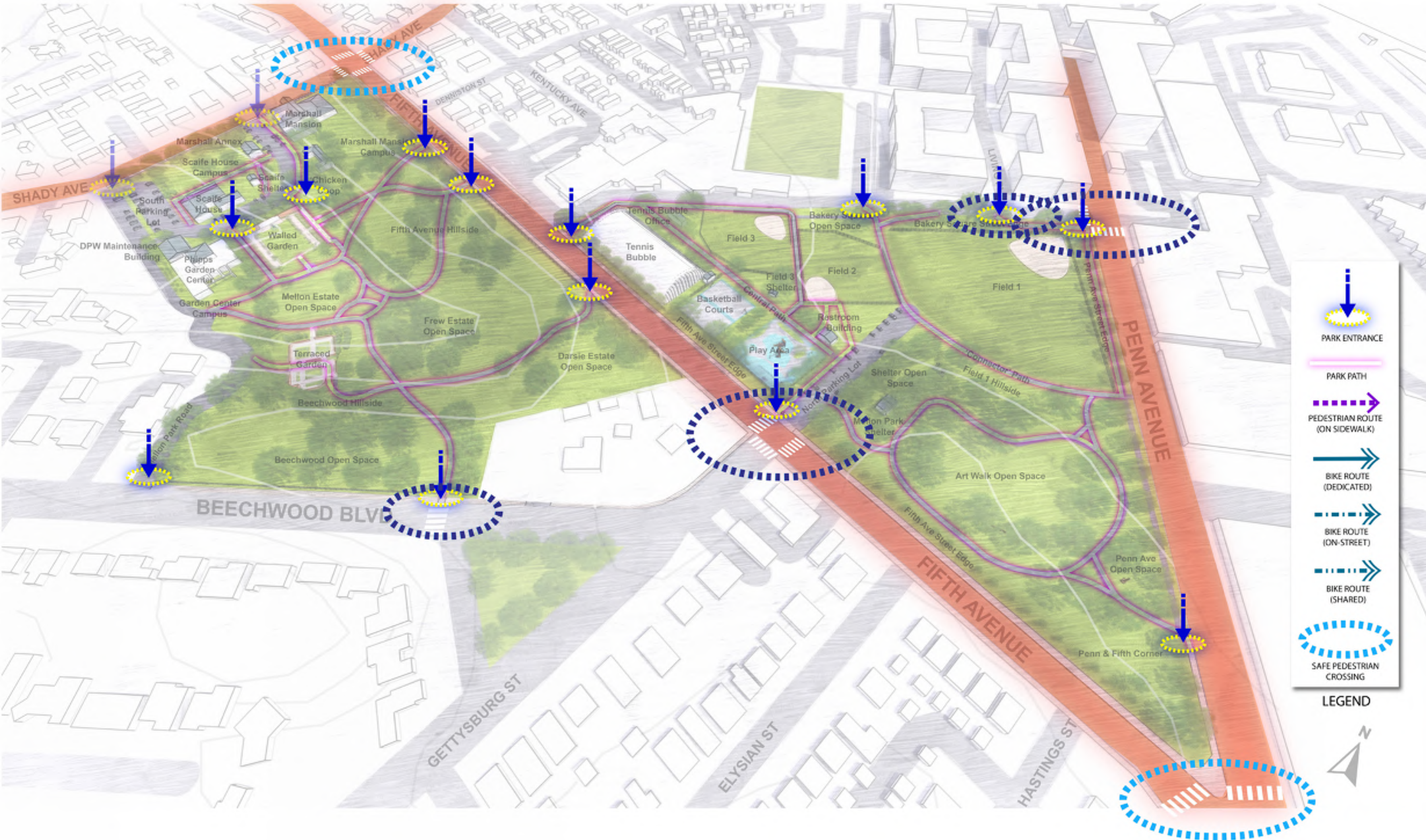
Edges



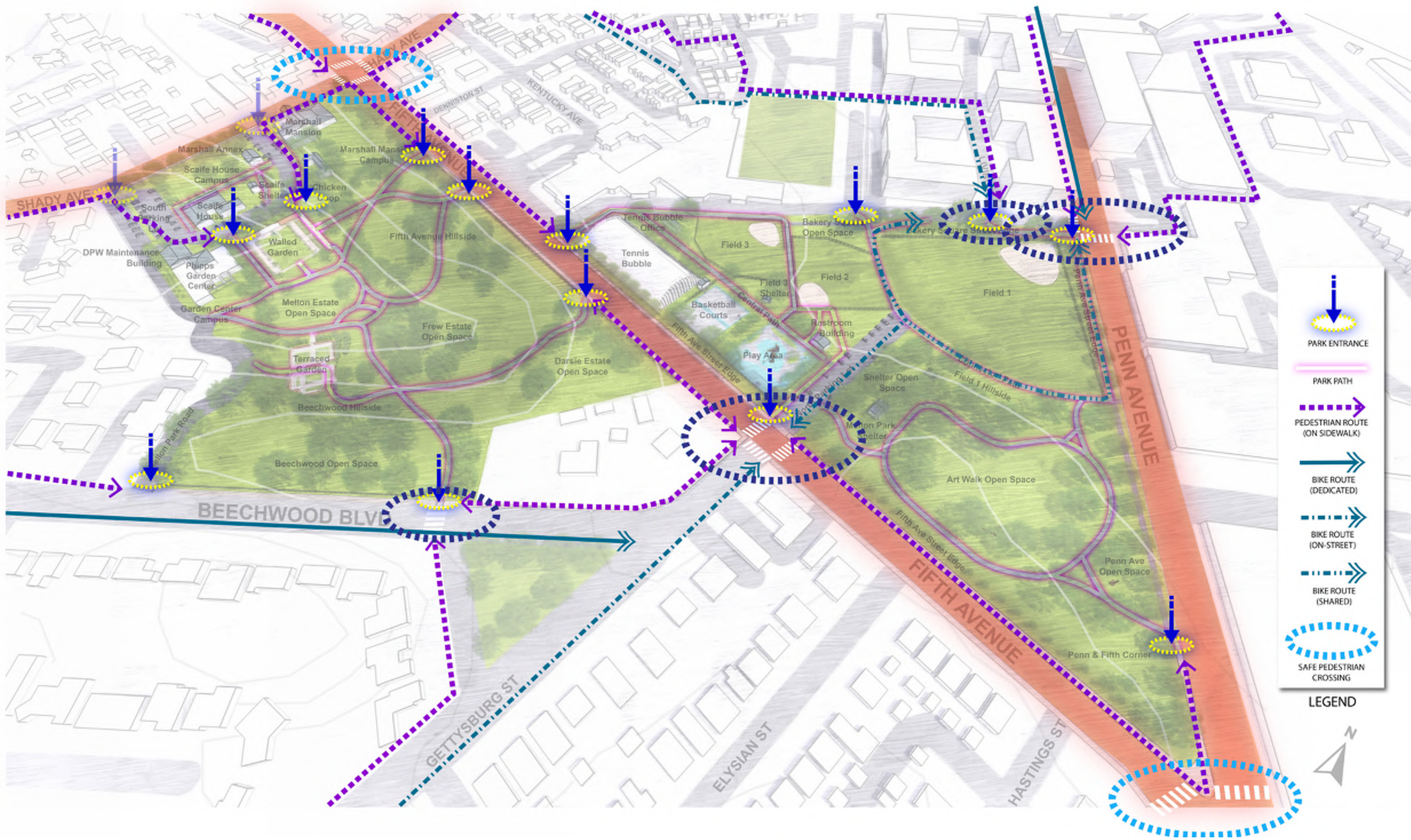
Entrances and Circulation



Entrances and Circulation



Entrances and Circulation



Parking



PARK USE



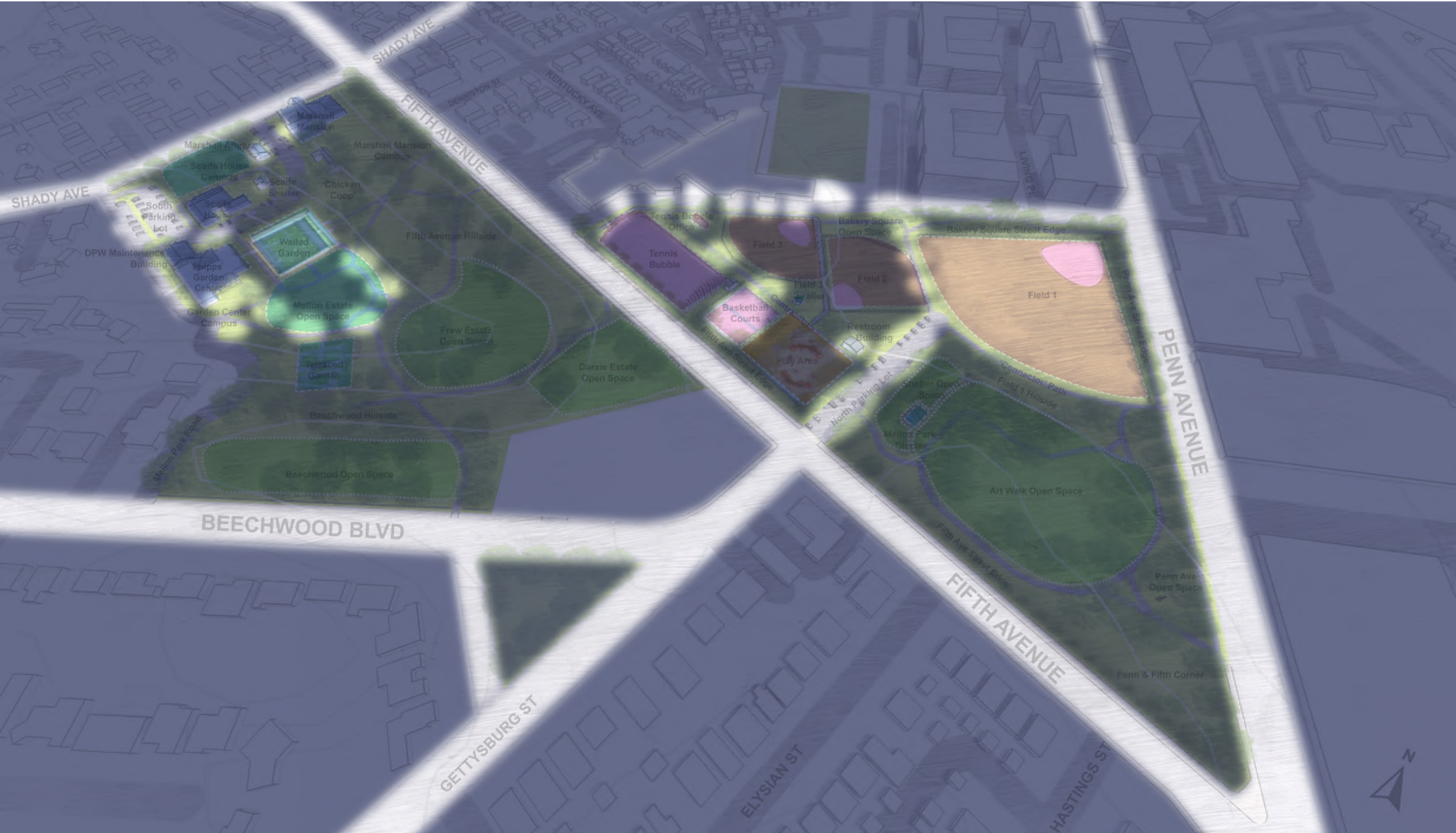
Activity



Activity



Lighting and Evening Use





PARK OPPORTUNITIES

History



Art

A



B



C



D



A
Five Factors
Peter Calaboyias

B
Untitled (January Sprinter)
Thomas Morandi

C
Steelcityscape
Aaronel DeRoy Gruber

D
Forbes Road Monument

E
Mellon Park Fountain
Edmund Amateis

F
7:11 AM 11.20.1979
79.55°W 40.27°N
Janet Zweig

G
Unknown

H
Unknown

LEGEND



E



F



G



H

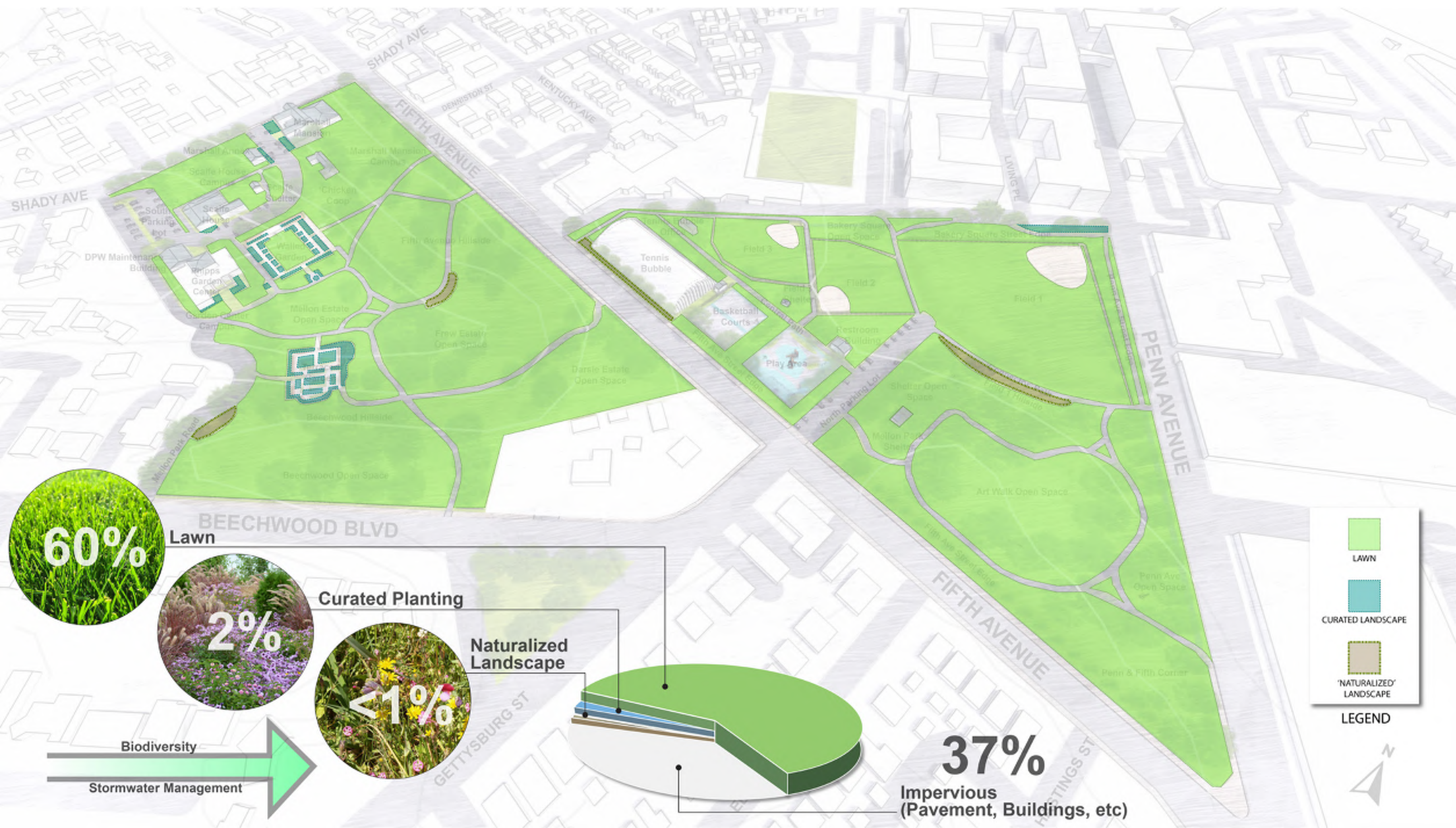


Trees

Mellon Park is a Level 1 Arboretum!



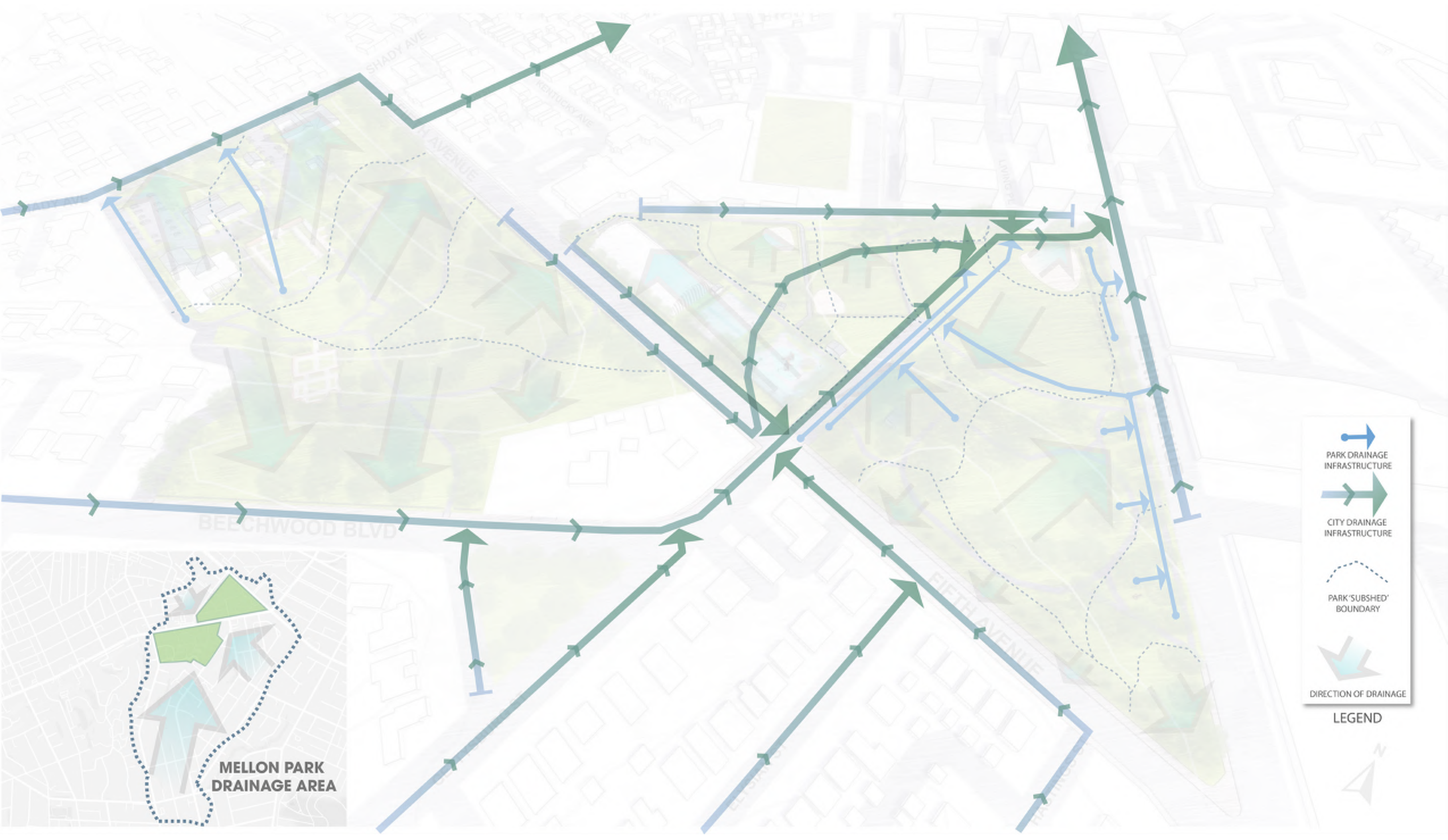
Ecology



Stormwater



Stormwater



BREAKOUT DISCUSSIONS



What is your **FAVORITE** thing about Mellon Park?

What is your **LEAST** favorite thing about Mellon Park?

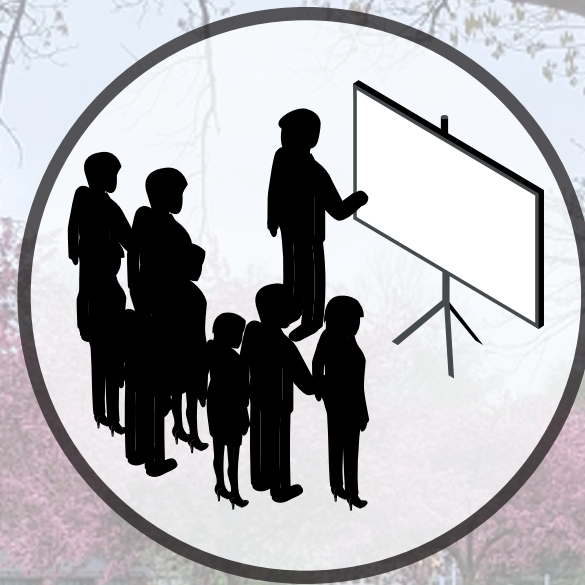
What would you **CHANGE** about Mellon Park?

NEXT STEPS



Fill out a survey!

<https://engage.pittsburghpa.gov>



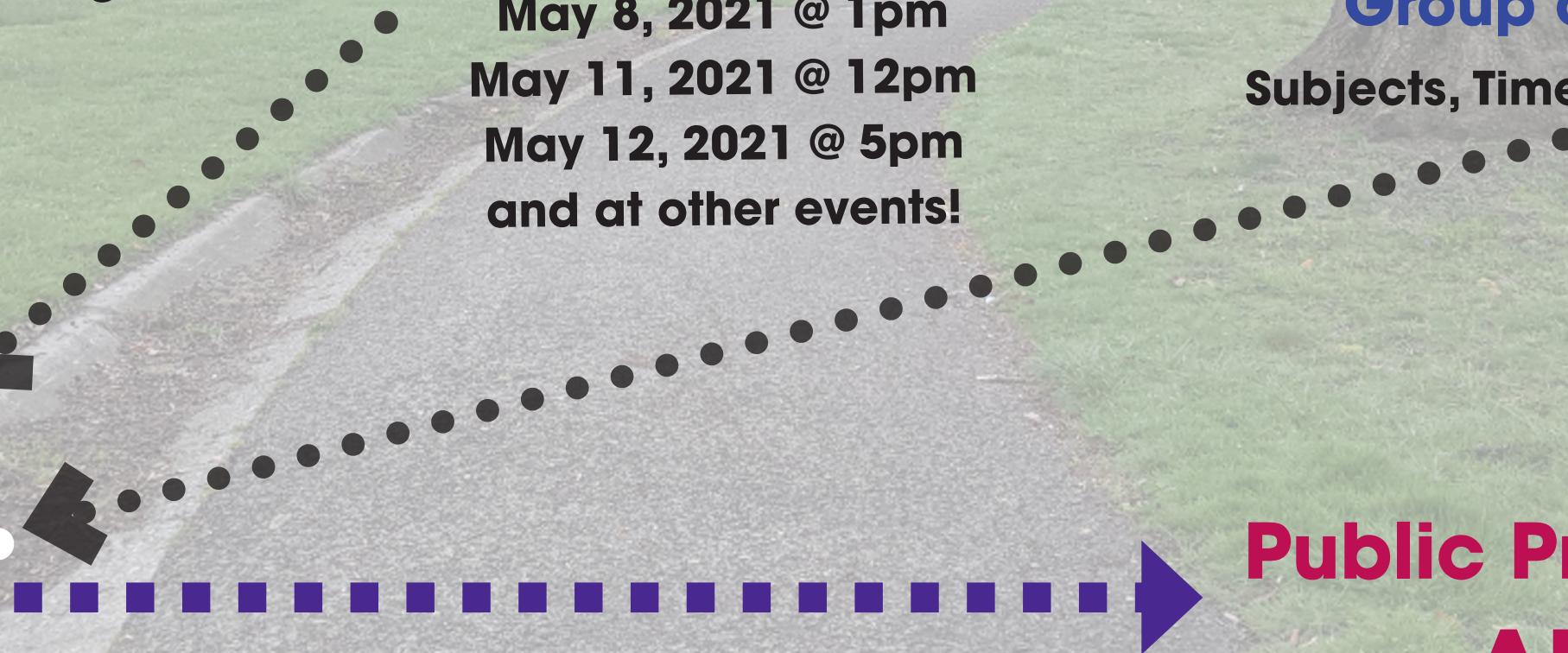
Public Meetings

May 8, 2021 @ 1pm
May 11, 2021 @ 12pm
May 12, 2021 @ 5pm
and at other events!



Participate in a Focus Group or Workshop

Subjects, Times, and Dates TBD



**Public Presentations
in AUGUST**

Develop Concepts!



Pittsburgh
Parks
Conservancy

THANK YOU!

Please don't hesitate to reach out:
gwhite@pittsburghparks.org

