



Equity TAG Meeting #1

Josiah Gilliam (Office of Equity), Derek Dauphin (City Planning)

October 27, 2021

Overview

- Introductions
- Background on Oakland Plan process and your role
- Review and discussion of strategies: Mobility and Infrastructure
- Reminder of EngagePGH page and further comments
- Next week's meeting: Development and Community

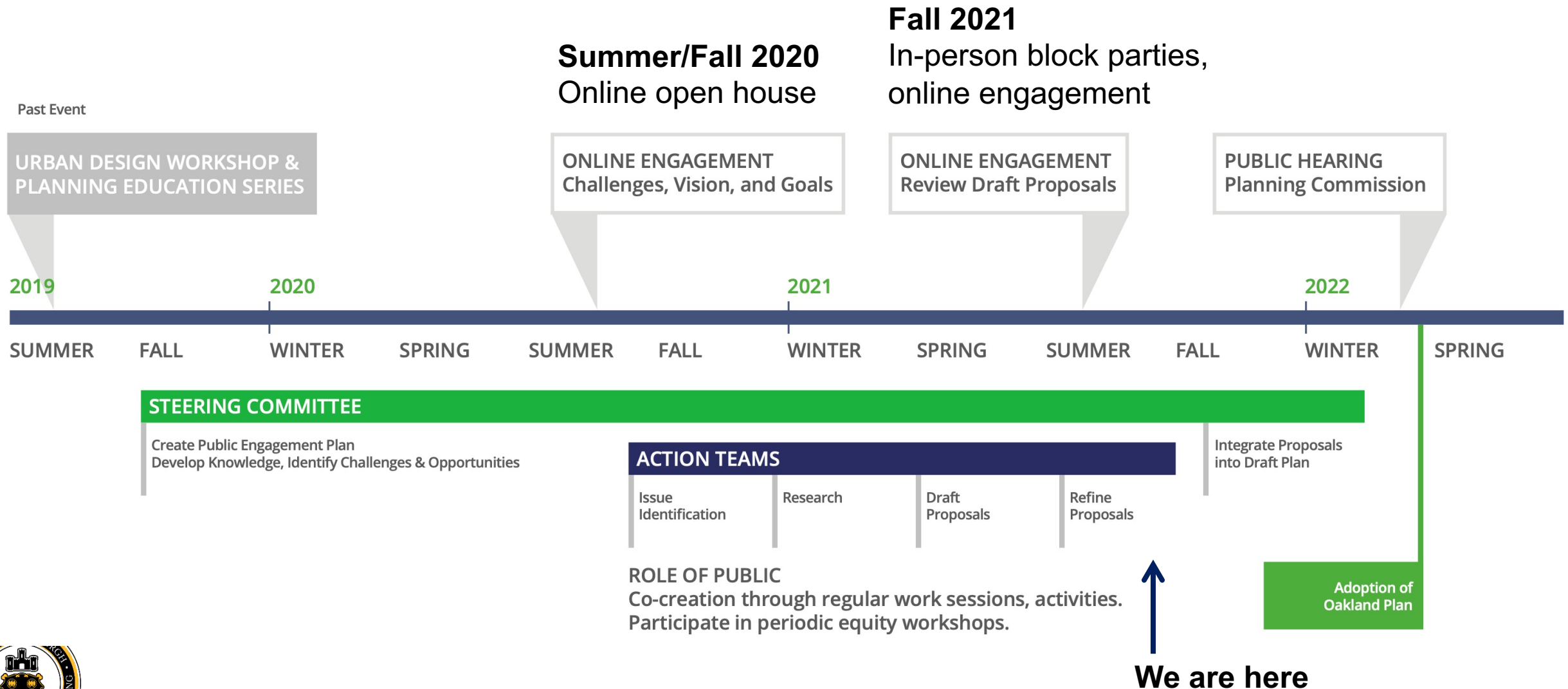


Oakland Plan

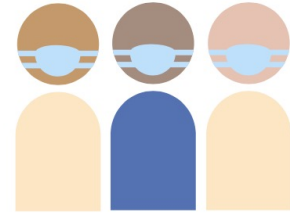
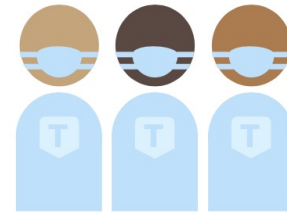
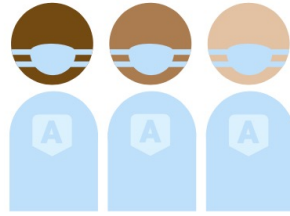
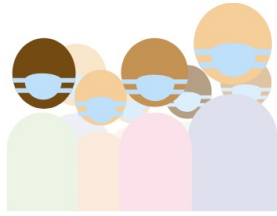
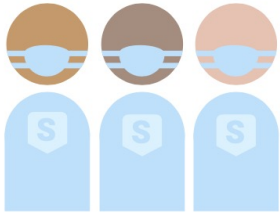
- City of Pittsburgh leading effort in partnership with the Oakland community and other agency partners.
- Guided by 30+ member Steering Committee that represents diverse stakeholder groups in Oakland (non-profits, residents, institutions, faculty, businesses, students, cultural organizations, service organizations).
- Started in October 2019 and expected to conclude in early 2022.
- Will result in 10-year plan with a shared vision for Oakland's future and the projects and programs necessary to make that vision a reality.
- Once adopted by the Planning Commission, the Oakland Plan will become City policy and guide public and private investments in the area.
- New land-use regulations, transportation, and infrastructure improvements, and public programs may also be recommended by the plan.
- The plan area generally includes the neighborhoods of North Oakland, Central Oakland, South Oakland, and West Oakland.



Planning Process



Who's Who and What They Do The People Behind the Plan



Who	Steering Committee Advisory body with up to 30 member organizations that represent most stakeholder groups.	Community A person with an interest or concern in the neighborhood.	Action Teams Team comprised of Steering Committee members, residents, other stakeholders, and public agency staff.	Technical Advisory Group Group composed of experts that focus on complex topic(s).	Staff Professional staff from public, non-profit, and private sector organizations that manage the planning process.
What	They engage the stakeholder group representatives, produce elements of the plan, and integrate the work of the Action Teams.	They provide input and feedback throughout the planning process.	They identify issues and conduct research to fully understand topics, and develop actions and identify resources to address them.	They support work of Action Teams by providing clarity and detail for complex topics.	They work to achieve full community and stakeholder participation in the planning process.
When	Organize	Organize	Organize	Organize	Organize
	Visualize	Visualize	Visualize	Visualize	Visualize
	Strategize	Strategize	Strategize	Strategize	Strategize
	Formalize	Formalize	Formalize	Formalize	Formalize
Deliverables	Draft Public Engagement Plan Vision Goals Review Work From Action Teams	Input on All Vision and Goals Review Work From Action Teams Review Plan Drafts	Draft Policies, Projects, Programs, Partnerships, and Targets	Draft Strategies for Complex Topics	Coordinate and Facilitate Process Conduct Research and Engagement Create Drafts of Deliverables



Work of this Group

Our work will involve reviewing 3-4 strategies from the four topic-based Action Teams: Mobility, Infrastructure, Development, and Community.

During Fall 2019 and Winter 2020, the project team worked with the Steering Committee to establish shared goals for diversity, equity, and inclusion in the planning process. These discussions led to an equity strategy that has been integrated into the planning and process and intentionally engages underrepresented and marginalized groups in Oakland. Groups identified in Oakland include:

- African-American residents
- University students
- Immigrants and newcomers

We appreciate you agreeing to participate to represent the perspectives and needs of these three groups.



Oakland Plan Equity Strategy: <https://engage.pittsburghpa.gov/oakland/oakland-plan-equity>

Work of this Group

We will review 3-4 strategies from each Action Team with you. We ask you to view them through the lens of the group(s) you represent and help us to:

- Improve the scope and nature strategies to better overcome inequities and better detail what success looks like in terms of equity;
- Identify any related inequities that staff should be aware of related to the topic;
- Help avoid any pitfalls; and
- Help reduce the potential for unintended consequences that might create further inequities as a result of implementing the strategy.



Oakland Plan Equity Strategy: <https://engage.pittsburghpa.gov/oakland/oakland-plan-equity>



PROJECT: HERRON HILL PUMPING STATION COMMUNITY CENTER AND PARK

The Oakland Plan process has identified the desire for a number of public services throughout the neighborhood. These include new or improved open spaces, community centers, and programming that brings together the community including across generations. Community members in North Oakland brought forward a specific site and concept on publicly owned property which is briefly outlined on this page.

PROJECT ILLUSTRATION



PROJECT COMPONENTS

Community Center

The Herron Hill Pumping Station is actively used by PWSA, but the annex building behind it could be repurposed to host a Healthy Active Living Center or equivalent as well programming and activities.

Open Space

This 1.6 acre space could be improved with park amenities that work in concert with the community center. The site is surrounded by residential buildings that provide users and passive surveillance of the site.

Historic Preservation

The Herron Hill Pumping Station was recently listed on the National Register of Historic Places. Tax credit funding could be used to restore historic windows, preserving built history and beautifying the area.

Programming

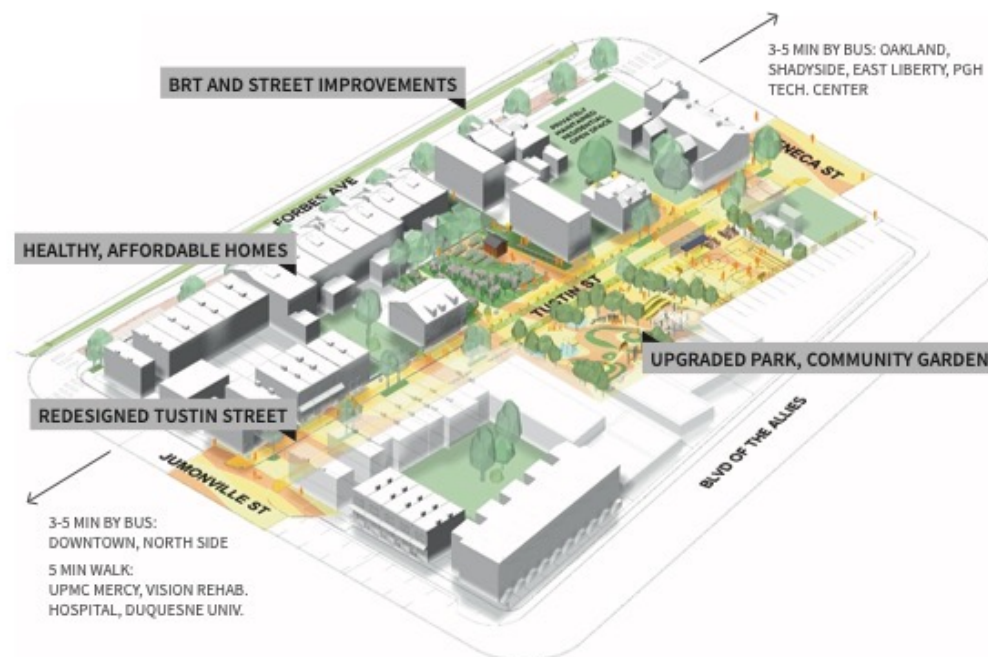
From early discussions, there are a number of Oakland-based organizations, including the University of Pittsburgh, who would be interested in hosting programming at the site.

Tustin Smart Block

A public-private partnership to improve Uptown's only park, surround it with healthy and affordable housing, and connect it to jobs via Bus Rapid Transit (BRT).

Consistent with the ECOINNOVATION DISTRICT PLAN vision, the Tustin Smart Block concept proposes public and private investment in one of Uptown's few intact residential blocks. Infrastructure and homes in need of upgrades present a unique opportunity to lock in affordability at the

same time that improvements to the park and surrounding streets make this area a healthier, more enjoyable, and better connected place to live. A community-led program of block-level planning could follow to help transform Uptown while maintaining affordability.



Tustin Smart Park

Free wifi, solar powered outlets and lights, and public art are part of a City project already underway. Future improvements to the park and community garden will be tied together by a street that prioritizes community uses and trees.

Water and Sewer

PWSA is currently costing replacement of lead water lines and new sewer laterals that connect to Forbes Ave. Costs of making these improvements can be reduced by including them as part of BRT street reconstruction.

Better Homes

Improvements to homes will make them energy efficient and healthy, and may include establishing a solar collective using the block's roofs to provide its power. Investments must be linked to agreements that keep homes affordable.

Bus Rapid Transit

A rebuilt Forbes Ave will have trees, green infrastructure, safe crossings, and protected bike lanes. With BRT, Downtown, Oakland, East Liberty, and the North Side will minutes away.





MOBILITY

This chapter focuses on how people get around and will typically include strategies for improving safety, reducing the negative impacts associated with traffic, and shifting trips to and from the planning area to more efficient and healthful modes of travel.

Required:

- Transit Service and Stations
- Pedestrian Access, Safety, Circulation
- Accessibility
- Bicycle Infrastructure
- Traffic Safety
- Parking

Optional:

- Mobility as a Service (MaaS)
- Freight Operations

Key Agencies: Dept. of Mobility and Infrastructure, Port Authority of Allegheny County, and Pittsburgh Parking Authority



Draft Mobility Strategies

1. Develop an Actionable Plan for Enforcement That is Cognizant of Inequities

Pursue more passive forms of enforcement and develop a community-based safety compliance approach through engagement with affected residents and community leaders. Develop an awareness campaign that reinforces no parking within bus zones, bike lanes, and on sidewalks.



Draft Mobility Strategies

1. Develop an Actionable Plan for Enforcement That is Cognizant of Inequities

Discussion prompts:

- What inequities do we feel need to be addressed by this strategy?
- How can enforcement to meet the need of one group (e.g., parking enforcement for cars on sidewalks), create or reinforce inequities for others (e.g., students, residents, low income meal delivery workers, etc.).
- How do we avoid a wicked problem situation and paralysis?



Draft Mobility Strategies

2. Identify Streets Where Traffic Calming Treatments Should be Evaluated

Compile a list of streets where speeding is observed and prioritize those where speed studies should be conducted. Implement traffic calming treatments should they be warranted. Identify residential streets used as cut throughs and potential treatments to dissuade such use.



Draft Mobility Strategies

2. Identify Streets Where Traffic Calming Treatments Should be Evaluated

Discussion prompts:

- This is a process strategy. How the process is managed seems key to whether this strategy results in overcoming inequities.



Draft Mobility Strategies

3. Make the Bike(+) Network More Comfortable for All Users

Install bike infrastructure and traffic calming elements to make the bike network more comfortable for all users.



Draft Mobility Strategies

3. Make the Bike(+) Network More Comfortable for All Users

Discussion prompts:

- Bike riding can be viewed very differently by different communities. How is this topic viewed by the group you represent?
- Is there an unintended consequence of repurposing parts of the roadway to improve safety for cyclists? If so, how can this be managed?



Draft Mobility Strategies

4. Develop a Program to Help Pay for Sidewalk Improvements

Develop a program to help homeowners install and maintain sidewalks who may not be able to afford them otherwise. Identify potential funding sources as well as an entity that may be able to manage these funds.



Draft Mobility Strategies

4. Develop a Program to Help Pay for Sidewalk Improvements

Discussion prompts:

- The language in the strategy refers to homeowners. If the program is successful in providing this group with a way to improve their sidewalks, does it create inequities for other groups?
- How might a program be configured to provide broader benefits?





INFRASTRUCTURE

This chapter includes all non-transportation systems that nourish and maintain a district including how stormwater is handled, needs for open spaces, the energy systems that serve all buildings, and how waste is reduced and reused. There are many opportunities for these projects to meet multiple objectives (e.g., open spaces that also manage stormwater).

Required:

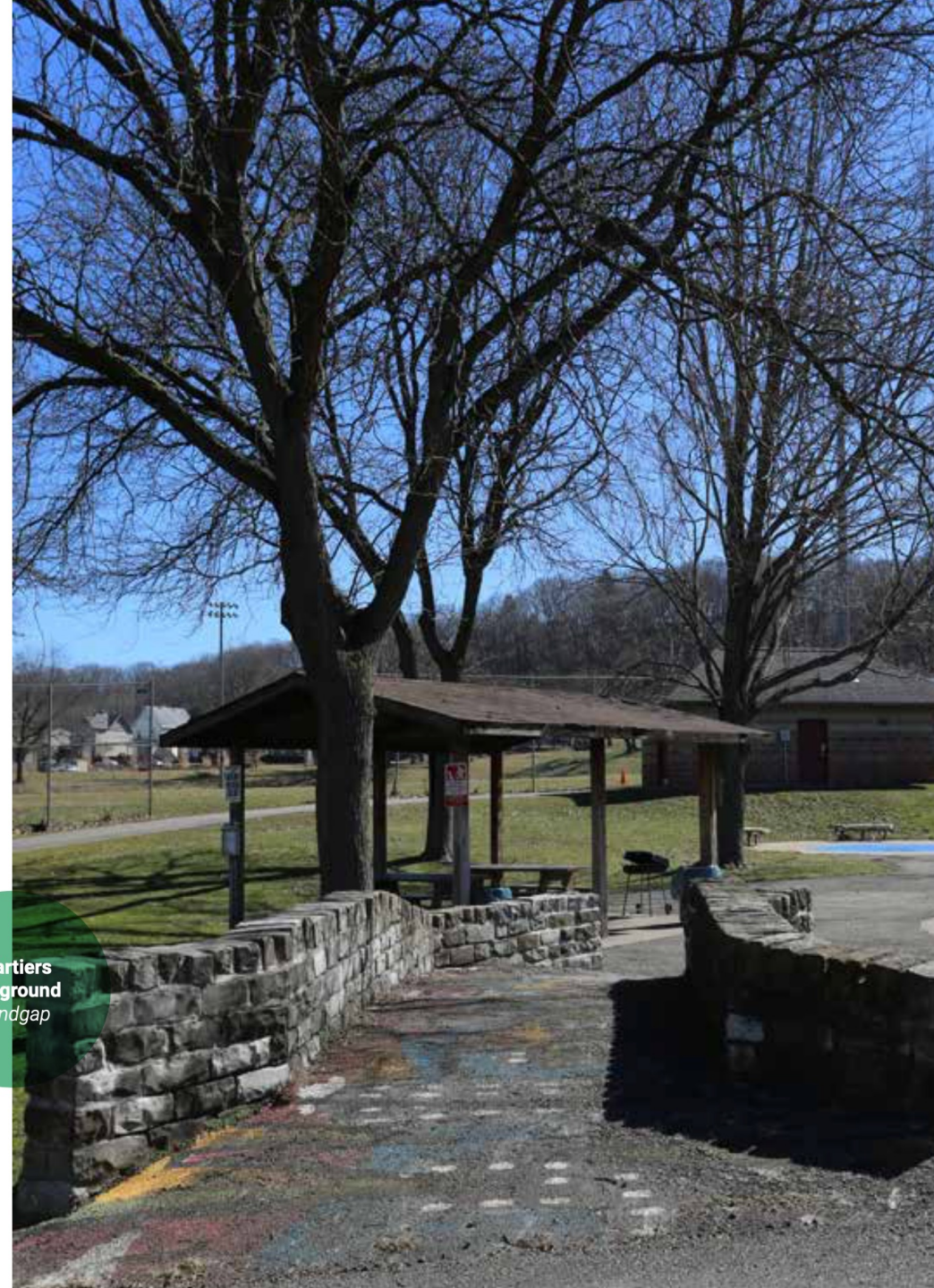
- Stormwater Management
- Floodplain (if applicable)
- Open Space
- Energy System Planning
- Waste Management and Recycling
- Tree Canopy
- Habitat Restoration
- Digital Network

Optional:

- Urban Agriculture
- Air
- Water Use
- Systems Integration

Key Agencies: Green Building Alliance (non-profit planning partner to the City), Dept. Of City Planning, Pittsburgh Water and Sewer Authority, Dept. of Public Works, Citiparks, and relevant utilities.

Chartiers
Playground
Windgap



Draft Infrastructure Strategies

1. Increase Tree Canopy

Establish an aggressive tree canopy goal for Oakland and work with partners on the best strategies for achieving this goal. Work with partner with TreePGH and TreeVitalize to target residential native tree giveaways and plantings in areas where street tree canopy efforts will be insufficient. Partner with institutions that have their own targets.



Draft Infrastructure Strategies

1. Increase Tree Canopy

Discussion prompts:

- Do the people you represent recognize tree canopy, heat island, and air quality as environmental justice or equity issues?
- Does the language preference any groups or put any of the groups you represent at a disadvantage for taking action on tree canopy?



Draft Infrastructure Strategies

2. Encourage More Community Gardens

Create a system of community gardens throughout the neighborhood that meet the needs of surrounding residents in terms of food and other functions. These could take place on public or institutional land or open space created by new development.



Draft Infrastructure Strategies

2. Encourage More Community Gardens

Discussion prompts:

- How important do you think community gardens are to overcoming food insecurity and health for the groups you represent?
- Are there ways to improve the strategy to speak more directly to disadvantaged groups or address more of their immediate needs?
- Are there other aspects to community gardens that are important to their value (or lack thereof) for the communities you represent (e.g., positive impact on sense of community, mental health, physical activity, etc.)?



Draft Infrastructure Strategies

3. Green Street Network

Establish a network of green streets, particularly in Central Oakland, in partnership with TreePGH, DOMI, PWSA, and Pitt. Consider how green streets, tree canopy, and open space improvements create a green network that complements pedestrian and bike corridors.



Draft Infrastructure Strategies

3. Green Street Network

Discussion prompts:

- Green streets can provide many benefits to a community from reducing flooding, providing tree canopy and green spaces, slowing traffic, beautifying an area. What elements are important to the group(s) you represent?
- Are green street improvements viewed as a sign of gentrification and/or displacement?
- Do they have any special value or baggage with your group(s)?



Draft Infrastructure Strategies

4. Citizen Climate Action Program

Work with local universities establish citizen-oriented program around climate actions that individuals can take. Pilot with Oakland residents, but plan to make the program available to all Pittsburgh residents. Broad topics with faculty from different schools/departments presenting different aspects of climate impacts and individual actions. Potential partnership with the Carnegie Libraries. Consider as online course or online in addition to in-person. Could have bite sized versions of the content for anyone and then if they want to get deeper knowledge, they can sign up for the course on a quarterly basis.



Draft Infrastructure Strategies

4. Citizen Climate Action Program

Discussion prompts:

- How can the topics and content of this kind of program have the greatest impact for your group(s)?
- How can the program be established to have the most meaningful connection to your group and therefore, the highest uptake/interest?



Reminder: We're Covering a Selection

We would greatly appreciate you reviewing and commenting on the full set of strategies on the EngagePGH site.

<http://engage.pittsburghpa.gov/Oakland>

Notes from both Equity TAG meetings are public and can be found at:

<https://engage.pittsburghpa.gov/oakland/oakland-plan-equity>



Community Service Hubs at Parks

Posted by [Derek.Dauphin](#) | 2 months ago

Identify locations such as Frazier Field/Fieldhouse and Herron Hill Pumping Station where open spaces can be combined with new or restored buildings to provide needed resident services such as daycares and community centers that have synergies with...

♥ 1 Likes 💬 3 Comments



Dedicate Land for Energy Needs

Posted by [Derek.Dauphin](#) | 2 months ago

Establish "energy parks" in Oakland that set aside land for future energy needs (e.g., district energy and community led solar solutions). Consider how the energy would be generated in determining the ideal location. For example, a sunny hillside...

♥ 2 Likes 💬 2 Comments



Next Week

- We'll focus on draft Community and Development strategies.
- You can review all strategies on the EngagePGH page.

C COMMUNITY

This chapter focuses on the existing residents, employees, students, and visitors of the planning area with proposals for how they can be better served by the district.

Required:

- Community Programs and Livability
- Cultural Heritage and Preservation
- Public Art
- Public Safety
- Public Facilities and Services
- Public Health

Optional:

- Community Uses in the Right-of-Way
- Nuisance and Enforcement Issues
- Schools and related programs (Required if within the plan area)

Key Agencies: Dept. of City Planning, Mayor's Office, Office of Equity, Dept. of Public Safety, Community Affairs, and Public Schools, County Health Department



D DEVELOPMENT

This chapter establishes the agenda for physical change to a district whether that be through new buildings, commercial corridors, residential areas, etc. Creating new affordable housing and commercial opportunities can be addressed in this chapter.

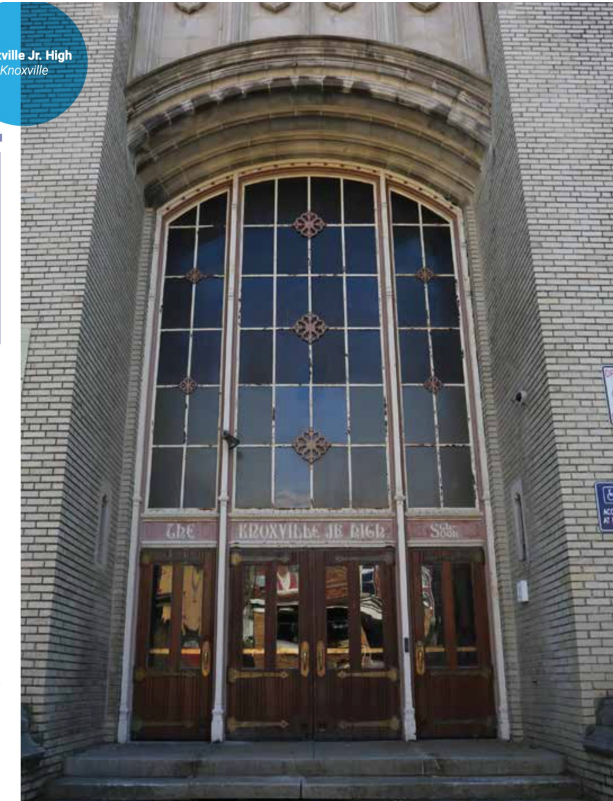
Required:

- Land Use Policy and Regulations
- Urban Sustainable Design
- Equitable Economic Development
- Housing

Optional:

- Commercial Corridors or Nodes
- Transit Oriented Development
- Brownfield Reuse and Remediation
- Schools
- Academic, Medical and Religious Institutions

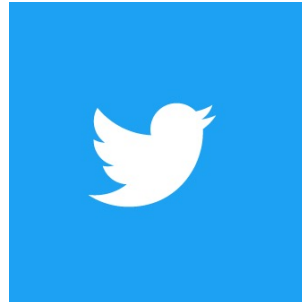
Key Agencies: Dept. of City Planning, Urban Redevelopment Authority, Pittsburgh Water and Sewer Authority, Housing Authority of the City of Pittsburgh, and the Dept. of Permits, Licensing and Inspections.



Where can you find us?



Pittsburgh City Planning



@PLANPGH
@resilientPGH



@planpgh

**Online at pittsburghpa.gov/dcp/oakland
and engage.pittsburghpa.gov/oakland**





DEVELOPMENT

Knoxville Jr. High
Knoxville

This chapter establishes the agenda for physical change to a district whether that be through new buildings, commercial corridors, residential areas, etc. Creating new affordable housing and commercial opportunities can be addressed in this chapter.

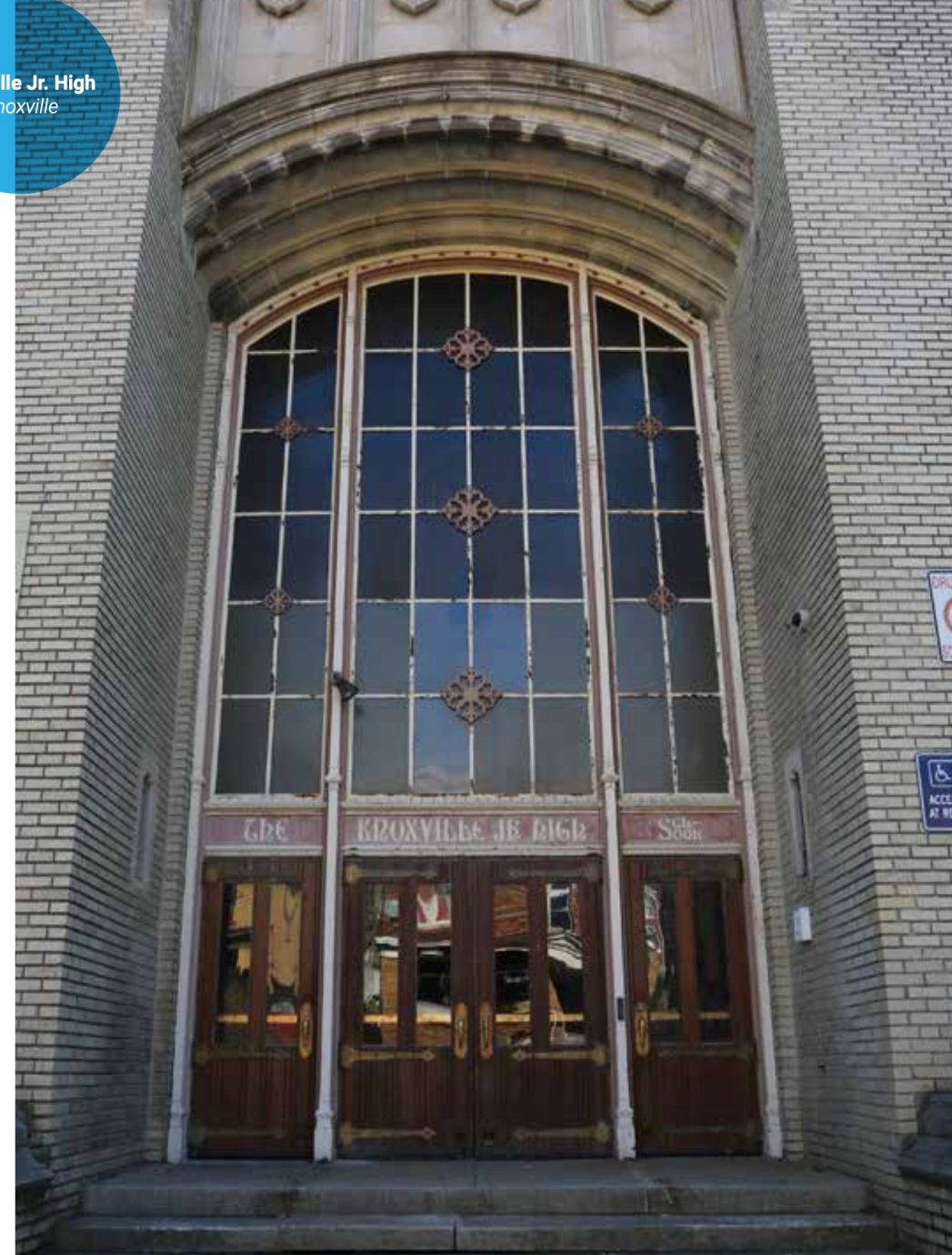
Required:

- Land Use Policy and Regulations
- Urban Sustainable Design
- Equitable Economic Development
- Housing

Optional:

- Commercial Corridors or Nodes
- Transit Oriented Development
- Brownfield Reuse and Remediation
- Schools
- Academic, Medical and Religious Institutions

Key Agencies: Dept. of City Planning, Urban Redevelopment Authority, Pittsburgh Water and Sewer Authority, Housing Authority of the City of Pittsburgh, and the Dept. of Permits, Licensing and Inspections.





COMMUNITY

This chapter focuses on the existing residents, employees, students, and visitors of the planning area with proposals for how they can be better served by the district.

Required:

- Community Programs and Livability
- Cultural Heritage and Preservation
- Public Art
- Public Safety
- Public Facilities and Services
- Public Health

Optional:

- Community Uses in the Right-of-Way
- Nuisance and Enforcement Issues
- Schools and related programs (Required if within the plan area)

Key Agencies: Dept. of City Planning, Mayor's Office, Office of Equity, Dept. of Public Safety, Community Affairs, and Public Schools, County Health Department

