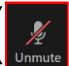


# WELCOME!

- Welcome to the Davis Avenue Pedestrian Bridge Preliminary Engineering Public Meeting
- Presentation: 6:30-7:30pm
- Q&A/Feedback: 7:30-8:30pm
- Please mute (  ) your microphone during the presentation.







# DAVIS AVENUE PEDESTRIAN BRIDGE

Preliminary Engineering Public Meeting  
December 2021



# INTRODUCTIONS

Department of Mobility and Infrastructure

Zachary Workman, P.E.- Project Manager

HNTB Corporation

Ryan Whittington, P.E.- Design Team Project Manager

UpStudio Landscapes LLC

Lisa Dugan, PLA, ASLA, LEED AP- Landscape Architect



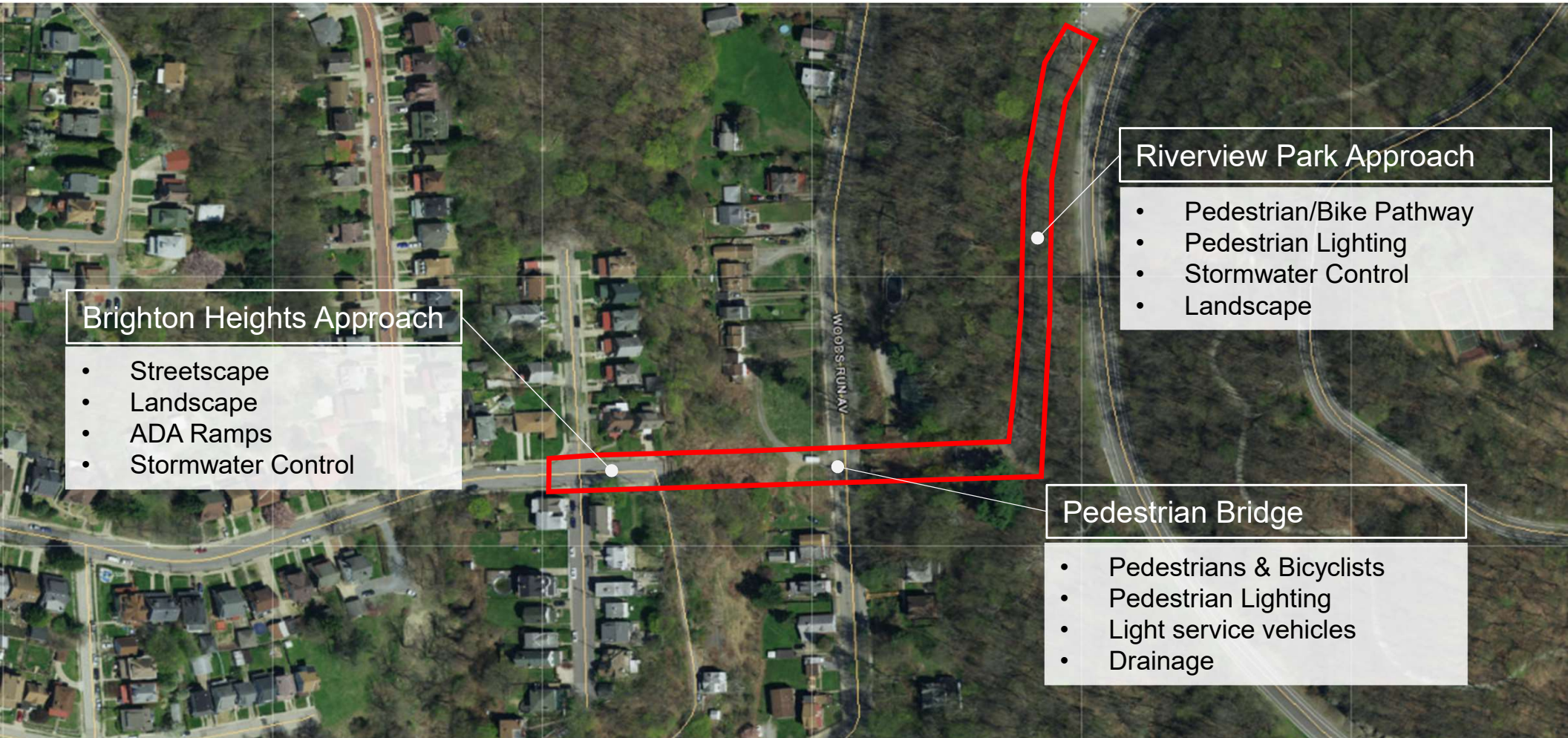
# AGENDA

- Introductions
- Project Overview
- Project Purpose and Need
- Design Process and Anticipated Timeline
- Existing Conditions
- Design Features
  - Approaches
  - Bridge
- Next Steps
- Questions and Feedback





# PROJECT OVERVIEW



## Brighton Heights Approach

- Streetscape
- Landscape
- ADA Ramps
- Stormwater Control

## Riverview Park Approach

- Pedestrian/Bike Pathway
- Pedestrian Lighting
- Stormwater Control
- Landscape

## Pedestrian Bridge

- Pedestrians & Bicyclists
- Pedestrian Lighting
- Light service vehicles
- Drainage

# PURPOSE AND NEED

## **Purpose -Overarching statement of what the project is intended to accomplish**

To reconnect pedestrians and bicyclists with Riverview Park

## **Needs- Identifies specific problems or deficiencies**

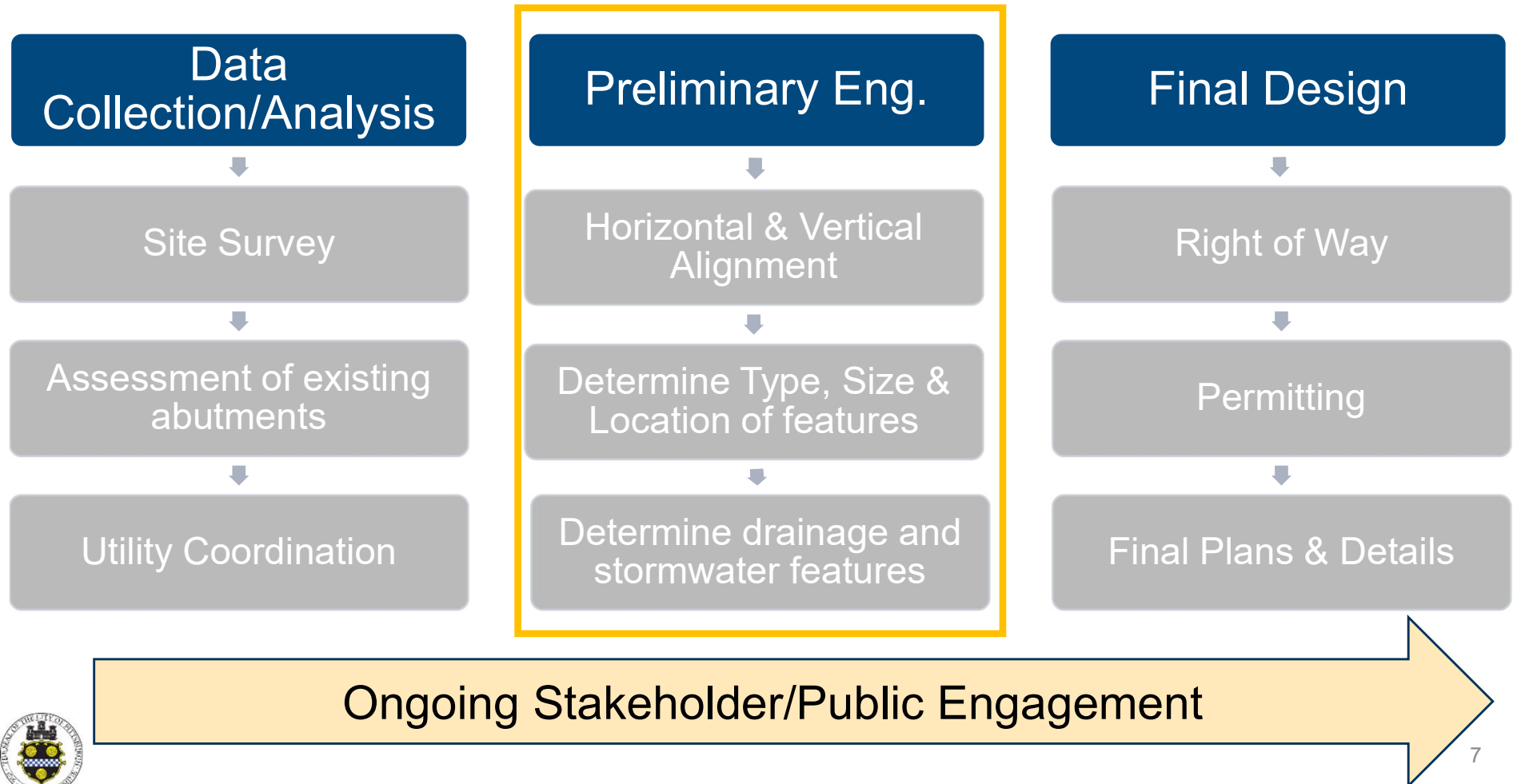
The existing Davis Avenue Bridge, which served as the most direct connection to Riverview Park, was demolished in 2009. With the demolition of the Davis Avenue bridge, the nearest connections to the park are over 1 mile away.

## **Goals – Secondary Objectives**

- Foster a sense of transition to Riverview Park
- Incorporate community driven art
- Improve accessibility
- Additional community driven considerations



# DESIGN PROCESS



# PROJECT TIMELINE

Activity	Anticipated Timing
Preliminary Engineering	Summer 2021- Spring 2022
Final Design	Spring 2022- Fall 2022
Construction	Starting Spring 2023







## **EXISTING CONDITIONS**



# EXISTING CONDITIONS-

## Davis Avenue Connection





# EXISTING CONDITIONS-

## Riverview Drive Connection





# PARK FEATURES

## Park Gateway, Signage & Wayfinding Elements





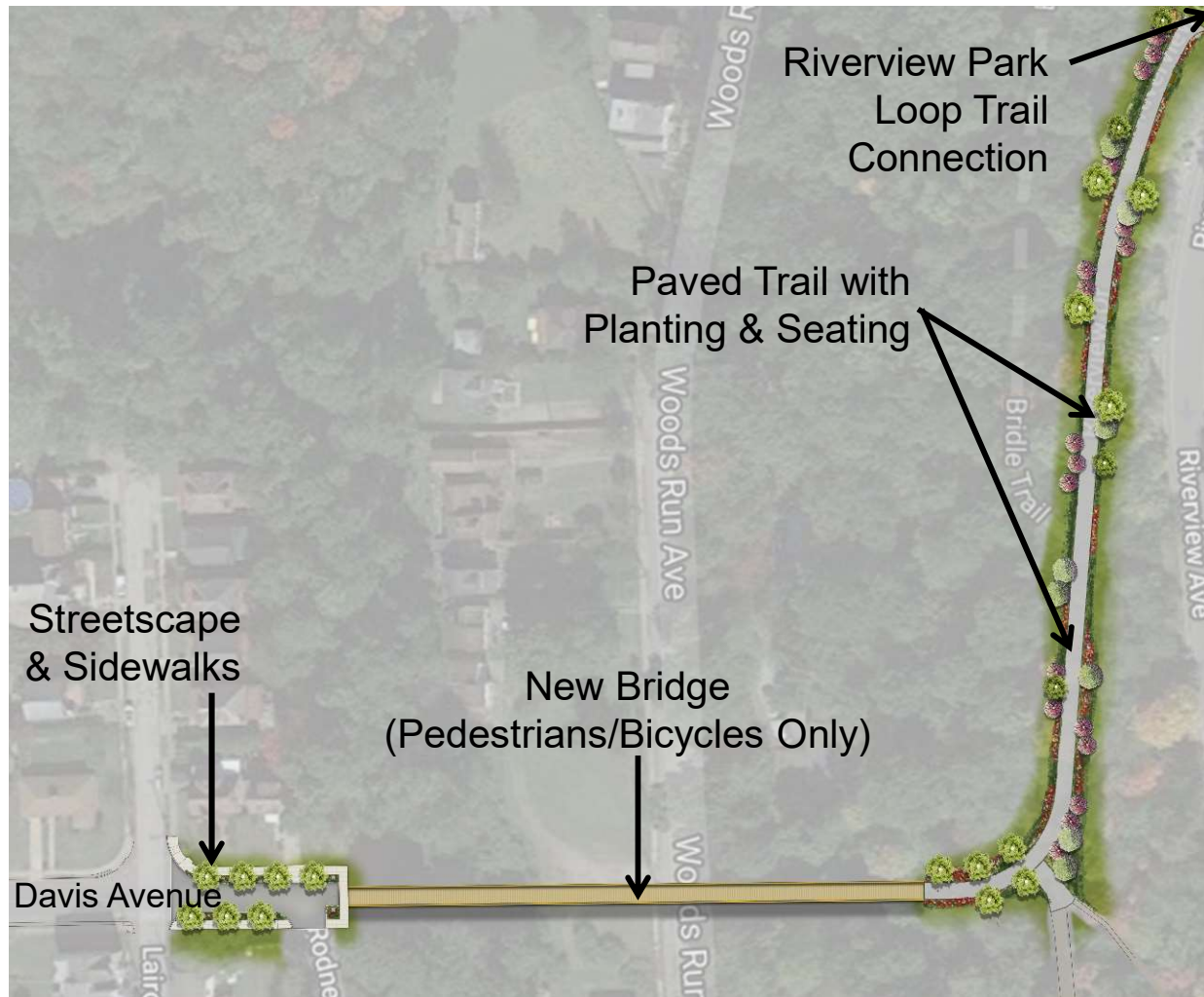


## **DESIGN FEATURES- APPROACHES**



# DESIGN FEATURES- APPROACHES

## Overall Plan



# DESIGN FEATURES- APPROACHES

## Davis Avenue Connection



### LEGEND:

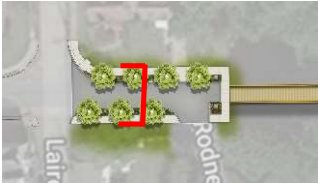
- A. Sidewalk & ADA Ramp
- B. Curb bump-out with planting (narrows road width)
- C. Street Trees

- D. Park gateway element
- E. Bollard to restrict vehicular access
- F. Proposed bridge- pedestrian & bicycle access only
- G. Riverview Park trail connection

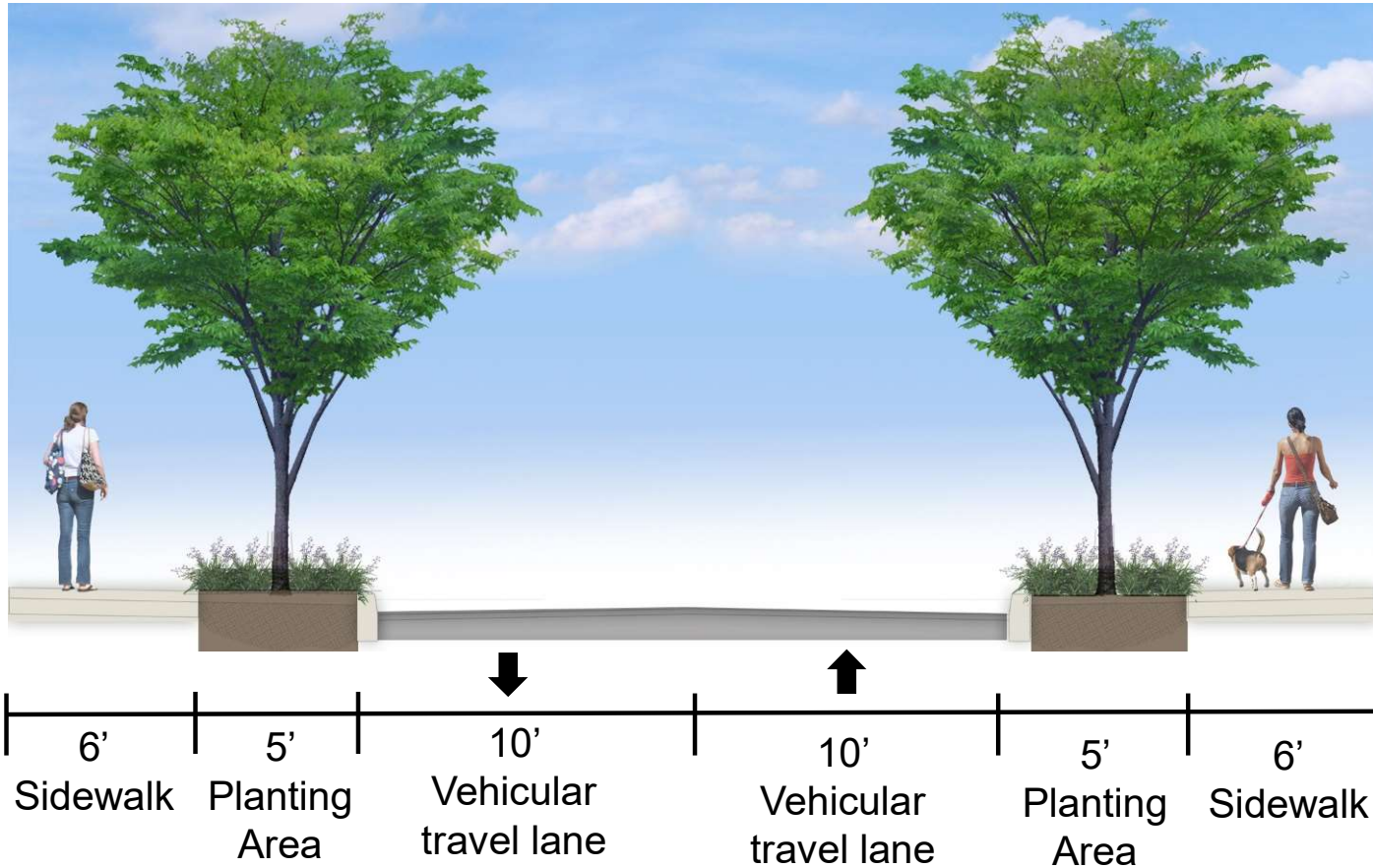


# DESIGN FEATURES- APPROACHES

## Typical Davis Avenue Streetscape Section



Key Plan



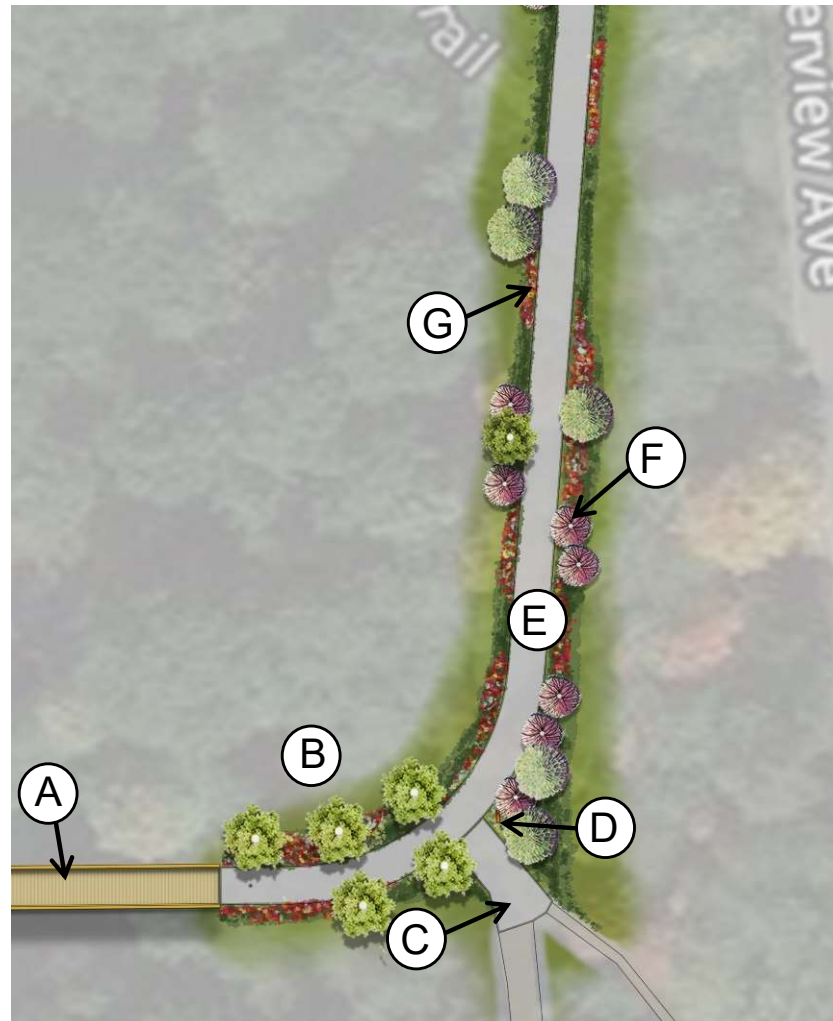


# DESIGN FEATURES- APPROACHES

## Riverview Park Connection

### LEGEND:

- A. Proposed bridge- pedestrian & bicycle access only
- B. Shade Trees
- C. Trail connection (to Violet Lane Trail)
- D. Park Map/Sign
- E. Paved trail connection to Riverview Park Loop
- F. Ornamental Trees
- G. Understory Planting- Native/Adapted grasses, shrubs & perennials



Key Plan 

# DESIGN FEATURES- APPROACHES

## Riverview Park Connection

### LEGEND:

- A. Paved trail connection to Riverview Park Loop
- B. Ornamental Trees
- C. Bench Seating
- D. Shade Tree
- E. Understory Planting- Native/Adapted grasses, shrubs & perennials
- F. Park Map/Sign



Key Plan

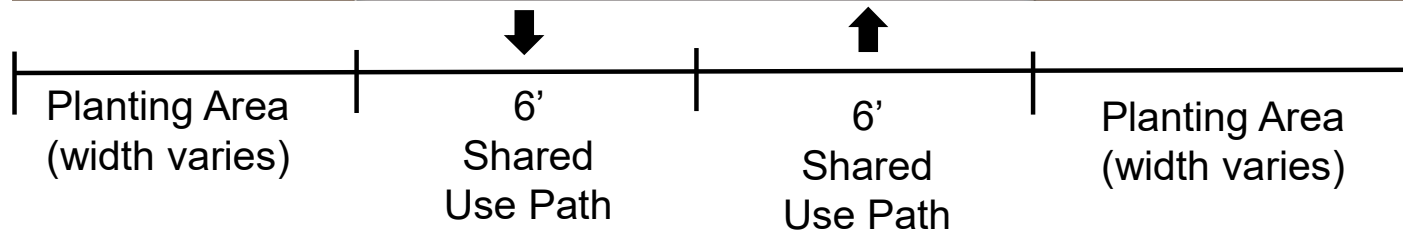


# DESIGN FEATURES- APPROACHES

## Typical Riverview Park Trail Section



Key Plan

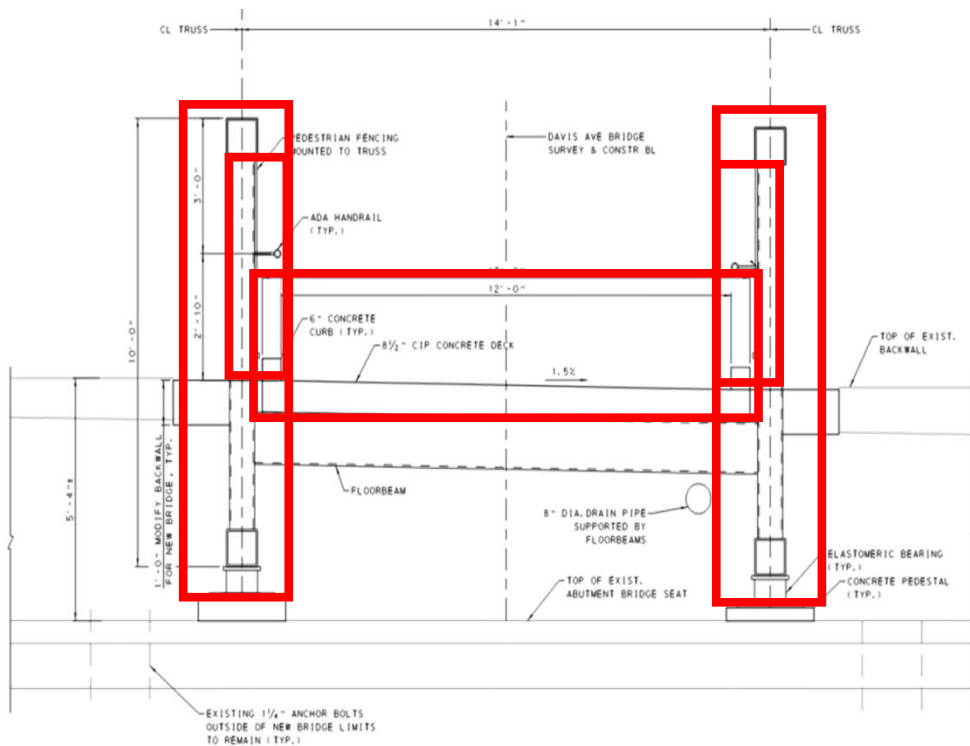




## **DESIGN FEATURES- BRIDGE**







### Features of the Proposed Bridge:

- 12 ft wide pathway provides multiple layout options
- Steel Truss Elements (various finish options)
- Pedestrian lighting (no decorative lighting)
- Pedestrian lights set into vertical rail elements
- Built for light service vehicles







## Finish Options

Painted



Galvanized



Weathering





## **NEXT STEPS AND Q&A**





# NEXT STEPS

## **Preliminary Design:**

- Collect community input, incorporate into design process
- Continue coordination with utilities
- Finalize preliminary design (approach work, drainage, structure)

## **Final Design:**

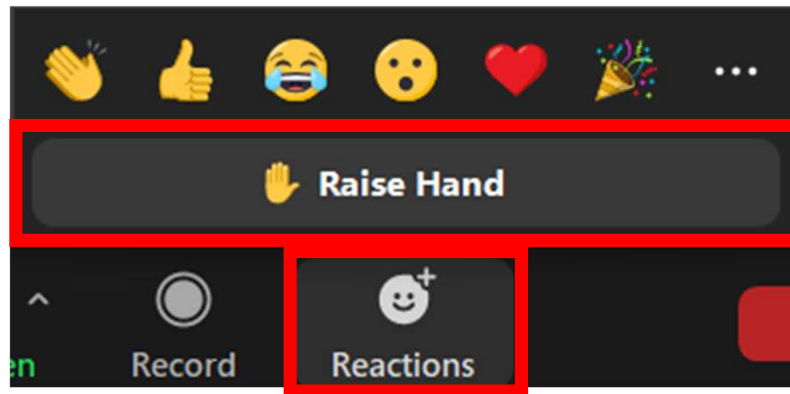
- Final Design Community Meeting
- Finalize design plans, details, specifications and estimate
- Advertise to contractors and select a bid
- Pre-Construction announcement



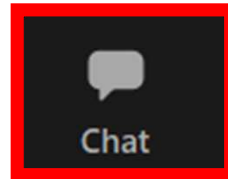


# Q&A AND FEEDBACK

- Click the “Raise Hand” button if you’d like to ask a question or provide a comment:



- Type your question into Chat:



- Email your question or comment: [rwhittington@hntb.com](mailto:rwhittington@hntb.com)



# CONTACT INFORMATION

Zachary Workman, PE

412-719-4338

[zachary.workman@pittsburghpa.gov](mailto:zachary.workman@pittsburghpa.gov)

Ryan Whittington, PE

610-290-5142

[rwhittington@hntb.com](mailto:rwhittington@hntb.com)

