

# **GREATER HILL DISTRICT** **MASTER PLAN**

## **Mobility Action Team Meeting #1**

---

**December 14, 2021**

# Mobility Chapter Staff Introductions: Who's Listening?



Thomas Scharff  
(City Planning)



Steven Auterman  
(Department of  
Mobility &  
Infrastructure)



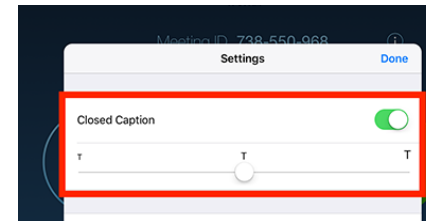
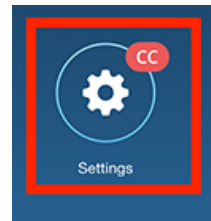
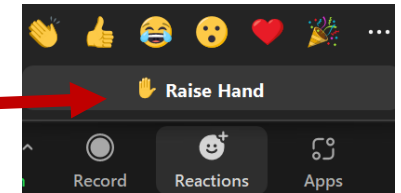
Moira Egler  
(Port Authority)

# TONIGHT'S AGENDA

1. Introductions
2. Background: Greater Hill District Master Plan, Role of the Action Teams, Drafting the Mobility Chapter
3. Overview of Transportation Safety, Traffic Calming, Corridor Improvements, and Pedestrian Connectivity in the Greater Hill District
4. Presentation of Proposed Mobility Projects for today's focus topics
5. Discussion: What do you like about the proposals? What would you change? Would you prioritize anything differently? What is missing?
6. Next Steps

# Zoom Housekeeping

- Chat function
- Opportunities for clarifying questions during presentations – Please “raise hand”  
(\*9 to raise hand on phone, \*6 to mute on phone)
- We’ll also have times set aside for open discussion
- Closed captioning live transcript:



# Participant Introductions

Please type in the Chat:

Your Name, Connection to the Hill District, and  
What motivated you to participate here tonight

# Updating and Adopting your Greater Hill District Master Plan

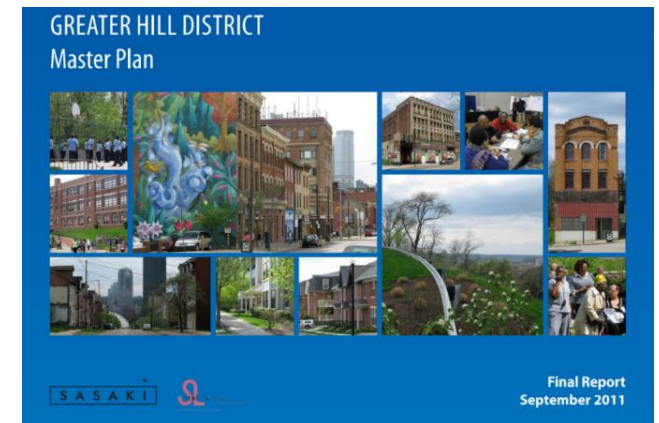
# Updating your Greater Hill District Master Plan

- **City's Neighborhood Plan Guide** is a framework for neighborhood plans and their adoption.
- **Adoption by the Planning Commission** strengthens plans as tools for implementing neighborhood goals.
- **Four main chapters** of a neighborhood plan: Community, Development, Infrastructure, and Mobility.
- This Action Team focuses on **Mobility**.



# Mobility Goals from your 2011 Greater Hill District Master Plan

- 1) **Improve transportation networks and services** to the city and within the Hill District
- 2) New infrastructure promoting **walkability, street accessibility** for people with mobility challenges, and **access to work, retail and social amenities**
- 3) Create a **well-planned parking strategy** that supports new development while minimizing negative impacts on residents





Improving  
Mobility:  
making it  
easier and  
safer to travel  
to and  
around the  
Hill District.



Improved mobility translates to easier, safer, and more accessible options to get where you need to go, whether that is work, school, shopping, appointments, recreation, meetings with friends/family, or more.





# Mobility: Key Topics

- Walking
- Bus / Transit
- Biking
- Accessible sidewalks, streets, routes
- Safety for pedestrians, bicyclists, and all modes
- Increasing transportation and commuting options
- Parking



# Mobility Action Team Meeting Topics

## **Meeting #1 (Dec 14<sup>th</sup>):**

- Transportation Safety
- Traffic Calming and Corridor Improvements
- Pedestrian Connectivity

## **Meeting #2 (Feb 1<sup>st</sup>):**

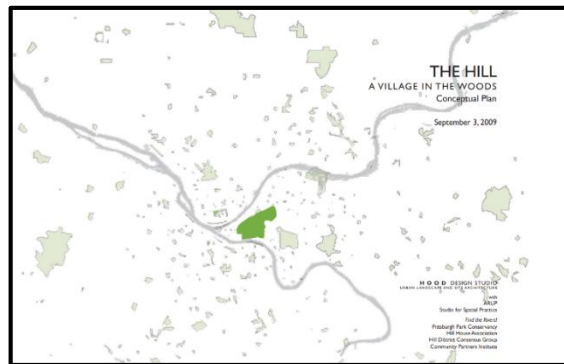
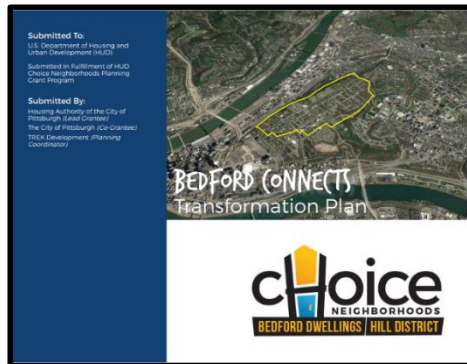
- Transit (bus service and stops)
- Bike Infrastructure
- Scooters, micro-mobility, and proposed trails

## **Meeting #3 (Mar 1<sup>st</sup>):**

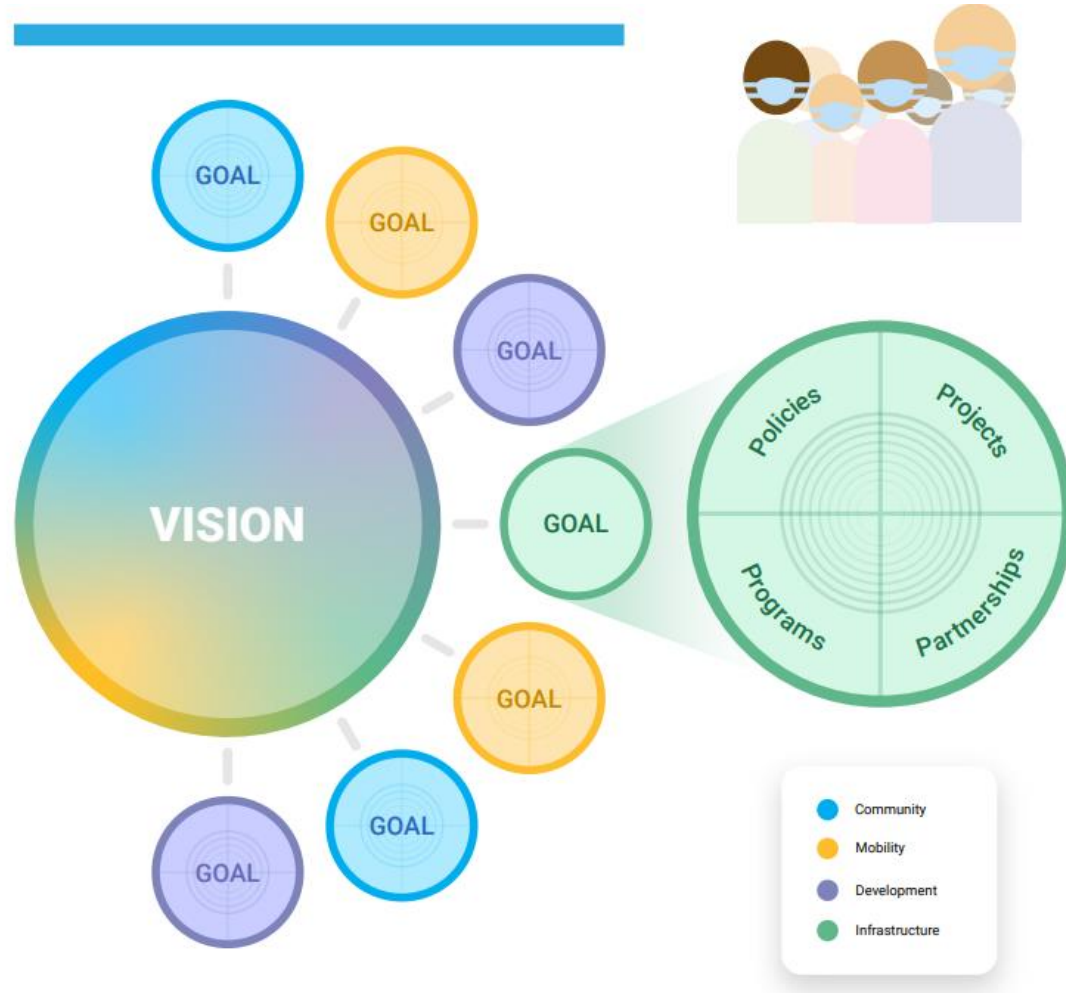
- Parking
- Transportation Demand Management (TDM) and increasing transportation and commuter choices

# Learning from Prior Plans & Studies

- The Hill: A Village in the Woods Conceptual Plan (2009)
- Centre Avenue Corridor Redevelopment & Design Plan (2015)
- Bedford Connects Transformation Plan (2018)
- The Bike(+) Master Plan (2020)
- NEXTransit (2021)
- PGH 2070 Mobility Vision Plan (2021)
- Others



# Mobility Chapter for the Updated Plan



- **Policies** set a preferred direction -- what must be done to achieve goals
- **Projects:** Discrete actions
- **Programs:** A set of activities to realize a particular long-term goal
- **Partnerships:** Commitments by organizations to work together to advance an outcome

# Mobility Chapter Cont'd

Proposed projects, programs, and partnerships represent a **shared “to do” list** for community organizations and public agencies.

These identify **what** projects they should pursue in a particular community, **how** the project should be scoped, **who** they should work with, and how much **funding** they will need to complete it.

As we work together to refine proposals, we should think about two aspects of our proposals: **Importance to the community, and difficulty.**

*Note: “Community” includes all the stakeholders, e.g. everyone who has ties to the place and/or who lives, works, or plays in the Greater Hill District.*



# **Role of the Action Team: Review and Draft Mobility Proposals**

Meet regularly by Zoom to review and improve proposed policies, projects, programs, and partnerships. Draft new proposals as needed.

Engage with the broader community to inform our work and share our ideas.

Present our ideas to the Steering Committee to get their input and understand where multiple Action Teams might work together on a topic.

Refine proposals based on all input. Finalize implementation matrix.



# Mobility Action Team Timeline

---

**Tuesday, December 14<sup>th</sup>, 2021, 6:00-8:00pm via Zoom**

**Tuesday, February 1<sup>st</sup>, 2022, in the evening via Zoom**

**Tuesday, March 1<sup>st</sup>, 2022, in the evening via Zoom**



# Expectations as Action Team Members

Action Team members are expected to participate in good faith. The following expectations apply to all members:

1. Prepare for and attend all meetings to fullest extent possible
2. Participate fully and honestly, commenting constructively
3. Treat fellow members with respect, particularly when there are differences of opinion
4. Allow others to say what they believe is true without fear of reprisal
5. Allow only one person to talk at a time
6. Only represent your views when speaking with others about the planning process

# Recent Outreach

- Spring 2021: Presentation at Hill CDC Public Meeting, Pop-Up events (*Family Dollar and Thelma Lovette YMCA*)
- Summer 2021: Pop-Up Events (*Grandma B's Diner, Big Tom's Barber Shop, The Hill House, Ammon Pool*)
- Engage PGH Website & Survey: <https://engage.pittsburghpa.gov/ghdmp>



# What Staff Heard from the Community re: Safety, Traffic Calming, and Connectivity

- **Sidewalks** are missing or in poor condition – challenges to traverse, including when walking with a stroller
- Need **more mobility options** for older residents and residents with disabilities
- **Speeding cars** is a problem; traffic calming is needed on Bedford Ave
- Desire for **corridor improvements** for popular Jitney pick-up and drop-off locations
- **Streetscape beautification and repair** on Centre Avenue is important as the community's core business district
- Closure of **steps** (e.g. Brackenridge) and overgrown grass in some areas block access

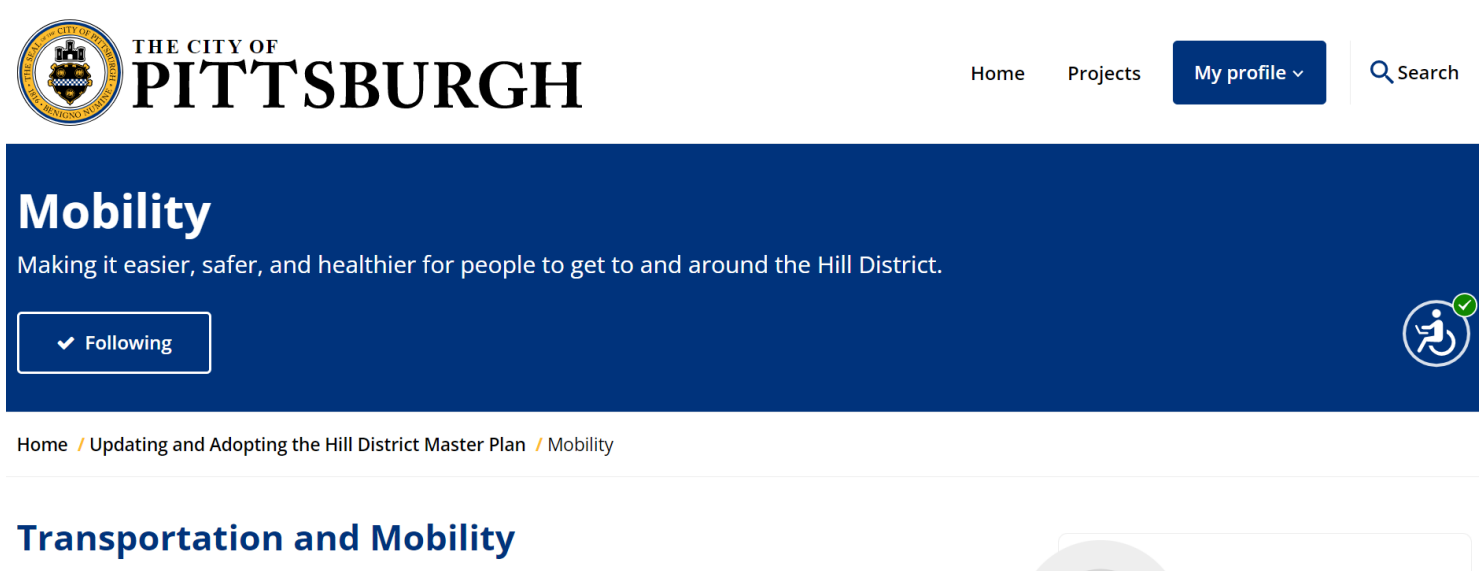


# Hill District Transportation & Mobility Study

- Study of Existing Conditions (by Kittelson & Associates, being finalized shortly)
- The study will provide a **baseline of key information and recommendations.**
- The Study Analyzes:
  - Previous plans' recommendations for mobility improvement projects
  - Transportation network: roadways, transit, pedestrian and bicycle connections
  - Travel patterns and commuting
  - Transportation safety: sites with dangerous roadway or pedestrian conditions
  - Parking

# Additional Ongoing Engagement

- In-person engagement in January/February
- In-person canvassing and doorknob flyers to spread the word
- Engage PGH Feedback Portal -  
<https://engage.pittsburghpa.gov/ghdmp/mobility>





# Using Your EngagePGH Page

[engage.pittsburghpa.gov/ghdmp/mobility](https://engage.pittsburghpa.gov/ghdmp/mobility)

## ACTION TEAM MEETING 1

Open

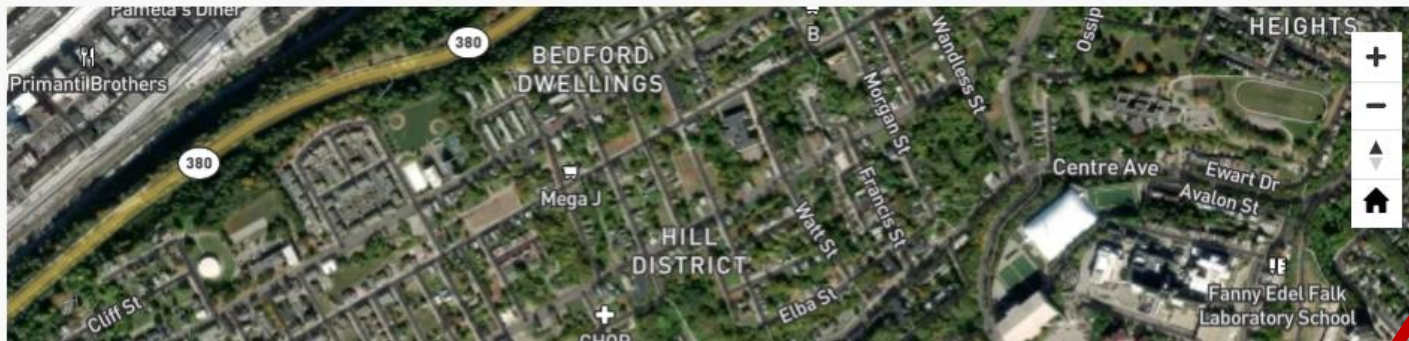
### Can you provide us with areas with Transportation Connection issues?

Where are there transportation connection issues for getting where you need to go? Are there traffic calming or transportation safety issues or needs?

0 contributions so far

Share your thoughts; add a marker to the map

Enter an address



Sign up so you receive meeting invites and updates

## Join the Mobility Action Team

Sign Up Here!

## Upcoming Meetings

### Hill District Master Plan

Today ← → Tuesday, December 14 Print Week Month

6:00pm	<b>Mobility Action Team Meeting</b>
When	Tue, December 14, 6pm – 8pm
Description	Zoom Link

Events shown in time zone: Eastern Time - New York + Google Calendar

Track Upcoming Meetings

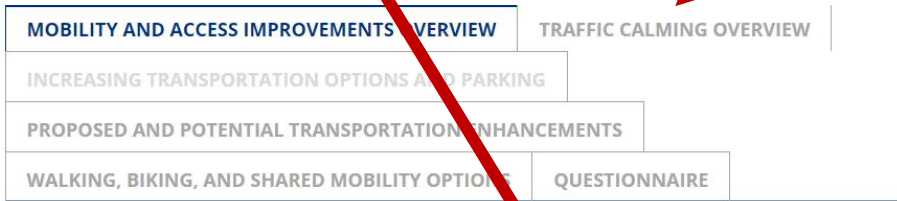
# Using Your EngagePGH Page

## [engage.pittsburghpa.gov/ghdmp/mobility](https://engage.pittsburghpa.gov/ghdmp/mobility)

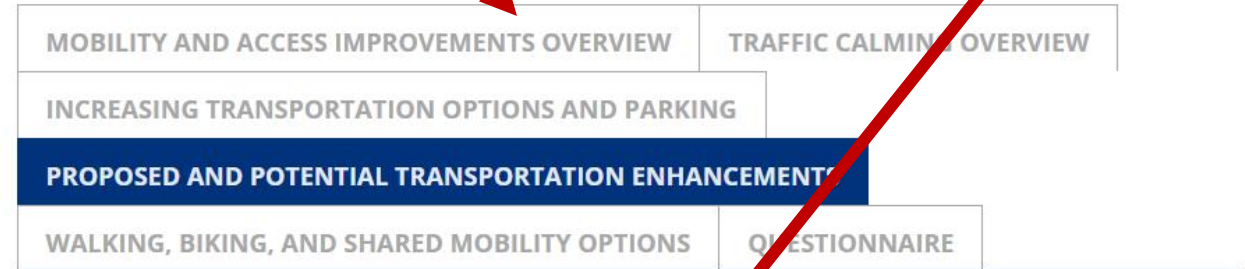
Review Overview of Proposed Improvements

Review Proposals of the Transportation & Mobility Study by switching between tabs

Review Detailed Site Map with Proposed Mobility Enhancements



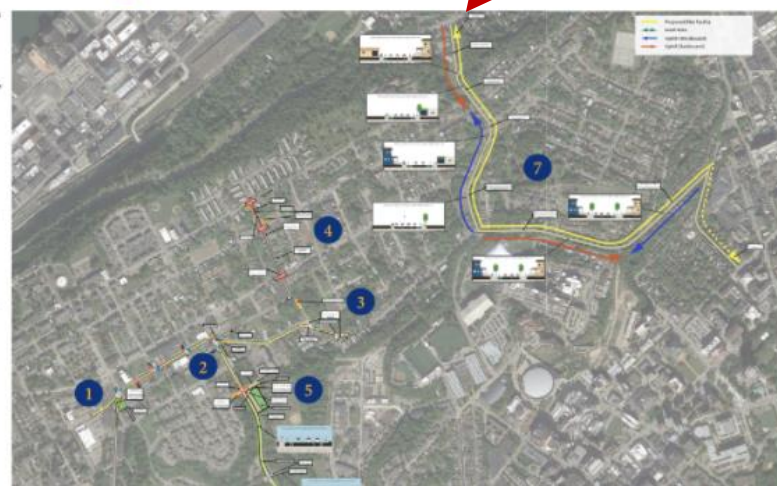
## Greater Hill District Master Plan Update Transportation and Access



## Greater Hill District Master Plan Update Transportation and Access

## Transportation Enhancement Concept Plans

- Centre Avenue/Dwight Street/Dwight Street Intersection Improvement**
  - Redesign Dwight Street to connect to the Centre Avenue/Dwight Street intersection.
  - Remove access from Dwight Street at Centre Avenue.
  - Coordinate with police and property owners to create access to the police station via Rose Street.
  - Provide plaza space with micro-mobility hub and nearby bike station.
  - Plant high visibility crosswalks on all legs of the intersection.
- Centre Avenue/Kirkpatrick Street Intersection Improvement**
  - Close access from Mahon Street to Centre Avenue.
  - Provide a plaza with micro-mobility hub and nearby bike station.
  - Redesign crosswalks and add curb extensions.
- Centre Avenue/Reed Street/Chauncey Street Steps Intersection Improvement**
  - Turn up Reed Street with Centre Avenue.
  - Add high visibility crosswalks and curb extensions at Centre Avenue and Reed Street.
  - Redesign access street north at Centre Avenue and Reed Street to provide plaza space with micro-mobility and bike station.
  - Provide sidewalks along Centre Avenue and Reed Street.
- Chauncey Street Pedestrian Connector**
  - Use bollards to prevent through-traffic on Chauncey Street between Webster and Bedford avenues.
  - Provide 'No U-turn' signs.
  - Add shared lane markings to increase vehicular awareness of people biking.
  - Enhance pedestrian crossings along Chauncey.



- Kennett Playground Access and Safety Improvements**
  - Add high visibility crosswalks and curb extensions.
  - Provide sidewalks on Kirkpatrick and Reed streets, with connections to the Kennett Playground.
  - Redesign park entrances, remove surface parking lot, and provide plaza space with micro-mobility and nearby bike station.
  - Add new pedestrian connection between Kirkpatrick Street and Skyline Terrace.
  - Strip parking lane on north side of Reed Street to provide street parking for the park at Kirkpatrick Street.
- Kirkpatrick Street Bicycle Connection**
  - Redesign Kirkpatrick Street to provide a bicycle connection between Reed Street and designed 15th Avenue.
  - Northbound separated bike lane from 15th Avenue to Reed Street.
  - Southbound separated bike lane between Casson and Reed streets.
- Centre and Harrison Avenues Bike Connection**
  - Dedicated bicycle facility that connects the Upper Hill to South Hill.
  - Provide facility provisions giving the most protection to bicyclists heading uphill.
  - Bicycle facilities vary based on available road width, existing street parking, and slope.
  - Provide a dedicated connection from the Upper Hill to South Hill.



# Today's Focus:

Transportation Safety  
+  
Pedestrian Connectivity  
+  
Traffic Calming  
+  
Corridor Improvements

# Invitation to Share in the Chat

---

Is there an area where as a pedestrian you've found the travel routes comfortable and safe?

Is there a location where as a pedestrian you've found the travel route is uncomfortable, hazardous, confusing, or inaccessible?

# Safety & Active Transportation Summary Map



# Example Tools for Safety, Connectivity and Traffic Calming



Public Art



Curb Extensions



Sidewalk Improvements &  
Wide Sidewalks (ex: Bedford & Devilliers)



Speed Humps & Speed Tables



# Reviewing Recommendations/Proposals

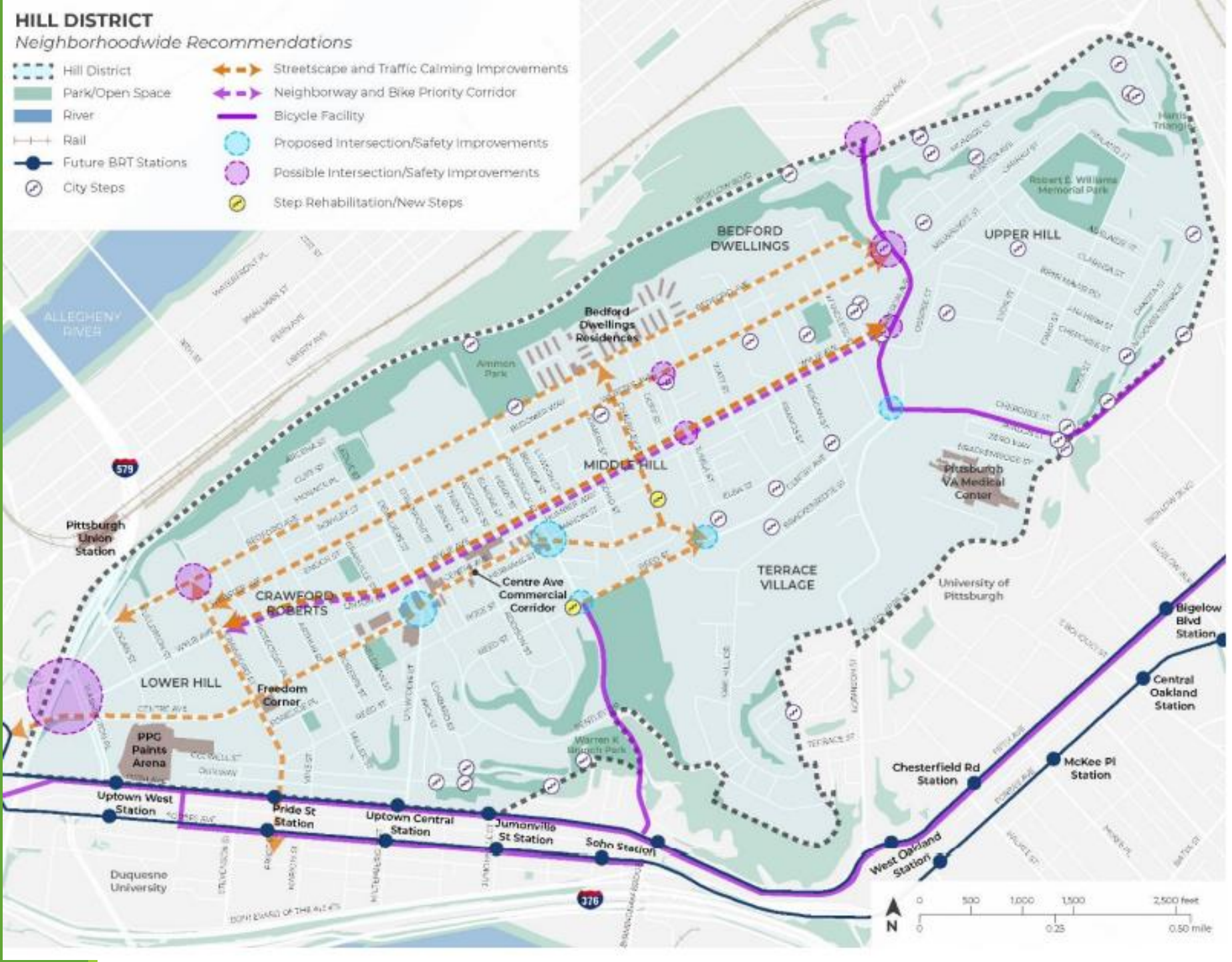
---

- What do you like?
- What would you change?
- What would you prioritize differently?
- What is missing?

# Proposed Projects for Today's Topics

- Centre Ave Streetscape – Corridor Improvements, Safety, Traffic Calming, Connectivity (*Includes Intersections' Reconstruction*)
- Kennard Playground Access -- Pedestrian Connectivity and Safety
- Chauncey Street Pedestrian Connector – Pedestrian Connectivity, Traffic Calming, and Plaza space
- Neighborway Improvements along Wylie, Webster, Bedford, Reed, Crawford – Traffic Calming, Corridor Improvements

# Overview Map of Project Proposals



# How Proposals were Prioritized

ID. Project Name (Type)	Project Extents	IMPROVE SAFETY AND CONNECTIVITY OF TRANSPORTATION NETWORKS TO THE CITY AND WITHIN THE HILL DISTRICT				NEW INFRASTRUCTURE SHOULD PROMOTE WALKABILITY, STREET ACCESSIBILITY FOR PEOPLE WITH MOBILITY CHALLENGES, AND ACCESS TO WORK, RETAIL AND SOCIAL AMENITIES			CREATE A WELL-PLANNED PARKING AND TRANSPORTATION STRATEGY THAT SUPPORTS NEW DEVELOPMENT WHILE MINIMIZING NEGATIVE IMPACTS ON RESIDENTS			Priority Level
		Crash location	Community-identified concerns	Bicycle connectivity	Transit connectivity	Connects to key destination	Connects to Centre Avenue	Pedestrian connectivity	Provide additional options for curbside uses on Centre Avenue	Increases residential parking availability and access	Promotes the use of alternative modes of transportation for trips	
		Safety enhancement within 200 feet of where a crash took place	Identified as a safety concern through public input	Provides a new bicycle connection	Within 500 feet of an existing or proposed bus stop	Within 1/8 mi of a key destination (e.g., park, school)	Increases access to/across Centre Avenue	Fills a missing pedestrian connection	Provides a mix of curbside types that promotes safe operations	Provides additional on-street parking or creates safer corridors to park	Provides access to multimodal options	
1. Centre Avenue Streetscape (Devilliers Street to Reed Street)		●	●	○	●	●	●	●	●	●	●	High

Proposals are prioritized as high, medium or low based on how well they met the 2011 Master Plan mobility goals



# Implementation Considerations

## Potential Cost (approximations)

- Low: \$ (Less than \$100,000)
- Moderately Low: \$\$ (\$100,000 to \$250,000)
- Moderately High: \$\$\$ (\$250,000 to \$1 Million)
- Highest: \$\$\$\$ (\$1 Million +)

## Timeframe (approximations)

- Short-term: <3 years
- Medium-term 3-5 years
- Long-term 5+ years
- Dept. of Mobility & Infrastructure (DOMI) is nearly always the primary implementer of the projects proposed under today's topics.
- High priority proposals may not happen right away, depending on feasibility.

# Design Considerations & Action Team Overlap

**With Mobility Improvements, explore points of overlap with other Action Team proposals, for example, by considering:**

- Paving typologies from different eras of Hill District history, at select locations
- Feasibility of wide sidewalks at key locations
- Consider proposed Cultural Preservation Loop locations, and crossroads areas punctuating the Loop, such as Centre Ave at Kirkpatrick Street as historically a center of transportation and infrastructure
- Consider areas of focus for place-based economic development and site activation
- Incorporation of public art (long-term and/or short-term activations)
- Street trees as part of Corridor Improvements
- *Note: ideas above are tentative and for further exploration throughout process*

# Overview of Project Proposals by Priority Level







## LEGEND

- Curb Extensions
- Plaza/Open Space
- City Steps
- Micromobility Hub
- Healthy Ride Bikeshare Station

- Bus Stop Loading Area
- Sidewalk
- Crosswalk
- Bicycle Lane
- Centerline Striping
- High Priority Project
- Medium Priority Project
- Low/Lower Term Priority Project

# Centre Ave Proposed Improvements: Overview

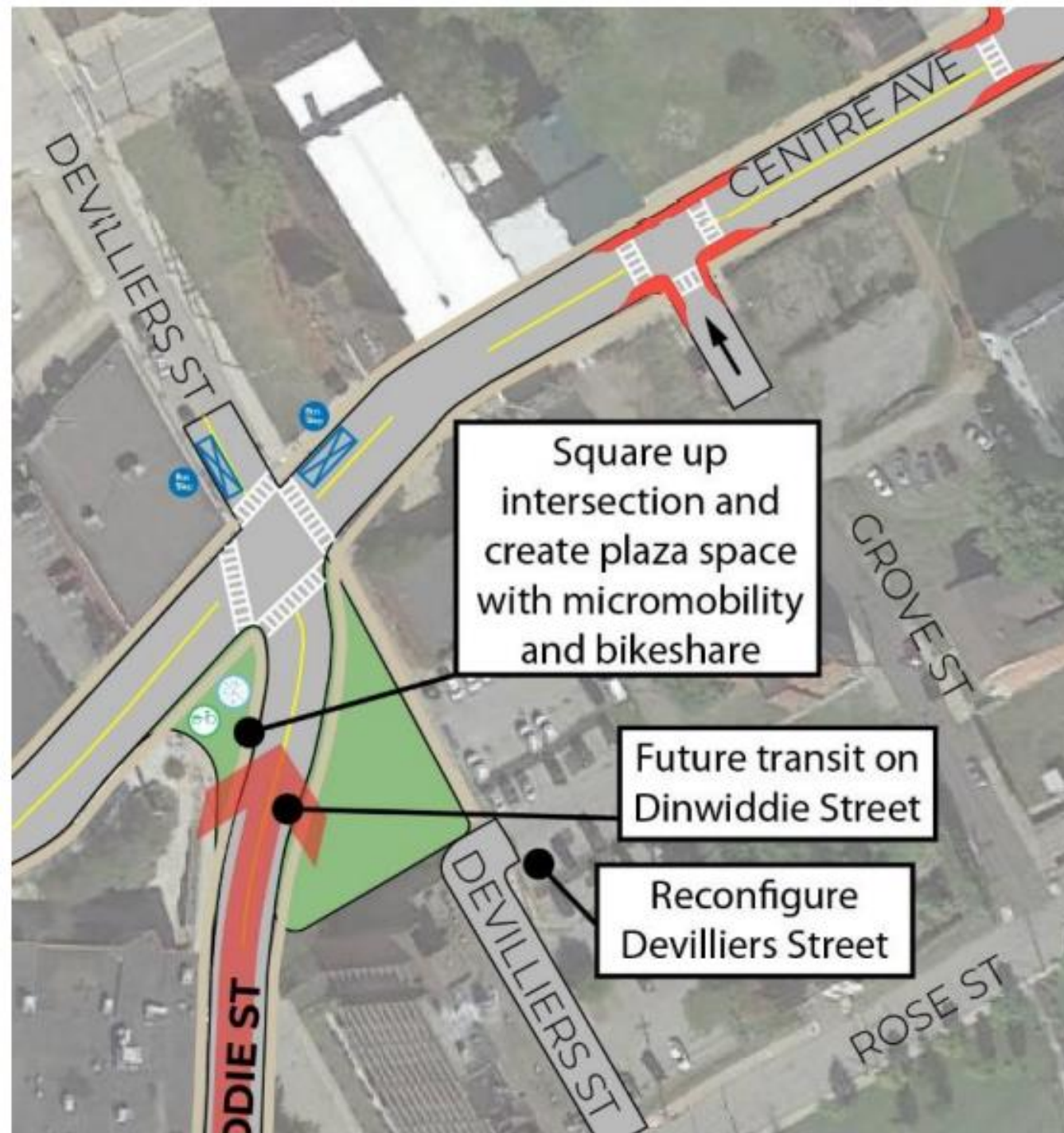
High Priority  
\$\$\$\$  
Long-Term

Sub-components:  
General Traffic  
Calming, and three  
intersection  
reconstructions



# Centre Ave at Dinwiddie and Devilliers Intersection (sub-component of Centre Ave)

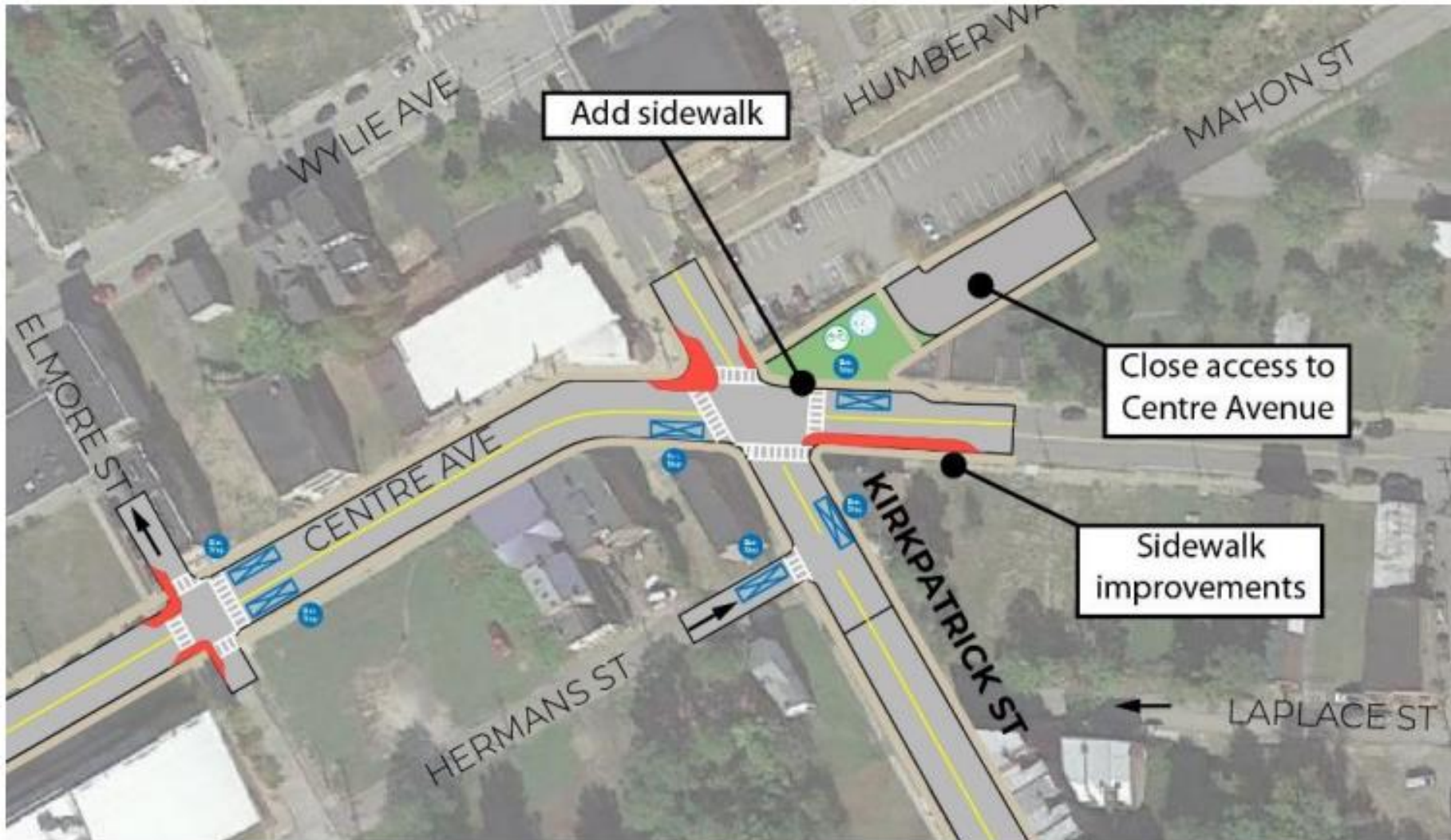
Low Priority  
\$\$\$  
Medium-Term



## LEGEND

-  Curb Extensions
-  Plaza/Open Space
-  City Steps
-  Micromobility Hub
-  Healthy Ride Bikeshare Station
-  Bus Stop
-  Bus Stop Loading Area
-  Sidewalk
-  Crosswalk

## Centre Ave at Kirkpatrick Street (sub-component of Centre Ave)



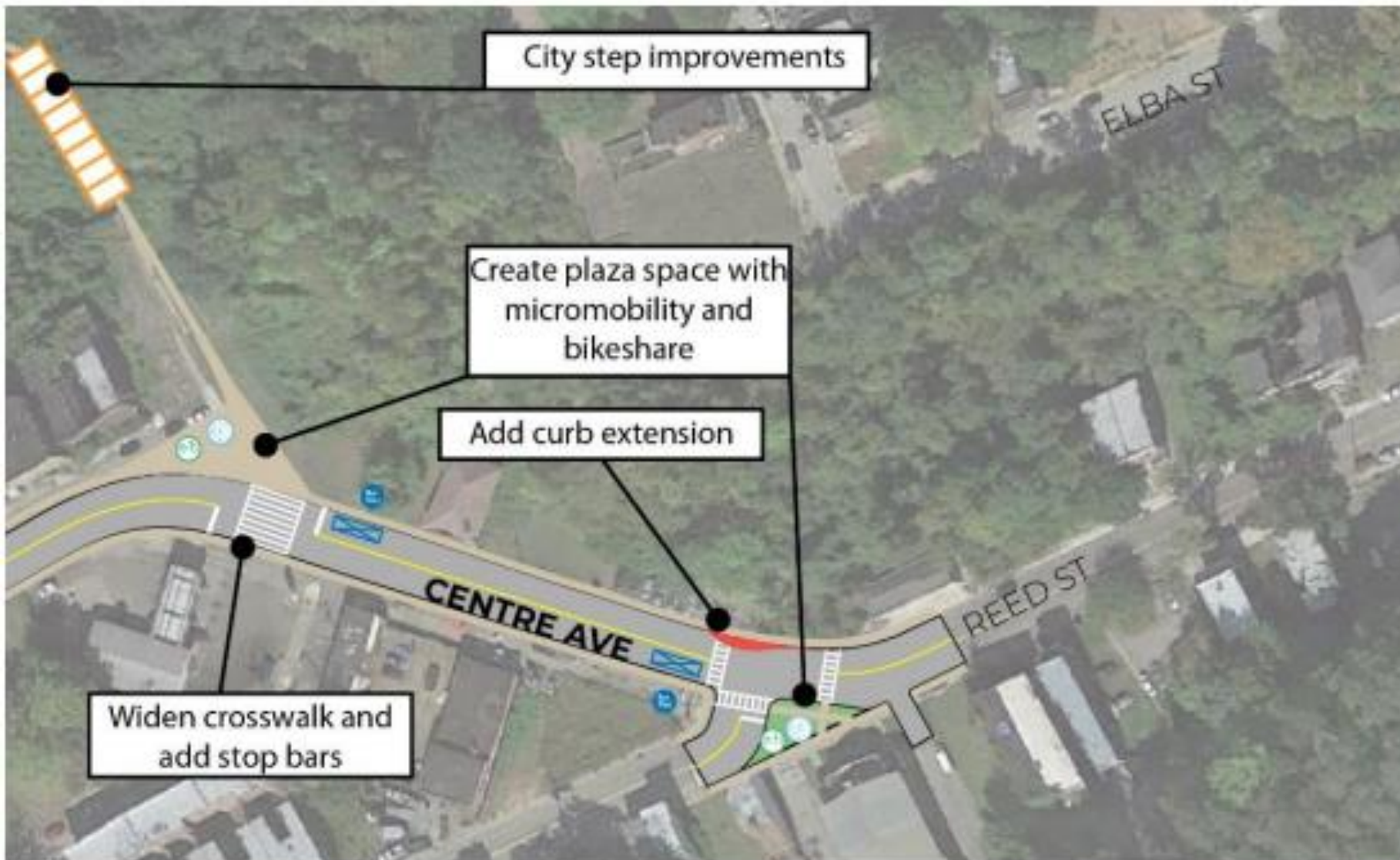
Medium Priority  
\$\$\$  
Medium-Term

### LEGEND

-  Curb Extensions
-  Plaza/Open Space
-  City Steps
-  Micromobility Hub
-  Healthy Ride Bikeshare Station
-  Bus Stop
-  Bus Stop Loading Area
-  Sidewalk
-  Crosswalk



## Centre Ave at Reed Street (sub-component of Centre Ave)

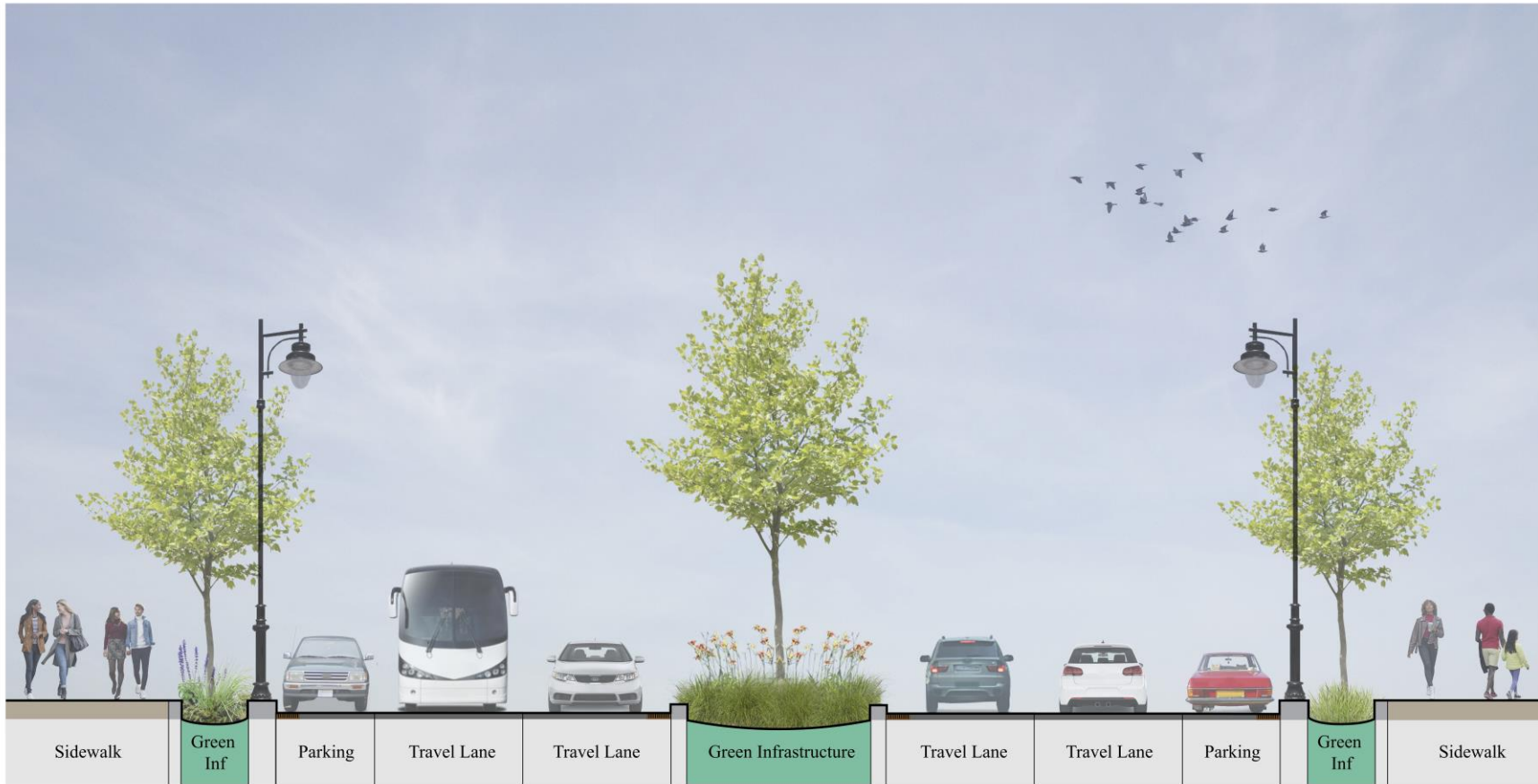


Low Priority  
\$\$\$  
Short-Term

### LEGEND

-  Curb Extensions
-  Plaza/Open Space
-  City Steps
-  Micromobility Hub
-  Healthy Ride Bikeshare Station
-  Bus Stop
-  Bus Stop Loading Area
-  Sidewalk
-  Crosswalk

## Centre Ave Traffic Calming & Corridor Improvements (Dinwiddie to Downtown)



High Priority  
\$\$  
Medium-Term



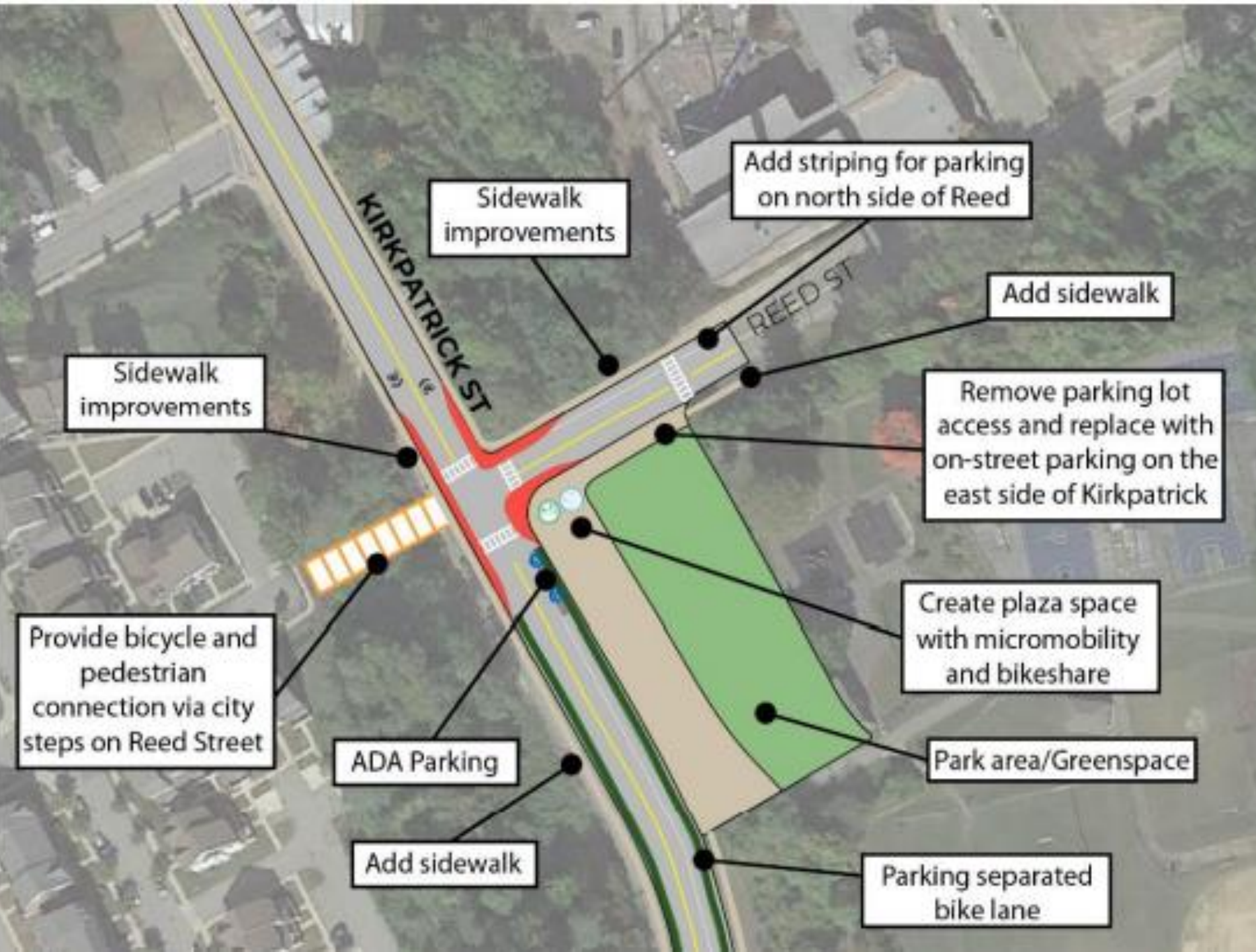
# Kennard Park Access (Kirkpatrick & Reed St.)

Low Priority  
\$\$\$\$  
Medium-Term

Sub-components (Steps,  
Intersection Improvement)  
vary in cost, timeframe.

## LEGEND

-  Curb Extensions
-  Plaza/Open Space
-  City Steps
-  Micromobility Hub
-  Healthy Ride Bikeshare Station
-  Bus Stop
-  Bus Stop Loading Area
-  Sidewalk
-  Crosswalk
-  Bicycle Lane
-  Centerline Striping

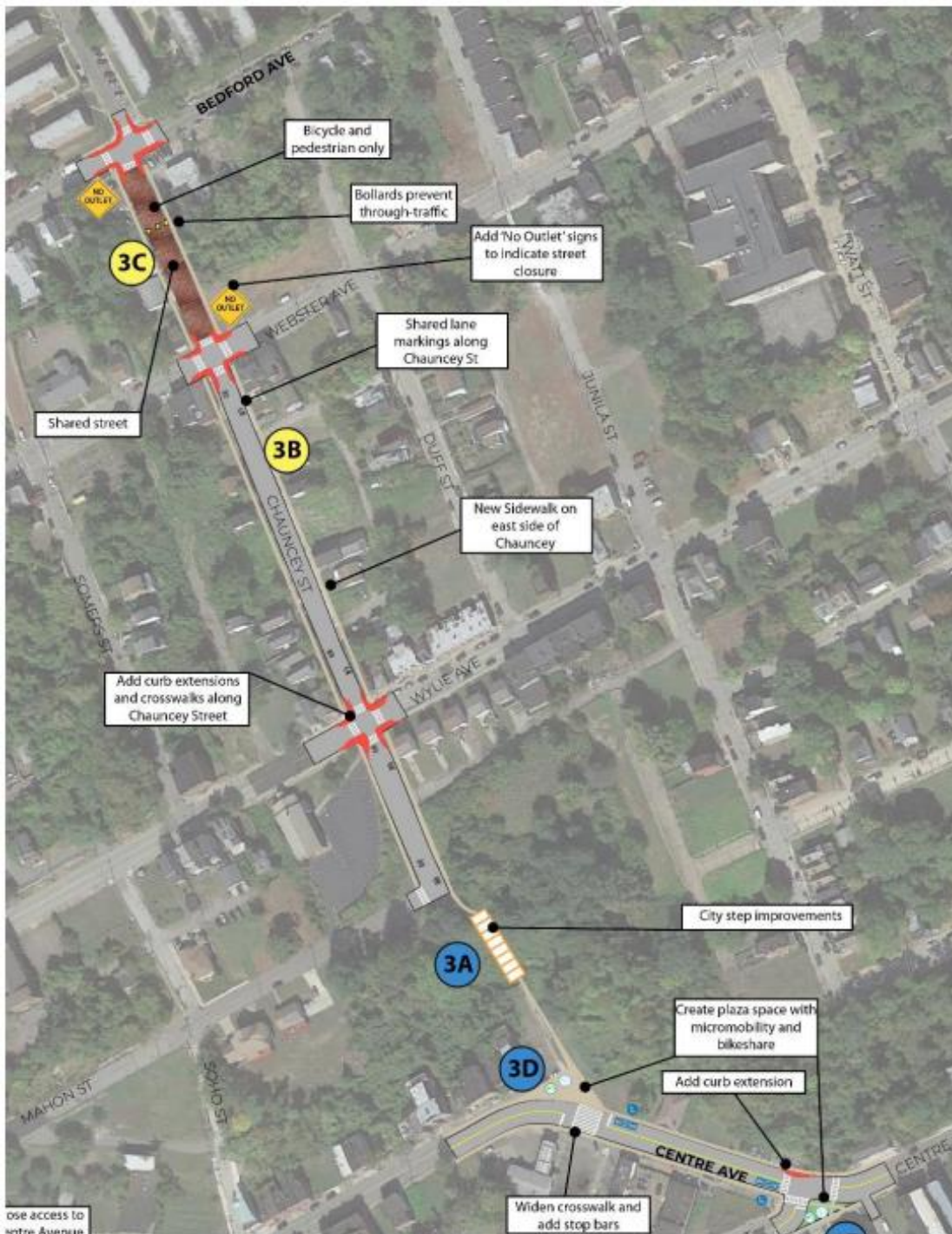




# Chauncey Street Pedestrian Connector

High Priority  
\$\$\$\$  
Medium-Term

Sub-components (Steps,  
Traffic Calming & Sidewalk,  
Shared Street, Plaza) vary  
in priority, cost, time-frame

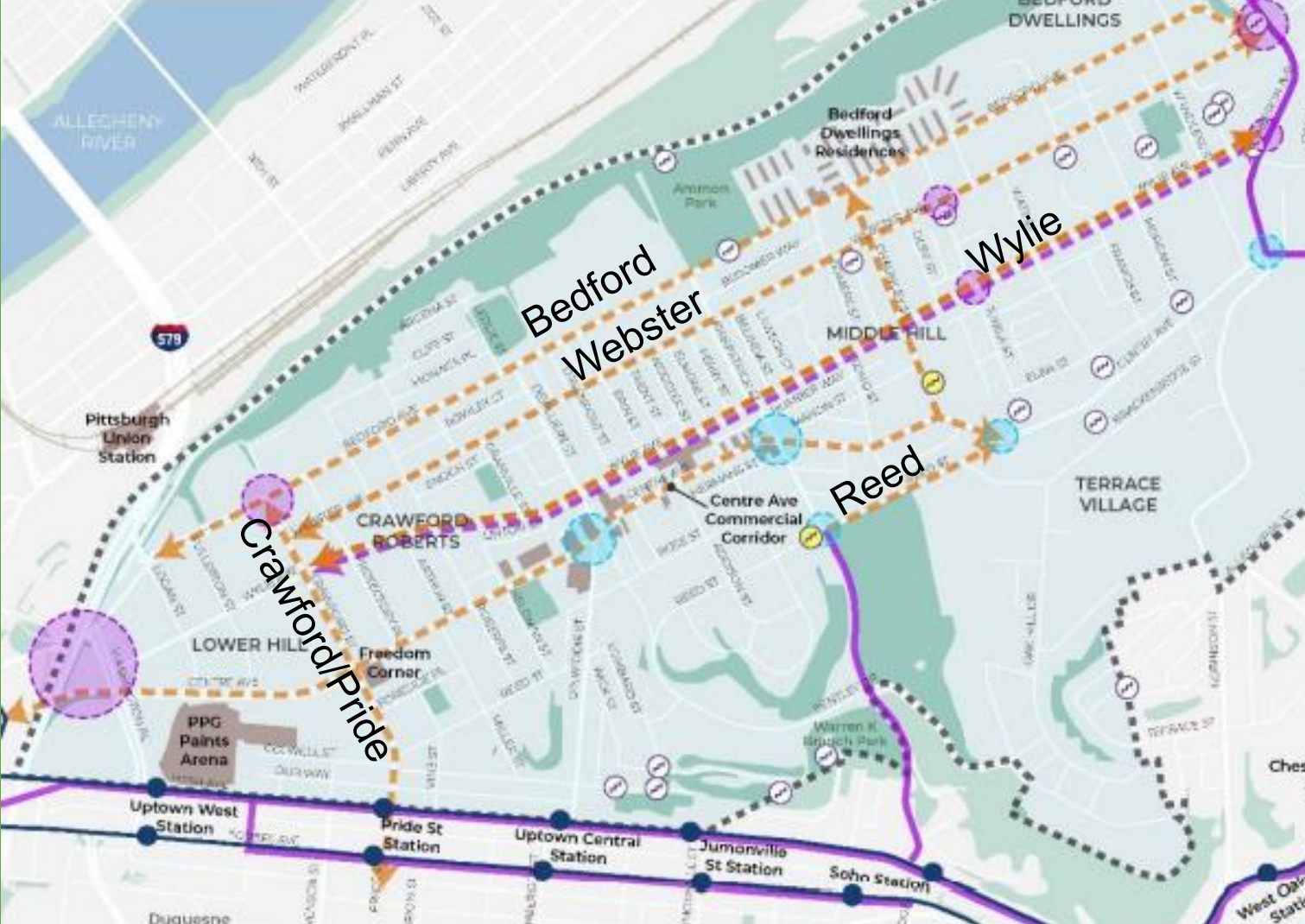


## LEGEND

- Curb Extensions
- Plaza/Open Space
- City Steps
- Micromobility Hub
- Healthy Ride Bikeshare Station
- Bus Stop
- Bus Stop Loading Area
- Sidewalk
- Crosswalk
- Bicycle Lane
- Centerline Striping
- High Priority Project
- Medium Priority Project
- Low/Longer Term Priority Project



# Neighborways along Wylie, Webster, Bedford, Reed and Crawford/Pride – Traffic Calming and Corridor Improvements



MovePGH Forward

Traffic Calming Example: Traffic Circle on North Euclid Neighborway

Priority: Most rated Medium, Webster rated Low  
 Cost: All rated at \$  
 Timeframe: Most rated Medium-Term, Reed rated Short-Term



# Discussion: Reviewing Recommendations/Proposals

---

- What do you like?
- What would you change?
- What would you prioritize differently?
- What is missing?

# Refresher: Proposed Projects for Today's Topics

- Centre Ave Streetscape – Corridor Improvements, Safety, Traffic Calming, Connectivity (*Includes Intersections' Reconstruction*)
- Kennard Playground Access -- Pedestrian Connectivity and Safety
- Chauncey Street Pedestrian Connector – Pedestrian Connectivity, Traffic Calming, and Plaza space
- Neighborway Improvements along Wylie, Webster, Bedford, Reed, Crawford – Traffic Calming, Corridor Improvements



# Mobility Action Team Next Steps

Meeting #2: February 1 – Bus Transit, Biking, Scooters, Proposed Trails

Meeting #3: March 1 – Parking, Transportation Demand Management

## Potential Additional Engagement Opportunities

After this meeting, we invite you to please:

1. Sign up for the Action Team online, if you have not yet done so
2. Invite others to join the Action Team and come to the next meeting
3. As you think of additional feedback, please add it to the Engage PGH page -- [engage.pittsburghpa.gov/ghdmp/mobility](https://engage.pittsburghpa.gov/ghdmp/mobility)

Questions about the process? Please contact Thomas Scharff (with City Planning) at [thomas.scharff@pittsburghpa.gov](mailto:thomas.scharff@pittsburghpa.gov)

**THANK YOU!**

# Where can you find us:

---



**Pittsburgh City Planning**



**@PLANPGH**  
**@resilientPGH**



**@planpgh**

Online at **[engage.pittsburghpa.gov/ghdmp](https://engage.pittsburghpa.gov/ghdmp)**