



ARSENAL PARK – PHASE 1

Community Meeting – Master Plan Concept Review

Thursday December 17, 2020



PITTSBURGH
PENNSYLVANIA

PASHEK  MTR

WHAT WE WILL TALK ABOUT TONIGHT

Welcome and Review of Agenda – Dave Breingan (Lawrenceville United) and Lauren Byrne Connelly (Lawrenceville Corporation)

- Technical Notes / Accessibility Notes / Ground Rules
- History of Arsenal Park Master Planning process

Who We Are & Roles – Andrea Ketzel (City of Pittsburgh, DPW)

Purpose of Tonight & What We Have Been Doing – Andrea Ketzel (City of Pittsburgh, DPW)

- What will be accomplished this evening
- Opportunities to engage and what the timeline looks like moving forward

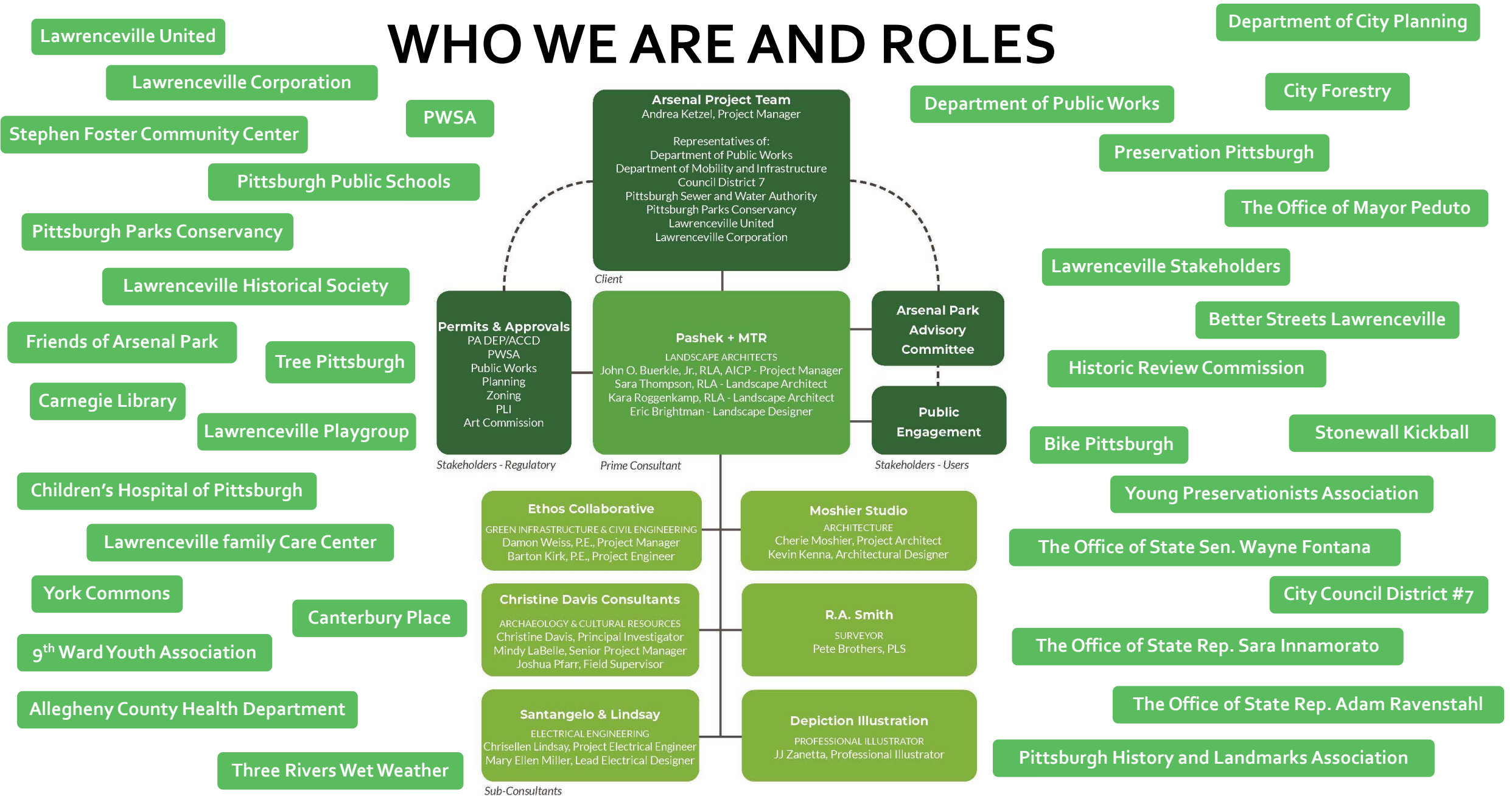
Presentation of Design Concepts – Eric Brightman (Pashek + MTR)

Breakout Rooms / Q&A – John Buerkle (Pashek + MTR), Keely McDonald (Pashek + MTR), Eric Brightman (Pashek + MTR), Andrea Ketzel (City of Pittsburgh, DPW)

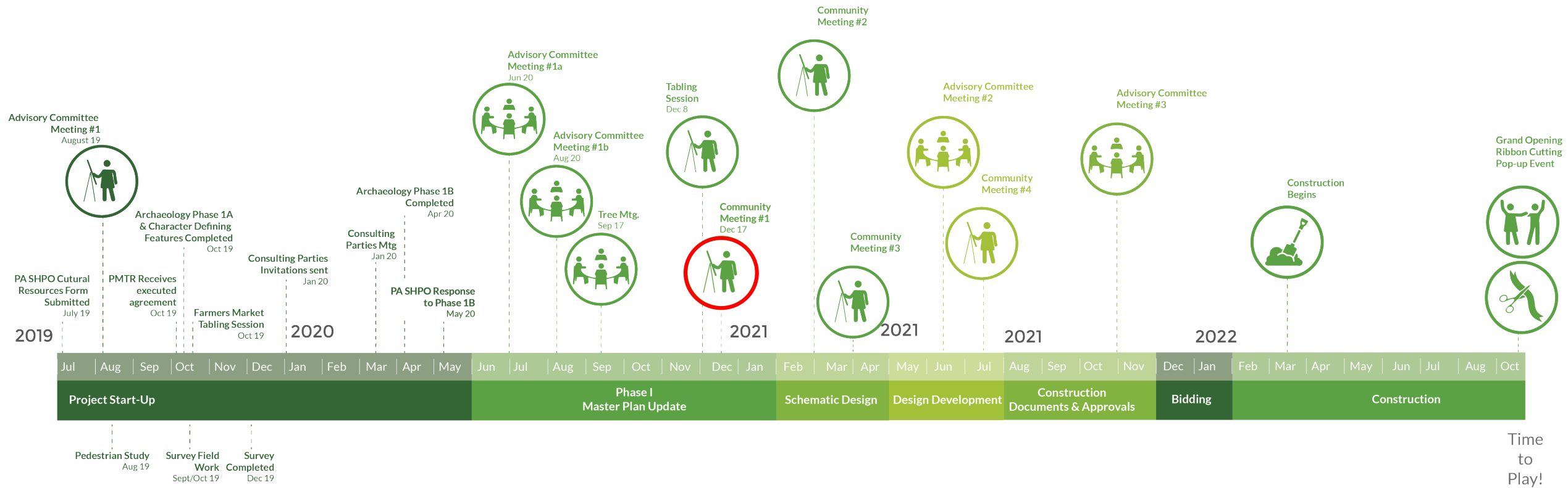
Breakout Room Report-outs – John Buerkle (Pashek + MTR), Keely McDonald (Pashek + MTR), Eric Brightman (Pashek + MTR), Andrea Ketzel (City of Pittsburgh, DPW)

Next Steps & Closing – Andrea Ketzel (City of Pittsburgh, DPW)

WHO WE ARE AND ROLES



TIMELINE / SCHEDULE



PURPOSE OF TONIGHT & WHAT WE'VE BEEN DOING

Phase 1A and 1B Archaeological Survey & Geophysical Investigation Complete (CDC, INC.)

Consulting Parties Meeting held

Archaeological findings shared with SHPO

Preliminary Master Plan concepts developed based on Archaeological findings and periods of historical significance

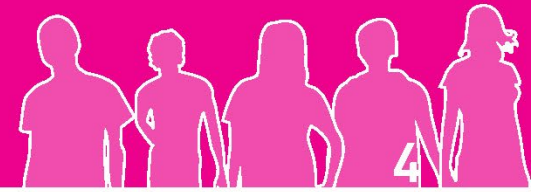
Presented Master Plan concepts to Advisory Committee – June 2020

Presented Master Plan concepts to Advisory Committee – August 2020

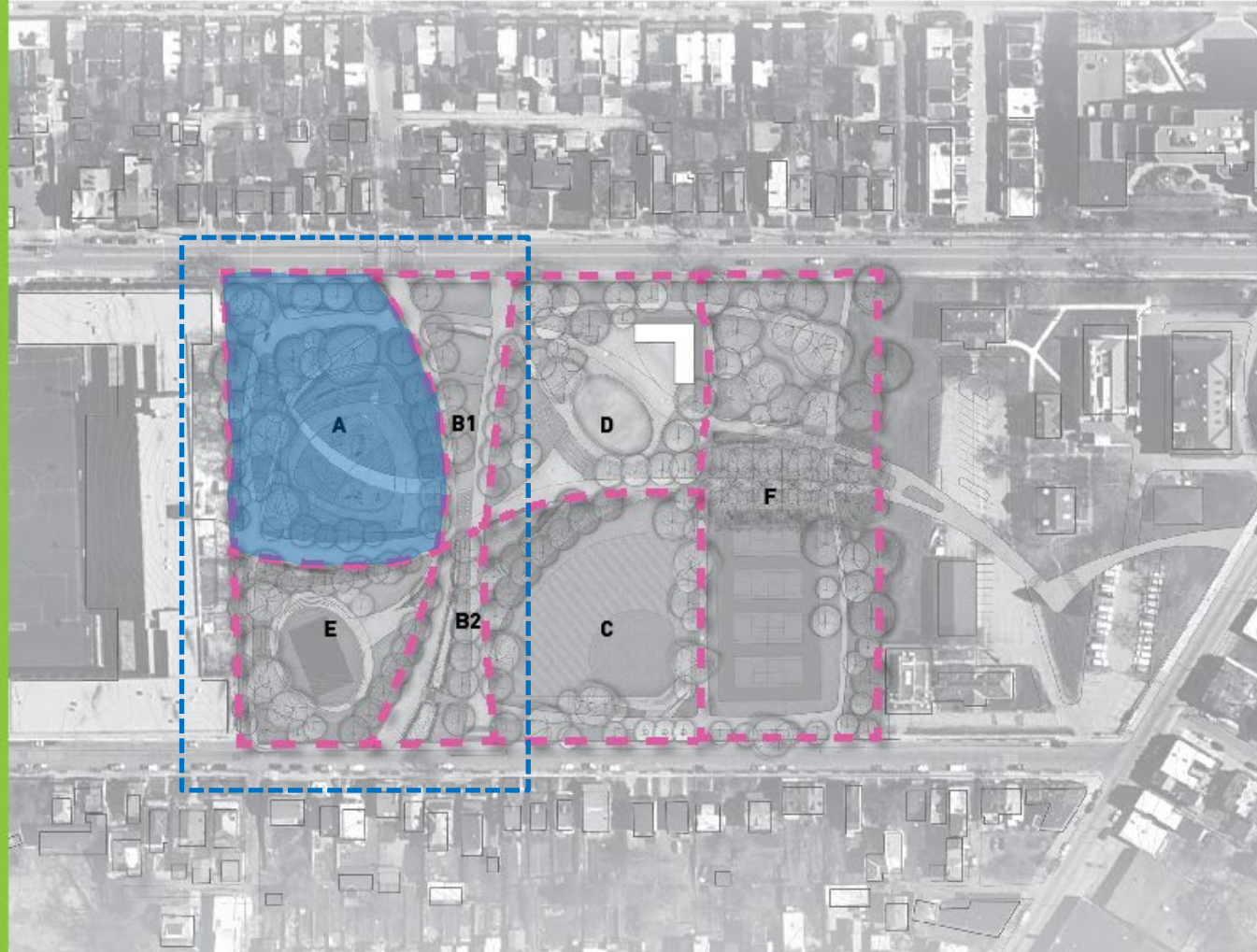
Presented revised Master Plan Concepts to Play Committee – October 2020

Master Plan Concepts uploaded to Engage PGH and presented to Lawrenceville Community – December 2020

THE MASTER PLAN







Cost Opinion

A. PLAYScape

- + Pavilion
- + 2-5 year area
- + 5-12 year area
- + Pedestrian bridge
- + Rubberized play surface
- + Arsenal school connector
- + Rain gardens

B1 + B2. MALL

- + New Paved Surface
- + Permeable Paver Areas
- + Shade Trees
- + Native Plantings
- + Seating / Benches
- + Splash Water Feature
- + Parks Standard Pole Lights
- + Rain gardens

C. BALL FIELD AND MEMORIAL GARDEN

- + Ball field
- + Lighting
- + Memorial garden
- + Interpretive signage
- + Rain gardens

D. POWDER MAGAZINE AND PERFORMANCE AREA

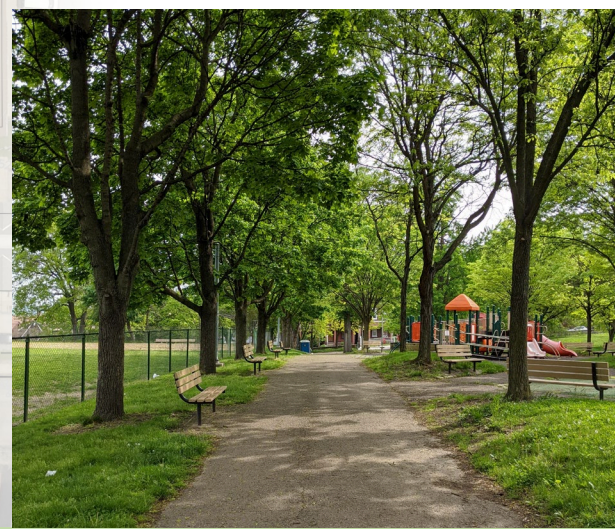
- + Building renovation
- + Reflecting pond
- + Amphitheater seating
- + Moveable tables and chairs
- + Waterfall
- + Repair stone terracing
- + Rain gardens

E. COURT PLAY SPACE

- + Activity and observation wall
- + Asphalt court surface
- + Lighting
- + Walking track surface
- + Furnishings
- + Rain gardens

F. TENNIS COURTS + WOODLAND + CONNECTION TO HEALTH DEPARTMENT

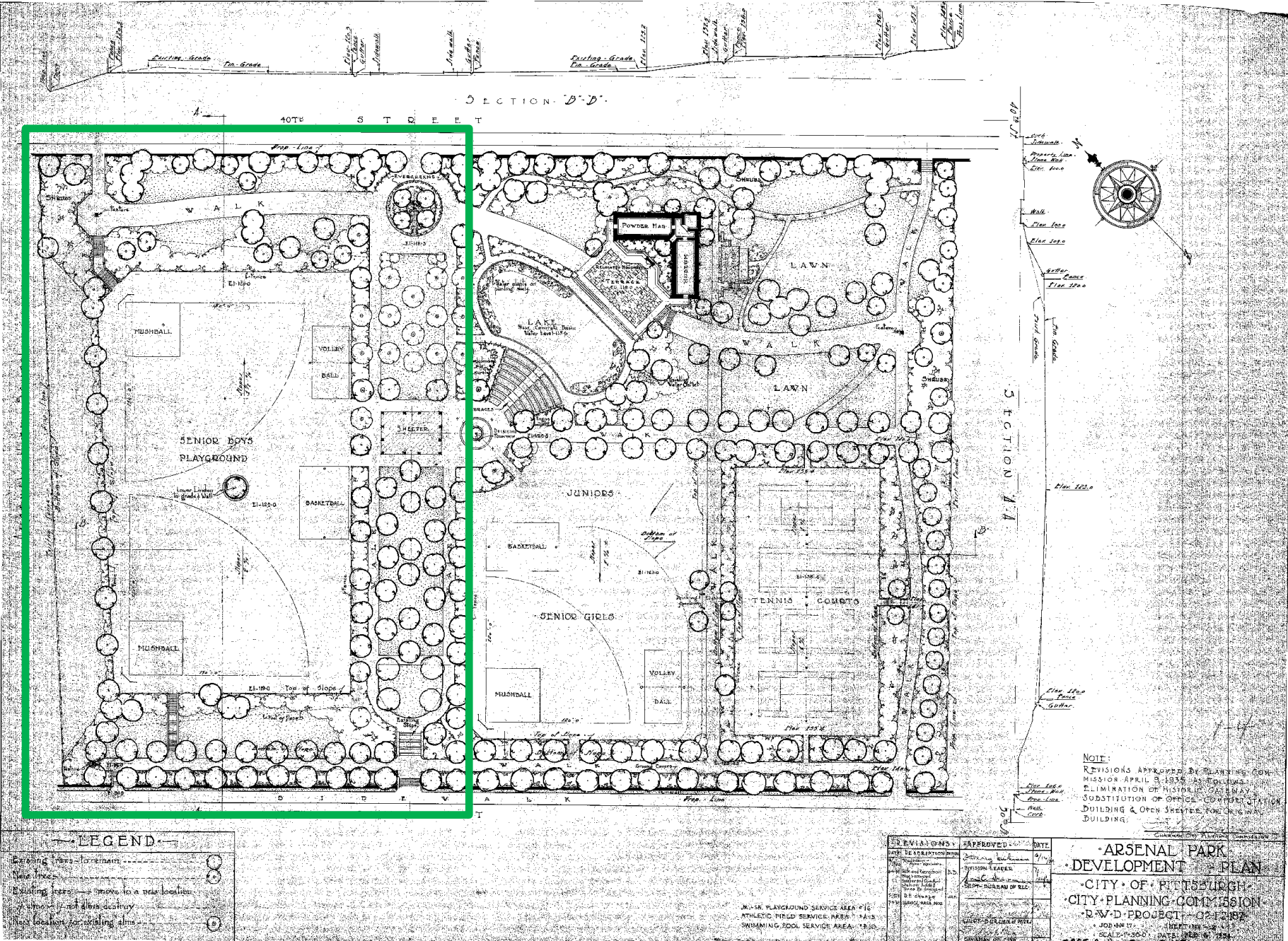
- + Removal of fencing along park boundary
- + Bike polo court
- + Bioswales
- + Lounge seating and hammocks
- + Rain gardens
- + County Health Department connector to be determined in future discussions



ARSENAL PARK – EXISTING TREE CANOPY

TAKE-AWAY FROM SHPO

- SHPO must be involved in reviewing & approving proposed plan
- Consider potential below grade archaeological conflicts
- Embrace periods of historical significance
 - Allegheny Arsenal (1814-1907)
 - Transition from Allegheny Arsenal to City Park (1907-1913)
 - 1930's Renovation
 - 1994 Renovation
- Improvements must preserve existing trees



- 104 Trees Removed (totaling 432 cal. inches)
- Significant earth moving, extensive ramps/handrails and walls would be required to achieve circulation as shown
- 16 Archaeological Structures Potentially Impacted



MASTER PLAN PROGRAM

PARK ACCESS

- Provide more accessible routes into the Park
- Accessible entrance, selectively remove portions of the perimeter stone wall
- Provide Arsenal School connector
- Restore Perimeter wall along 40th street

THE MALL

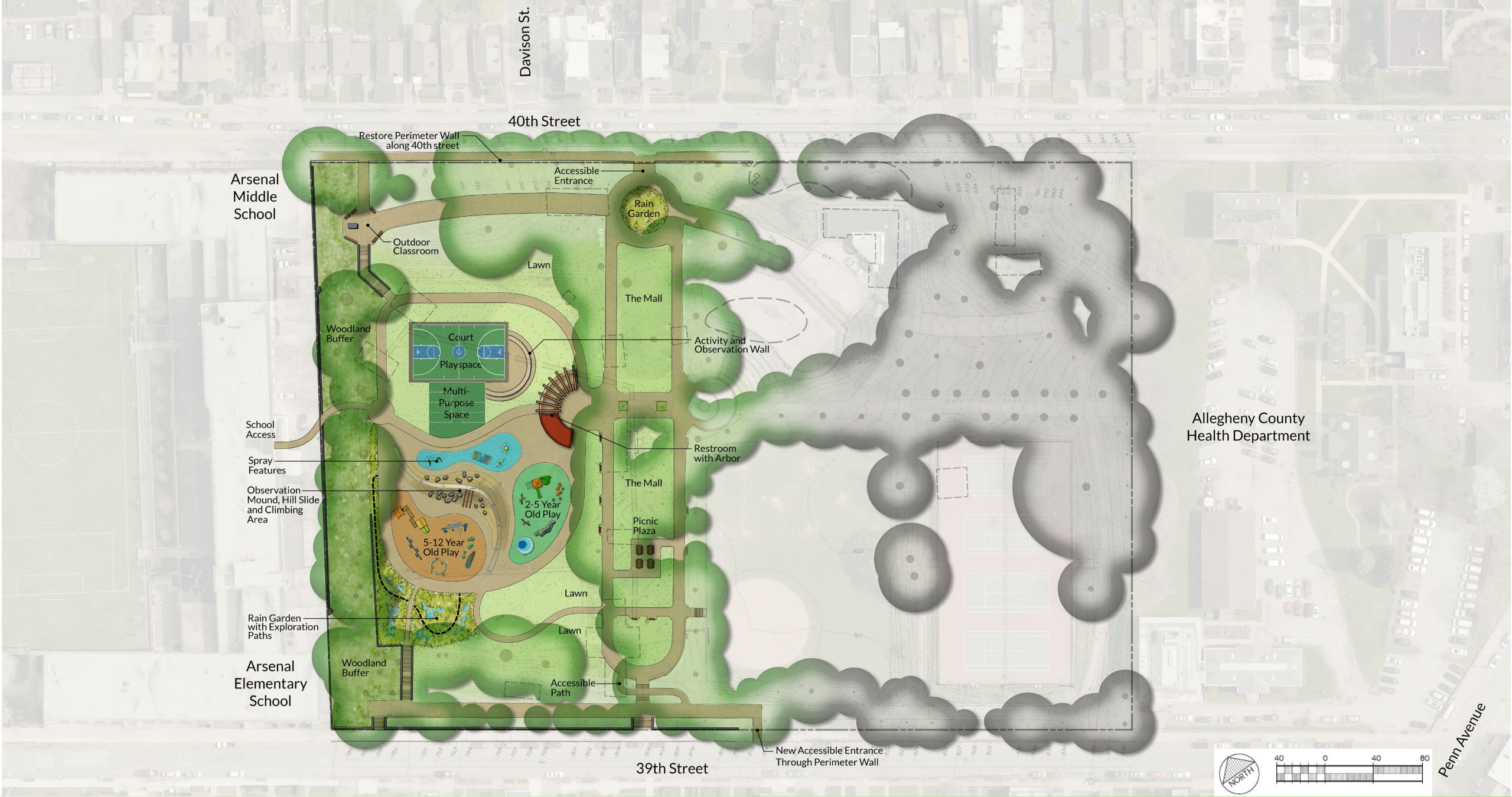
- New paved surface
- Permeable paver areas
- Shade trees
- Native plantings
- Seating/benches
- Splash water feature
- Parks standard pole lights
- Raingardens

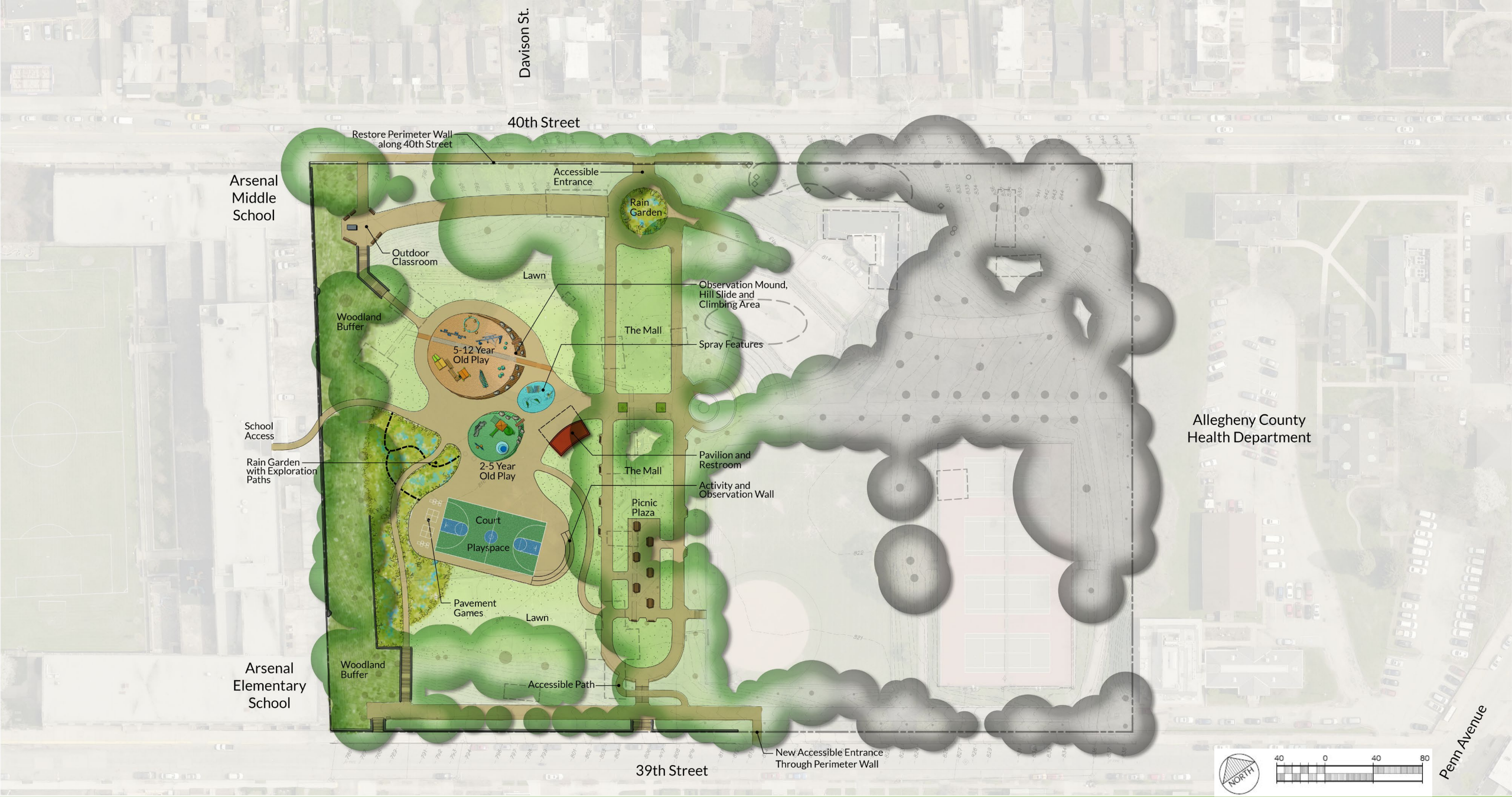
PLAYSCAPE

- Pavilion
- Restroom
- 2-5 year area
- 5-12 year area
- Pedestrian bridge
- Perimeter track
- Rubberized play surface
- Raingardens

COURT PLAY SPACE

- Activity and observation wall
- Asphalt court surface
- Lighting
- Walking track surface
- Furnishings
- Raingardens







40th Street

Arsenal Middle School

Rebuild Perimeter Wall along 40th Street

Accessible Entrance

Rain Garden

Outdoor Classroom

Improvements to Existing Diamond

Woodland Buffer

The Mall

5-12 Year Old Play

2-5 Year Old Play

Pavilion and Restroom

Court Playspace

Multi-Purpose Space

Lawn

Pavement Games

Accessible Path

Arsenal Elementary School

Woodland Buffer

39th Street

New Accessible Entrance Through Perimeter Wall

Allegheny County Health Department



Penn Avenue



INTEGRATE TOPOGRAPHY AS
A PLAY ELEMENT



USE BOLD COLORS AND
SHAPES TO CREATE FUN PLAY
SPACES



INTEGRATE TOPOGRAPHY AS
A PLAY ELEMENT



CLIMBING SKILL CHALLENGE



EMBANKMENT ROLLER SLIDE



VERTICAL PLAY



CLIMBING MOUNDS



EMBANKMENT CLIMBER



BOULDER SCRAMBLE



NET CLIMBER



CLIMBING WALL



MULTI-PURPOSE SPACE



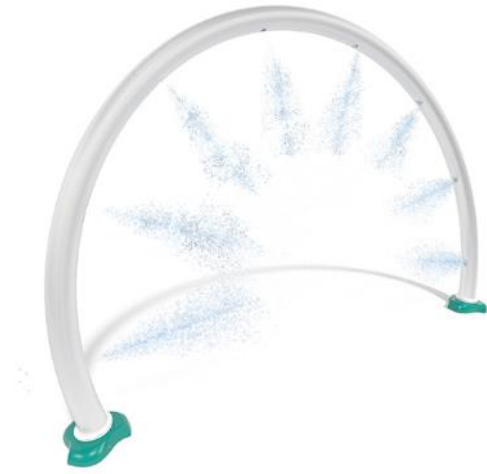
FOURSQUARE AND OTHER
PAVEMENT GAMES



FULL COURT BASKETBALL WITH
OBSERVATION SEATING AND ACTIVITY WALL



WATER BUCKET



SPRAY RING



WATER TENT



GEYSER



MISTING SPRAY



JET



WATER GLOBE



BUBBLER



COMPOSITE TOWER



CLIMBER



PYRAMID
NET CLIMBER



GEOMETRIC CLIMBER



SPINNER



COMPOSITE TOWER



NET CLIMBER



SPINNER



CLIMBER



COMPOSITE PLAY STRUCTURE



BUCKET SWINGS



PENDULUM SWING



SPINNER



SEE-SAW



SWING



COMPOSITE TOWERS



SWINGS



SPRINGERS



SOUND PLAY



PLAYHOUSE

BREAKOUT ROOMS

- **Take the next 20 minutes or so to provide feedback on the three concepts and playscape character images in smaller groups**
- **Attendees have been assigned to one of four breakout rooms**
 - Each room has been assigned a facilitator and note-taker
 - Each room will need a volunteer to provide a brief summary of what was discussed
- **After about 20 minutes, all attendees will reconvene, and each volunteer will summarize the talking points discussed**
- **Design Team will discuss next steps & closing comments**

NEXT STEPS AND CLOSING

Continue engagement on Engage PGH with concept reviews and surveys

- www.engage.pittsburghpa.gov/arsenal Concepts and Survey to remain open for input until January 5th 2021
- Lawrenceville United to assist gathering input from those residence who do not have access to a personal computer

Develop Input Activity for Arsenal School and neighborhood children and post on Engage PGH website.

Participate in future Community Meetings in Winter and Spring 2021

THANK YOU!!