

Allegheny Commons Playground

Historic Review Commission

August 4, 2021



- I. Introduction
- II. Previous and Existing Conditions
- III. Community Engagement Results
- IV. Proposed Improvements

Introduction

- The City of Pittsburgh 2021 Capital Budget Funds designate \$200,000 for Play Area Improvements at Deer Pit Playground
 - Scope of Work → Playground, Safety Surface, Minor Site Improvements
- Who is involved?
 - Council District 1
 - Department of Public Works
 - Community Partners

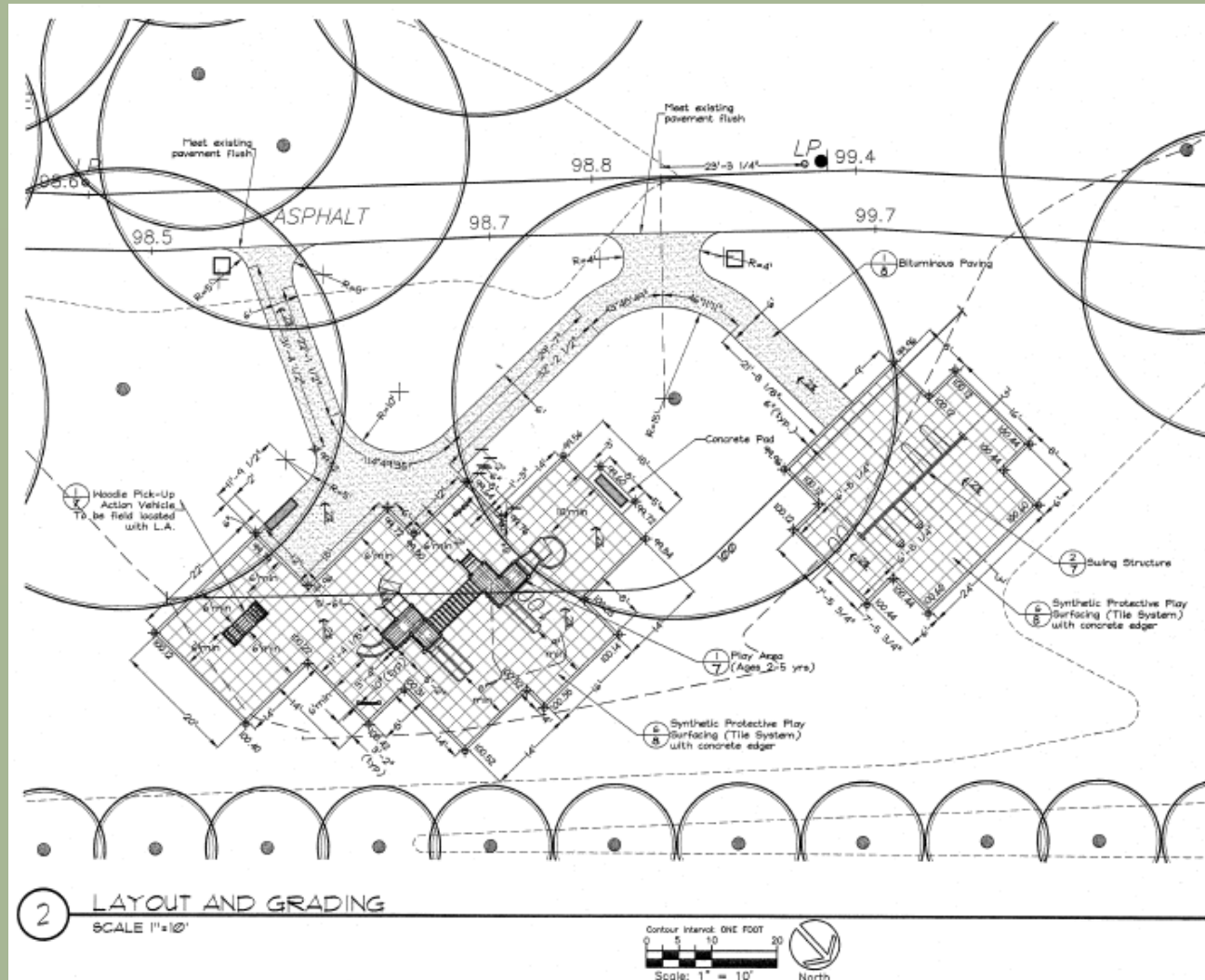
- I. Introduction
- II. Previous and Existing Conditions
- III. Community Engagement Results
- IV. Proposed Improvements

Work-to-Date

- Initial Kick-off Meeting: November 19, 2020
- Topographic Survey: December 2020
- Community Engagement Survey: December – February, 2021
 - 115 participants!
- Community Meeting: March 9, 2021
- Meeting with Allegheny West Local Review Committee: June 28, 2021
 - Request for design modifications

- I. Introduction
- II. Previous and Existing Conditions
- III. Community Engagement Results
- IV. Proposed Improvements

Previous Conditions 1997 Renovation



I. Introduction

II. Previous and Existing Conditions

III. Community Engagement Results

IV. Proposed Improvements

Previous Conditions



- I. Introduction
- II. **Previous and Existing Conditions**
- III. Community Engagement Results
- IV. Proposed Improvements

Existing Conditions



- I. Introduction
- II. Previous and Existing Conditions**
- III. Community Engagement Results
- IV. Proposed Improvements

Existing Playgrounds



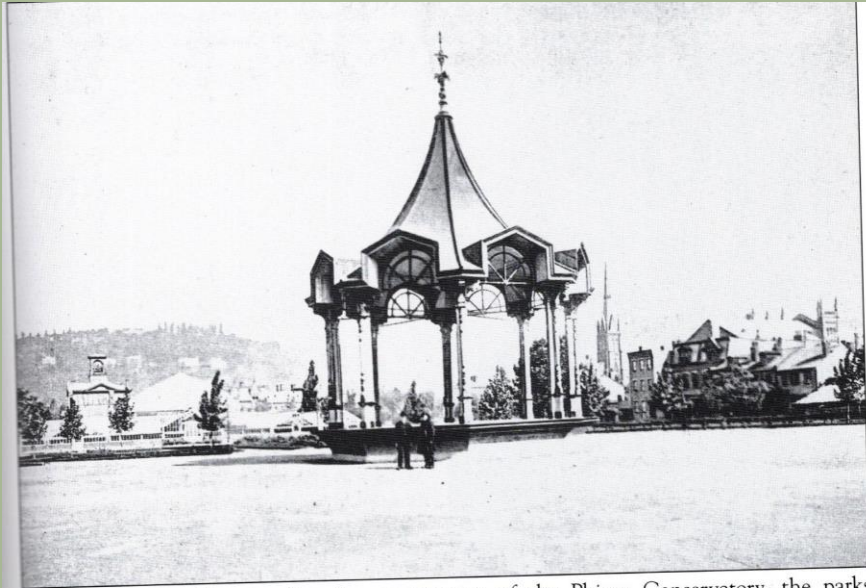
- I. Introduction
- II. **Previous and Existing Conditions**
- III. Community Engagement Results
- IV. Proposed Improvements

Existing Playgrounds



- I. Introduction
- II. **Previous and Existing Conditions**
- III. Community Engagement Results
- IV. Proposed Improvements

Design Inspiration



MUSIC PAVILION. Shortly after the construction of the Phipps Conservatory, the parks commission contracted for the design and construction of a music pavilion to be placed near the conservatory. The design of architect James Madison Balph was selected. As the project was under construction, Balph died, and his partner, Andrew Peebles, completed the work.

Architectural

Rustic



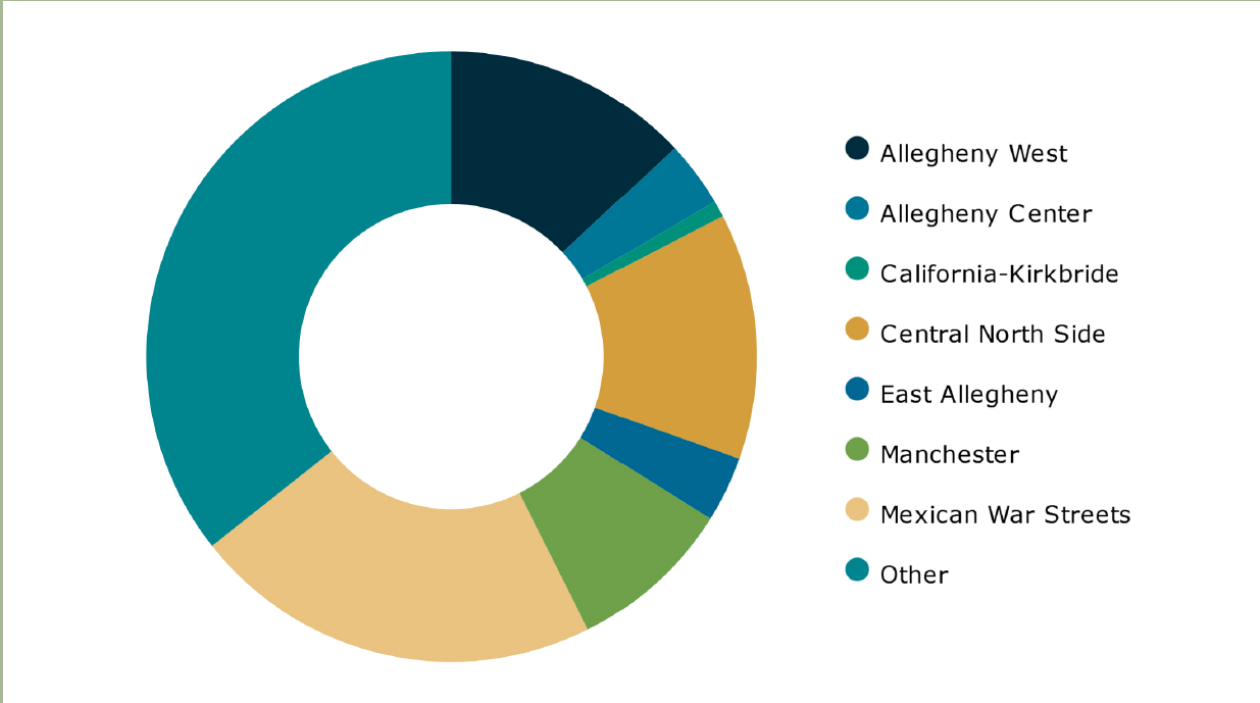
A 2116 Allegheny Park Lake, Allegheny, Pa.

Be sure and use Pittsburgh's One Big Classified Want and Real Estate Medium, The Gazette Times. "Sunday is Everybody's Day."

- I. Introduction
- II. Previous and Existing Conditions
- III. Community Engagement Results
- IV. Proposed Improvements

Community Engagement Results

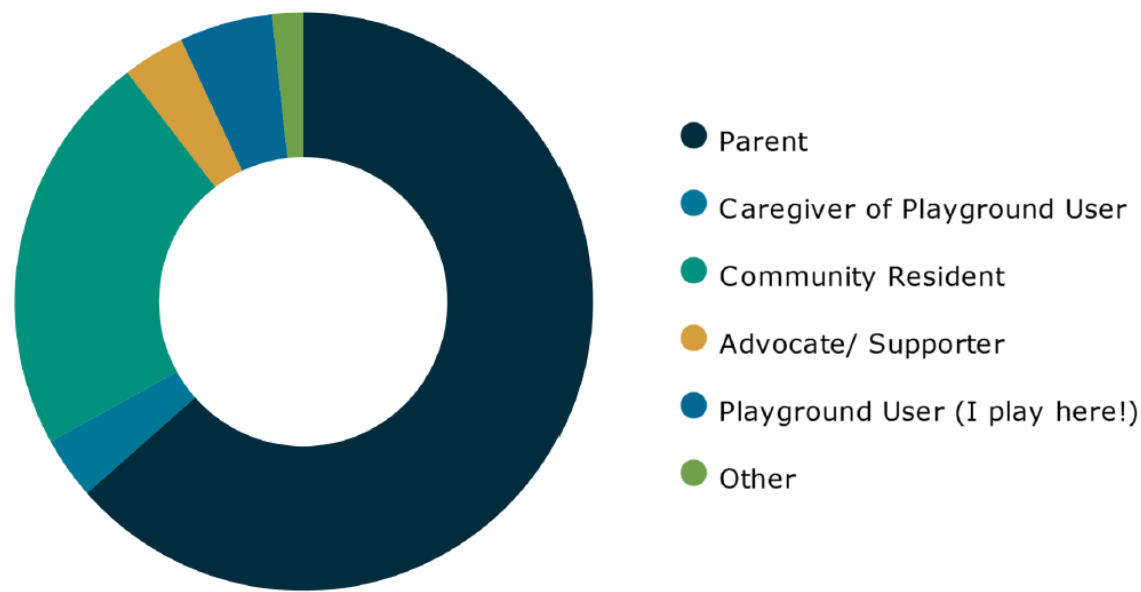
What neighborhood do you live in?



- I. Introduction
- II. Previous and Existing Conditions
- III. Community Engagement Results**
- IV. Proposed Improvements

Community Engagement Results

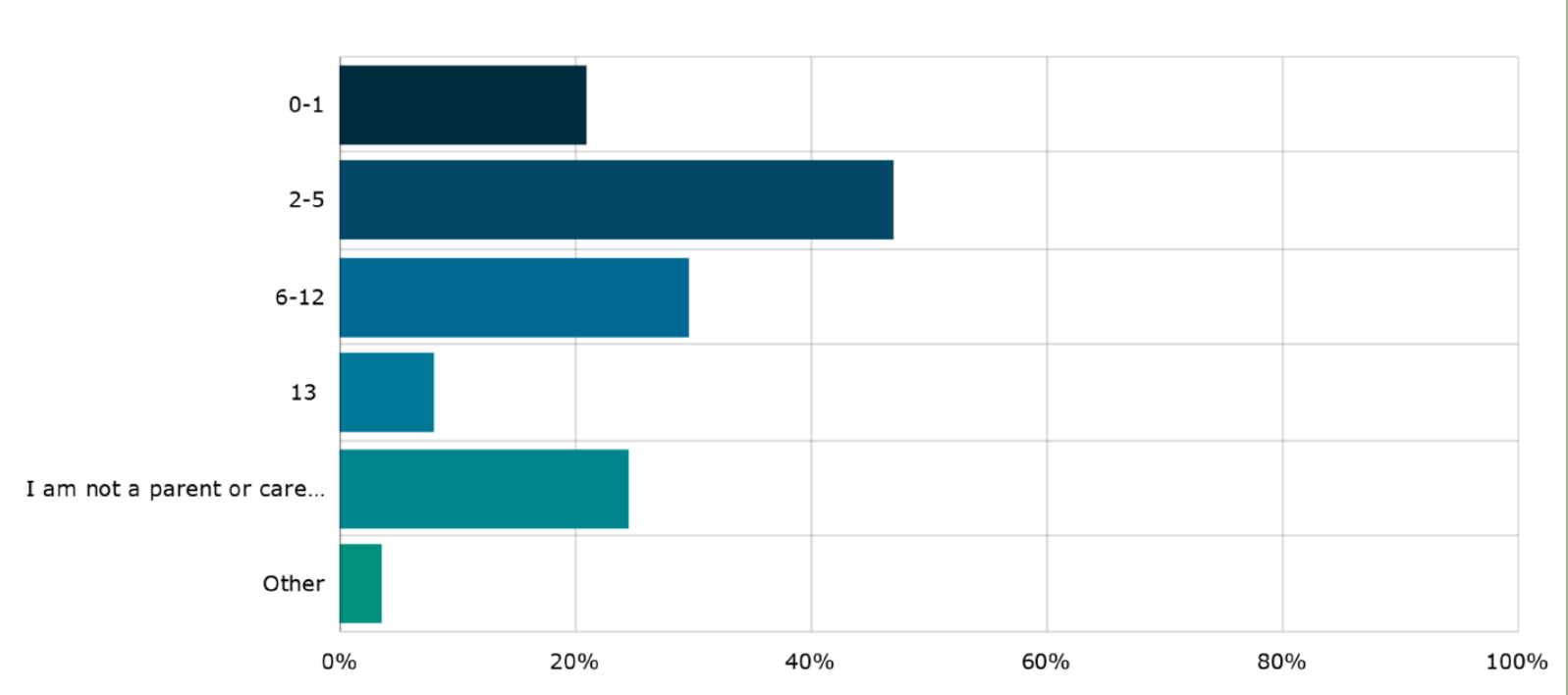
What is your relationship to the playground?



- I. Introduction
- II. Previous and Existing Conditions
- III. Community Engagement Results**
- IV. Proposed Improvements

Community Engagement Results

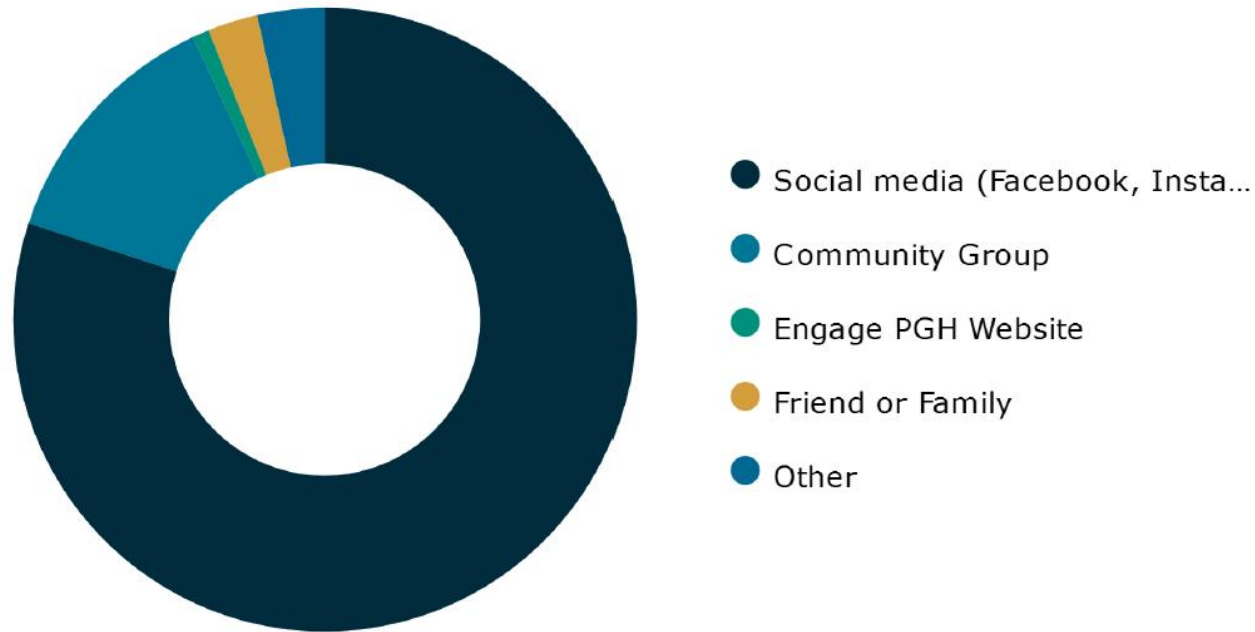
If you are a parent or caregiver, what are the ages of the children in your care?



- I. Introduction
- II. Previous and Existing Conditions
- III. Community Engagement Results**
- IV. Proposed Improvements

Community Engagement Results

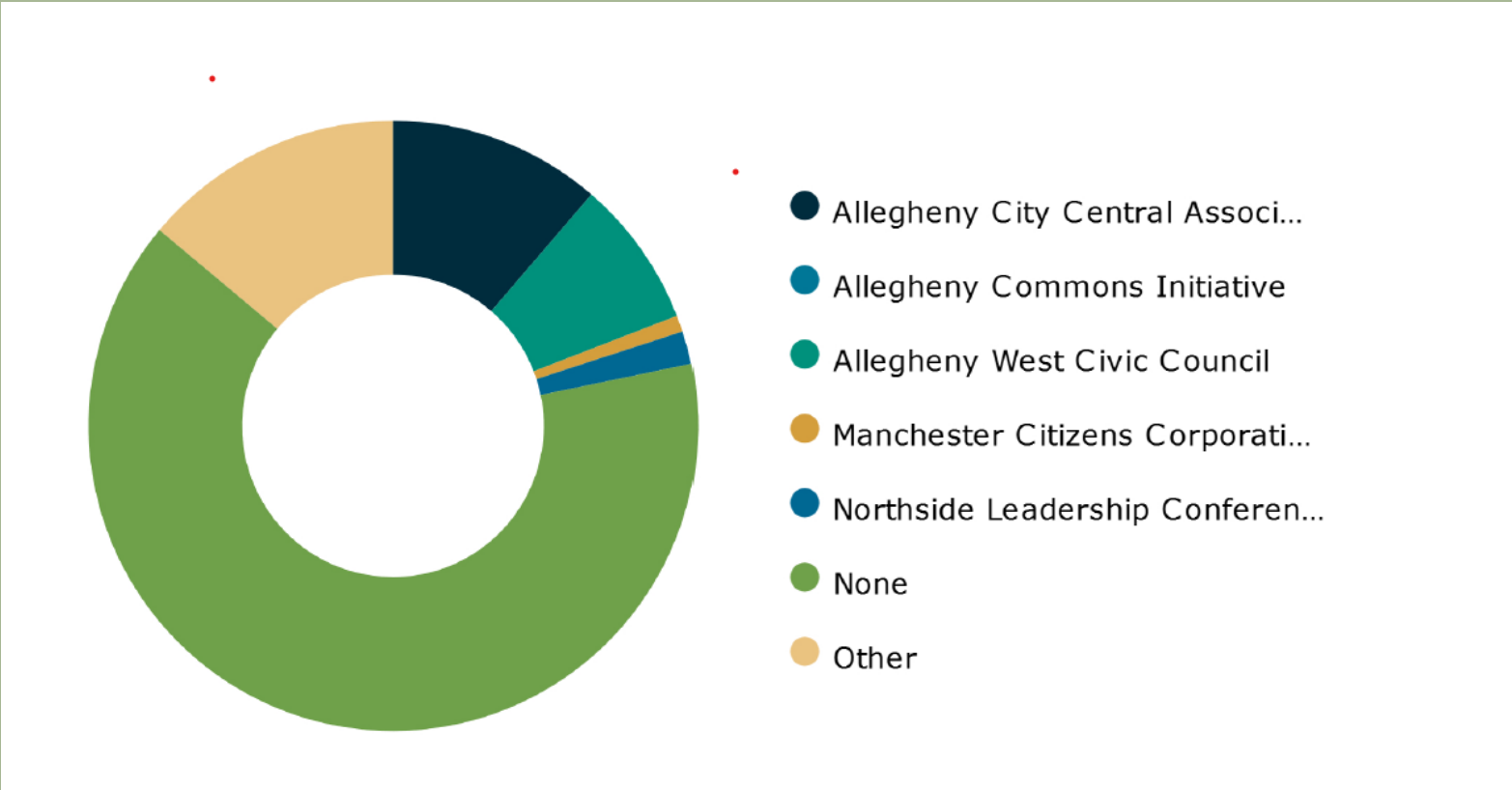
How did you hear about the survey?



- I. Introduction
- II. Previous and Existing Conditions
- III. Community Engagement Results**
- IV. Proposed Improvements

Community Engagement Results

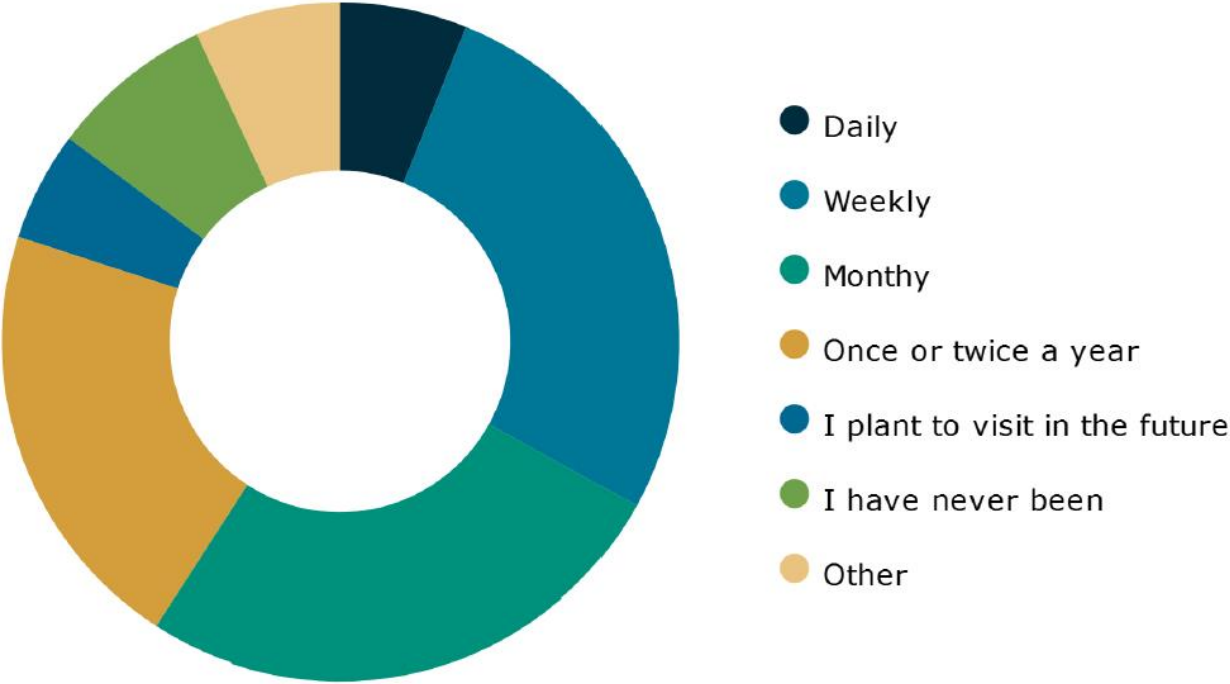
Are you affiliated with any of the following groups?



- I. Introduction
- II. Previous and Existing Conditions
- III. Community Engagement Results**
- IV. Proposed Improvements

Community Engagement Results

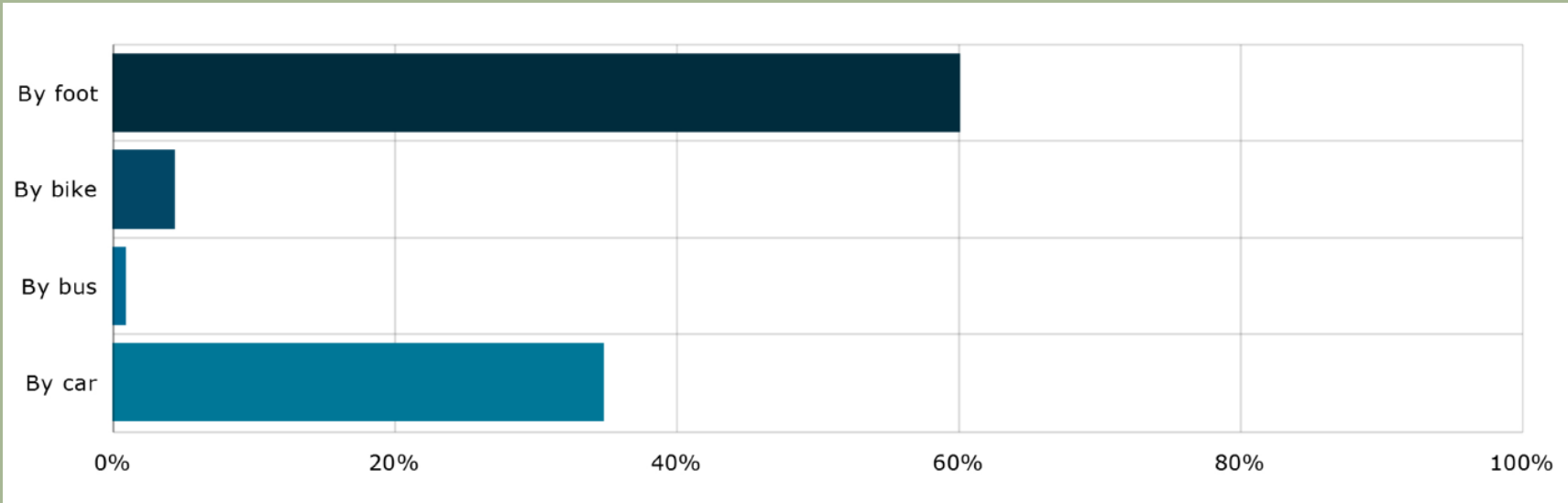
How often did you visit the playground prior to COVID-19?



- I. Introduction
- II. Previous and Existing Conditions
- III. Community Engagement Results**
- IV. Proposed Improvements

Community Engagement Results

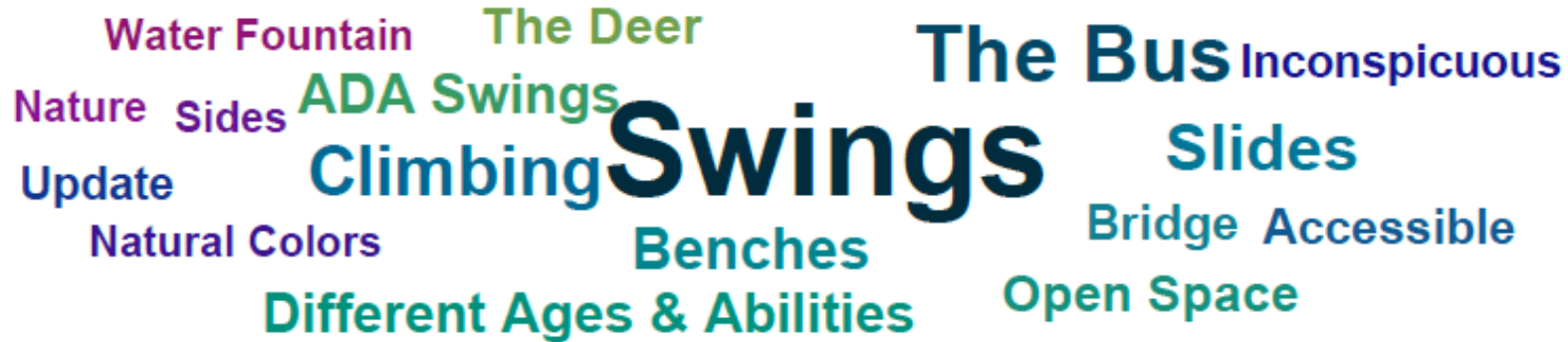
How do you usually get to the playground?



- I. Introduction
- II. Previous and Existing Conditions
- III. Community Engagement Results**
- IV. Proposed Improvements

Community Engagement Results

What parts of the previous playground would you like to see in the new one?



A word cloud of playground features. The words are arranged in a horizontal, cloud-like shape. The most prominent word is 'Swings' in the center, rendered in a large, bold, dark blue font. Other words include 'Climbing' (large, bold, dark blue), 'The Bus' (large, bold, dark blue), 'Slides' (medium, bold, dark blue), 'Inconspicuous' (medium, bold, dark blue), 'ADA Swings' (medium, bold, green), 'The Deer' (medium, bold, green), 'Water Fountain' (medium, bold, purple), 'Nature' (medium, bold, purple), 'Sides' (medium, bold, purple), 'Update' (medium, bold, dark blue), 'Natural Colors' (medium, bold, purple), 'Benches' (medium, bold, dark blue), 'Bridge Accessible' (medium, bold, dark blue), 'Open Space' (medium, bold, dark blue), and 'Different Ages & Abilities' (medium, bold, green).

- I. Introduction
- II. Previous and Existing Conditions
- III. Community Engagement Results
- IV. Proposed Improvements

Community Engagement Results

What parts of the previous playground would you like to see changed in the new one?



A word cloud of community feedback on playground improvements. The words are arranged in a horizontal, overlapping manner. The most prominent words are 'Updated', 'Bigger', 'Picnic Tables', 'More Swings', 'Seating for Parents', 'ADA Friendly', 'Natural Materials', 'More Options', 'Tweens and Teens', 'Not Wood', 'Accessible', 'Imaginative', 'Climbing', 'Bike Racks', 'Zip Line', 'All Ages & Abilities', 'Obstacle Course', and 'Moderinize'.

Natural Materials More Options Tweens and Teens
Bike Racks Updated Picnic Tables Not Wood Accessible
Imaginative Climbing Bigger More Swings
Zip Line ADA Friendly Seating for Parents Moderinize
All Ages & Abilities Obstacle Course

- I. Introduction
- II. Previous and Existing Conditions
- III. Community Engagement Results
- IV. Proposed Improvements

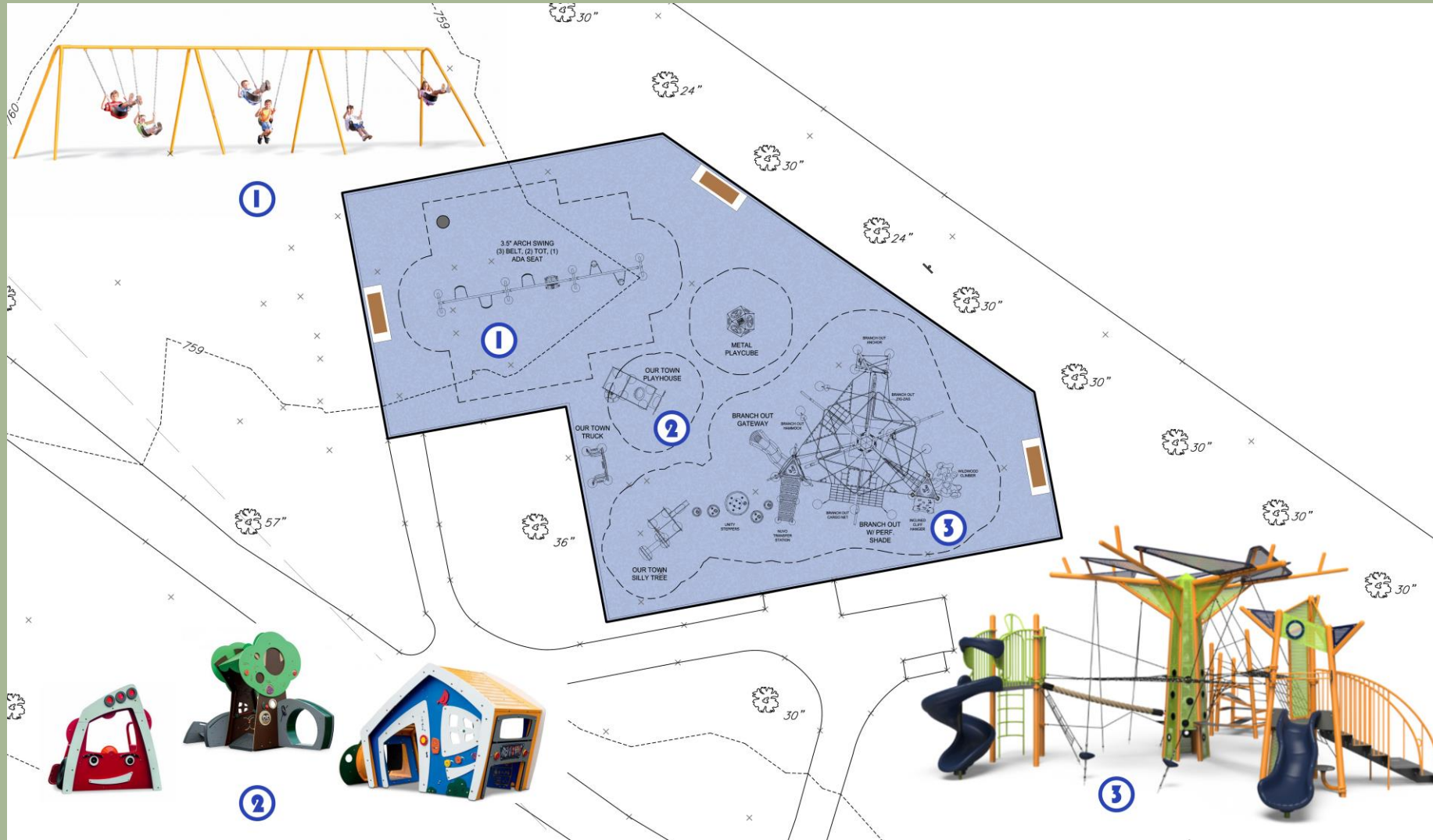
Community Engagement Results

What style of equipment do you think is most appropriate for the playground?



- I. Introduction
- II. Previous and Existing Conditions
- III. Community Engagement Results
- IV. Proposed Improvements

Proposed Playground Plan



- I. Introduction
- II. Previous and Existing Conditions
- III. Community Engagement Results
- IV. Proposed Improvements**

Design Modifications



- I. Introduction
- II. Previous and Existing Conditions
- III. Community Engagement Results
- IV. Proposed Improvements**

Design Modifications



- I. Introduction
- II. Previous and Existing Conditions
- III. Community Engagement Results
- IV. Proposed Improvements**

Contextual Site Rendering



- I. Introduction
- II. Previous and Existing Conditions
- III. Community Engagement Results
- IV. Proposed Improvements**

- Contact: andrea.ketzel@pittsburghpa.gov
- Follow Updates: <https://engage.pittsburghpa.gov/deer>

- I. Introduction
- II. Previous and Existing Conditions
- III. Community Engagement Results
- IV. Proposed Improvements**