



Move PGH / Scooters - Hill District

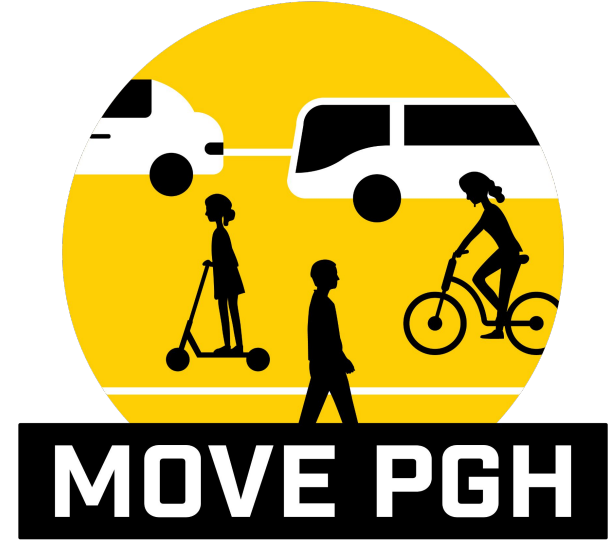
Tosh Chambers - Move PGH

Caroline Seifert - DOMI

(3/8/22)

Move PGH

- **Move PGH** is a unique two-year pilot program to provide all Pittsburghers with access to more transportation choices
- Formed by the **Pittsburgh Mobility Collective (PMC)**: Includes Port Authority, Healthy Ride, Scoobi, Zipcar, Waze Carpool, Transit App, and Spin Scooters
- Aims to coordinate these options as a **unified service, both digitally and physically**
- **Transit App** features real-time transit info and digital ticketing, also helps unlock Healthy Ride and Spin, soon to feature others
- **Mobility hubs** will be introduced to have all options available in one central location
- <https://move-pgh.com/>



Move PGH:

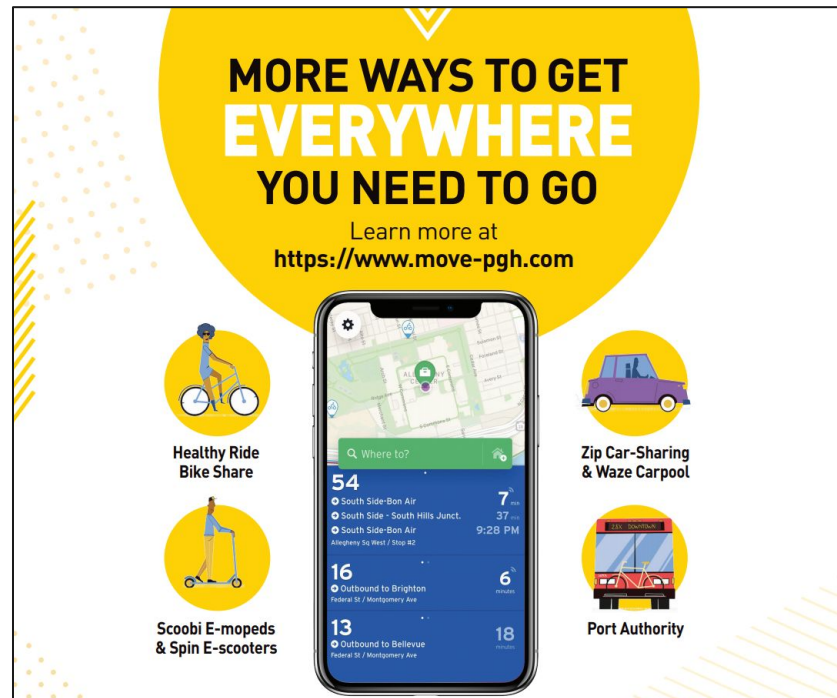
Physical

— (Mobility Hubs)

&

Digital

(Transit App)



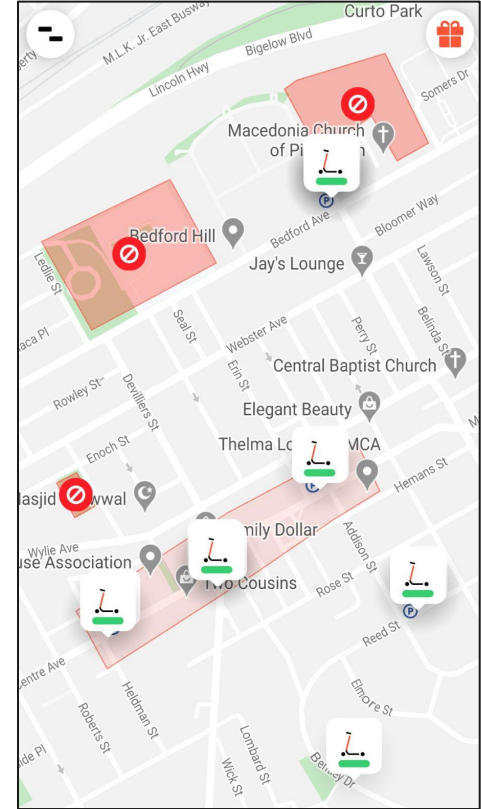
SCOOBI Mopeds

- Founded in Pittsburgh in 2018 by Pitt graduate
- Operates <100 dockless electric mopeds in a limited geography
- Moped has a range of 30 miles, top speed of 30 mph
- Offers helmets in trunk
- Must have a license and be 18 or older
- Costs \$2 to start a trip, \$0.36 per minute



SPIN Scooters

- Micro-mobility company founded in 2016 offering **dockless e-scooters for rent**, operates in US and internationally
- Selected by the city in an **RFP**, City prepared for launch for 1+ year
- Permitted and managed by the City's DOMI
- Launched 1,000 scooters and 15 hubs in **July 2021**
- Can use “**geofencing**” and other policies to aid operations
- **Flexible pricing** for low-income populations
- <https://move-pgh.com/scooterfaq>



Why Scooters?

- Studies have shown scooters can be effective in making short trips (usually 0.5 - 1.5 mi)
- Commonly used to connect to or from transit in the first/last mile of commutes
- Provides redundancy in absence of alternatives
- Useful on hills
- Zero emissions
- Less space and energy than cars!



How does it work?

- Open up the Spin app to find the nearest scooter
- Set up payment method, verify age (must be 18+)
- Watch instructions and rules to riding
- Go for a ride (safely!)
- Park in any location, according to instructions
- Works very similarly to **Scoobi**
- \$1 to start a trip, and \$0.39 for each minute of your





Rules for Scooter Users

Riding:

- Same rules as riding a bike on the road
- Riding permitted in the street, in bike lanes, or on riverfront trails
- No riding in the parks (for now)
- No riding on sidewalks!!!
- Max speed of 15 mph

Parking:

- May park in the parking lane in legal parking spaces, perpendicular to the curb
- Parking will be disabled in certain places (parks, trails, most business districts)
- In business districts parking will be restricted to certain points: mobility hubs and corrals
- No blocking pedestrian pathways!!!

Spin Access

SPIN offers **75% discounted rides** to those with limited incomes who qualify.

Users **without** a smartphone or credit card are still able to rent scooters.


Language options in Spanish, Mandarin, Arabic, and others.

“Access Zones” also give 25% discount to trips started in Hill District and other priority communities.

<https://www.spin.app/spin-access>

Spin Access

**Income qualified?
Looking for a ride?
Let us get you there.**



Sign up for Spin Access to receive half-price scooter rides

Only \$0.50 to start + \$.07 a min.

1

Sign up for Spin Access online, at one of our community events, or with a community liaison by showing eligible income level.

2

Once approved, automatically receive half-price rides when logged into your account in the Spin app.

3

Find a Spin scooter, unlock the scooter, and be on your way!

**No credit or debit card?
No problem!**


Income-qualified residents can use cash to buy a Spin Access card at partner locations. Just follow the instructions on the card to add balance to your Spin account.

www.spin.pn/chicago

SPIN

Spin Access

**¿Ingresos calificados?
¿Buscas un aventón?
Déjanos llevarte a tu destino.**



Regístrate a “Spin Access” para recibir paseos de scooter a mitad de precio

Solo \$0.50 para comenzar + \$0.07 por minuto

1

Inscríbete por Spin Access por internet o atiende uno de nuestros eventos comunitarios para verificar si eres elegible.

2

Una vez aprobado automáticamente recibes 50 por ciento de descuento cuando viajes usando Spin.

3

Encuentra una Spin Scooter, desbloquee, y viaja!

**No tienes tarjeta de crédito o débito?
No hay problema!**

Residentes elegibles pueden usar dinero en efectivo para comprar una tarjeta de Spin Access en lugares calificados. Simple sigue las instrucciones en la tarjeta para agregar dinero a tu cuenta con Spin.

www.spin.pn/chicago

SPIN

Mobility Hub Plans

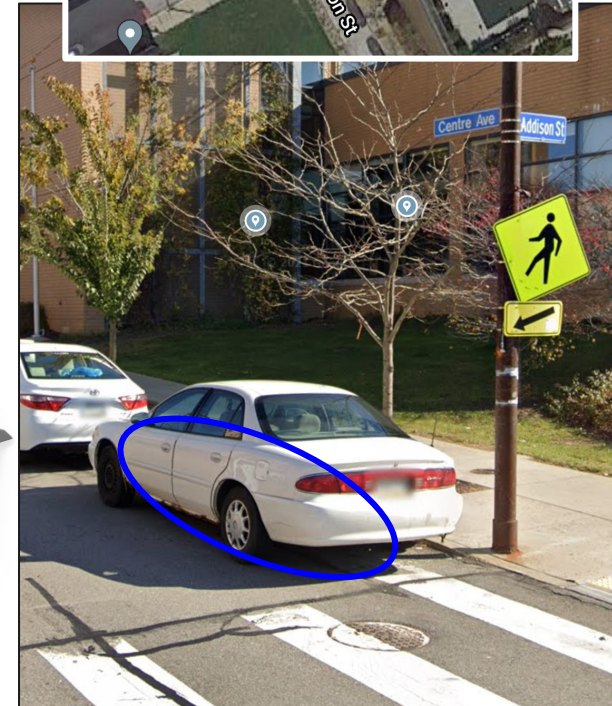
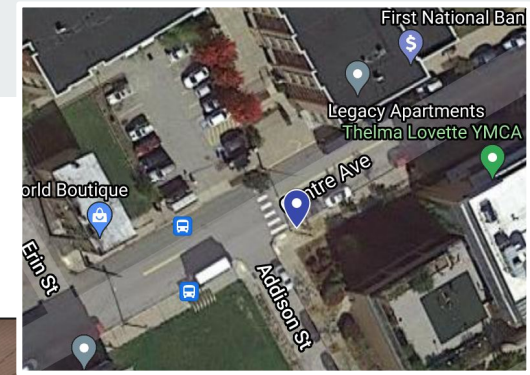
DOMI is installing hubs throughout the city, providing transit info and scooter charging.

Other features (carshare, bikeshare, info, etc.) may also be included.

DOMI plans to introduce a mobility hub in Hill District in 2022, currently designing electrical components.

Presented at a Hill District meeting in July 2021, gained support for a hub near the YMCA.

Could discuss other possible locations if desired.



Additional Points

- Seated scooters coming this Spring!
- Spin is available for community events
- Parking: geofencing/corrals help organize
- Riding in tunnels, other unsafe locations
- Visibility concerns
- Common uses in the Hill District



Questions?

move-pgh.com

tosh@move-pgh.com

