



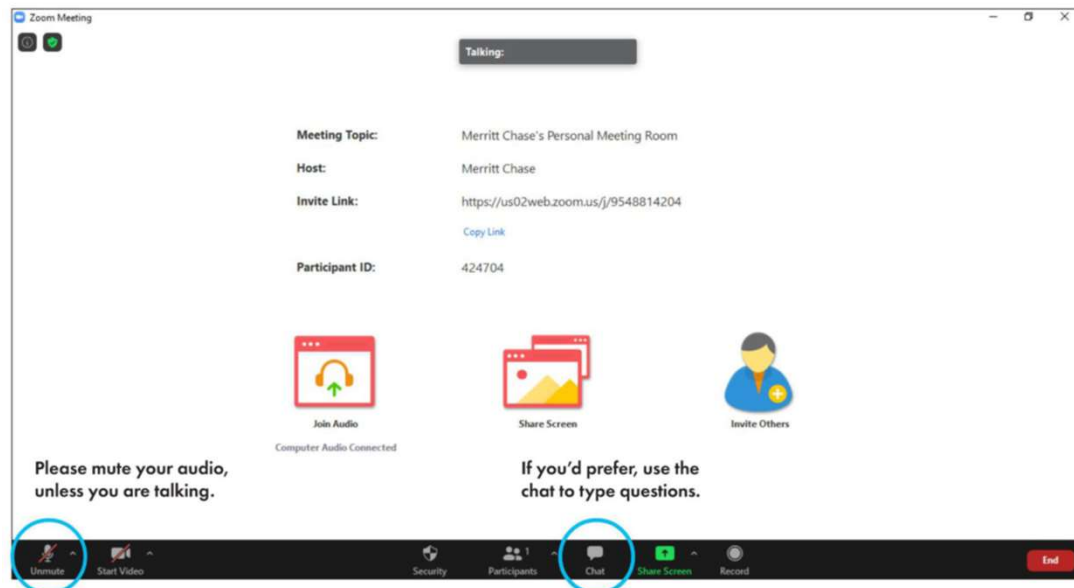
City of Pittsburgh

# **SWINBURNE BRIDGE REPLACEMENT PROJECT**

**JULY 14, 2022  
6:30 PM**

# Meeting Guidelines

- Please show respect for each other
- Save questions for the end of the presentation, or type them in the chat
- Raise your virtual hand when you want to speak and then wait to be called
- Share the conversation time with everyone



# Introductions

- City of Pittsburgh, Department of Mobility and Infrastructure
  - Zachary Workman, PE – Project Manager
- Pennsylvania Department of Transportation
  - Anthony Annett, PE – PennDOT, Project Manager
- Alfred Benesch & Company
  - Dean Morrison, PE – Design Consultant, Project Manager

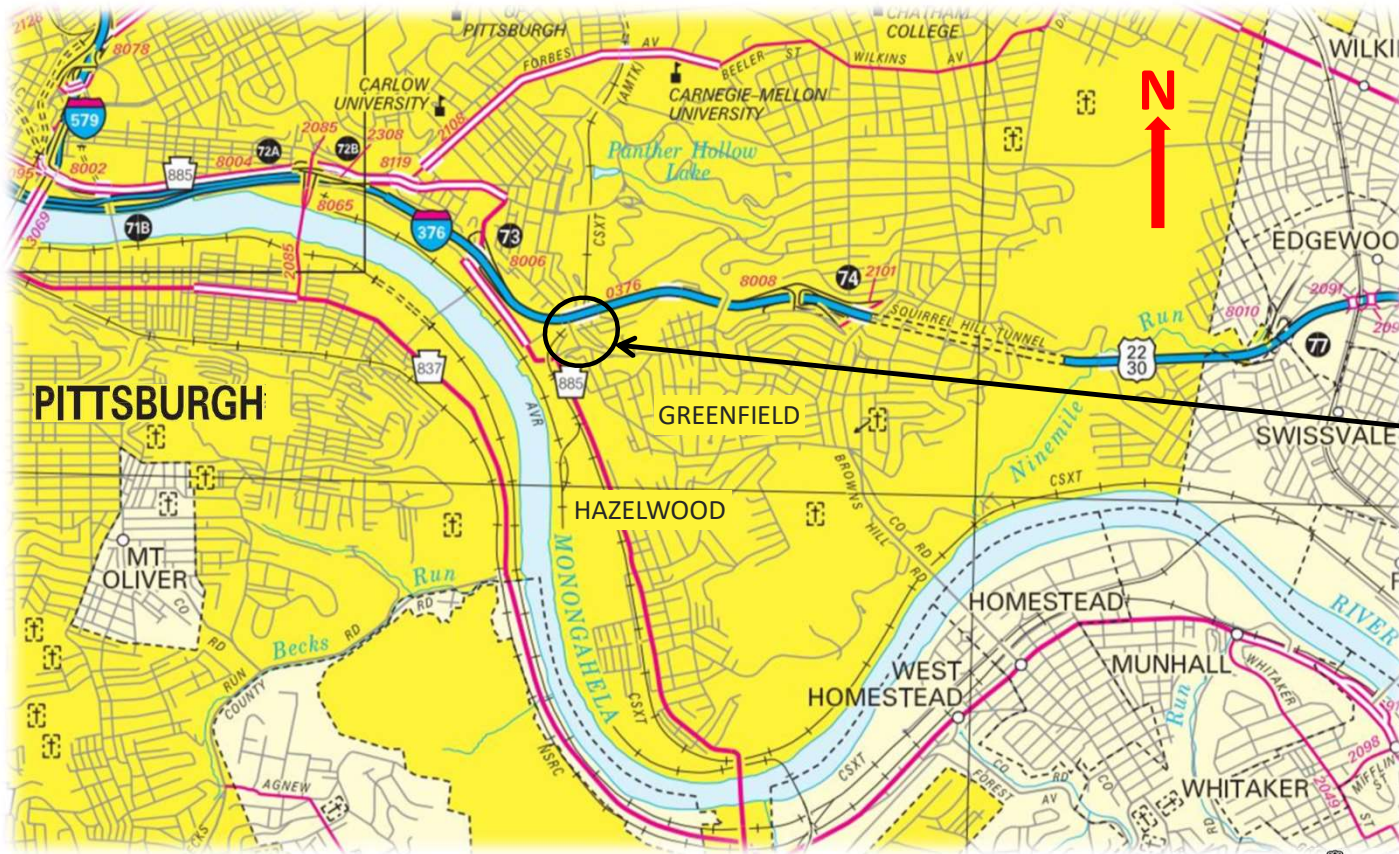


# Presentation Agenda

- Project Overview
- Project Purpose and Needs
- Corridor Characteristics
- Project Improvements
- Conceptual Traffic Control During Construction
- Steps Moving Forward
- Project Input / Feedback



# Project Overview - Vicinity



Project Site  
Swinburne Bridge  
(Frazier Street) over  
Saline Street and  
CSXT / AVR



benesch



# Project Overview - Location



Project Site  
Swinburne Bridge  
(Frazier Street) over  
Saline Street and  
CSXT / AVR



benesch

# Project Overview – Original Bridge

Sylvan Avenue Bridge  
Circa 1900

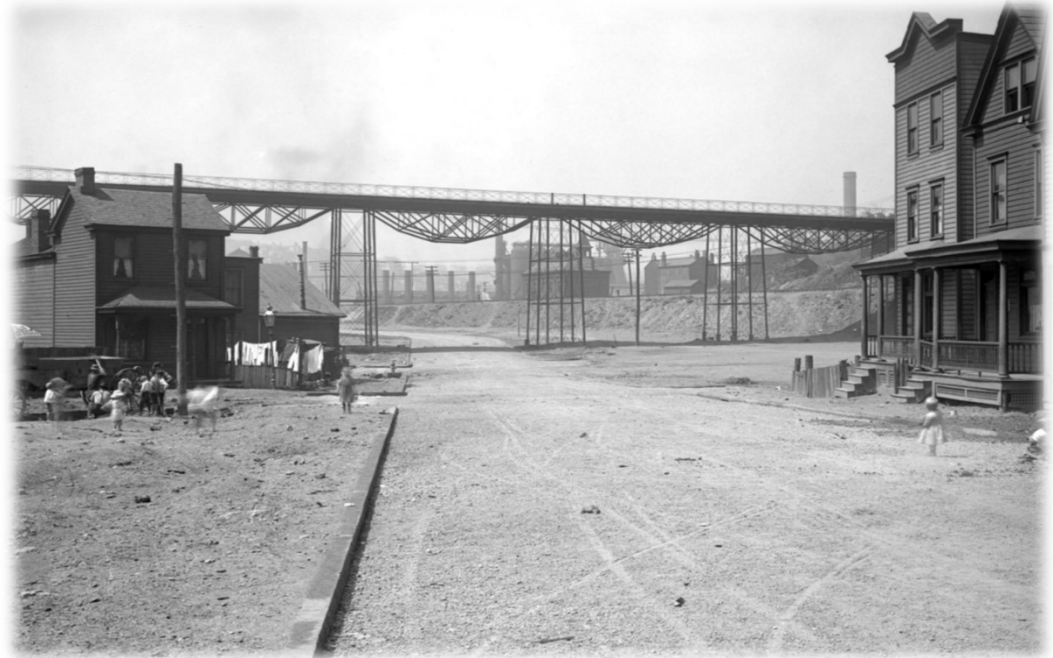


Photo Credit: [historicpittsburgh.org](http://historicpittsburgh.org)





# Project Overview – Existing Bridge



Swinburne Bridge

Built in 1915

Rehabilitated in 1989 & 2013



Photo Credit:

[historicpittsburgh.org](http://historicpittsburgh.org)



benesch



# Project Purpose

To provide a safe and sustainable crossing of Swinburne Bridge (Frazier Street) over Saline Street and the CSX/AVRR railroad for vehicular, bicycle, and pedestrian traffic.



# Project Needs

- The 107 year-old bridge is in poor condition and is non-redundant.
- The superstructure exhibits deterioration and section loss.
- The bridge was posted for 21 tons in 2014.
- Speed reduction and pedestrian safety at Greenfield/Frazier St. Intersection.



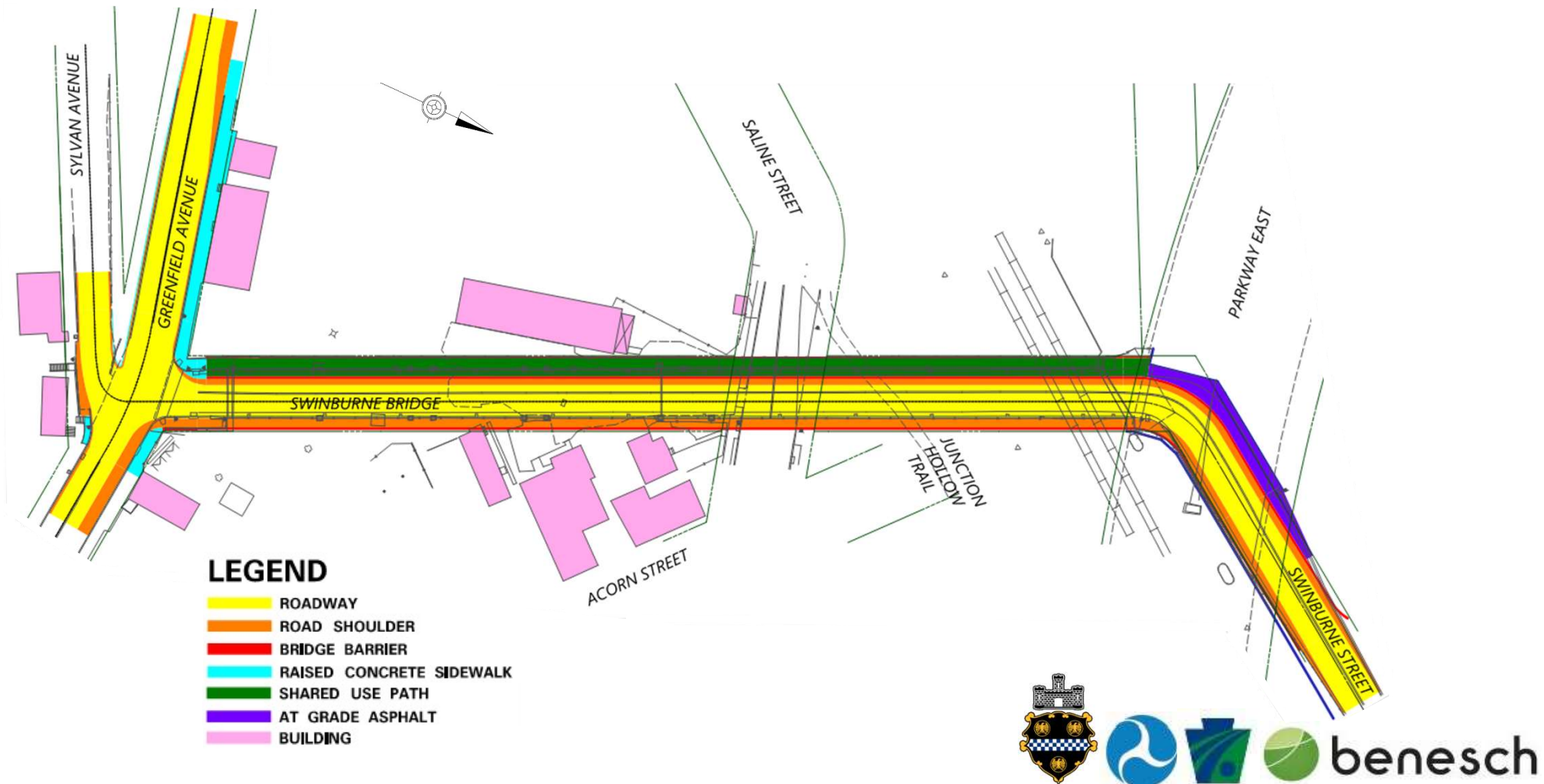
# Project Improvements

- ✓ Replace the existing Swinburne Bridge
- ✓ Reconstruct roadway approaching the new structure
- ✓ Replace sidewalks on approach roadway.
- ✓ Install new traffic signal at the intersection of Greenfield Avenue and Frazier Street
- ✓ Install a left turn lane from eastbound Greenfield Avenue to northbound Frazier Street
- ✓ Improvements to drainage, signing, lighting, pavement marking, ADA ramps, and guiderail



benesch

# Project Improvements – Plan View

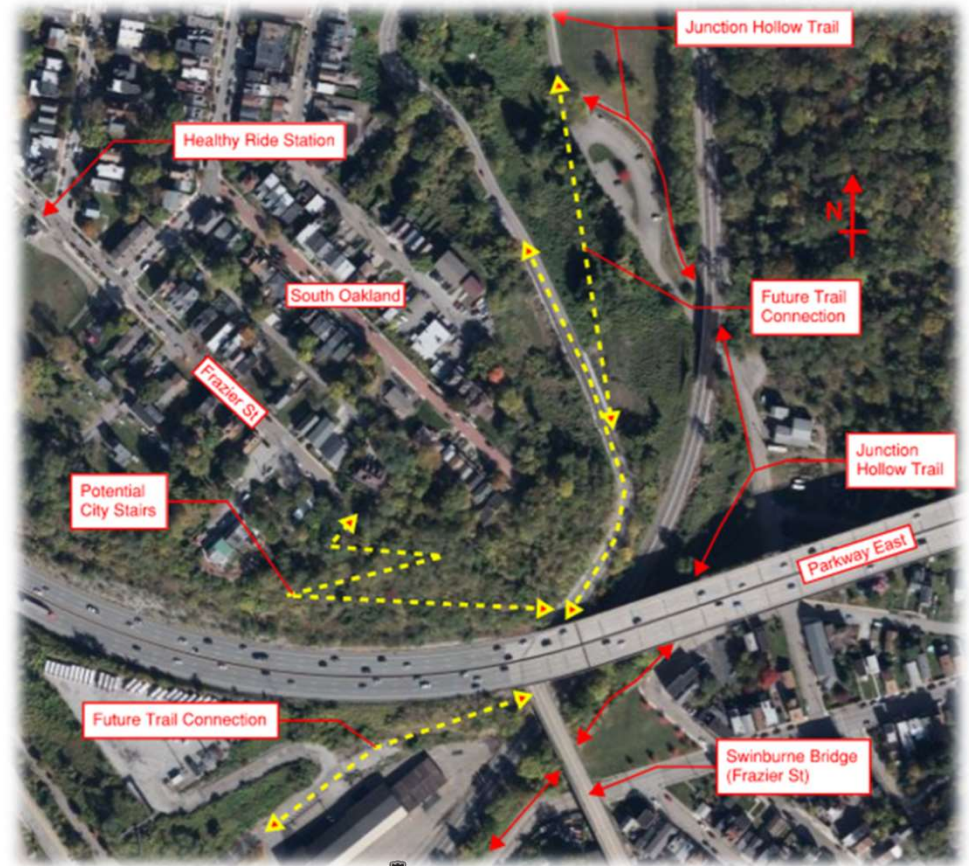




# Project Improvements – Connectivity

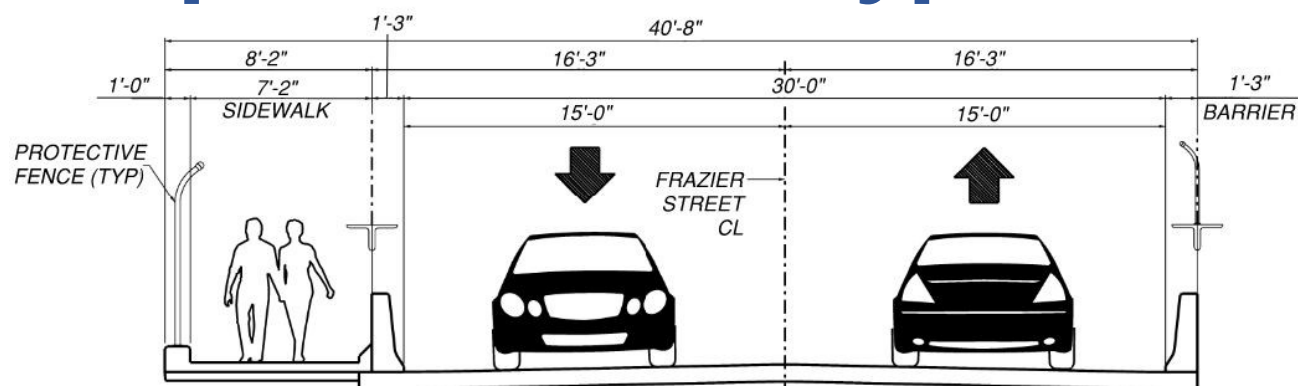
Swinburne Bridge supports future expansion for:

- ✓ Proposed off-street trail connection between the existing Junction Hollow Trail and the Eliza Furnace Trail
- ✓ Improved connectivity between Greenfield Avenue, Sylvan Avenue and up Swinburne Street to Oakland

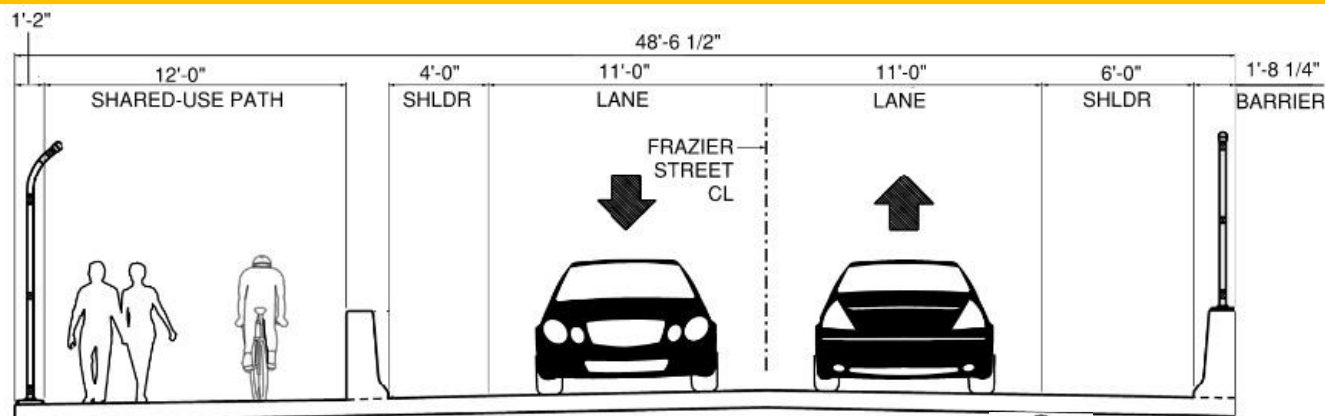


benesch

# Project Improvements – Typical Section



Current Conditions



Proposed Conditions



benesch

# Project Improvements – Bridge Beams



Haunched steel beams  
to mimic the shape of  
the Parkway Bridge



benesch



# Project Improvements – Bridge Supports



Supports to complement the bridge beams and improve both aesthetics and function





# Conceptual Traffic Control During Construction

➤ **Phase 1:** *Demolition of existing bridge and construction of new bridge.*

- Close Swinburne Bridge. (Will be Coordinated with Charles Anderson bridge and Commercial Street Bridge Projects)
- Traffic on Greenfield Avenue and Sylvan Avenue will not be impacted during this phase.
- Pedestrian access on Greenfield Avenue will be maintained.
- Traffic under bridge on Saline St will remain open with occasional 15-minute stoppages.

➤ **Phase 2:** *Greenfield Avenue sidewalk and proposed westbound lane construction.*

- Maintain the detour for Swinburne Bridge.
- Traffic on Greenfield Avenue will be reduced to one lane and controlled with a temporary signal.
- Pedestrian access on Greenfield Avenue will be maintained.

➤ **Phase 3:** *Greenfield Avenue eastbound lane construction and construction of Sylvan Avenue.*

- Maintain the detour for Swinburne Bridge.
- Traffic on Greenfield Avenue will be reduced to one lane and controlled with a temporary signal.
- Sylvan Avenue to be completed under temporary work zones controlled with flaggers.



# Conceptual Traffic Control During Construction



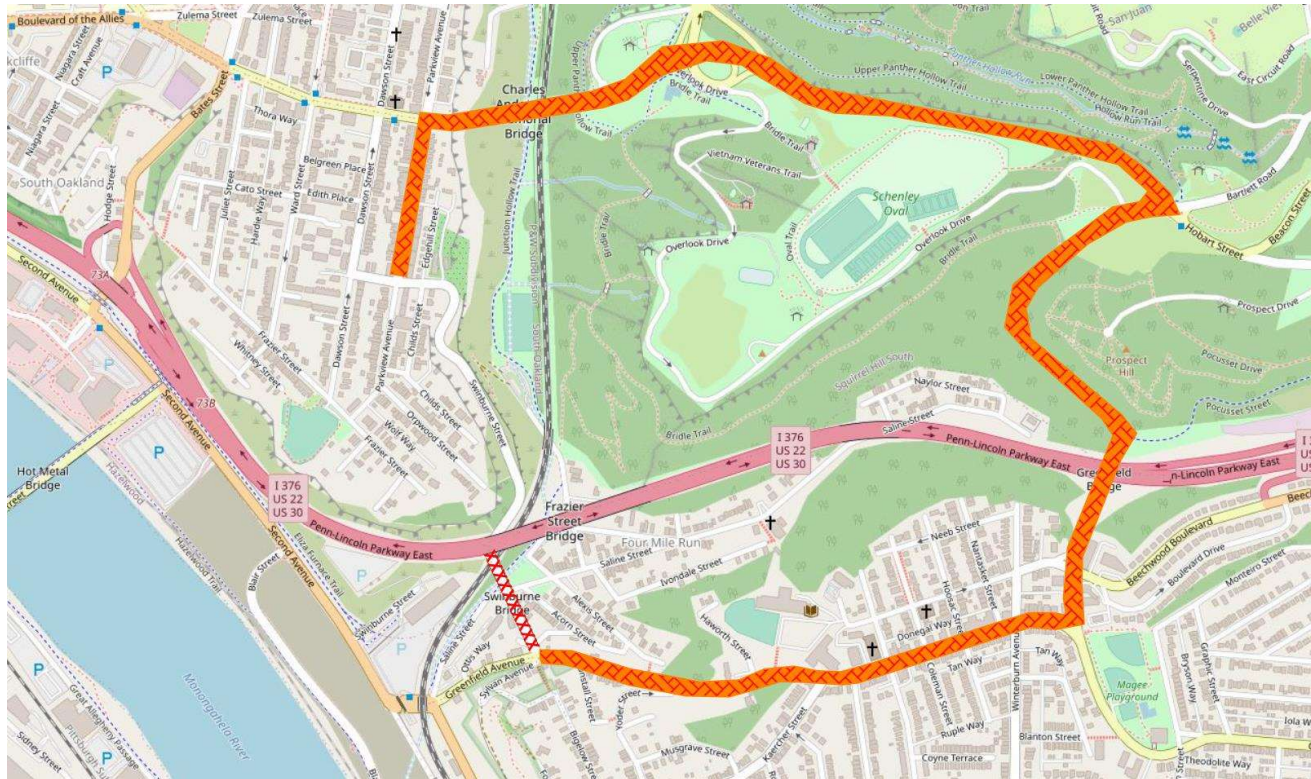
Detour length: 1.45 miles



benesch



# Conceptual Traffic Control During Construction

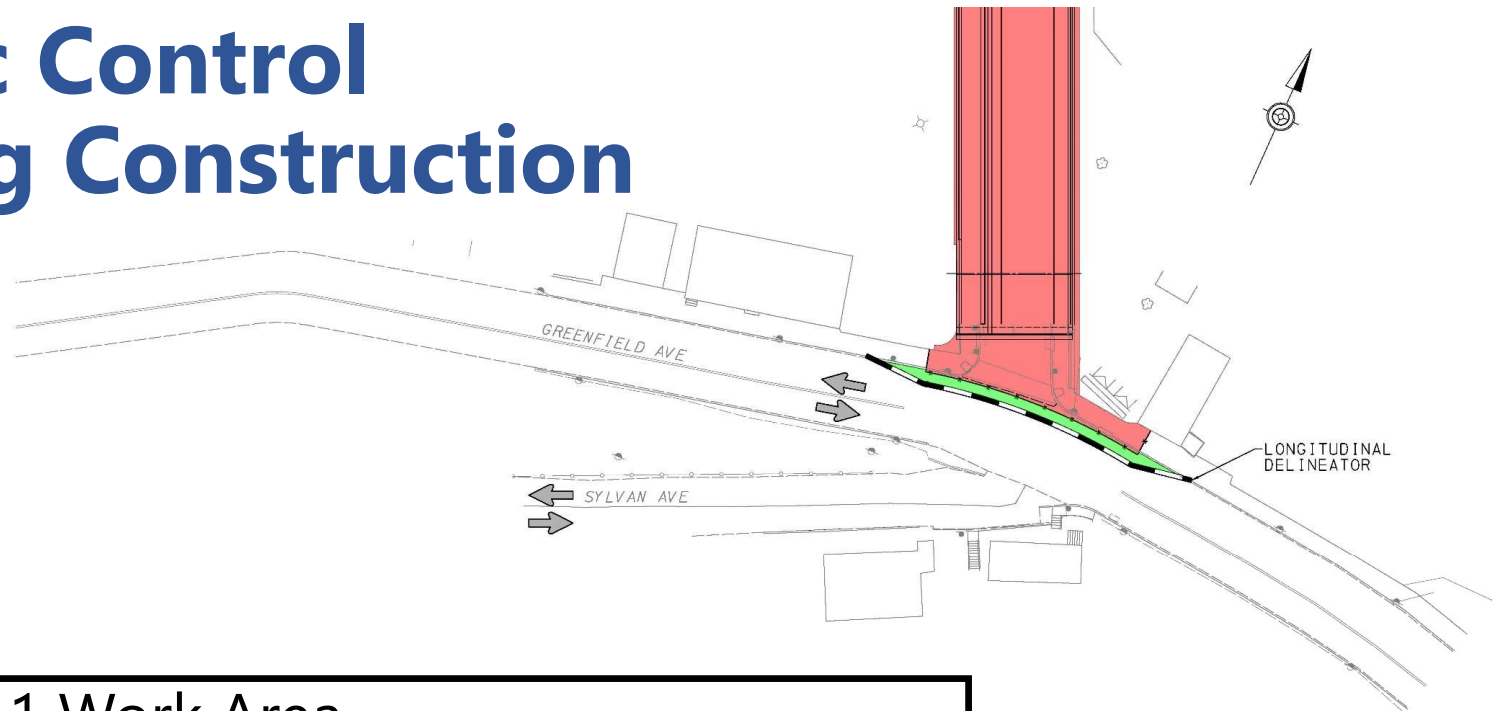


Detour length: 2.30 miles

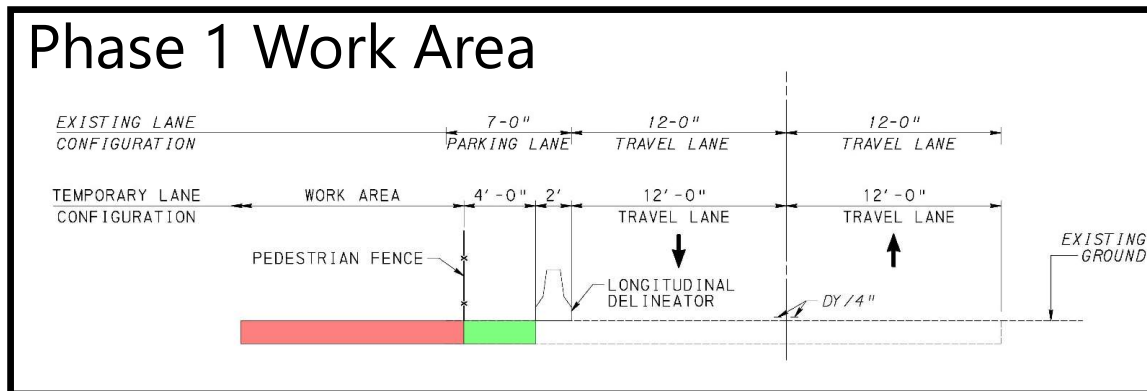


benesch

# Traffic Control During Construction



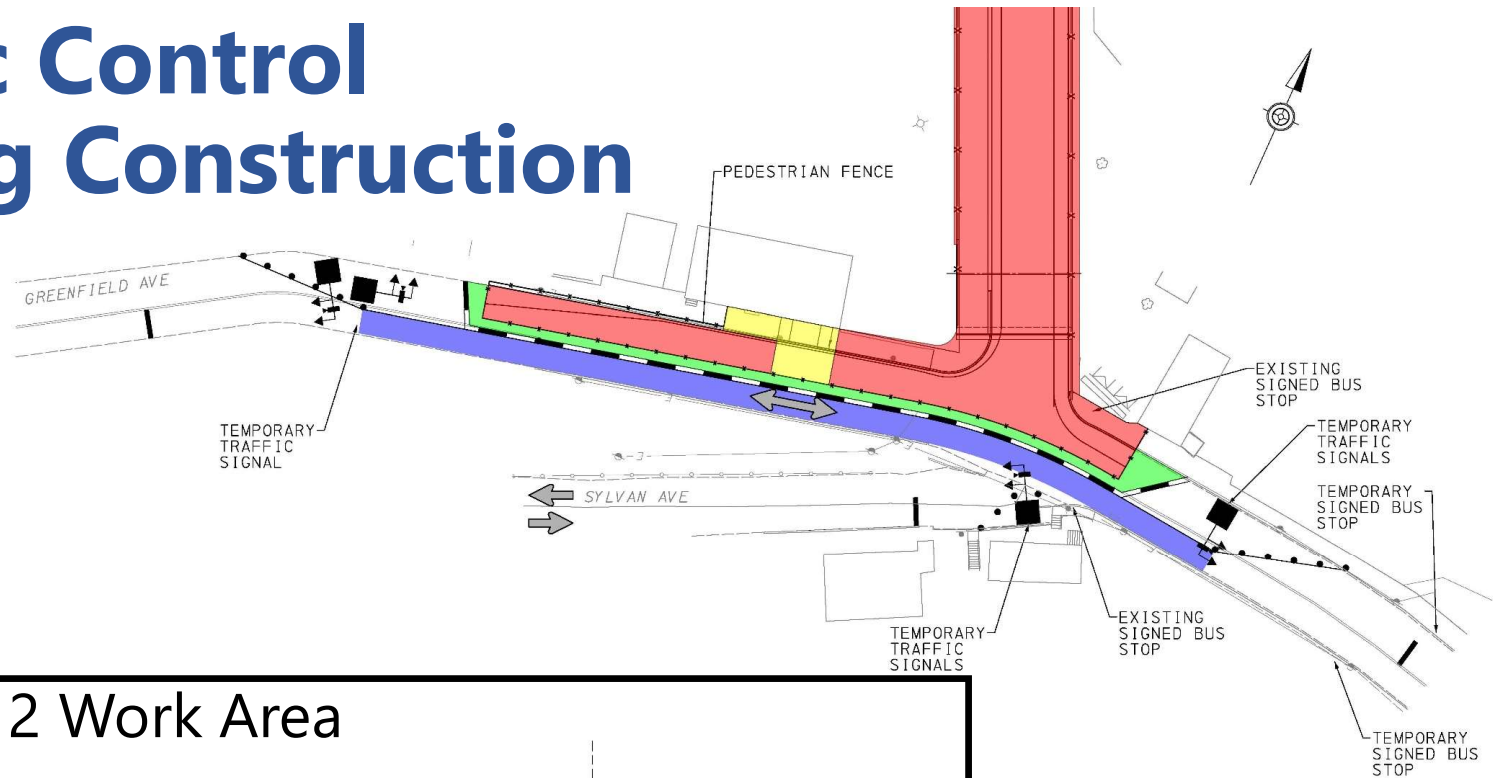
## Phase 1 Work Area



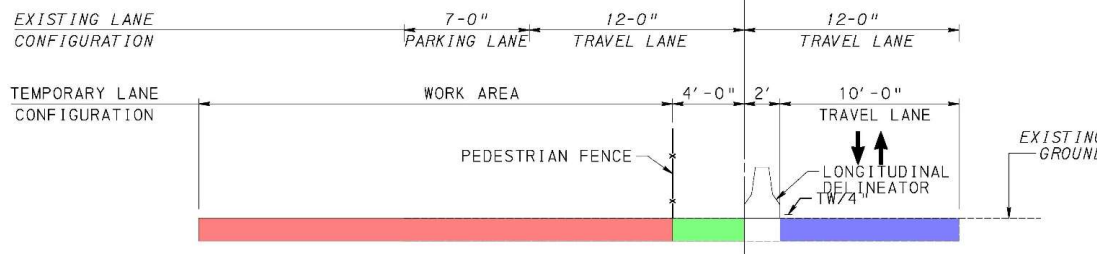
- ACTIVE WORK AREA
- TEMPORARY PEDESTRIAN WALKWAY



# Traffic Control During Construction

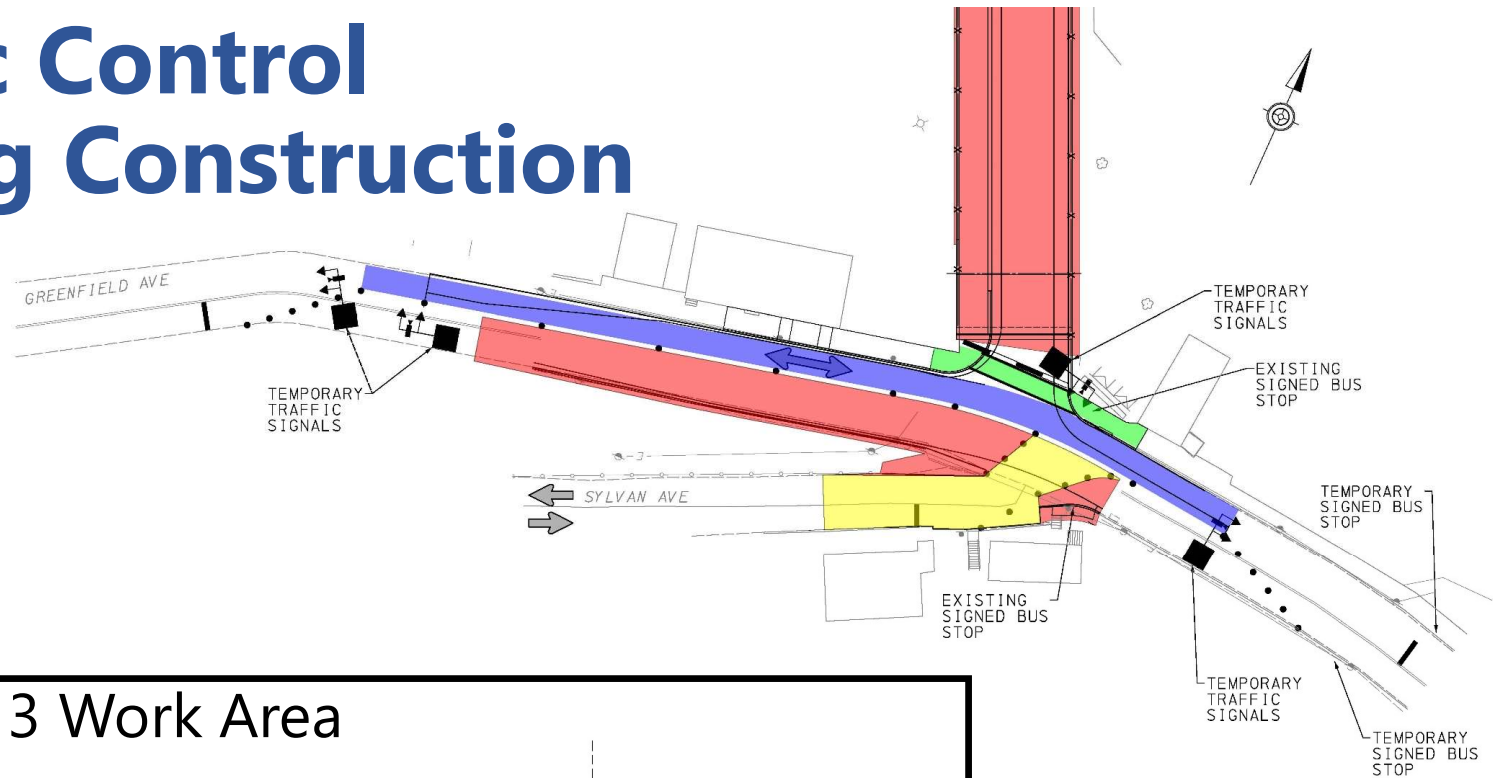


## Phase 2 Work Area

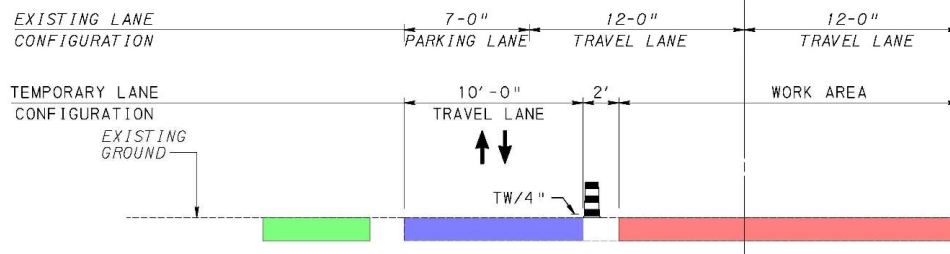


- BI-DIRECTIONAL TRAFFIC, SIGNAL CONTROLLED
- ACTIVE WORK AREA USING FLAGGERS
- ACTIVE WORK AREA
- TEMPORARY PEDESTRIAN WALKWAY

# Traffic Control During Construction

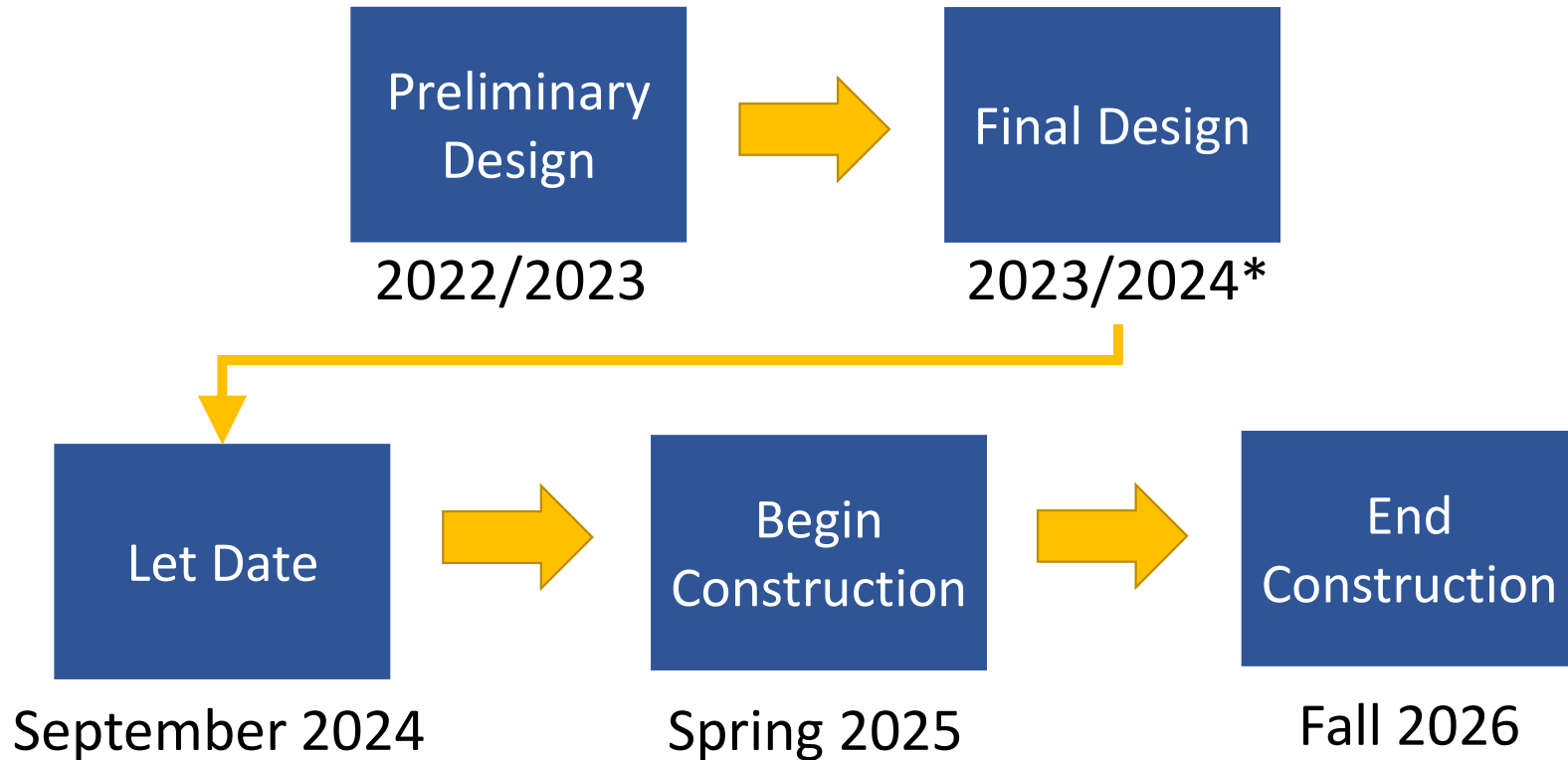


## Phase 3 Work Area



- BI-DIRECTIONAL TRAFFIC, SIGNAL CONTROLLED
- ACTIVE WORK AREA USING FLAGGERS
- ACTIVE WORK AREA
- TEMPORARY PEDESTRIAN WALKWAY

# Time Frame



\*Additional Public Meeting Planned

# What's Next?

- City's Website: <https://engage.pittsburghpa.gov/Swinburne-bridge> will be monitored and updated throughout the design process.
- Additional in-person public meeting to be held during in Final Design and before construction begins.
  - Virtual, or In-Person? Let us know!





# Comments or Questions?

Project Manager: Zachary Workman

Email: [zachary.workman@pittsburghpa.gov](mailto:zachary.workman@pittsburghpa.gov)

Mailing: City of Pittsburgh  
Department of Mobility & Infrastructure  
City County Building, Room 301  
414 Grant Street, Pittsburgh, PA 15219

Phone: 412-255-0869

City's Website: <https://engage.pittsburghpa.gov/Swinburne-bridge>





# Thank You!

**WE APPRECIATE YOUR TIME**