



Stanton Avenue Complete Street Phase I Public Meeting September 26, 2022

Meeting Norms

- Show each other respect
- Save questions for end of presentation
- Raise your virtual hand when you want to speak
- Respect each other's time and share the conversation time with everyone



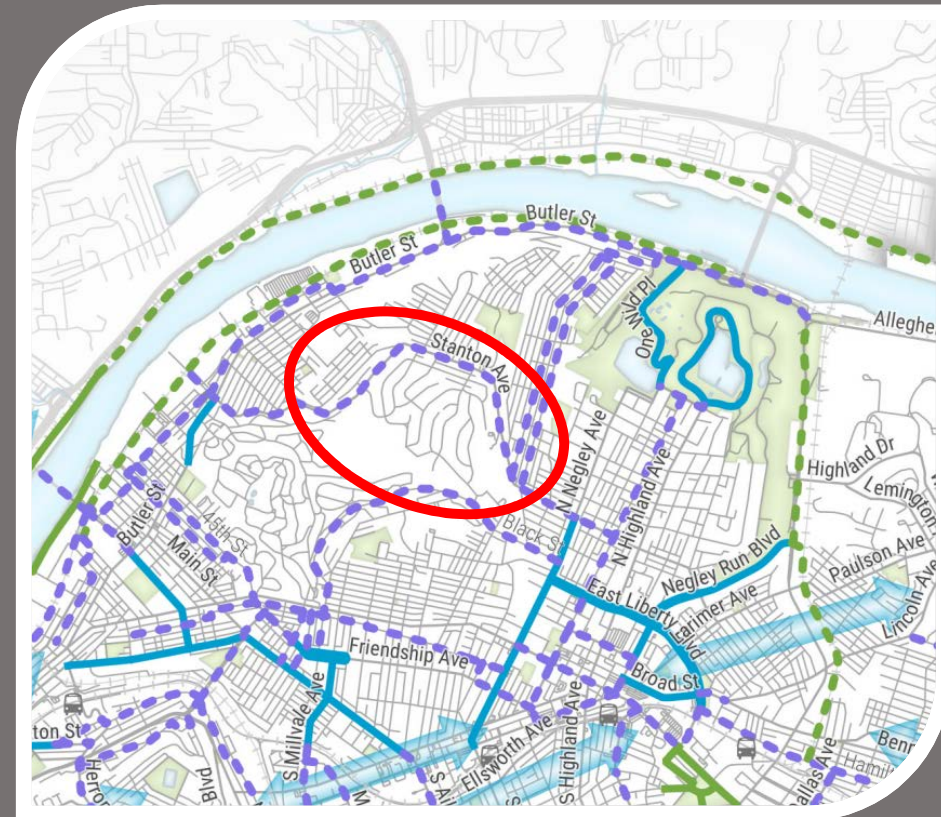
Meeting Agenda and Speakers

1. **Introduction** - *Councilwoman Deb Gross, District 7*
2. **Project Background and Overview** – *Sean Stephens, Project Engineer*
3. **Design Walkthrough** – *Mike Maloch, Municipal Traffic Engineer*
4. **Q&A, Comments** – *Rebekkah Ranallo, Neighborhood Services Manager and Emily Bourne, Communications Specialist*

Interpreters, Dan Conley and Nicholas Miller

Project History

- Capital Budget requests for Stanton Ave bike facility in 2015 & 2016
- Stanton Avenue named on Bike(+) Plan (2019) and project included in MoveForward program (2020-2021)
- Traffic calming application submitted on 9/15/2020 with petition and letter of support from PPS & Sunnyside Elementary
- June 2021 former staff attended Stanton Heights community meeting to discuss traffic safety issues and concepts
- March 2022 community groups presented 'Stanton Ave Bike/Ped Safety Meeting' with Councilwoman Gross office



Bike (+) Plan, 2020

Project Scope

- Phase I is between McCandless (lower) and Chislett
- Integrated Complete Street project
 - Bike(+) Plan
 - Traffic calming application & requests
- Additional phases



Project extents shown in blue

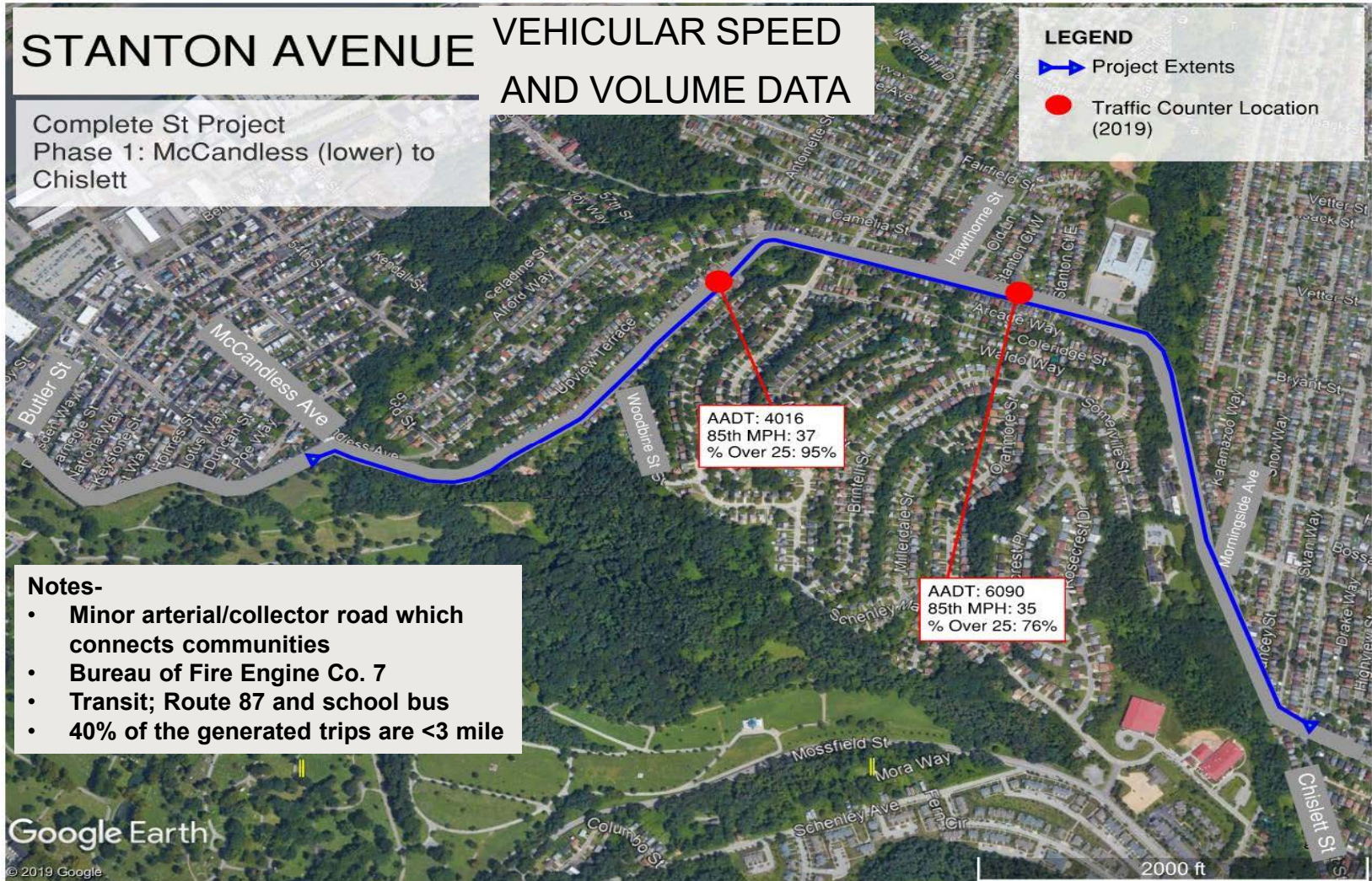
STANTON AVENUE

VEHICULAR SPEED AND VOLUME DATA

Complete St Project
Phase 1: McCandless (lower) to
Chislett

LEGEND

- Project Extents
- Traffic Counter Location (2019)



Crash History – Spatial Analysis



Zone Number	Number of Crash
Zone 1	7
Zone2	6
Zone3	8
Zone 4	10
Zone 5	9
Zone 6	5
Zone 7	6

Stanton Ave Climbing Lanes and Traffic Calming

Complete St Project
Phase 1: McCandless (lower) to
Chislett

LEGEND

-  Bike Climbing Lane on Uphill Side
-  Pedestrian Improvement
-  Curve Warning
-  Speed Cushion



Speed Cushions

- Operates like a speed hump for all drivers except emergency responders
- Cutouts or slots allow EMS to pass unimpeded
- Slot sizing/spacing designed to fit Pittsburgh's standard emergency vehicles
- Four (4) proposed



Stanton Ave Climbing Lanes and Traffic Calming

Complete St Project
Phase 1: McCandless (lower) to
Chislett

LEGEND

-  Bike Climbing Lane on Uphill Side
-  Pedestrian Improvement
-  Curve Warning
-  Speed Cushion



Google Earth

© 2019 Google

10/11/2022

10

Bicycle Climbing Lanes

- Single bike lane in uphill direction
- Downhill is shared condition

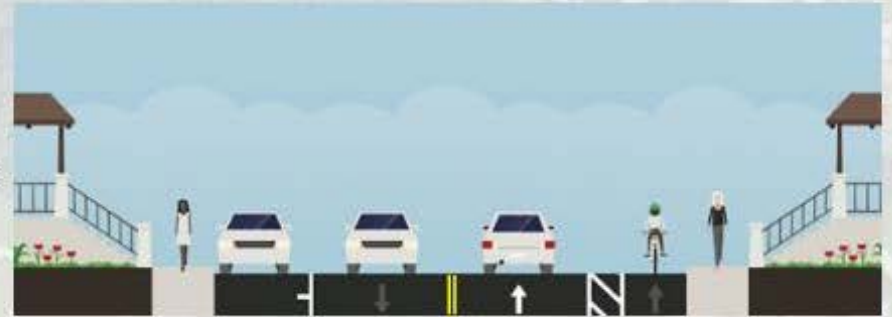


Example of Climbing Lane

Typical Section - Existing Conditions:



Typical Section - Proposed Conditions:



Cross-section looking uphill

10/11/2022

Stanton Avenue Complete Street Phase I

11

Parking Impacts

- Parking consolidation to one side of street
 - Parking utilization is low
 - Driveways and garages are present

10/11/2022



Pedestrian Improvements

- Curb extensions
- Hi-vis crosswalks
- Bus stop locations prioritized
- Morningside intersection realigned with paint and bollard
 - Gateway treatment
 - Opportunity for public art or landscaping



Curve Warning

- SLOW curve arrows in pavement markings
- Transverse markings
 - Provides advance warning and caution to drivers
- Coupled with signage



10/11/2022



Stanton Avenue Complete Street Phase I

14

Construction Timeline

- **Intention for mid-October 2022 installation***
- **Construction expected to take two weeks**
 - **First phase – speed cushion construction**
 - **Second phase – pavement marking work**
 - ***Third phase – concrete ramp work to take place spring 2023**
- **Engage page to be updated once date is set**
- **Subject to change based on weather**



10/11/2022

Thank You!
Comments/Questions?

Contact: neighbor@pittsburghpa.gov