



S Dallas Ave, Forbes Ave & Beechwood Blvd Safe Connections

Design and Implementation
Update
October 12, 2022

Introductions

Jake Pawlak,
Deputy Mayor

Stephanie Gagne,
Executive Assistant to Deputy Mayor Jake Pawlak

Maria Montano,
Press Secretary

Rebekkah Ranallo,
Neighborhood Services Manager

Chrisarah Johnson,
Community Liaison

Jessica Farrell,
Neighborhood Services Coordinator

Kim Lucas,
Director, Department of Mobility and Infrastructure

Mike Maloch,
Municipal Traffic Engineer, Department of Mobility and Infrastructure

Paige Anderson,
Project Engineer, Department of Mobility and Infrastructure

Katy Sawyer,
City Consultant, Senior Engineer, Toole Design Group



Meeting Norms

- Show each other respect
- Save questions for end of presentation
- Respect each other's time and share the conversation time with everyone
- Raise your hand when you want to speak
 - Joining by phone?
 - *6 - Toggle mute/unmute
 - *9 - Raise hand
- Place your question in the Chat feature
- Closed Captions is enabled – click on the button at the bottom of your screen to activate
- Technical difficulties? Chat "City of Pittsburgh"



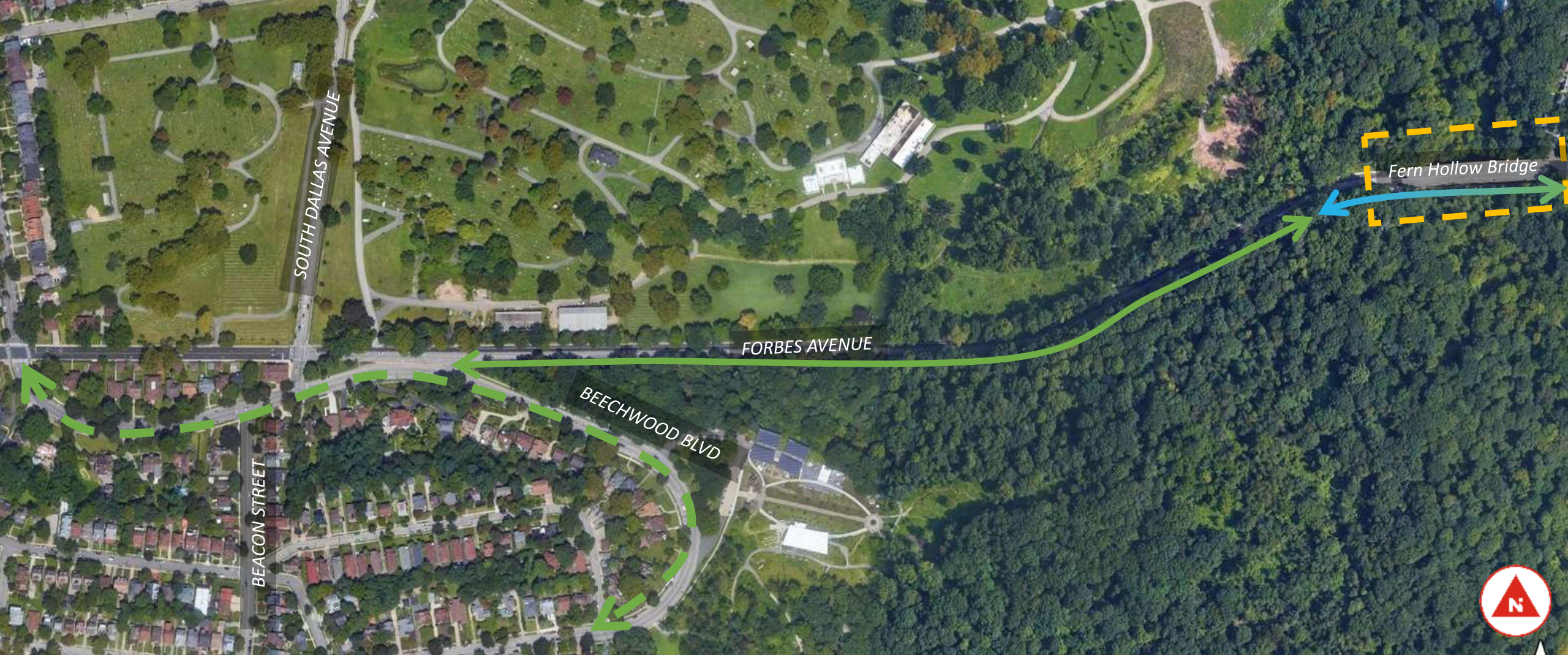
Where We're At

- August 23, 2022: Mayor's Listening Session
 - Over 250 people in attendance
 - Background data: crash history, bike & pedestrian network analysis, impacts of new bridge & needs identified
 - Nearly 150 individual comments compiled & analyzed by DOMI staff
- Today: Design & Implementation Update

Project Engage Page:




<https://engage.pittsburghpa.gov/complete-streets/s-dallas-ave-forbes-ave-beechwood-blvd-safe-connections>





Project Area

Legend

-  Existing Bike Facilities
-  Bridge Shared Use Path
-  Proposed Bike Facility



Project Area

Legend

- Existing Bike Facilities
- Proposed Bike Facility

Project Goals

- *To implement a **quick build** solution to the gap in the bicycle network created by the Fern Hollow Bridge replacement that is...*
- *Forward compatible with planned traffic projects in the area and...*
- *Addresses **safety issues** for all users to the greatest extent possible*

Listening Session - What We Heard

Existing Issues:

- Aggressive driving at Beechwood/Beacon/Dallas (19)
- Speeding on Forbes (12)
- Unsafe crossings across Beechwood at Beacon (7)

Listening Session - What We Heard

Concerns for Future Conditions:

- Robust protection for proposed cycle track on Forbes (13)
- Bicycle and pedestrian conflicts at Forbes and Dallas (16)
 - Requests to close Dallas between Forbes & Beechwood to some or all motor vehicle traffic (14)
- Requests to close slip ramp (9)



Traffic Analysis



Traffic Analysis

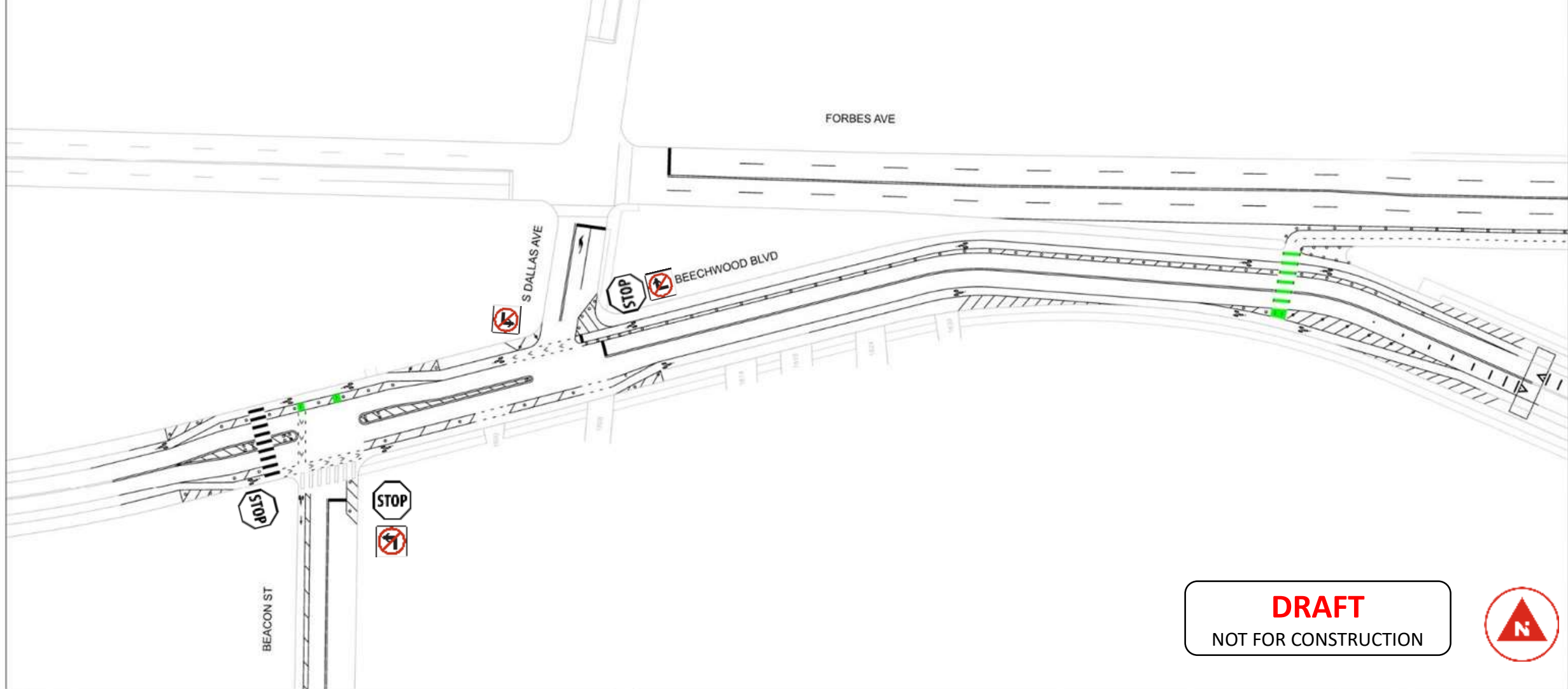
Final Operations – Close Slip Ramp

Turn restrictions at Beacon, Dallas, and Beechwood Approaches

10/12/2022

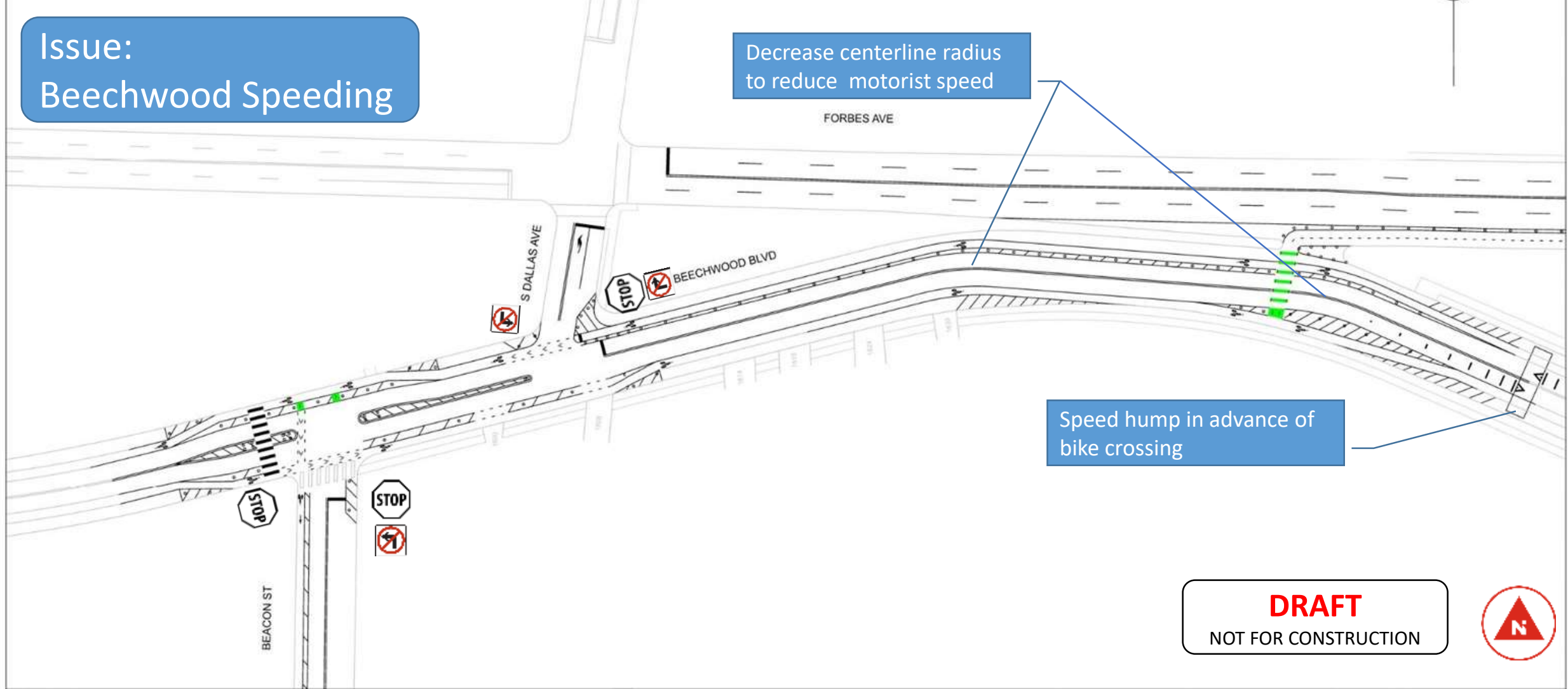
Design Update

15



Design

Issue: Beechwood Speeding



Design

Issue: Pedestrian Crossing at Beacon and Beechwood

Median Islands
Reduce travel lane widths

New ADA ramps:
Summer 2023

Restrict left turn onto Beacon
Street to prioritize pedestrian
crossing

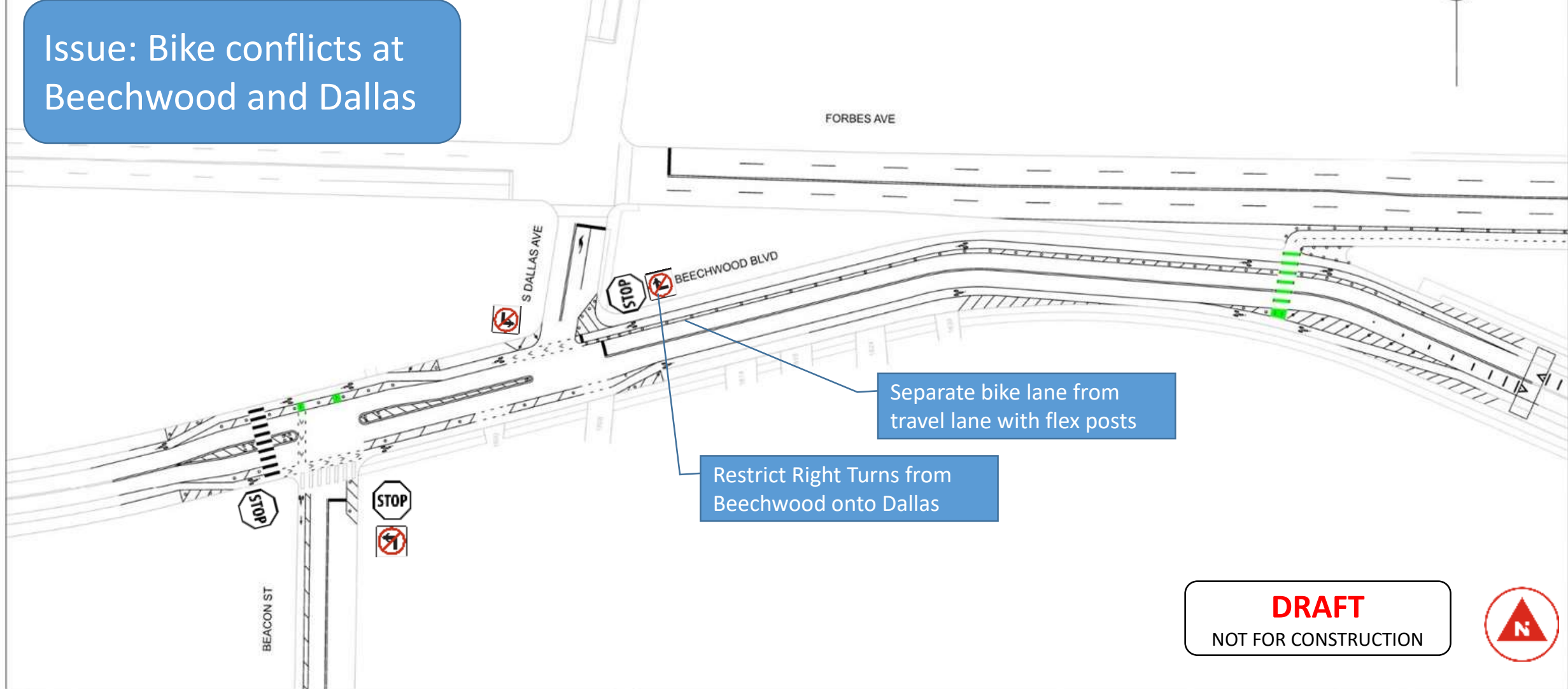
DRAFT

NOT FOR CONSTRUCTION



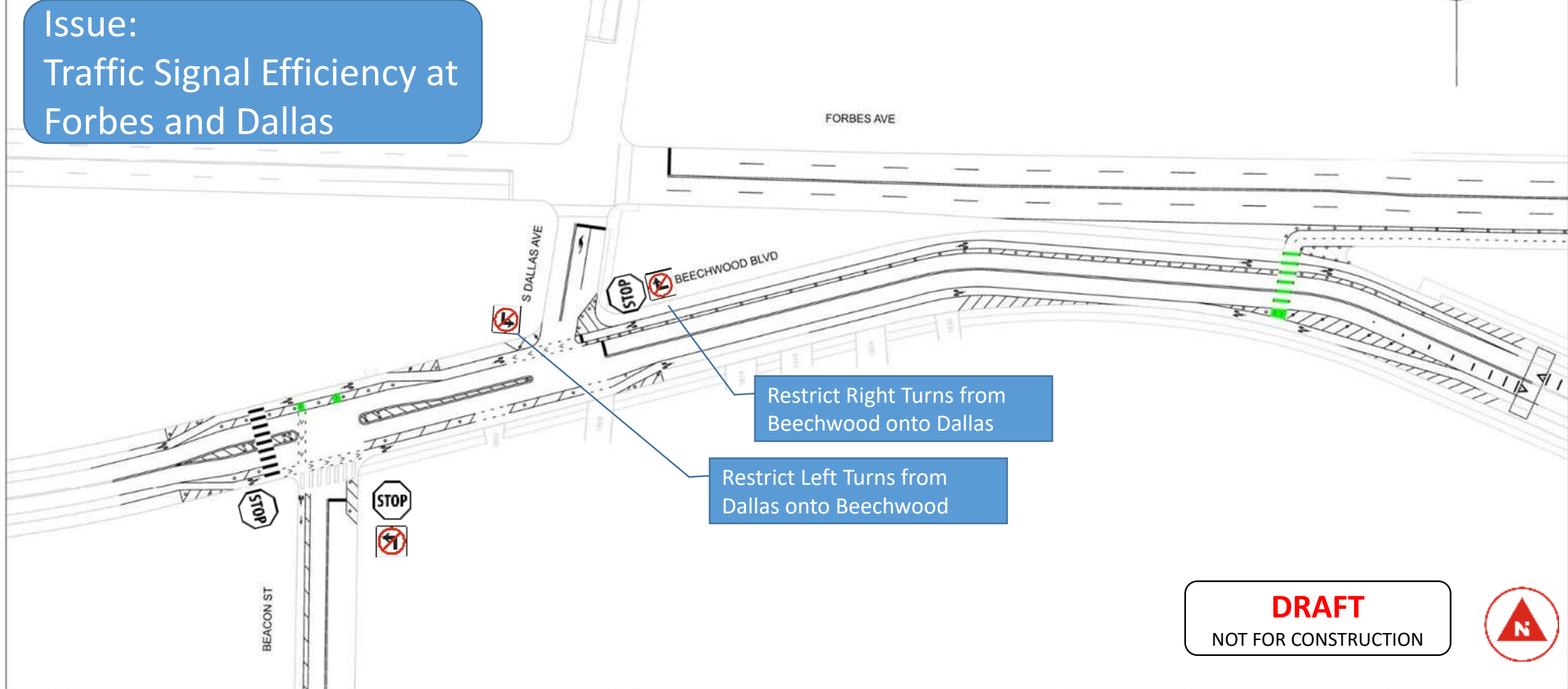
Design

Issue: Bike conflicts at Beechwood and Dallas



Design

Issue:
Traffic Signal Efficiency at
Forbes and Dallas

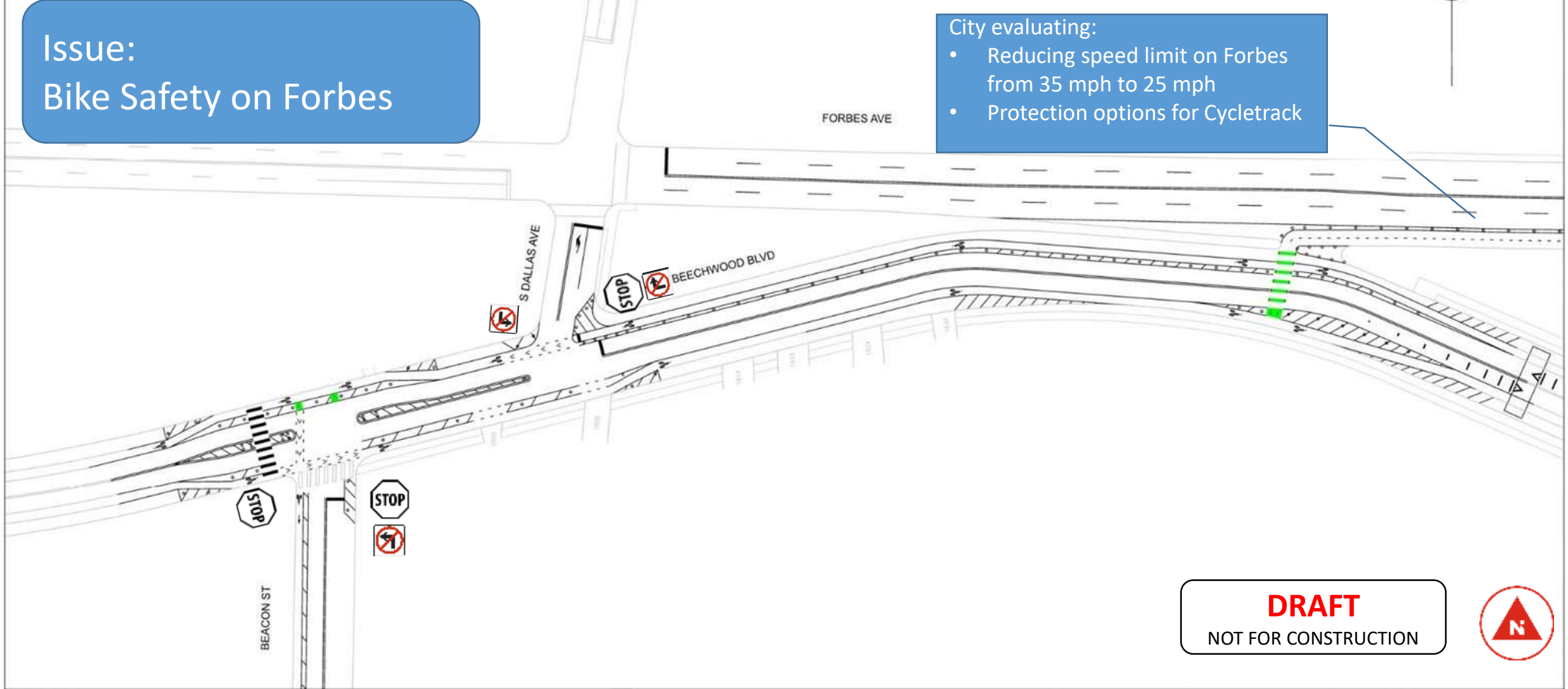


Design

Issue: Bike Safety on Forbes

City evaluating:

- Reducing speed limit on Forbes from 35 mph to 25 mph
- Protection options for Cycletrack

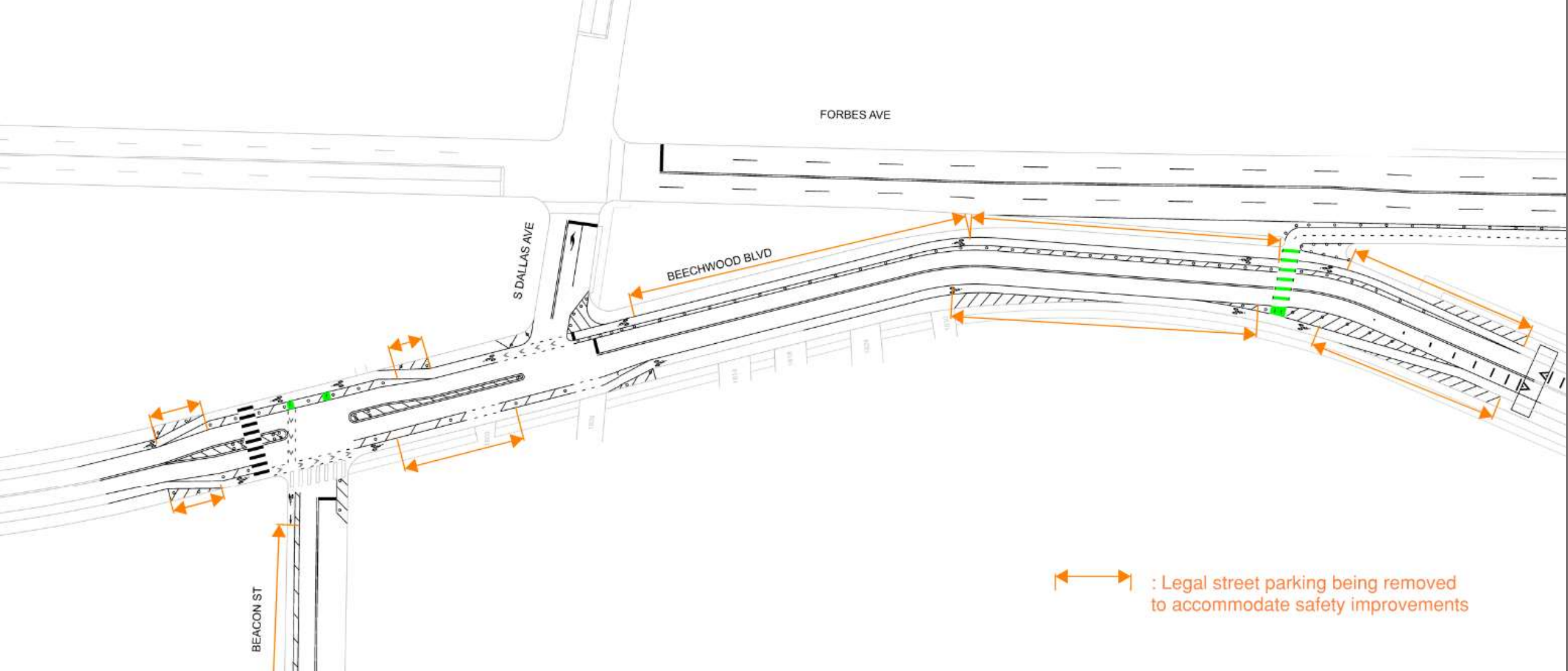


DRAFT

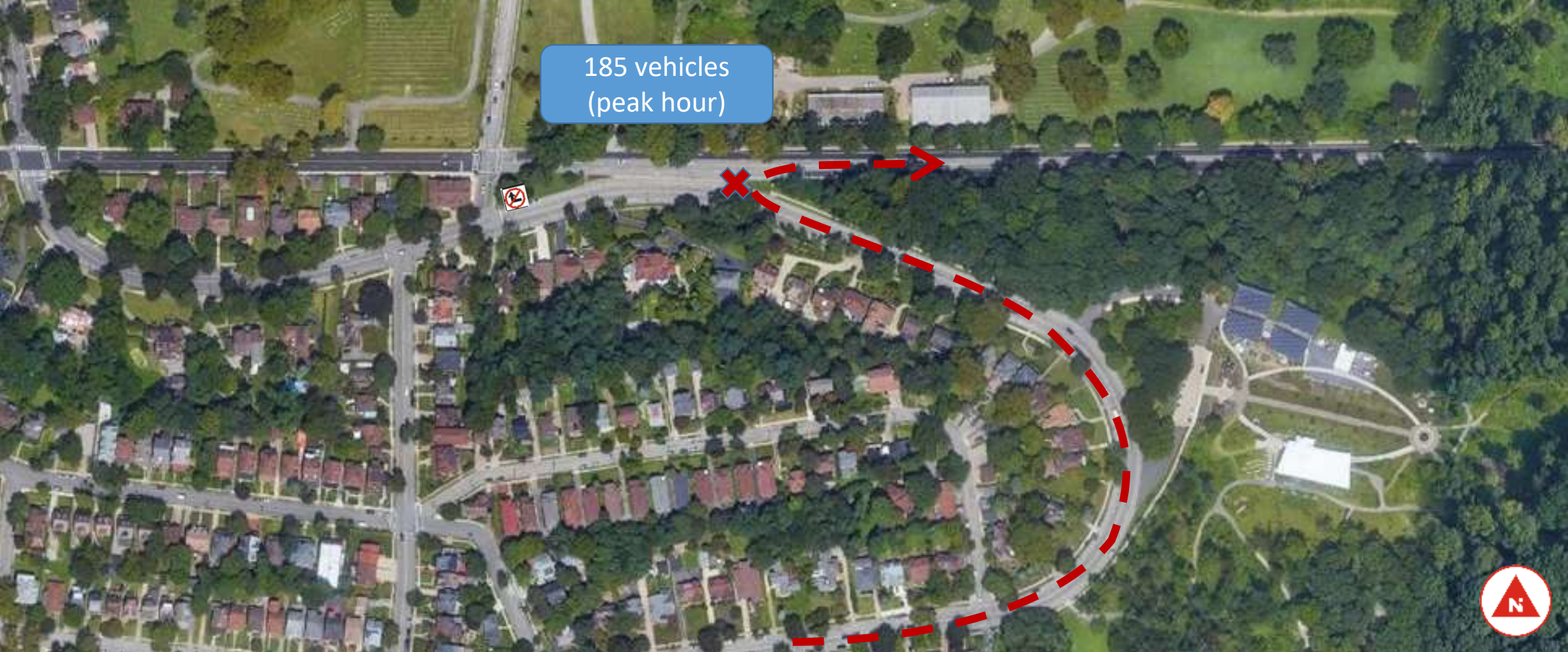
NOT FOR CONSTRUCTION



Design



Design: Implications to Legal Street Parking



Travel Time Impacts




Slip Ramp to Eastbound Forbes

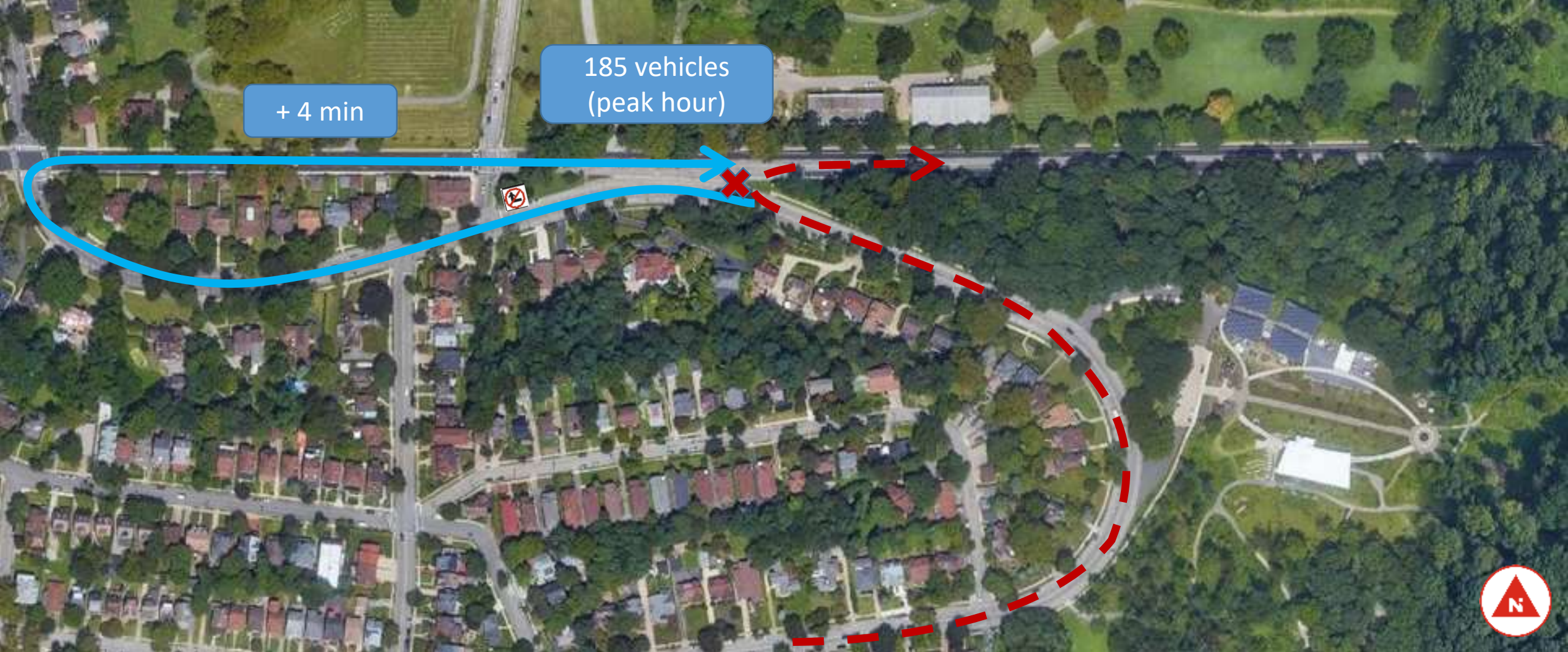
No Right Turn from Beechwood to Dallas

10/12/2022

Design Update

Legend

-  Pre-Bridge Closure Route
-  Pre-Bridge Closure Route (Impacted by Closure)
-  Post-Bridge Opening



Travel Time Impacts




Slip Ramp to Eastbound Forbes

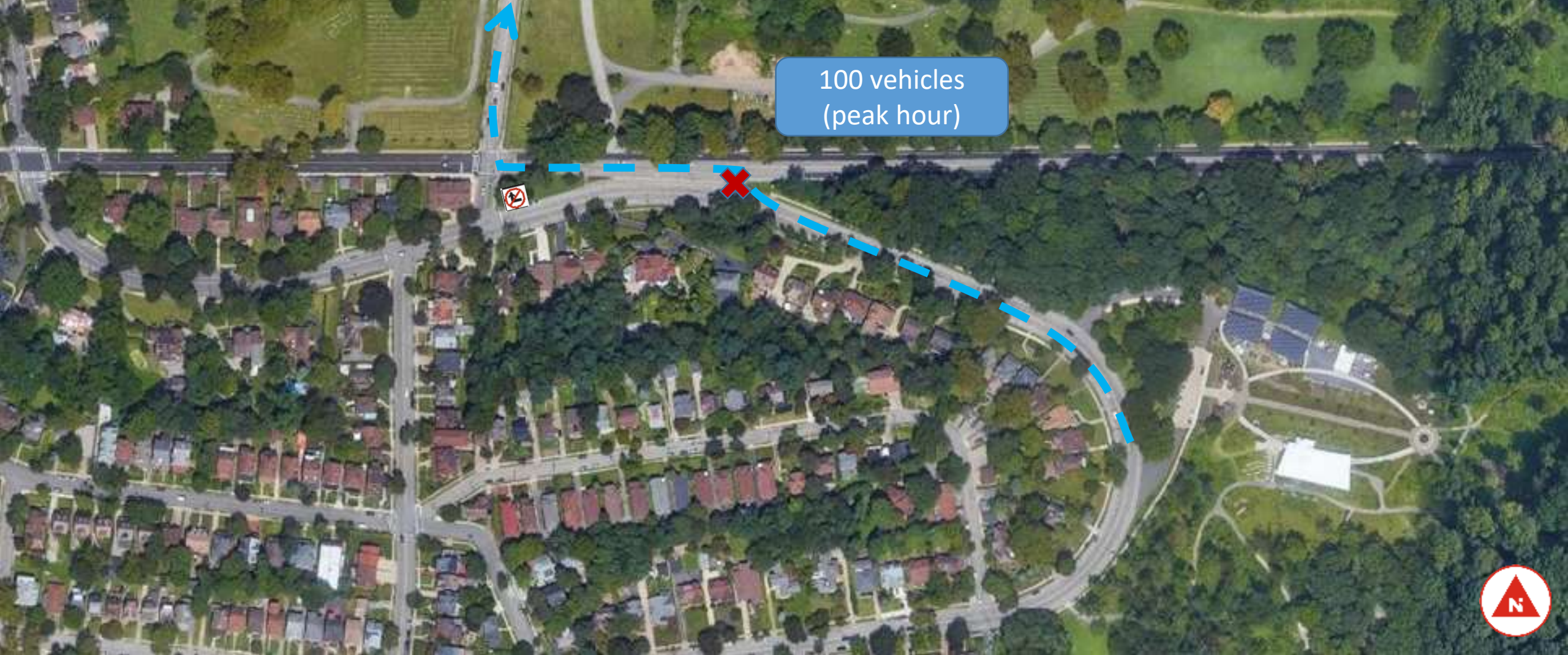
No Right Turn from Beechwood to Dallas

10/12/2022

Design Update

Legend

-  Pre-Bridge Closure Route
-  Pre-Bridge Closure Route (Impacted by Closure)
-  Post-Bridge Opening



Travel Time Impacts




Slip Ramp to Eastbound Forbes

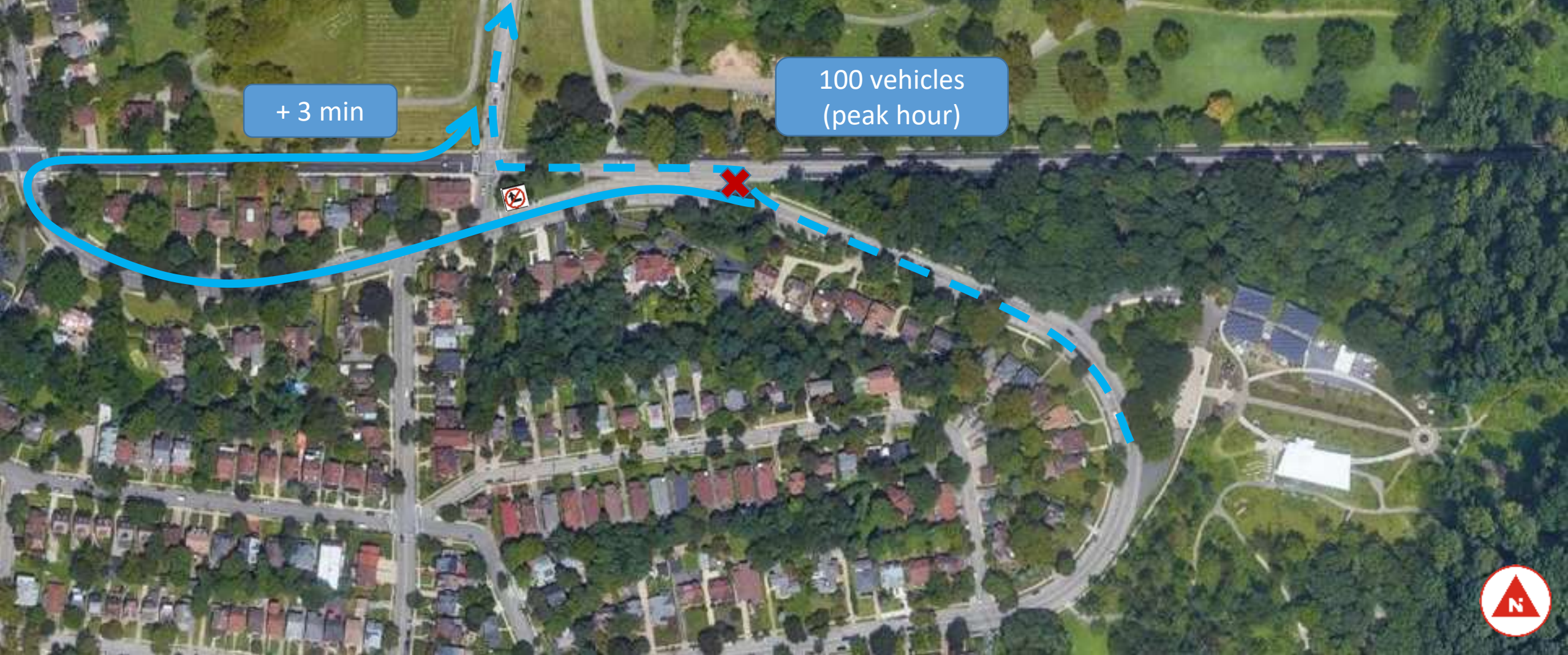
No Right Turn from Beechwood to Dallas

10/12/2022

Design Update

Legend

-  Pre-Bridge Closure Route
-  Pre-Bridge Closure Route (Impacted by Closure)
-  Post-Bridge Opening



Travel Time Impacts

Slip Ramp to Eastbound Forbes

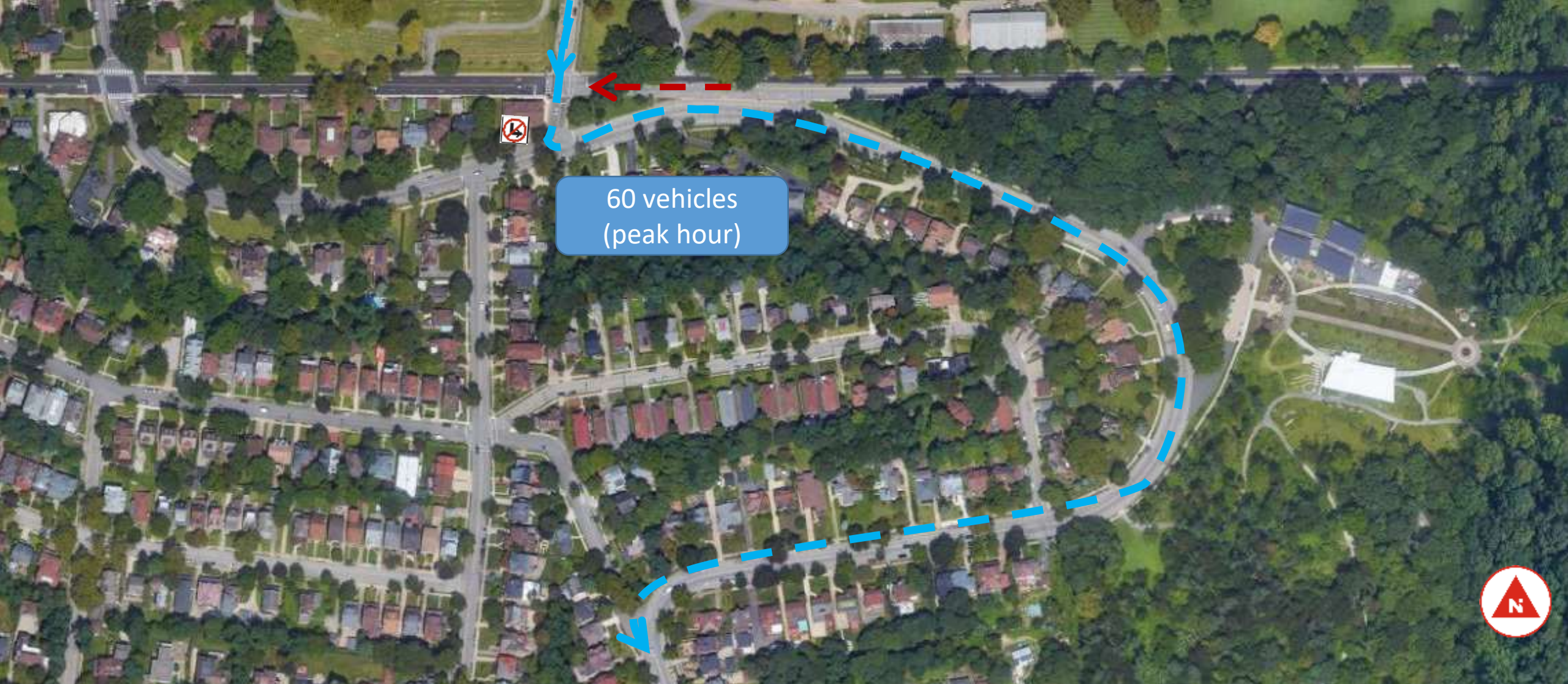
No Right Turn from Beechwood to Dallas

10/12/2022

Design Update

Legend

- Pre-Bridge Closure Route
- Pre-Bridge Closure Route (Impacted by Closure)
- Post-Bridge Opening



Travel Time Impacts

Southbound Dallas to Eastbound Beechwood trips

10/12/2022

Design Update

Legend



Pre-Bridge Closure



Pre-Bridge Closure Trips that
do not occur today



Post-Bridge Opening

- Google maps routes motorists both ways today
- No travel time difference for thru trips (2 min travel time each route)

60 vehicles
(peak hour)

Travel Time Impacts

Southbound Dallas to Eastbound Beechwood trips

10/12/2022

Design Update

Legend



Pre-Bridge Closure



Pre-Bridge Closure Trips that do not occur today



Post-Bridge Opening



- Google maps routes motorists both ways today
- No travel time difference for thru trips (2 min travel time each route)

Up to +3
min (local)

+0 min
(thru)

Travel Time Impacts

Southbound Dallas to Eastbound Beechwood trips

10/12/2022

Design Update

Legend



Pre-Bridge Closure

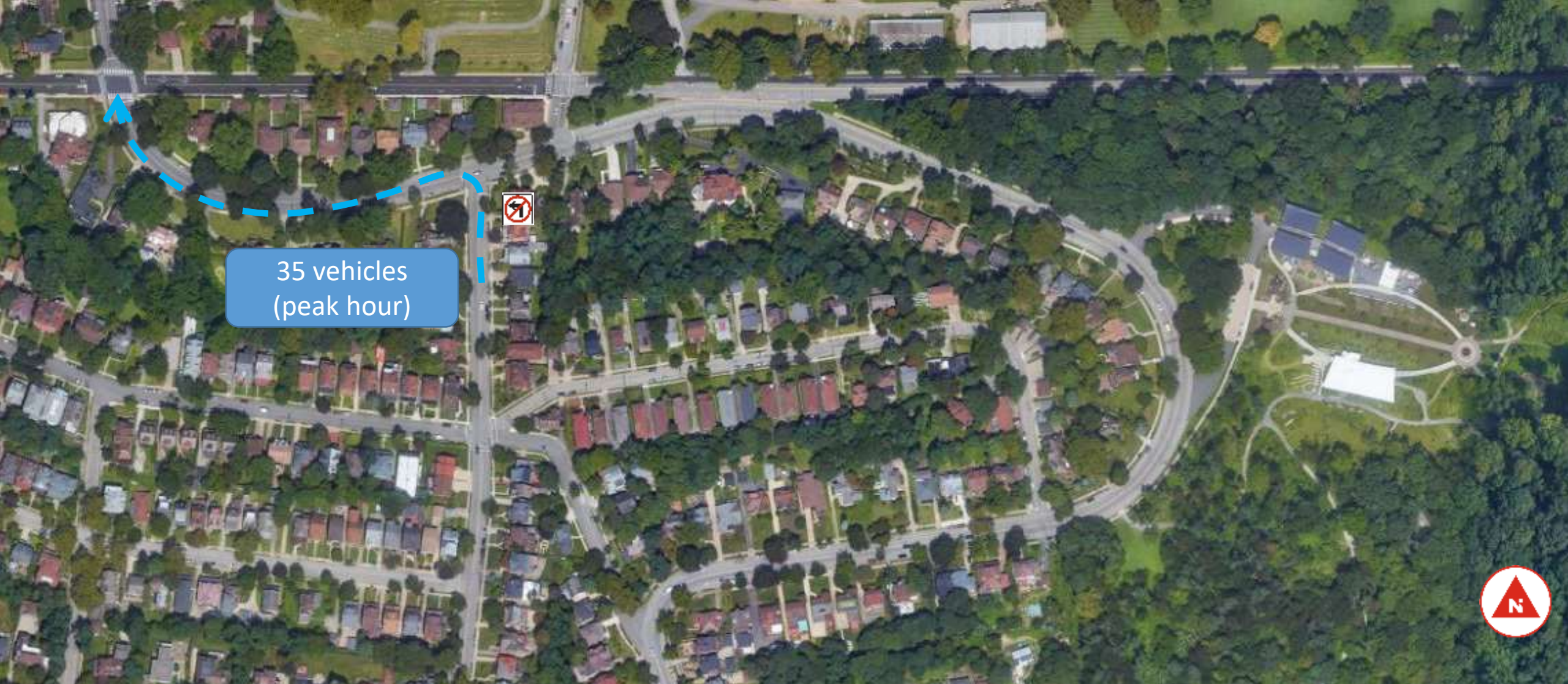


Pre-Bridge Closure Trips that
do not occur today



Post-Bridge Opening





Travel Time Impacts

Northbound Beacon to Westbound Beechwood Trips

10/12/2022

Design Update

Legend



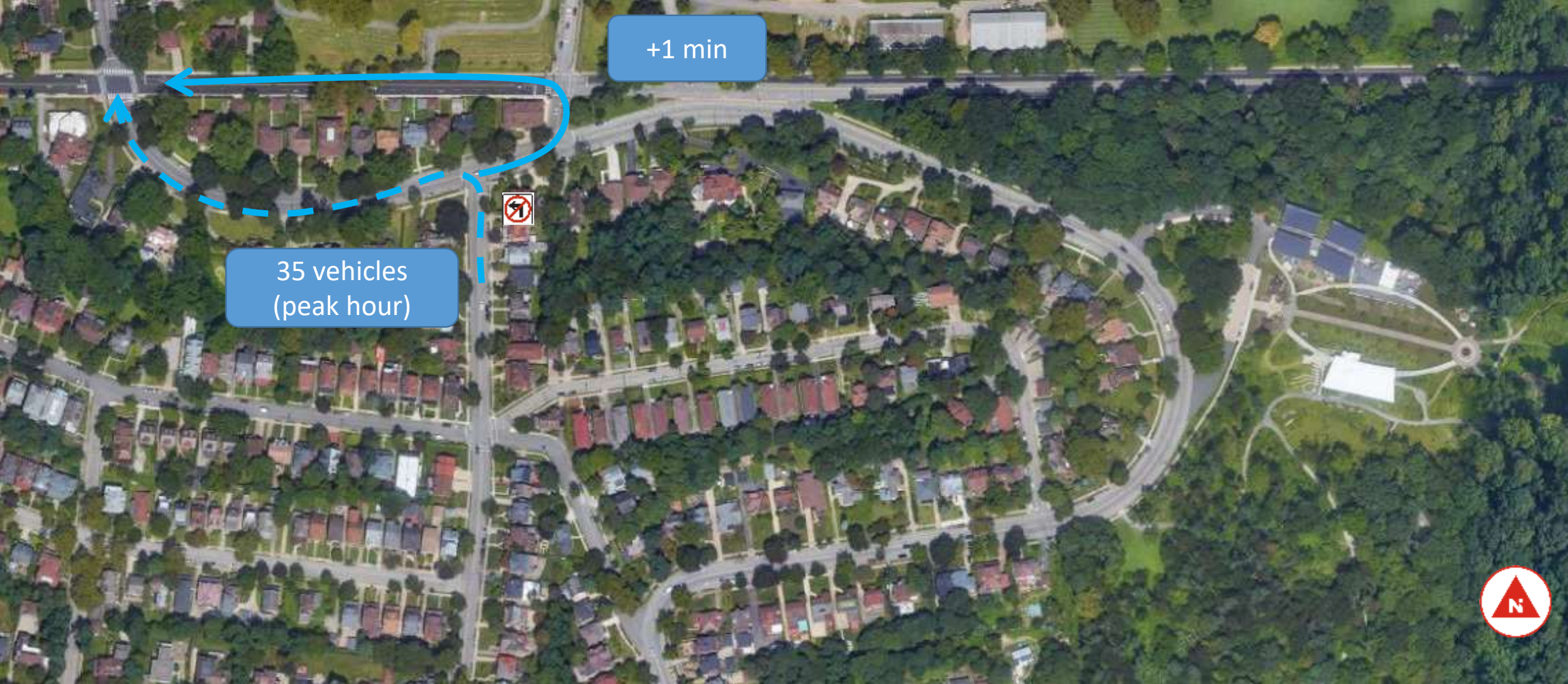
Pre-Bridge Closure



Pre-Bridge Closure Trips that
do not occur today



Post-Bridge Opening



Travel Time Impacts

Northbound Beacon to Westbound Beechwood Trips

Legend



Pre-Bridge Closure



Pre-Bridge Closure Trips that
do not occur today



Post-Bridge Opening

10/12/2022

Design Update

Schedule

Next: City implements operational changes prior to Fern Hollow Bridge Opening

Winter 2022/2023: Fern Hollow Bridge Opening

Spring/Summer 2023: Bicycle Facility on Bridge and Forbes Avenue Opens

Upcoming Related Projects

Summer 2023: Signalized midblock pedestrian crossing west of Fern Hollow Bridge

Fall/Winter 2023: Forbes at Dallas and Beechwood Complex Intersection Analysis Project Determines Long-Term Recommendations

Spring 2024: Construction begins on Forbes at Braddock intersection improvements



Thank You!

Follow these projects:

engage.pittsburghpa.gov/complete-streets

Questions?

Contact neighbor@pittsburghpa.gov