



Sylvan Avenue Trail and Street Rehabilitation

November 30, 2022

Introductions

Lisa Frank,
Chief Operations and Administrative Officer

Felicity Williams,
Deputy Chief of Staff

Kim Lucas,
Director, Department of Mobility and
Infrastructure

Rebekkah Ranallo,
Neighborhood Services Manager

Chrisarah Johnson,
Community Liaison

Mike Panzitta,
Project Manager

Emily Bourne,
Communications Specialist



Presentation Overview

- Meeting Norms
- Goal of this meeting
- Technical Presentation
- More to Come
- FAQs
- Q&A



Meeting Norms

- Show each other respect
- Save questions for end of presentation
- Respect each other's time and share the conversation space with everyone



Why Are We Here?

- Provide an overview of the Sylvan Avenue Trail project
- Provide an update on Sylvan Avenue Trail project changes since April 2022 meeting

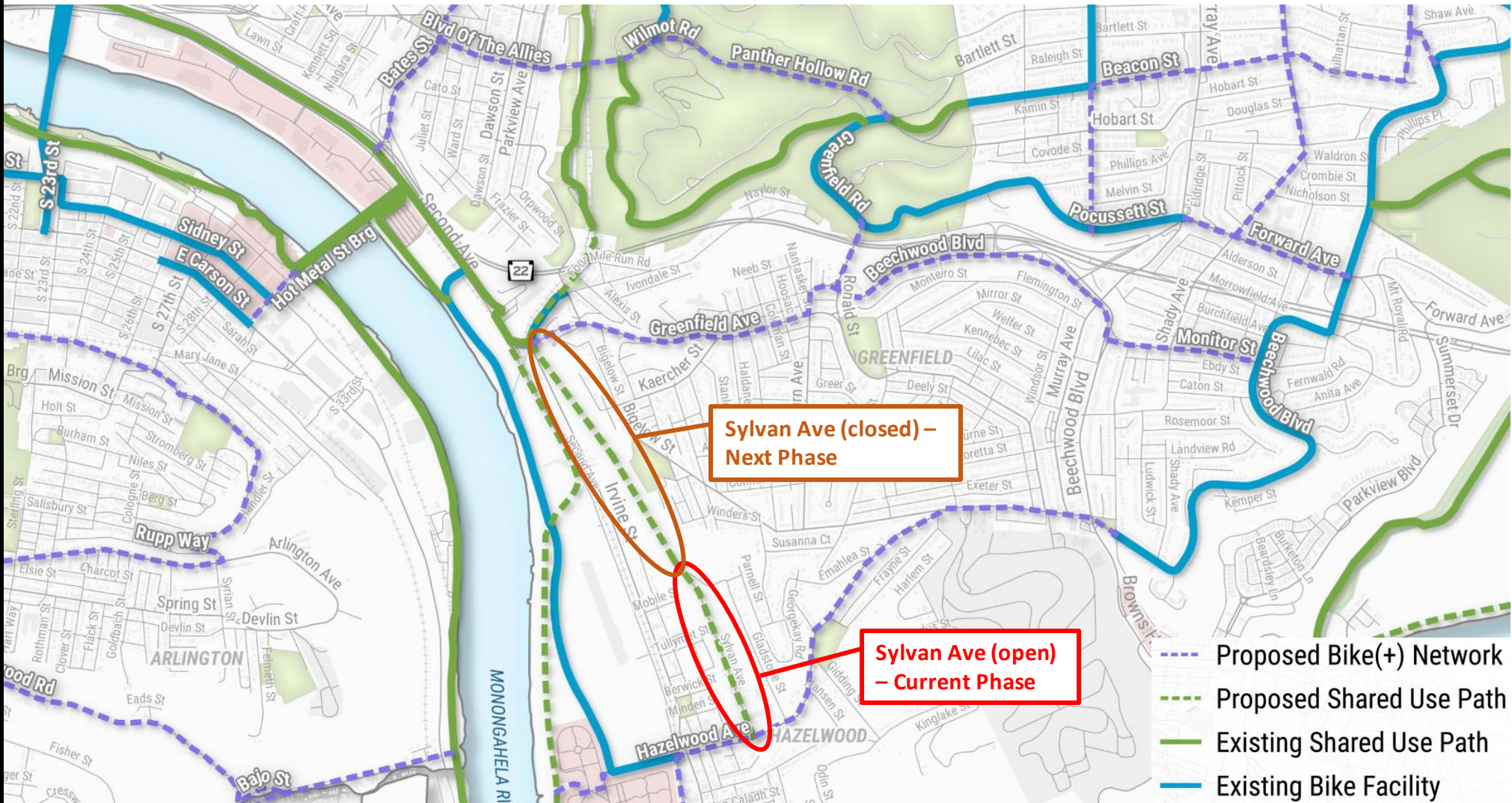


Background

- On-street pedestrian and bicycle improvements to complement trail expansion along currently-closed Sylvan Avenue Greenway and link to Hazelwood neighborhood core.
- Trail expansion identified in Greater Hazelwood Neighborhood Plan as Mobility Priority.
 - *"Ensure that improvements to the Hazelwood Greenway include accessible bicycle trails that can provide a recreational and practical route to help move pedestrians and bicyclists around the neighborhood."*
- Project route identified in City Bike(+) Plan.



Background

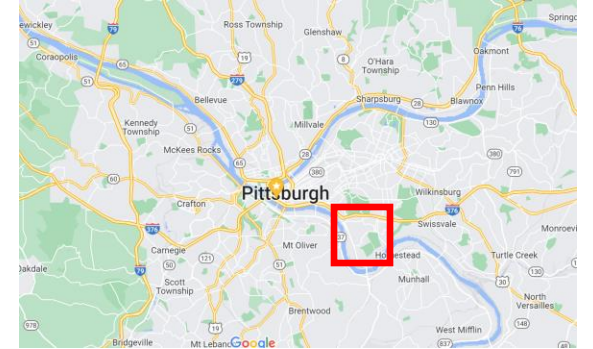
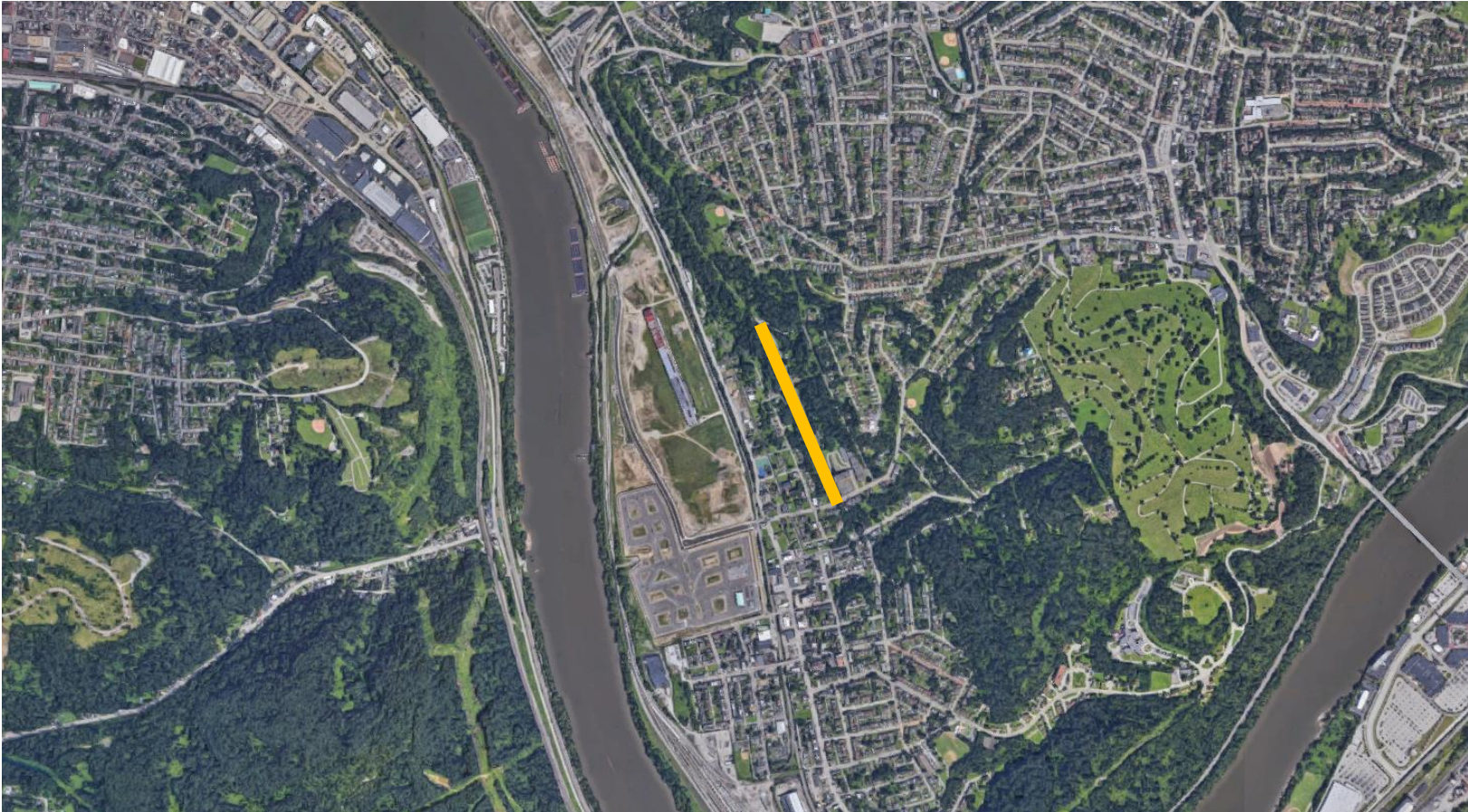


City of Pittsburgh Bike(+) Plan (June 2020) – Sylvan Avenue Trail Portions circled



Project Location

Hazelwood and Greenfield Neighborhoods



Project Limits, Sylvan Avenue from
Hazelwood Ave to Home Rule St



Overview of Changes to Sylvan Avenue

- Repave the street
- Reconstruct sidewalks, driveways, and curbs
- Install signage and pavement markings
- Plant street trees and other landscaping improvements
- Pedestrian safety/traffic calming



Project Updates from Community Feedback

Where will I park if I live on Sylvan?

- No changes to parking along Sylvan Ave.

Can we include pedestrian safety/traffic calming along Hazelwood Avenue?

- Concrete pedestrian island now incorporated into the design.

I'm not sure how I feel about these bike lanes...

- Instead of previously proposed "advisory bike lanes", "neighborway" design for entire stretch.



But What *IS* a Neighborway?



- Slow speed and low-traffic residential streets
- Designed to be a low-stress route for all users
 - Traffic calming
 - Signage and pavement markings
 - Other treatments



Examples:



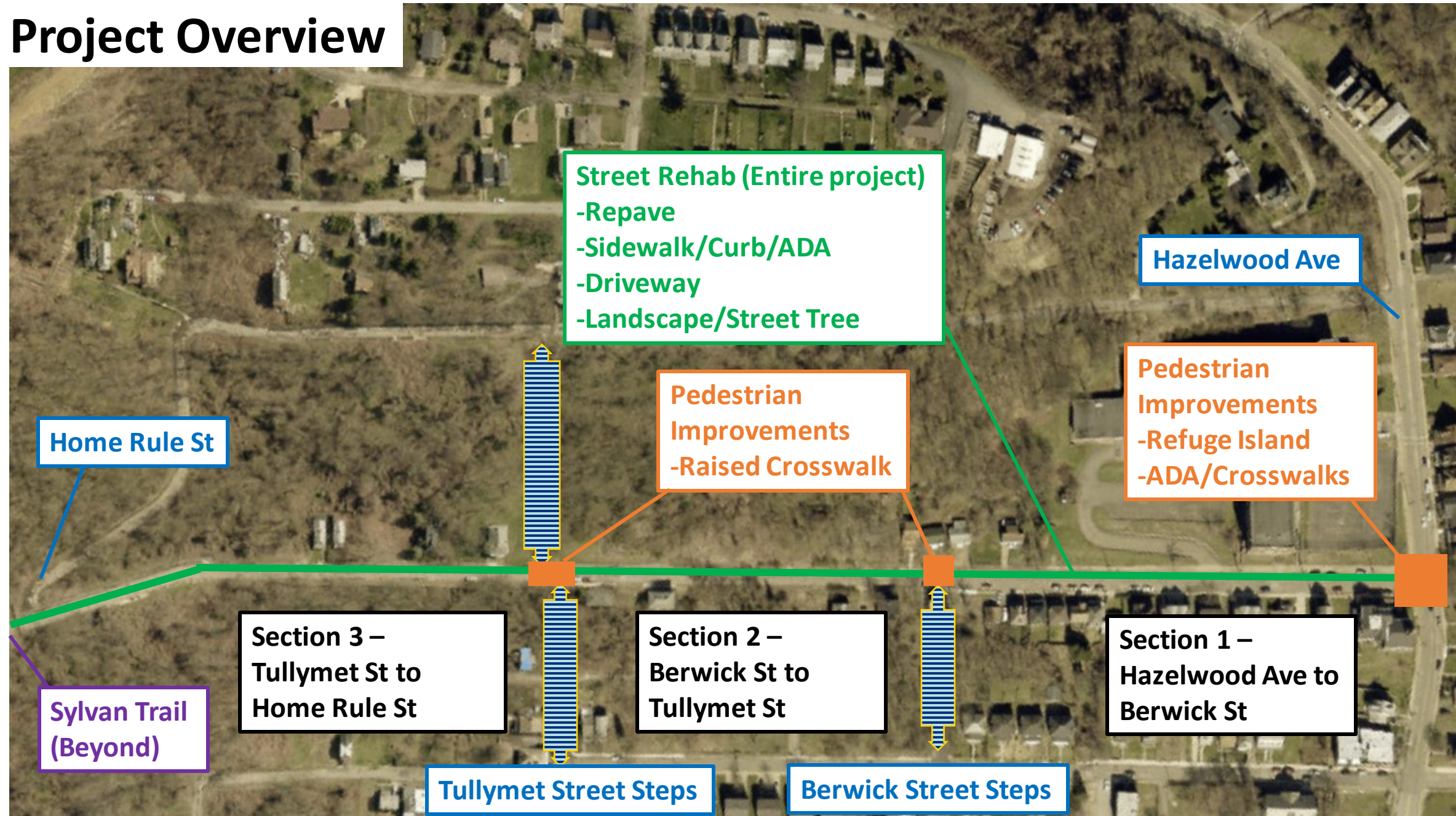
Bi-directional sharrows (markings) like these are used on narrow, yield streets



A speed hump installed as part of a Neighborway in the South Side



Project Overview



Section 1 – Hazelwood to Berwick

- Repave Sylvan Avenue
- Reconstruct sidewalks, driveways, and curbs (both sides)
- Signage and pavement markings
 - Neighborway signage/pavement markings
 - Parking on both sides
- Plant trees
- Concrete pedestrian refuge island at Hazelwood Street intersection



Current Conditions



Sylvan Avenue at Hazelwood Avenue – looking south



Pedestrian Refuge Island Example



Pedestrian refuge island installed on 40th Street



Example of a pedestrian refuge with raised concrete



Current Conditions



Sylvan Avenue near Gladstone School building – looking north



Section 2 – Berwick to Tullymet

- Repave Sylvan Avenue
- Reconstruct sidewalk, driveways, and curb (both sides)
- Signage and pavement markings
 - Neighborway signage/pavement markings
 - Parking on east side
- Raised pedestrian crossing at Berwick Street steps



Current Conditions



Sylvan Avenue – looking north



Section 3 – Tullymet to Home Rule

- Repave Sylvan Avenue
- Reconstruction of sidewalk, driveways, and curb (east side)
- Installation of landscaping improvements (west side)
- Signage and pavement markings
 - Neighborway signage/pavement markings
 - Parking on east side
- Raised pedestrian crossing at Tullymet Street steps



Current Conditions



Sylvan Avenue – looking north



Current Conditions



Sylvan Avenue at Home Rule Street



Anticipated Schedule

MILESTONES	DATE
Complete Design	February 2023
Advertisement and Bid Selection	March-April 2023
Contractor Start	June 2023
Construction Complete	November 2023



Frequently Asked Questions!

Will the trail be open to motor vehicles?

- No – except for City of Pittsburgh vehicles driven by crews responsible for trail maintenance

Where did all the "shuttle money" go?

- The proposed shuttle never had any dedicated city funds.

Can the city use this money to work on other important projects in this neighborhood?

- No. The grant awarded to the city by the federal government was specifically for the Sylvan Avenue trail. The city is always pursuing funds to do multiple projects in every community.

Why did the city go after this grant in the first place?

- The Greater Hazelwood Neighborhood Plan, adopted by the City in 2019, identifies trail development – the "Hazelwood Greenway" as a priority.



More to come – We'll be back!

- Further Hazelwood Ave. Traffic Calming
- City Steps maintenance
- We will be back in Hazelwood to continue discussing these important items





Thank You!

**WE APPRECIATE YOUR TIME,
YOUR CONCERN, AND YOUR
LOVE OF HAZELWOOD**

Question & Answer



Contact/Additional Questions

City of Pittsburgh
Neighborhood Services
neighbor@pittsburghpa.gov

