



Spring Hill Park Improvements

Community Meeting #1

March 23, 2023

Introductions & Project Team:



Andrea Ketzel

Senior Landscape Architect
Department of Public Works



Rebekkah Ranallo

Senior Manager of
Neighborhood Services
Mayor's Office



Councilman Bobby Wilson

Council District 1

Consultants:

Pashek+MTR

Landscape Architecture

Graves Design Group

Architecture

Tabon Engineering

Surveying, Civil Engineering

Santangelo & Lindsay

Electrical Engineering



Meeting Agenda

- Meeting Objective and Norms
- Summary of Community Feedback
 - 120+ responses to online survey!
- Project Goals & Schedule
- Existing Conditions
- Concept Review
- Q&A
- Next Steps and Closing



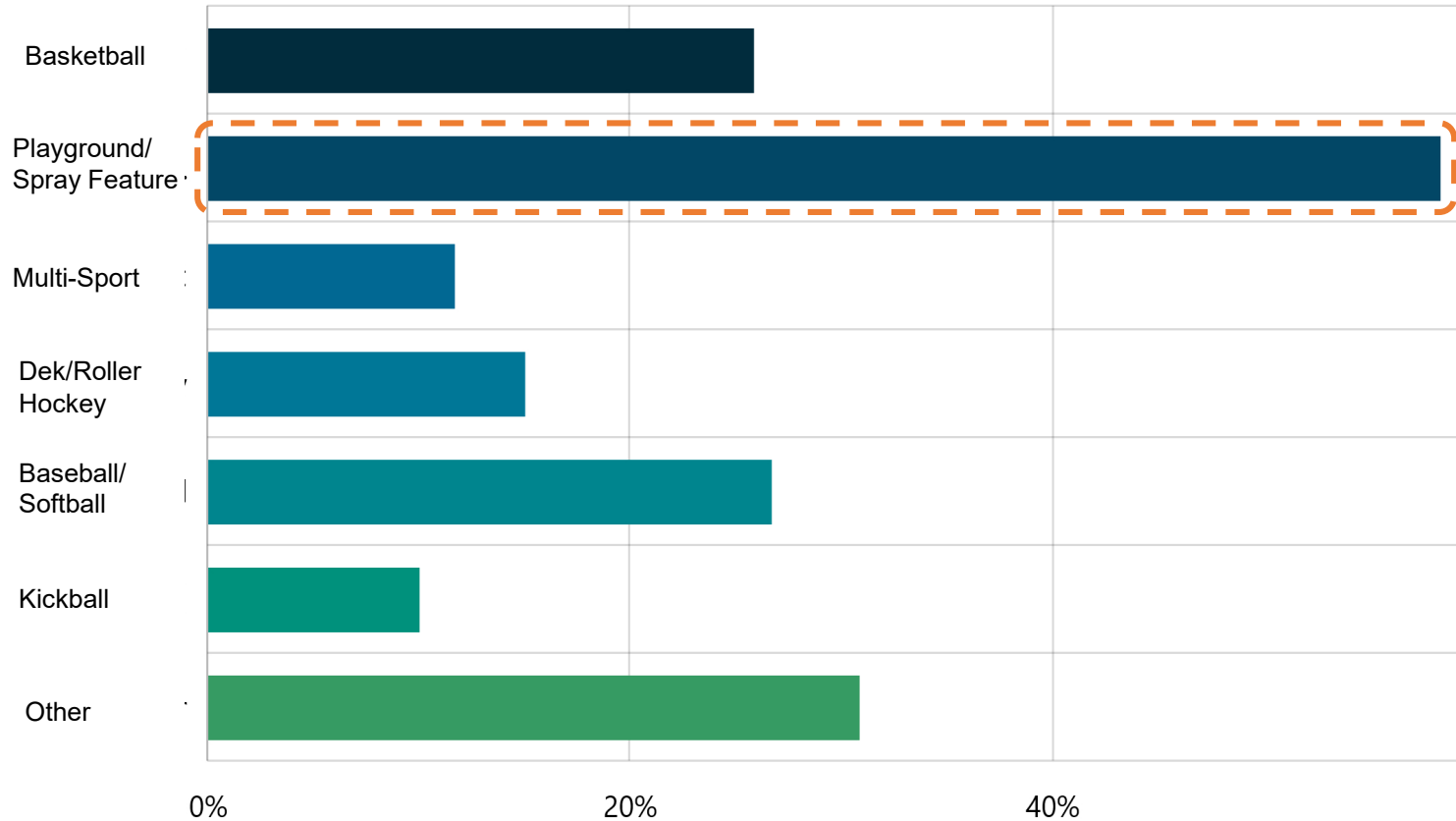
Meeting Norms

- Save questions for end of presentation, or type them in the chat
- During Q&A, please "raise" virtual hand and moderator will call on you to speak
- Respect each other's time
- One speaker at a time
- Create a space where all perspectives are welcomed; agree to disagree in peace
- Agree to shared ownership of these norms



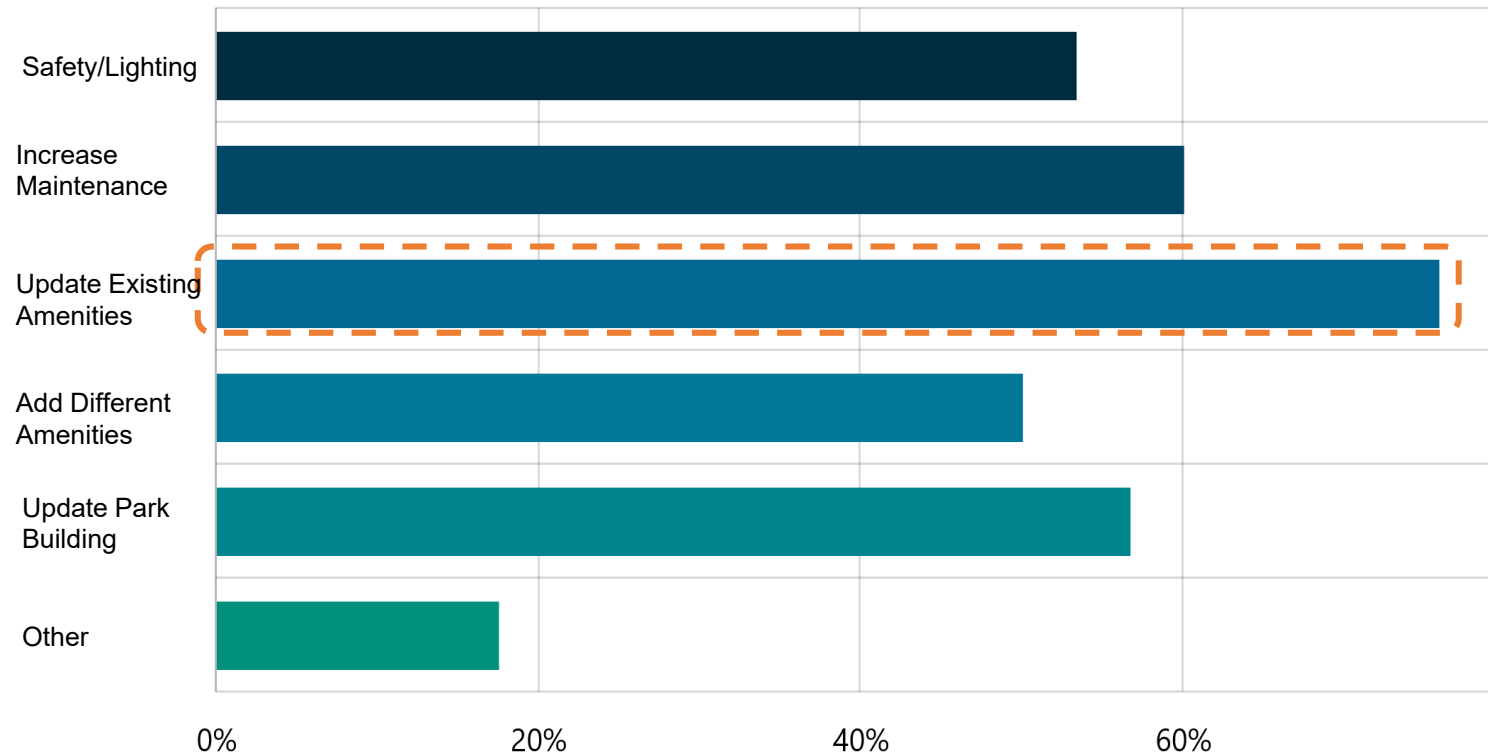
Engage PGH Feedback

How do you currently use the park?



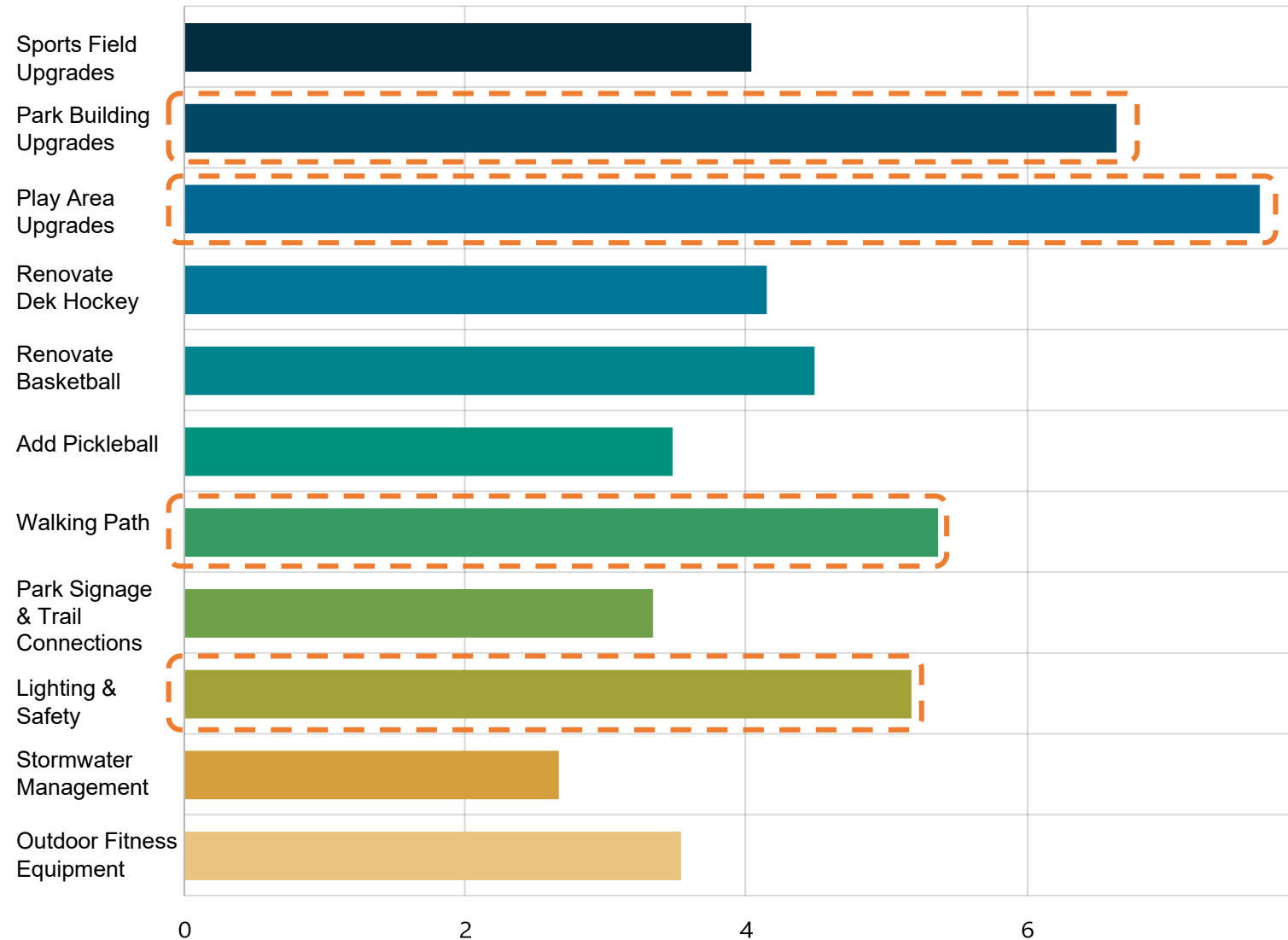
Engage PGH Feedback

In your opinion, what improvements would increase park usage?



Engage PGH Feedback

What are your top priorities for the park? Rank in order of priority.

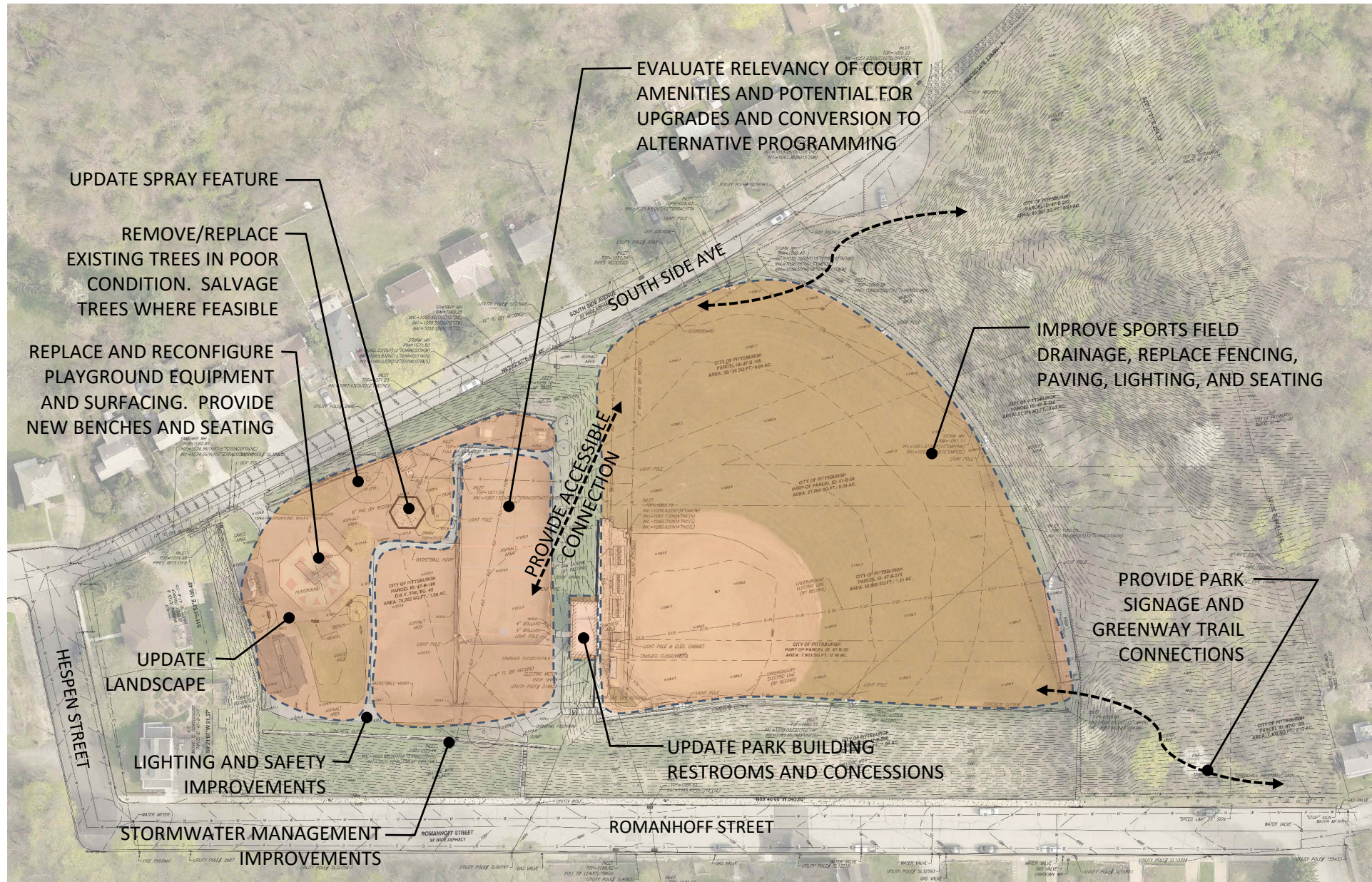


Engage PGH Feedback

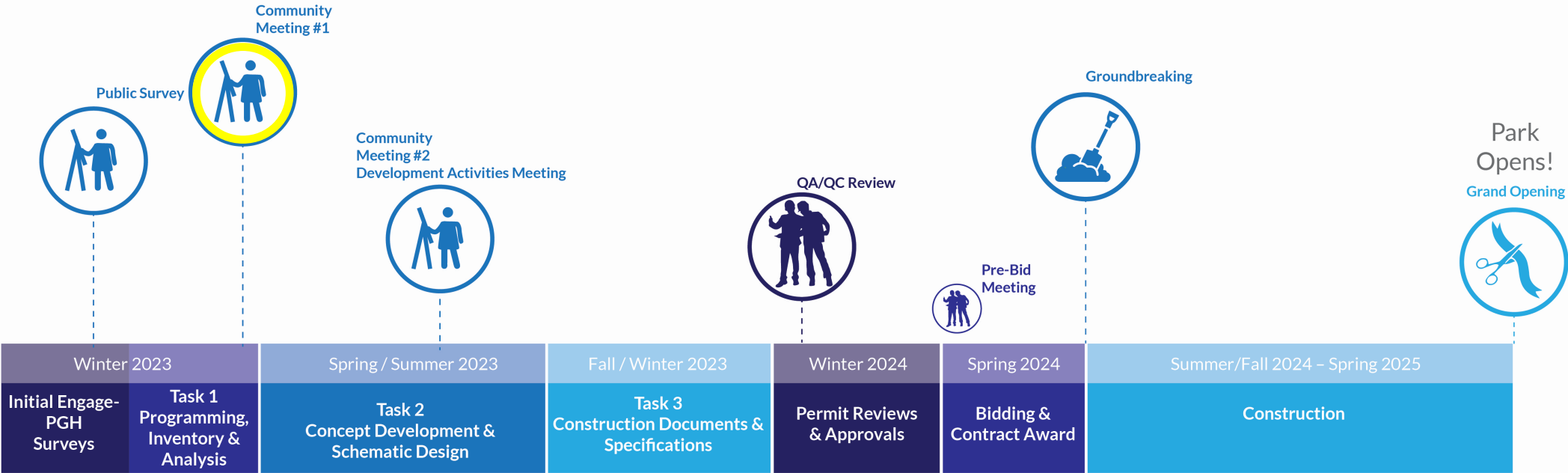
Is there anything else we should consider in terms of improvements?



This project will accomplish:



Schedule



Existing Conditions



Concept #1

- ① Off-street accessible parking and park entrance
- ② Spray feature area
- ③ 2-5 year-old play equipment with lighting, benches, drinking fountain, and safety surface
- ④ 5-12 year-old play equipment with lighting, benches, and safety surface
- ⑤ Green stormwater management
- ⑥ Half-court basketball
- ⑦ Pickleball court (2)
- ⑧ Lawn
- ⑨ Walking path
- ⑩ Accessible path
- ⑪ Update restrooms and concessions in park building
- ⑫ Multi-purpose green space
- ⑬ Greenway path and connection



Concept #2

- ① Spray feature area
- ② Green stormwater management
- ③ 5-12 year-old play equipment with lighting, benches, pavilion, drinking fountain, and safety surface
- ④ Lawn
- ⑤ 2-5 Year-old play equipment with lighting, benches, and safety surface
- ⑥ Dek hockey spectator area with bleachers
- ⑦ Dek hockey court
- ⑧ Outdoor fitness/exercise equipment
- ⑨ Walking path
- ⑩ Accessible path
- ⑪ Greenway path and connection
- ⑫ Update restrooms and concessions in park building
- ⑬ Shift sports field fence 20' infield, improve drainage, add new scoreboard, lighting, dugouts, bleachers, spectator area, and Greenway path connection



Play Equipment Style – Arches



Modular Climbing Structure



Sensory Panels



Rotating Climber



Accessible Swing



Nest Swing



Music Panels

Play Equipment Style – Nature



Modular Play Structure



Obstacle Climbing Structure



Pendulum Swing



Lake Boat



Storefront & Playhouse

Play Equipment Style – Industrial



Block Climbers



Rope Tower and Slide



Rotating Ring



Balance Springer



Spinners



Standard Park Features



Next Steps and Closing

- Spring 2023:
 - Continue to Collect Feedback on Concepts 1 & 2
 - Consolidate Feedback into Final Design Concept
- Summer 2023
 - Community Meeting #2/ Development Activities Meeting
 - Civic Design Commission (Previously Art Commission)
- Follow Engage PGH for updates!

<https://engage.pittsburghpa.gov/spring-hill>





Thank You!

Questions?

Contact: neighbor@pittsburghpa.gov