

Four Mile Run Playground Renovation

Community Meeting #2
September 1, 2022



- I. Introduction & Project Recap
- II. Community Input
- II. Playground Plan
- III. Playground Options
- IV. Next Steps

Welcome & Introductions

- Funding: The City of Pittsburgh received a grant from Carnegie Mellon University for this work
 - Scope of Work
 - Playground
 - Safety Surface
 - Minor site improvements such as benches, trees / plantings as needed and if budget allows
- Who is involved?
 - Council District 5
 - Department of Public Works
 - Community Partners

- I. Introduction & Project Recap
- II. Community Input
- II. Playground Plan
- III. Playground Options
- IV. Next Steps

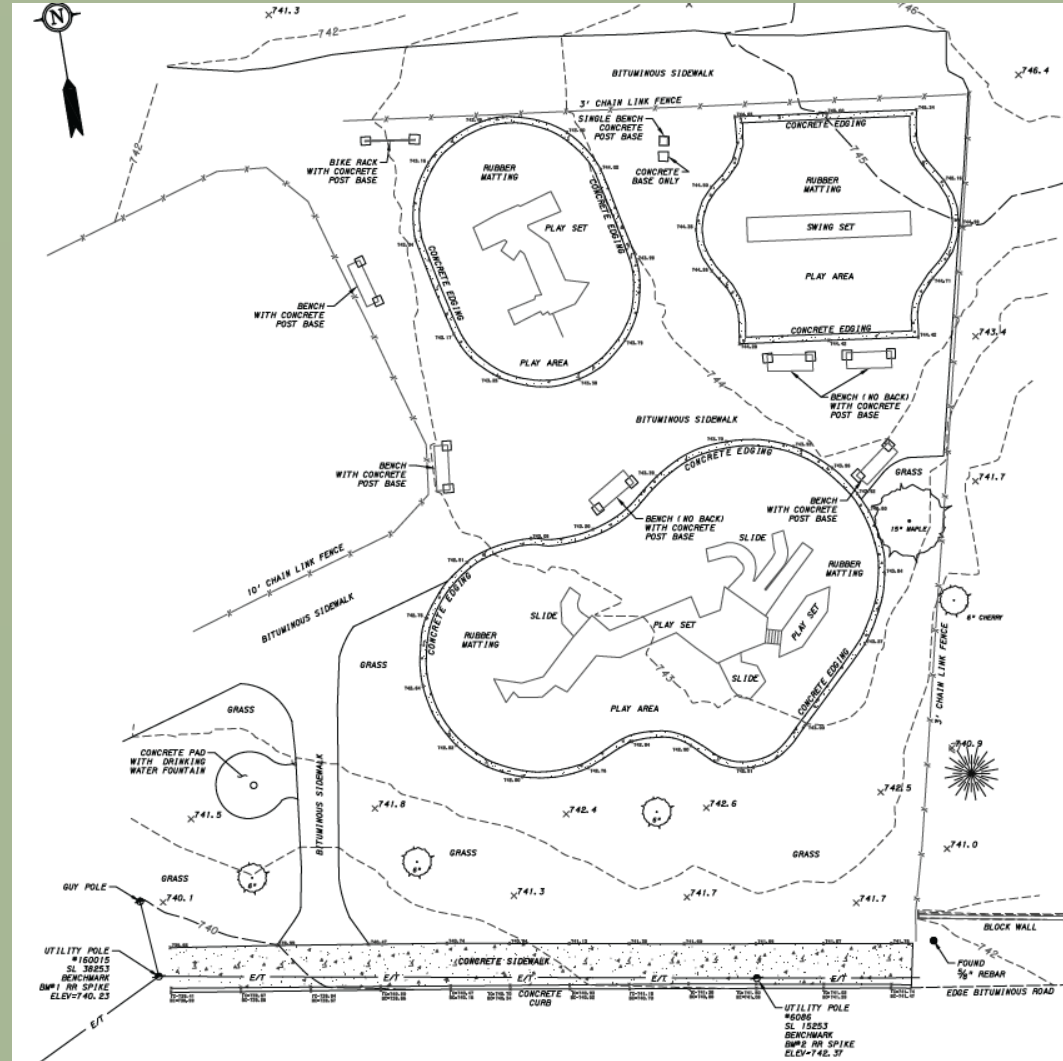
Existing Conditions



- I. Introduction & Project Recap
- II. Community Input
- II. Playground Plan
- III. Playground Options
- IV. Next Steps

Work-to-Date

- Last full renovation 2003
- Short-term repairs to equipment in 2021
- Site survey completed →
- Community Meeting #1
- EngagePGH survey
- Playground options & cost estimates
- Preliminary design for additional amenities



- I. Introduction & Project Recap
- II. Community Input
- II. Playground Plan
- III. Playground Options
- IV. Next Steps

What We Heard at Meeting #1

OVERALL PROJECT

- Questions about budget (\$300k)
- Interest in stormwater management
- Interest in picnic tables, grills
- Residents have built horse-shoes / bocce
- Greenfield School has no PG
- Want working water fountain with dog spigot and bottle filler
- Hedges to buffer from street- fast cars
- Want bathrooms / porta-johns
- Want improvements at awkward triangle area near bball / trail
- Interest in dog park
- Interest in Lewis PG, with recently installed PG, wall issues, want fountain but no waterline

PLAYGROUND

- Kids of various ages- some hold meetings
- Interest in traditional climbing, rope climbing, climbing wall, swings, merry-go-round, spinning, slides, monkey bars, trampoline, pool
- Accessibility is important
- Maintain toddler area
- Activities for teens (hockey, bball, etc.)

I. Introduction & Project Recap

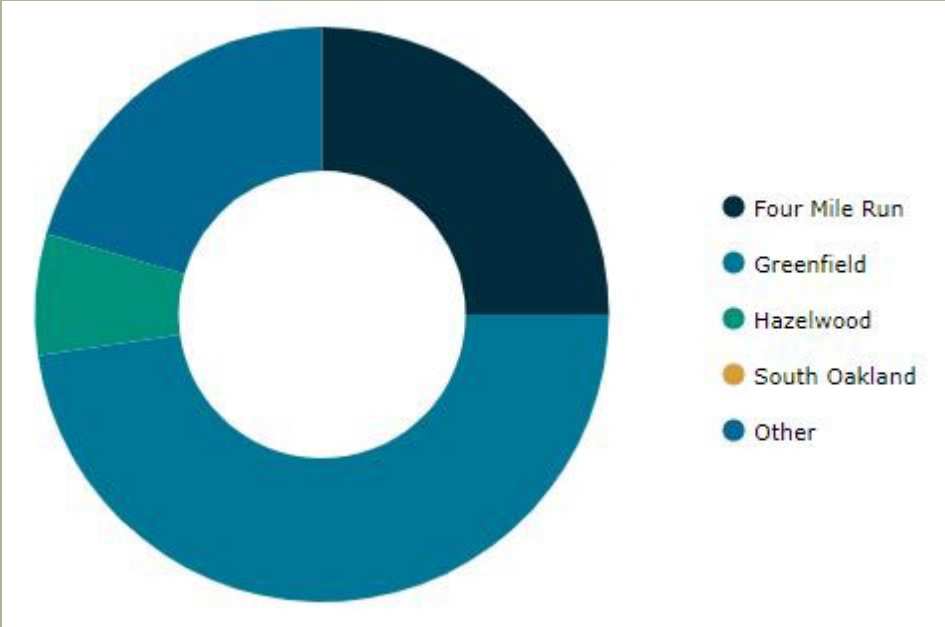
II. Community Input

II. Playground Plan

III. Playground Options

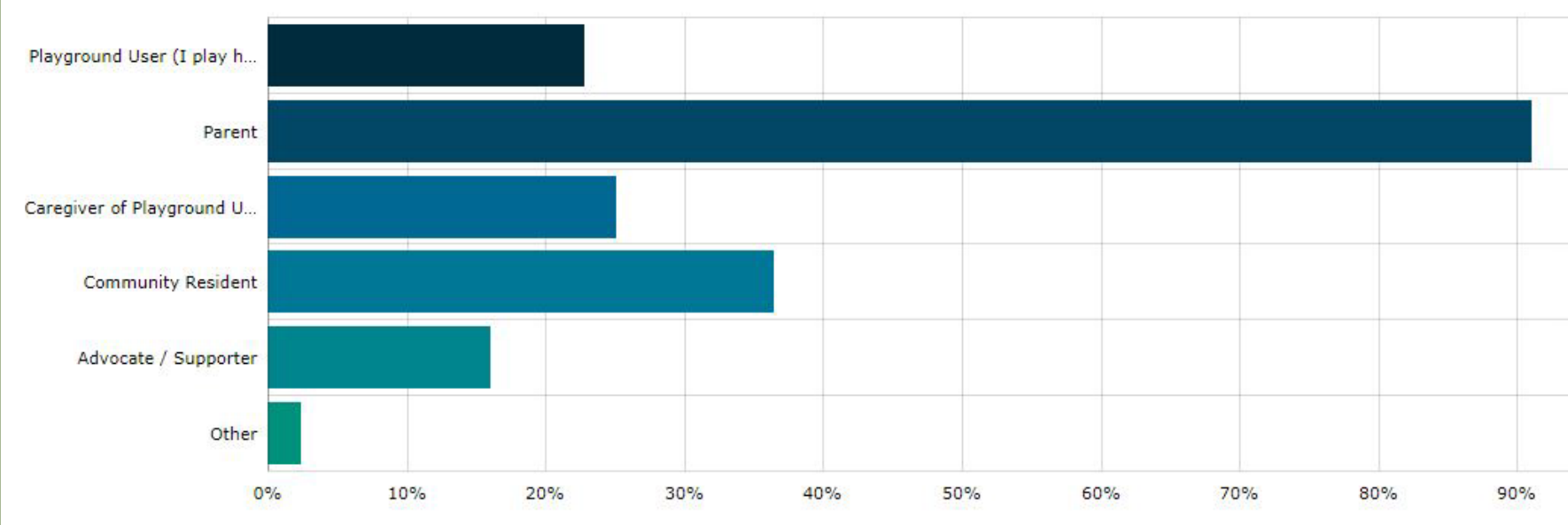
IV. Next Steps

What neighborhood do you live in?



- I. Introduction & Project Recap
- II. Community Input**
- II. Playground Plan
- III. Playground Options
- IV. Next Steps

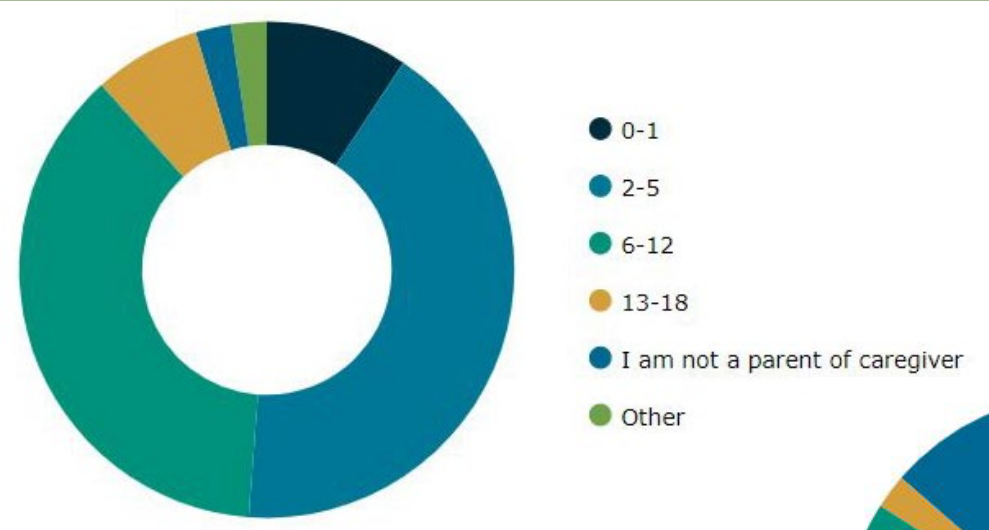
What is your relationship to the playground?



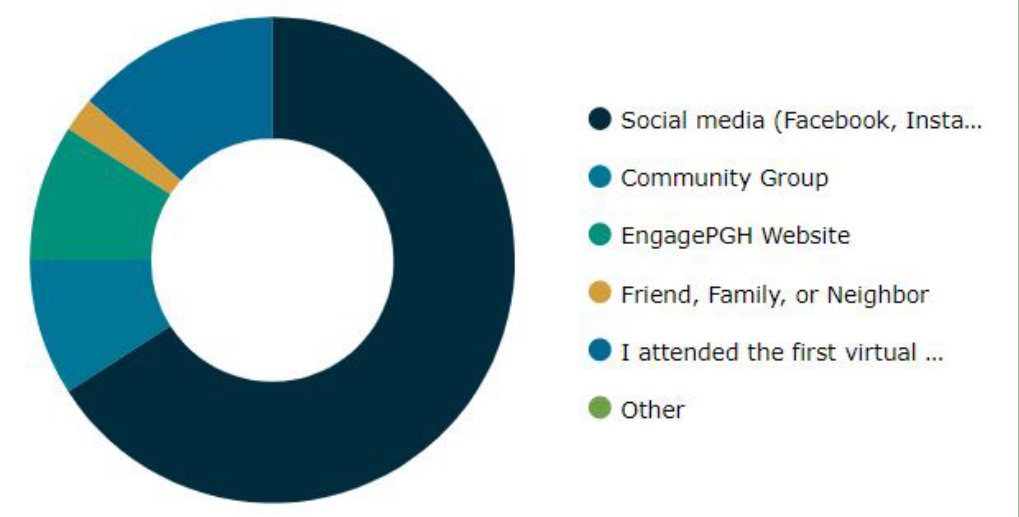
- I. Introduction & Project Recap
- II. Community Input**
- II. Playground Plan
- III. Playground Options
- IV. Next Steps

EngagePGH Survey Questions

If you are a parent or caregiver, what are the ages of children in your care?

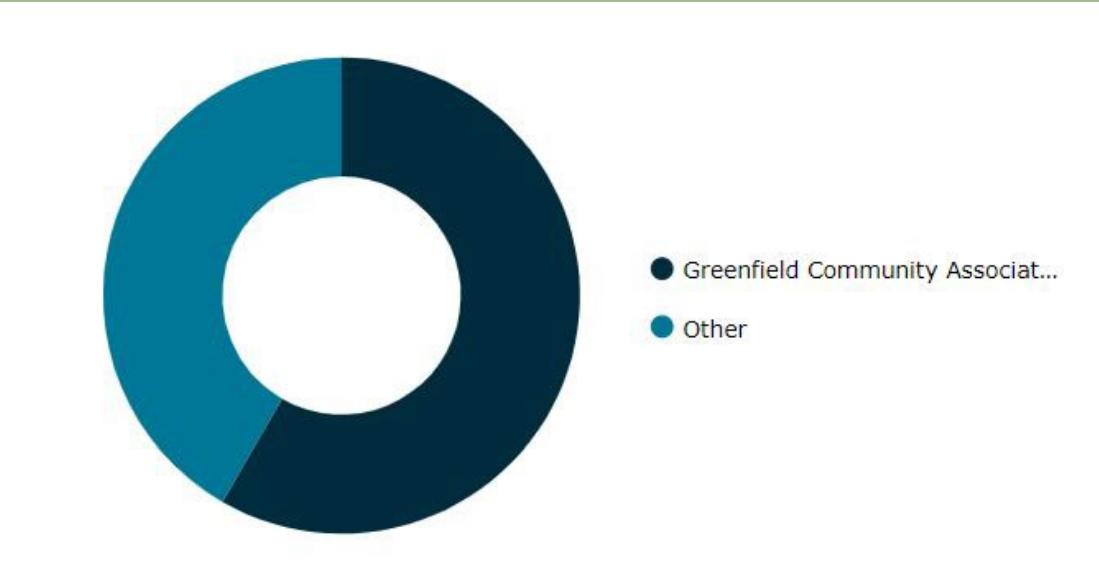


How did you hear about this survey?



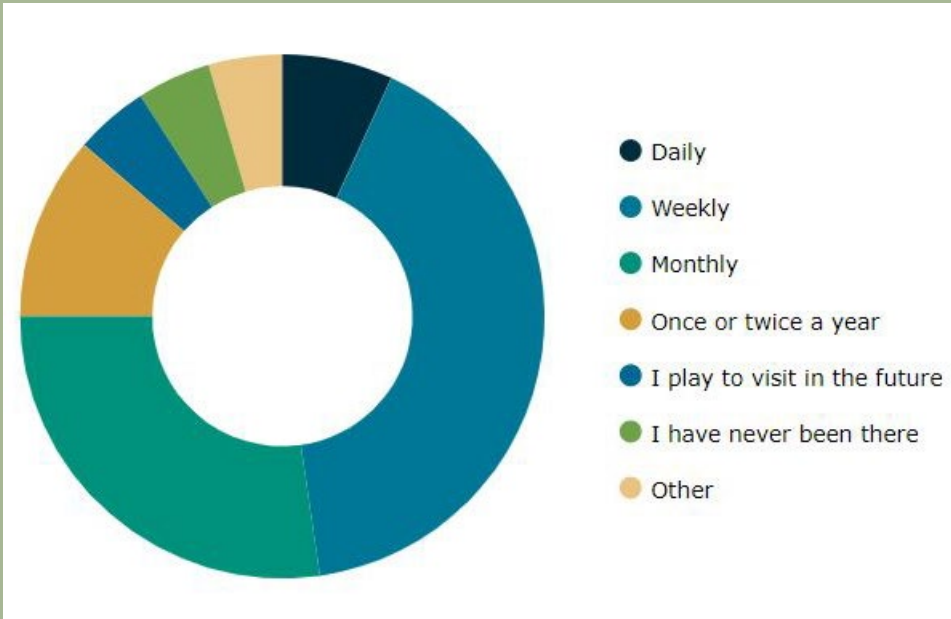
- I. Introduction & Project Recap
- II. Community Input
- II. Playground Plan
- III. Playground Options
- IV. Next Steps

Are you affiliated with any relevant community groups?

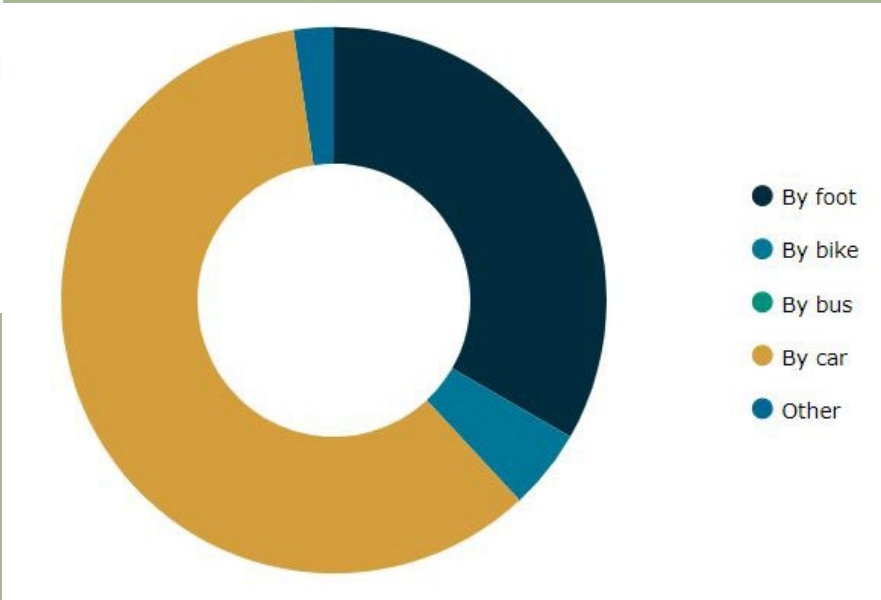


- I. Introduction & Project Recap
- II. Community Input**
- II. Playground Plan
- III. Playground Options
- IV. Next Steps

Approximately how often do you visit the playground?



How do you usually get to the playground?



- I. Introduction & Project Recap
- II. Community Input
 - II. Playground Plan
- III. Playground Options
- IV. Next Steps

EngagePGH Survey Questions

What parts of the previous playground would you like to see in the new one?



- I. Introduction & Project Recap
- II. Community Input
- II. Playground Plan
- III. Playground Options
- IV. Next Steps

EngagePGH Survey Questions

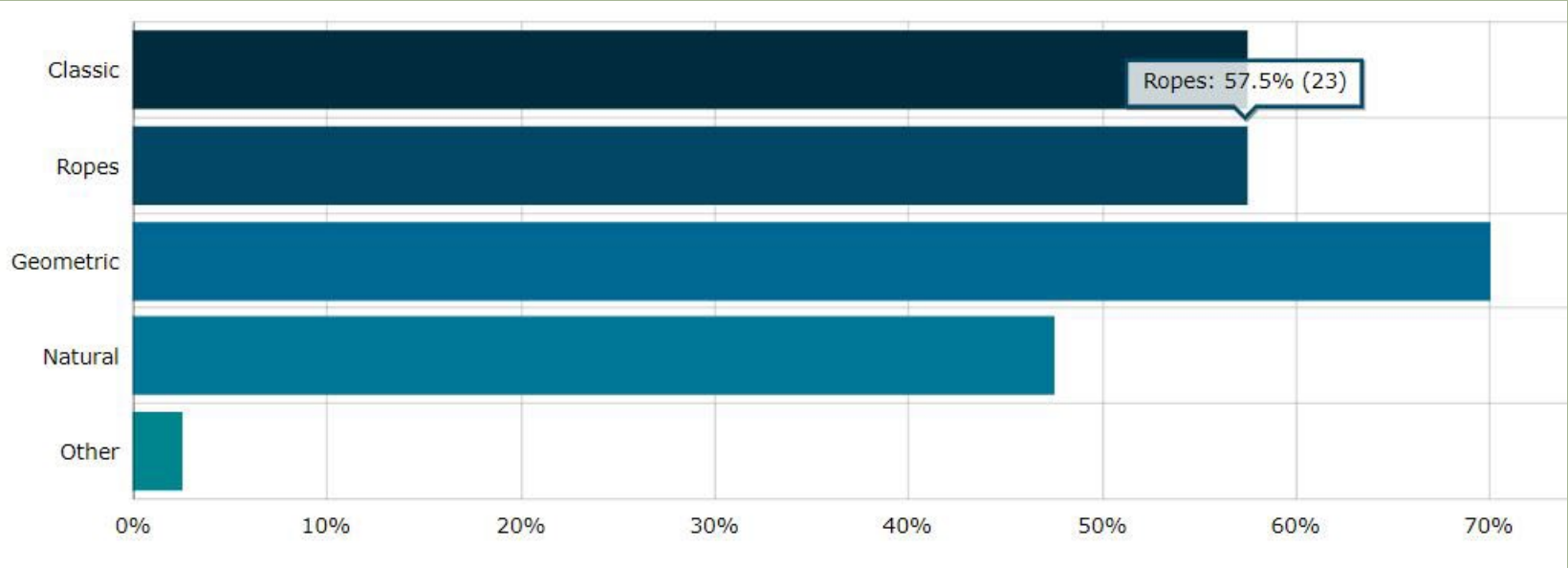
What parts of the previous playground would you like to see changed in the new one?



A word cloud of survey responses for playground changes. The words are arranged in a horizontal, cloud-like shape. The most prominent word is "climbing" in large, bold, dark blue letters. Other significant words include "benches", "stormwater management", "new safety surface", "repairs only", "picnic table", "grill", "water fountain", "bottle filler", "change everything", "playground fence / barrier", "dek hockey", "safety", "dog spigot", "swings", "exercise equipment", "themed play", "musical element", "inclusive", "older kids", "merry-go-round", "Lewis Playground (Hazelwood)", "bike repair station", "monkey bars", "plantings", "toddlers", "less plastic", "more renewable materials", and "Swing with Me" swing.

- I. Introduction & Project Recap
- II. Community Input
- II. Playground Plan
- III. Playground Options
- IV. Next Steps

What style of equipment do you think is most appropriate here?



- I. Introduction & Project Recap
- II. **Community Input**
- II. Playground Plan
- III. Playground Options
- IV. Next Steps

Is there anything else you'd like us to know regarding the playground?



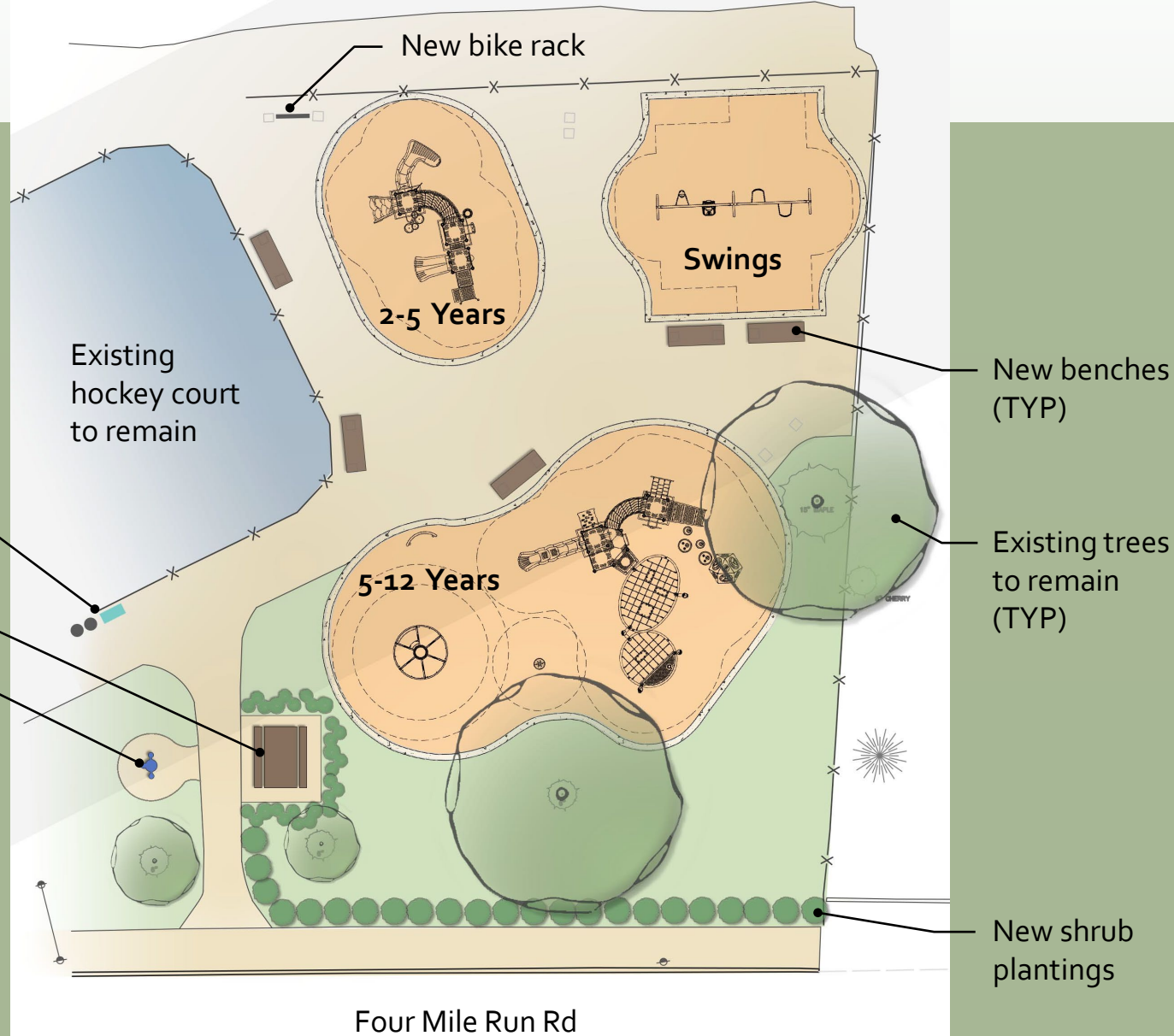
- I. Introduction & Project Recap
- II. Community Input
- II. Playground Plan
- III. Playground Options
- IV. Next Steps

Playground Plan

New trash and recycling,
Free little library to remain

New picnic table

New water fountain with
dog spigot and bottle filler



- I. Introduction & Project Recap
- II. Community Input
- II. Playground Plan**
- III. Playground Options
- IV. Next Steps

Triangle Area for reference



- I. Introduction & Project Recap
- II. Community Input
- II. Playground Plan**
- III. Playground Options
- IV. Next Steps

Playground Option 1



- I. Introduction & Project Recap
- II. Community Input
- II. Playground Plan
- III. Playground Options**
- IV. Next Steps

Playground Option 1



- I. Introduction & Project Recap
- II. Community Input
- II. Playground Plan
- III. Playground Options**
- IV. Next Steps

Playground Option 1



- I. Introduction & Project Recap
- II. Community Input
- II. Playground Plan
- III. Playground Options**
- IV. Next Steps

Playground Option 1



- I. Introduction & Project Recap
- II. Community Input
- II. Playground Plan
- III. Playground Options**
- IV. Next Steps

Playground Option 2



- I. Introduction & Project Recap
- II. Community Input
- II. Playground Plan
- III. Playground Options**
- IV. Next Steps

Playground Option 2



- I. Introduction & Project Recap
- II. Community Input
- II. Playground Plan
- III. Playground Options**
- IV. Next Steps

Playground Option 2



- I. Introduction & Project Recap
- II. Community Input
- II. Playground Plan
- III. Playground Options**
- IV. Next Steps

Playground Option 2



- I. Introduction & Project Recap
- II. Community Input
- II. Playground Plan
- III. Playground Options**
- IV. Next Steps

Playground Option 3



- I. Introduction & Project Recap
- II. Community Input
- II. Playground Plan
- III. Playground Options**
- IV. Next Steps

Playground Option 3



- I. Introduction & Project Recap
- II. Community Input
- II. Playground Plan
- III. Playground Options**
- IV. Next Steps

Playground Option 3



- I. Introduction & Project Recap
- II. Community Input
- II. Playground Plan
- III. Playground Options**
- IV. Next Steps

Playground Option 3



- I. Introduction & Project Recap
- II. Community Input
- II. Playground Plan
- III. Playground Options**
- IV. Next Steps

Next Steps

- Next steps:
 - Review feedback from meeting
 - Redesign playground based on input collected
 - Demolish existing play equipment
 - Purchase new playground equipment, safety surface and site amenities
 - Construction in 2023
- Questions? Contact: andrea.ketzel@pittsburghpa.gov
- Follow Updates: <https://engage.pittsburghpa.gov/fourmilerunPG>

- I. Introduction
- II. Existing Conditions and Historic Context
 - I. Character Images
 - I. Big Ideas
 - I. **Next Steps**