

FRICK ENVIRONMENTAL CENTER SENSORY CLASSROOM



CONCEPT DESIGN
April 2023

Meeting Guidelines



Please stay muted

Closed captioning is enabled for participants who need it. Please stay muted to cut down on background noise and keep captioning clear.



Please raise your hand

If you have a question, comment, need something repeated, etc. please raise your hand and we will call on you!



Please use private chat

Some participants may be using screen readers, which pick up on chat messages. If you have a question or comment, please send a **private message** to **Erin Tobin**, and we will read out chats for the group.

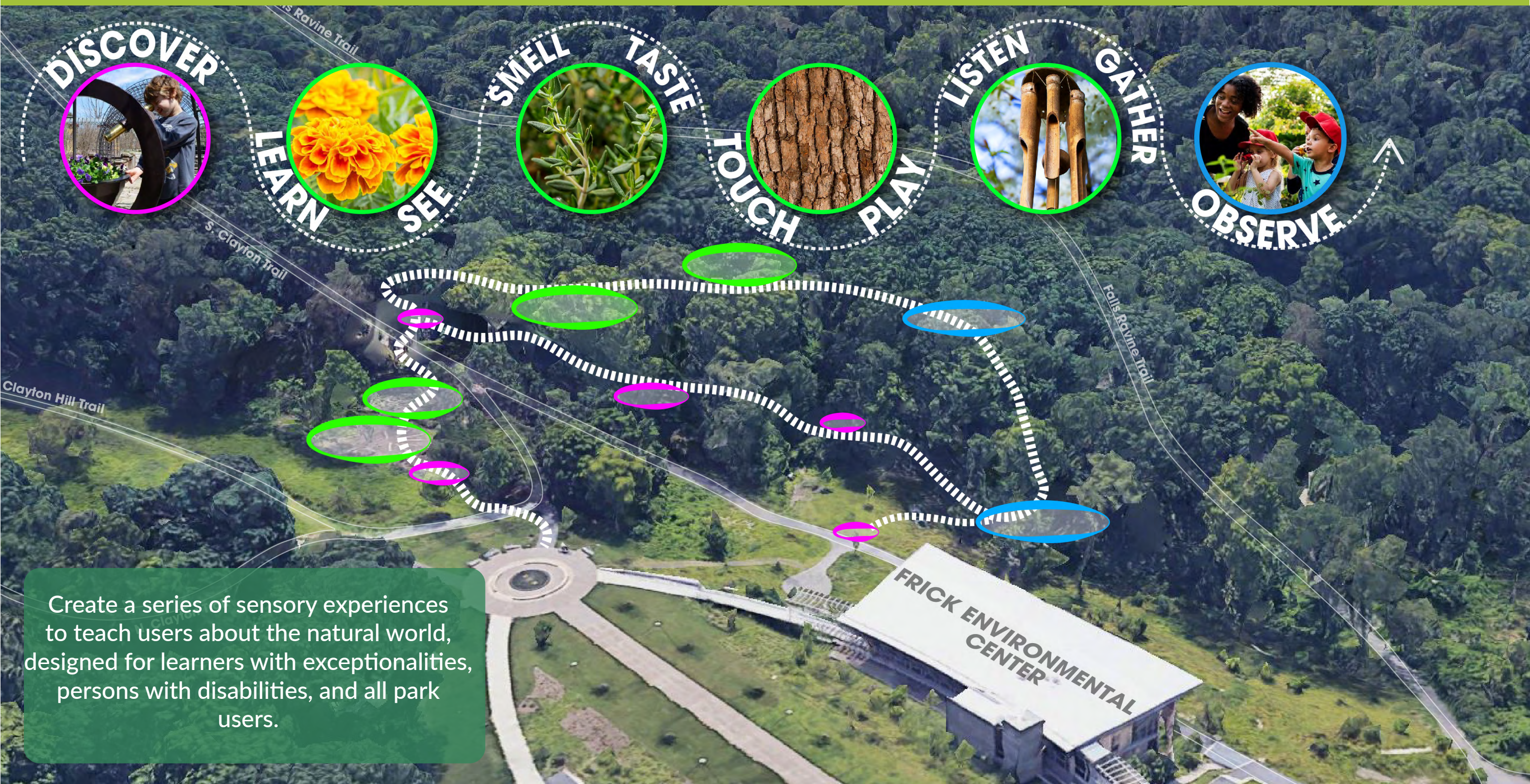
Today's Agenda

- 1. Project Introduction**
- 2. Feedback Received So Far**
- 3. Concept Design**
- 4. Discussion**



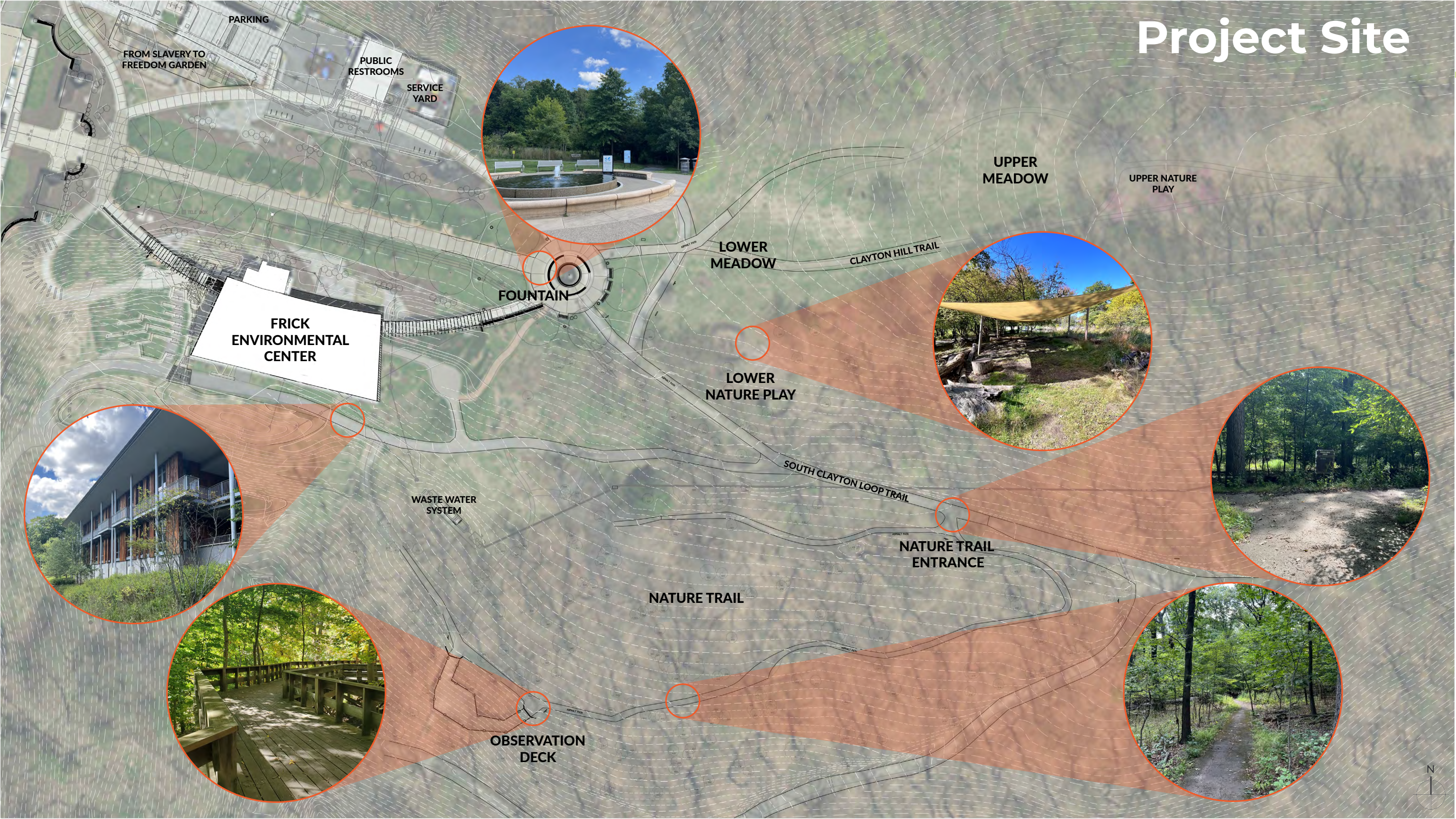
1. PROJECT INTRODUCTION

Project Vision



Create a series of sensory experiences to teach users about the natural world, designed for learners with exceptionalities, persons with disabilities, and all park users.

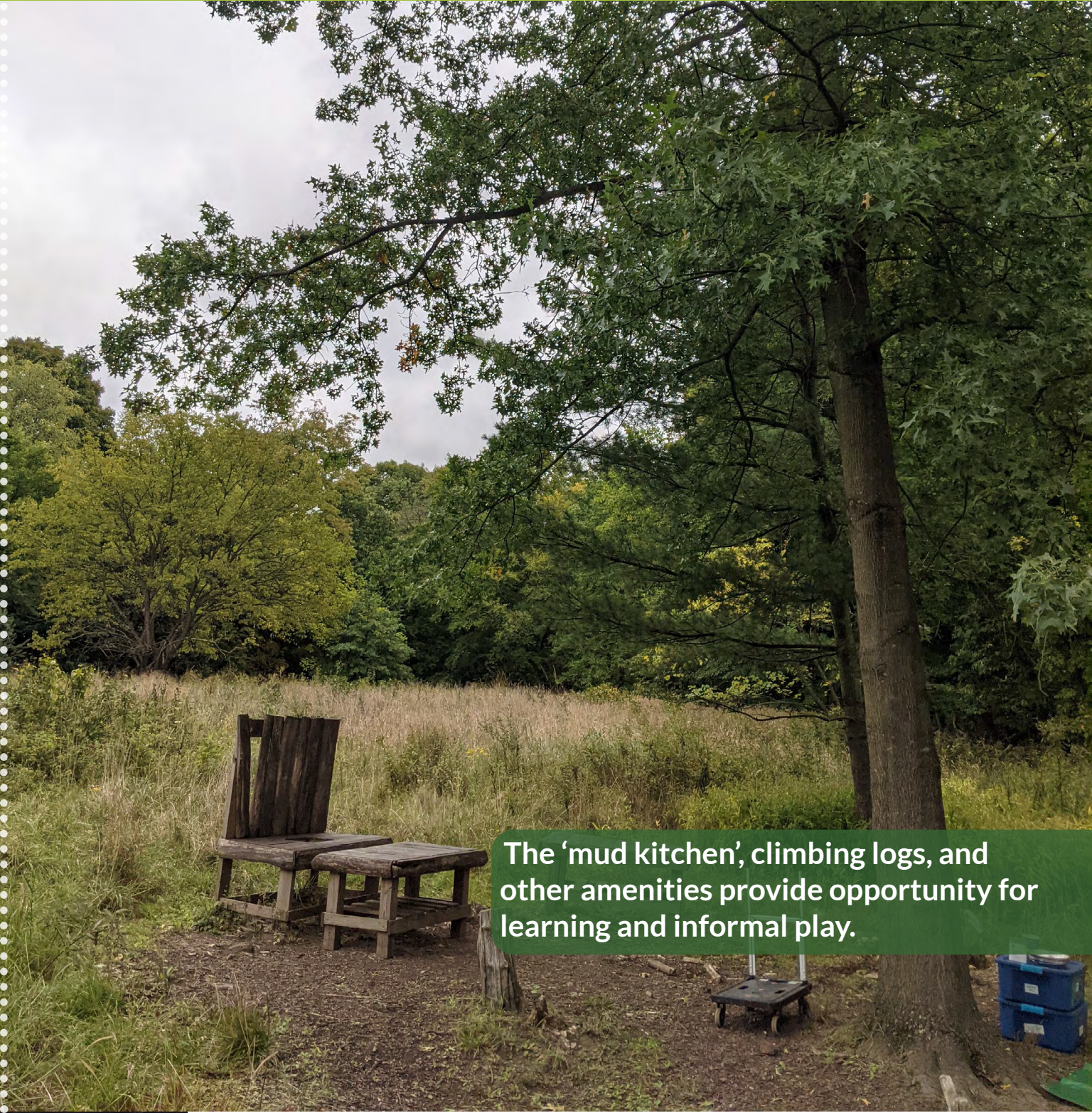
Project Site



Nature Play Space



The informal nature play and teaching space provides seating and enclosure for gathering.




The 'mud kitchen', climbing logs, and other amenities provide opportunity for learning and informal play.

Nature Trail



The paved nature trail winds through large canopy trees with logs, leaves and other natural items to explore.



The observation deck provides a unique gathering space surrounded by trees and overlooking Frick Park.

Current Use



The nature trail and informal nature play space are used for camp programming and nature hikes by PPC staff, however they are also frequently used by childcare providers and other park users.

Project Progress

Listen & Learn

October to November 2022

- Advisory Committee Meeting
- Focus Group Meetings
- Public Survey on EngagePGH

Develop Design Options

December 2022 through February 2023

- Virtual Public Meeting (Jan 24)
- Stakeholder Workshops (Jan 26 & 28)
- Public Survey on EngagePGH

Refine Design Concept

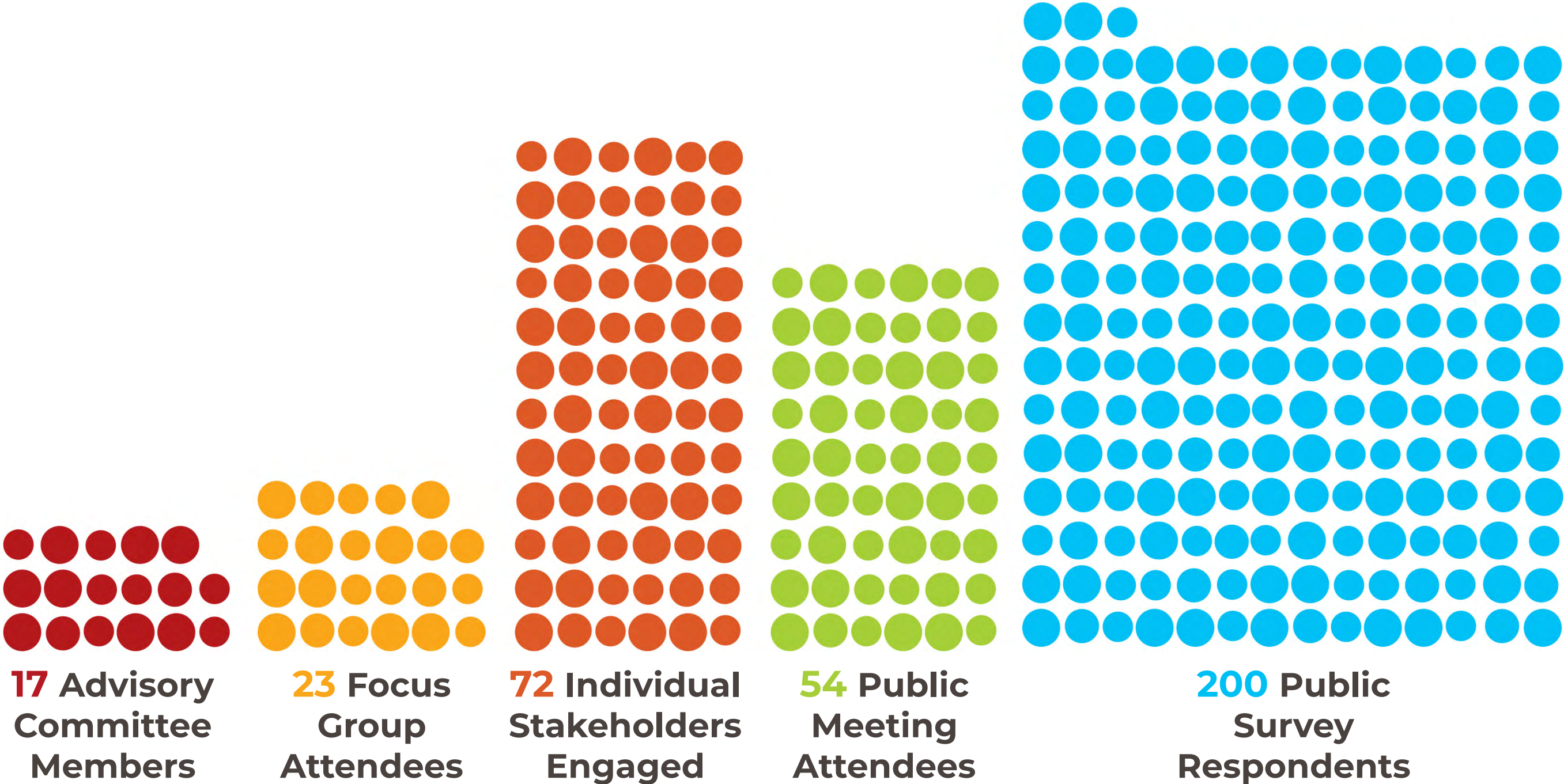
February through April 2023

- PPC design review (March 27)
- Advisory Committee Meeting (April 13)
- Stakeholder Workshops (April 18, 19, 23)



2. FEEDBACK RECEIVED SO FAR

Engagement

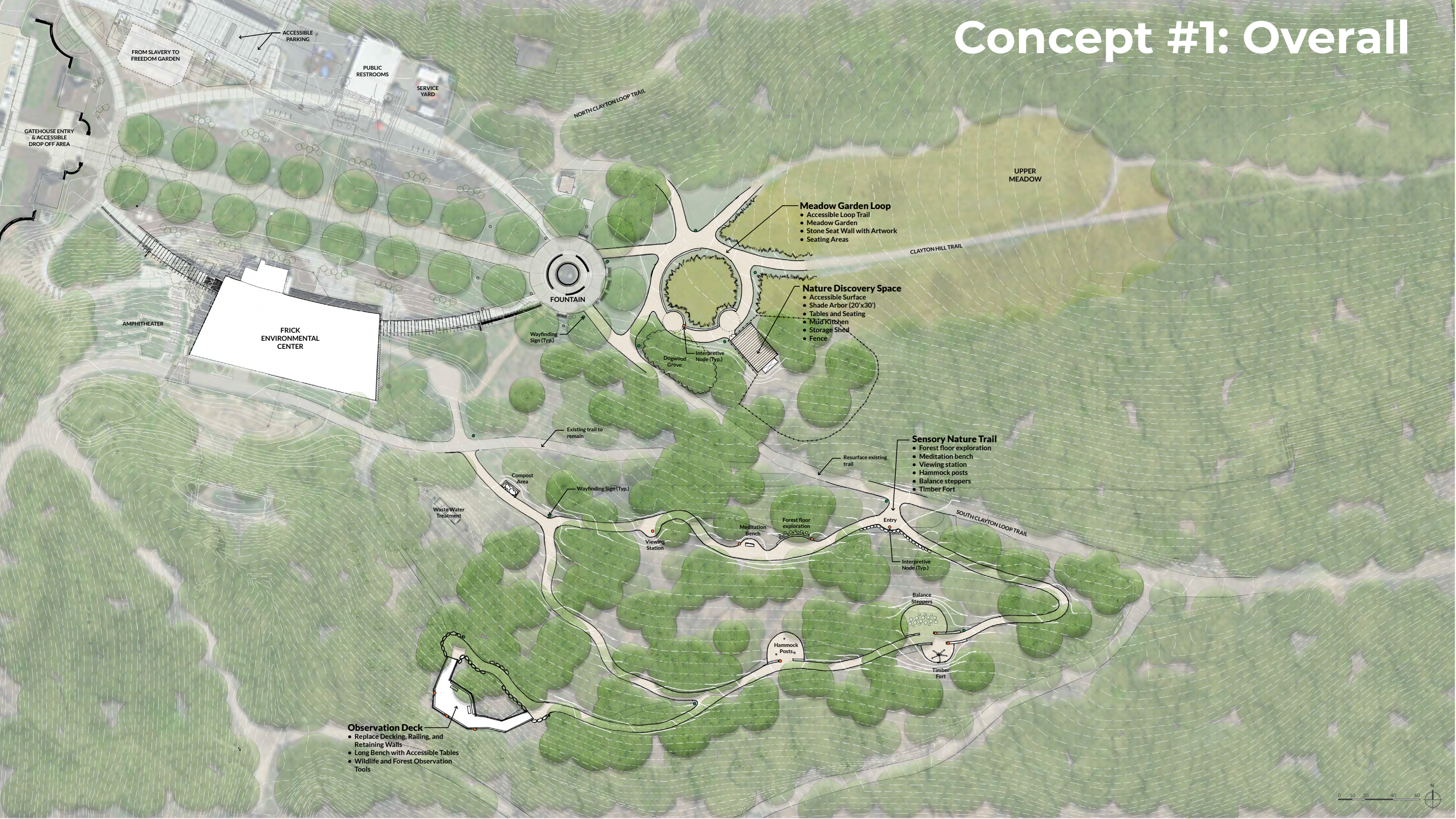


Feedback: Focus Groups & Initial Public Survey

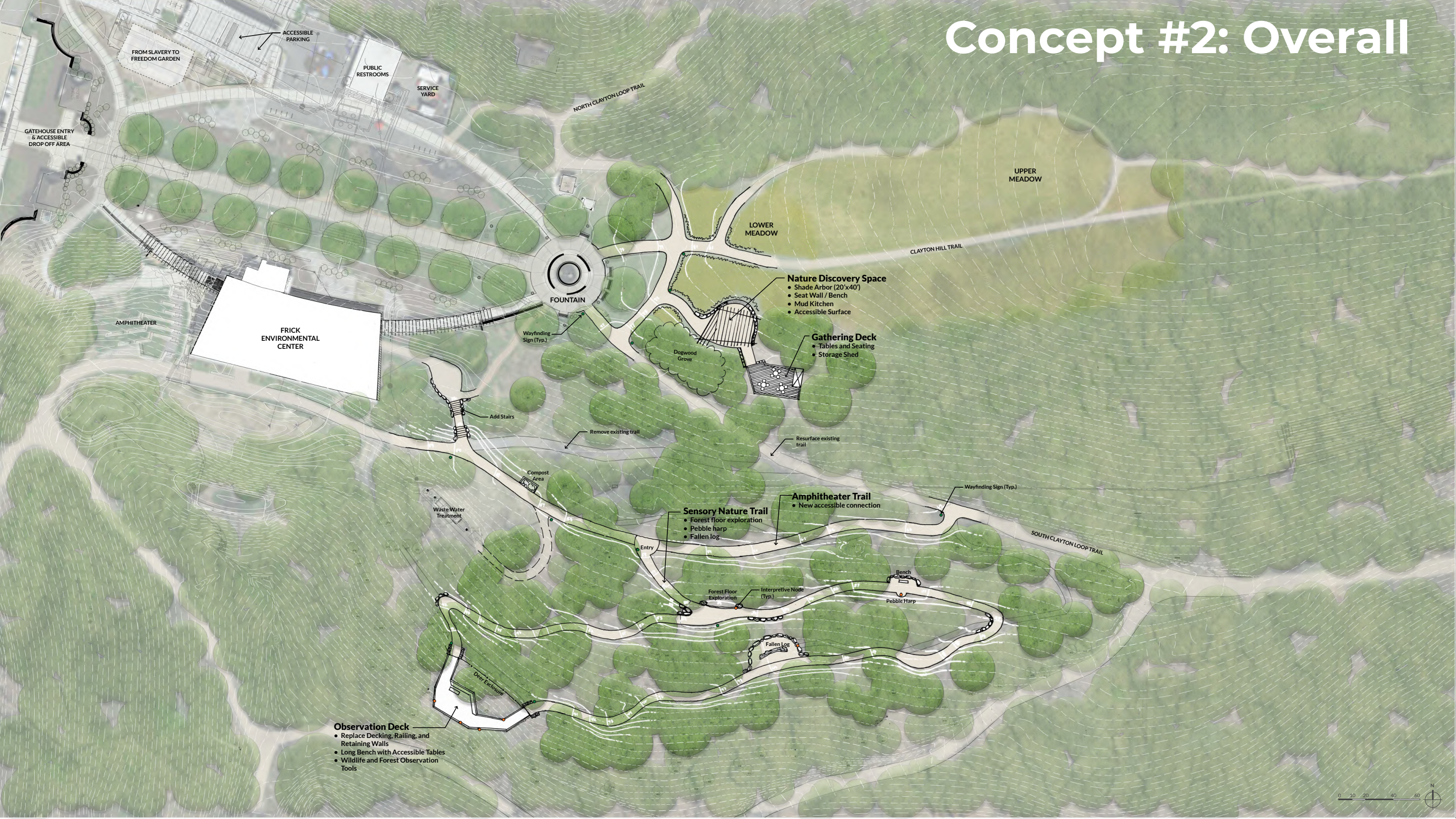
- Accessible Pathways
- Engaging & Inclusive Features
- Comfort
- Legibility



Concept #1: Overall



Concept #2: Overall



Feedback on Design Options

Nature Discovery Space from Concept #2 was preferred

- Two gathering spaces connected by a path
- Provide a boundary - e.g. low fence
- Meadow as a sensory feature
- Provide shade structure with a solid roof
- Mud kitchen and project tables at various heights, wheelchair accessible
- Storage is important

Sensory Nature Trail & Observation Deck from Concept #1 were preferred

- Preferred features: Timber fort, log steppers, forest floor exploration, listening station, viewing scope, pebble harp (at different heights), concrete with leaf imprints, tactile labyrinth
- Provide frequent resting spaces along the trail
- Provide balancing/ movement activities for wheelchair users
- Provide accessible connection to back of Frick Environmental Center building