



---

# SOUTH SIDE PARK – PHASE 1

Public Meeting – Schematic Design







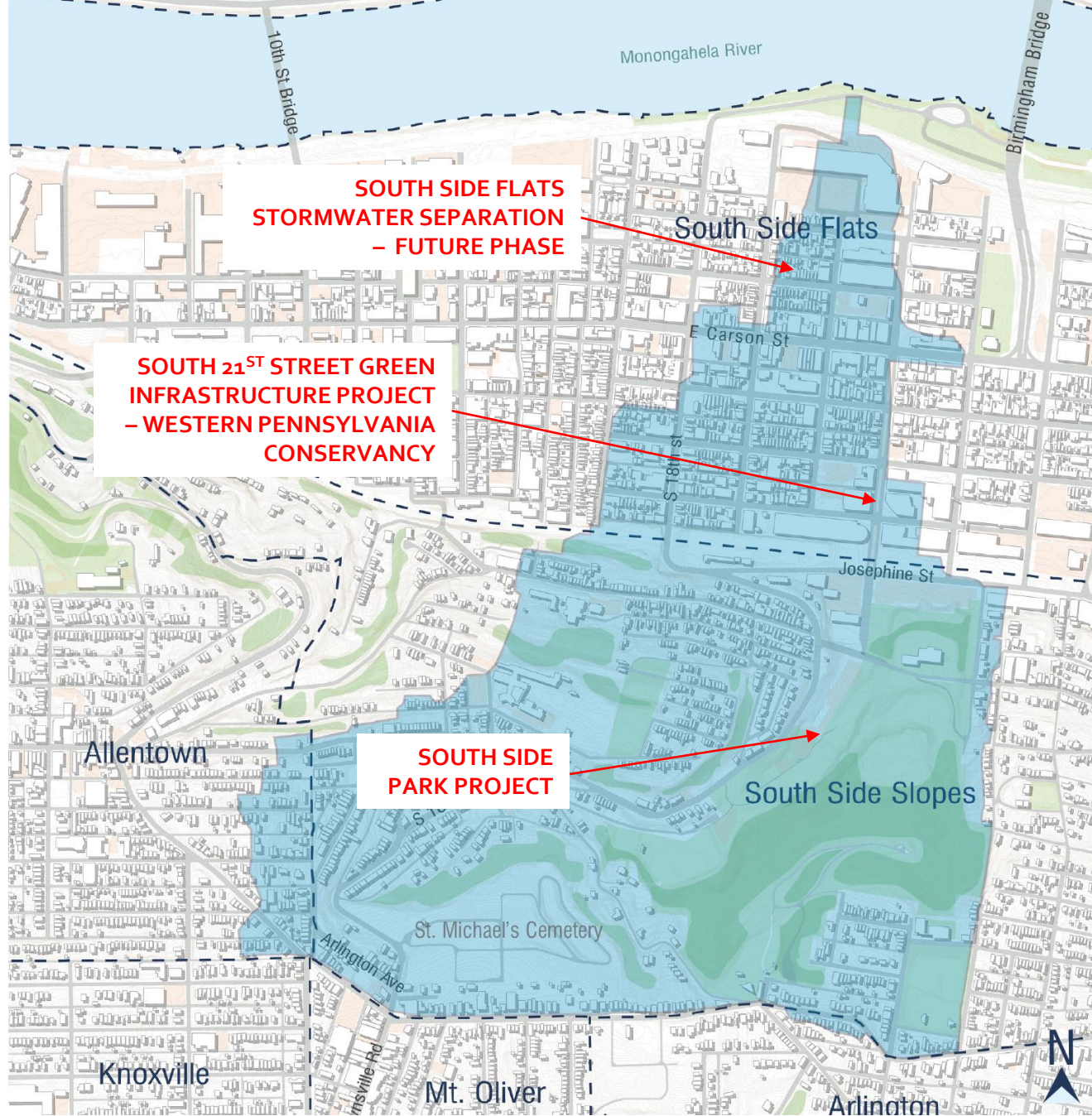
Images by Studio Bryan Hanes



# HOW DID WE GET HERE?

- Master Plan completed in May 2018 by Department of City Planning and Studio Bryan Hanes
  - Outlined programming and improvements for the park.
  - Identified a phasing plan with Green Infrastructure, a Boardwalk, Basketball Court, Children's Discovery Area, Shared-Use Bike Path, Renovated Parking, etc. as Phase I
- Project transitions from Department of City Planning to Department of Public Works for implementation
- City received Capital funding to further design and construct Phase I of the Master Plan.
- City applied for GTRP and LWCF Grants
- Pashek + MTR was hired as a consultant to the City to implement above-ground features of Phase I.
- Partnering with PWSA to design Green Infrastructure to manage stormwater





# GREEN INFRASTRUCTURE AND STORMWATER MANAGEMENT HOW DID WE GET HERE?

- Presented Final Preliminary Design at August 2019 Community Meeting
- M-16 Priority Watershed in Green First Plan
  - 103 Million Gallons (MG) Combined Sewer Overflow (CSO)
- Watershed Goals
  - 1.5" from 23 Acres of Impervious Area
  - Reduce CSOs
  - Create Capacity in Combined Sewers
- Project Goals
  - 1.5" from 9 acres of Impervious Area
  - Capture and Retain Stormwater to Slowly Release
- Currently in 60% Design Phase

Phase 1 Scope – How it fits in with the Master Plan

Phase 1 Project Schedule

Review of Preliminary Design for Phase 1

Next Steps

Community input via “stations” and comment forms



## MASTER PLAN - Overview

### Phase I Items Highlighted

1. Parcel acquired for green infrastructure
2. Renovated parking (30 spots)
3. Drive
4. ADA-accessible boardwalk
5. Parking (60 spots)
6. Shared-use (bike) path
7. Community event area
8. Open-air pavilion over small building (includes bathrooms)
9. Amphitheater
10. Lawn
11. Paved push-ramp for cyclists and green infrastructure detention cells
12. Renovated entrance with parking (5 spots)
13. Children's Discovery Garden
14. Basketball court + marble rings
15. Resurfaced rectangular field with subsurface detention
16. Embankment bleachers
17. Renovated bathrooms, concessions, scoreboard
18. Parking (40 spots)
19. Public art opportunity
20. BMX pump track (third-party operator)
21. Trail for BMX access
22. Embankment slides
23. Ropes course (third-party operator)
24. Embankment bleachers and new scoreboard
25. Sculptural overlook + parking (9 spots)
26. Basketball court and play area renovations
27. Renovate Arlington Rec Center
28. Manage invasive species with native planting
29. Seating at Jurassic Valley Overlook
30. 1040 Trail and interpretive art

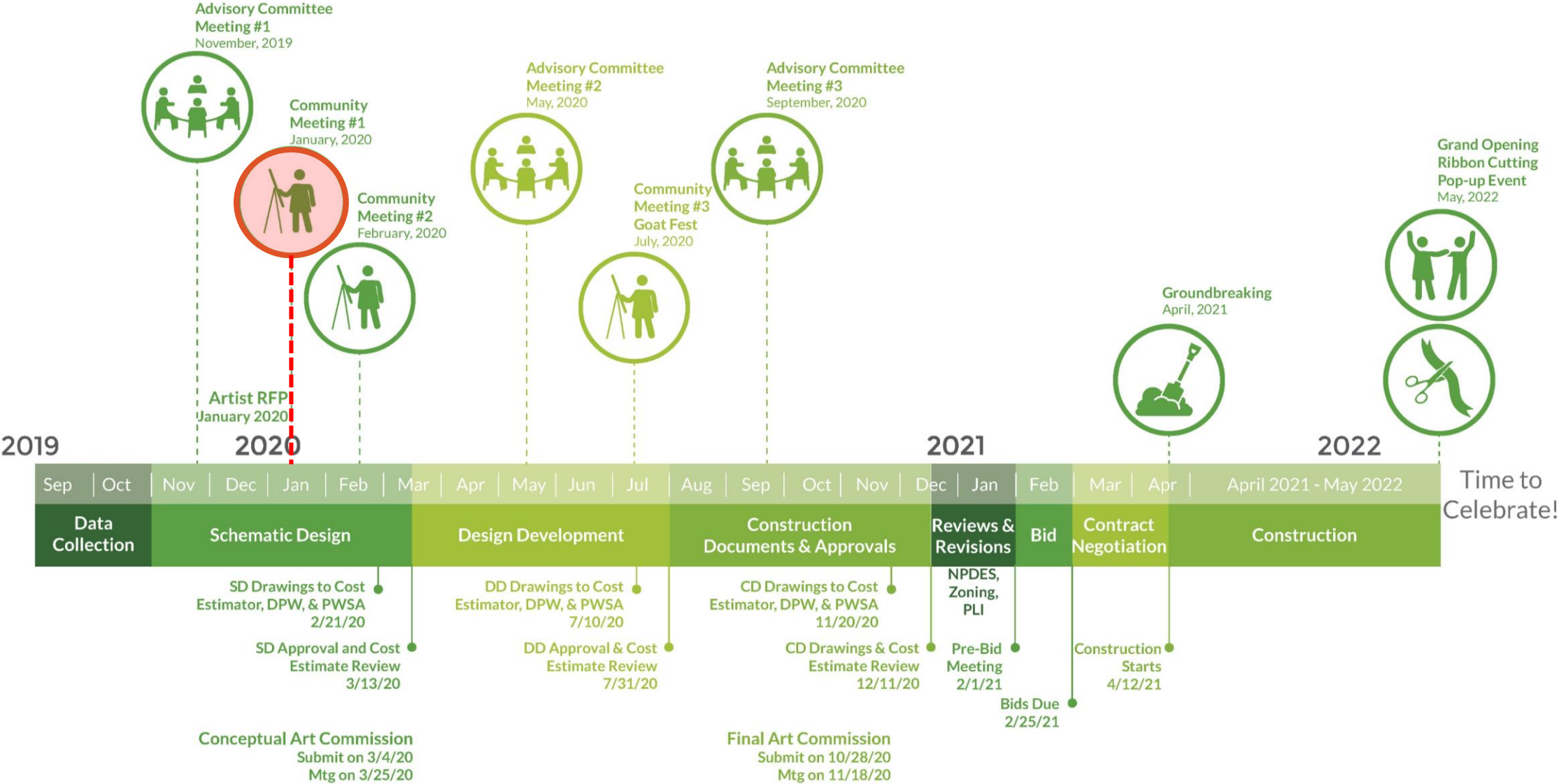
- Phase I CD Scope
- Grading and Paths Only

31. East/West Connector Trail
32. Revealed seeps + seating
33. Tombstone Trail considered for ADA accessibility
34. Trail through plateau and wetlands +picnic platforms
35. New Sierra St. entrance, steps + Sierra Connector Trail
36. Canopy overlook
37. Boardwalk and wetlands
38. Mission St. Connector Trail
39. Renovated parking and entrance area with seating
40. Drive gated (vehicle access for garden members)



Image by Studio Bryan Hanes

# SOUTH SIDE PARK PHASE I DESIGN IMPROVEMENTS SCHEDULE







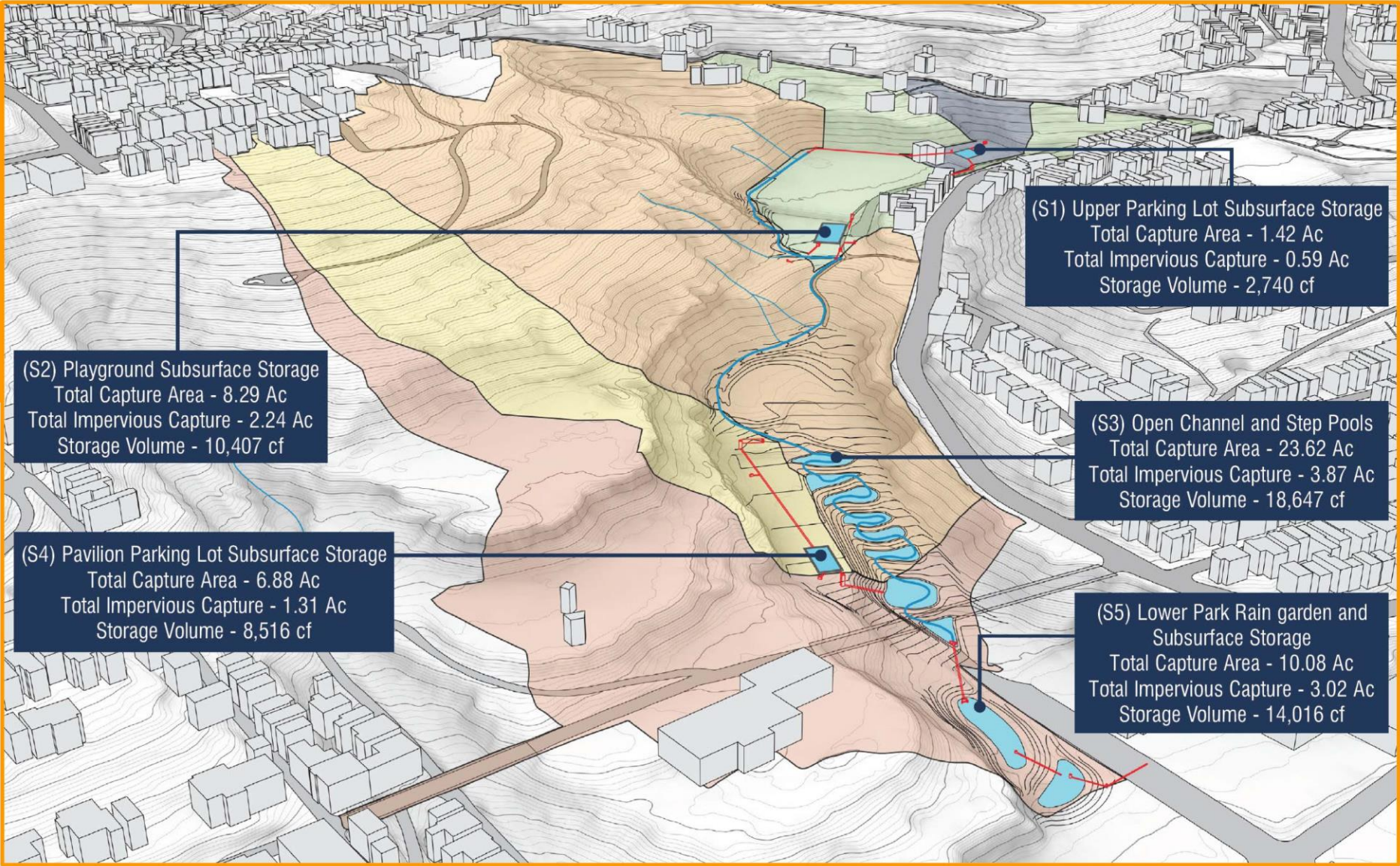
SOUTH SIDE PARK – SCHEMATIC DESIGN SITE PLAN



# ENGINEER'S RECOMMENDATION : PARK CAPTURE

Park Total Impervious Capture: 11 AC

Only captures areas presently draining directly to the park











- Various storage nodes throughout the valley to detain runoff and slow release into the open swale.
- Each node will have overflow connections to the combined sewer to engage during large storms.
- Underground systems will all have access for long term maintenance





EXISTING CONDITIONS







**SOUTH SIDE PARK – DISCOVERY GARDEN AND RAIN GARDEN**





SOUTH SIDE PARK - PLAYGROUND





EXISTING CONDITIONS









EXISTING CONDITIONS







EXISTING CONDITIONS







Stepped Stormwater Garden Section A



Stepped Stormwater Garden Section B









EXISTING CONDITIONS



S. 21ST STREET

JOSEPHINE STREET

Entrance  
Median

Rain Garden  
Stormwater  
Storage





**PLANTED RAIN GARDEN**  
WITH UNDERGROUND STORAGE

Image by Studio Bryan Hanes

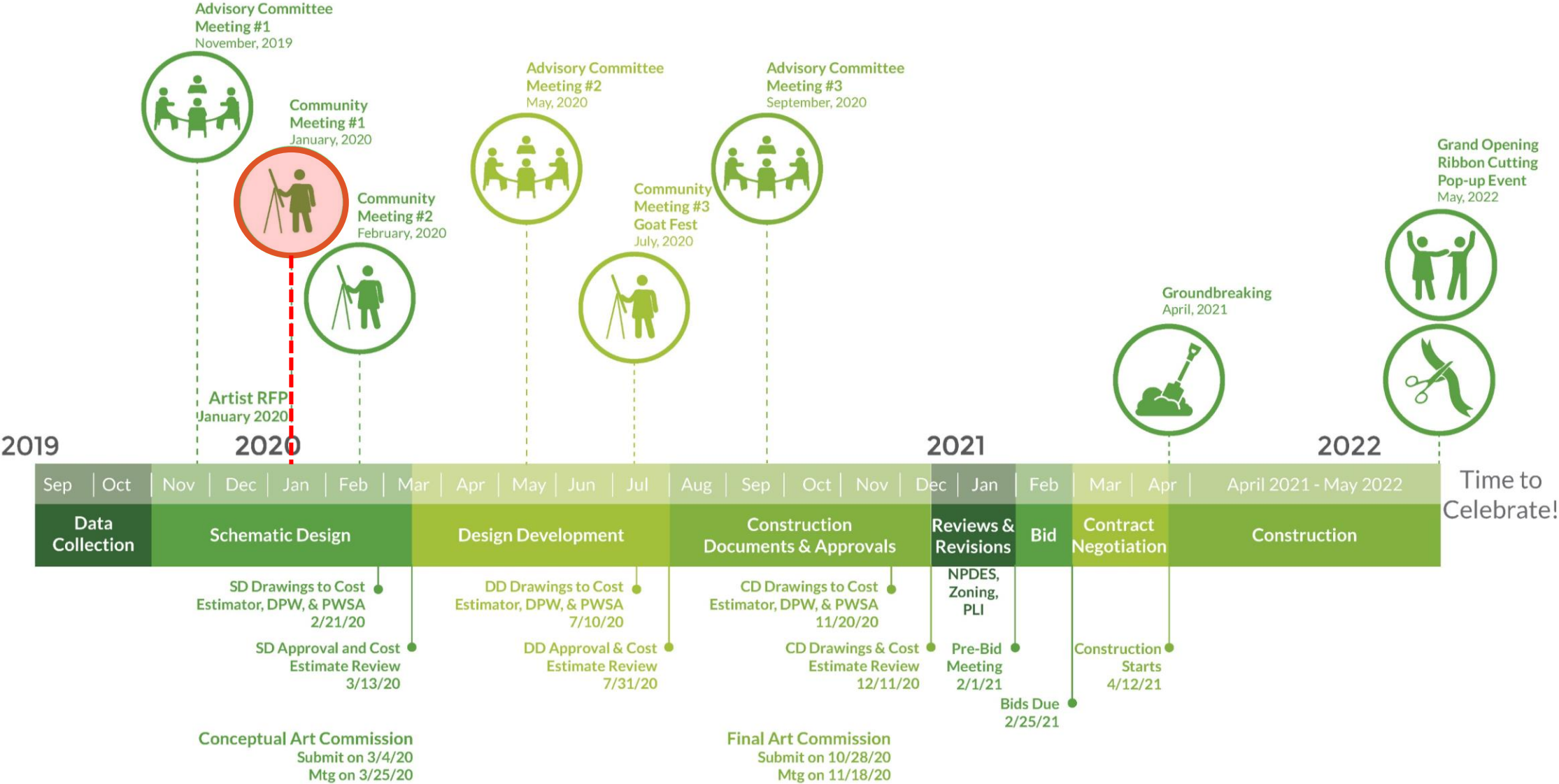
**ethos**  
collaborative  
water-energy-climate-community

**SOUTH SIDE PARK – 21<sup>ST</sup> STREET ENTRANCE STORMWATER STORAGE**

**PASHEK**  **MTR**



# SOUTH SIDE PARK PHASE I DESIGN IMPROVEMENTS SCHEDULE





WE WANT YOUR INPUT !!