



Spring Hill Park Improvements

Community Meeting #2

September 26, 2023

Introductions & Project Team:



Andrea Ketzel

Senior Landscape Architect
Department of Public Works



Jan Raether

Infrastructure Engagement
Specialist
Neighborhood Services



Councilman Bobby Wilson

Council District 1

Consultants:

Pashek+MTR

Landscape Architecture

Graves Design Group

Architecture

Tabon Engineering

Surveying, Civil Engineering

Santangelo & Lindsay

Electrical Engineering



Meeting Agenda

- Meeting Objective and Norms
- Project Goals & Schedule
- Summary of Engagement
- Revised Concept Review
 - Play Equipment
 - Park Building
 - Park Amenities
- Q&A
- Next Steps and Closing

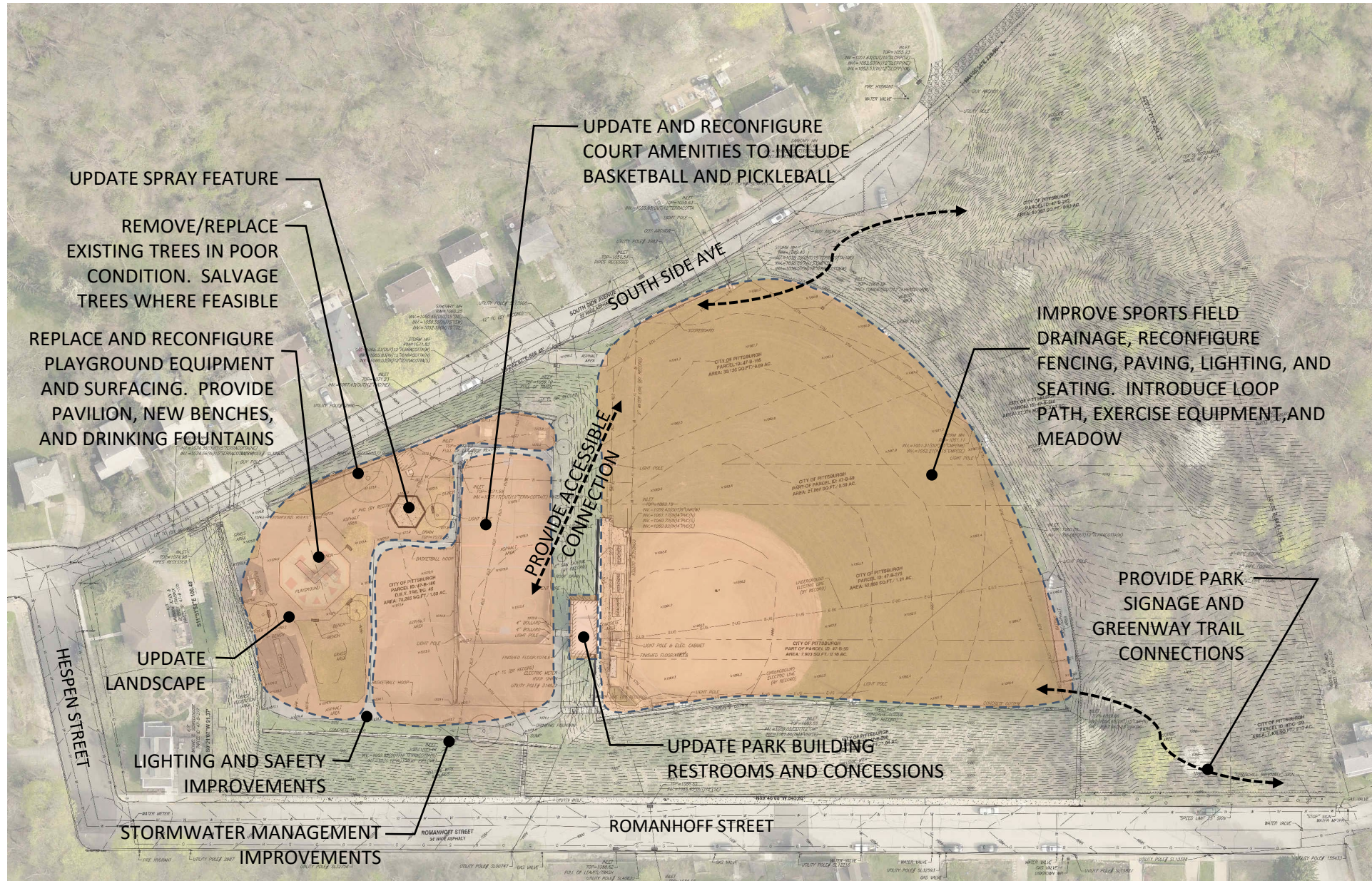


Meeting Norms

- Save questions for end of presentation, or type them in the chat
- During Q&A, please "raise" virtual hand and moderator will call on you to speak
- Respect each other's time
- One speaker at a time
- Create a space where all perspectives are welcomed; agree to disagree in peace
- Agree to shared ownership of these norms



This project will accomplish:



Schedule



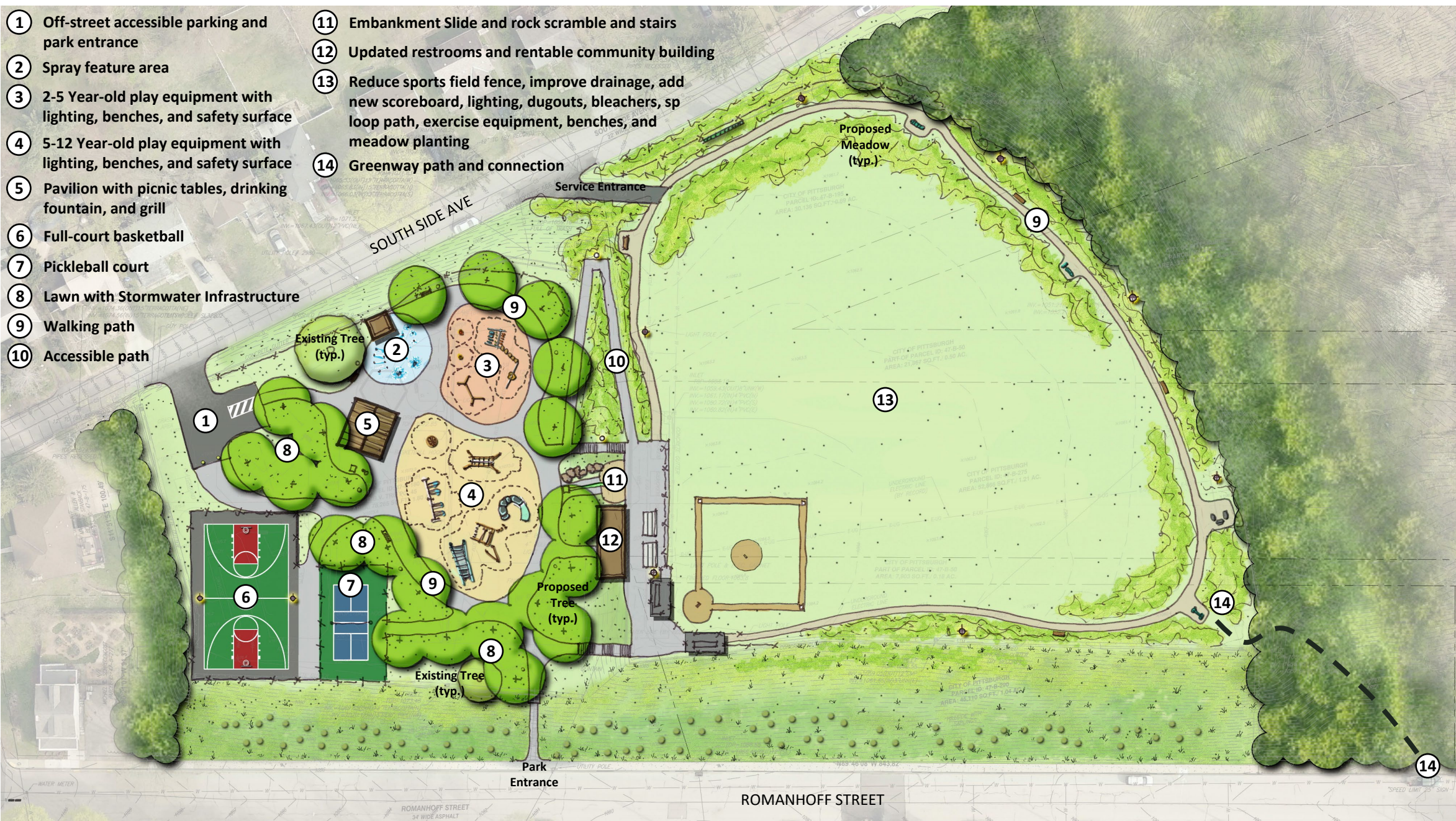
Engage PGH Feedback

- 100+ Responses!
- Overall Preference for Concept #1
- Expand half-court basketball to full-court basketball
- NO dek hockey
- Include Pickleball
- Expand play areas and spray pad, as much as possible.
- Include shelter and grill from Concept #2
- Expand walking path around entire space, including ballfield
- Reduce outfield fence, add meadow plantings and soften impact of ballfield to be a more multi-use green space
- Include exercise equipment from Concept #2 and install along walking path
- Include parking, if possible



Revised Concept

- ① Off-street accessible parking and park entrance
- ② Spray feature area
- ③ 2-5 Year-old play equipment with lighting, benches, and safety surface
- ④ 5-12 Year-old play equipment with lighting, benches, and safety surface
- ⑤ Pavilion with picnic tables, drinking fountain, and grill
- ⑥ Full-court basketball
- ⑦ Pickleball court
- ⑧ Lawn with Stormwater Infrastructure
- ⑨ Walking path
- ⑩ Accessible path
- ⑪ Embankment Slide and rock scramble and stairs
- ⑫ Updated restrooms and rentable community building
- ⑬ Reduce sports field fence, improve drainage, add new scoreboard, lighting, dugouts, bleachers, sp loop path, exercise equipment, benches, and meadow planting
- ⑭ Greenway path and connection



Bird's Eye View



Ages 5-12 Play Equipment



Modular Play Structure



Climbing Structure



Spinner



Pendulum Swing



Inclusive Swings



Embankment Slide



Hangouts & Hideaways

Ages 2-5 Play Equipment



Spinner Seats



Springers



Modular Play Structure



Swings



Playhouse

Spray Features / Exercise Equipment



Misting



Overhead Spray



Ground Jets



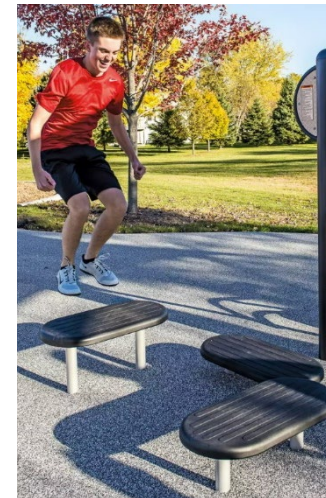
Push-up Bars



Stretch Station



Ab Crunch



Plyometrics



Parallel Bars

Park Building Program Discussion



- Renovate for Community Use/Rentals
 - Party space, community meetings, etc.
 - Update Kitchen
- OR Restore Concessions and Press Box
- Provide Public-Facing Restrooms

Standard Park Features



Next Steps and Closing

- Fall - Winter 2023:
 - Development Activities Meeting
 - Public Art & Civic Design Commission
- Winter - Summer 2024:
 - Construction Documents & Permitting
- Summer - Fall 2024:
 - Bid/ Begin Construction
- Follow Engage PGH for updates!

<https://engage.pittsburghpa.gov/spring-hill>





Thank You!

Questions?

Contact: neighbor@pittsburghpa.gov