



Parking Lot Bridge Over S.R. 0051

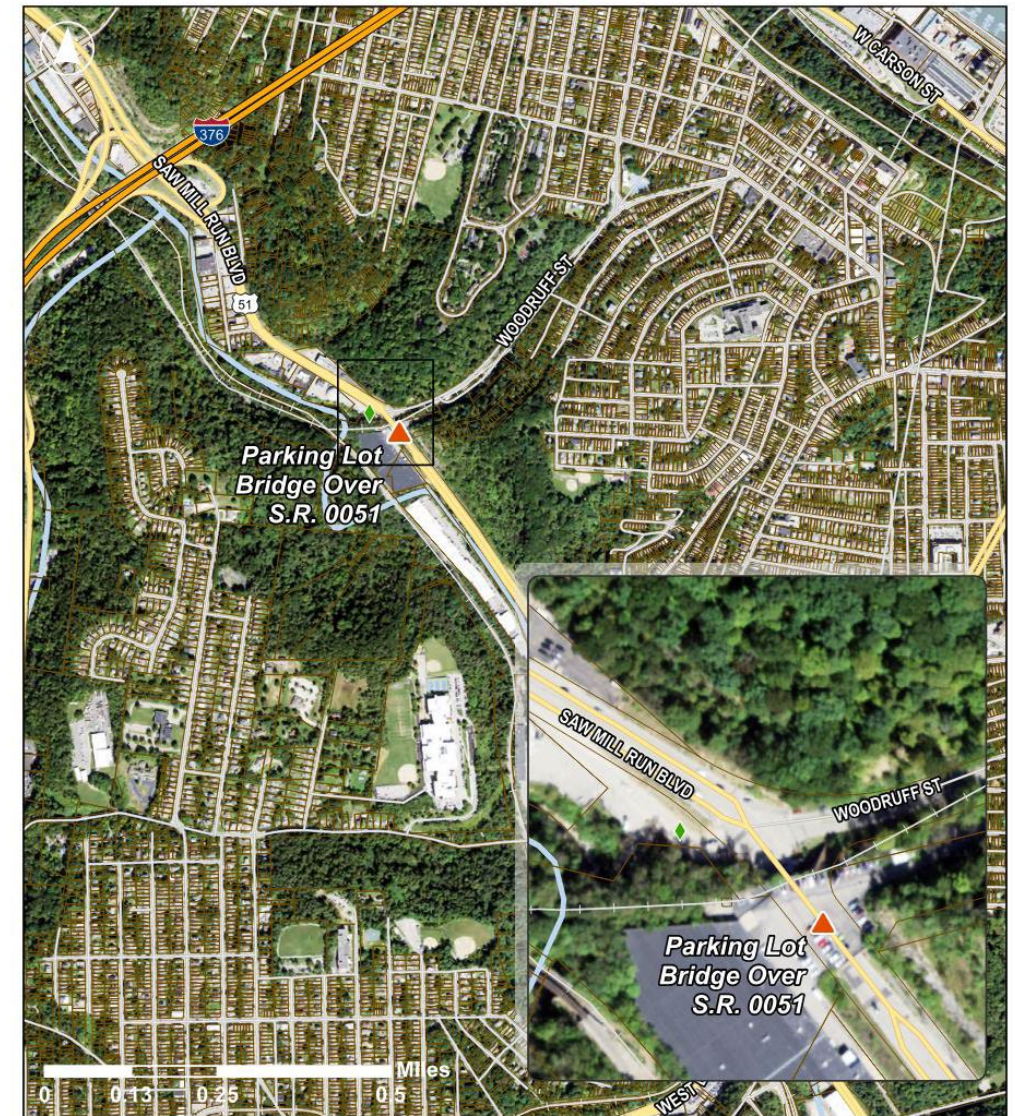


Overview

- Project Background
- Purpose
- Need
- Construction Impacts
- Project Schedule
- How to Stay Informed

Project Background

- Bridge built in 1930 to allow Saw Mill Run Boulevard to be built under the Pittsburgh and West Virginia Railroad
- Most recently served as a parking lot and delivery truck access to the adjacent property owner
- Temporary supports and repairs were installed at the steel bent columns in 2022 and 2023 to repair identified deficiencies
- Closed by the City of Pittsburgh partially in February 2023 and completely with pinned barriers in December 2023 to through traffic and parked cars



Sources: Allegheny County GIS (2024), PASDA (2024), TIGER (2022), USGS NHD (2018), STV Inc. (2024)

Legend

- | | |
|----------------------|-------------|
| ▲ Bridge Location | Interstate |
| ◆ Trailhead Location | State Roads |
| ▭ Parcels | Local Roads |
| ■ Water | Railroad |

Parking Lot Bridge Over S.R. 0051
City of Pittsburgh, PA
Project Location Map

Purpose

The purpose of the project is to prevent the existing parking lot bridge over S.R. 0051 from failing.

Need

1. Facility Deficiencies

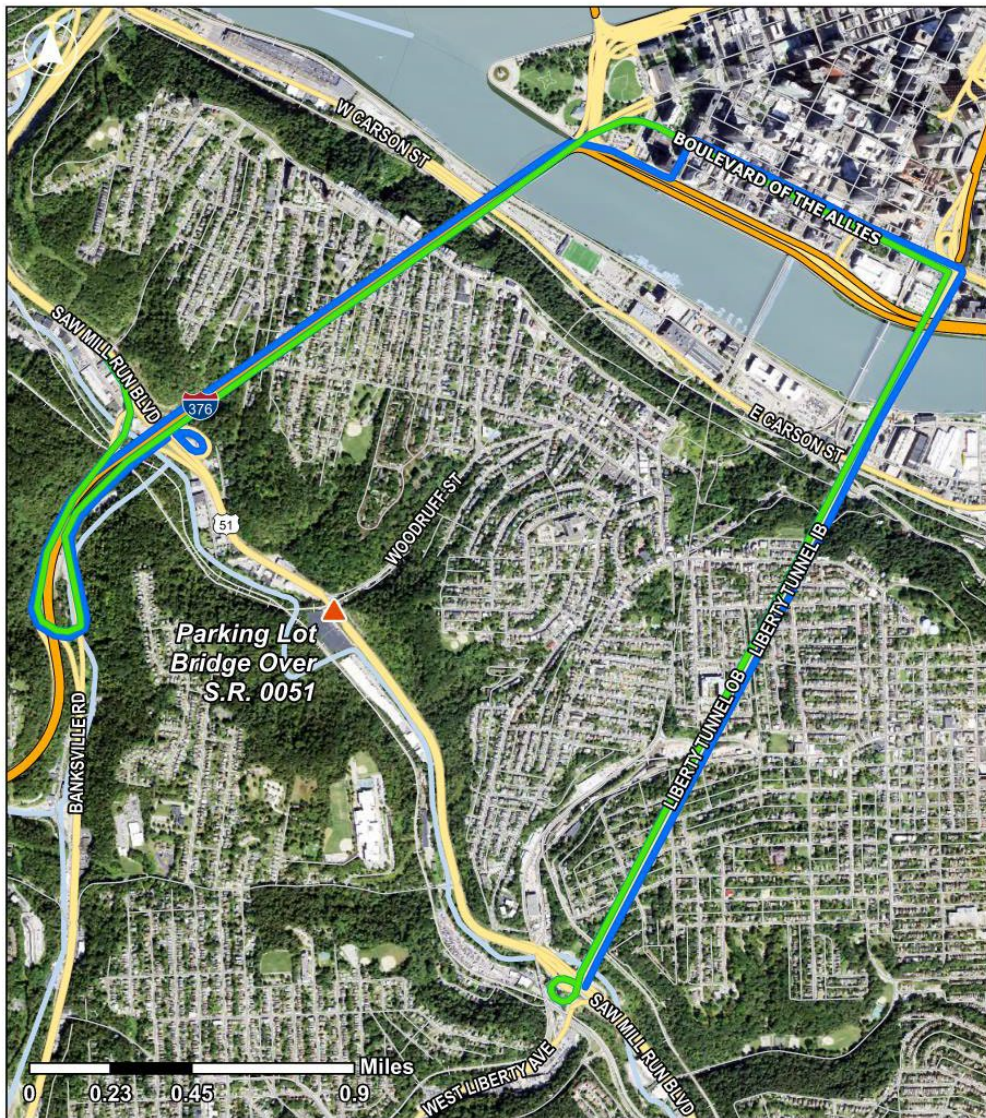
- The existing bridge is in poor condition.
- The structure is showing deterioration with section loss and holes in multiple webs and flanges.
- Temporary towers were installed to support Beam 19 due to section loss.
- The right wingwall exhibits cracking and spalling throughout.
- Barriers have been pinned to the bridge deck to restrict access to the structure.
- Deck pavement exhibits widespread cracking.



Images from Interim Bridge Safety Inspection Reports, City of Pittsburgh and Pennsylvania Department of Transportation Engineering District 11-0, and January 24, 2024 field visit, STV

Construction Impacts

- Proposed detours currently being evaluated for both cars and trucks and for Southbound and Northbound traffic.
- Proposed detours will be in place during full closure of S.R. 0051.
- In addition, there could be intermittent lane closures on S.R. 0051 during the construction activities.
- During closures, local traffic will be accommodated for business and property access between Crane Avenue and Woodruff Street.

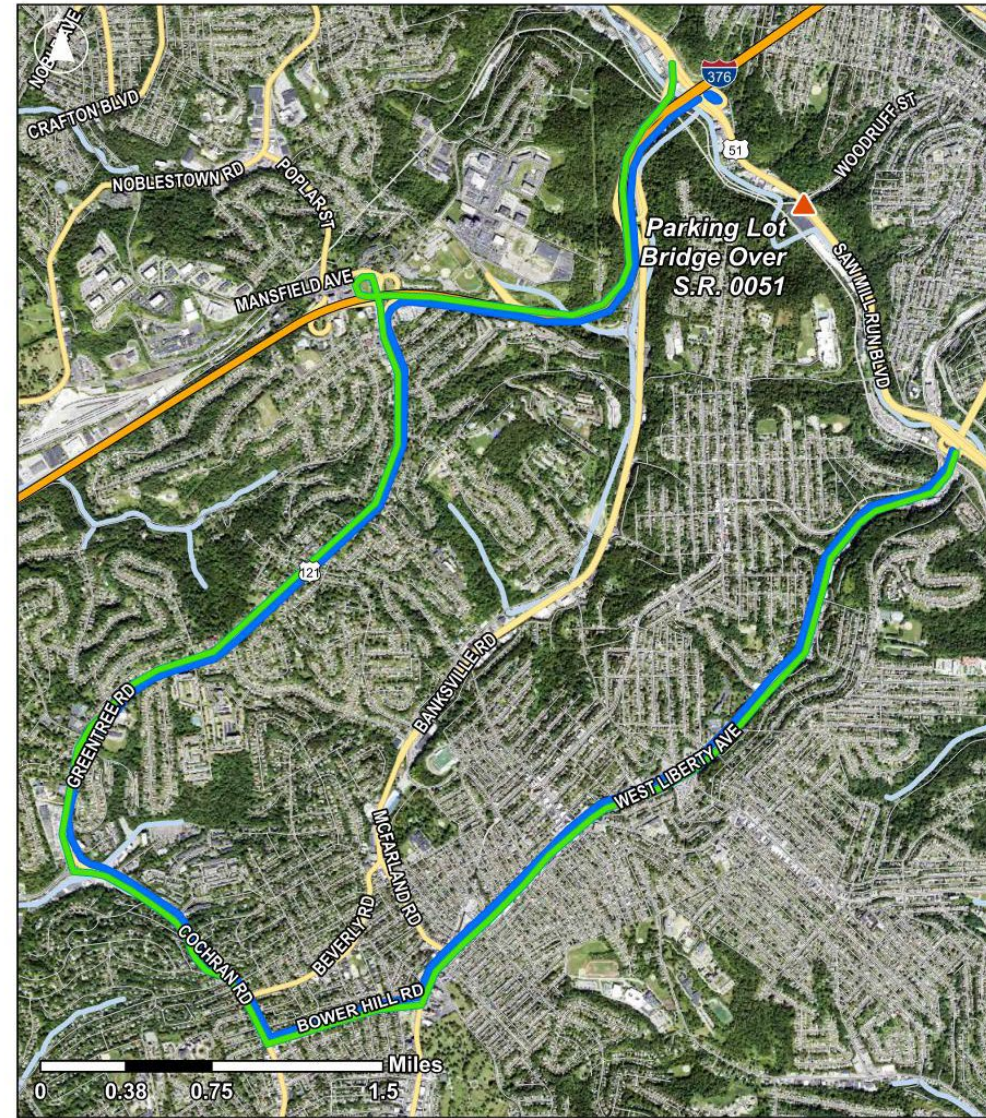


Sources: Allegheny County GIS (2024), PASDA (2024), TIGER (2022), USGS NHD (2018), STV Inc. (2024)

Legend

- | | |
|---------------------|---------------|
| — Southbound Detour | — Railroad |
| — Northbound Detour | — Interstate |
| ▲ Bridge Location | — State Roads |
| — Water | — Local Roads |

Parking Lot Bridge Over S.R. 0051 City of Pittsburgh, PA Proposed Car Detour Map



Sources: Allegheny County GIS (2024), PASDA (2024), TIGER (2022), USGS NHD (2018), STV Inc. (2024)

Legend

- | | |
|---------------------|---------------|
| — Southbound Detour | — Railroad |
| — Northbound Detour | — Interstate |
| ▲ Bridge Location | — Local Roads |
| — Water | — State Roads |

Parking Lot Bridge Over S.R. 0051 City of Pittsburgh, PA Proposed Truck Detour Map

Construction Impacts

- Construction staging locations are currently being evaluated.

Schedule

Preliminary Engineering
Winter 2024

Construction
Summer 2024



Final Design
Winter/Spring 2024

How to Stay Informed

- To stay informed about the project visit:

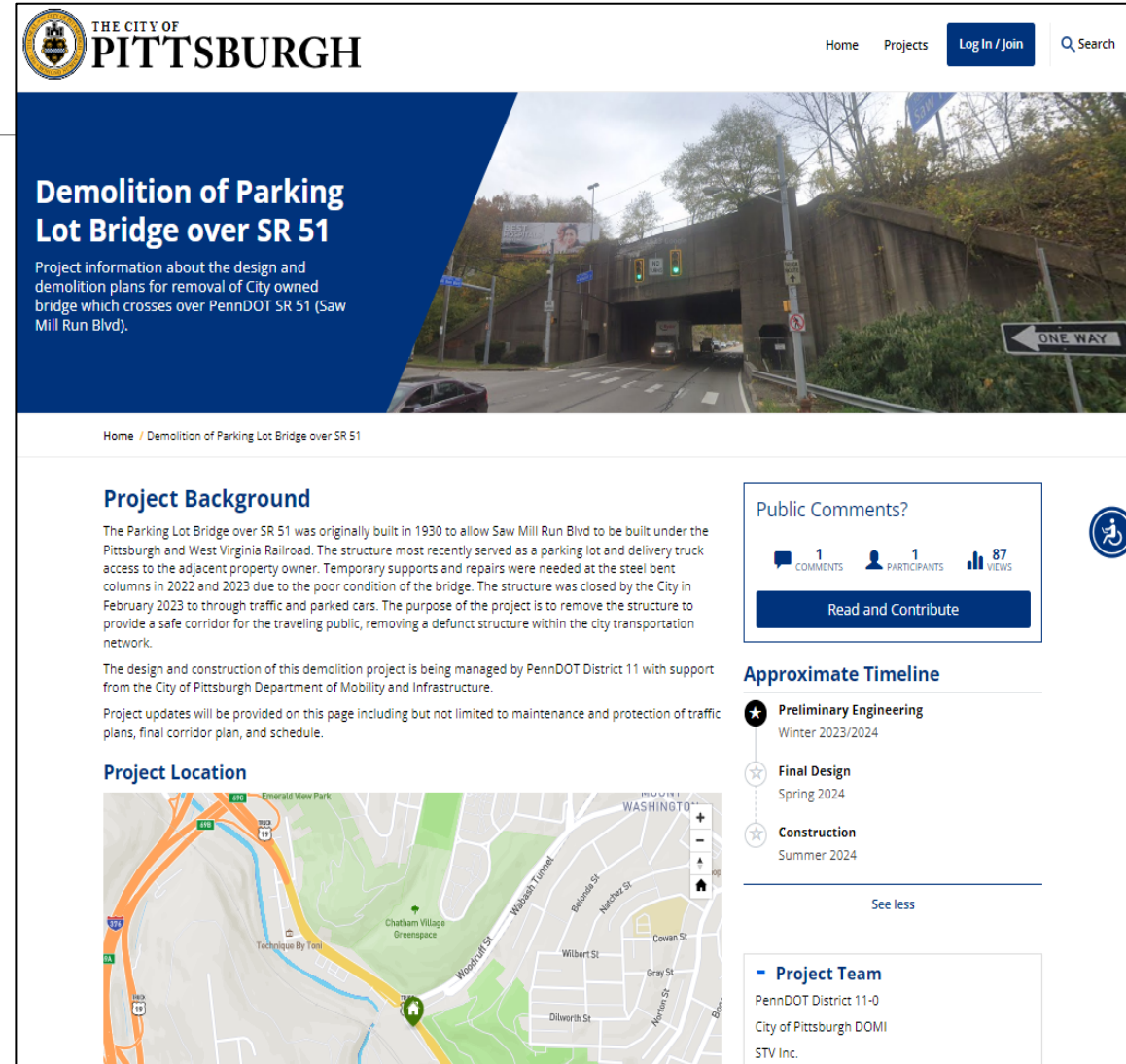
<https://engage.pittsburghpa.gov/demolition-parking-lot-bridge-over-sr-51>

- Subscribe to receive project updates
- Submit questions or comments

- For more information, please contact:

Zachary M. Patterson, P.E.
PennDOT Project Manager
412.429.4864 or zapatterso@pa.gov

Alexis Williams, AICP, PP
STV Public Engagement Coordinator
215.667.9762 or Alexis.Williams@stvinc.com



The screenshot shows the City of Pittsburgh website for the "Demolition of Parking Lot Bridge over SR 51" project. The page features a header with the City of Pittsburgh logo, navigation links (Home, Projects, Log In / Join), and a search bar. The main content area includes a large image of the bridge and a blue banner with the project title. Below the banner, there is a "Project Background" section with text about the bridge's history and the project's purpose. A "Project Location" section includes a map of the area. On the right side, there is a "Public Comments?" section with a "Read and Contribute" button, and an "Approximate Timeline" section showing the project phases: Preliminary Engineering (Winter 2023/2024), Final Design (Spring 2024), and Construction (Summer 2024). A "Project Team" section lists the PennDOT District 11-0, City of Pittsburgh DOMI, and STV Inc.

THE CITY OF PITTSBURGH

Home Projects Log In / Join Search

Demolition of Parking Lot Bridge over SR 51

Project information about the design and demolition plans for removal of City owned bridge which crosses over PennDOT SR 51 (Saw Mill Run Blvd).

Home / Demolition of Parking Lot Bridge over SR 51

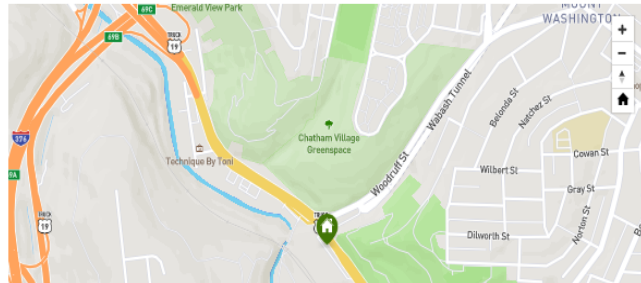
Project Background

The Parking Lot Bridge over SR 51 was originally built in 1930 to allow Saw Mill Run Blvd to be built under the Pittsburgh and West Virginia Railroad. The structure most recently served as a parking lot and delivery truck access to the adjacent property owner. Temporary supports and repairs were needed at the steel bent columns in 2022 and 2023 due to the poor condition of the bridge. The structure was closed by the City in February 2023 to through traffic and parked cars. The purpose of the project is to remove the structure to provide a safe corridor for the traveling public, removing a defunct structure within the city transportation network.

The design and construction of this demolition project is being managed by PennDOT District 11 with support from the City of Pittsburgh Department of Mobility and Infrastructure.

Project updates will be provided on this page including but not limited to maintenance and protection of traffic plans, final corridor plan, and schedule.

Project Location



Public Comments?

1 COMMENTS 1 PARTICIPANTS 87 VIEWS

Read and Contribute

Approximate Timeline

- ★ Preliminary Engineering
Winter 2023/2024
- ★ Final Design
Spring 2024
- ★ Construction
Summer 2024

See less

Project Team

- PennDOT District 11-0
- City of Pittsburgh DOMI
- STV Inc.