

# TRHT

## Maintenance & Management Plan

**Kickoff Meeting**  
10 January 2024





REMOTE ACCESS TO QUESTIONS:

[https://miro.com/app/board/uXjVMj6BCy0=](https://miro.com/app/board/uXjVMj6BCy0=/)



# Meet the Team



## Client

DOMI will represent the city and other trail user, maintainer, and owner interests as the client for this project.



**evolve**  
environment :: architecture

Consulting Team Lead + Planning Consultant  
evolveEA will lead coordination with the city and collaboration with the planning team.



**ethos**  
collaborative  
water-energy-climate-community



## Planning Team

Oikos Ecology, Ethos Collaborative, and Civic Mapper will provide data collection and analysis, and best practices.

**“People remember what the riverfront was before:  
an industrial area, a wasteland,  
now their grandchildren are saying,  
this was where I had my first bike ride.”**

**— Tom Baxter via Rails to Trails Conservancy (04/07/17)**

# TODAY'S AGENDA

5 min.      Introductions: Who is involved and what are their roles?

20 min.    Project Overview + Scope

- What's a maintenance and management plan and why do one?
- What decisions can we make in this project?

35 min.    Key Questions + Discussion

- How can this project be of value to you?
- What data can you contribute?
- What's the right level of public engagement?

# Meet the Consultants



Urban Planning +  
Design Consultant



**Breen Masciotra,**  
**AICP, EcoDistricts AP**  
Senior Project  
Manager



**Claudia Saladin,**  
**ASLA, LEED AP**  
Senior Landscape  
Architect



Engineering  
Consultant



**Damon Weiss, PE**  
Engineer



**Barton Kirk, PE**  
Engineer



Ecology Consultant



**Tim Nuttle, PhD**  
Ecologist



Data + Mapping  
Consultant



**Matt Mercurio, GISP**  
Data Specialist



# What is a maintenance and management plan, and why do one?

# The Three Rivers Heritage Trail...

Is a **natural** asset.

Is **transportation** infrastructure.

Is a regional **destination**.

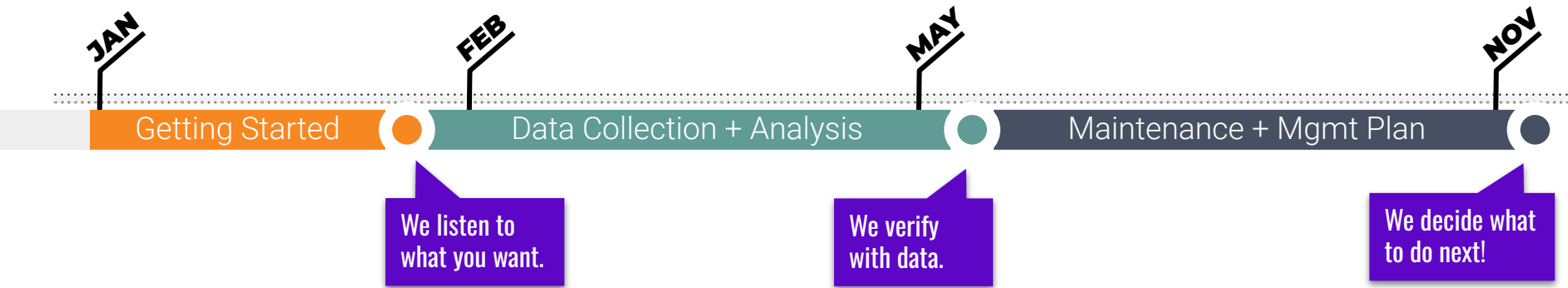


Photo by KubotaMapDan



# Critical Issues

- ❖ TRHT is a key component of the city's **active transportation** network.
- ❖ TRHT is a key component of the city's **stormwater and flood mitigation** landscape.
- ❖ TRHT is **collaboratively managed**.
- ❖ There are **limited data** regarding both natural and built conditions along the entirety of the trail.
- ❖ There are **gaps** in the TRHT (Strip, Lawrenceville, and Hazelwood).
- ❖ There is no unified plan to ensure **efficient and effective maintenance**, improvements, and building of new trail segments.
- ❖ There is no unified plan outlining clear **management roles and responsibilities** in trail maintenance and programming.



## The Three Rivers Heritage Trail Maintenance & Management Plan...

Articulates the **community needs** from existing conditions.

Develops a **maintenance plan** for the future.

Designs a **management plan** with actionable next steps.



QUESTION FOR YOU:

**What is the value of this project to you?**



STAKEHOLDER QUESTION:

**What are the existing challenges in trail maintenance today?**





Photo by D. Majesty

# How does a maintenance and management plan get made?

# The Three Rivers Heritage Trail Maintenance & Management Plan will . . .

Build **more complete data** regarding trail conditions.

Recommend a **schedule and budget** for regular trail maintenance.

Identify **roles and responsibilities** for trail ownership, maintenance, and management.

**COLLECT + ANALYZE  
TREE CANOPY AND  
INVASIVE PLANT DATA.**

**VALIDATE + UPDATE  
RIPARIAN ZONE  
CONDITIONS.**

**DEVELOP  
ECOLOGY  
MANAGEMENT  
PLAN.**

**COLLECT DATA ON  
TRAIL SURFACE  
AND DRAINAGE.**

**DOCUMENT AND  
ASSESS LIGHTING  
CONDITIONS.**

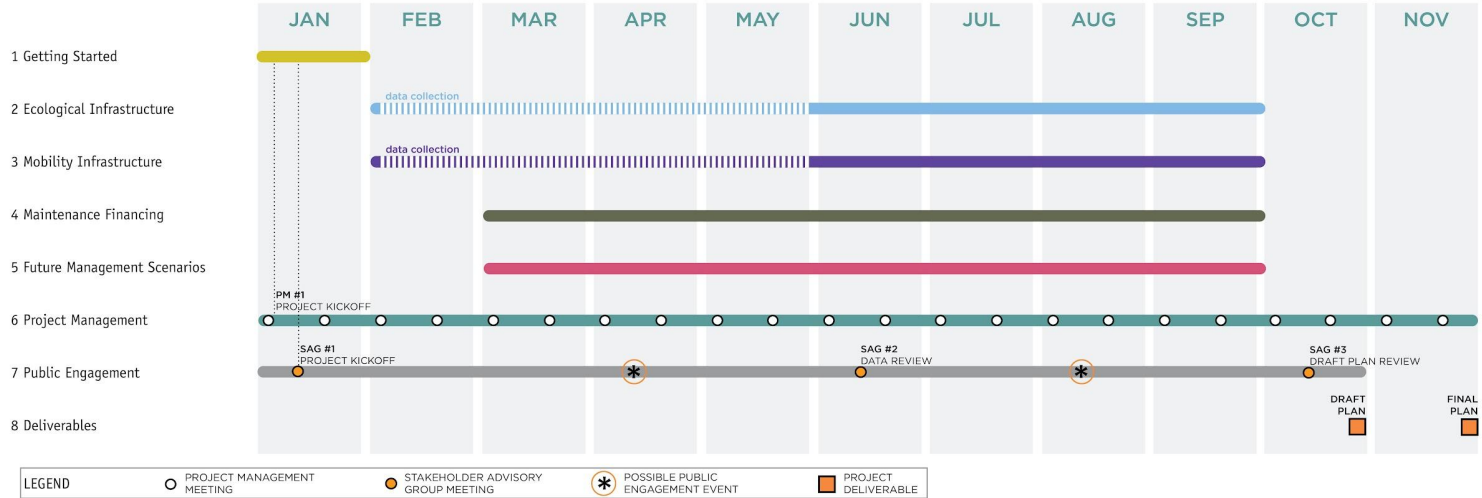
**DEVELOP  
MOBILITY  
MANAGEMENT  
PLAN.**

**DETERMINE  
COSTS AND  
IDENTIFY  
FUNDING.**

**DEVELOP TRAIL  
MAINTENANCE  
RESPONSIBILITY  
MATRIX.**

**ENGAGE  
STAKEHOLDERS  
AND THE PUBLIC.**

# Project Schedule



## SCOPE OF WORK

### 1 Getting Started

- 1.1 Confirm Project Goals
- 1.2 Review Previous Analysis

### 2 Ecological Infrastructure

- 2.1 Canopy and Invasive Plant Management
  - 2.1.1 Collect field data on current tree canopy and invasive conditions.
  - 2.1.2 Assess the current canopy and losing rate.
- 2.2 Riparian Zone Restoration and Preservation
  - 2.2.1 Validate and update (as needed) riparian zone conditions as documented by ACE.
  - 2.2.2 Assess existing retaining walls.
- 2.3 Ecology Management Plan
  - 2.3.1 Identify best ecological practices for achieving project goals.
  - 2.3.2 Provide a list of recommended canopy trees.
  - 2.3.3 Recommend retaining wall repair strategies.
  - 2.3.4 Develop and apply a trail segment prioritization methodology.
  - 2.3.5 Identify short- (0-5 year) and long-term (6-20 year) priorities for ecological interventions.
  - 2.3.6 Map priority projects by time range.

### 3 Mobility Infrastructure

- 3.1 Trail Surface and Drainage
  - 3.1.1 Collect field data on current trail surface and drainage conditions.
  - 3.1.2 Assess current trail conditions.
- 3.2 Trail Lighting
  - 3.2.1 Develop a plan for lighting assessment.
  - 3.2.2 Collect field data on current lighting fixtures.
  - 3.2.3 Assess trail lighting.
- 3.3 Mobility Management Plan
  - 3.3.1 Identify best mobility practices for achieving project goals.
  - 3.3.2 Outline routine surface maintenance and repaving schemes.
  - 3.3.3 Develop a plan for developing a lighting standard and maintenance of existing and future trail lighting.
  - 3.3.4 Develop a plan for expansion of lighting and associated cost.
  - 3.3.5 Develop and apply a trail segment prioritization methodology.
  - 3.3.6 Identify short- (0-5 year) and long-term (6-20 year) priorities for mobility interventions.
  - 3.3.7 Map priority projects by time range.

### 4 Maintenance Financing

- 4.1 Determine the replacement, maintenance, and equipment costs of different trail segment and average per mile costs.
- 4.2 Identify funding streams for the maintenance of each segment of the trail.

### 5 Future Management Scenarios

- 5.1 Develop a Trail Maintenance Responsibility Matrix that details the roles and responsibilities of each trail partner.
- 5.2 Evaluate current staffing situation of the City and recommend future staffing plan.

### 6 Project Management

- 6.1 Hold internal consultant team meetings.
- 6.2 Meet biweekly with DMI staff.

### 7 Public Engagement

- 7.1 Attend any public meeting or in person engagement.
- 7.2 Provide necessary digital materials (e.g., PowerPoint presentation, fact sheets, FAQ for distribution, banners, and posters) for the community engagement.
- 7.3 Analyze the public inputs collected and received by the City, evaluate their feasibility, and incorporate them into the plan.

### 8 Deliverables

- 8.1 photos collected during the project
- 8.2 data collected and analyzed during the project
- 8.3 final plan document



**QUESTION FOR YOU:**

**What information can you contribute to our understanding of the TRHT?**





**QUESTION FOR YOU:**

**What would be the most useful deliverable to you?**



What decisions can we make  
in this project?

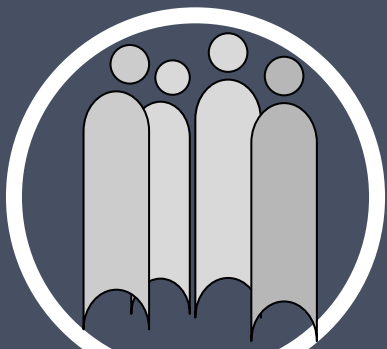
# Decisions

## The TRHT M&MP will...

- Identify best practices for achieving project goals.
- Provide a list of recommended canopy trees.
- Recommend retaining wall repair strategies.
- Outline routine surface maintenance and repaving schemes.
- Develop a plan for developing a lighting standard, maintenance of existing and future trail lighting, and expansion of lighting.
- Develop and apply a trail segment prioritization methodology.
- Identify short- (0-5 year) and long-term (6-20 year) priorities for interventions.
- Map priority projects by time range.
- Determine the replacement, maintenance, and equipment costs of different trail segments and average per mile costs.
- Develop a Trail Maintenance Responsibility Matrix that details the roles and responsibilities of each trail partner.
- Analyze the public inputs collected and received by the City, evaluate their feasibilities, and incorporate them into the plan.

## The TRHT M&M will not...

- Design trail improvements.
- Implement trail improvements.



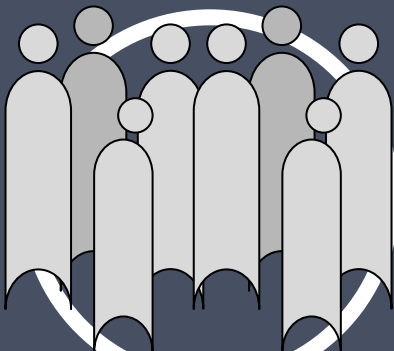
## CORE TEAM

### Reviews & Finalizes:

Meeting places + times  
Meeting invitations  
Project content

### Includes:

City of Pittsburgh DOMI



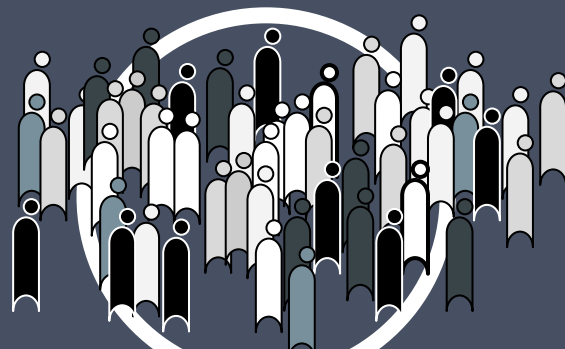
## STAKEHOLDER ADVISORY GROUP

### Co-Creates and Advises:

Meeting invitations  
Project content  
Project vision

### Includes:

Individuals with a  
professional stake in the  
trail's maintenance



## THE COMMUNITY

### Co-Creates:

Plan content  
Project vision

### Includes:

All trail users, property  
owners, etc., who are  
interested in the project



JAN

Getting Started

FEB

Data Collection + Analysis

MAY

Maintenance + Mgmt Plan

NOV

## A typical **PUBLIC PROCESS** involves several touchpoints:

During **community meetings** we request and verify input for the plan.

During **stakeholder advisory group meetings** we discuss the agenda, logistics, and outreach for community meetings.

During the **project management meetings** we make sure that the critical path is being addressed.

# Community Engagement Plan

## PUBLIC MEETING FORMAT

MEETINGS ARE AN  
IMPORTANT WAY TO REACH  
OUT TO THE COMMUNITY. WE  
WILL ESTABLISH

**EXISTING CONDITIONS,  
CRITICAL ISSUES, &  
PRIORITIES**

AND BE CLEAR ABOUT

**POTENTIAL VISIONS.**

Community Meetings will share information about the process, gather information from the lived experience perspective and build an engaged community. Typically meetings will include a combination of:

- **meeting agenda** to encourage active listening
- **introductory activity** to build a sense of community and to introduce the topic
- **content** to build shared vocabulary and to enable informed decision-making.
- **breakout activities** for group learning and decision making, serves as a feedback loop to the team and community.



QUESTION FOR YOU:

**What is the right level and type of community engagement for this project?**



QUESTION FOR YOU:

**Who is missing from this stakeholder group?**



# Conclusions + Reflections

Additional questions  
or comments?

Contact:  
Breen Masciotra, Consultant Project Manager  
[breen@evolveea.com](mailto:breen@evolveea.com)

