



Stanton Ave Complete Street: Phase 2

**Public Meeting
Wednesday March 13, 2024**

Paige Anderson, Project Manager, DOMI
Jan Raether, Neighborhood Services, Mayor's Office

Agenda

- Welcome and Introductions
- Review of meeting norms
- Safety Overview
- ZOOM Overview
- Purpose of the meeting
- Project Context
- Proposed improvements
- Questions

Introductions

- **Paige Anderson**, Project Manager, DOMI
- **Katy Trupo**, Project Engineer, DOMI
- **Jan Raether**, Infrastructure Engagement Specialist, Mayor's Office
- **Laura Tsutsui**, Digital Engagement Coordinator—
Neighborhood Services, Mayor's Office
- **Ashley Bryant**, Neighborhood Engagement Coordinator,
Mayor's Office

Meeting Norms

- **Physical and psychological safety**
- **Listen to learn**
- **Disagree respectfully**
- **Appreciate differences**
- **Be open to new ideas**
- **Be present**

Safety Overview

- **Location of exits**
- **First Aid Locations**
 - **AED location if available**
- **Presence of someone CPR Certified**
- **Emergency Contact**
 - **In the event of an emergency, Jan Raether, will call 9-1-1**

Zoom Overview

- Please remain muted
- "Raise" your hand to ask a question verbally
- Use the chat function to have staff ask a question on your behalf

Purpose of the meeting

The purpose of the meeting is to share the safety context and planned improvements along the Stanton Avenue corridor between Chislett and Heberton/Meadow.

Where We're At

2017: City of Pittsburgh DOMI installs first quick-build traffic calming measures.

2020: Bike+ Plan identified Stanton Ave between Butler St and Highland Ave as a corridor connection.

2022: Related projects constructed by DOMI.

- Stanton Ave Phase 1, McCandless Ave to Chislett St, a traffic calming corridor project including bike climbing lanes.
- Stanton/Negley Traffic Signal.



Where We're At

2023: Capital budget funding secured by CD7 for Stanton Phase 2.

- DOMI collected data.
- Stakeholder Corridor Walkthrough
 - Attendees: DOMI, Council District 7, Mayor's Office, BikePgh, Village Collaborative of East Liberty, Highland Park Community Council, Morningside & Stanton Heights Livable Streets
- DOMI installed speed tables between Highland & Meadow/Heberton



Where We're At

2024: City of Pittsburgh re-commits to Vision Zero.

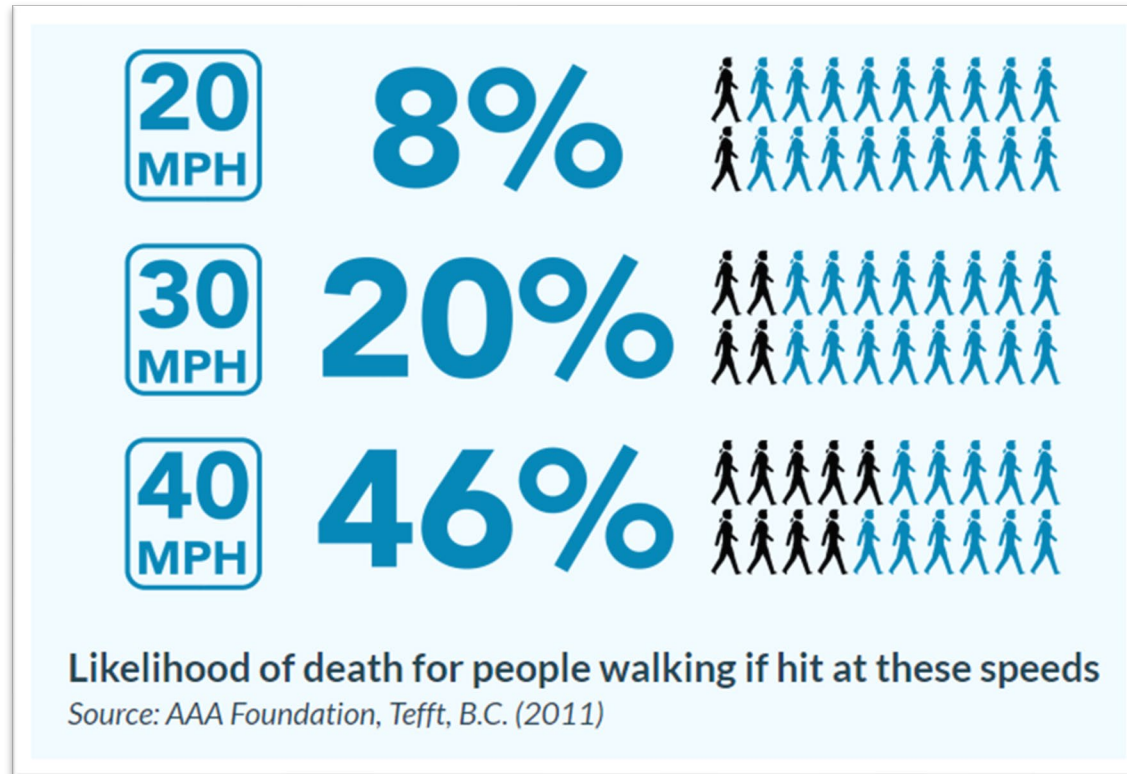
- Stanton Ave is identified on the High Injury Network underscoring the need for safety improvements.
- DOMI begins Stanton Ave Phase 2 project design.

2024 Project Scope: Stanton Ave from Chislett to Heberton with quick-build materials.

2024 Project Goal: Calm traffic and improve safety on Stanton Ave for all users, especially pedestrians, transit riders and cyclists. Provide a bike connection per the Bike+ Plan.



Vision Zero



In 2023, 21 people died in a crash on Pittsburgh's streets.

Since 2019, crashes involving vulnerable road users are up 40%.

But, we know we can improve safety by **lowering vehicle speeds**.

Stanton Ave was recently identified on Pittsburgh's **High Injury Network**, which highlights the 10% of the roads in Pittsburgh responsible for 83% of all serious injury crashes, 79% of all pedestrian crashes & 62% of all bicycle crashes.



Project Context

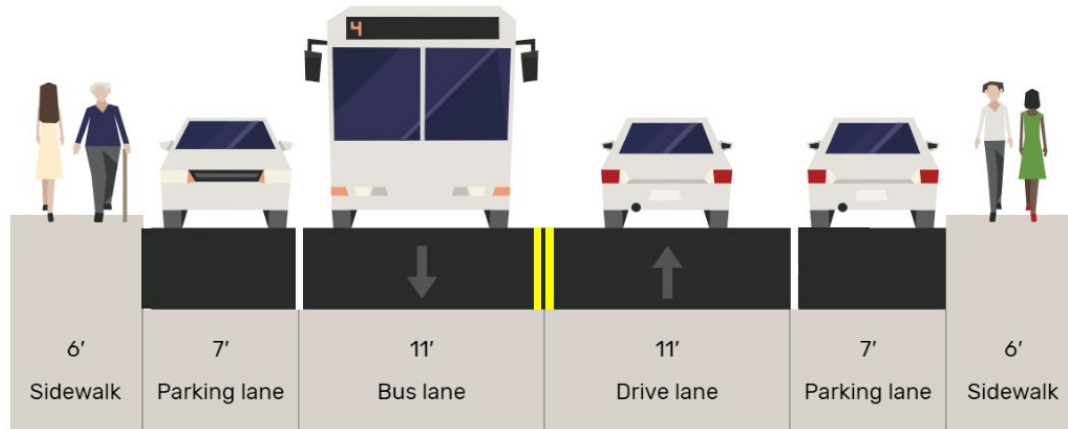


2024 Project Scope: Stanton Ave from Chislett to Meadow with quick-build materials.
2024 Project Goal: Calm traffic and improve safety on Stanton Ave for pedestrians, transit riders and cyclists. Provide bike infrastructure per the Bike+ Plan.



Project Context: Current Conditions

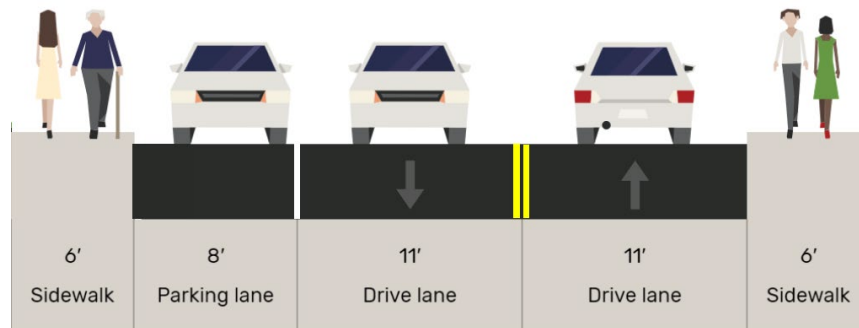
Current Section: Chislett St to Highland Ave



Pre-construction data collected shows:

- 85th percentile speeds: 32 mph
- Percent speeding: 68%

Current Section: Highland Ave to Heberton St



Pre-construction data shows:

- 85th percentile speeds: 30 mph
- Percent speeding: 48%

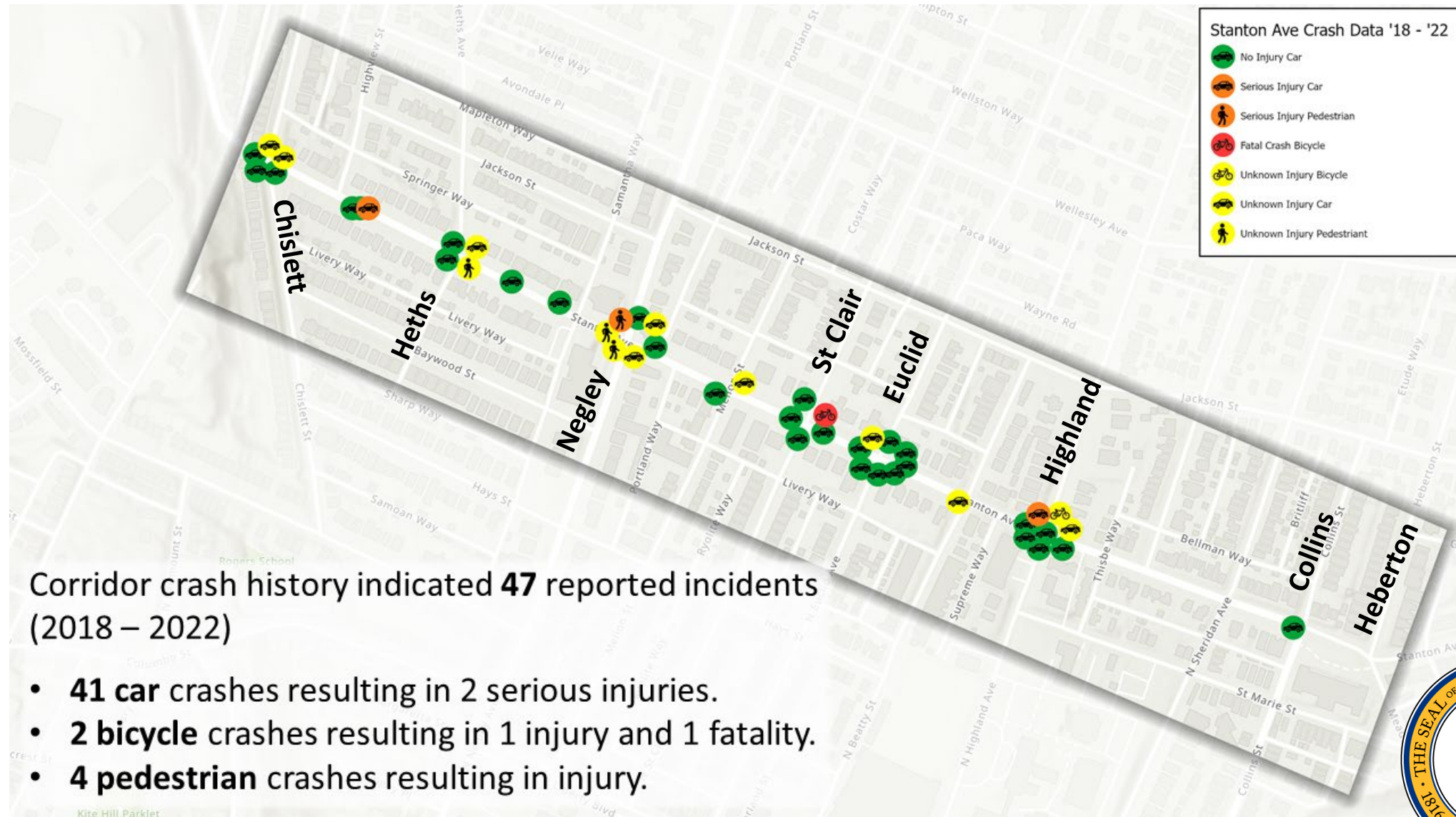
Post-construction data shows:

- **85th percentile speeds: 25 mph**
- **Percent speeding: 28%**

This section already has 2 speed tables, installed October 2023.



Project Context: Crash History



Tools for Traffic Calming

Horizontal Deflection: Bump outs, pedestrian refuge islands

Quick-build Pedestrian Refuge Island example from Ellsworth Ave, Shadyside



Vertical Deflection: Speed tables

Speed tables on Ellsworth Ave, Shadyside.



Analysis of DOMI traffic calming corridor projects throughout the City show:

Traffic Calming Device	Average reduction in 85 th percentile speeds	Average reduction in % speeding
Speed Tables	-7 mph	-56%
Bump outs & Pedestrian Islands	-2.5 mph	-12%



Tools for Traffic Calming: Stanton Ave

In addition to vertical and horizontal deflection designed to reduce corridor speeds, we will employ additional countermeasures proven to improve safety.

Traffic Calming Tool	Area Applied to Here	Anticipated Safety Benefit <small>Source: FHWA Safety Proven Countermeasures</small>
Adding bike lanes to a 2-lane local road	Stanton, Chislett to Highland	30% reduction in total roadway crashes
Adding pedestrian refuge islands	All uncontrolled crossing on Stanton within the project scope: Chislett to Heberton	56% reduction in pedestrian crashes
Adding warranted left-turn lanes	Stanton at Highland, Stanton at Negley*	28%-48% reduction in total intersection crashes

*Stanton at Negley intersection improvements installed early fall 2022.



Proposed Typical Sections & Parking Impacts



Pink Background: CD 7

Green Background: CD 9

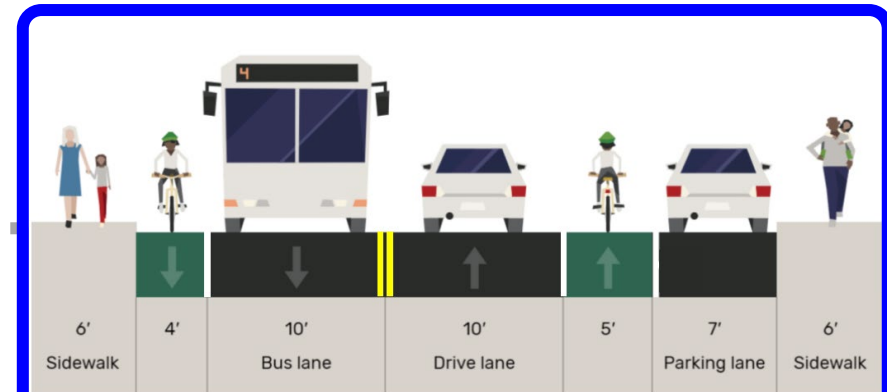
Blue: South curb parking removal

Red: North curb parking removal

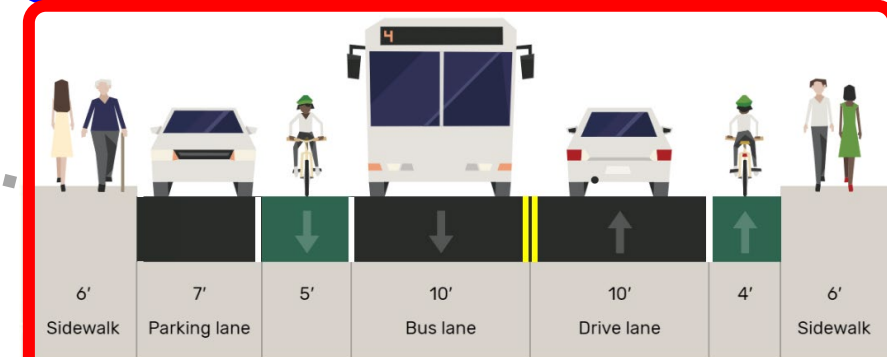
Yellow: minimal parking removal required for pedestrian crossing improvements

South Side

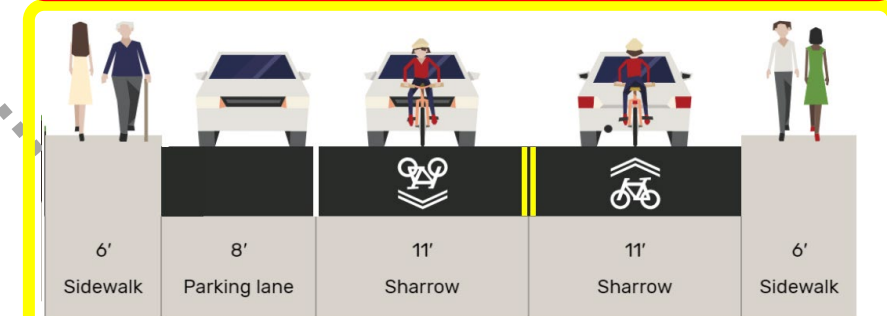
North Side



Blue: Chislett to Negley

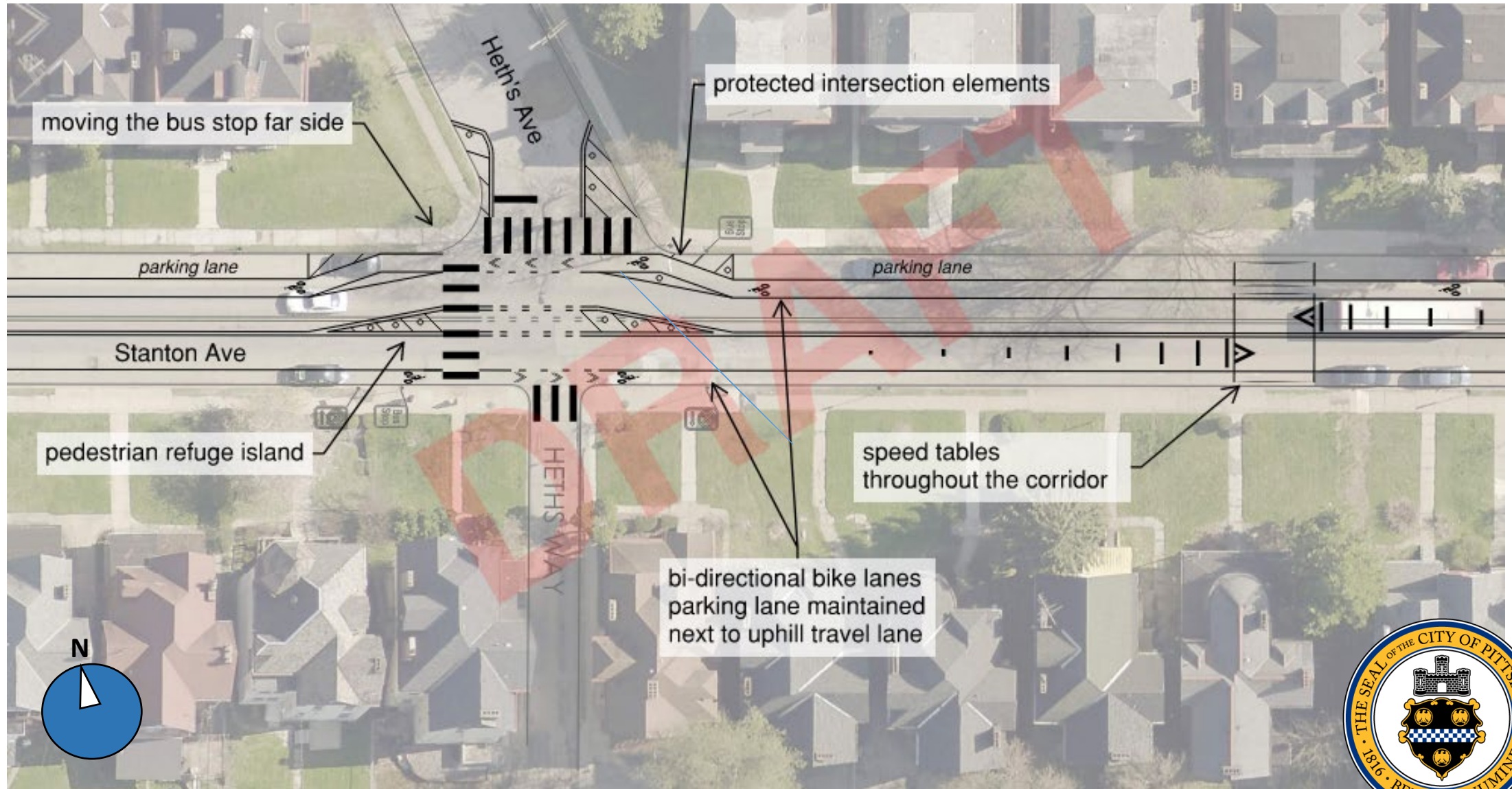


Red: Negley to Highland

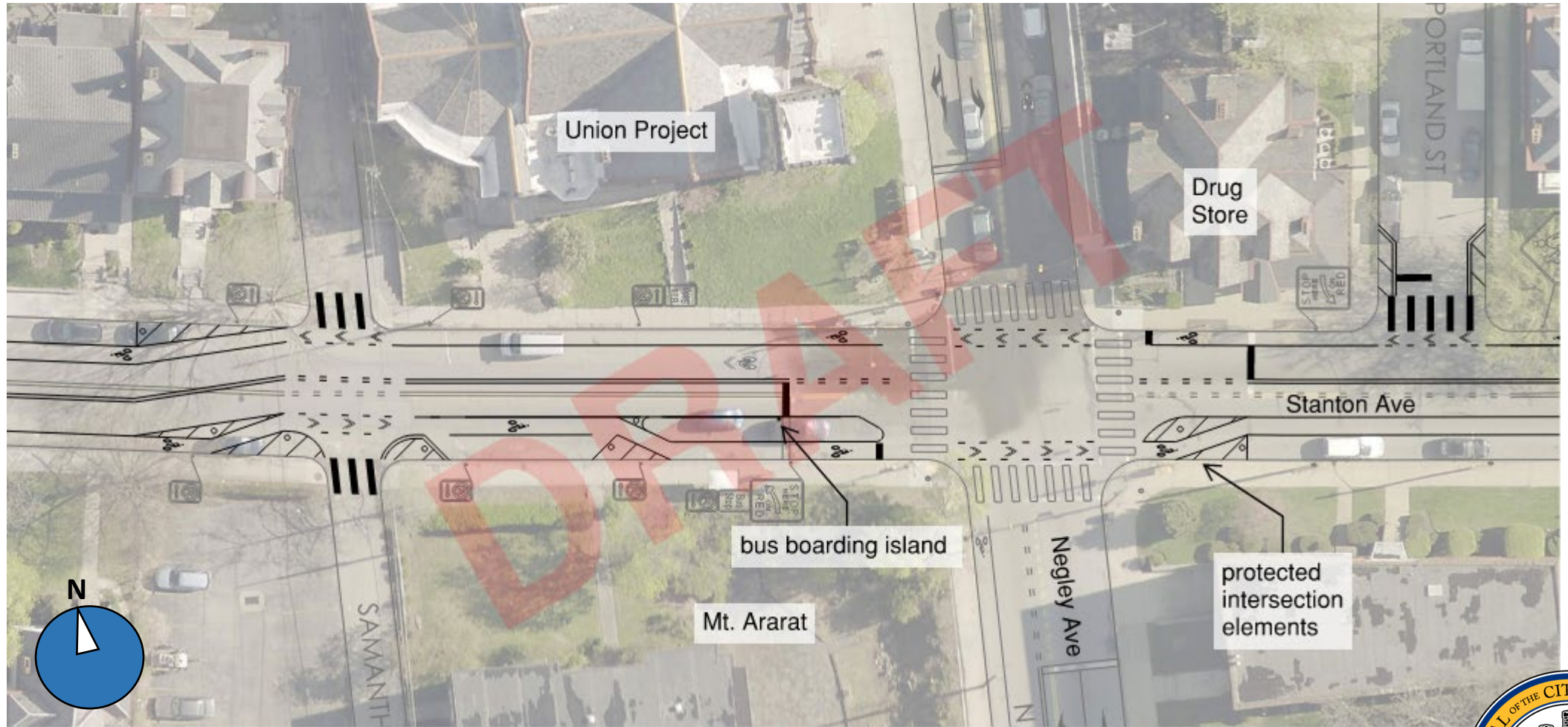


Yellow: Highland to Heberton

Safety Improvements: Heth's Ave



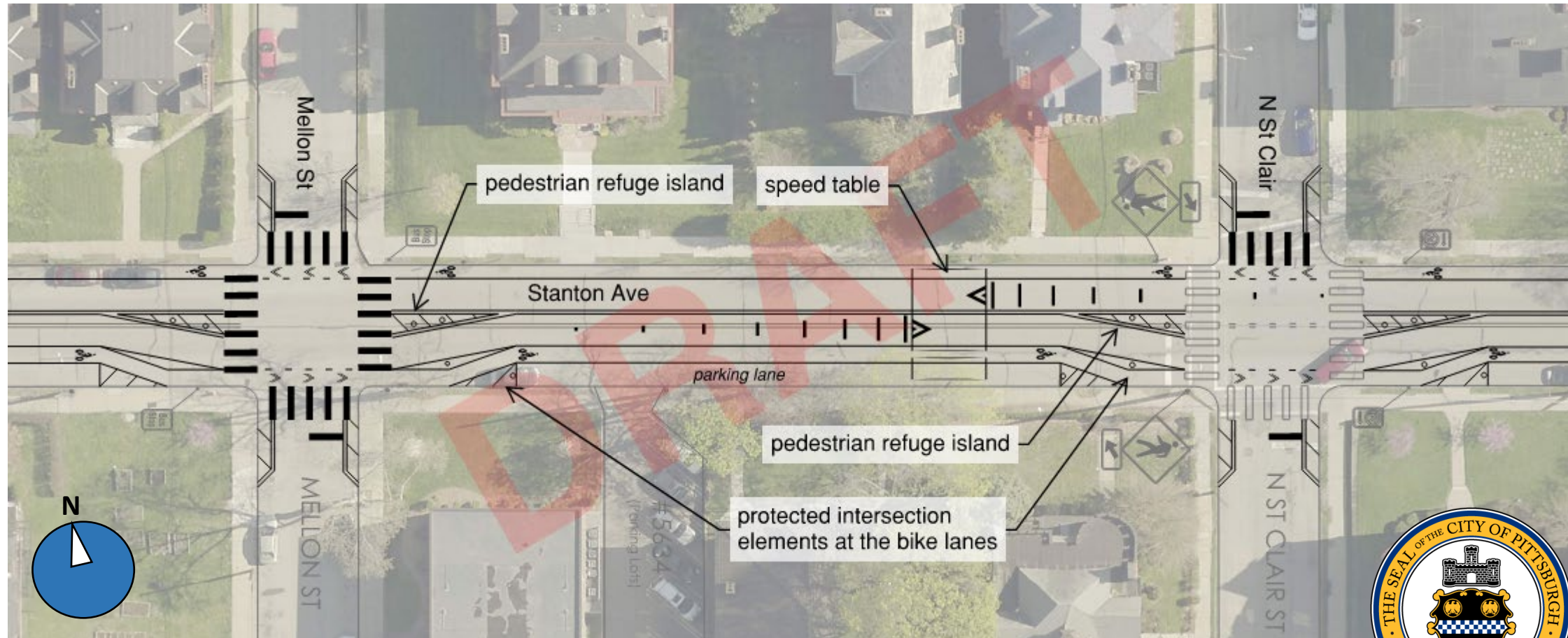
Stanton at Negley Intersection



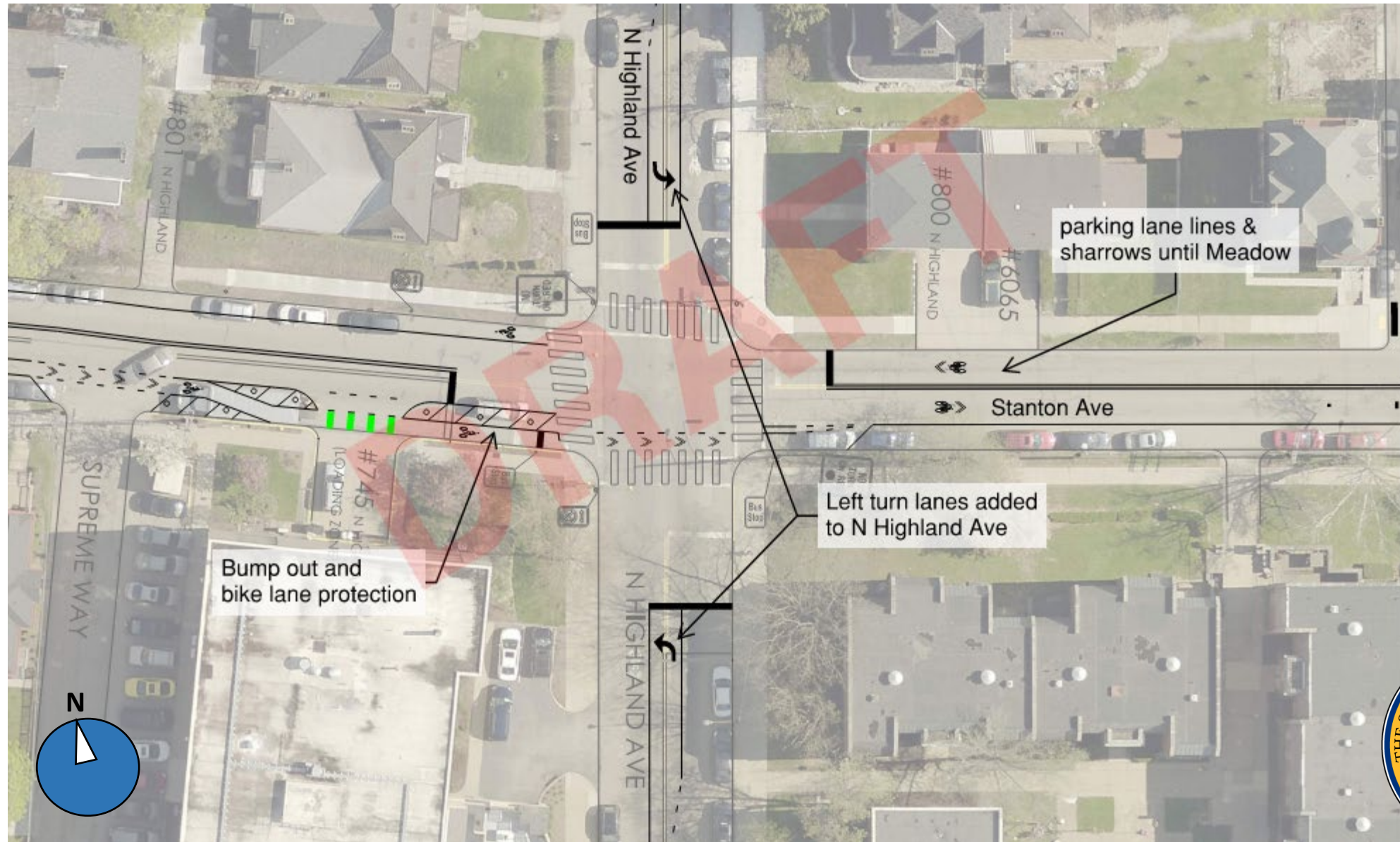
- Signalized intersection upgraded in 2022
- Coordinating PRT stop improvements
- Anticipated 2025 or 2026: new POGOH station!



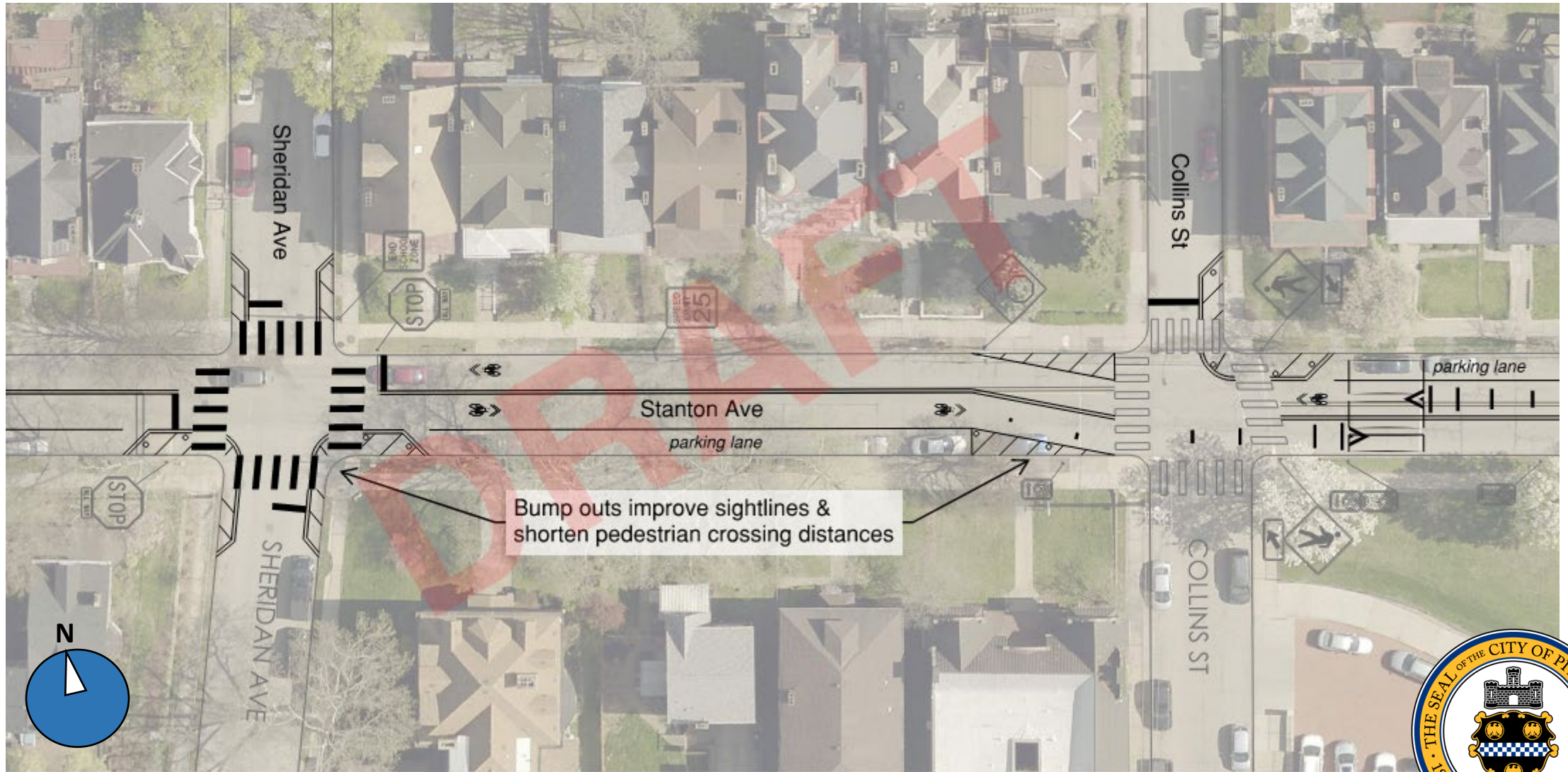
Safety Improvements at Intersections



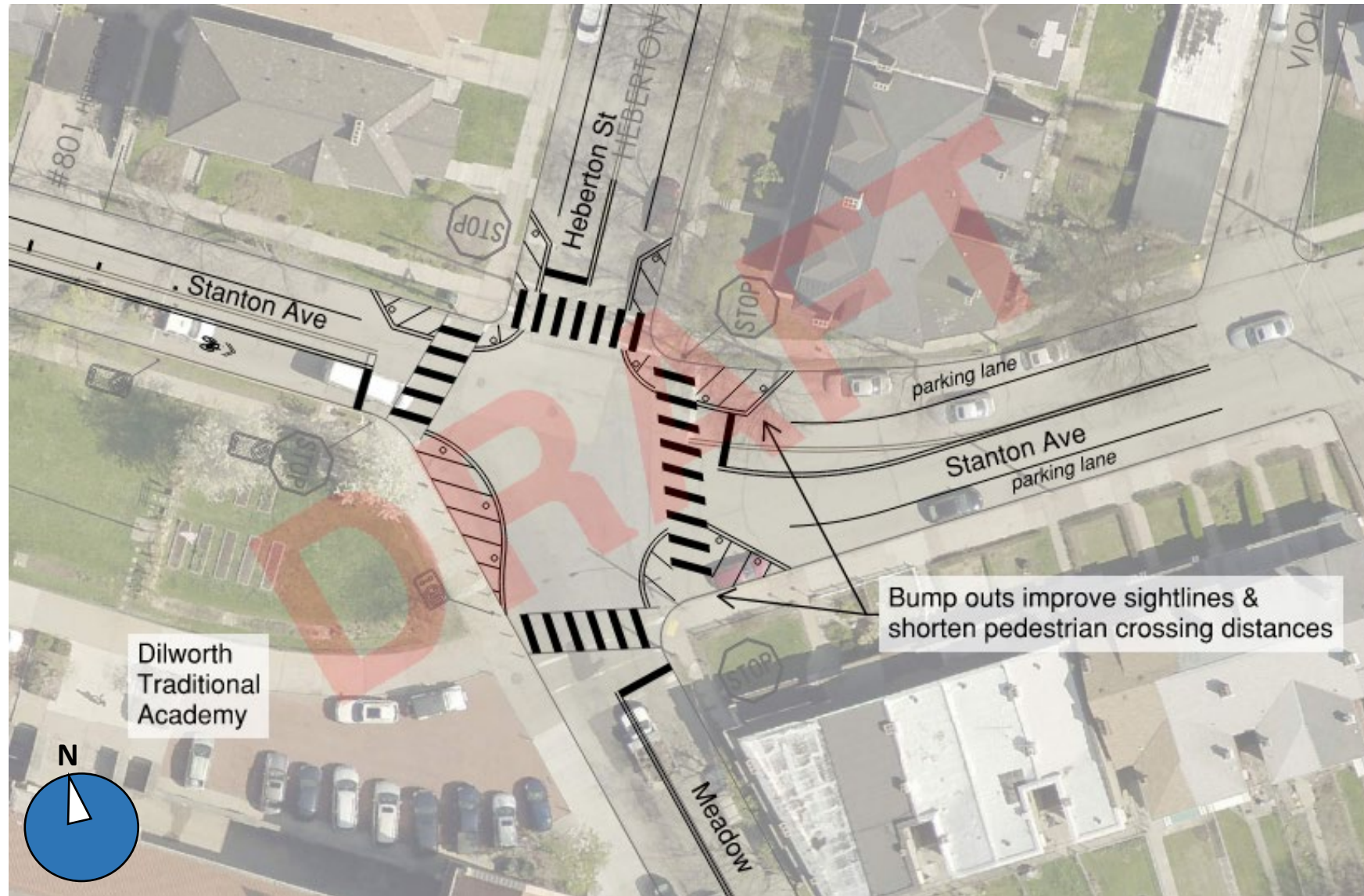
Safety Improvements: Stanton at Highland



Safety Improvements at Intersections



Safety Improvements: Heberton/Meadow




Next Steps:

90% design and construction updates will be posted to the project's Engage Page

Interested in learning more about POGOH's system expansion?



POGOH
Community Coalition
Annual Meeting



Key Note
Adaptive MoGo with **Adriel Thornton** Executive Director **MoGo**

Wednesday, March 20 3-5pm
Homewood Brushton YMCA
7140 Bennett St, Pittsburgh, PA 15208

Beverages & Light Food Provided





Next Steps: 90% design and construction updates will be posted to the project's Engage Page

Engage Page: "Stanton Ave Phase 2"

<https://engage.pittsburghpa.gov/complete-streets/stanton-ave-complete-st-phase-2>

Questions? neighbor@pittsburghpa.gov

Thank you!