



# LINCOLN-LEMINGTON-BELMAR

## *Community Visioning Study*

### Workshop #3

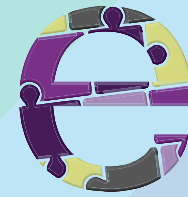


# LINCOLN-LEMINGTON-BELMAR

## *Community Visioning Study*

Welcome!

Introductions



**e.holdings**  
Connecting People + Place

# Today's Agenda



- Draft Vision Statement



- Key Themes



- Visioning Exercise



- Next Steps



## Draft Vision Statement



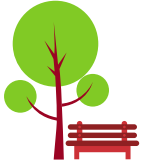
***"Lincoln-Lemington-Belmar is a safe and vibrant neighborhood, featuring a mix of locally-grown businesses, variety of housing types and active community space along a walkable Lincoln Avenue."***



## Key Visioning Themes



Unify the neighborhood into one community



Improve parks, recreation and connectivity



Create gateways and beautification of corridors



Engage the community through events/activities



Encourage more businesses/amenities



Eliminate blighted housing



SAFETY

Improve public safety



## Key Visioning Themes



- **Where do we start?**
  - Create a sense of place through improved gateways
  - Improving community safety through better sidewalks, bus stops, crosswalks
  - Improving parks and recreation through accessible greenspace and community space



# Visioning Exercise



- **Tonight's Exercise:**

- Work with our Design Team to sketch possible improvements at key areas along Lincoln Avenue

- **Breakout Groups:**

- Two groups – 30 minutes each
- Designers will switch rooms – you stay



## Next Steps



### Follow the project on the engagePGH site!

<https://engage.pittsburghpa.gov/lincoln-lemington-belmar-visioning-study>

- Review documents (existing conditions report, meeting summaries, draft visioning study)
- Provide input (online mapping survey is still active)
- Upcoming events (tentative public meeting in April)



### Contact:

Amy Wiles

Project Manager

[amy.wiles@eholdingsinc.com](mailto:amy.wiles@eholdingsinc.com)

Christopher Corbett

City Planning

[christopher.corbett@pittsburghpa.gov](mailto:christopher.corbett@pittsburghpa.gov)