



# City of Pittsburgh

## **North Avenue Traffic Signal, Streetscape, and Traffic Calming Project**

September 18, 2020

## Study Area Profile

North Avenue from Arch Street to Sandusky Street

- Length – 0.22 miles
- Width curb to curb – 45-55 feet
- Sidewalk – both sides, width ranges – 6-10 feet
- Parking – north side of North Avenue

**North Ave @ Sandusky St**

**North Ave @ Federal St**

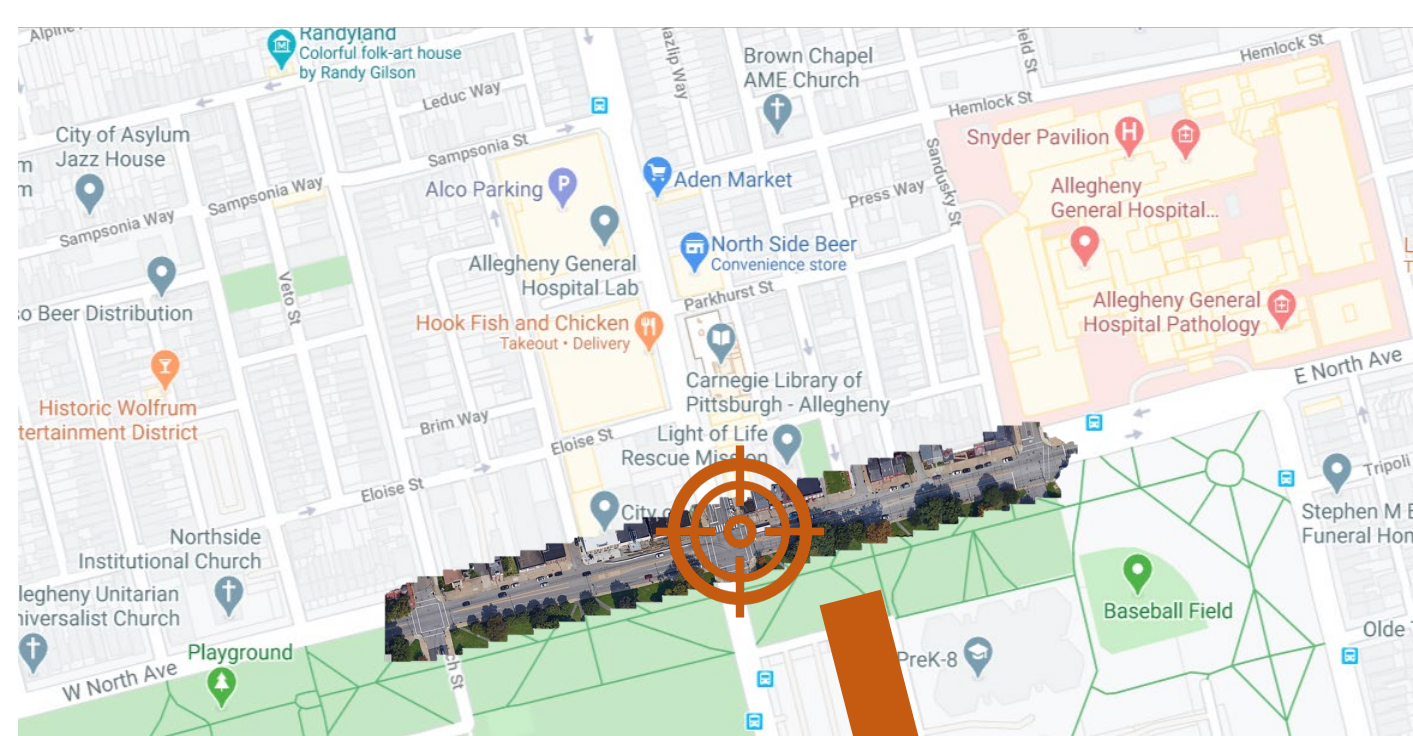
**North Ave @ Arch St**



Bus Stop Location

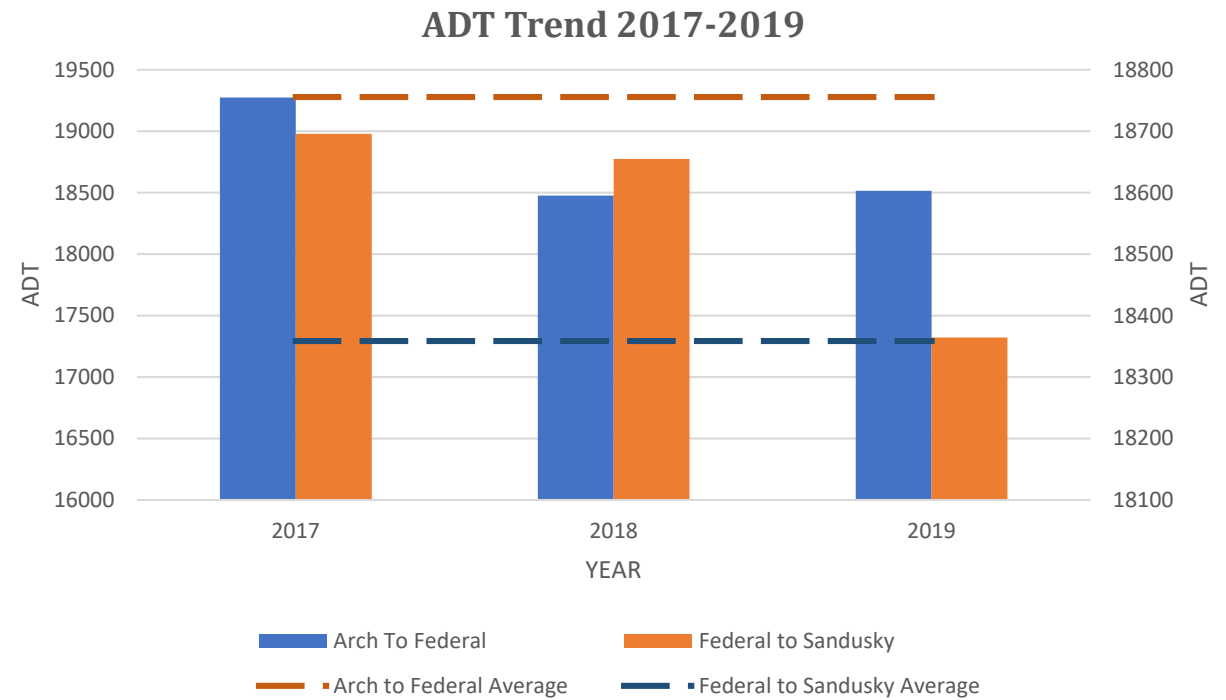


Leg without ADA-compliant Ramp



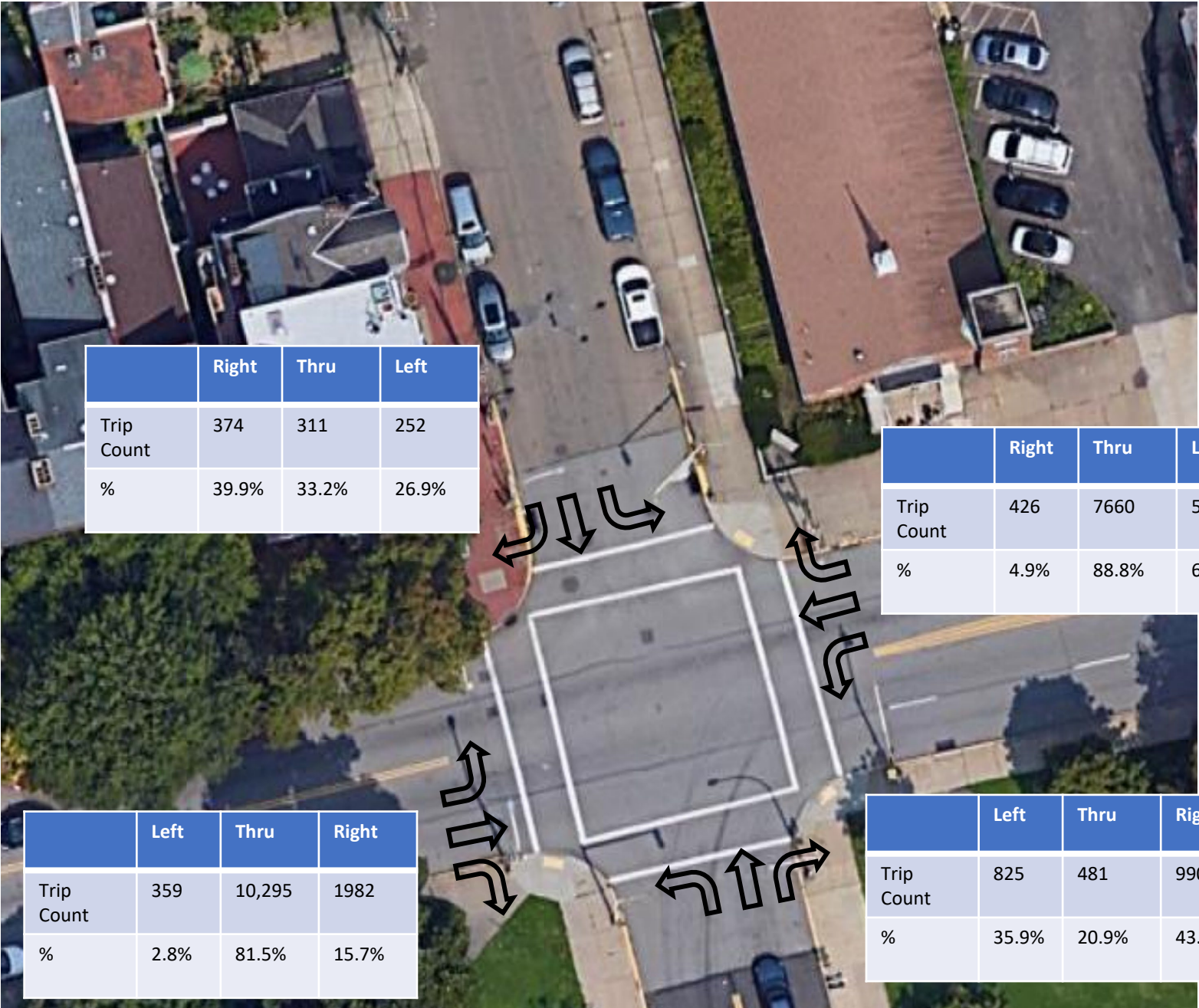
## Average Daily Traffic

Arch Street to Federal Street – 18,756 vehicles  
Federal Street to Sandusky Street – 18,359 vehicles





North Avenue @ Arch Street Intersection Trip Turn Count (24 hours) (Monday-Sunday)



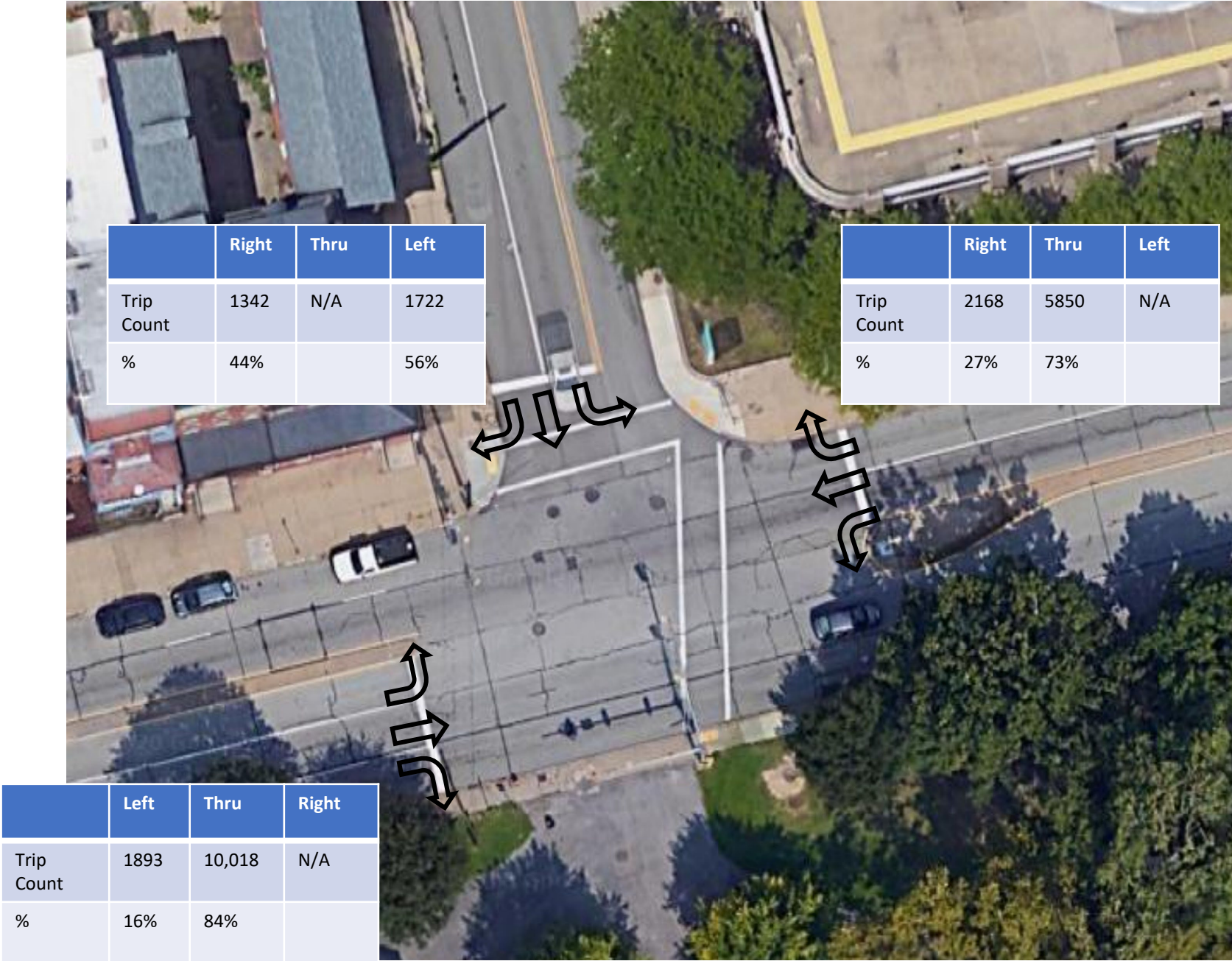


North Avenue @ Federal Street Intersection Trip Turn Count (24 hours) (Monday-Sunday)



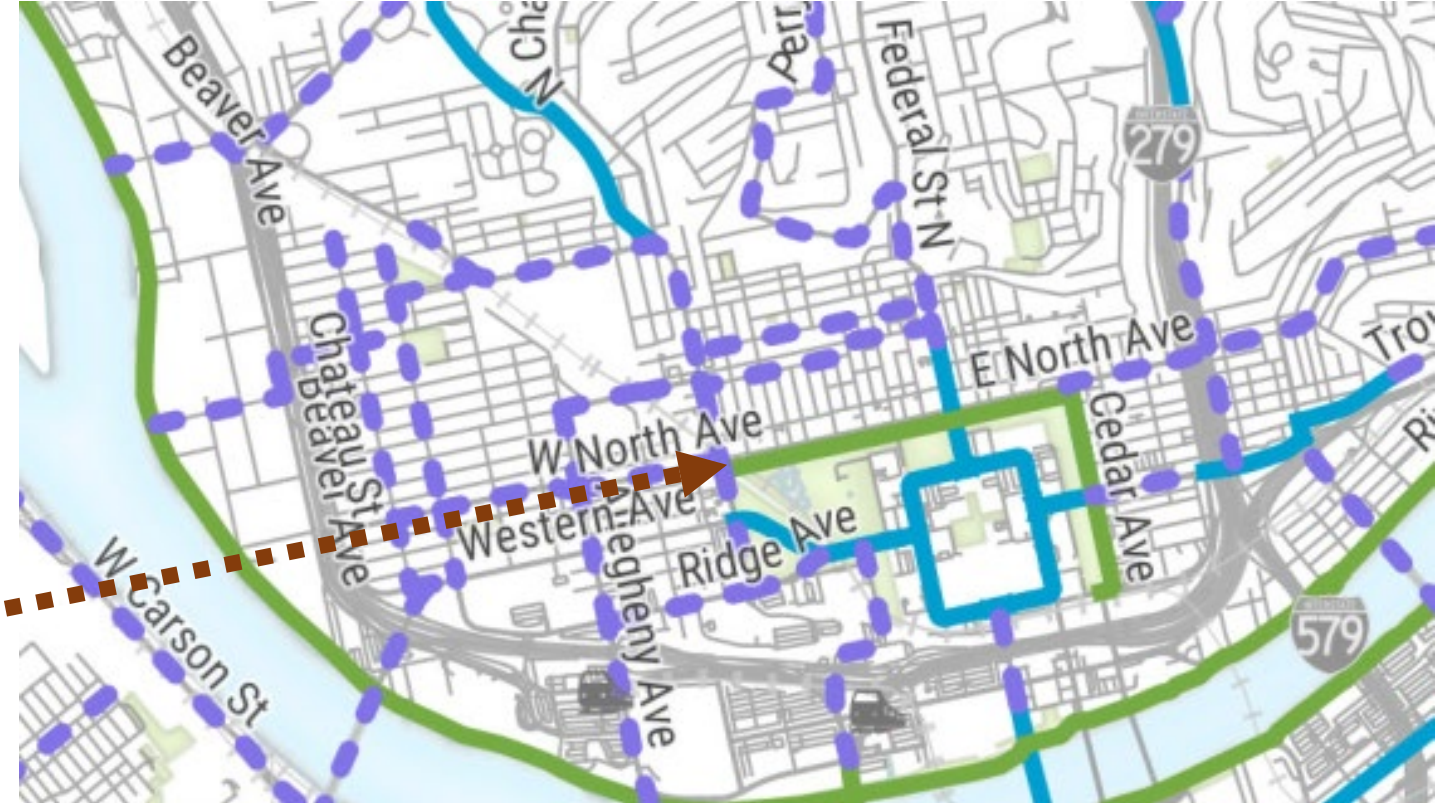
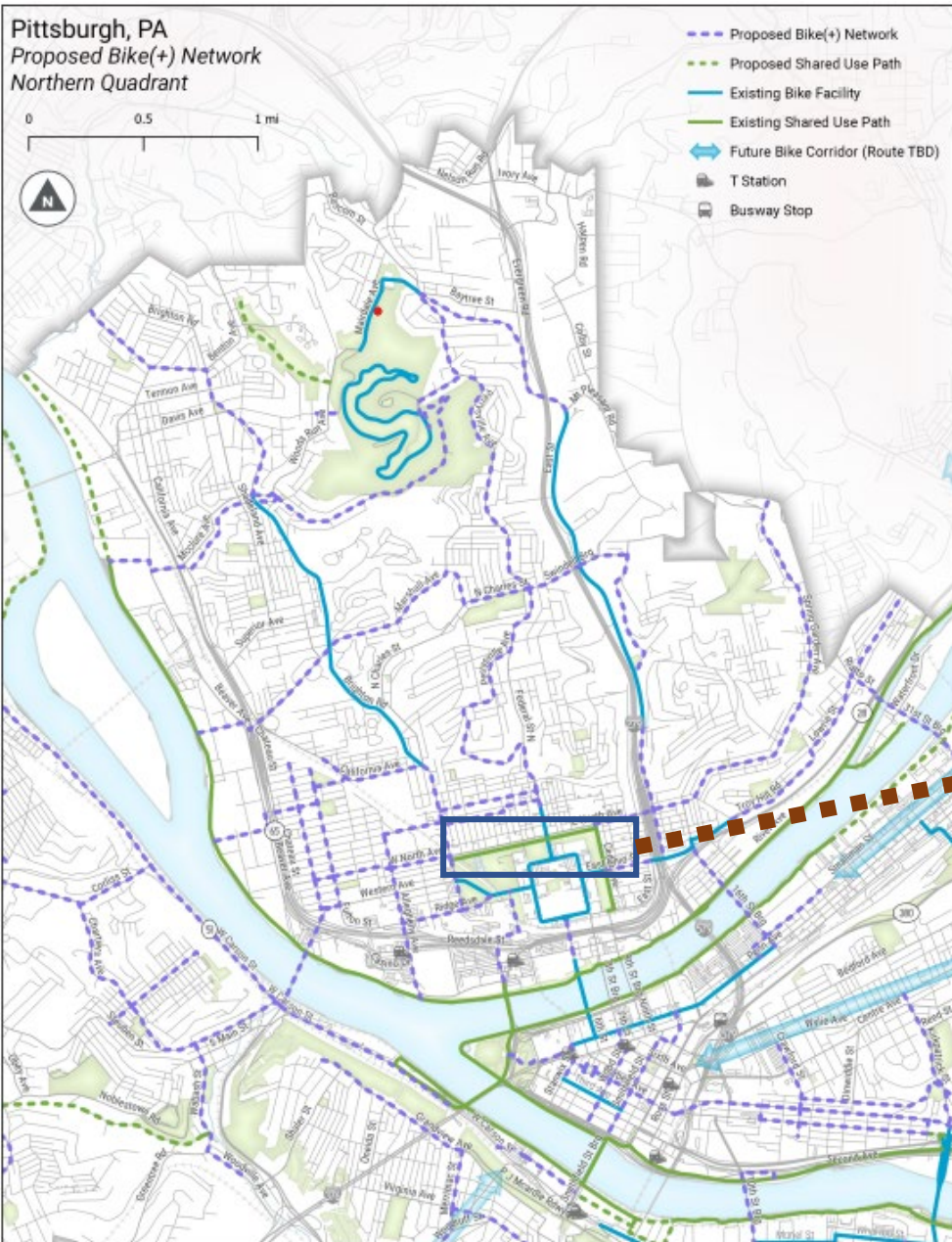


North Avenue @ Sandusky Street Intersection Trip Turn Count (24 hours) (Monday-Sunday)





# City of Pittsburgh's Bike(+) Plan Completed June 2020





# STRAVA Bicycle Heat Map





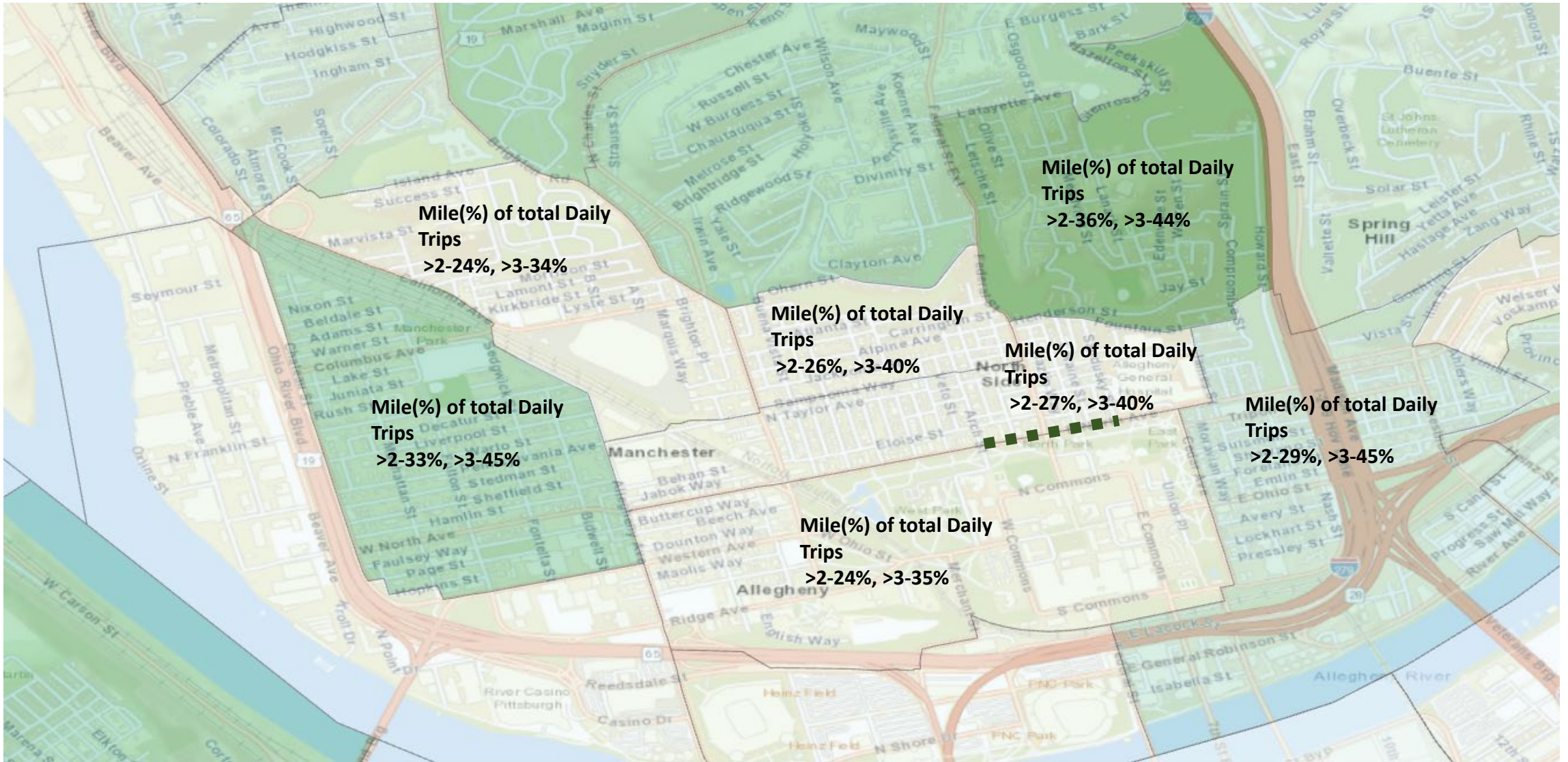
# STRAVA Walk Map





# Short Motorized Vehicle Trips (less than 2 & 3 miles)

City Average >2 mile - 32% and >3 mile - 45%





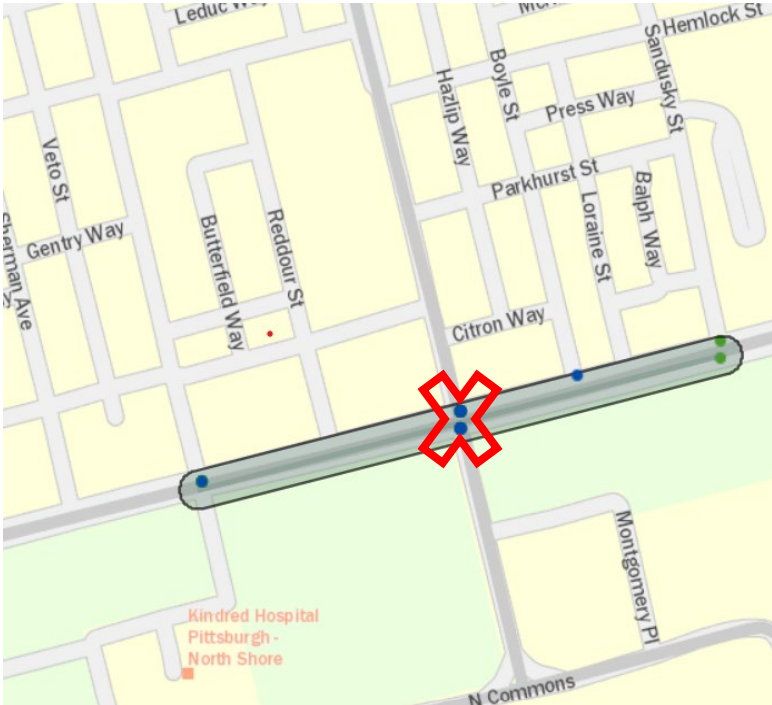
# Crash Statistics - North Avenue between Arch Street and Sandusky Street

## 2015-2019

Crash By Year	Number of Crashes
2015	4
2016	5
2017	5
2018	6
2019	7
TOTAL	27

Crash By Severity	Number of Crashes
Possible Injury	4
Injury/ Unknown Severity	5
Suspected Minor Injury	6
Not injured	12
TOTAL	27

Weather Condition	Number of Crashes
Clear	22
Rain	3
Snow	2
TOTAL	27



Road Condition	Number of Crashes
Dry	19
Wet	8
TOTAL	27

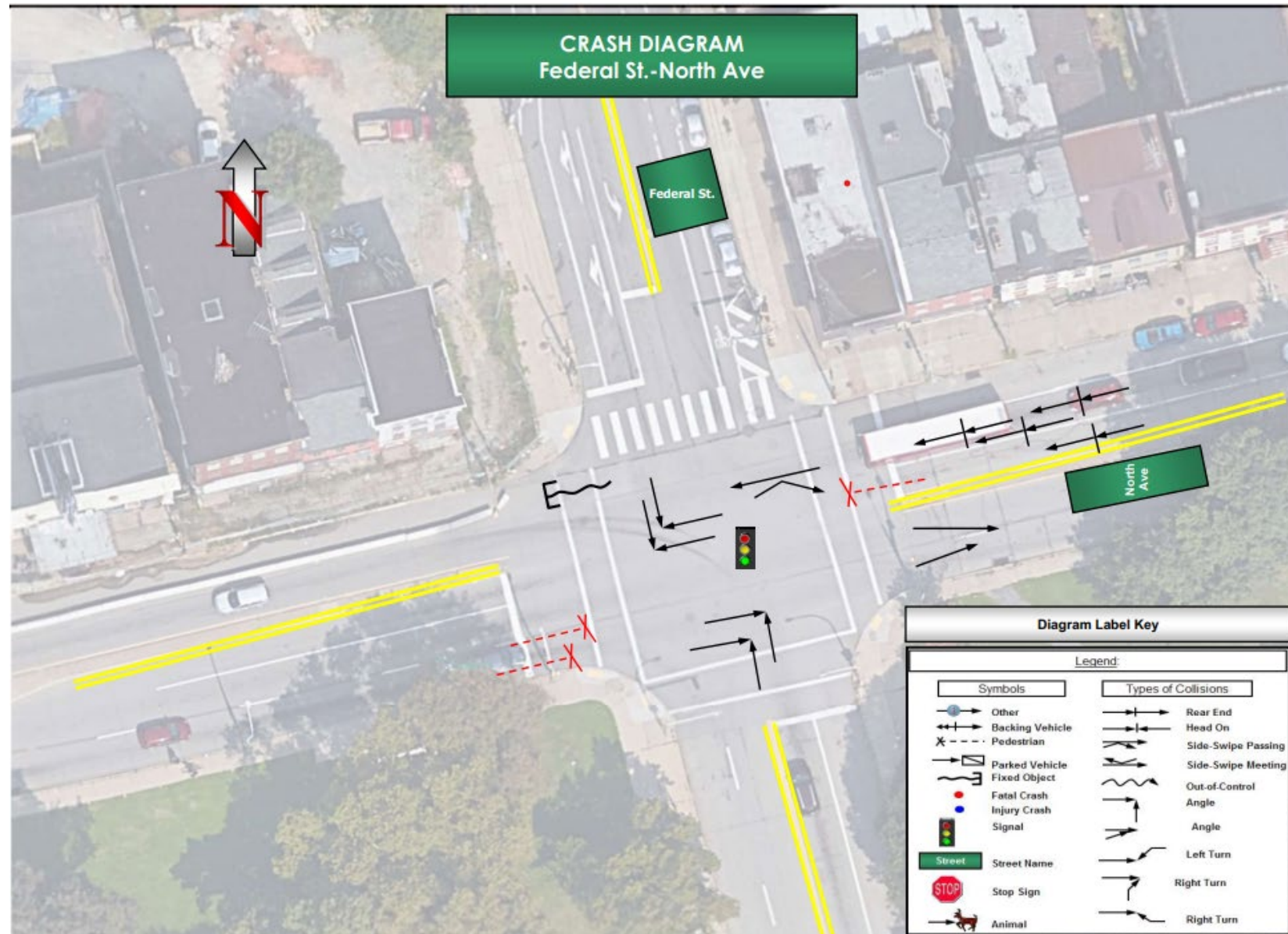
Crash Type and Severity	Number of Crashes
Angle	10
Injury/ Unknown Severity	2
Not injured	6
Suspected Minor Injury	2
Hit fixed object	2
Injury/ Unknown Severity	1
Not injured	1
Hit pedestrian	6
Injury/ Unknown Severity	2
Possible Injury	2
Suspected Minor Injury	2
Non collision	1
Not injured	1
Rear-end	6
Not injured	4
Possible Injury	2
Sideswipe (Opposite dir.)	2
Suspected Minor Injury	2
TOTAL	27

Light Condition	Number of Crashes
Dark - street lights	10
Daylight	17
TOTAL	27

# Crash Diagram North Avenue and Federal Street Intersection 2015-2019

14 crashes at this intersection  
(52% of total crashes in the study area)

Year	Number of Crashes
2015	3 (2 Ped)
2016	3 ( 1 Ped)
2017	2
2018	2
2019	4





# Parking Facilities and Level of Utilization

North side of North Avenue and church parking

## Utilization levels

- Weekdays
  - On street - high
  - Off street - Low
- Weekend
  - On street - moderate
  - Off street - high





# Allegheny City Central Master Plan (2014)

## Priority results from Steering Committee

### Crosswalk Improvements @ North Avenue and Federal Street

- Artistic Crosswalk
- ADA Ramp
- Lead Pedestrian Interval (LPI) Signal
- Curb Extension
- Traffic Signal Improvement

### Sidewalk Improvement

- Demolition of existing sidewalk
- New concrete curbs and sidewalks (14 foot preferred)

### Lighting

- Remove existing light and install decorative lights (similar Federal Street)

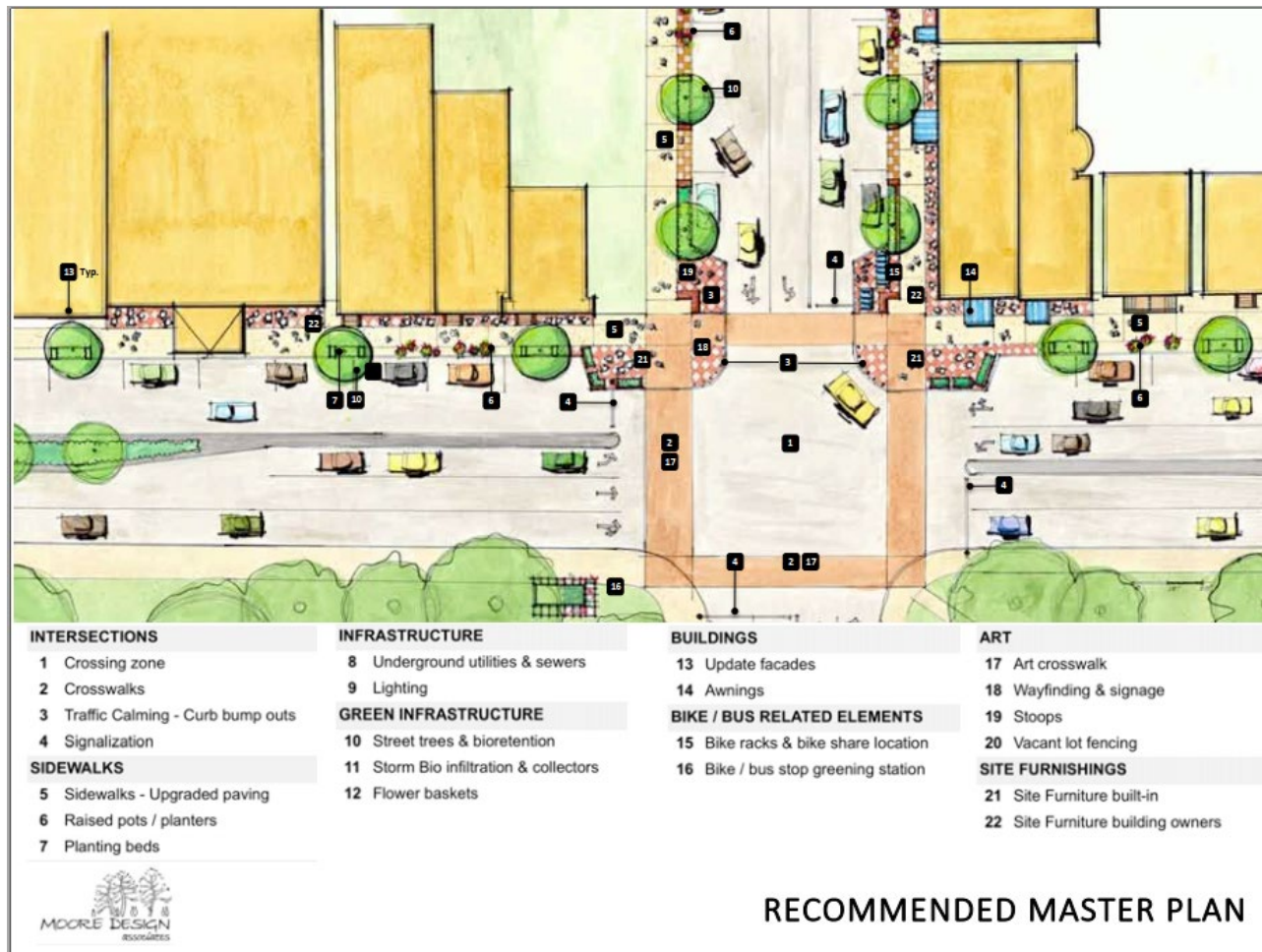
### Street trees and bio retention

- Trees with infiltration pits and grates

### Awning

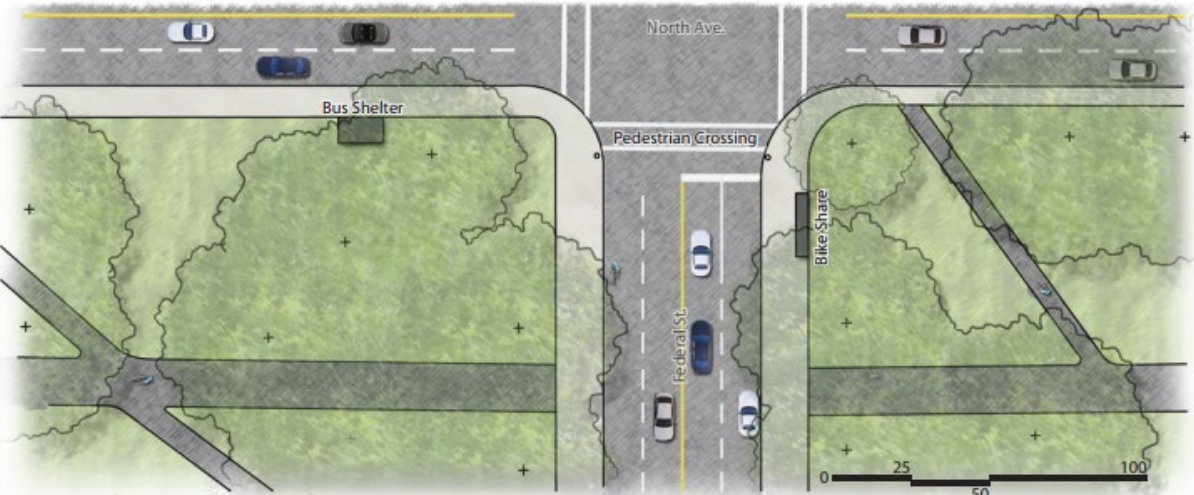
- Per individual owners through possible grant assistance

### Bike racks and sharing station

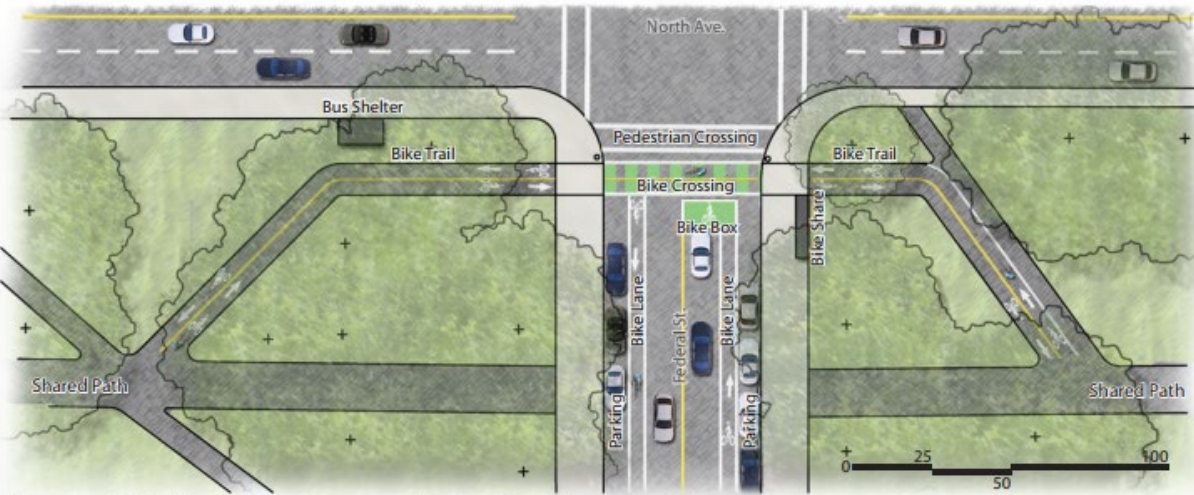




# Lower Northside Bicycle Connection Study (2016)

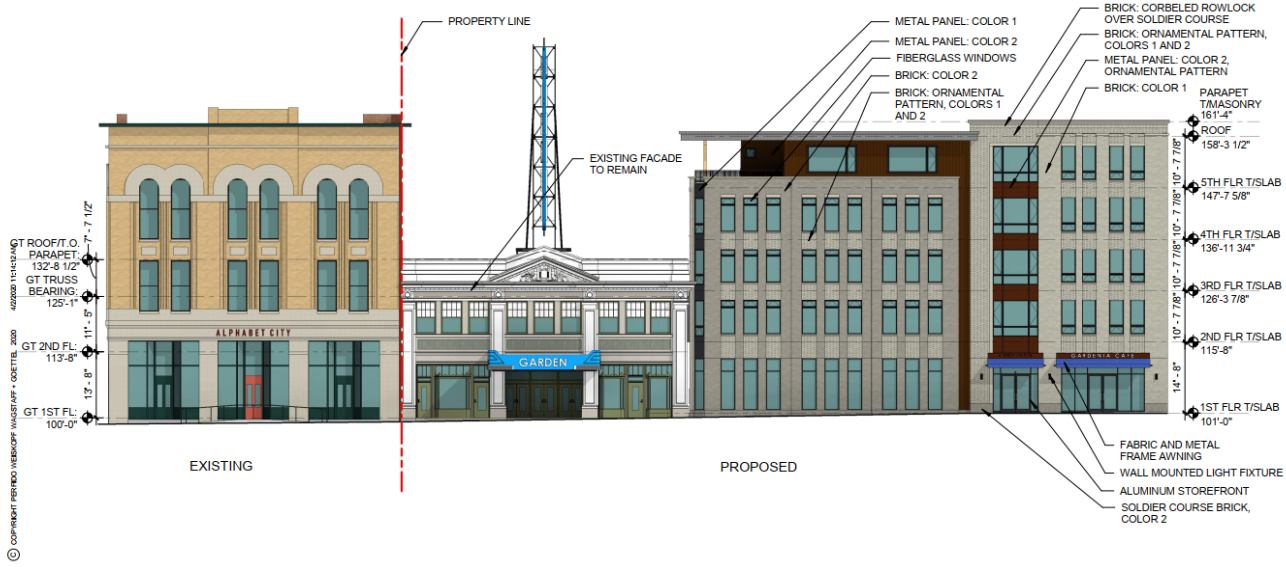


Existing Crossover (Federal Street)



Proposed Bike/Pedestrian Crossover (Federal Street)

# Garden Theatre Block Contextual Design (2020)



W. NORTH AVE. / SOUTH ELEVATION

\*City Planning Commission approved the plan in July 2020

# North Promenade Project (under construction)

## Project Update

- Sidewalk improvements completed along portions of North Avenue and Federal Street
- Hartzell Monument foundation installed
- Light pole foundations installed
- Median work will begin in the coming weeks
- Promenade and connector paths paving work will also start in the coming weeks

## Project Elements

- Trees
- Turf
- Promenade
- Connecting paths
- Mid-block crosswalks
- Sidewalks
- Piping
- Lighting
- Seating
- Monuments

