



# REAPPORTIONMENT ADVISORY COMMITTEE:

Reapportionment Map Draft for  
the City of Pittsburgh

---

City Council Chambers  
March 24, 2022

# WHAT IS THE RAC?

- Reapportionment Advisory Committee: A nine member body appointed by City Council tasked with drafting a Council District reapportionment map draft based on population data from the 2020 Decennial Census.

# WHO IS THE RAC?

## APPOINTEES

- Councilman Wilson, District 1:  
**SCHUYLER SHEAFFER**
- Councilwoman Kail-Smith, District 2:  
**JONATHAN ALEXANDER**
- Councilman Kraus, District 3:  
**ROBERT CHARLAND**
- Councilman Coghill, District 4:  
**BLAKE PLAVCHAK**
- Councilman O'Connor, District 5:  
**MATT SINGER**
- Councilman Lavelle, District 6:  
**DANIEL WOOD, (Chair)**
- Councilwoman Gross, District 7:  
**JAMES MURRAY**
- Councilwoman Strassburger, District 8:  
**EMILIE YONAN (Vice-Chair)**
- Councilman Burgess, District 9:  
**SHAWN CARTER**

## SUPPORT STAFF

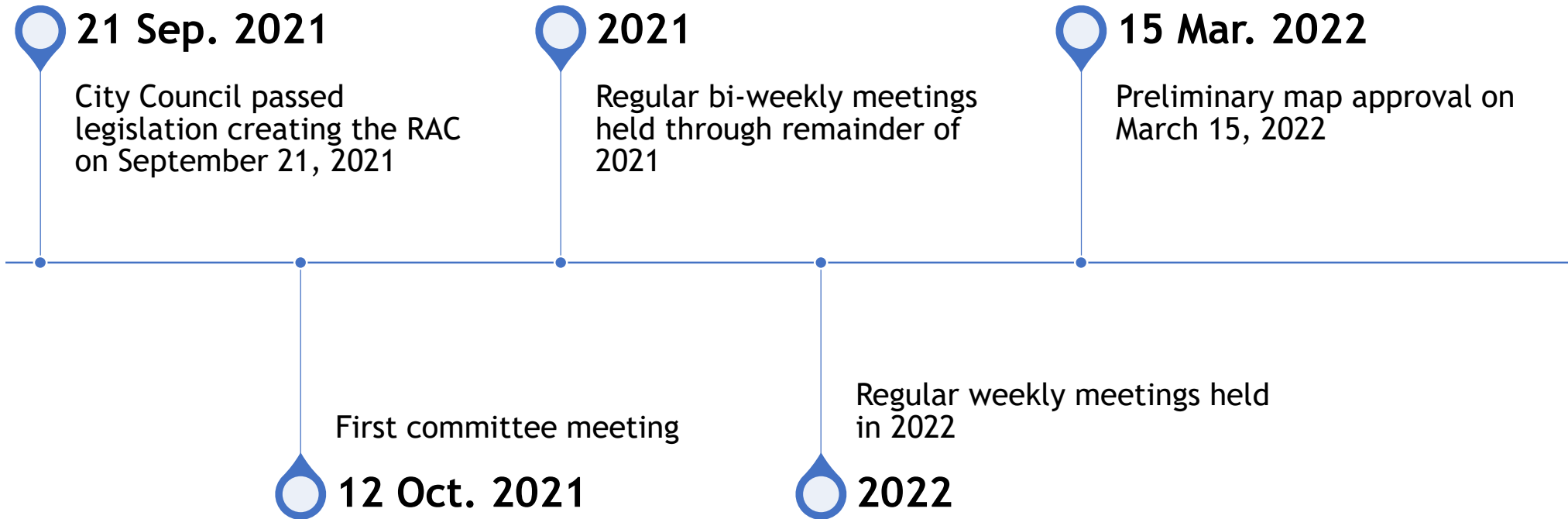
- Brenda Pree, City Clerk's Office
- Kim Clark-Baskin, City Clerk's Office
- Louise Criss, City Clerk's Office
- Jesse Exilus, City Law Department
- Giovanni Svevo, Department of I&P

# AUGUST 11, 2022

- Pennsylvania Constitution requires apportionment of council districts every 10 years with the release of the United States Decennial Census:

"Within the year following that in which the Federal decennial census is officially reported as required by Federal Law, and at such other times as the governing body of any municipality shall deem necessary, each municipality having a governing body not entirely elected at large shall be reapportioned..."

# RAC TIMELINE



# CRITERIA AND LEGAL REQUIREMENTS IN REAPPORTIONING COUNCIL DISTRICTS

- Pennsylvania Legislature establishes requirements municipalities must adhere to in reapportionment:
  - Districts shall be composed of compact territory
  - Districts shall be composed of contiguous territory
  - Districts must be as nearly equal in population as practicable
  - Districts must be in compliance of the Voting Rights Act

# DISTRICT COMPACTNESS

- A district that is as solid and uniform in shape as possible
  - Of all criteria, this is the one with the greatest deal of legal latitude
- 

# DISTRICT CONTIGUITY

- Pennsylvania Supreme Court definition:
  - A district in which one person can go from one point in a district to any other point without leaving the district

OR

- A district in which no part of the district is separate from any other part

# DISTRICT POPULATION EQUALITY: "One Person, One Vote"

- Article IX, Section 11 of the Pennsylvania Constitution: The voting power of every individual should be equal to that of any other individual
- Commonwealth Court ruled that local reapportionment plans with a deviation of less than 10% enjoy a "safe harbor" from legal challenges



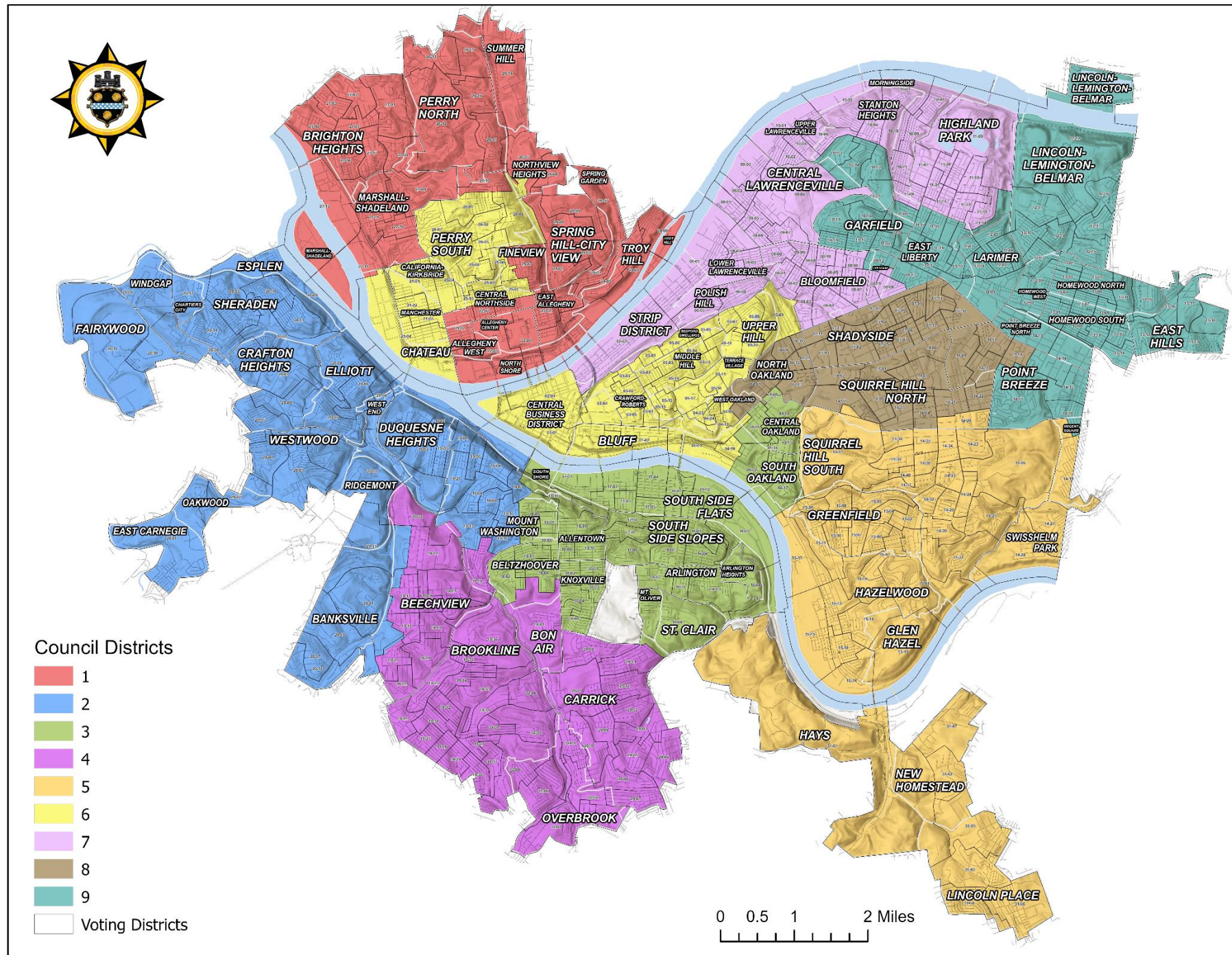
# VOTING RIGHTS ACT:

## Majority-Minority Districts

- Federal Voting Rights Act of 1965: Established to enforce provisions of the 15th Amendment, which prohibits government from denying citizens the right to vote based on a person's race
- Majority-Minority Districts (Supreme Court, Thornburg vs. Gingles)
  - Minority group is sufficiently large and geographically compact to constitute a majority
  - Minority group is politically cohesive
  - White majority votes sufficiently as a bloc to defeat the minority's preferred candidate
- Definition of Majority (Supreme Court, Bartlett vs. Strickland): A minority, voting age population that constitutes a minimum of 50% of the total voting age population of a district

# WHERE WE ARE TODAY: Current Map

- Majority-Minority Districts
  - District 6
  - District 9



# WHERE WE ARE TODAY:

## 2020 Census and Current District Numbers

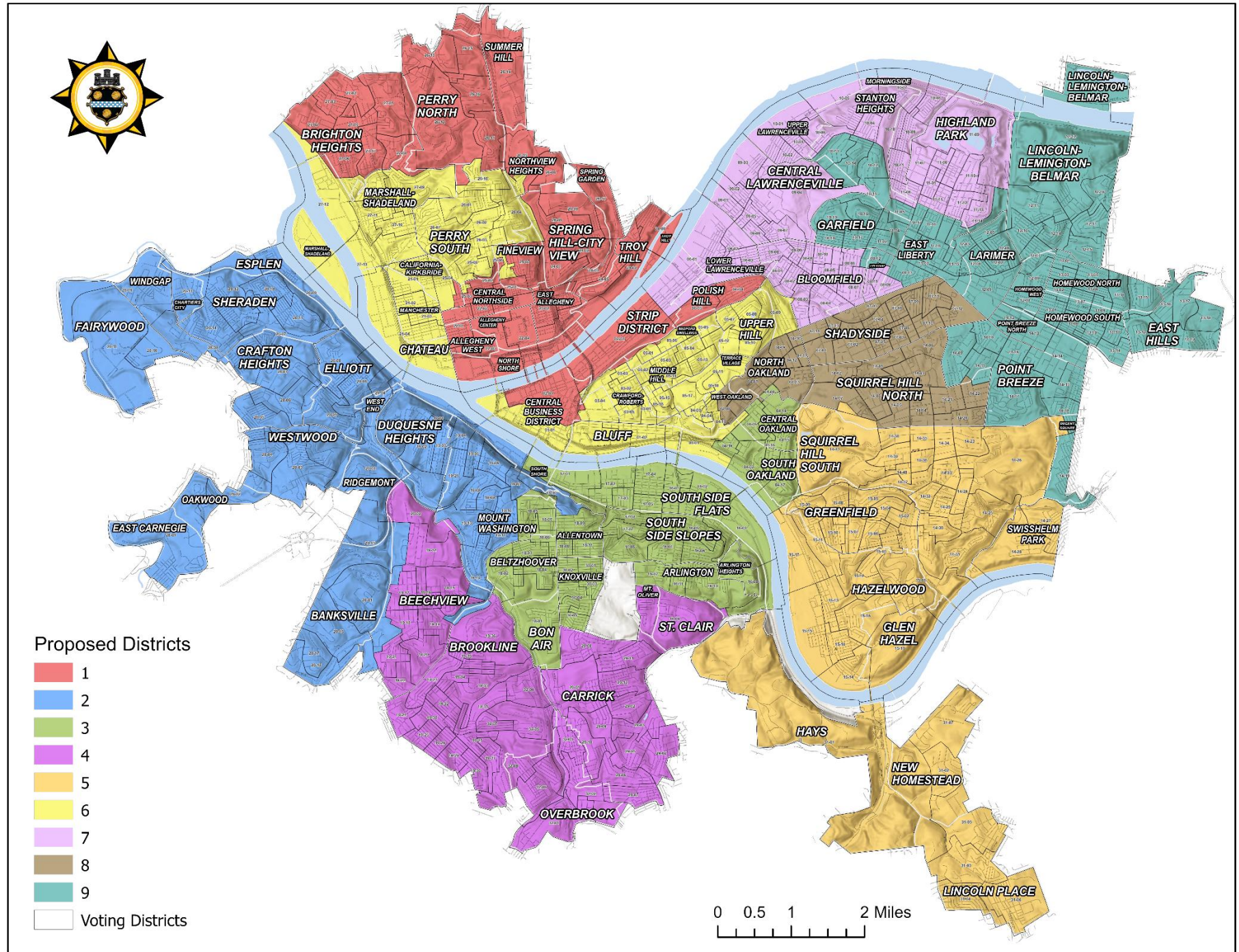
- Total Population of Pittsburgh: 302,971 (decrease of 2,733 from 2010 total of 305,704)
- "Ideal" district population (population mean): 33,663

DISTRICT	2020 Census	Deviation from Ideal	Difference from Ideal	% African-American VAP
1	30,355	-9.83%	-3,308	29.13%
2	32,774	-2.64%	-889	19.17%
3	34,839	3.49%	1,176	18.8%
4	35,574	5.68%	1,911	10.61%
5	34,296	1.88%	633	9.76%
6	32,727	-2.78%	-936	45.43%
7	35,608	5.78%	1,945	9.3%
8	36,593	8.7%	2,930	5.89%
9	30,205	-10.27%	-3,458	62.4%



# RAC DRAFT MAP PROPOSAL

- Total deviation: 9.83%
- Maintains Majority-Minority districts
  - District 6: 50.1%
  - District 9: 55.74%



# RAC DRAFT MAP PROPOSAL

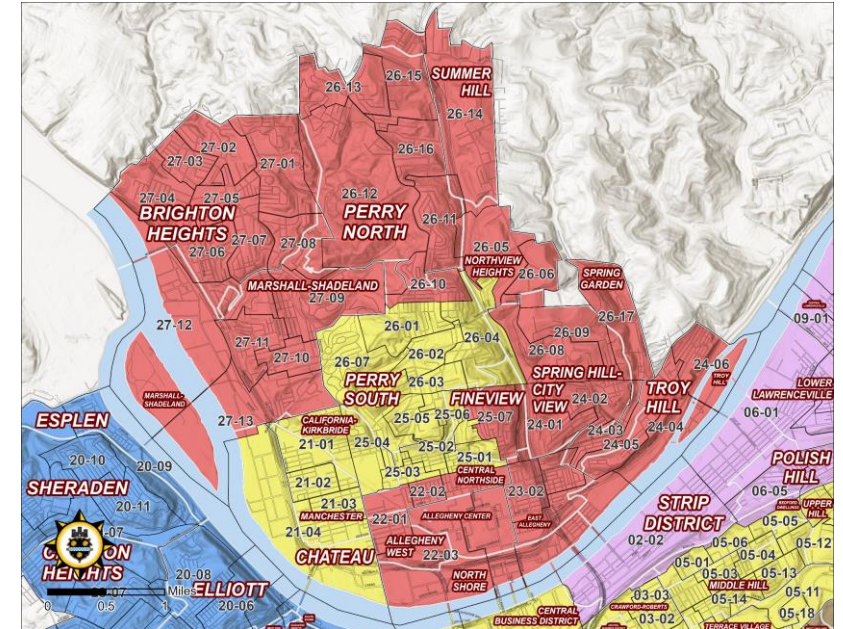
DISTRICT	Population Total	Deviation from Ideal	Difference from Ideal	% African-American VAP
1	32,717	-2.81%	-946	23.69%
2	33,651	-0.04%	-12	19.13%
3	35,197	4.56%	1,534	18.29%
4	34,683	3.03%	1,020	10.89%
5	32,963	-2.08%	-700	10.03%
6	31,887	-5.28%	-1,776	50.1%
7	32,992	-1.99%	-671	9.64%
8	34,903	3.68%	1,240	6.46%
9	33,978	0.93%	315	55.74%



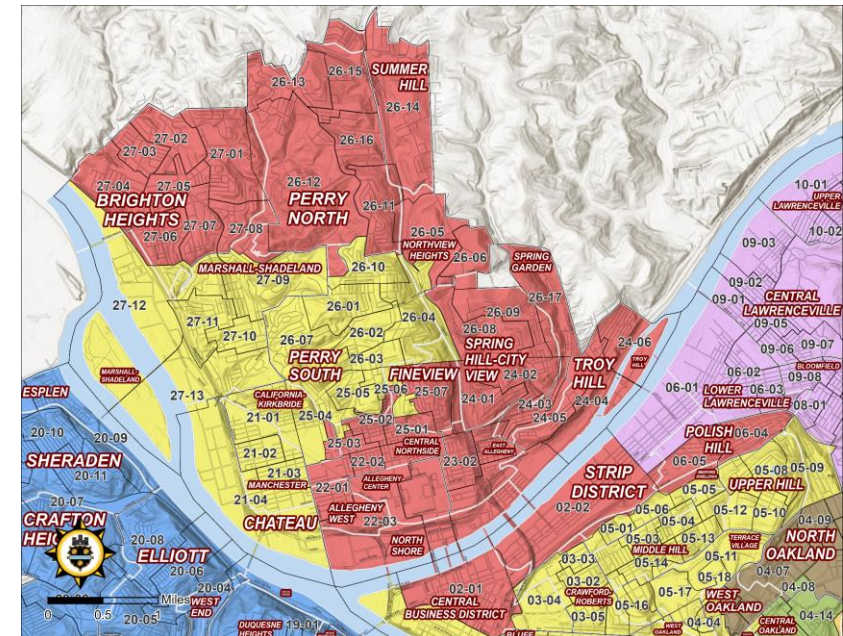
# RAC DRAFT MAP: District 1

Ward-District	Neighborhood	Current District	New District
25-1	Central Northside	6	1
25-2	Central Northside	6	1
25-3	Central Northside	6	1
2-1	Downtown	6	1
2-2	Strip District	7	1
6-4	Polish Hill	7	1
6-5	Polish Hill	7	1
27-9	Marshall-Shadeland	1	6
27-10	Marshall-Shadeland	1	6
27-11	Marshall-Shadeland	1	6
27-12	Marshall-Shadeland	1	6
27-13	Marshall-Shadeland	1	6
26-10	Perry-South	1	6

CURRENT MAP



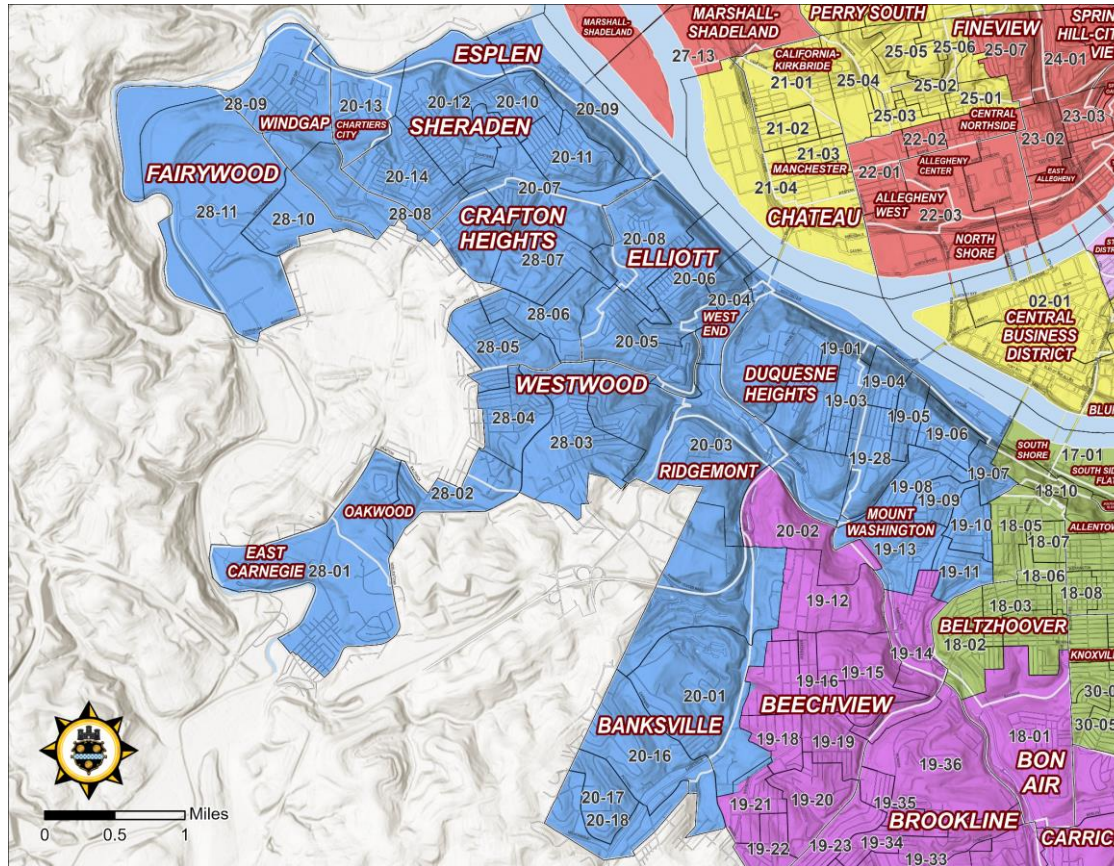
RAC PROPOSAL



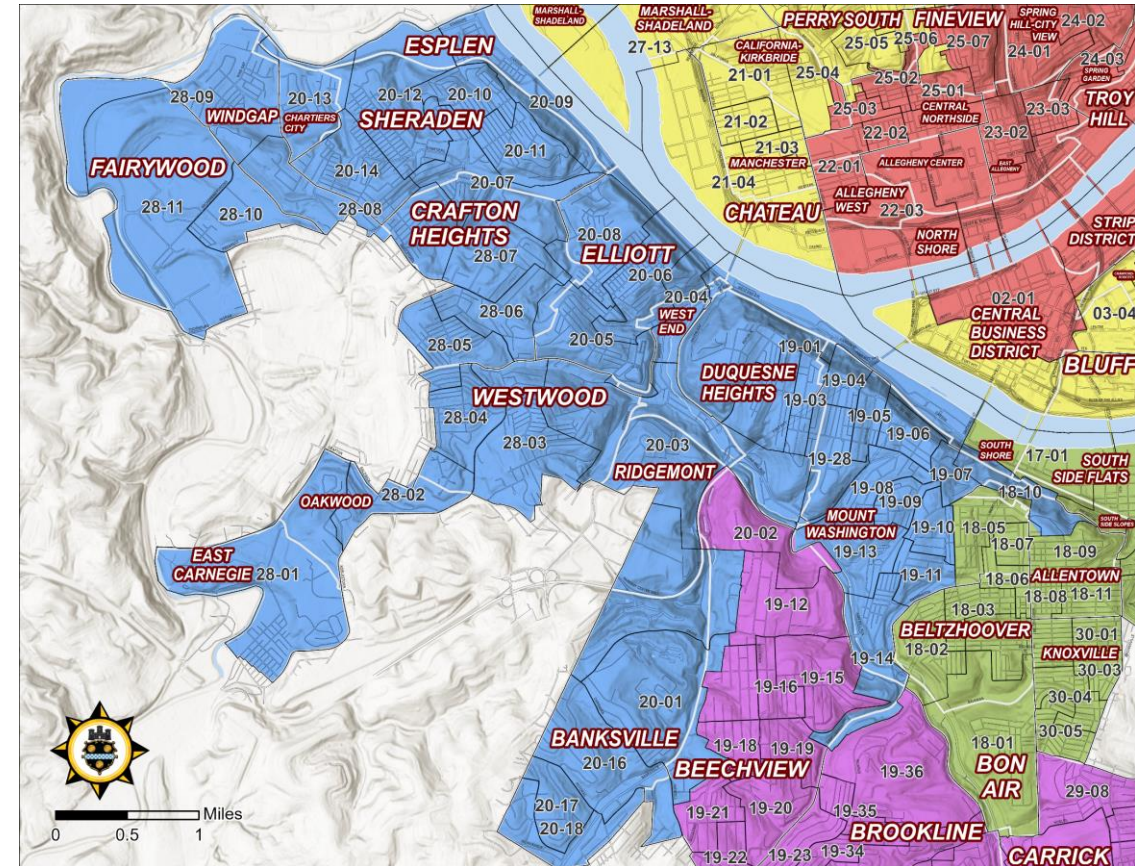


# RAC DRAFT MAP: District 2

Ward-District	Neighborhood	Current District	New District
19-14	Mount Washington	4	2
18-10	South Shore	3	2



CURRENT MAP

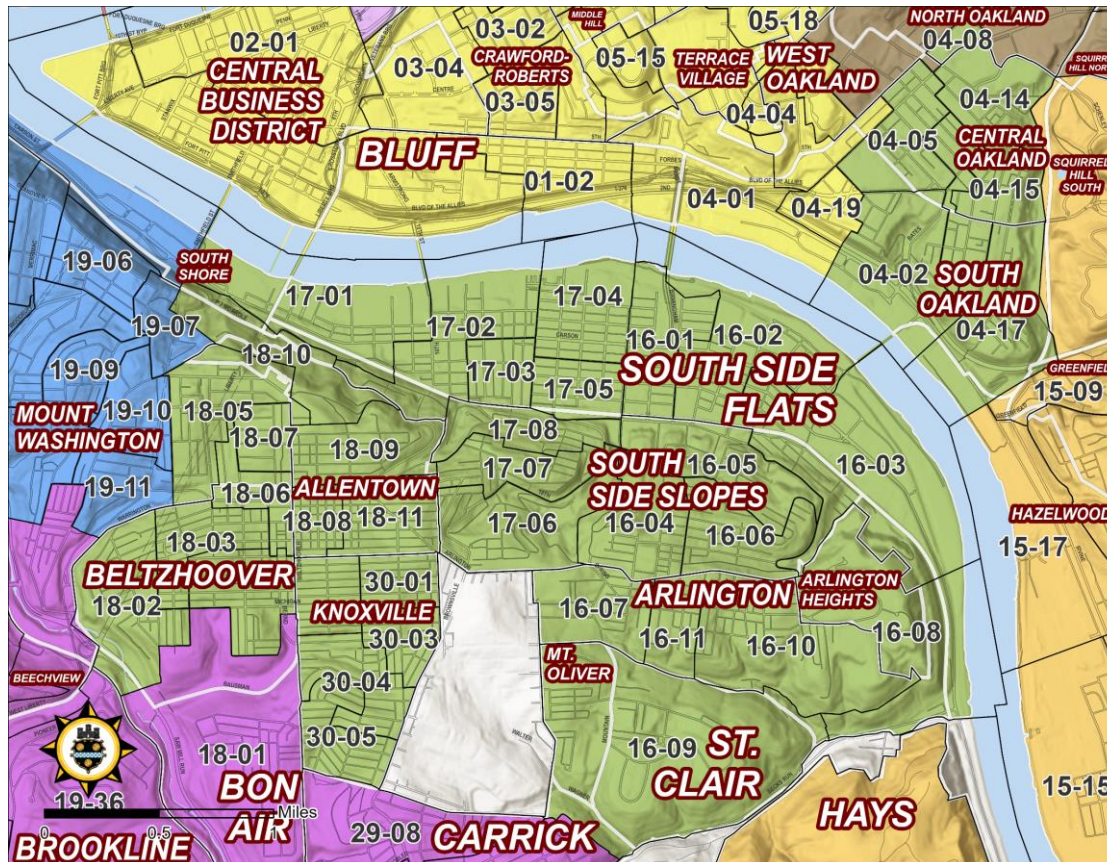


RAC PROPOSAL

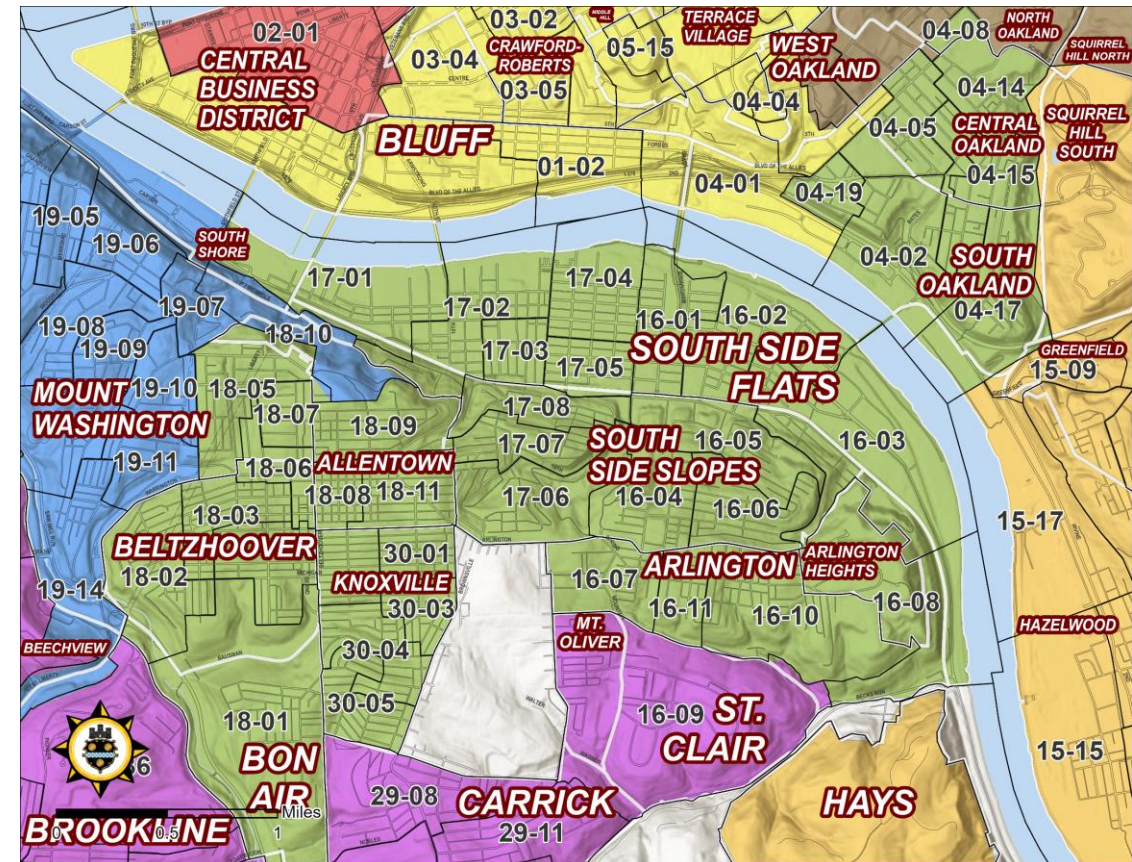


# RAC DRAFT MAP: District 3

Ward-District	Neighborhood	Current District	New District
18-1	Bon Air	4	3
4-19	Oakland	6	3
16-9	St Clair	3	4



CURRENT MAP

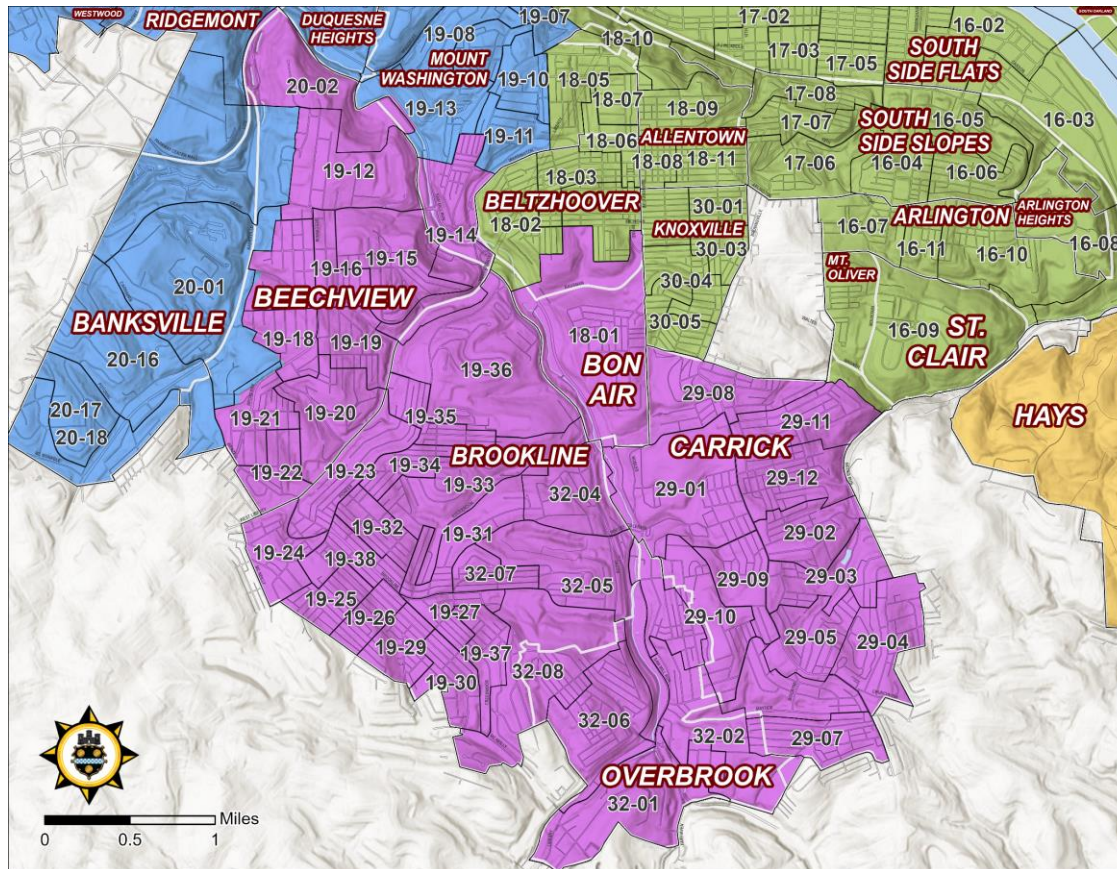


RAC PROPOSAL

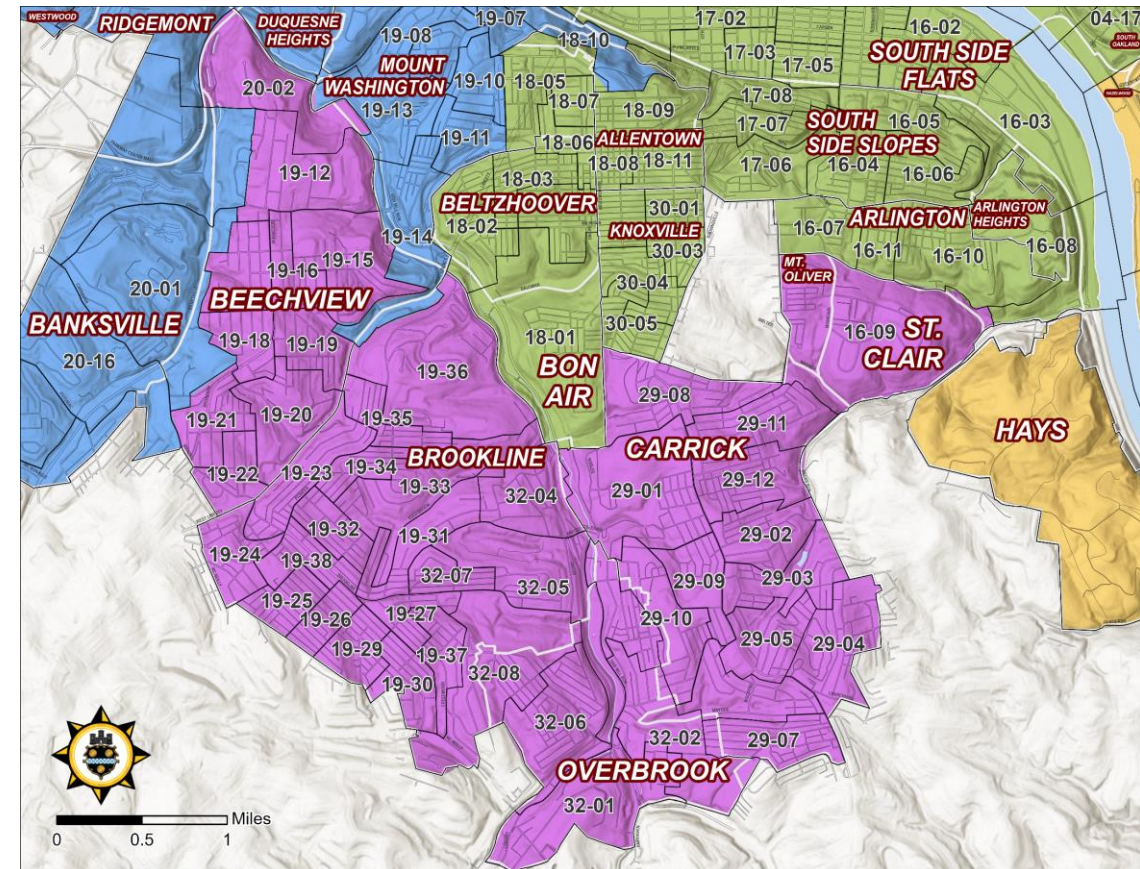


# RAC DRAFT MAP: District 4

Ward-District	Neighborhood	Current District	New District
19-14	Mount Washington	4	2
18-1	Bon Air	4	3
16-8	St Clair	3	4



CURRENT MAP

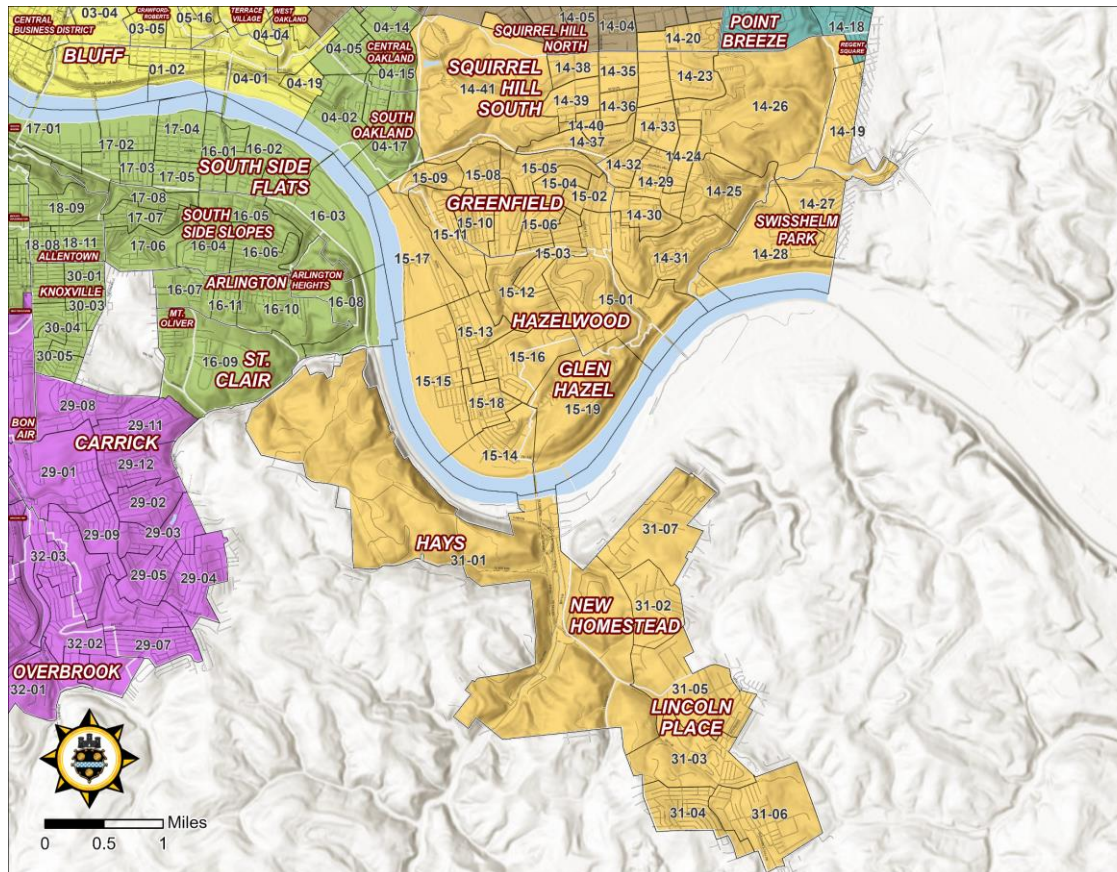


RAC PROPOSAL

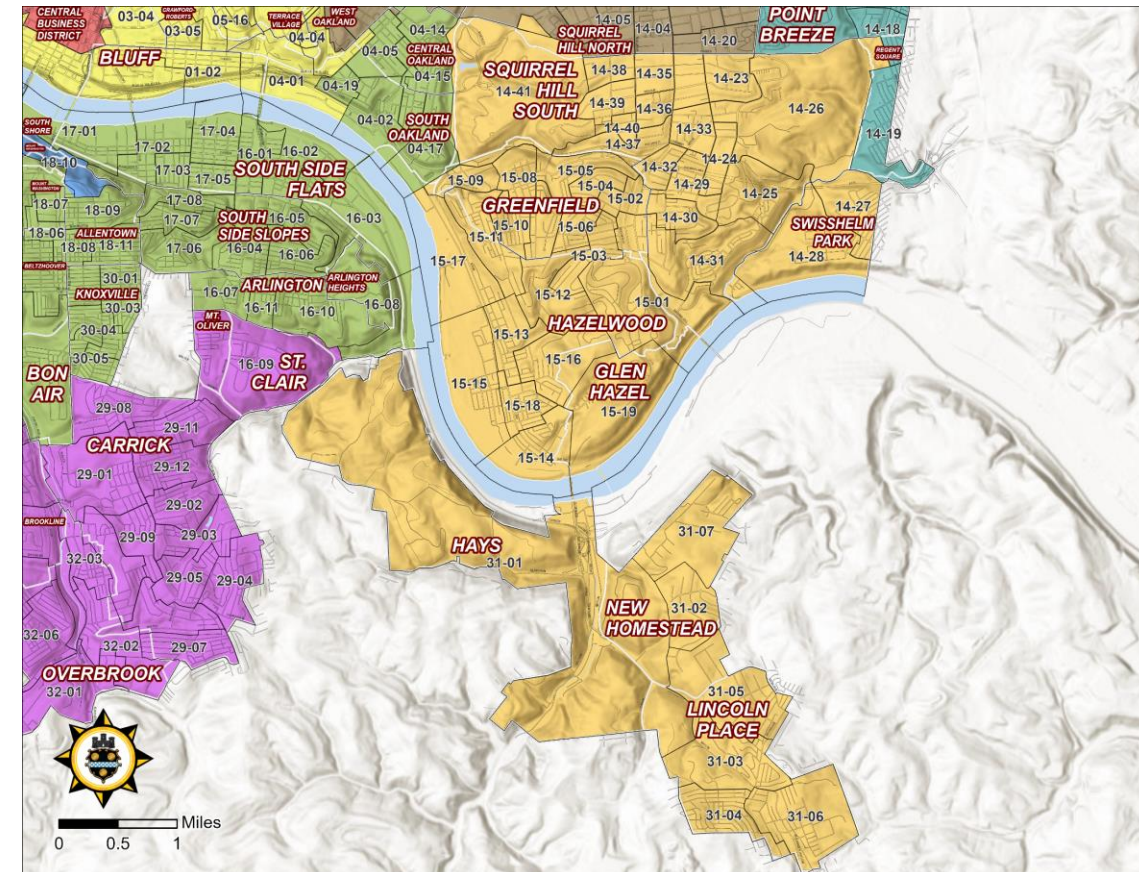


# RAC DRAFT MAP: District 5

Ward-District	Neighborhood	Current District	New District
14-20	Squirrel Hill	5	8
14-19	Regent Square	5	9



CURRENT MAP



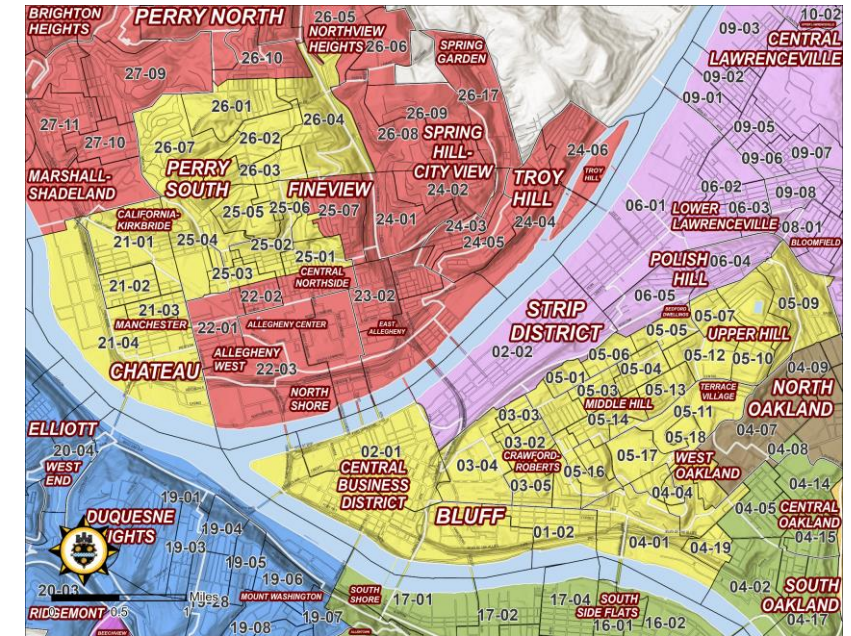
RAC PROPOSAL



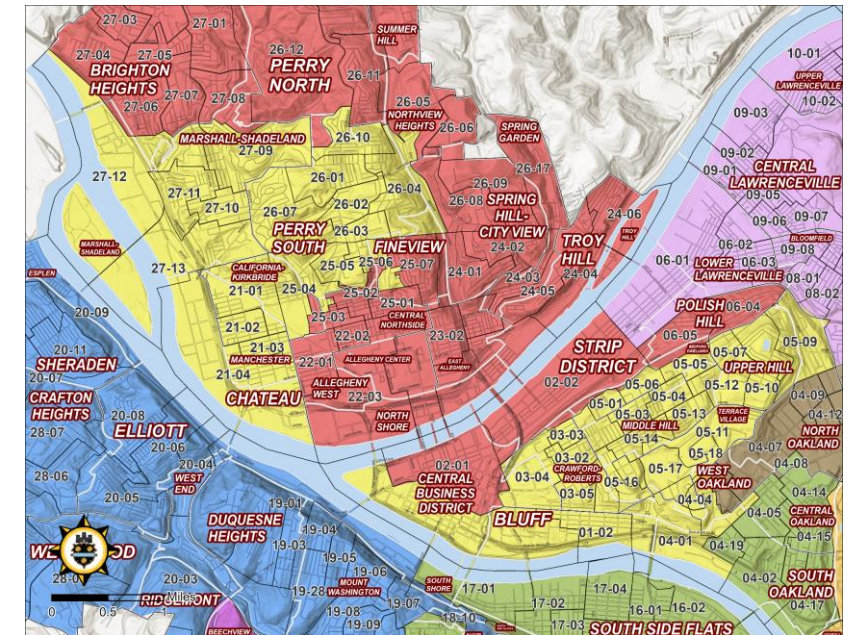
# RAC DRAFT MAP: District 6

Ward-District	Neighborhood	Current District	New District
27-9	Marshall-Shadeland	1	6
27-10	Perry South	1	6
27-11	Marshall-Shadeland	1	6
27-12	Marshall-Shadeland	1	6
27-13	Marshall-Shadeland	1	6
25-1	Central Northside	6	1
25-2	Central Northside	6	1
25-3	Central Northside	6	1
2-1	Downtown	6	1
4-6	Oakland	6	8
4-19	Oakland	6	3

CURRENT MAP



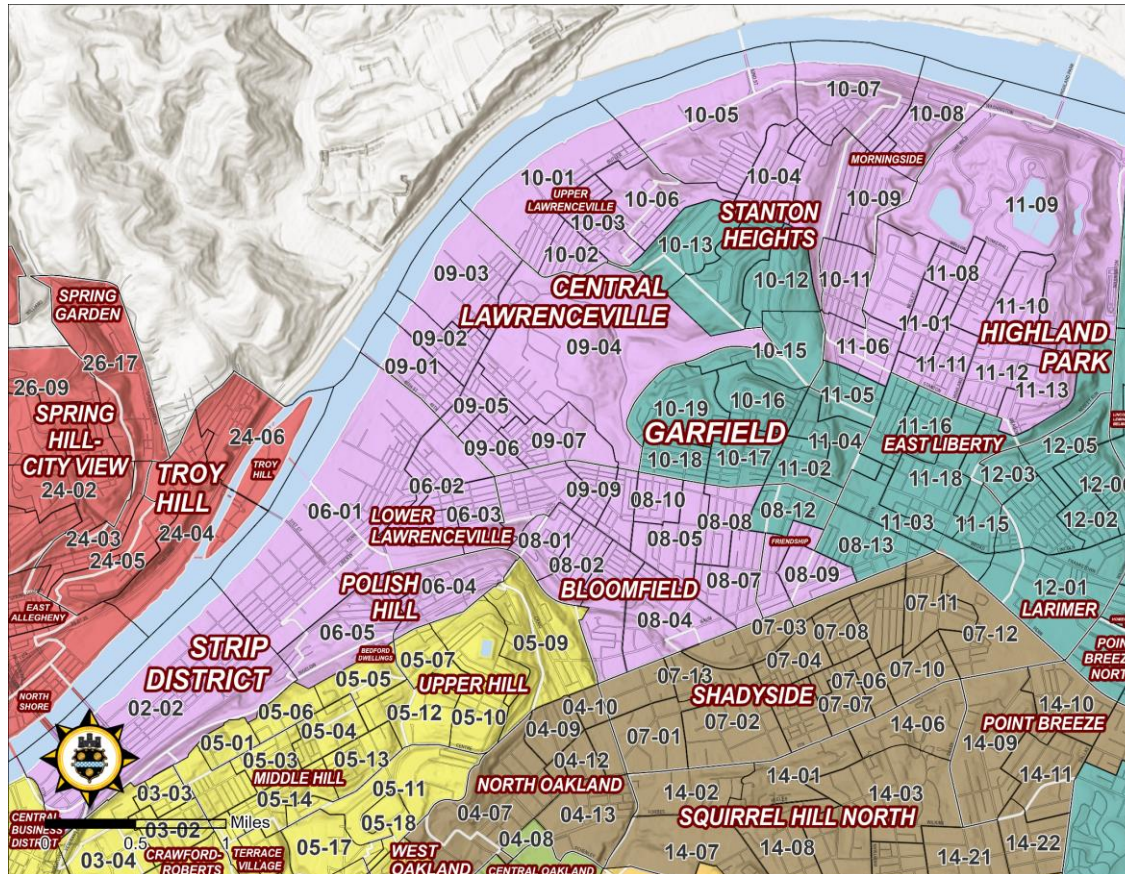
RAC PROPOSAL



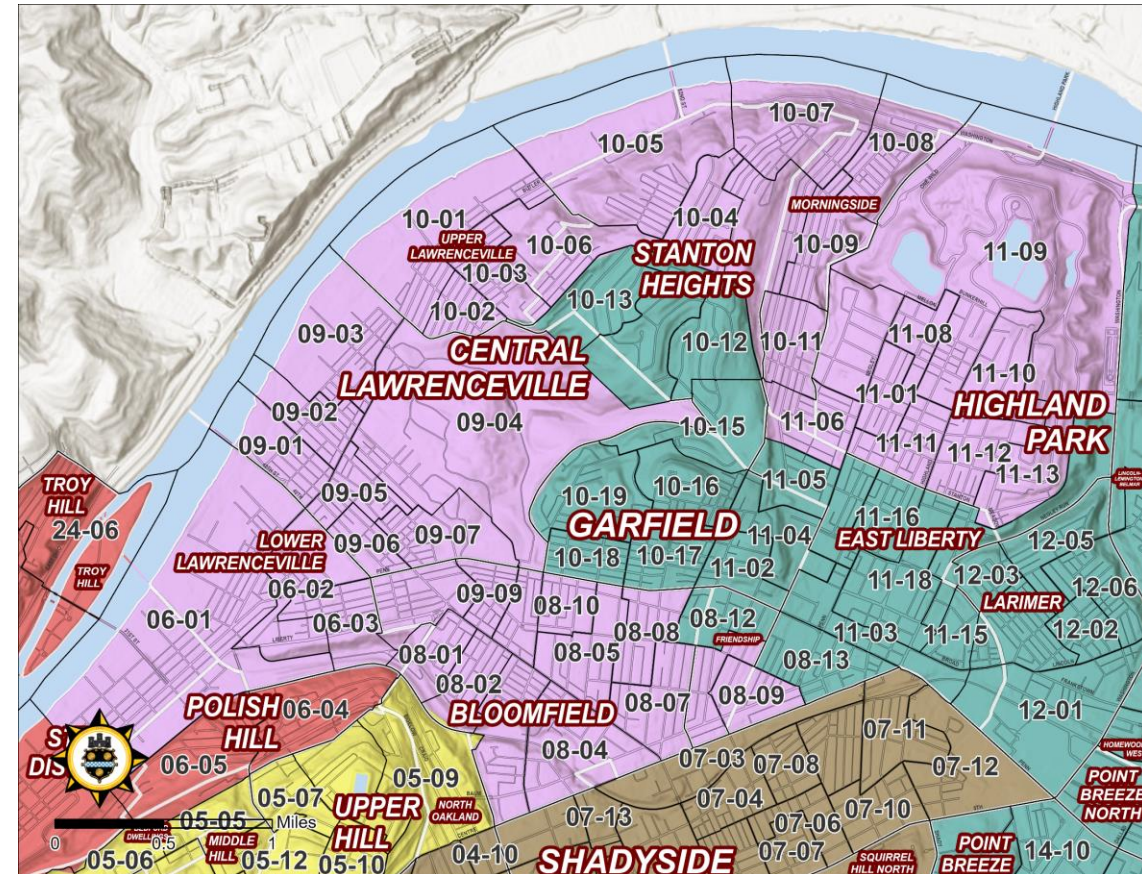


# RAC DRAFT MAP: District 7

Ward-District	Neighborhood	Current District	New District
2-2	Strip District	7	1
6-4	Polish Hill	7	1
6-5	Polish Hill	7	1



CURRENT MAP

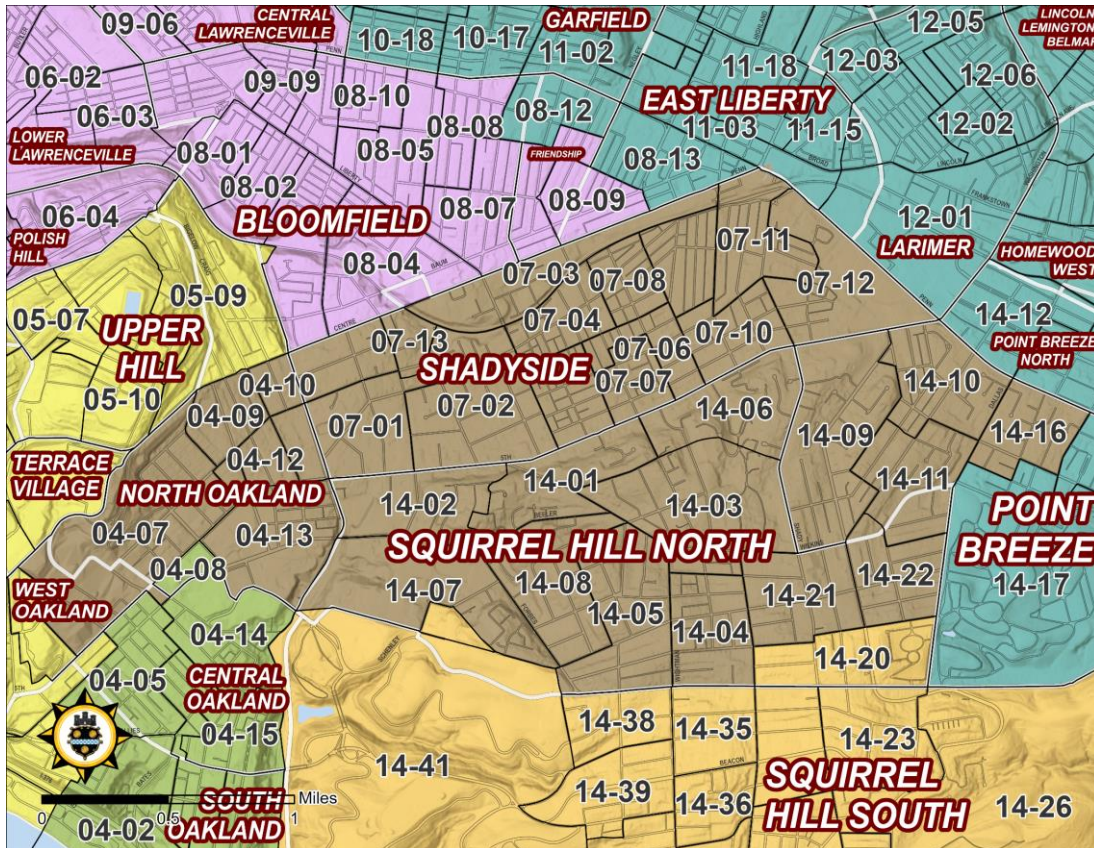


RAC PROPOSAL

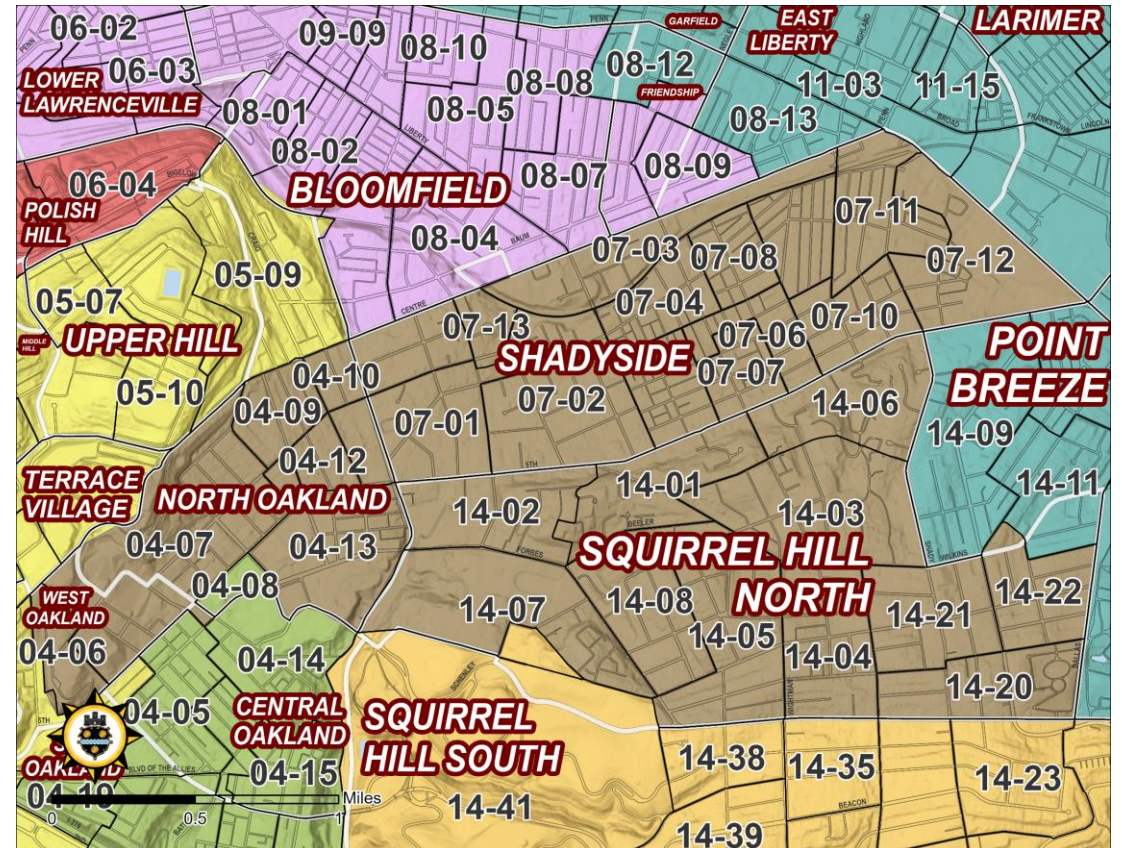


# RAC DRAFT MAP: District 8

Ward-District	Neighborhood	Current District	New District
4-6	Oakland	6	8
14-20	Squirrel Hill	5	8
14-9	Point Breeze	8	9
14-10	Point Breeze	8	9
14-11	Point Breeze	8	9
14-12	Point Breeze	8	9



## CURRENT MAP

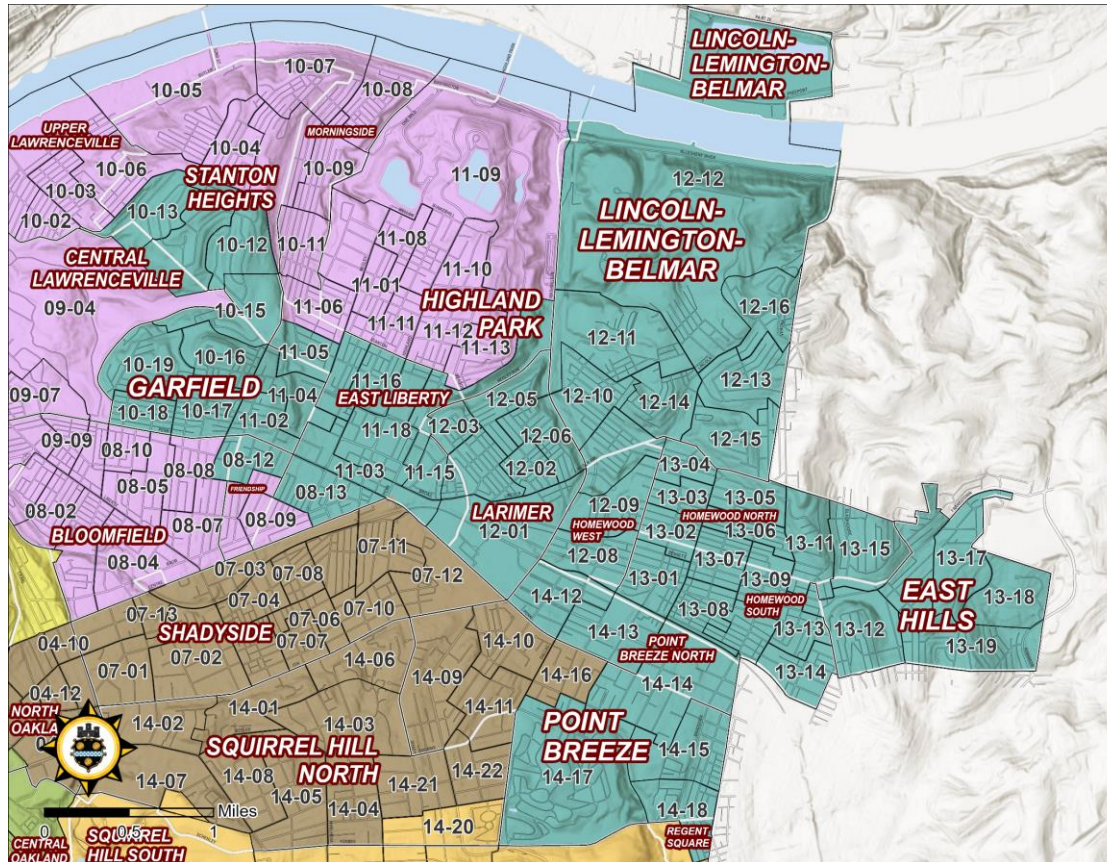


## RAC PROPOSAL

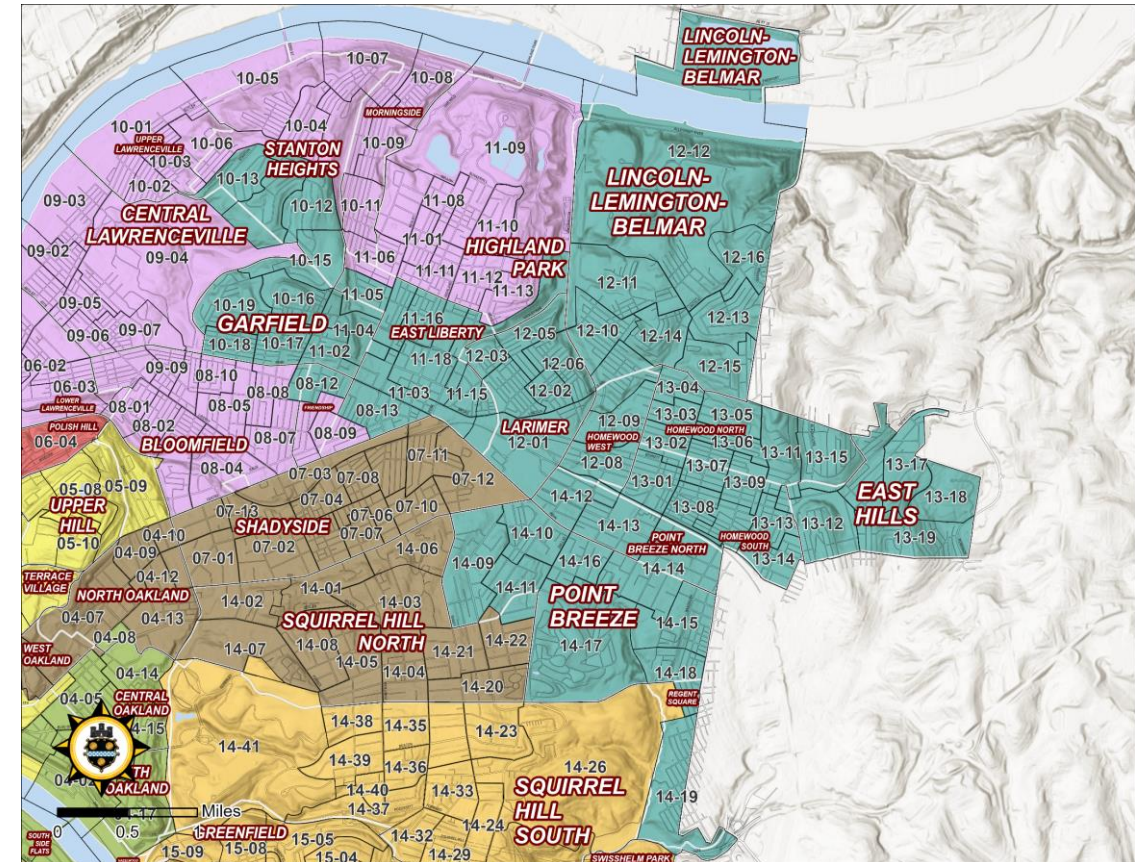


# RAC DRAFT MAP: District 9

Ward-District	Neighborhood	Current District	New District
14-9	Point Breeze	8	9
14-10	Point Breeze	8	9
14-11	Point Breeze	8	9
14-16	Point Breeze	8	9
14-19	Regent Square	5	9

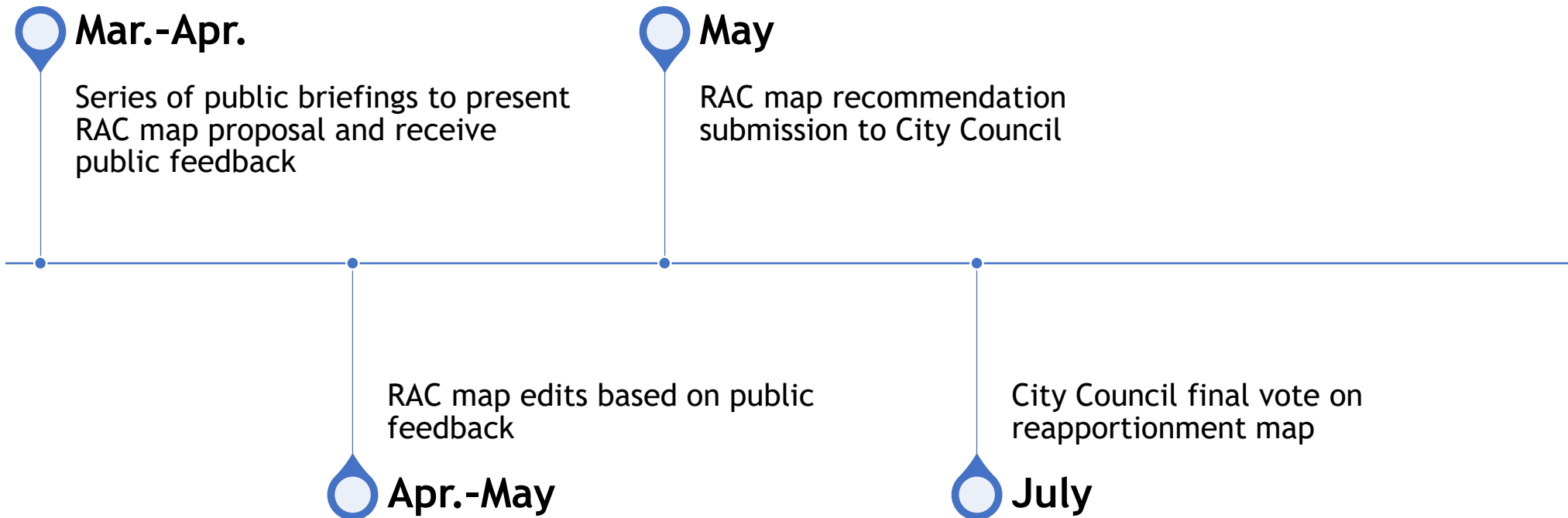


CURRENT MAP



RAC PROPOSAL

# NEXT STEPS



# UPCOMING PUBLIC HEARINGS

- **WEDNESDAY, MARCH 30 @ 6pm**  
Homewood YMCA  
7140 Bennett St  
Pittsburgh, PA 15208
- **THURSDAY, APRIL 7 @ 6pm**  
Pride Project Inc.  
227 Bonvue St  
Pittsburgh, PA 15214
- **WEDNESDAY, APRIL 13 @ 6pm**  
Pittsburgh Federation of Teachers  
10 S 19<sup>th</sup> St  
Pittsburgh, PA 15203
- **SATURDAY, APRIL 23 @ 12pm**  
Carnegie Library of Pittsburgh, Main  
South Wing Reading Room  
4400 Forbes Ave  
Pittsburgh, PA 15213
- **SATURDAY, APRIL 30 @ 1pm**  
Sheraden Healthy Active Living Center  
720 Sherwood St  
Pittsburgh, PA 15204



