

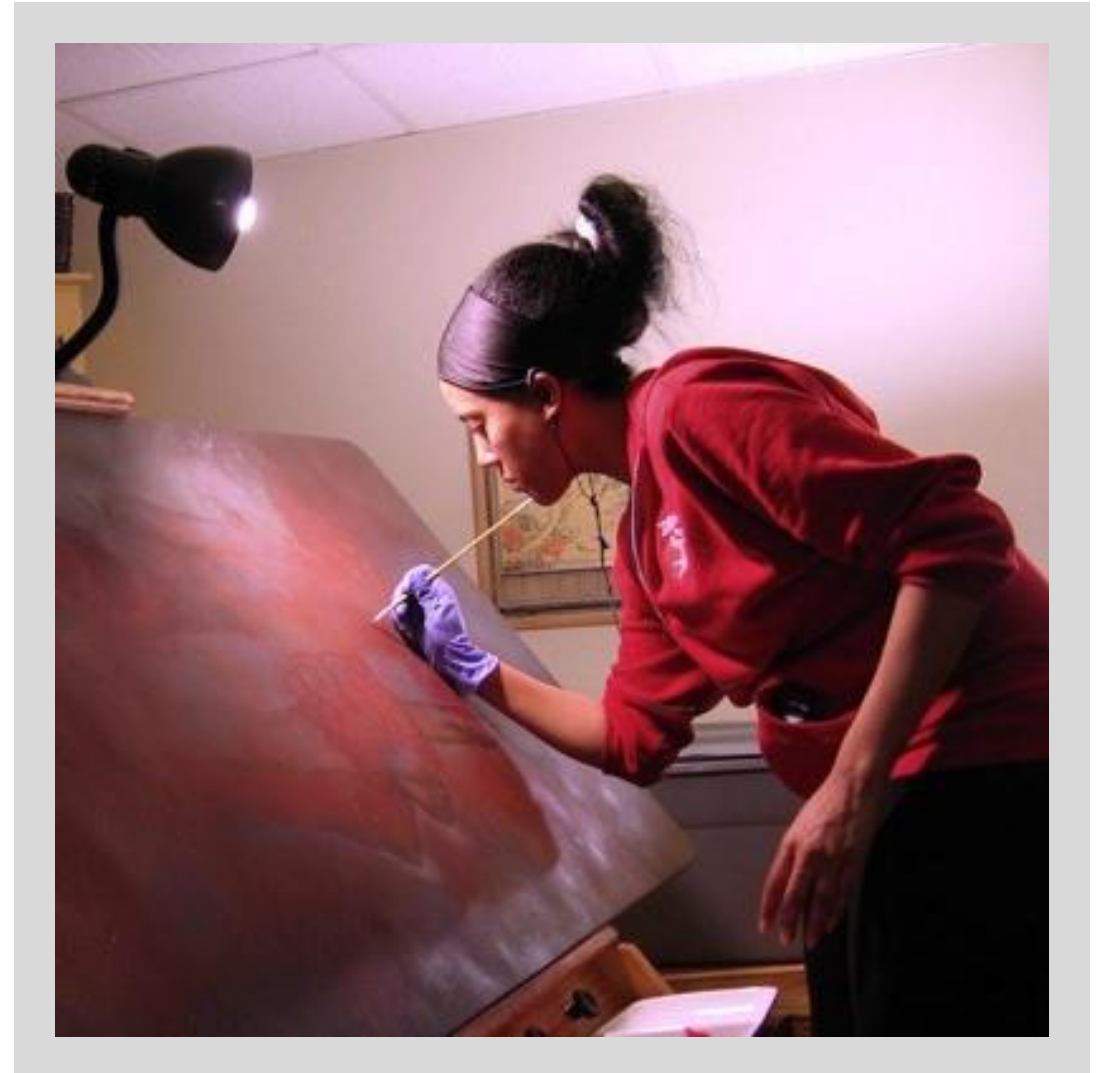
Art in Parks

Marlana Adele Vassar
Highland Park
Conceptual Review
10-27-21

Marlana Adele Vassar

Marlana Adele Vassar is a Pittsburgh-area artist and University of Pittsburgh alum (2006). Largely self-taught as an artist, Vassar's philosophy of balancing style and substance has attracted a diverse audience to her work. She weaves symbolism, surrealism and rich storytelling into figures and patterns, resulting in works that are personal yet open to interpretation.

Vassar began her career as a graphic designer with the intention to move into game design, however a series of personal events turned her focus to the world of fine art. Since 2008, her work has been featured nationwide in museums, galleries and public projects. Known for her lavish style and attention to detail, Vassar has earned numerous accolades for her works. Her most recent accomplishments include public projects with the City of Pittsburgh and Oasis Community Kitchen, along with several private commissions.



Marlana Adele Vassar

Artist Statement:

My artistic philosophy is a balance of style and substance. Whether I am translating community stories or recounting my own, my goals are to keep strong designs, color and aesthetics in mind while incorporating meaningful images and vivid storytelling. I primarily focus on symbolism and surrealism with lush environments in my personal and public works, and include figures when I feel that human representation is necessary. While my public projects are site-specific and adjusted to reflect the communities they are placed in, each of my designs contain imagery and ideas that are relatable to many viewers.



Previous Work



Previous Work



Highland Park

Highland Park opened in 1893 on farmland once owned by the Negley family. The park covers 377 acres.

Features of the park include a Victorian entry garden, swimming pool, athletic courts, bike track, community gathering spaces, hiking trails, and the Highland Park Reservoir. The park also contains the Pittsburgh Zoo, first opened in 1898.



Highland Park



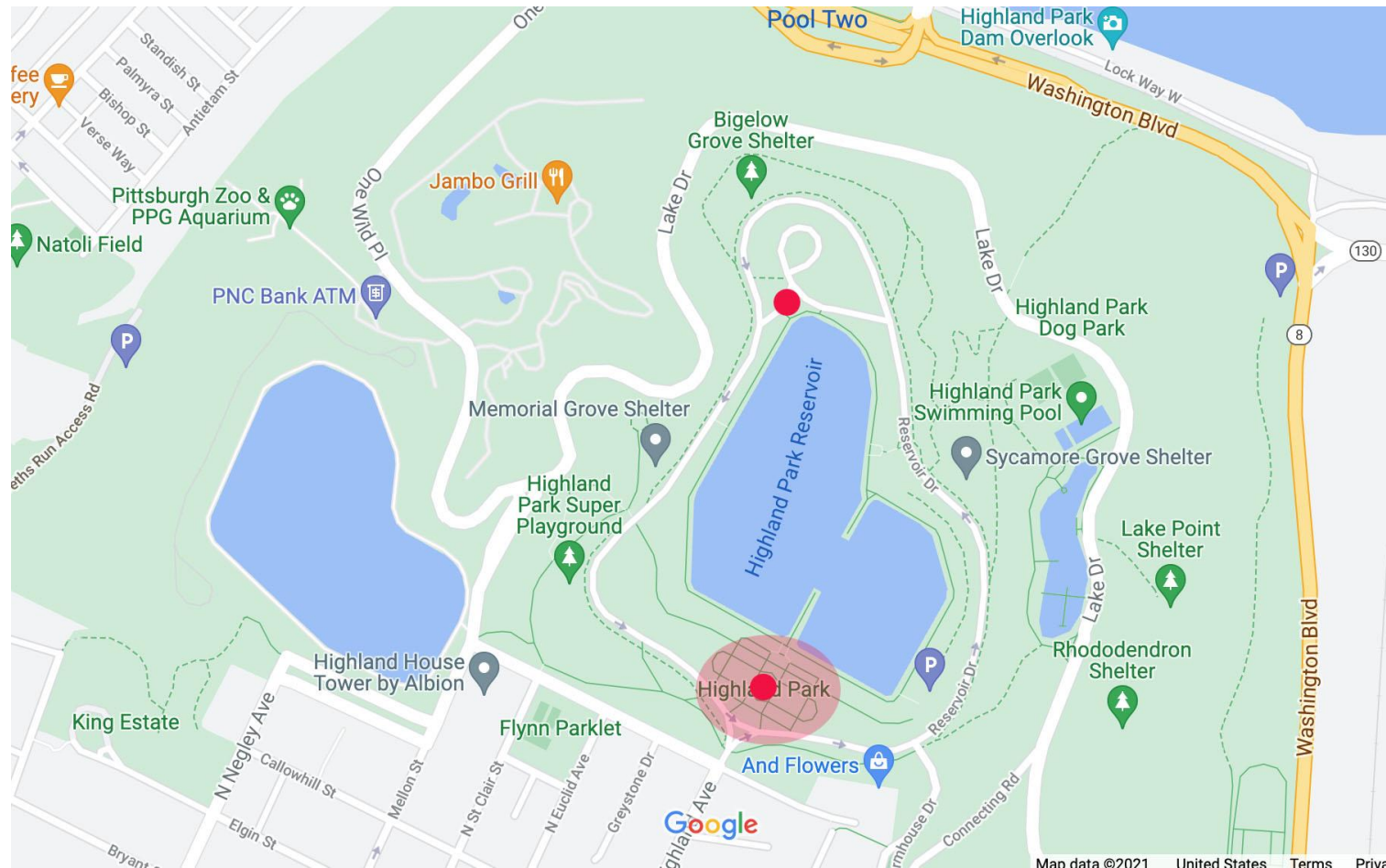
Project Narrative



Concept Design



Possible Locations



Possible Locations



Possible Locations





Questions & Discussion