



Davis Avenue Pedestrian/Bike Bridge Public Art

Date: August 2023

Review type: Hearing and Action

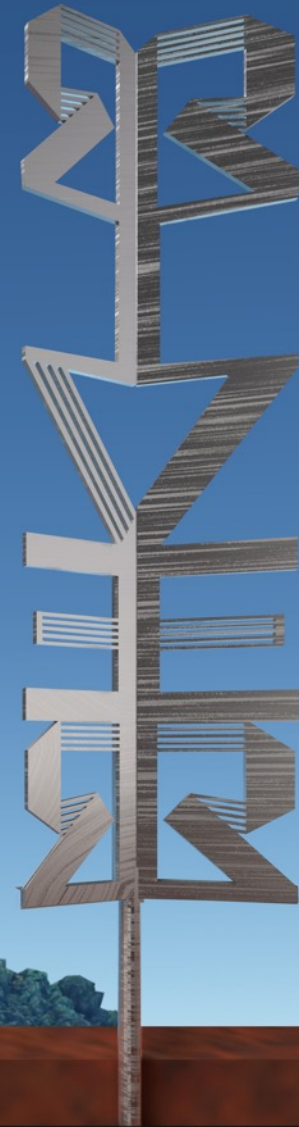
Project: *River to Riverview: Breezes Between*

Artist: Lori Hepner

RIVER to RIVERVIEW: BREEZES BETWEEN

River to Riverview: Breezes Between is a public art project by artist **Lori Hepner** for the reconstruction of the Davis Avenue Bridge as a pedestrian and bike bridge that will reconnect the Pittsburgh neighborhood of Brighton Heights to Riverview Park, the largest city park on the Northside of Pittsburgh.

Two permanent stainless steel sculptures form “**River to Riverview**,” with “**Breezes Between**” being a 36-month temporary public art AR activation of the sculptures.

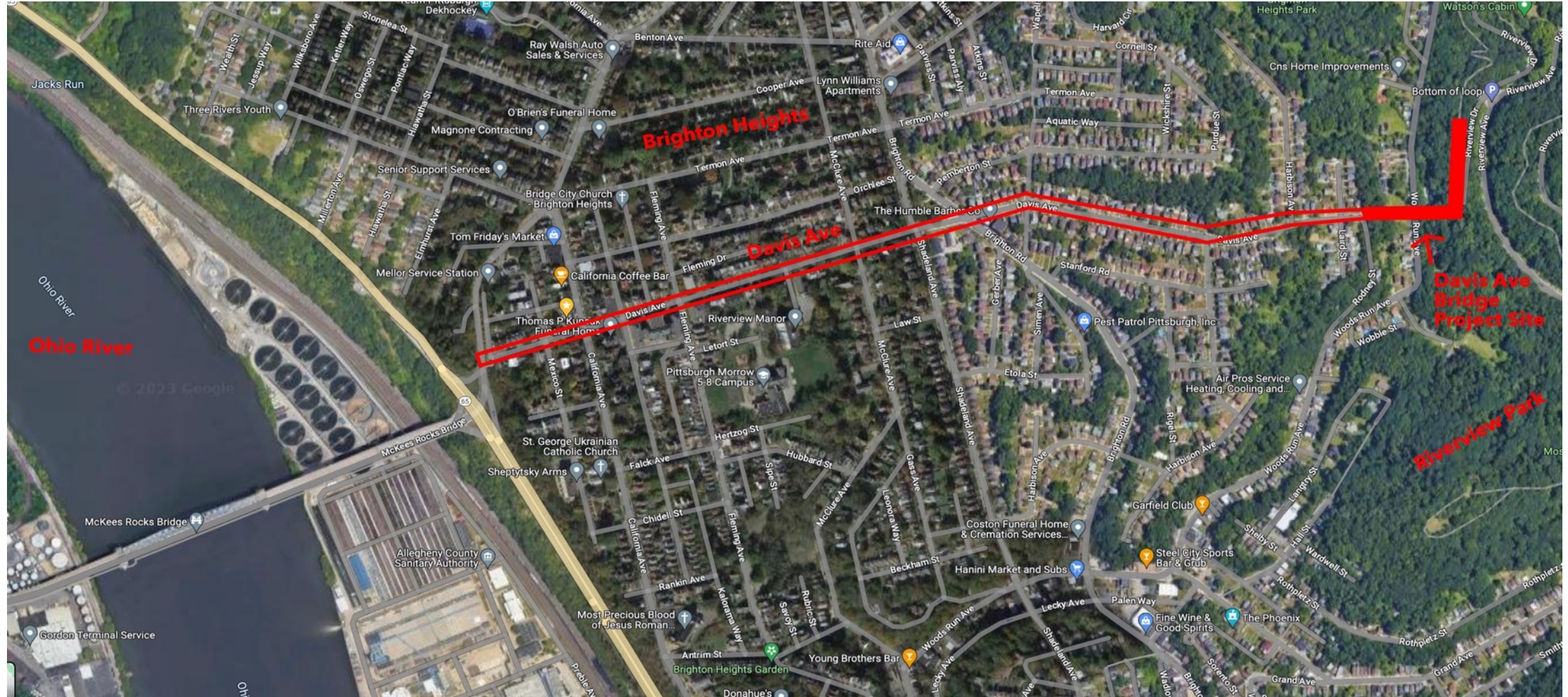


RIVER to RIVERVIEW: BREEZES BETWEEN

River to Riverview: Breezes Between is inspired by walks down Davis Avenue, which spans the neighborhood from the Ohio River to Riverview Park.

The artist has lived in the Brighton Heights community for 16 years. She moved to the California & Davis intersection in 2007, knowing that Riverview Park was just a walk away. However, the original 1898 Davis Avenue Bridge was unexpectedly deemed unsafe and imploded a week later in May 2009.

RIVER to RIVERVIEW : Map View BREEZES BETWEEN



RIVER to RIVERVIEW : Overview

BREEZES BETWEEN

The reconnection of Davis Avenue to Riverview Park gives the community the opportunity to walk across a small expanse of sky and treetops above Woods Run, 300 ft below. The *River to Riverview* permanent stainless-steel sculptures commemorate this reconnection.

The community becomes the *Breezes Between* as the people move across the sky and will become a part of the artwork through Augmented Reality (AR) animations that are anchored by each of the two sculptures temporarily for 36 months. Metal QR codes will be used to send people to the City's project website with links to download the Artivive app download. The QR codes will be deinstalled after 36 months and the AR deactivated.

RIVER to RIVERVIEW : Images BREEZES BETWEEN

Brighton Heights Side

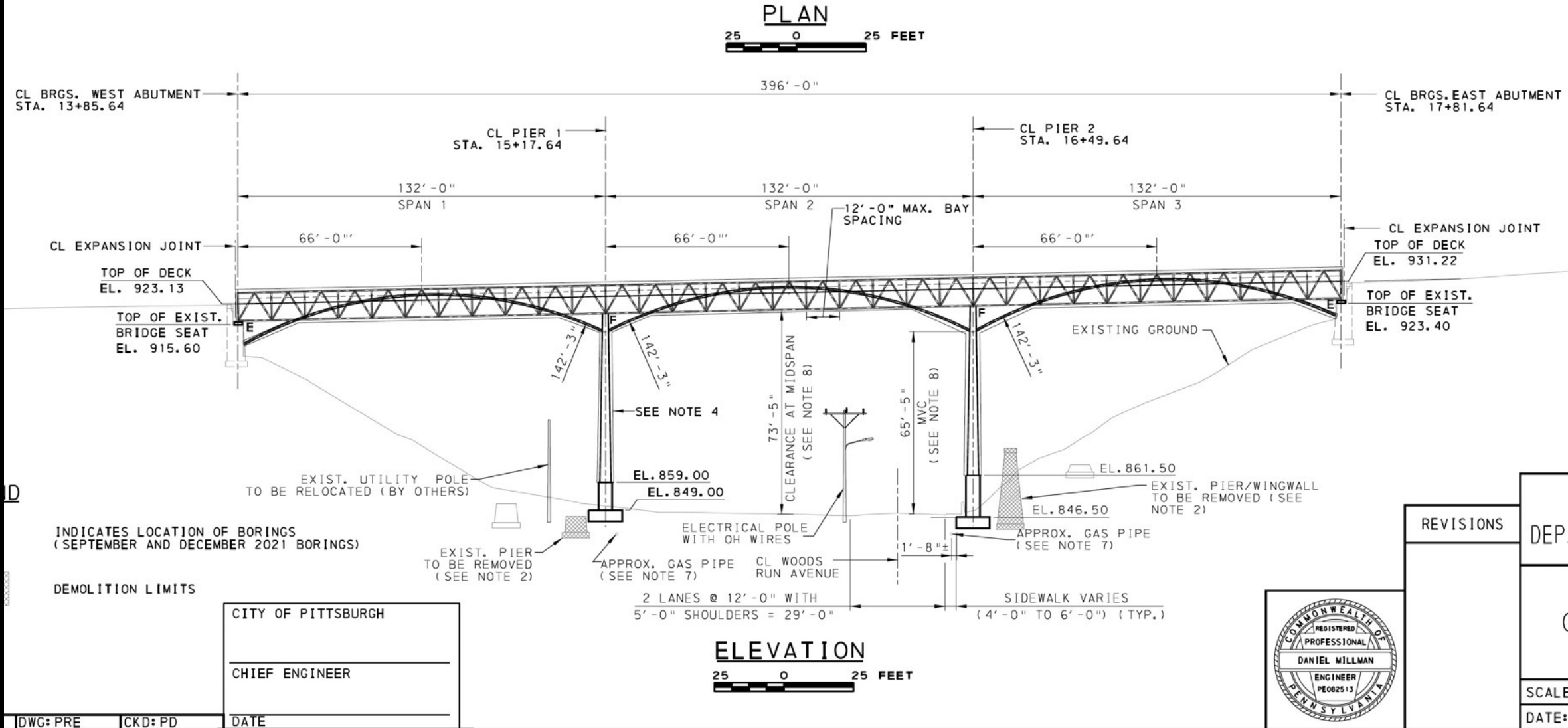


RIVER to RIVERVIEW : Images

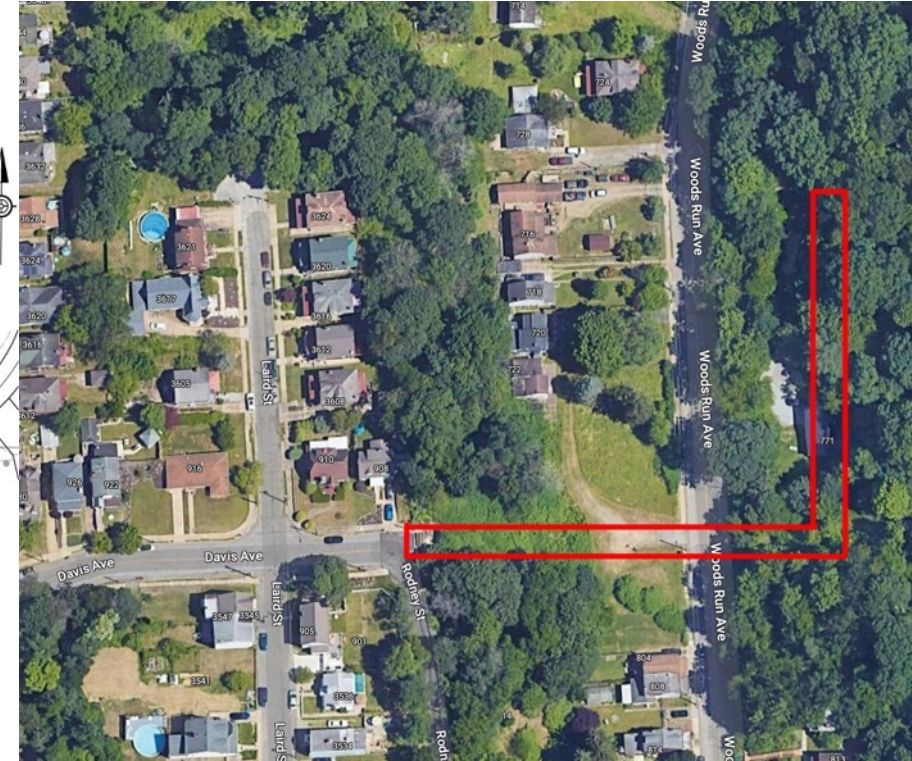
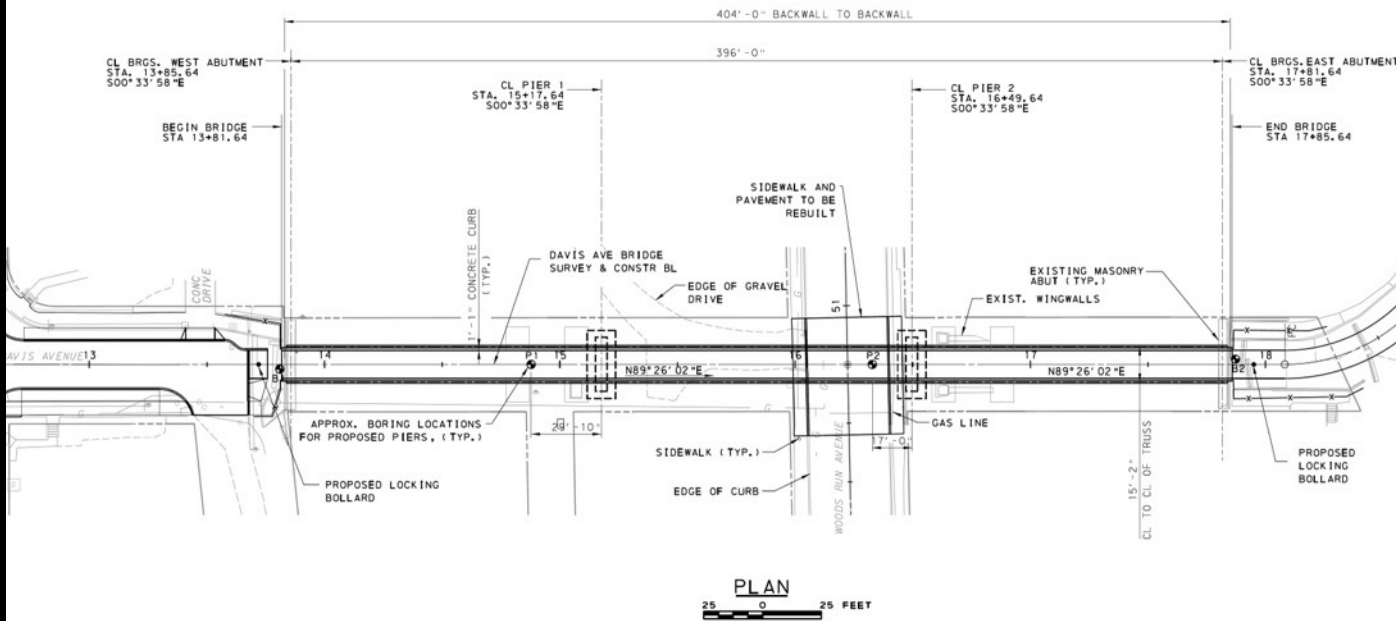
Riverview Park Side



RIVER to RIVERVIEW : Site Plan BREEZES BETWEEN Bridge



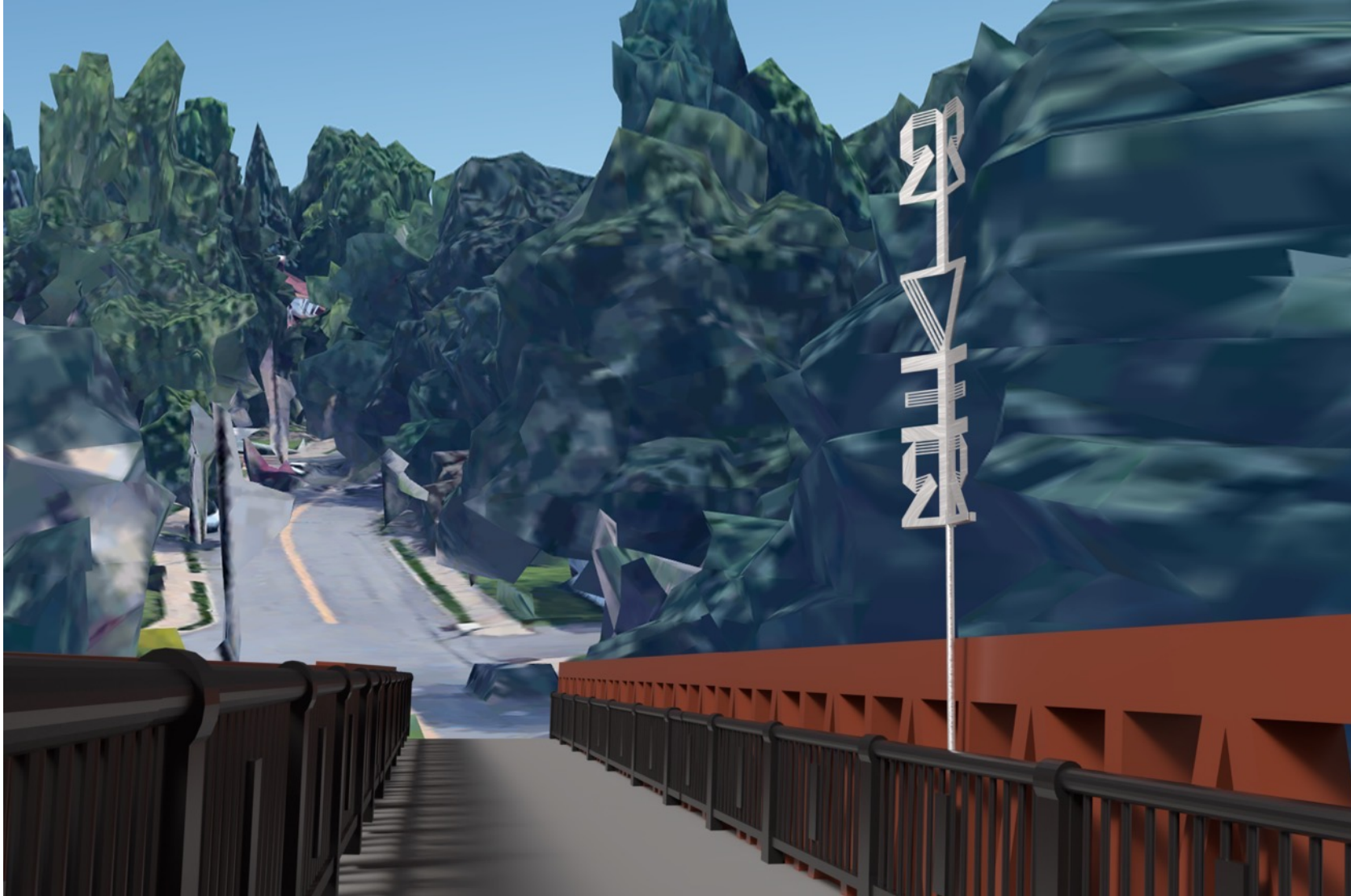
RIVER to RIVERVIEW : Site Plan BREEZES BETWEEN



RIVER to RIVERVIEW: BREEZES BETWEEN

In Situ

Brighton Heights side of the Davis Avenue Bridge, looking back at Davis Avenue.



RIVER to RIVERVIEW: BREEZES BETWEEN

In Situ

Brighton Heights side of the Davis Avenue Bridge, Looking at Riverview Park.



14.75" wide x
57.6" tall letters

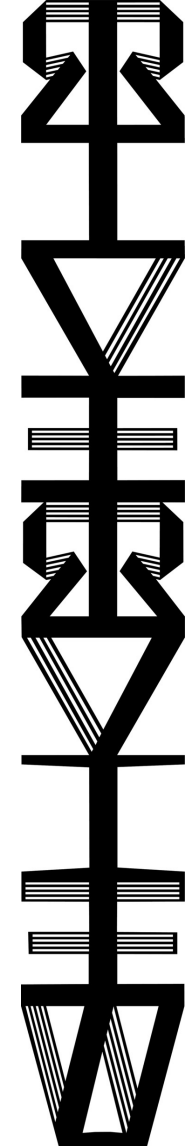
9.2' tall installed
On 3.5" outer
diameter stainless
steel pole.

Mounted to the
bridge via
concrete
anchored bolts in
the 8" gap
between bridge
truss and hand
railing.

RIVER to RIVERVIEW: BREEZES BETWEEN

In Situ

Riverview Park side of the Davis Avenue Bridge.



RIVER to RIVERVIEW: BREEZES BETWEEN

In Situ

Riverview Park side of the Davis Avenue Bridge, looking back at Davis Avenue.



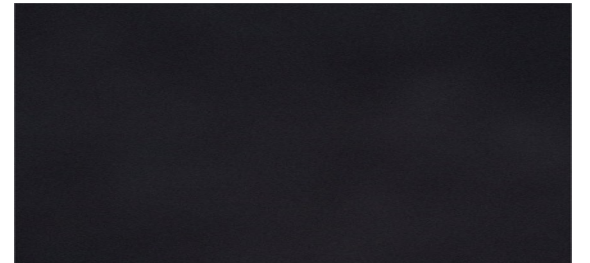
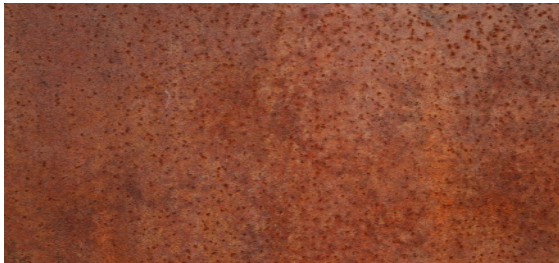
14.75" wide x
103" tall letters

12.3' tall installed
On 3.5" outer
diameter stainless
steel pole.

Mounted to the
bridge via
concrete
anchored bolts in
the 8" gap
between bridge
truss and hand
railing.

RIVER to RIVERVIEW : Materials BREEZES BETWEEN

The Bridge's truss will be made of rust colored weathering steel, the handrails are black aluminum, and the concrete deck is gray concrete.



Stainless Steel in 220 DA (non-directionally sanded) finish has been chosen for the sculptures & QR codes because it will contrast nicely against the rust-colored structure of the Bridge, sky, and trees, as well as being corrosion resistant.

The permanent installation of the two *River to Riverview* stainless-steel sculptures has been created so that there will be minimal maintenance required by the City.

RIVER to RIVERVIEW: In Situ BREEZES BETWEEN



The QR Codes will be CNC milled out of Stainless Steel with the raised areas treated with black finish.

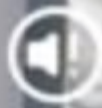
Cameras on personal mobile devices can read the QR as a website, which will send users to the City's associated project website for AR app download links.

RIVER to RIVERVIEW : Temporary BREEZES BETWEEN AR Activation

Breezes Between is a temporary public art component that will activate the permanent ***River to Riverview*** sculptures for 36 months. Visitors will be prompted to download the free ***Artivive app*** (available for [iOS](#) and [Android](#) downloads in the associated app stores) via the on-site metal QR codes that will be installed temporarily.

Each month, new Augmented Reality animations, created in the community artmaking workshops in Riverview Park and Brighton Heights, will be placed into rotation. This will be managed by the artist via the online AR web creation platform: *bridge.artivive.com* over the 36 months.

After 36 months, the QR codes will be deinstalled from the site and the AR deactivated on the Artivive platform. Documentation of the AR will be posted on the City's associated project webpage.





Use the Artivive App on your mobile device to try out the AR animation by pointing it at this image.

RIVER to RIVERVIEW : Community BREEZES BETWEEN Artmaking

The artist will hold collaborative community art making workshops in Brighton Heights & Riverview Park to allow the people of the neighborhood to capture each other via Hepner's light-painting system.

- **9/9/23: *Riverview Park Day*** @ Riverview Park Activities Building hosted by the Friends of Riverview Park.
- **12/2/23: *Bright the Night*** @ this outdoor evening event on California Ave hosted by the Brighton Heights Citizen's Federation.

RIVER to RIVERVIEW : Community BREEZES BETWEEN Artmaking

The artist will hold collaborative community art making workshops in Riverview Park on 9/9/23 during *Riverview Park Day* hosted at the Riverview Park Activities Building with Friends of Riverview Park and in Brighton Heights on 12/2/23 during the Brighton Heights Citizen Federation's *Bright the Night* event on California Ave.



Prior community workshop participants in the artist's light painting workshops with wearable LEDs and 6' tall LEDs.