



## Public Art & Civic Design Commission

# Hearing & Action Application

Arsenal Park Public Art	
Applicant Name	Sasha Reisin, Carolina Huffmann
Applicant Organization	
What is your relationship to the project?	Artists
Co-applicant	Department of City Planning
Who will be representing this project at a hearing?	Sasha Reisin, artist; Carolina Huffmann, artist; Tony Cavalline, DCP Project Coordinator
Prior Commission Review	Preliminary Review June 2023, Hearing & Action August 2023 (Continuance) Phase 1 park design was given Final Art Commission Approval in April 2022.
Project Address	Arsenal Park
Cross Streets and/or other relevant location information	Located between 39 <sup>th</sup> and 40 <sup>th</sup> streets and between Butler St and Penn Ave.
Neighborhood	Lower Lawrenceville
Development Activities Meeting	n/a
Project Duration	Permanent
Please give a summary description of the project.	<p>The Arsenal Park Master Plan was created in 2015, when Friends of Arsenal Park, a group of dedicated residents and users, organized to transform a deteriorating outdoor space into a meaningful, well-used public gathering place. This plan was the basis for the park renovation work, which in Phase 1 includes pedestrian connections, ADA access, an imaginative playground, shelter, lighting, and other amenities.</p> <p>A Request For Proposals was released in December of 2021. The RFP was designed in response to the community process previously undertaken by the Department of Public Works for the plans and design of the park. The inclusion of a public art project had been a component of these plans from the beginning, and the goals of the RFP reflected the input of the community during that process. The engagement site for the park plans can be found at <a href="https://engage.pittsburghpa.gov/arsenal">https://engage.pittsburghpa.gov/arsenal</a></p> <p>The artist selection process was conducted by Public History, Art, and Design staff. Panelists were first asked to score artist applications, which were then used to facilitate discussion and rounds of voting in a selection panel meeting. This was followed by artist interviews for top candidates. The selection panel members were: Andrew Moss (Art Commission President/Lawrenceville</p>

	<p>resident), Lauren Byrne Connelly (Lawrenceville Corporation/Lawrenceville resident), Dave Breingan (Lawrenceville United/Lawrenceville resident) Reiko Yamamoto (Lawrenceville-based artist), Andrea Ketzell (Department of Public Works), and Sarah Minnaert (Public History, Art, and Design/Lawrenceville resident).</p> <p>The attached materials detail the artists's concepts, themes, and design iterations. The artists utilized extensive community feedback to create a concept for a series of sculptures which represent the repeated themes they experienced through community storytelling.</p>
Who is this project intending to be used or experienced by?	All users of the park, with a focus on local community members as this is a neighborhood park. Particular emphasis was made in the RFP that the artwork should be appropriate for an all-ages community space and emphasize themes of community and play.
What users/stakeholders/community members have been involved so far?	<p>The artists' involvement and dynamic experience with the community was multi-tiered:</p> <p>The artists conducted individual interviews with many community stakeholders to acquire in-depth knowledge about the park and neighborhood's cultural heritage.</p> <p>Digital workshops were held to invite community members to share stories related to the park, allowing participants to express their experiences and contributions through imagery.</p> <p>An internet survey collected stories, experiences, and imagery related to the park, enabling a continuous and extensive engagement with the public.</p> <p>A workshop held with youth at Arsenal School focused on creating visual representations of the stories shared through the participatory process.</p>
What is the timeline of implementation?	Park construction is underway and artwork installation will take place in fall.
Are there plans for future expansion of this project?	The park design itself is in Phase 1; future renovations will take place in Phase 2.
What is the budget for this project, and what are the funding sources?	The budget is \$17,000, and is paid for through the City's Percent For Art program.
Who will be responsible for maintenance of this project, and are there dedicated sources of funding for maintenance?	<p>This project will be owned by the City, and will be maintained through available funds allocated to the Public History, Art, and Design Division in the City's annual budget.</p> <p>The specifications for the galvanized steel with powder coating include an expected fade of &lt;5 Delta E over the course of ten years (Delta E cmc range being from 0 10 100). Specifications for this product can be found in the attachedthe application materials.</p>
If the project has an online engagement page, please provide the website address.	<a href="https://engage.pittsburghpa.gov/arsenal/arsenal-public-art">https://engage.pittsburghpa.gov/arsenal/arsenal-public-art</a>

Please explain any time limitations, budget restrictions, or other conditions that are affecting the scope of this project.	None beyond the expected installation in fall 2023.
Please include any additional information necessary for project review.	<p>Sasha Reisin (Argentina/California) started practicing street art in 2012 with the group Primo, portraying foreign indigenous cultures. Later, his work developed into focusing on the relationship between public art and its social environment, often in marginalized neighborhoods. In 2017 he co-founded the art collective MUTA (Urban Movement for Artistic Transformation), starting with a cultural house in Buenos Aires and then traveling across Latin America, organizing participatory urbanism projects with local communities. Currently, his practice deals with the collective memories and native cosmologies of Latin American heritage, creating shared immersive experiences to reinforce local community connections.</p> <p>Urbanismo Vivo (Argentina) is a team that seeks, through its projects, the connection between the people and the place where they live, promoting a more friendly, active, inclusive and humanized city. Their community and territory work is based on three main principles. Innovation: a way of designing processes from a creative point of view. Diversity: integrating multiple views and experiences from the territory. Exchange: collaborative work and in networks, both local and international, as the engine of major transformation processes.</p>
Letters of support	Councilwoman Deb Gross (District 7), Lawrenceville United / Lawrenceville Corporation, Evan Rumble, Christina Unitas, Department of Public Works

Commissioner Comments from Preliminary Review
---

Commissioner Comments	
Commissioner Name:	Christine Bethea
Comments:	No comments given.
Commissioner Name:	Anneliese Martinez
Comments:	This project seems to have engaged community members and has a thoughtful/contextual tone and approach. Very much looking forward to see them complete and to hear from fellow commissioners!
Commissioner Name:	Mikael Owunna
Comments:	<ol style="list-style-type: none"> <li>1. What input did the Public Art and Civic Design Commission have into the RFP for the project?</li> <li>2. Who were the community members, artists, and City staff on the selection panel?</li> <li>3. Please share the names of the fabricators that will be used for the project.</li> <li>4. The proposal states that “anodized metal will provide everlasting durability to the artwork” but all materials degrade over time and nothing is everlasting. Please share more precise estimates for the lifespan of the sculptures. Furthermore, with these being color statues, what is the rating for the color materials under longterm UV exposure and on what time span do you expect the colors to fade and need replacement? Please detail a preservation plan for the artwork and the color elements of the work in particular.</li> <li>5. Please provide information on what written materials will be included on the accompanying signage that is being produced with each sculpture.</li> <li>6. Please share any plans for community engagement after artwork installation.</li> </ol>

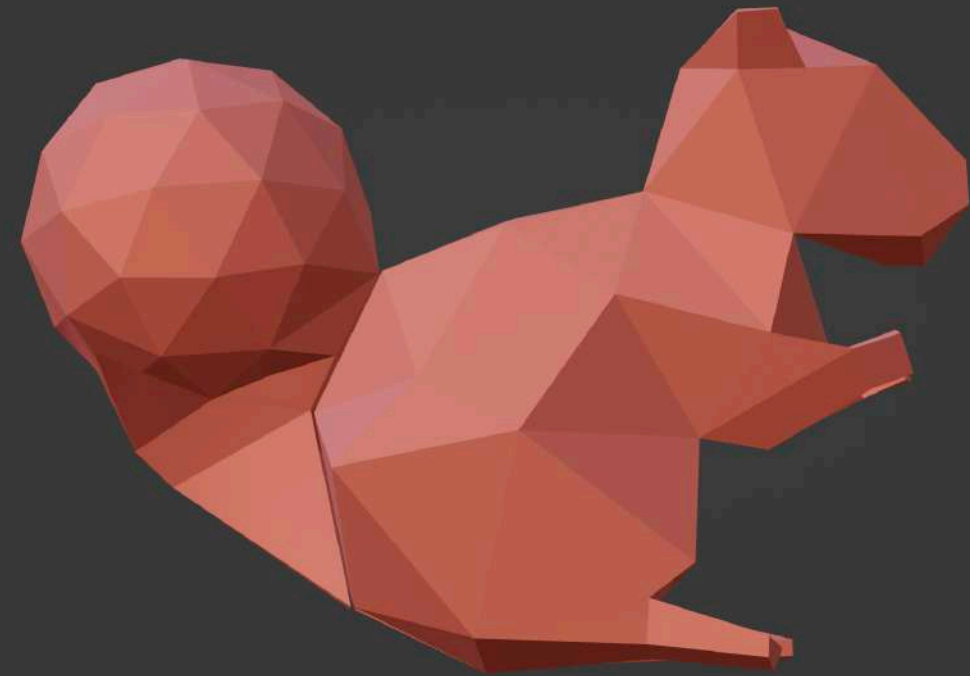
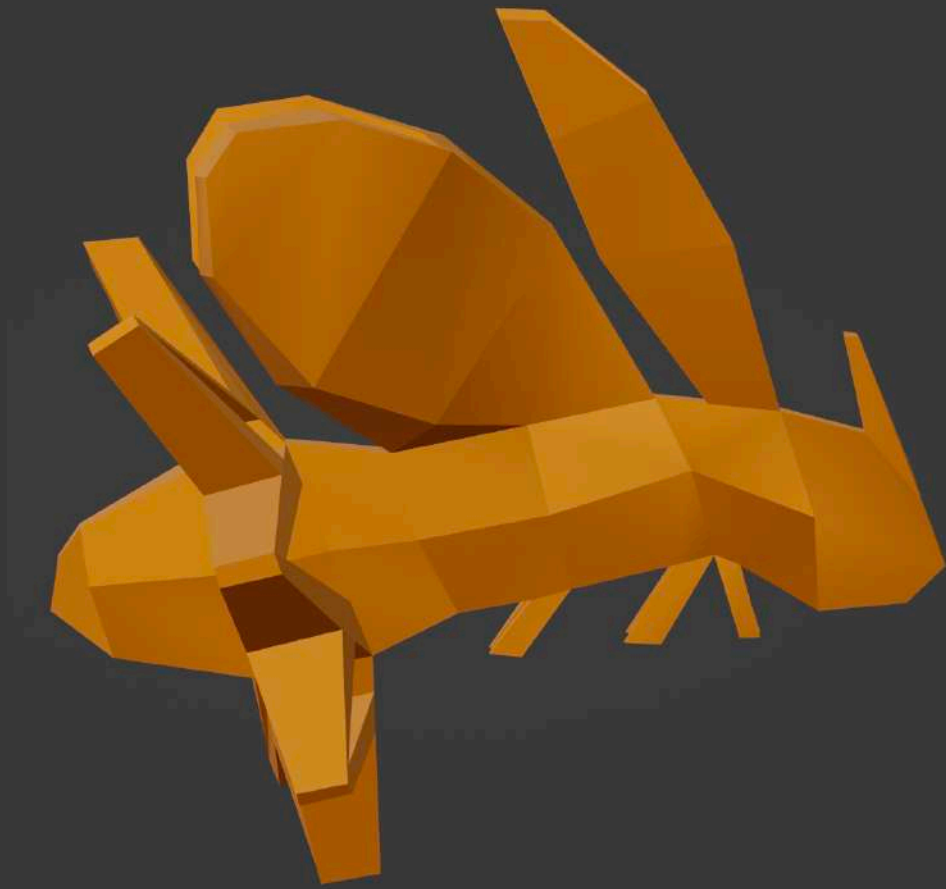


<b>Comments and Additional Materials Following Continuance</b>
--

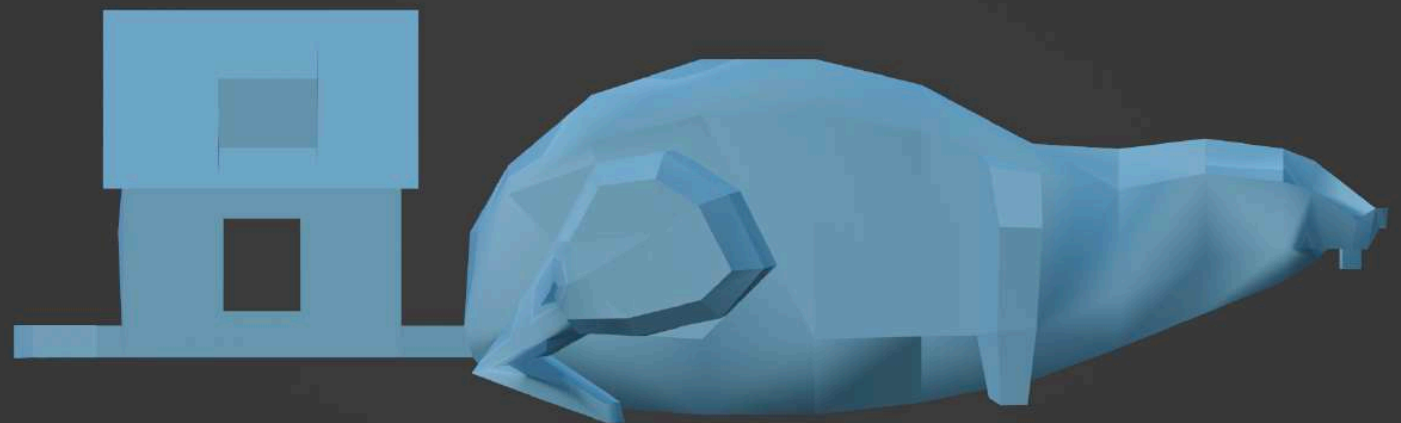
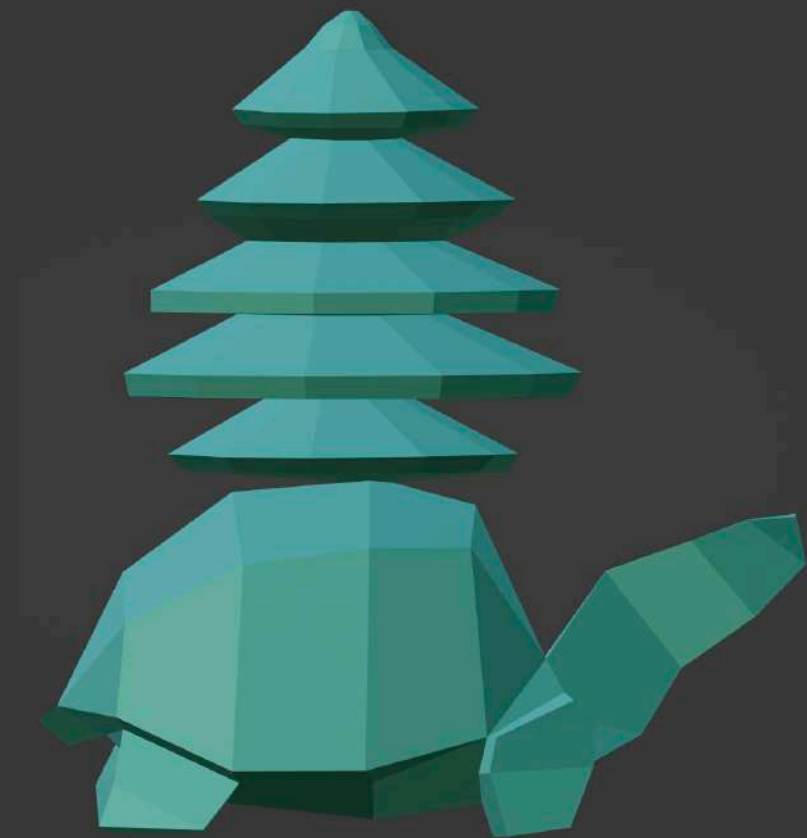
At the August 23 hearing, this project was given a Continuance, in order to provide the following materials for the September 27 hearing.

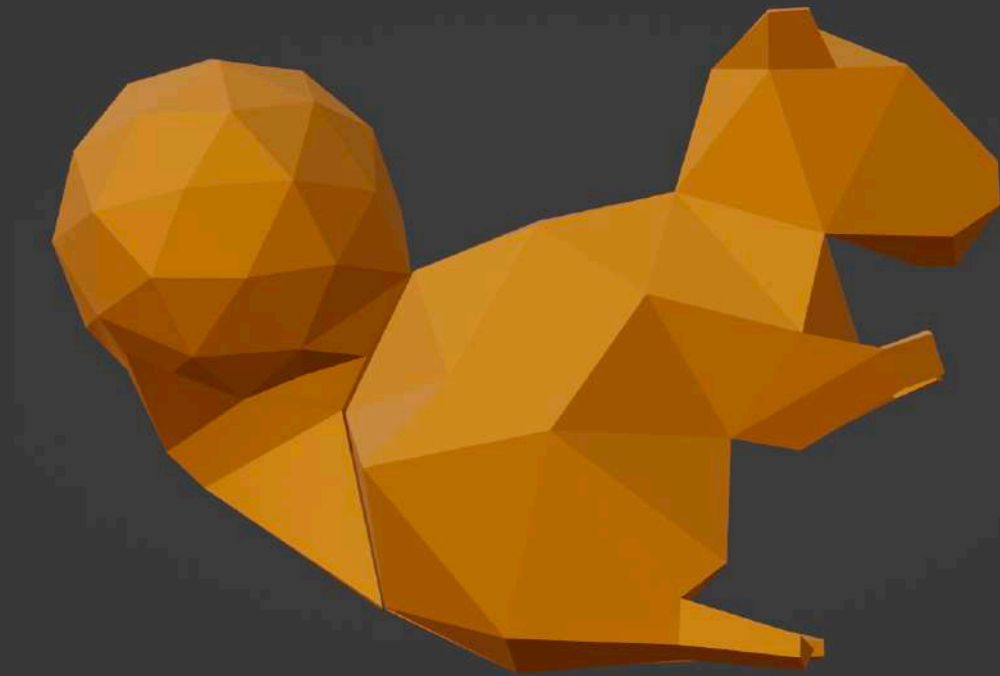
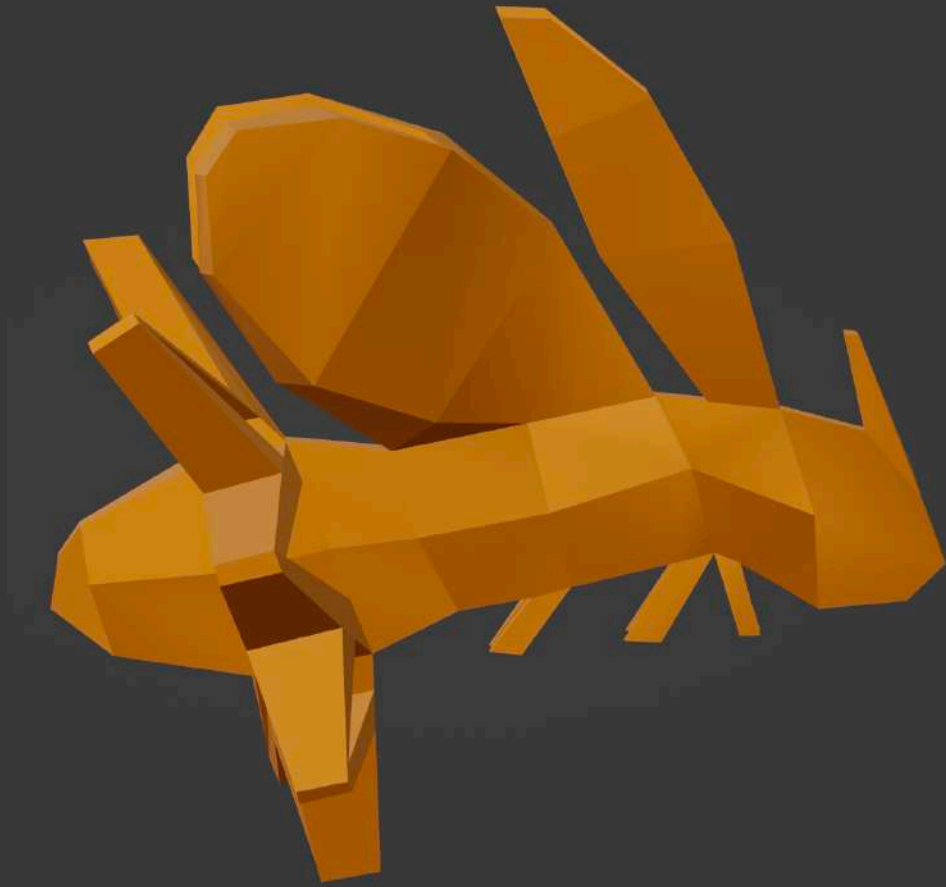
Options for uniform color across all four sculptures	Two options are provided in the below materials, 1) an option for four solid colors each to be used on one of the four sculptures, and 2) an option for one uniform color across all four sculptures.
A community letter of support related to the inclusion of Native American storytelling in the inspiration for the sculptural forms	This letter will be included in the correspondence for the September hearing.
Additional specifications relating to the safety of the sculpture's heights and locations.	<p>Additional slides have been provided with renderings showing each sculpture in situ. Only one sculpture will be sited on a raised pole. The pole will exceed five feet from ground level. Additionally, this sculpture will be in the center of a rain garden containing tall (four feet) plants which will mask the supporting pole as well as prevent an approach to the pole or sculpture.</p> <p>Please note that Sculpture C (squirrel) has changed location from the east side of the playground to the west side.</p> <p>Safety reviews on projects placed on City-owned property are the purview of the Department of Public Works and the Department of Permits, Licenses, and Inspections, as noted in the PACD Commission Manual. The Department of Public Works has reviewed this project and provided their approval on these matters via letter of support.</p>

## Additional Materials for September 2023 Review

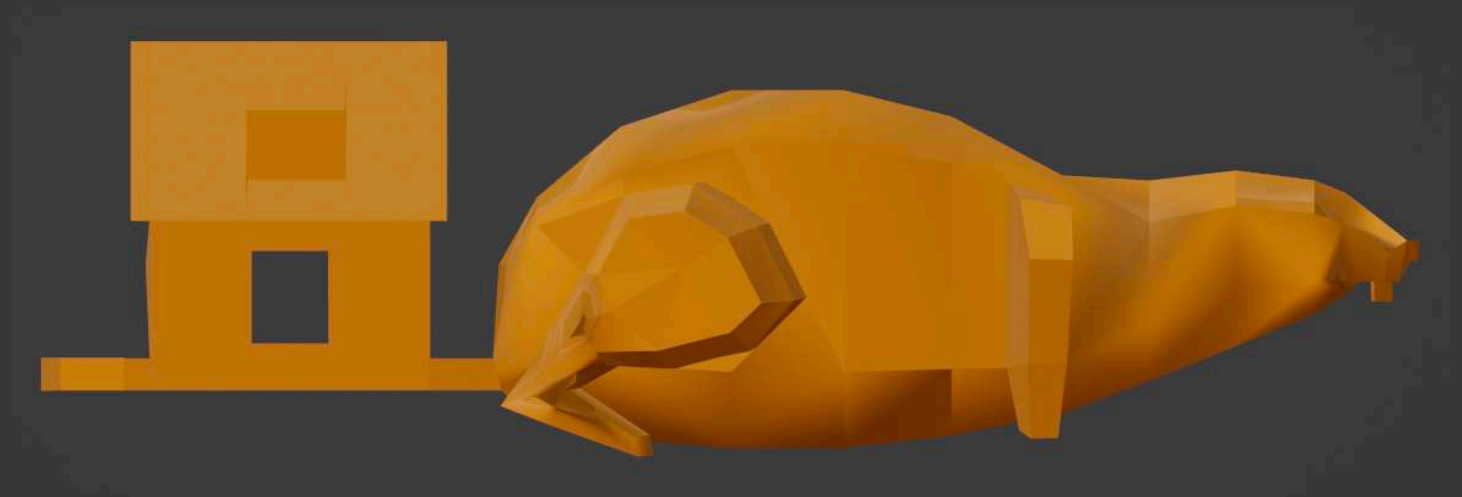


option 1 – independent colors for each sculpture



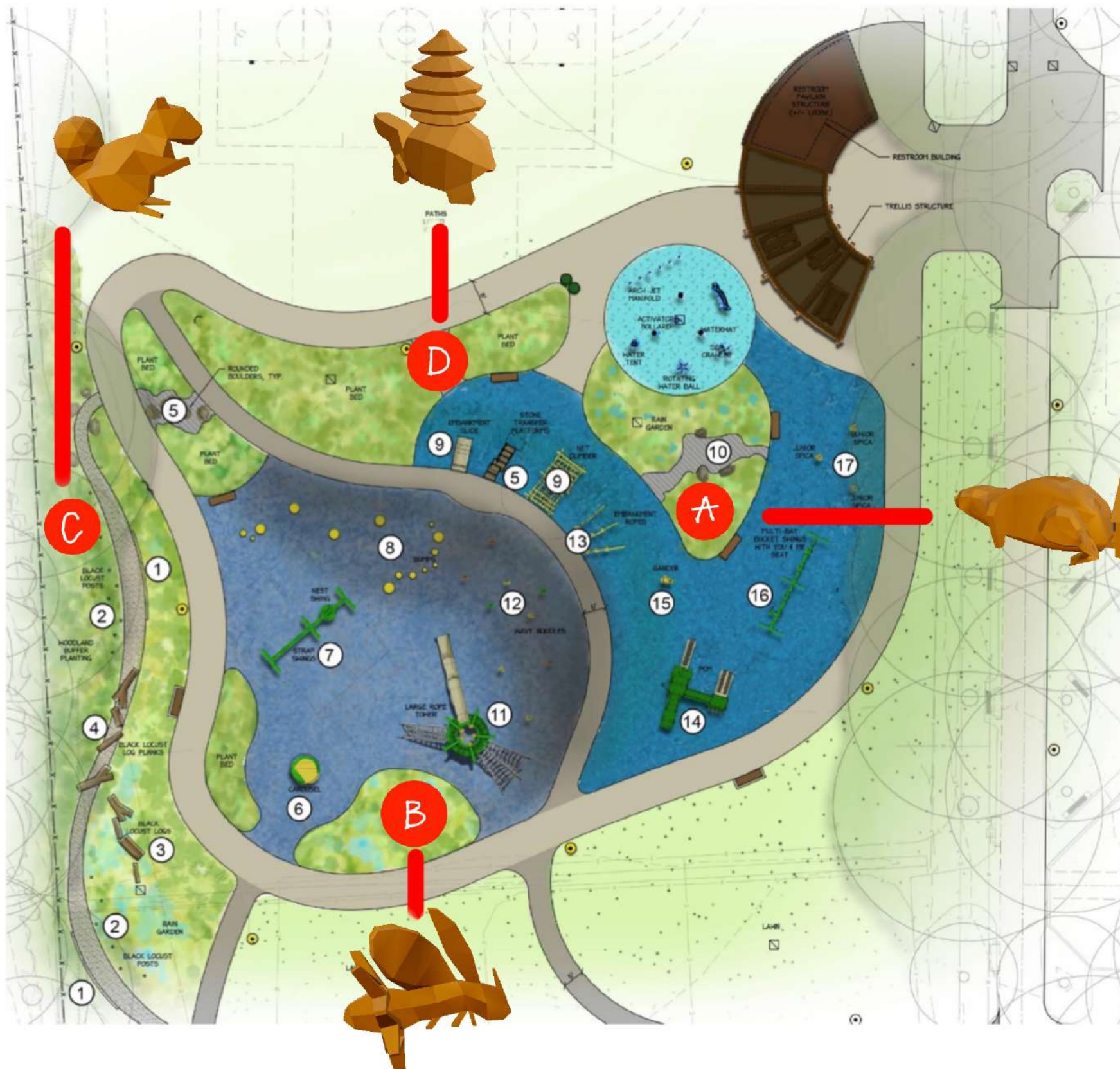


option 2 – same color for all sculptures





# FLOORPLAN OF LOCATIONS



A – Beaver on the ground

B – Firefly in the air in the rain garden (5ft above ground level)

C – Squirrel on the ground

D – Turtle on the ground





4 ft long x 2 ft wide x 2 ft height

Dimensions and colors are approximate and will be defined after the fabrication process, as closely as possible to the proposal.

This is a photo render, not a real picture.



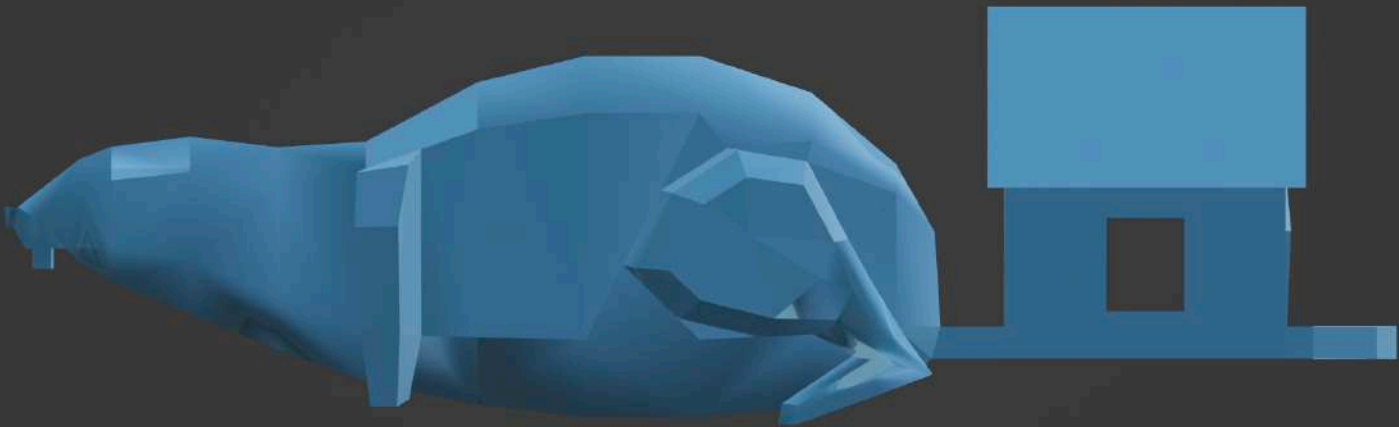
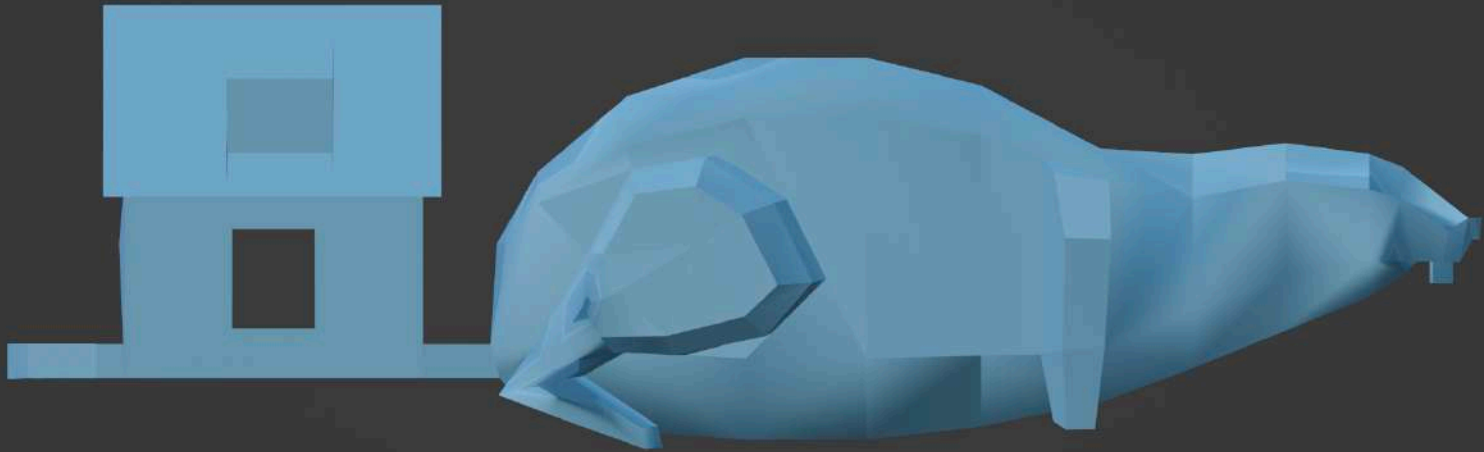


4 ft long x 2 ft wide x 2 ft height

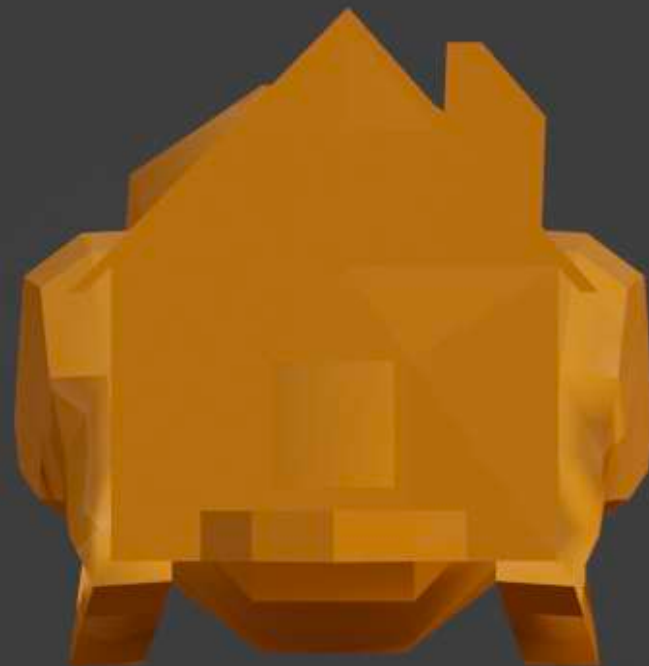
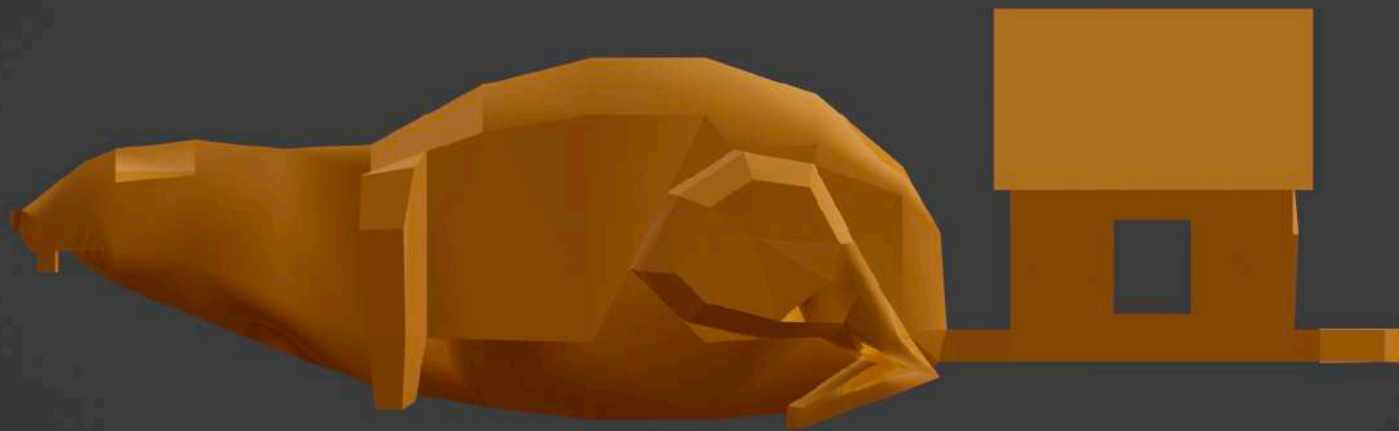
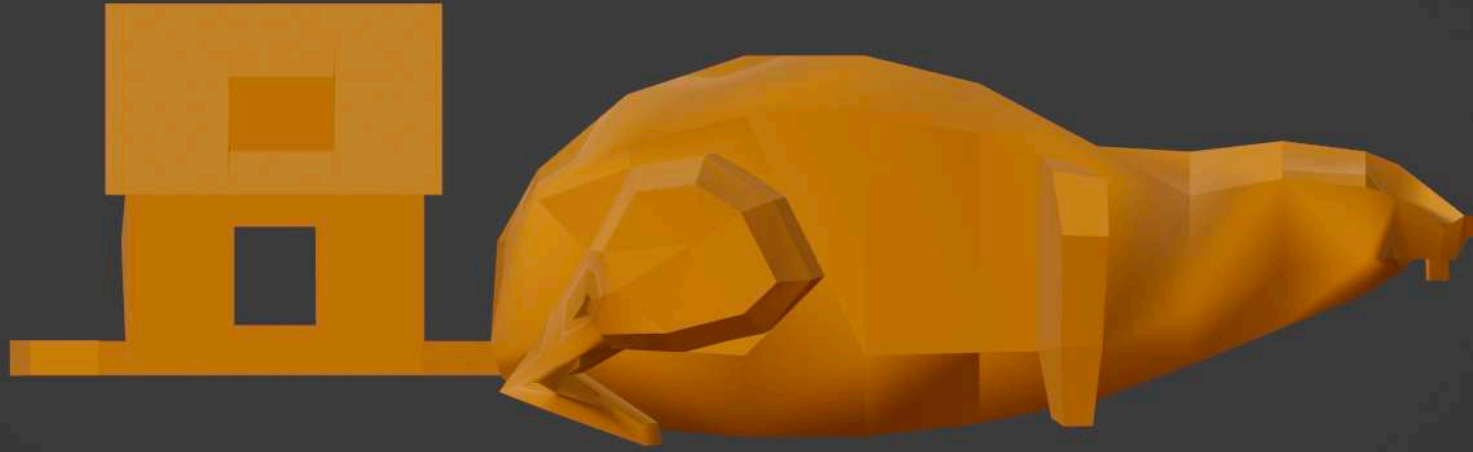
Dimensions and colors are approximate and will be defined after the fabrication process, as closely as possible to the proposal.

This is a photo render, not a real picture.













3 ft long x 2 ft wide x 3 ft height

Dimensions and colors are approximate and will be defined after the fabrication process, as closely as possible to the proposal.

This is a photo render, not a real picture.



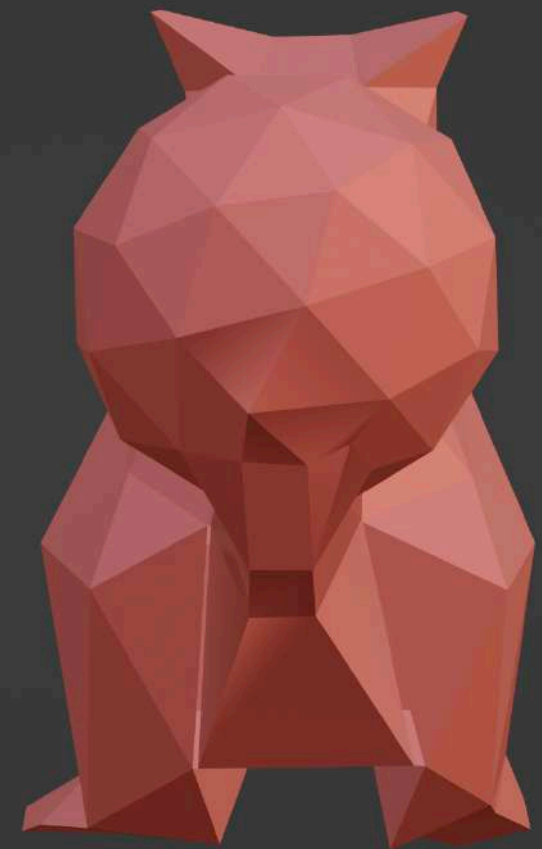
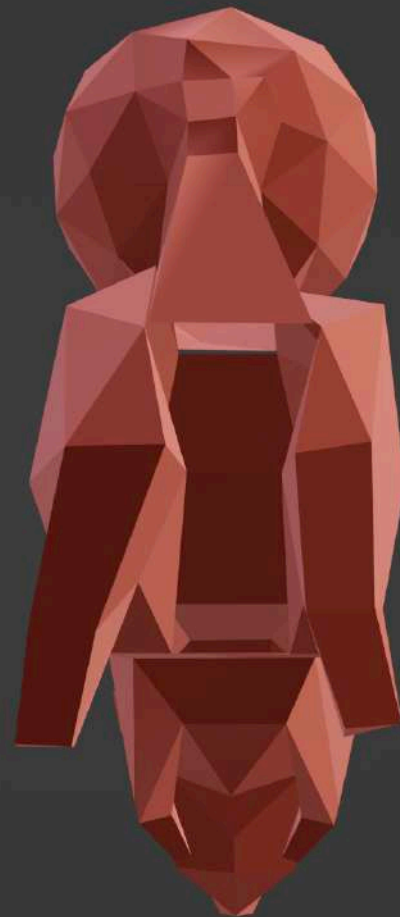
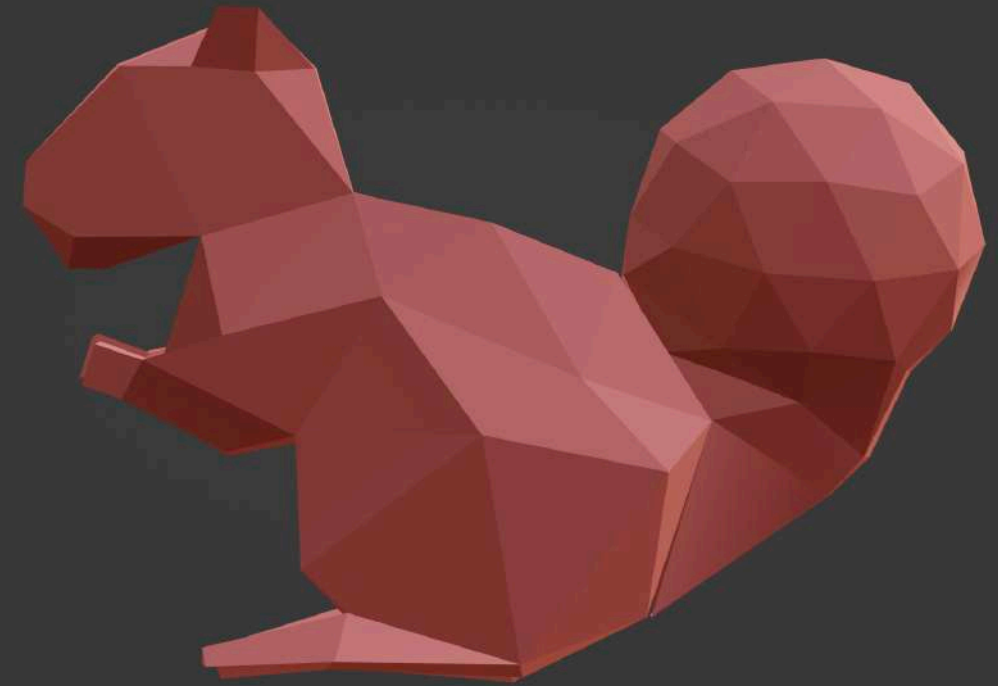
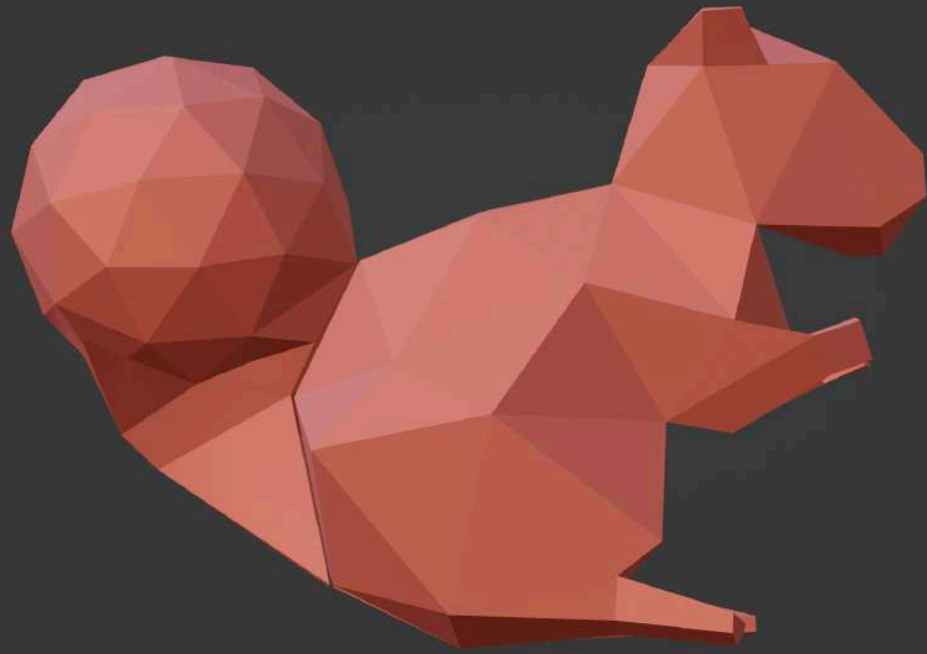


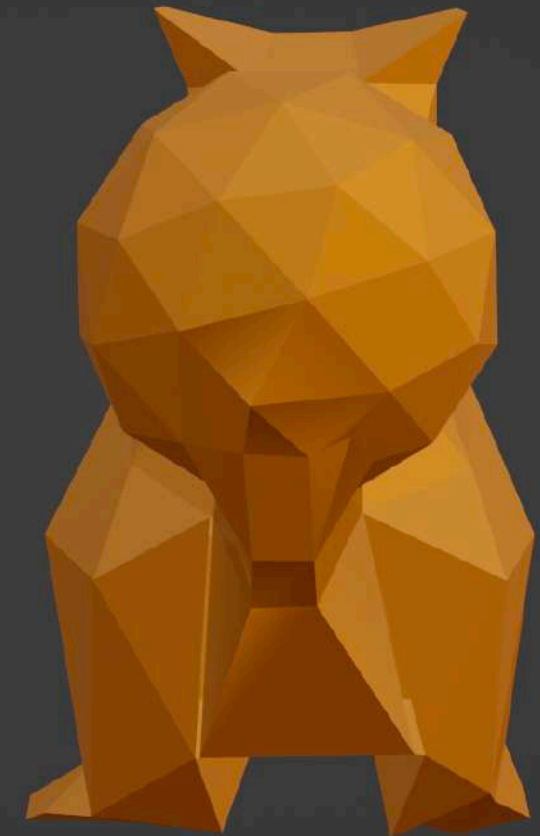
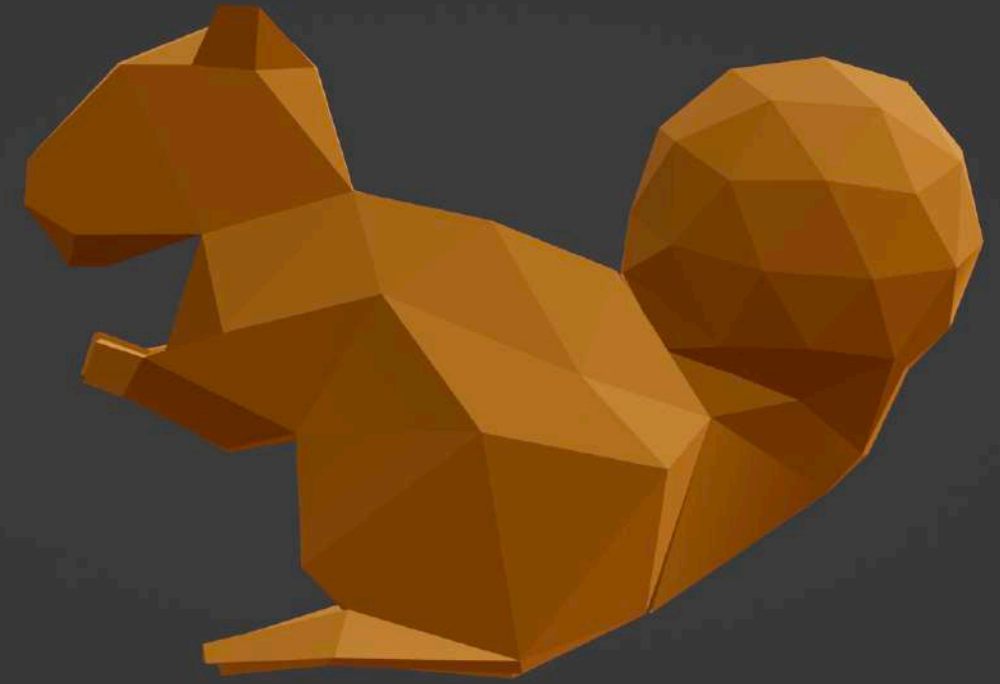
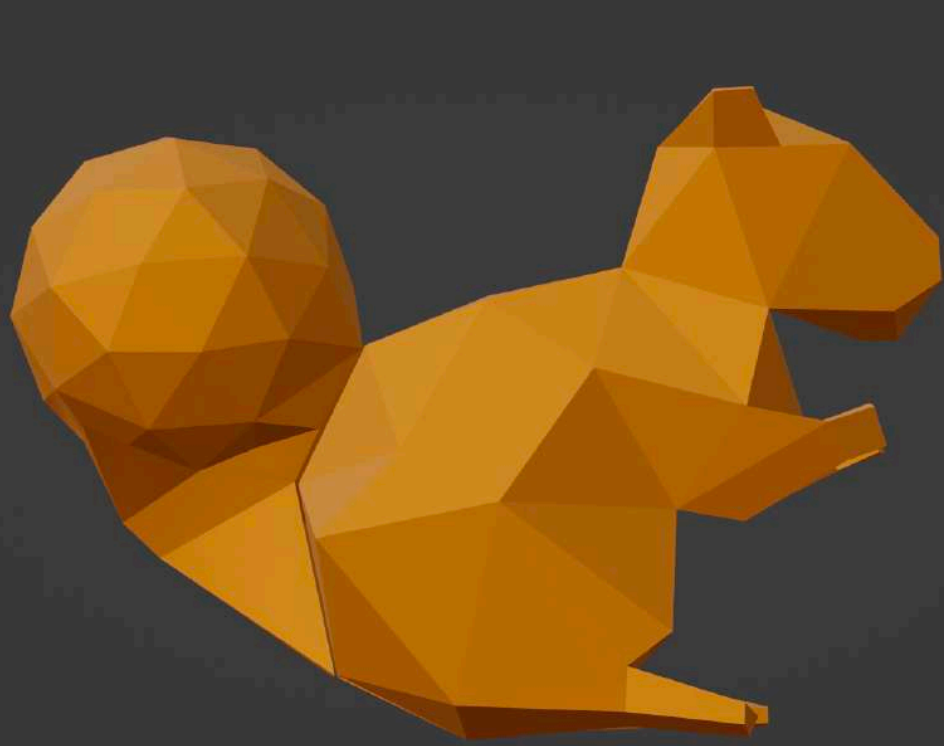
3 ft long x 2 ft wide x 3 ft height

Dimensions and colors are approximate and will be defined after the fabrication process, as closely as possible to the proposal.

This is a photo render, not a real picture.









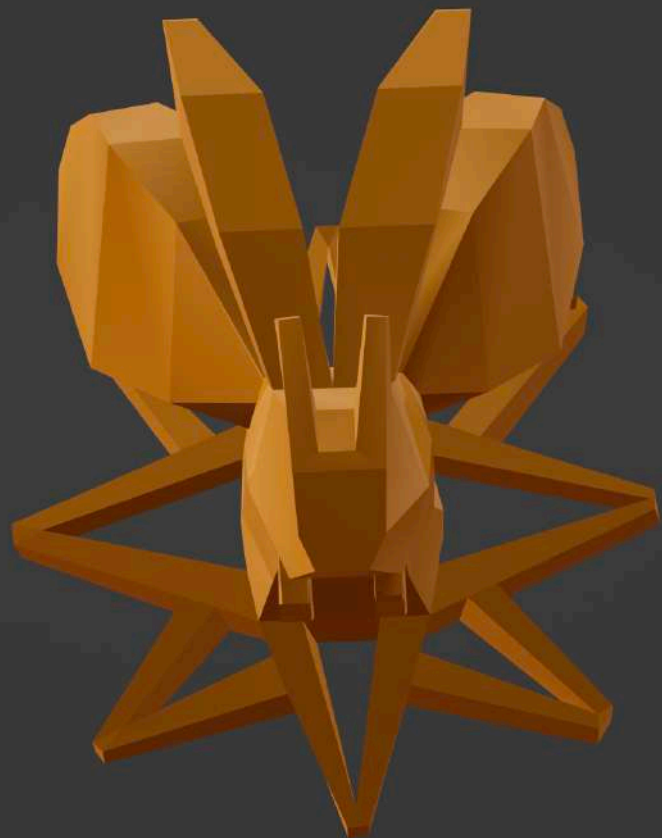
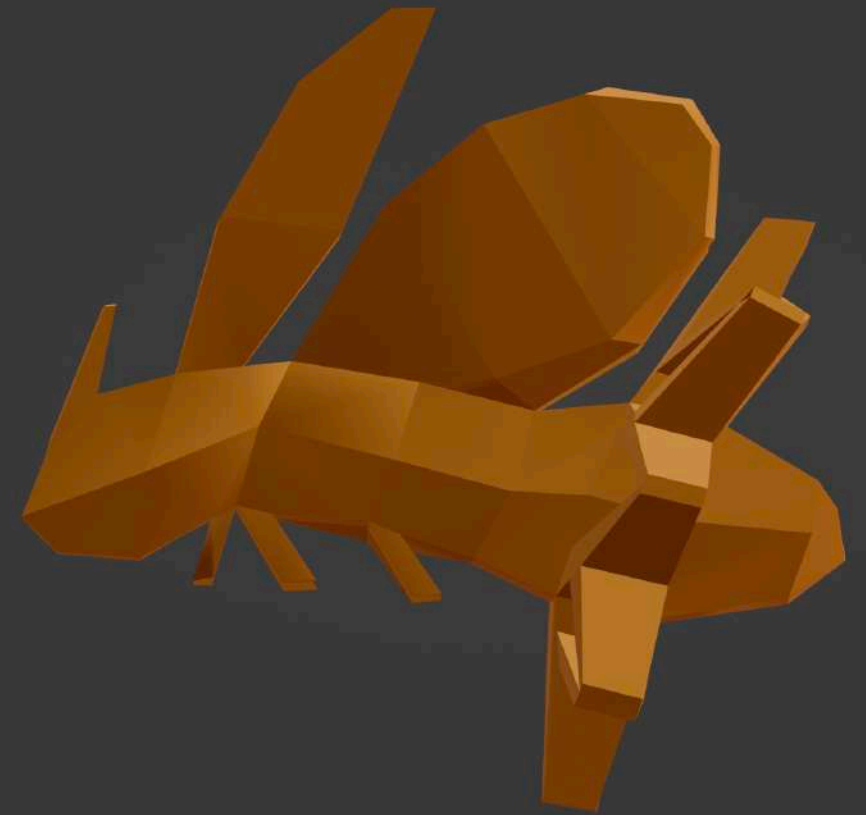
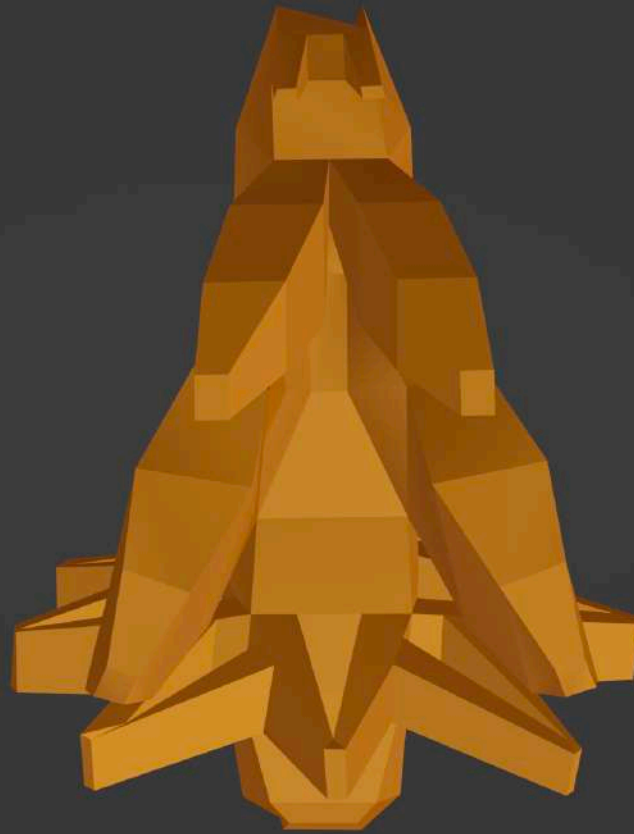
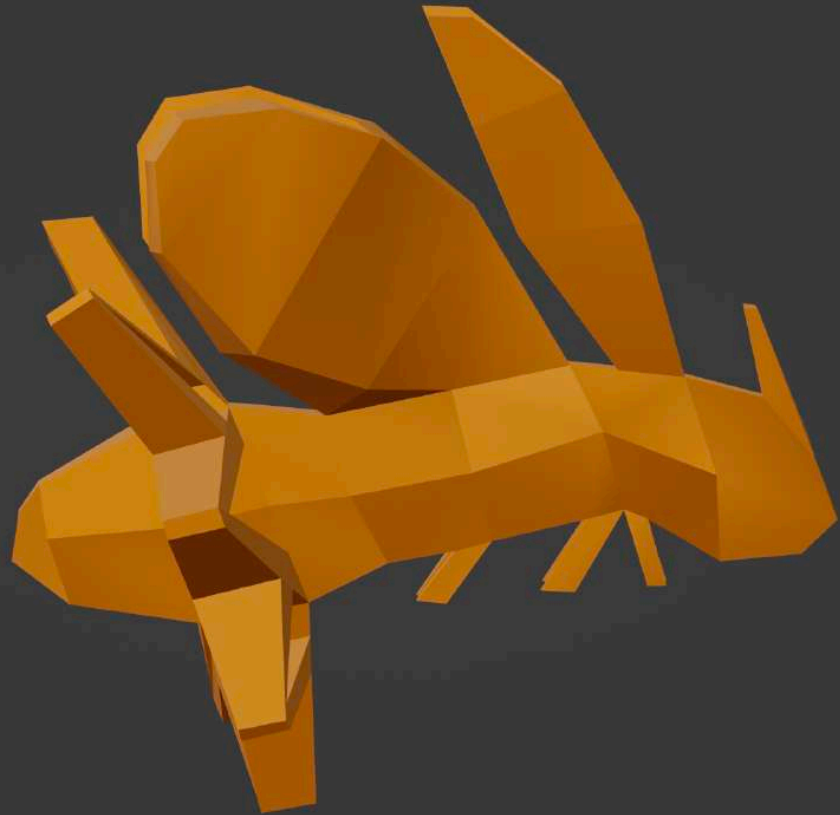


4 ft long x 2 ft wide x 2 ft height

Dimensions and colors are approximate and will be defined after the fabrication process, as closely as possible to the proposal.

This is a photo render, not a real picture.









3 ft long x 2 ft wide x 3 ft height

Dimensions and colors are approximate and will be defined after the fabrication process, as closely as possible to the proposal.

This is a photo render, not a real picture.



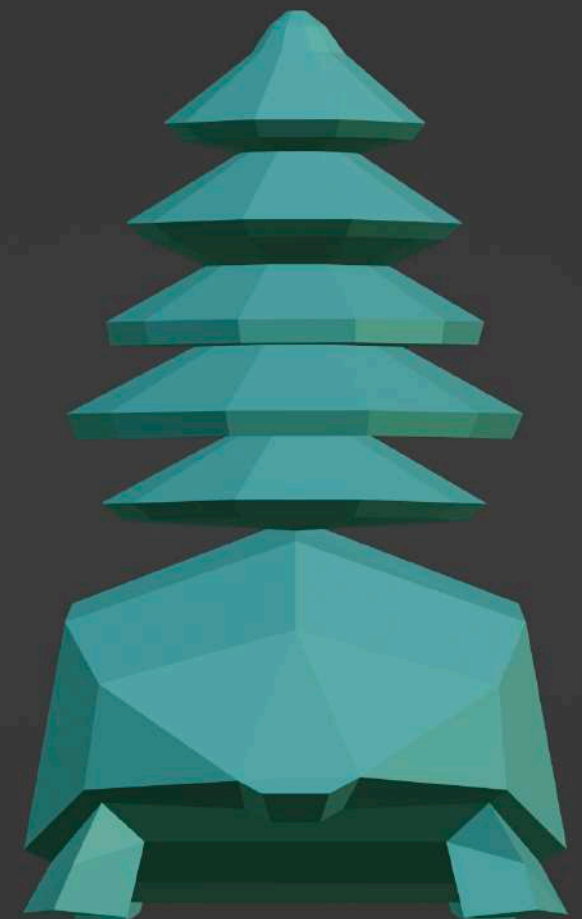
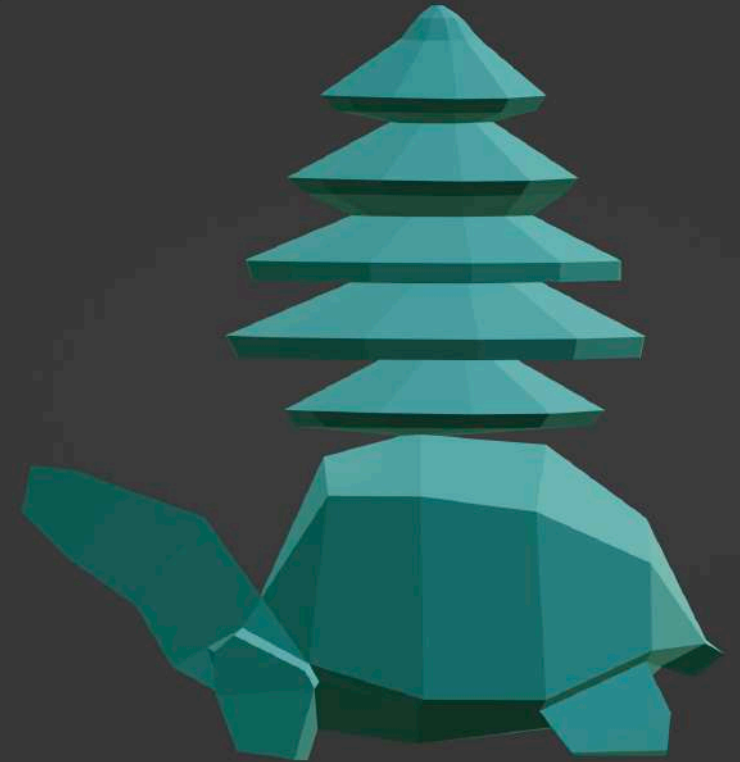
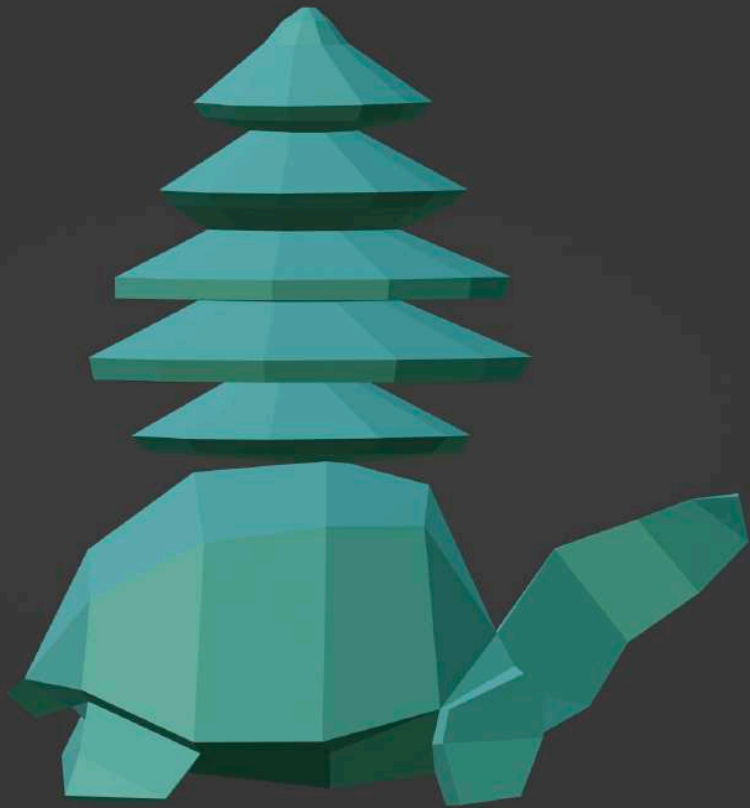


3 ft long x 2 ft wide x 3 ft height

Dimensions and colors are approximate and will be defined after the fabrication process, as closely as possible to the proposal.

This is a photo render, not a real picture.







Full Application Materials (August 2023 Review)

# Fusion Trail

Community-based art  
trail

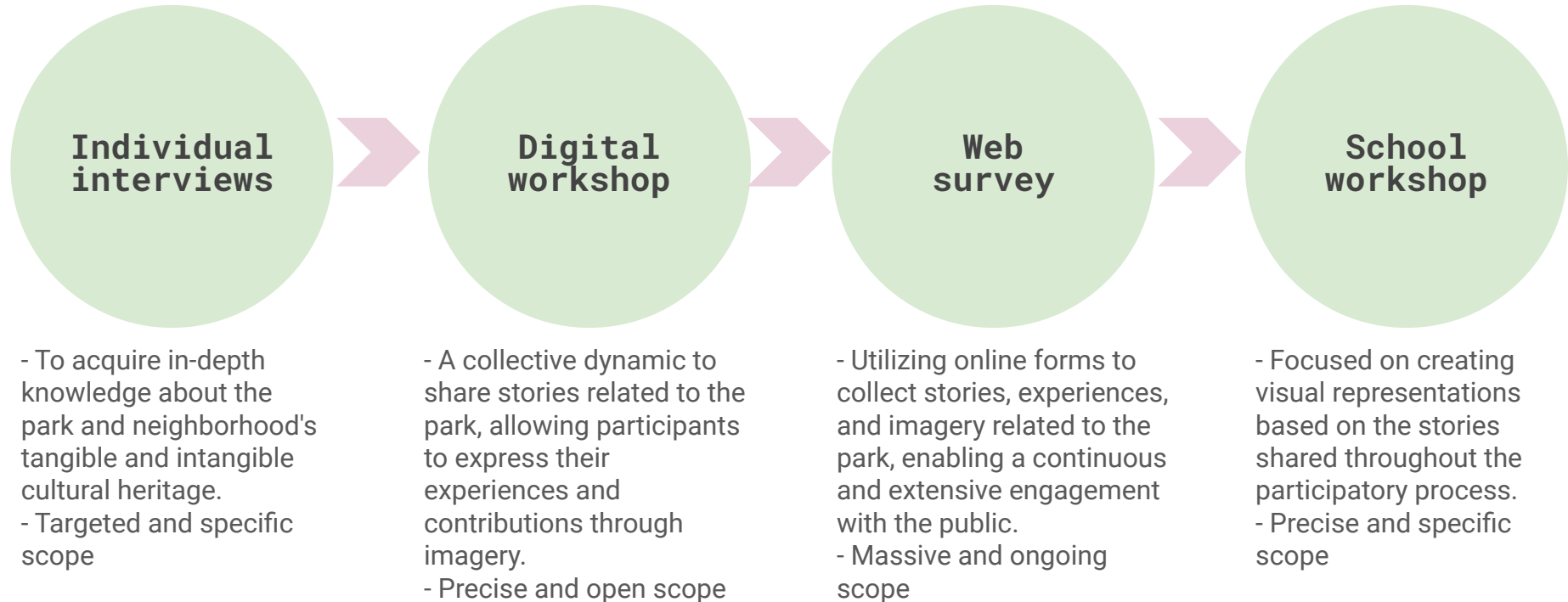
Arsenal Park

Sasha Reisin &  
Urbanismo Vivo

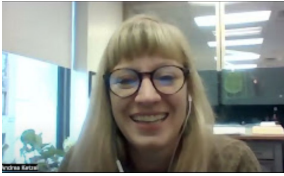


# Participatory process - timeline

The objective of the participatory process is to gather sensitive information about the social and physical heritage existing in Arsenal Park, its surroundings, and Lawrenceville. This information aims to enrich and facilitate the design process for the art pieces.



# Participatory process - INDIVIDUAL INTERVIEWS



Andrea Ketzel - City of Pittsburgh



Caitlin Bruce - HCUAP (Hemispheric



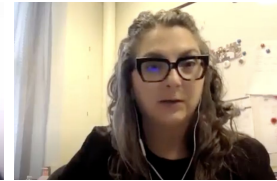
Dave Breingan - Lawrenceville United



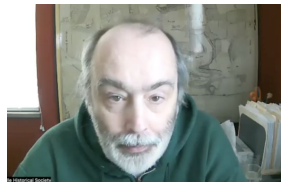
Evan Rumble - artist + ex-profesor in Arsenal School



Miguel Sague - COTRAIC (Council of Three Rivers American Indian Center )



Nina Unitas - Director for art & design at PPS



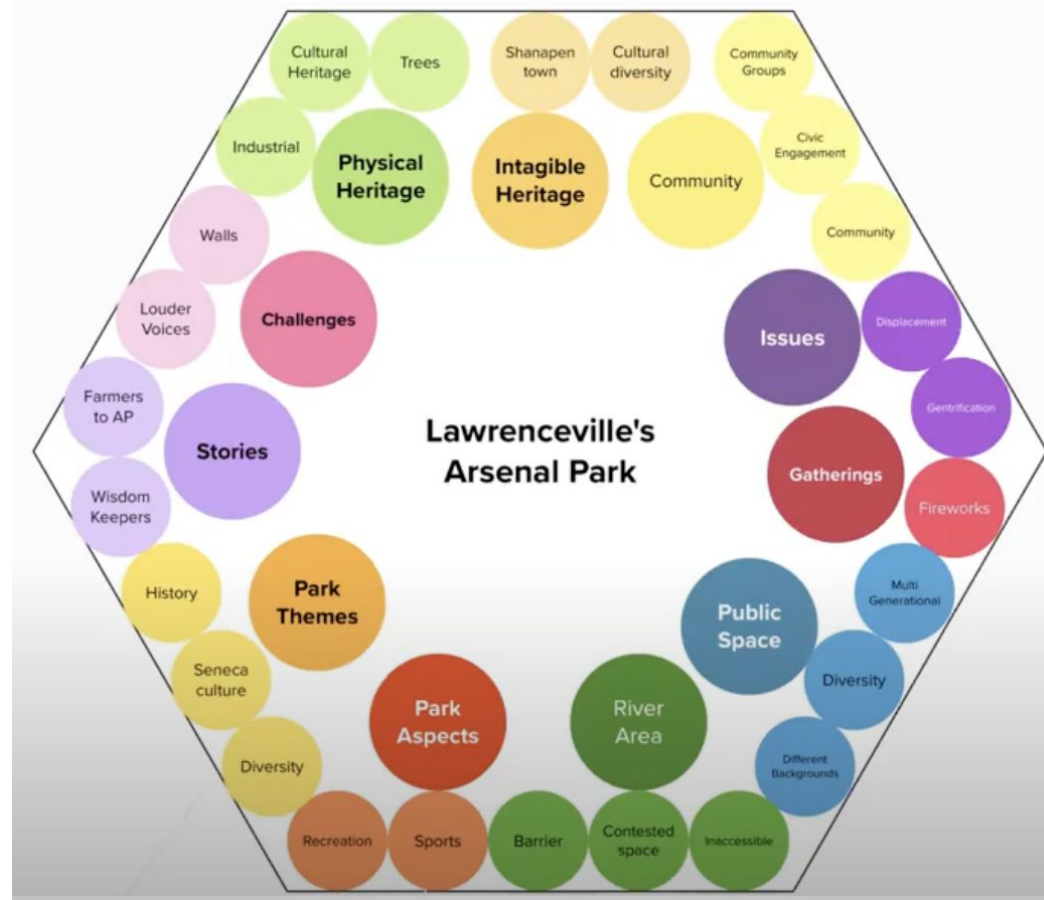
Tom Powers - Lawrenceville Historical Society



Oreen Coheen - HCUAP y artist



Emily Persico - Lawrenceville Corporation





# Participatory process - DIGITAL WORKSHOP





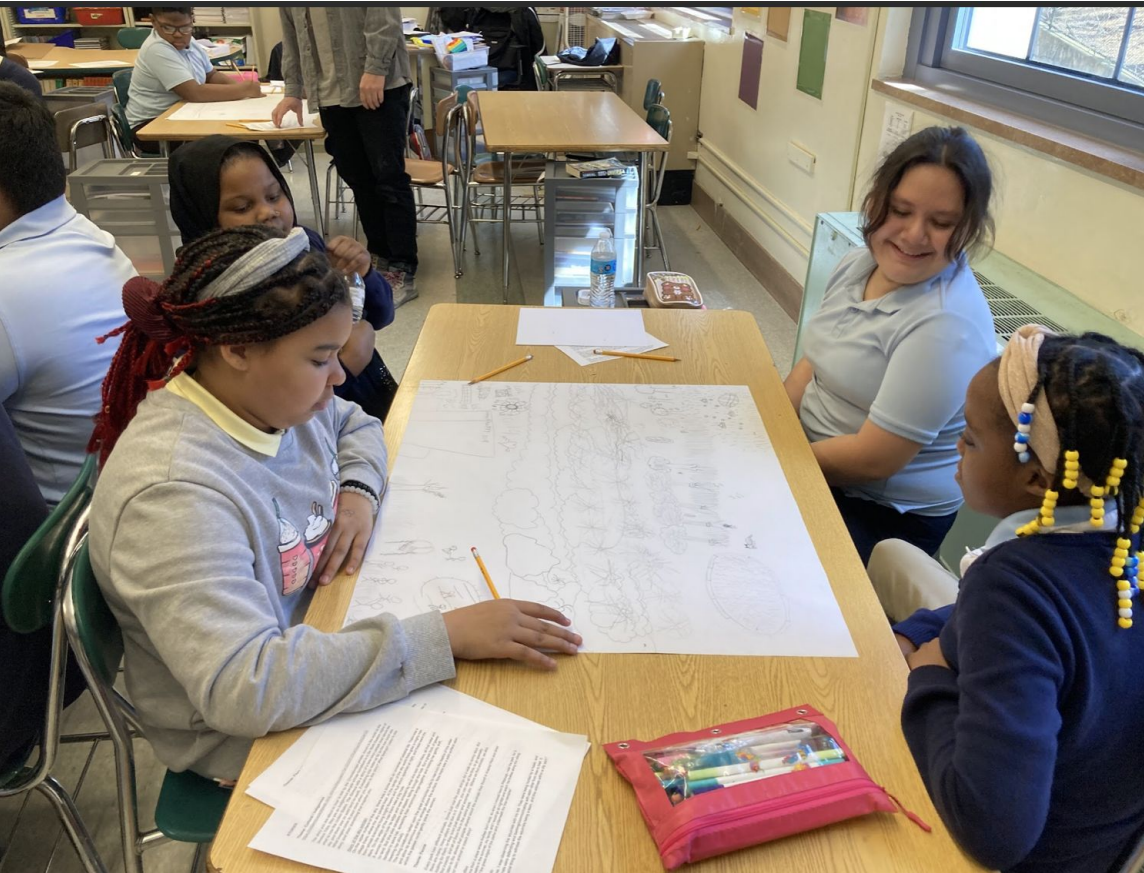
## A drawing of two stylized trees with green foliage and brown trunks, with a small red flower-like shape in the center. The trees are drawn with thick brown outlines and filled with brown cross-hatching. The foliage is represented by green scribbles. In the center, there is a small red flower-like shape with a central dot and radiating lines. The background is a light, textured surface.



Angel of Kindness  
To Spread To All Below Just  
Kind-Kind-Kind-Kind-Kind-Kind

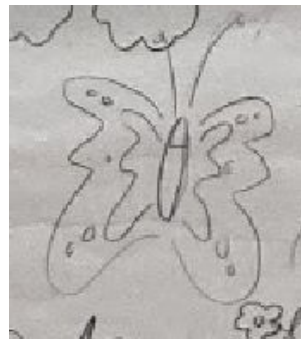
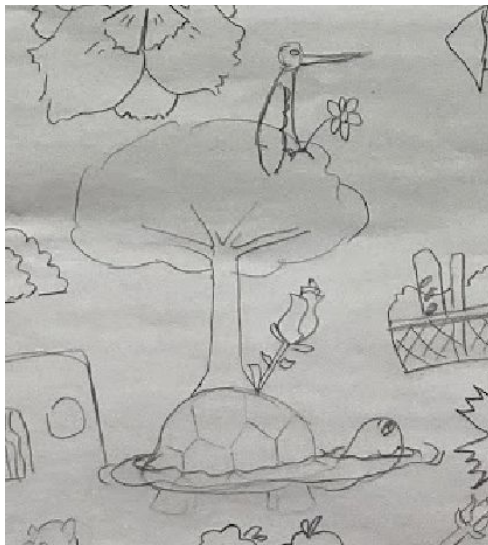
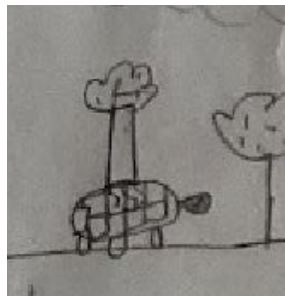
I WAS 13 YRS. OLD ICE SKATING ON POND.  
I HAD JUST RECEIVED A M. RADIO FOR  
XMAS. LEANED MY RADIO AGAINST THE  
CF BELIEVES THE TREE WAS STILL THERE. PACKING  
UP TO LEAVE. RADIO GOES FIRST TIME AND  
A BAD GUT FEELING.

# Participatory process - SCHOOL WORKSHOP

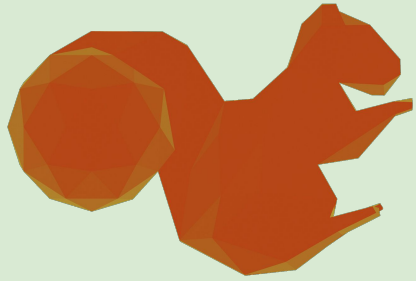




# Children's drawings (inspiration)



# animal sculptures that integrate community stories



history



migration

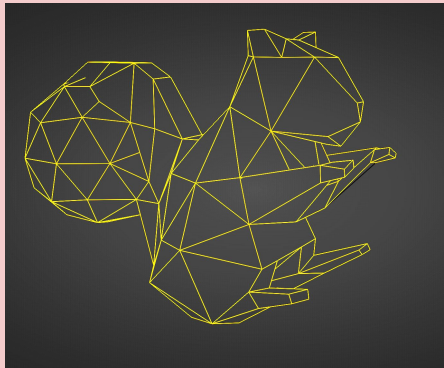


indigenous  
culture

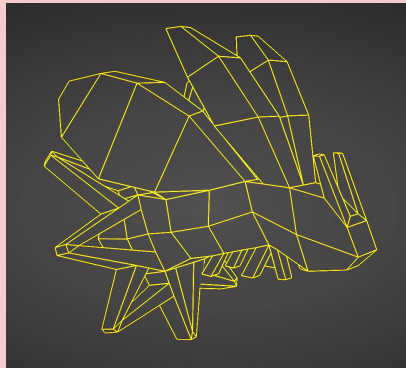


resilience

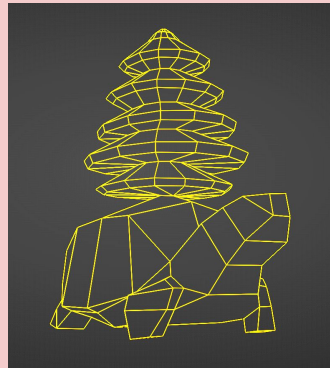
# four elements of nature



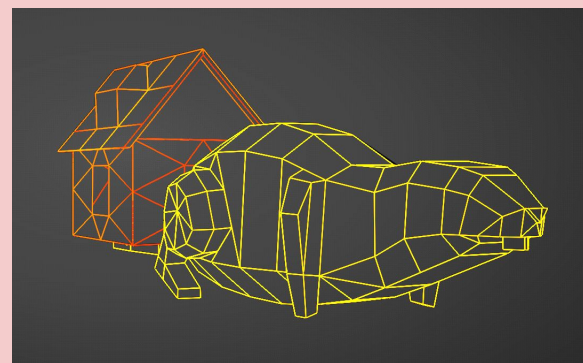
fire



air



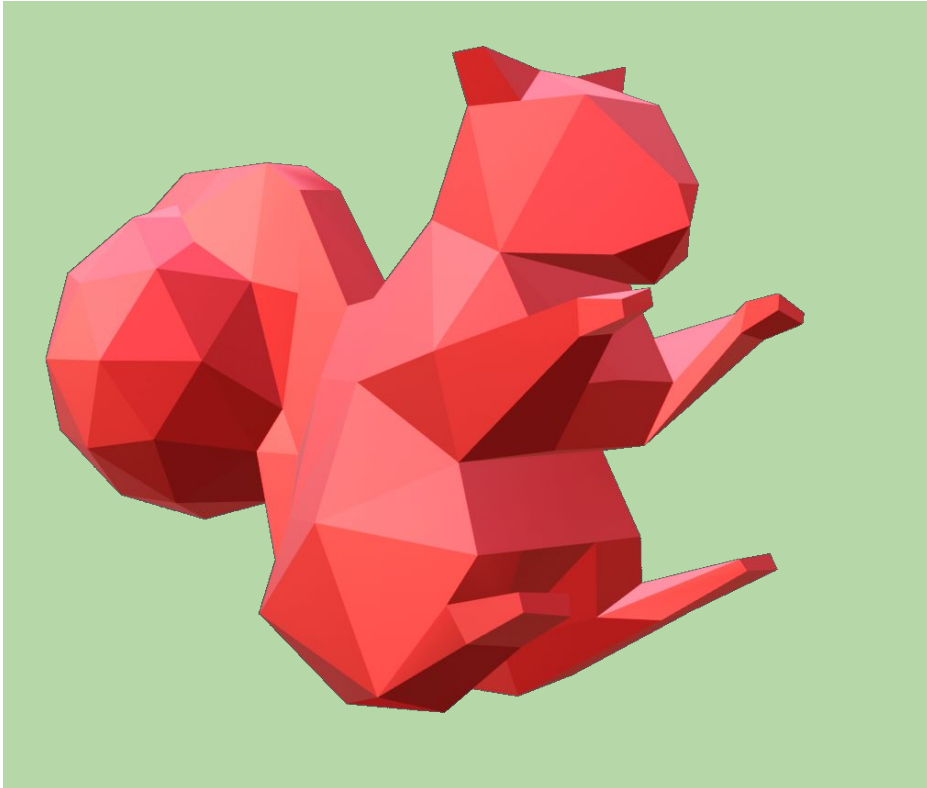
earth



water

# SQUIRREL

History / Fire element



Sasha Reisin & Urbanismo Vivo - Arsenal Park

# SQUIRREL

In the heart of the park, a common creature thrives, captivating visitors with its unique agility and swift movements. This delightful animal, the squirrel, not only brings joy through its friendly interactions with humans but also holds a profound symbolic meaning. Across cultures, squirrels are revered as symbols of resourcefulness, energy, and playfulness, embodying the connection between different elements of the natural world.

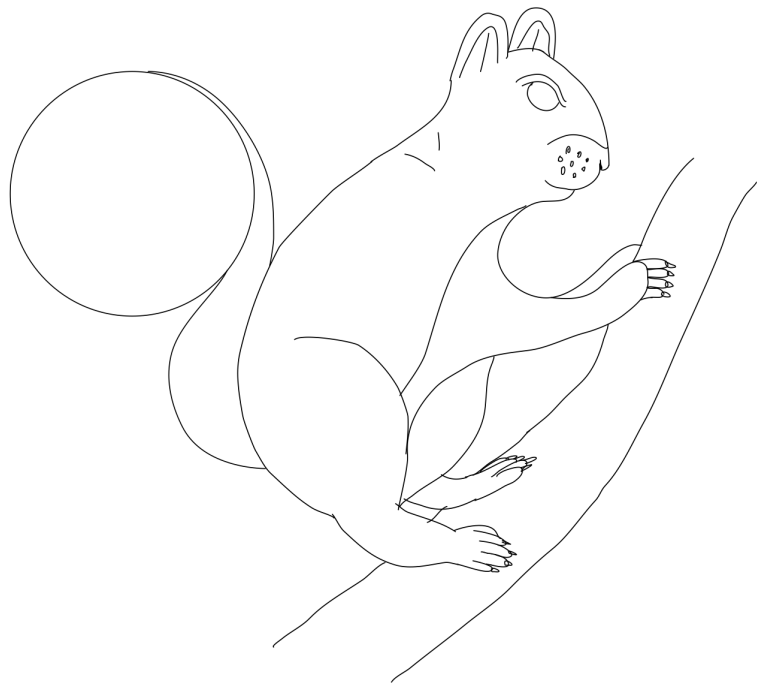
## HISTORY

### FIREWORKS/ARSENAL

The 4th of July fireworks, a beloved tradition in the park, illuminate the sky with joyous light. They create a sense of community and family bonding, while also honoring the park's rich history. Through the fireworks, we commemorate Arsenal's past and celebrate the park's vibrant heritage, embodied in its iconic buildings and monuments.

# SQUIRREL

History / Fire element



## COMMUNITY QUOTES

### SQUIRREL

“One time, I was observing the squirrels with my kid. They were being hunted by a hawk, and the squirrels were defending and barking/communicating with each other from tree to tree. It was a special thing to witness the squirrels being a team, and this wildness within a city park.”

### HISTORY: FIREWORKS/ARSENAL

“Being a new resident, I was very amazed by the July 4th fireworks event at the park on that first visit in 2014. The fireworks were SO CLOSE to everyone, and folks were scattered all throughout the park, laying on the grass, sitting on benches, standing in the tennis courts, just to see the fireworks and be with the community.”

“As they started digging, they found some relics of when it was an Arsenal, cannonballs were found in the area, and then I started thinking: what if the walls were the tops of a buried city. I drew a city that is still underground and you can only see the little tops of the walls, and the cannonballs are like the stars. I drew a tree, and its roots wrap around the city, so the trees are growing on the walls.”

# TREE TURTLE

Indigenous Cultures / Earth element



# TURTLE

Carrying a rich symbolic history in many indigenous cultures, the turtle holds profound significance. In the Seneca "story of the sky woman," it becomes a powerful link between the sky and the earth, embodying ancestral traditions and meanings that are often overlooked. Its slow and steady movements symbolize patience, resilience, and longevity, reminding us of the wisdom found in taking life's journey one step at a time.

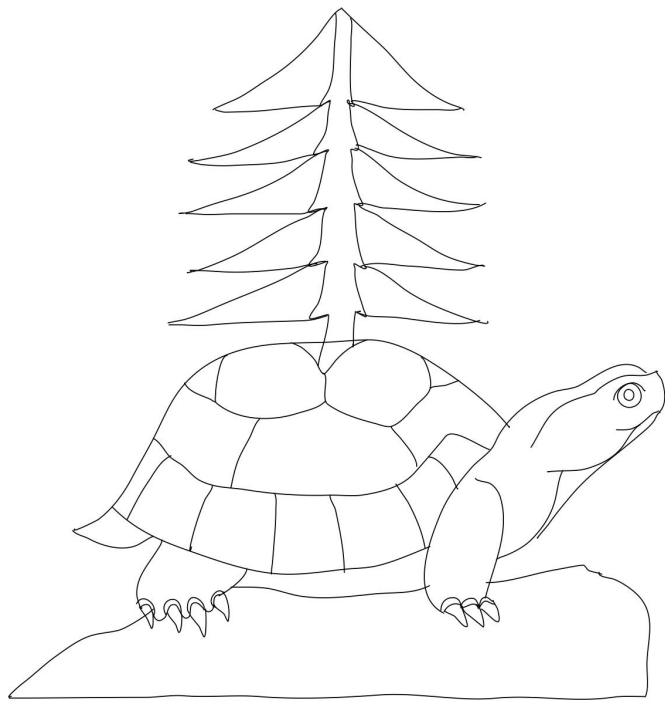
## INDIGENOUS CULTURES

Trees not only symbolize the connection between the sky and the earth but also represent a source of life and shelter for many animals that inhabit the park. As such, they are an integral part of the natural environment and help to sustain the delicate balance of the ecosystem. Trees have a direct connection to "Story of the Sky Woman" and this image emerged frequently in a workshop held at Arsenal Elementary School.



# TREE TURTLE

Indigenous Culture / Earth element



Sasha Reisin & Urbanismo Vivo - Arsenal Park

## COMMUNITY QUOTES

### TURTLE

#### Story of the sky woman

On the upper surface of the sky, there was a dome with an universe of celestial life. There was a village there, where the sky people lived. At the center of the sky world there grew a mighty tree, from whose branches hung bright flowers and fruit which sparkled at night, and these were the stars. On the edge of the tree there was a big hole.

A woman leaned over its edge and was amazed by what she saw down there, all that water and no land. But she was careless and slipped, falling through the hole. But a great flock of geese decided to save her, spreading their enormous wings together and holding her gently aloft, lowering her slowly.

The living creatures called upon the great primordial turtle to rise from the depths of the water and allow its enormous shell to emerge above the surface. Now there was a solid surface upon which the geese could gently place the woman.

### INDIGENOUS CULTURES

"There are some large, beautiful trees in the park. I am particularly fond of the large bald cypress near the "Arsenal Park" sign at the flagpole entrance. When it sheds its leaves in the fall, it creates a carpet of orange on the ground. They often get stuck in my dog's beard on walks! I also love when the ginkgo trees turn yellow in the fall. Near the playground is a series of katsura trees that smell like cotton candy in late summer as they emit sugars. It's lovely to experience the seasonality of the park."

# FIREFLY

Cultural Diversity / Air element



# FIREFLIES

Within the mysterious and hidden world of insects lies the firefly, which plays a crucial role in the natural ecosystem of parks. Despite their small size and humble appearance, they captivate us in a unique and almost romantic way. Their flickering light in the darkness acts as a mysterious and enchanting signal.

In many ways, insects become a metaphor for the hidden stories of Lawrenceville. Like these tiny creatures, the stories may be initially difficult to see or understand, yet they reside, patiently waiting to be discovered and appreciated. They form a rich tapestry of experiences and cultures, intricately woven to shape the community over time—from migrations and settlements to the processes of development and growth.

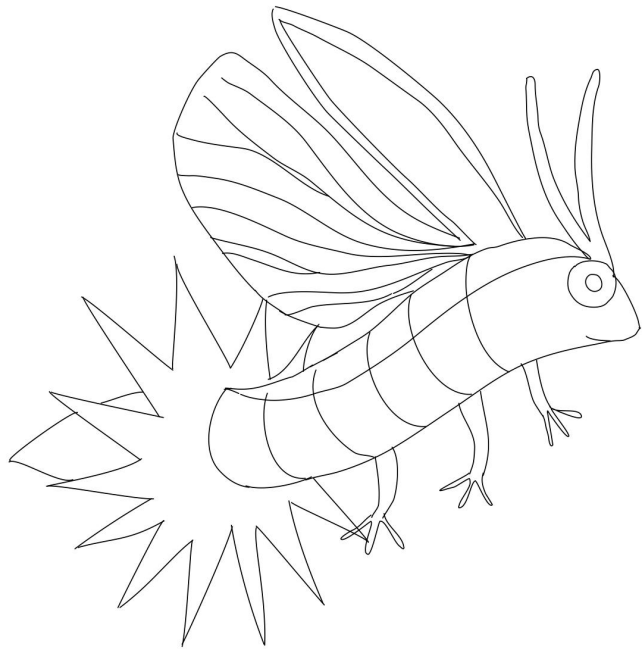
# MIGRATION

The flying luminescence serves as a reference to the inherent value placed on migration stories, symbolizing the transformative journey from one place to another that shapes our identities. It embodies the idea of mobility, showcasing the ability to adapt and flourish in new environments.

It becomes a captivating embodiment of the interconnectedness between self and environment, reminding us of the profound influence our surroundings have on our own luminosity.

# FIREFLY

Cultural Diversity / Air element



## COMMUNITY QUOTES

### FIREFLIES

"I come from a place where fireflies don't exist, so when I moved here to Pittsburgh, near the park, for a few weeks in the summer, my family and I would go at nightfall and watch the fireflies along the rolling hills of the grass edges of the parks and underneath the tree canopies"

### MIGRATION

"I have lived in Pittsburgh since 1997, moved from Erie, arrived there in 1961 from Cuba. My ancestors are Taíno, indigenous people from Cuba, so I inherited the cultural legacy of the Taíno. My culture was destroyed, now they are researching and they are active in recovering things that were lost, and reviving things that survived the layers of Colonialism.

A lot of indigenous people of the US are still very connected to their traditions, but some are not and experienced the same kind of destruction, and now they are reconstructing."

# BEAVER

Community / Water element



# BEAVER

The beaver is a transformative animal, thriving in both land and water environments. They are a keystone species, showcasing remarkable engineering skills: their dam construction creates wetland habitats, providing shelter and sustenance for various plant and animal species. In this region, it holds symbolic significance as a once abundant animal now facing extinction, reminding us of historical and ecological changes.

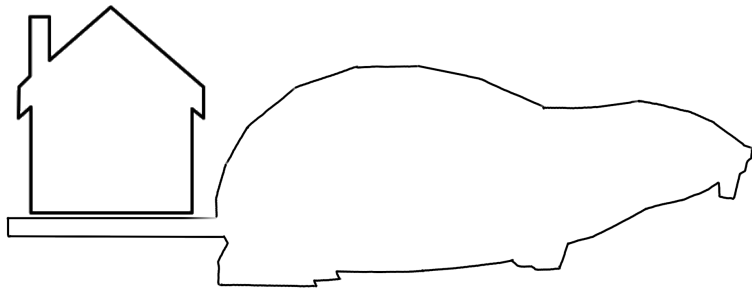
## HOUSES / HOMES

Houses are built, homes are made. Sometimes, these concepts seem to blend and spatially merge. When houses are filled with experiences and emotions, they turn into homes. As homes, they can travel, move and evolve over time.

We can also feel at home when sharing with people in our communities. We can shape our public spaces in our neighborhoods and cities by interacting with others. A home cannot be defined, it's felt. It is at the heart of every individual, family, and spreads across generations.

# BEAVER

Community / Water element



## COMMUNITY QUOTES

### BEAVER

Shanapen's Town, it was a indigenous people that called themselves the Lenapi, they were not from here, they were driven out from Eastern Pennsylvania by british colonists, they came into this área looking for refuge. The people that welcomed them were the people that controlled this region that were the Senecas. Not related by language, they were very alien. Interesting concept that people here, that used to be enemies, but there was that compassion and let them live here in peace and make Shanapen's Town.

One of the most important people, from the Lenapi, didn't live in Shanapen's Town but he came a lot. He had relatives here. His name was Beaver.

Beavers are extinct now, but at that moment there were a lot of beavers.

Pine tree: symbol of welcoming. The roots were a peace path: the white roots of peace "follow the roots to the core, to the trunk in peace, and we will welcome you to our region"

### WATER: POND

"As I grew up, the park was for kids, there was a playground, sport activities, it was a place to play games with children from a lot of different backgrounds. They had a pool where we went on hot days to enjoy the water. It isn't a very big pool, but in the winter time we went ice skating."

## INSTALLATION LOCATION

**SQUIRREL:** climbing a tree trunk

Wired to underground concrete base (not attached to tree)



ARSENAL PARK – PLAYGROUND CONCEPTUAL DESIGN



PASHEK MTR



## INSTALLATION LOCATION

TURTLE: floating on the ground

Wired to underground concrete base (not attached to tree)



ARSENAL PARK – PLAYGROUND CONCEPTUAL DESIGN



PASHEK MTR



## INSTALLATION LOCATION

**FIREFLY:** floating in between the trees

Wired to underground concrete base (not attached to tree)



ARSENAL PARK – PLAYGROUND CONCEPTUAL DESIGN



PASHEK MTR



## INSTALLATION LOCATION

BEAVER: floating on the ground

Wired to underground concrete base (not attached to tree)



ARSENAL PARK – PLAYGROUND CONCEPTUAL DESIGN



PASHEK MTR



# SIGNS

## QR CODES





# FABRICATION PROCESS



# MATERIAL, COATING & DURABILITY



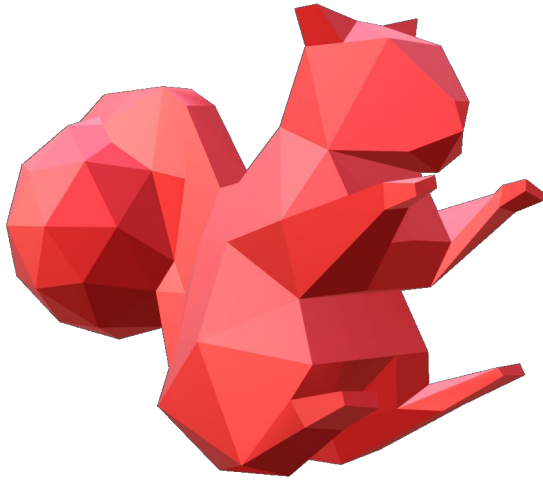
The artworks will be produced using 16-gauge **galvanized steel** (1.6mm), which will be folded and welded at certain points.

This metal thickness is strong enough to resist vandalism or manipulation, preventing people from bending them with their hands. As for weathering, the galvanized steel comes with a layer of **zinc coating**, making it greatly resistant to water corrosion. Zinc prevents water and oxygen reaching the steel beneath.

Each folding line will be partially die-cut to facilitate easier assembly of each shape. These **die-cut details** will also allow water to leak through, helping **prevent corrosion** by avoiding any accumulation of water in any part of the sculpture.

A final powder coat painting will give the artworks an aesthetic layer and further enhance **weathering resistance**.

# SAFETY > SOFT EDGES



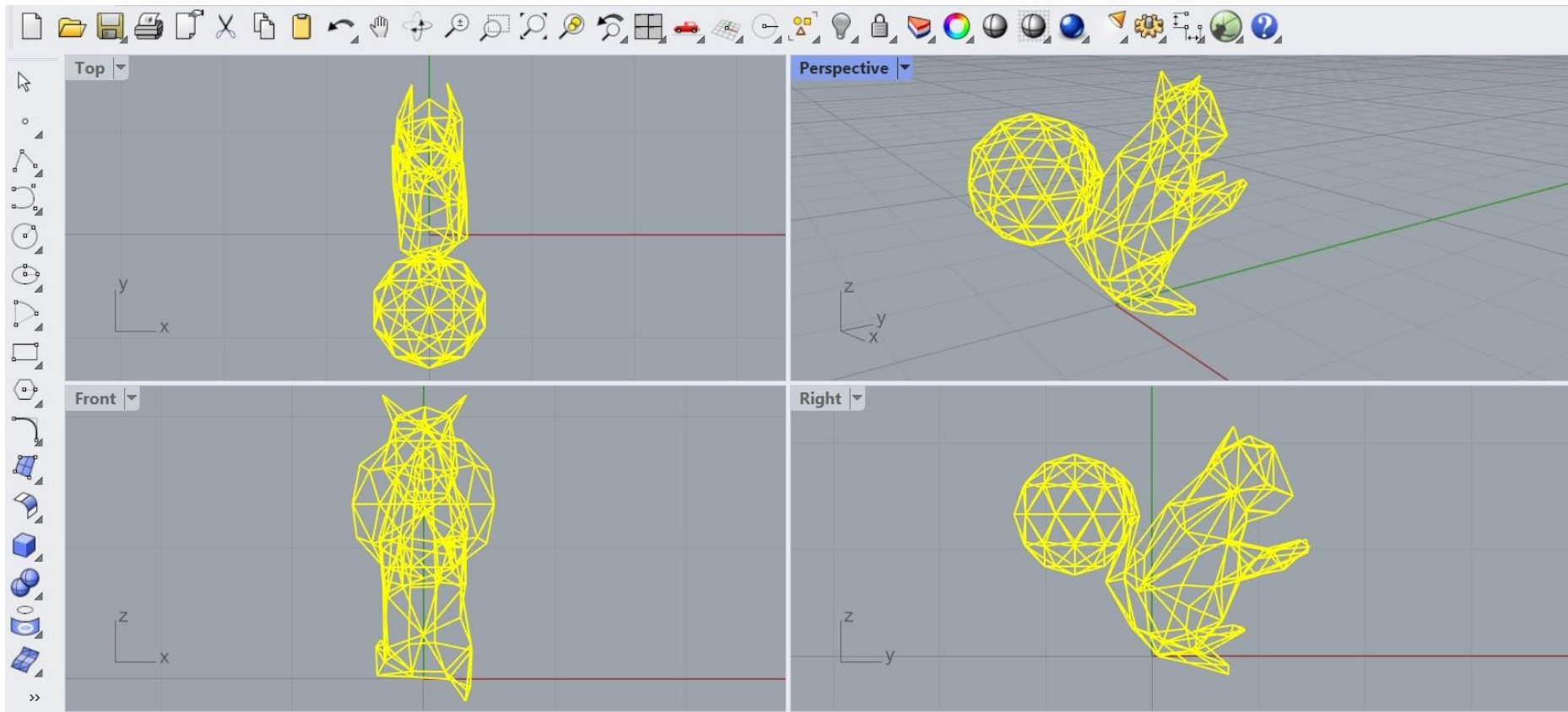
We prioritize special consideration in producing soft edges that ensure safety for everyone. We will make sure that there aren't pointy edges in order to minimize potential risks.

To achieve this, we avoid using angles that are less than 90° and, instead, opt for wider joint angles. Additionally, any sharp edges will be grinded to ensure a smooth finish, further enhancing safety.

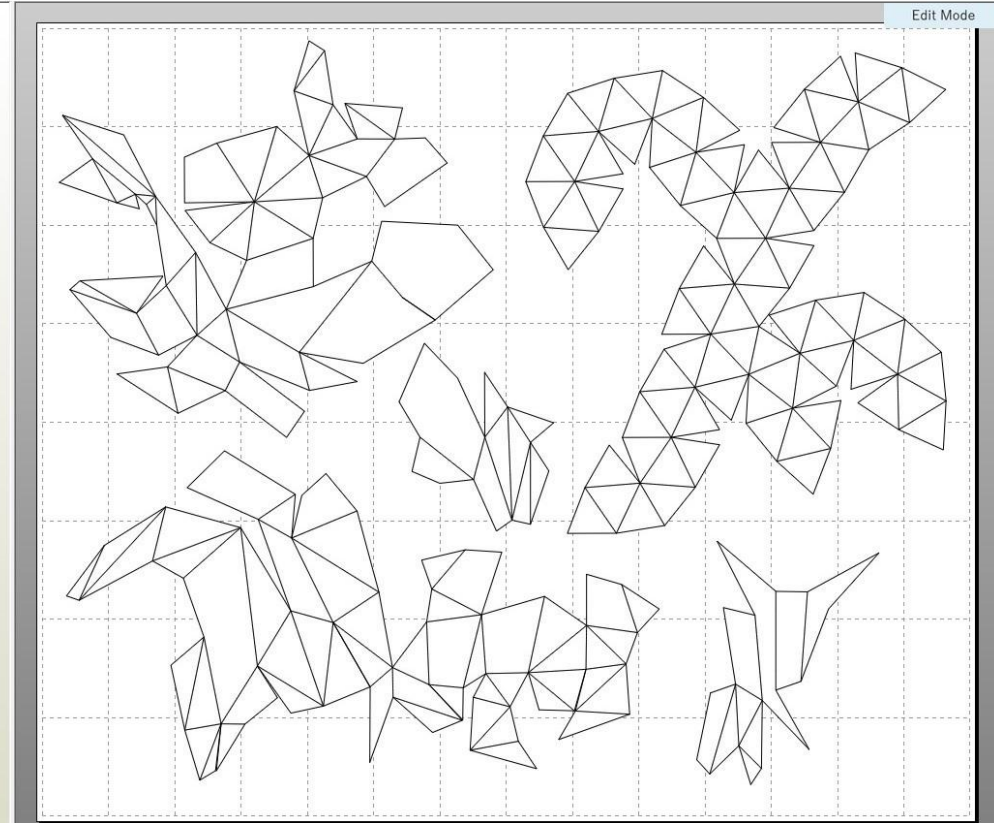
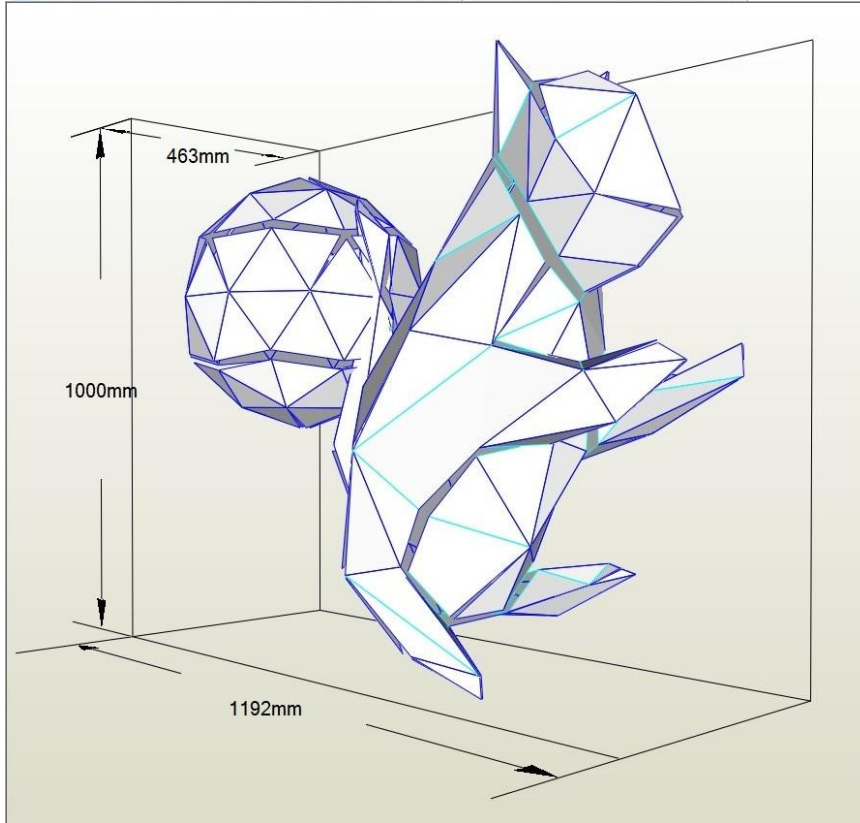


2d concept

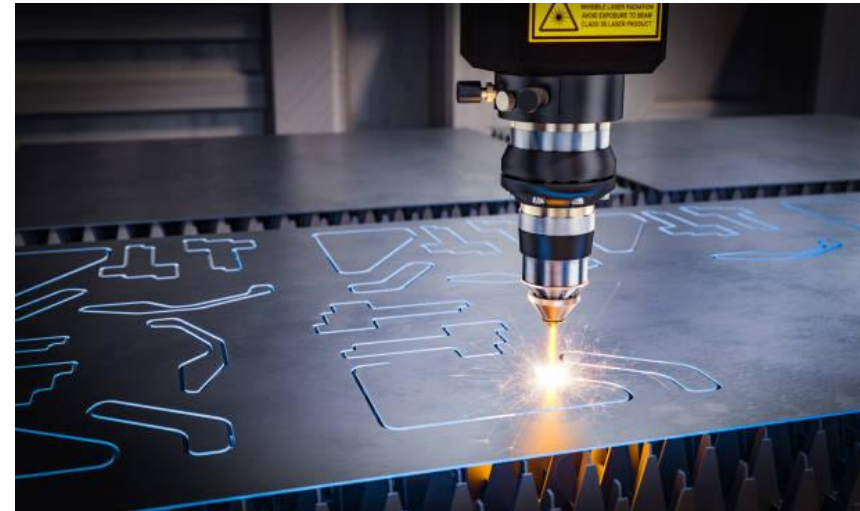
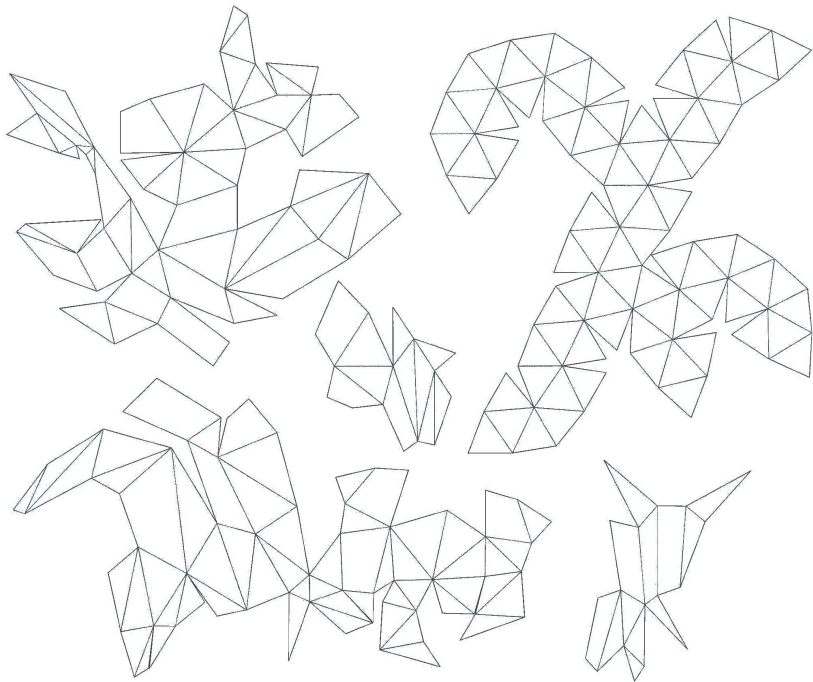




3d modelling in low res polygons

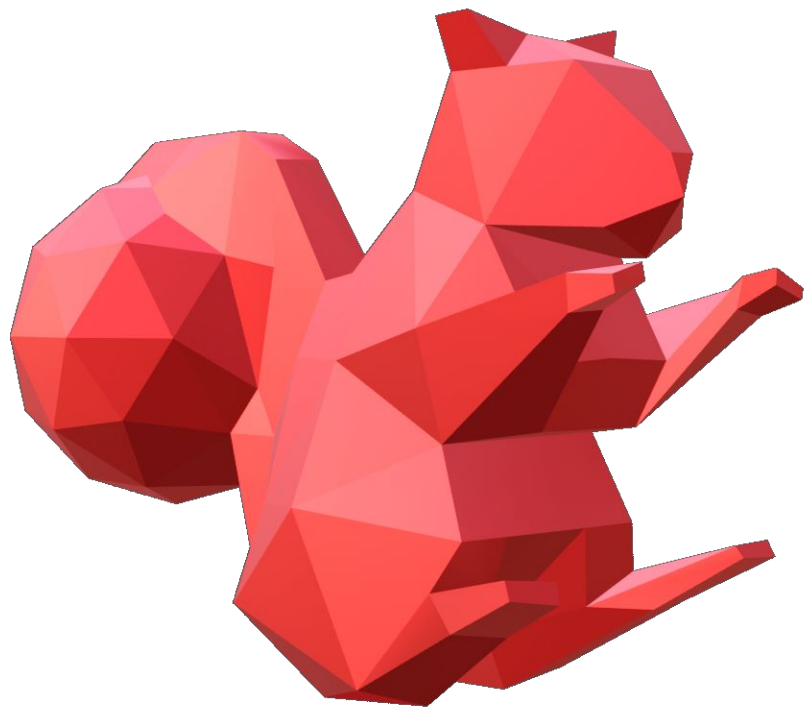


Unfolding and nesting process (papercraft style)



Vectorize and laser cut (including die-cut for folding)





Folding and Reassembly  
Welded at certain points to fix



## Final paint coating – Powder Coating

Powder coating is a protective and decorative finish applied to the metal. It involves the application of dry, finely ground particles of color pigments and resins onto the metal surface. The powder-coated item is then heated, causing the powder particles to melt and fuse, forming a durable and smooth plastic coating on top of the metal.

Powder coating offers several advantages, including excellent resistance to corrosion, chipping, and fading.

## Powder Coating Specifications. Color fading: Delta E<5

	AAMA 2603	AAMA 2604	AAMA 2605
Humidity resistance	1500 hours	3000 hours	4000 hours
	Few blisters	Blisters size 8	Blisters size 8
Salt spray resistance	1500 hours	3000 hours	2000hrs aggressive cyclical
	1-2mm creepage	1-2mm creepage	1-2mm creepage
	Blisters size 8	Blisters size 8	Blisters size 8
Florida exposure	1 year	5 years	10 years
Color retention	Slight change	Delta E <5	Delta E <5
Chalk resistance	Slight change	No more than 8 rating	No more than 8 rating, 6 rating for whites
Gloss retention	Slight change	Minimum 30%	Minimum 50%



Arsenal Park Public Artwork		
<b>Sasha Reisin &amp; Urbanismo Vivo</b>		
for The City of Pittsburgh		
Updated July 10th, 2023		
<b>PROJECT AWARD</b>		<b>\$ 17.000,00</b>
<b>PROJECT EXPENSES</b>		<b>Amount</b>
<b>Artist Fee</b>		
	up to 20% of total project budget	\$3.400,00
	Subtotal Artist Fee	\$3.400,00
<b>Project Team Professional Labor</b>		
	School Workshop assistants	\$250,00
	Design and 3d modeling	\$1.500,00
	Interviews and data process	\$500,00
	Community workshop design	\$400,00
	Subtotal Project Team	\$2.650,00
<b>Fabrication Costs</b>		
	Metal sheets	\$2.000,00
	Die cut	\$1.000,00
	Anodize coating	\$1.500,00
	Assembly and welding	\$2.000,00
	Transportation to suppliers	\$500,00
	Installation	\$500,00
	Subtotal Fabrication Costs	\$7.500,00
<b>Other Expenses</b>		
	Artist Insurance	\$500,00
	Travel (parking, mileage, lodging, etc.)	\$1.500,00
	Project documentation	\$600,00
	Subtotal Other Expenses	\$2.600,00
	Total Project Expenses	\$16.150,00
	Artist's Contingency (5%)	\$850,00
	<b>Grand Total Project Costs</b>	<b>\$17.000,00</b>
	<b>Amount Under (Over) Budget</b>	<b>\$0,00</b>

Information to be printed on signage onsite is given below. Signage will link via QR to city website where full information can be found

## **Fusion Trail**

### **Sasha Primo + Urbanismo Vivo**

The fusion of animals and elements in the sculptural trail seeks to revalorize the heritage, identities and stories of Arsenal Park and the surrounding community.

To learn more about the artwork, the artists, and the participatory process that inspired this work, scan the QR code below or visit [pittsburghpa.gov/dcp/arsenal-park-art](https://pittsburghpa.gov/dcp/arsenal-park-art).

---

#### SQUIRREL

In the heart of the park, a common creature thrives, captivating visitors with its unique agility and swift movements. This delightful animal, the squirrel, not only brings joy through its friendly interactions with humans but also holds a profound symbolic meaning. Across cultures, squirrels are revered as symbols of resourcefulness, energy, and playfulness, embodying the connection between different elements of the natural world.

#### FIREWORKS/ARSENAL

The 4th of July fireworks, a beloved tradition in the park, illuminate the sky with joyous light. They create a sense of community and family bonding, while also honoring the park's rich history. Through the fireworks, we commemorate Arsenal's past and celebrate the park's vibrant heritage, embodied in its iconic buildings and monuments.

---

#### TURTLE

Carrying a rich symbolic history in many indigenous cultures, the turtle holds profound significance. In the Seneca "story of the sky woman," it becomes a powerful link between the sky and the earth, embodying ancestral traditions and meanings that are often overlooked. Its slow and steady movements symbolize patience, resilience, and longevity, reminding us of the wisdom found in taking life's journey one step at a time.

#### INDIGENOUS CULTURES

Trees not only symbolize the connection between the sky and the earth but also represent a source of life and shelter for many animals that inhabit the park. As such, they are an integral part of the natural environment and help to sustain the delicate balance of the ecosystem. Trees have a direct connection to "Story of the Sky Woman" and this image emerged frequently in a workshop held at Arsenal Elementary School.

---

## FIREFLIES

Within the mysterious and hidden world of insects lies the firefly, which plays a crucial role in the natural ecosystem of parks. Despite their small size and humble appearance, they captivate us in a unique and almost romantic way. Their flickering light in the darkness acts as a mysterious and enchanting signal.

In many ways, insects become a metaphor for the hidden stories of Lawrenceville. Like these tiny creatures, the stories may be initially difficult to see or understand, yet they reside, patiently waiting to be discovered and appreciated. They form a rich tapestry of experiences and cultures, intricately woven to shape the community over time—from migrations and settlements to the processes of development and growth.

## MIGRATION

The flying luminescence serves as a reference to the inherent value placed on migration stories, symbolizing the transformative journey from one place to another that shapes our identities. It embodies the idea of mobility, showcasing the ability to adapt and flourish in new environments.

It becomes a captivating embodiment of the interconnectedness between self and environment, reminding us of the profound influence our surroundings have on our own luminosity.

---

## BEAVER

The beaver is a transformative animal, thriving in both land and water environments. They are a keystone species, showcasing remarkable engineering skills: their dam construction creates wetland habitats, providing shelter and sustenance for various plant and animal species. In this region, it holds symbolic significance as a once abundant animal now facing extinction, reminding us of historical and ecological changes.

## HOUSES / HOMES

Houses are built, homes are made. Sometimes, these concepts seem to blend and spatially merge. When houses are filled with experiences and emotions, they turn into homes. As homes, they can travel, move and evolve over time.

We can also feel at home when sharing with people in our communities. We can shape our public spaces in our neighborhoods and cities by interacting with others. A home cannot be defined, it's felt. It is at the heart of every individual, family, and spreads across generations.

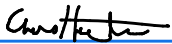


**CITY OF PITTSBURGH**  
**DEPARTMENT OF PUBLIC WORKS**

**TO:** Anthony Cavalline, PACD Specialist **DEPT:** City Planning  
**FROM:** Chris Hornstein, Director **DEPT:** Public Works  
**DATE:** August 7, 2023  
**RE:** Letter of Support – Arsenal Park Public Art

---

This memo serves as a Letter of Support for the Arsenal Park Public Art project as noted above. The project addresses the public art component of a community need for the replacement of an existing playground and the expansion to a newly installed spray pad and picnic pavilion. The public art engagement process worked to ensure that the art is in alignment with the community vision. The Department of Public Works is proud to support this project.



[Chris Hornstein \(Aug 7, 2023 16:07 EDT\)](#)

C:  
Andrea Ketzel, RLA, Senior Project Landscape Architect/DPW



## PITTSBURGH COUNCIL DISTRICT 7

### OFFICE OF DEBORAH L. GROSS



August 4, 2023

Public Art & Civic Design Commission

Dear Commissioners,

As Councilwoman for the 7th District, I am writing to you to express my fullest support for this inclusive and community-driven public art project for Arsenal Park.

The change in housing and residents Lawrenceville has seen over the last two decades has been more profound than in any other Pittsburgh neighborhood. Change on its own, does not guarantee positive outcomes. I have often noted, a sea of strangers is not a neighborhood. If we don't build strong social networks, we risk new residents never becoming neighbors. I am always impressed by the creative ways that the residents of Lawrenceville put in the work to build new relationships and create true social bonds.

Community-driven arts projects like this create the relationships that will sustain neighborliness and keep Lawrenceville a strong, healthy, special place into the future.

I commend the Public History, Art, & Design office and the Department of City Planning for taking the time and effort to bring residents and students together and the resulting vision for community-driven public art in Arsenal Park.

I urge the Public Art and Civic Design Commission to accept this proposal.

Sincerely,

210101

A handwritten signature in blue ink, appearing to read "Deborah L. Gross".

Deborah L. Gross

District 7 Pittsburgh City Councilwoman



August 21, 2023

Public Art & Civic Design Commission  
Department of City Planning  
100 Ross Street  
Pittsburgh, Pennsylvania 15219

RE: Arsenal Park Artwork Letter of Support

Dear Members of the Public Art & Civic Design Commission:

Lawrenceville Corporation (LC) and Lawrenceville United (LU) are writing this letter of support for the artwork developed by Sasha Reisin & Urbanismo Vivo for Arsenal Park. Driven by the Lawrenceville community, LC serves as a catalyst and conduit for responsible and sustainable growth in the Lawrenceville community. Lawrenceville United's (LU) mission is to improve and protect the quality of life for all Lawrenceville residents. Both of our organizations have been part of the public process to design thoughtful and creative public art sculptures to be installed in Arsenal Park.

We would like to express our full and continued support for this project and appreciate the artists' ability to visualize the words and ideas developed during the multi-month long public process. The four (4) animal structures successfully captured the participants' whimsical thoughts as the artists engaged with a wide range of community stakeholders both young and young at heart. We feel that the art will be enjoyed by generations to come.

Please free free to contact us with any questions or concerns.

Sincerely,

Sarah Trbovic  
Executive Director  
Lawrenceville Corporation  
100 43rd Street, Suite 208  
Pittsburgh, PA 15201  
(412) 621-1616  
Saraht@LawrencevilleCorp.com

Dave Breingan  
Executive Director  
Lawrenceville United  
118 52nd Street, Suite 2026  
Pittsburgh, PA 15201  
(412) 802-7220  
Dave@LUnited.org



**Evan Rumble LLC**  
*Art & Portfolio Projects*

Radiant Hall Studios  
734 Thompson Ave  
McKees Rocks, PA 15136  
[evanrumble.com](http://evanrumble.com)  
[studio@evanrumble.com](mailto:studio@evanrumble.com)

Dear members of the Public Art & Civic Design Commission,

I am writing to you today on behalf of Sasha Reisin & Urbanismo Vivo as they seek approval to develop and fabricate the public art project to be installed at the proposed Community Art Trail in Arsenal Park in Lawrenceville. Sasha Reisin, or known as an artist as Sasha Primo, conferred and met with me several times throughout the planning stages of the design of the project from late 2022 through Spring 2023.

Upon introductions, it was clear that Sasha was interested in making the project as reflective of the community as possible. Myself, having worked as an art teacher at Arsenal Elementary for several years, Sasha Primo saw my insights as important for creating an entry point to the school and students. I believe that schools and students are integral parts of a community, so I was pleased that the project was aimed at including contributions from the students. I was able to assist Sasha by outlining crucial details on logistics and timelines for workshops and meetups in the elementary school. I was also able to provide some contacts to other educators in Pittsburgh Public Schools who might be willing to collaborate.

Reviewing the Arsenal Park Sculpture Proposal, I am happy to see some of my former students taking part in the School Workshop. It brings a smile to my face to see the inspiring drawings of students which are usually poignantly simple, whimsical, and radiating positivity. I am proud to see that the project used these students' illustrations as inspirations—*kid art is truly the best art* as someone once pointed out to me.

Please accept my recommendations for Sasha and Urbanismo Vivo's public art proposal at Arsenal Park. Amidst the many important concepts that the project elevates, the design demonstrates a concerted effort to include the perspective of the youth and educational community of Lawrenceville. I hope that one day these students will be able to walk through the new park and show their friends the artwork that they helped create.

Sincerely,

A handwritten signature in black ink, appearing to read 'Evan Rumble', with a long horizontal line extending to the right.

Evan Rumble



July 28, 2023

To Whom it May Concern,

This letter is written in support of the Arsenal Park public art project lead by Sasha Reisin and Urbanismo Vivo. As a member of the Pittsburgh Public Schools support administration and fierce advocate for the arts, I believe this project will have a meaningful impact on our school community.

Engaging with the community, particularly with the involvement of our children, is a powerful approach to ensure that the project resonates with residents and becomes an authentic reflection of the shared identity of those that use the park. Through the school workshop, our young people were offered the opportunity to interact with professionals who care for their community.

My involvement in the community engagement process at the beginning stages of this project was very powerful. Sasha's commitment to elevating the voices of our young people through a school workshop was fully supported. This public art project has the potential to spark conversations, inspiration and a renewed sense of pride in Arsenal Park. Enriching the landscape that is accessible to our young people will positively impact both them and future students and community members.

I believe that this project will create a lasting impact on our community and I am committed to providing my support in any way possible. Please do not hesitate to reach out to me if there is any additional information, assistance, or collaboration that I can offer.

Sincerely,

Christina G. Unitas  
Senior Program Officer, Arts Education

Nina Unitas  
Senior Program Officer  
Arts Education

1400 Crucible Street 222D  
Pittsburgh, PA 15205

412.529.4572  
cunitas1@pghschools.org