

Homewood Park Public Art	
Preliminary Review Sheet	
Applicant Name	Public History, Art, & Design Division
Applicant Organization	Department of City Planning
What is your relationship to the project?	Project Coordinator
Co-applicant	Department of Public Works Mikael Owunna
Who will be representing this project at a hearing?	Tony Cavalline, DCP Mikael Owunna, artist
Prior Commission Review	None for the art project; the Park received by reviews by the previous Art Commission in May and November of 2022
Project Address	Homewood Park
Cross Streets and/or other relevant location information	Located between North Lang Avenue, Clawson Street, and Hamilton Avenue
Neighborhood	Homewood South
Development Activities Meeting	To be held prior to Hearing & Action
Project Duration	Permanent
Please give a summary description of the project.	<p>Beginning in 2015, Homewood Community Sports, with the help of Heinz Endowments, Operation Better Block, Neighborhood Allies, Bridging the Gap Development, and The Mission Continues began a study of field improvements at Willie Stargell Field. The extensive community engagement process led to the development of a Master Plan for the existing Stargell Field and expansion of Homewood Park onto the previous Homewood School property along Hamilton Avenue. Based on the results of the Master Plan, the City of Pittsburgh's Department of Public Works and landscape architecture firm Studio Zewde are implementing a large-scale renovation of the park.</p> <p>In line with City Code requirements, 1% of the construction budget was allocated to public art, distributed between four artists.</p> <p>Artist Mikael Owunna's proposal is for a monumental vinyl mural to be installed on the north elevation of the Field House, as detailed in the attached materials.</p>
Who is this project intending to be used or experienced by?	The Homewood community, with special emphasis on attendees of the football games.
What users/stakeholders/community members have been involved so far?	Please see the attached materials for detailed information on project history and community engagement.
What is the timeline of implementation?	Park renovation will begin early in 2024 and continue throughout the summer. This artwork will install once primary construction is complete and any work on the field house is complete.
Are there plans for future expansion of this project?	N/a.

What is the budget for this project, and what are the funding sources?	The budget for this project is \$15,000, and is paid for through the City's Percent For Art program.
Who will be responsible for maintenance of this project, and are there dedicated sources of funding for maintenance?	This project will be owned by the City, and will be maintained as allowed through available funds allocated to the Public History, Art, and Design Division in the City's annual budget. The product manual is attached which references cleaning specifications.
If the project has an online engagement page, please provide the website address.	<a href="https://engage.pittsburghpa.gov/homewood">https://engage.pittsburghpa.gov/homewood</a> . Information about the park renovation and the public art projects can be found on this page. Following Preliminary Review and in anticipation of the eventual Development Activities Meeting, the artists' working concepts will be added to this page.
Please explain any time limitations, budget restrictions, or other conditions that are affecting the scope of this project.	N/a.
Please include any additional information necessary for project review.	Please see the attached document for additional detailed information from the artist regarding the concept, inspiration, and technical specifications for this project.
Letters of support	To be included with Hearing & Action application.

Title: Ancestral Echoes, Future Hopes

Artist: Mikael Owunna

### Concept:

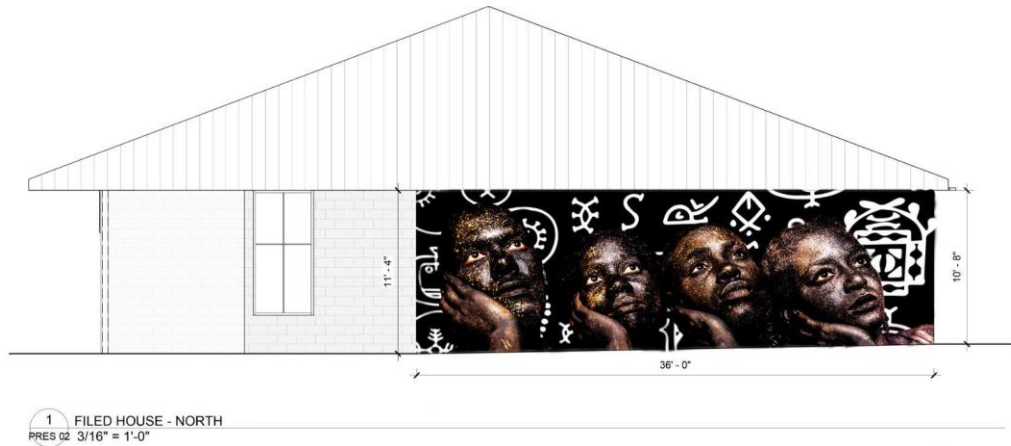
"Ancestral Echoes, Future Hopes" is a monumental public art installation destined for the heart of Homewood's newly designed park on the north face of the Field House. Spanning 36 feet in width and reaching 11 feet 4 inches in height, this vinyl mural is designed as a celebration of hope, community, love, and the rich cultural legacy that the residents of Homewood share. At its core, this installation is a breathtaking portrayal of four black figures, depicted larger than life, with each face adorned in stars and eyes illuminated with hope and dreams. As they collectively gaze towards the top right, a symbol of optimism and forward movement, their hands are gently rested on their right cheeks, embodying contemplation and unity.

The artwork is a multimedia photograph, including a set with meticulously hand painted backdrops and models adorned with body paint. The backdrop for these figures is as profound as the figures themselves. Drenched in the depth of a black background, the mural is accentuated by white Nsibidi symbols, a significant precolonial writing system originating from Nigeria. These symbols, chosen with intentionality, stand for love, community, and the representation of a young man and woman building a home together.

### Artistic Renderings:



Full Piece: "Ancestral Echoes, Future Hopes"

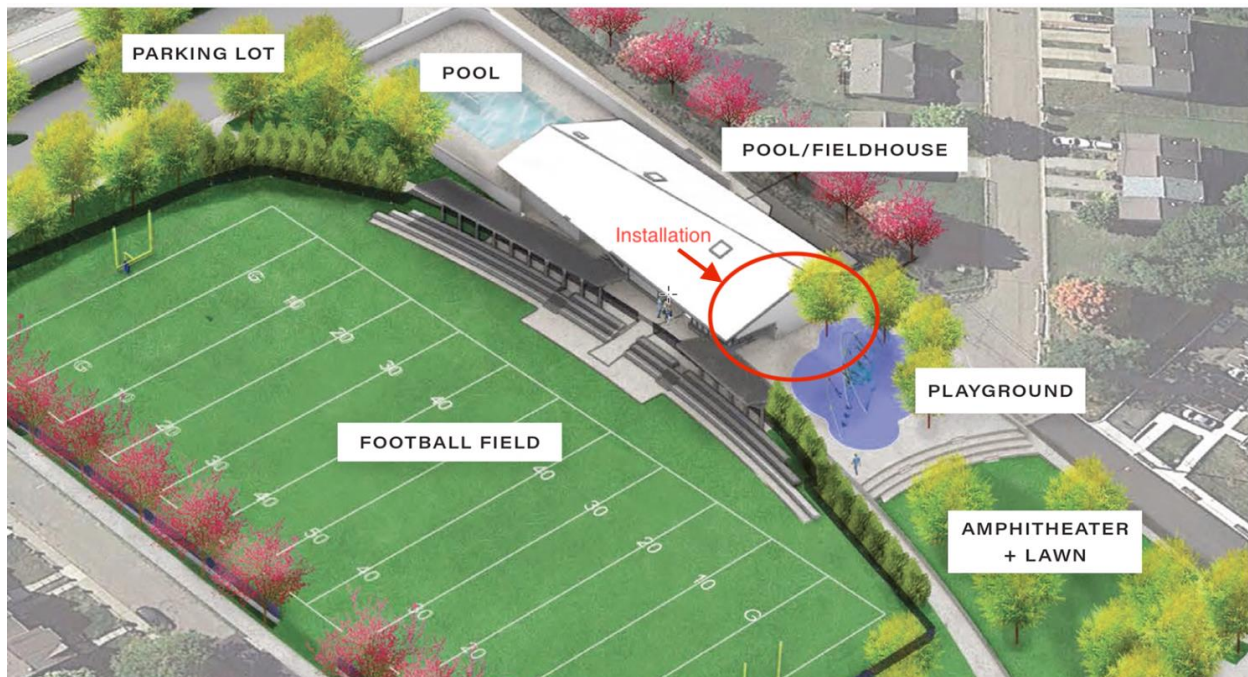


**DIGSAU**  
340 NORTH 12TH STREET  
SUITE 401  
PHILADELPHIA, PA 19107

HOMWOOD PARK

DRAWING NO.  
**PRES**  
**02**  
PROJECT NO. 2191

Installation Rendering: "Ancestral Echoes, Future Hopes"



Installation Location: "Ancestral Echoes, Future Hopes"





Figure 1 “Ancestral Echoes, Future Hopes”



Figure 2 “Ancestral Echoes, Future Hopes”

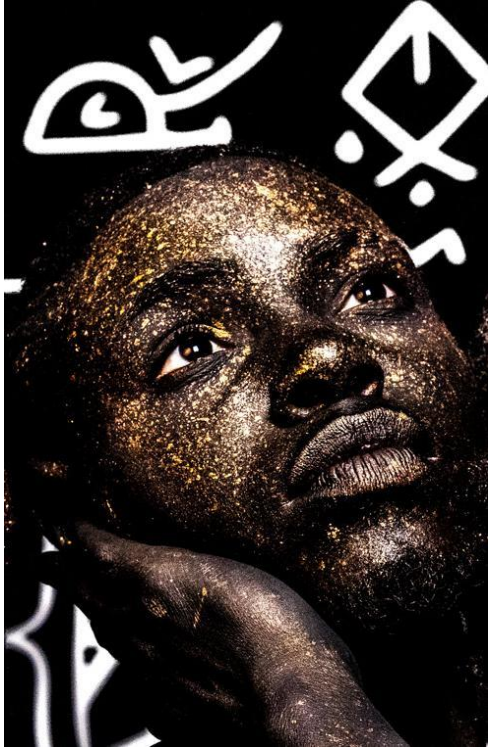


Figure 3 “Ancestral Echoes, Future Hopes”



Figure 4 “Ancestral Echoes, Future Hopes”

## Inspiration:

"Ancestral Echoes, Future Hopes" seeks to bridge the storied past with the boundless future. The Nsibidi symbols serve as a connection to a deep-rooted African heritage, a reminder that even in times of adversity, communities like Homewood have a rich lineage of strength, resilience, and unity to draw from. By juxtaposing these ancient symbols with the forward-looking gazes of the figures, the mural conveys the narrative that as we honor and draw strength from our ancestors, we look to the future with hope and aspirations.

The vibrant history of Homewood and ongoing community engagement inspired the work's symbols of empowerment and unity. This mural is intended to serve as an everyday reminder to residents and visitors of the neighborhood's positive spirit and inspire an even brighter future.

In essence, "Ancestral Echoes, Future Hopes" is not just an artwork; it is a message — a message that the community of Homewood looks towards a horizon filled with hope, unity, and endless possibilities.

## Historical Context & Prior Engagements:

My commitment to public art and community activations in Homewood can be traced back to my partnerships with the Oasis Project. This community and economic development arm of Homewood's Bible Center Church has been pivotal in shaping the essence of the community since 1956.

Everyday Café: Located a stone's throw away from the new Homewood Park, I was honored to contribute vinyl displays from my "Infinite Essence" collection to the café's front windows. "Nommo Semi, Guardian of Space" and "Amma's Womb", both rooted in West African Dogon myth, were selected to emanate protection and fertility for the patrons and neighborhood.

Juneteenth Townhall: In 2021, I organized and led a townhall conversation at Everyday Café in honor of Pittsburgh recognizing Juneteenth locally for the first time. A diverse range of topics, from the significance of the holiday to the importance of traditional African cosmologies and the state of Black art in Pittsburgh, were deliberated. Collective engagement with community members was a central feature of this town hall.

Maker's Clubhouse Collaboration: I led a STEAM (Science, Technology, Engineering, Art & Math) workshop for 12 middle school students from Homewood at the Maker's Clubhouse, the flagship youth program of the Oasis Project. Here, I worked with the students to explore my artistic techniques and African myths, culminating in them creating their own portraits inspired by my public art installation at Everyday Café.

Through these endeavors, especially the “Infinite Essence” installation at Everyday Café and close collaboration with Pastor Cynthia Wallace, I gained insights into the vibrant soul of Homewood that has served as the inspiration for my design and development for “Ancestral Echoes, Future Hopes” in the new Homewood Park.

## Design & Development Timeline for Installation:

April 18, 2022:

Kick-off meeting with community stakeholders from Homewood Community Sports and City of Pittsburgh initiated the project. Together, we outlined the vision and aspirations for the project.

July 30, 2022:

A comprehensive site visit provided a tangible feel of the space and its potential. In-depth discussions with community stakeholders from Homewood Community Sports highlighted the community's aspirations, with an emphasis on inspirational artwork for youth.

July 31, 2022:

Attending a community football game at the park, deepened connections with our community stakeholders. Conversations with friends, family, and staff members from Homewood Community Sports reiterated the need for artwork symbolizing the strength of the community and the team.

September 16, 2022:

The Design Team convened with community stakeholders, architects, and City of Pittsburgh staff. This collaborative space helped mold ideas on how the artwork could seamlessly integrate into the new built environment.

Fall 2022:

I executed the first photoshoot, referencing specific historical figures from Homewood, and produced preliminary design mockups, laying the groundwork for the artwork.

February 23, 2023:

Initial designs were presented to community stakeholders from Homewood Community Sports and City of Pittsburgh staff. Feedback involved not anchoring the artwork to specific historical figures from Homewood but focusing on general figures of empowerment that signify community leadership and inspire the youth.

Spring 2023:

Feedback from stakeholders was meticulously incorporated, necessitating design revisions and additional research.

Summer 2023:



A revised photoshoot and the final design mockup for "Ancestral Echoes, Future Hopes" was realized, incorporating the 17 months of community feedback and engagement.

## Community Engagement as the Heartbeat of the Project:

Community engagement has been central to the development process of "Ancestral Echoes, Future Hopes." From my past work creating public art and community activations in the community, to the nearly year and a half of engagement sessions that were used to integrate community feedback into this installation, I have focused on understanding the community's aspirations for the artwork and the Park as a whole. "Ancestral Echoes, Future Hopes" is intended to be more than an art installation—it is a tribute to the inspiring spirit of Homewood.

## Technical Details for "Ancestral Echoes, Future Hopes" Installation

### Dimensions & Location:

"Ancestral Echoes, Future Hopes", will span a width of 36 feet and extend to a height of 11 feet 4 inches. It is strategically planned to be affixed to the north face of the Park's field house, offering optimal visibility and prominence within the park's layout. The CMU brick wall of the field house provides a sturdy and reliable base for the installation, ensuring longevity and durability.

### Materials:

The chosen medium for this installation is a vinyl wrap material, known for its resilience and adaptability to outdoor conditions. Specifically, the material is 3M 480 Cv3, a high-performance vinyl renowned for its dimensional stability, durability, and resistance to shrinking and swelling. To further enhance the artwork's resilience against the elements, a protective overlay of 3M 8548G will be laminated on the face. This lamination not only protects the underlying artwork from potential environmental wear but also gives it a refined, professional finish that heightens the visual appeal.

### Maintenance & Upkeep:

Recognizing the potential need for touch-ups and maintenance in the long run, a high-resolution digital file of the artwork will be provided to the City. This will act as a reference for the City and

any professional artists or technicians they employ in the future for upkeep purposes. This proactive approach ensures that "Ancestral Echoes, Future Hopes" remains vibrant and pristine for years to come, continuing to inspire and uplift the Homewood community.

## Intended Audience for "Ancestral Echoes, Future Hopes" Installation

The primary audience for "Ancestral Echoes, Future Hopes" is the Homewood community at large. This artwork is based in the area's rich cultural and historical tapestry, and is intended to connect both with those who have called Homewood home for generations, as well as newcomers who are weaving their own stories into the community's fabric.

A special emphasis is placed on attendees of the football games. Given the mural's location on the north face of the field house, it will naturally catch the eyes of those attending matches. The football field is more than just a place for sports; it is a gathering space, a place of camaraderie, and a hub of community spirit. As such, the artwork is designed to evoke feelings of unity, pride, and collective aspiration among spectators, players, coaches, and everyone involved in these community events.

## Community Engagement and Outreach for "Ancestral Echoes, Future Hopes" Installation

Throughout the development of the "Ancestral Echoes, Future Hopes" project, an extensive and varied range of engagement and outreach activities were undertaken to ensure the artwork truly resonated with the core spirit of the Homewood community. The following outlines the engagement process and the stakeholders involved:

### Ongoing Collaborations in Homewood:

**Everyday Café:** Located a block away from the Park, I created a window vinyl public art installation here with images from my *Infinite Essence* series in the café's front windows, allowing direct engagement with community members. The positive feedback and reactions from patrons were invaluable in gauging community sentiment to the artwork both in person and on social media.

**Juneteenth Townhall:** This conversation I hosted at Everyday Café on the occasion of Pittsburgh recognizing Juneteenth as a local holiday proved to be a rich source of insights. It not

only explored the significance of the holiday but also delved into the aspirations for Homewood's future.

**Maker's Clubhouse:** I conducted a STEAM (Science, Technology, Engineering, Art & Math) workshop with 12 middle school students from Homewood at Maker's Clubhouse. This workshop provided direct engagement for me with the younger generation, enriching the project's perspective.

## Community Meetings:

### Kick-off Meeting:

Date: April 18, 2022

Attendees: Community stakeholders from Homewood Community Sports and representatives from the City of Pittsburgh.

Purpose: To initiate discussions, gather preliminary feedback, and align on the broader vision for the artwork in the new park.

### Site Visits:

Dates: July 30, 2022, and July 31, 2022

Attendees: On the first day, community stakeholders from Homewood Community Sports were present. On the second day, friends, family, players, and staff members from Homewood Community Sports joined during a series of football games for different age groups at the Park.

Purpose: To gain an in-depth understanding of the site, discuss the community's vision, and understand the needs of the youth program. By attending community football games, direct interactions with families, friends, players, and staff offered insights into the collective spirit of the community, their hopes, and their aspirations. The theme of creating artwork that celebrates the strength of the community and team was emphasized.

### Design Team Meeting:

Date: September 16, 2022

Attendees: Community stakeholders from Homewood Community Sports, architects, and City of Pittsburgh staff.

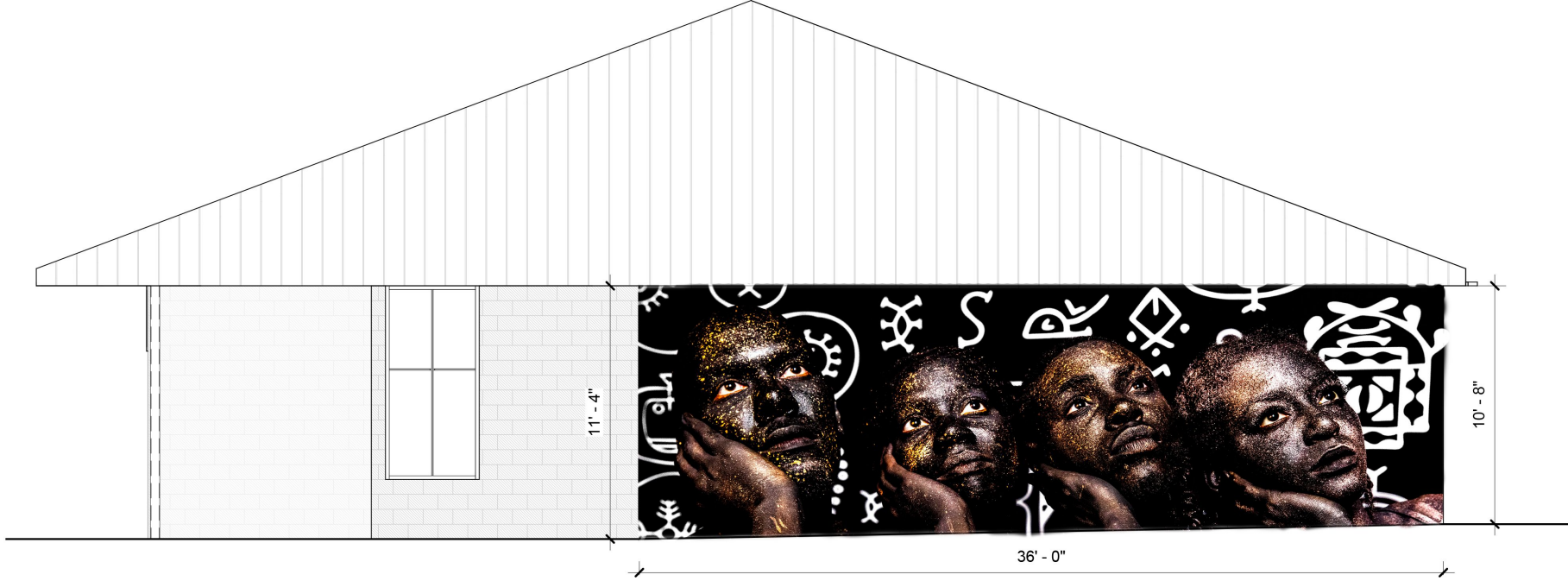
Purpose: This meeting explored how the artwork would integrate seamlessly into the park's architecture and design.

### Feedback and Revision Sessions:

Date: February 23, 2023

Attendees: Community stakeholders and City of Pittsburgh representatives.

Purpose: Preliminary designs were showcased to gather feedback. The emphasis during these discussions was to ensure the artwork's themes were universal, focusing on the broader essence of community leadership.



1 FILED HOUSE - NORTH  
 PRES 02 3/16" = 1'-0"

## Characteristics

These are typical values for unprocessed product. Processing may change the values.

## Performance Characteristics

Characteristic	Value
Material	Non-PVC
Thickness	2 mils
Gloss	<b>8548G:</b> Gloss <b>8549L:</b> Luster <b>8550M:</b> Matte
Liner	<b>8548G:</b> Polyester <b>8549L/8550M:</b> Kraft paper
Lamination Temperature	50 to 100 °F (10 to +38 °C)
In Use Temperature Range	-65 to +200 °F (-54 to +93°C) (not for extended periods of time at the extremes)
Chemical Resistance	<ul style="list-style-type: none"><li>Resists mild alkalis, mild acids, and salt</li><li>Excellent resistance to water (<i>does not include immersion</i>)</li><li>Resists occasional fuel spills</li><li><b>Does not resist isopropyl alcohol</b></li></ul>
Flammability	ASTM E84 reports: <a href="#">8548G</a> , <a href="#">8550M</a> or go to the On-line Product Catalog at <a href="#">3M.com/graphics</a> All other test reports: call 1-800-328-3908

## Warranty Information

All 3M graphic protection products are covered by the 3M Basic Product Warranty.

A warranty period may be offered based on the graphic construction and application details. Always refer to the 3M Product Bulletin for the 3M base film or flexible substrate you are using to determine if the graphic protection product you want to use is recommended and what, if any warranty period is offered.

### IMPORTANT NOTE

Warranty information including limitations and exceptions and warranty periods for this product can be found at [3MGraphics.com/warranties](#).

## Warranty Coverage Overview

The warranty coverage for eligible graphics is based on the user both reading and following all applicable and current 3M Graphics Product and Instruction Bulletins. The warranty period for eligible graphics is as stated in the 3M Graphics Warranties Matrices at the time that the film was purchased. Information found at [3M.com/graphicswarranties](#) includes:

- [3M Graphics Warranties Bulletin](#)
  - This bulletin contains information on limitations and exceptions, and warranty period reductions for 3M Graphics Warranties. The warranty period may be reduced and stipulations may apply for certain constructions, applications, and graphic exposures as covered in this Bulletin.
- [3M Graphics Warranties Selector](#)
  - Use this selector to search for your vertical warranty period by product type, ink type, film name, and/or ink/prINTER platform.
- [U.S. Desert Southwest Region Map](#)
  - Use this map of hot, arid desert areas to determine if you are subject to reduced warranted durabilities.

The warranties set forth in this Bulletin are made in lieu of all other express or implied warranties, including any implied warranty of merchantability, fitness for a particular purpose, or arising out of a course of dealing, custom, or usage of trade.



## 3M Basic Product Warranty

3M Graphics Products are warranted to be free of defects in materials and manufacture at the time of shipment and to meet the specifications stated in its applicable 3M Graphics Product Bulletin and as further set forth in the [3M Graphics Warranties Bulletin](#).

## Limited Remedy

The limited remedy applicable to each warranty is addressed in the 3M Graphics Warranties Bulletin found at [3M.com/graphicswarranties](#).

## Limitation of Liability

Except to the extent prohibited by law, 3M SHALL NOT UNDER ANY CIRCUMSTANCES BE LIABLE TO PURCHASER OR USER FOR ANY DIRECT (EXCEPT FOR THE LIMITED REMEDY PROVIDED HEREIN), INDIRECT, SPECIAL, INCIDENTAL, OR CONSEQUENTIAL DAMAGES (INCLUDING, BUT NOT LIMITED TO, LABOR, NON-3M MATERIAL CHARGES, LOSS OF PROFITS, REVENUE, BUSINESS, OPPORTUNITY, OR GOODWILL) RESULTING FROM OR IN ANY WAY RELATED TO 3M'S GRAPHICS PRODUCTS, SERVICES, OR THIS BULLETIN. This limitation of liability applies regardless of the legal or equitable theory under which such losses or damages are sought.

## Warranty Period Matrices

See the 3M Graphics Warranties Matrices at [3M.com/graphicswarranties](#), for vertical warranty period information specific to your film.

## Additional Limitations

See the 3M Graphics Warranties Bulletin at [3MGraphics.com/warranties](#), for terms, additional limitations of your warranty, if any, information on reduced warranties for different exposures, and limitations of liability.

## Health and Safety

### CAUTION

When handling any chemical products, read the manufacturers' container labels and the Safety Data Sheets (SDS) for important health, safety and environmental information. To obtain SDS sheets for 3M products go to [3M.com/SDS](#), or by mail or in case of an emergency, call 1-800-364-3577 or 1-651-737-6501.

When using any equipment, always follow the manufacturer's instructions for safe operation.

## Factors that Affect Graphic Performance Life

The actual performance life of a graphic is affected by:

- the combinations of graphics materials used.
- complete ink drying or curing.
- selection, condition and preparation of the substrate.
- surface texture.
- application methods.
- angle and direction of sun exposure.
- environmental conditions.
- cleaning or maintenance methods.

## Graphics Manufacturing

### CAUTION

Before using any equipment, always read the manufacturer's instructions for safe operation.

### Completely Dry Graphics

### IMPORTANT NOTE

Incomplete drying or curing can result in graphic failure including curling, increased shrinkage and adhesion failure, which are not covered under any 3M Graphic Warranty.

See the specific ink's 3M Product and Instruction Bulletin for more details.

## Application Tapes

There are two types of application tapes. See [3M Instruction Bulletin AT-1](#) to determine what application tape is recommended for the film or finished graphic.

### Premasking Tape

Increases stiffness during application while preventing stretching and damage. Use when little or no liner is exposed. See [3M Instruction Bulletin 4.3](#) for complete details.

### Prespacing Tape

Holds cut and weeded letters or graphics in place during application and after removing the film liner, while preventing stretching and damage. Use when large amounts of liner are exposed. See [3M Instruction Bulletin 4.3](#) for complete details.

## Application and Installation

In addition to other 3M Bulletins specified in this document, the following Bulletins provide details that the user may need to properly manufacture a graphic.

- [3M Instruction Bulletin 4.22](#) Lamination Basics for Inkjet Printed Graphics

## Slip Resistance for Floor or Sidewalk Sign Graphics

The UL 410 Slip Resistance of Floor Surface Materials covers the testing of floor and finishing materials to determine if their minimum average and minimum individual static coefficients of friction (COF) meet or exceed the specified requirements with respect to slip resistance only. The floor surface materials covered by this standard include floor coverings (FCM), floor treatment materials (FTM) and walkway construction materials (WCM). The average static coefficient of friction for FTM, FCM, and WCM products shall be at least 0.50 and individual static coefficients of friction shall be at least 0.45 when tested in accordance with the requirements of this standard

**Method:** The floor samples were tested dry only. The slip resistance characteristics of the materials were measured in accordance with the established and standardized practice of Underwriters Laboratories Inc. and in accordance with the latest Standard of Slip Resistance of Floor Surface Materials, UL 410.

**Results:** An average slip resistance characteristic greater than 0.50 was recorded for each of the materials tested.

## Maintenance and Cleaning

Use a cleaner designed for high-quality painted surfaces. The cleaner must be wet, non-abrasive, without solvents, and have a pH value between 3 and 11 (neither strongly acidic nor strongly alkaline). See [3M Instruction Bulletin 6.5](#) for details.

### IMPORTANT NOTE

It is not recommended to use Isopropyl alcohol on the Products specified in this document. Use a detergent, such as Simple Green™, and water to clean.

## Shelf Life, Storage and Shipping

### Shelf Life

The shelf life is **never more than 3 years** from the date of manufacture on the original box.

If you process the film, the shelf life is changed to **1 year** from the processing date, but not later than the 3 year maximum from the manufacturing date.

### Storage Conditions

- 40° to 100 °F (4° to 38 °C)
- Out of sunlight
- Clean, dry area
- Original container
- Bring the film to room temperature before use

### Shipping Finished Graphics

Flat, or rolled printed side out on 6 inch (15 cm) or larger core. This helps prevent the application tape, if used, from popping off.

#### Commercial Solutions

3M Center, Building 220-12E-04  
St. Paul, MN 55144

1-800-328-3908  
[3M.com/Graphics](http://3M.com/Graphics)

© 3M 2020. All rights reserved.

3M, Controltac, Comply, and MCS are trademarks of 3M. Used under license in Canada.

All other trademarks are property of their respective owners.

Revision E, July 2020 Please recycle.





Michelle Gainey  
First Lady, City of Pittsburgh  
Founder, Greater Pittsburgh Arts Project  
6451 Apple Street  
Pittsburgh, PA 15206

October 21, 2023

Dear Members of the Public Art & Civic Design Commission,

I am writing this letter of support to express my full support and that of the Greater Pittsburgh Arts Project for artist Mikael Owunna's proposed public art commission for the new Homewood Park: *Ancestral Echoes, Future Hopes*.

The Greater Pittsburgh Arts Project creates dynamic exhibitions that showcase the brilliance of Pittsburgh's local art community, including rotating monthly showcases in Pittsburgh's Mayor's Office, pop-up events in City Hall and the Cultural District, and community engagement events and collaborations with arts organizations across the City.

We have had the tremendous honor of collaborating with Mikael on several occasions. We had the enormous pleasure of featuring work from his stunning *Infinite Essence* collection both in the Mayor's Office and at two of our Pop-Up events across the City. The reactions elicited from our community have been nothing short of spectacular. Mikael's artwork doesn't merely captivate; it speaks to the spirit, invoking sentiments of wonder, elevation, and a profound sense of the limitless potential within us. It pushes boundaries and invites us to reimagine what true freedom feels and looks like.

Based in Homewood, we have been thrilled by Mikael's deep community engagement and commitment to inspiring future generations in our neighborhood. His art is not only about aesthetics; it is about legacy and impact. This includes a gorgeous public art installation he produced at Everyday Café, which serves as a daily reminder to all passersby of our greater humanity. Mikael has etched imprints of positive change and inspiration in our neighborhood.

*Ancestral Echoes, Future Hopes* is inspired by the insights into the vibrant soul of Homewood that Mikael has gained from his years of work in the community. The artwork is a monumental celebration of hope, community, love, and the rich cultural legacy that the residents of Homewood share. I urge you to see this not just as a piece of art, but as a transformative

emblem of community spirit. We wholeheartedly endorse this project and envision it as a beacon that will resonate with park visitors, Homewood residents, and neighbors from all walks of life. We urge the members of the Public Art & Civic Design Commission to grant approval to this inspiring new addition to our community that will captivate audiences for generations to come.

Sincerely,

*Michelle Gainey*

Michelle Gainey  
First Lady, City of Pittsburgh  
Founder, Greater Pittsburgh Arts Project





Your kingdom come, your will be done, on earth as it is in heaven. Matthew 6:10

Cynthia M. Wallace, EdD  
Executive Director, The Oasis Project  
7238 Fleury Way  
Pittsburgh, PA 15208  
cwallace@bcpgh.org

October 11, 2023

To the Public Art & Civic Design Commission,

Re: Support for "Ancestral Echoes, Future Hopes" by Mikael Owunna

I am writing to express Bible Center Church - The Oasis Project's wholehearted endorsement of the proposed public art installation, "Ancestral Echoes, Future Hopes," by Mikael Owunna. The artwork is poised to be a remarkable addition to a new park being constructed in Homewood, replacing Willie Stargell Field.

We have had the pleasure and honor of collaborating with Mikael on numerous occasions, witnessing first-hand the depth of his passion, commitment, and connection to the Homewood community. From our collaborative endeavors at the Everyday Café, the insightful STEAM workshop he facilitated for our after-school program, The Maker's Clubhouse, to the meaningful community Juneteenth program we hosted, Mikael's artistic vision has consistently resonated with the heartbeat of our community.

One of the standout aspects of Mikael's engagement with our community has been his intrinsic connection to the youth. His collaboration with The Maker's Clubhouse, our after-school program, wasn't merely an art workshop; it became a valuable life lesson for our young participants. Mikael took the time to discuss his career path with our students, emphasizing the importance of perseverance, following one's dreams, and striving for excellence. His genuine commitment to mentoring and guiding the next generation is both admirable and vital, ensuring they envision a brighter and more inclusive future.

Mikael's passion for art is unmatched, especially when it comes to representing the beauty, resilience, and spirit of the African Diaspora. His art is mesmerizing as it speaks of inner and outer beauty, of struggles and triumphs, and of history and hope. It resonates deeply, not just with members of the African Diaspora but with all who experience it.

Mikael's dedication to capturing the essence of Homewood, its history, and its aspirations, is evident in his previous works and will undoubtedly shine through in "Ancestral Echoes, Future



Your kingdom come, your will be done, on earth as it is in heaven. Matthew 6:10

Hopes." This artwork promises to not only beautify our community but also serve as a beacon of inspiration, reflection, and hope for all who visit the park. We fervently hope that the Public Art & Civic Design Commission will see the immense value this installation will bring to our community and lend its unwavering support.

Sincerely,

Cynthia M. Wallace, EdD  
Executive Director,  
The Oasis Project