

LINCOLN-LEMINGTON-BELMAR

Community Visioning Study

Workshop #2

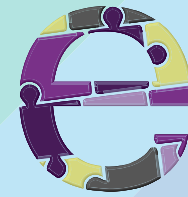


LINCOLN-LEMINGTON-BELMAR

Community Visioning Study

Welcome!

Introductions



e.holdings
Connecting People + Place

LINCOLN-LEMINGTON-BELMAR

Community Visioning Study

Project Overview

- **A unified vision for the neighborhood created through identification of**
 - Assets and opportunities
 - Wants and needs
 - Obstacles or shortcomings
- **Equitable, Future-proof, Action Plan**
 - Through identification of this unified vision, the community will be provided with an overarching vision for which future revitalization and reinvestment actions can focus around



Our Roadmap

Project kick-Off
Workshop

Neighborhood
Analysis

Identify Assets &
Amenities



Visioning &
Consensus Building



Neighborhood
Surveying

Identify Community
Character

Formalization &
Documentation

Goals & Strategies

Call to
Action



Today's Agenda



- What Have We Heard So Far?



- Key Themes



- Visioning Exercise



- Next Steps



What Have We
Heard So Far?



What have we heard so far?



One word to describe LLB:

Resilient	Vision
Diverse	Beautiful
Spirited	Peaceful
Family	Changing
Home	
Permaculture – sustainable	
Parks – greenspace	



Favorite things:

- Families stay for multiple generations
- Very peaceful
- Charter Schools
- Family Oriented
- Convenient



What have we heard so far?



Needed Improvements:

- **Safety**
- **Rec Center Upgrades**
- **Stormwater Management**
- **Paulsen Field Improvements**
- **Walking Paths**
- **Signage**
 - **Community branding**
 - **Gateway signs**



Amenities Needed:

- **Stores**
 - **Retail/Professional Services**
 - **Restaurants**
 - **Grocery / Fresh Produce**
- **Fitness Center**
- **Pharmacy**
- **Community Events**
 - **Sporting**
 - **Cultural**



Key Themes





Key Visioning Themes



Unify the neighborhood into one community



Improve parks, recreation and connectivity



Create gateways and beautification of corridors



Engage the community through events/activities



Encourage more businesses/amenities



Key Visioning Themes



- **What are we missing?**
- **Additional ideas to consider:**
 - Housing needs
 - New development/redevelopment opportunities
 - Public safety
 - Transportation & mobility needs
 - Environment and sustainability
- **What is important to YOU?**

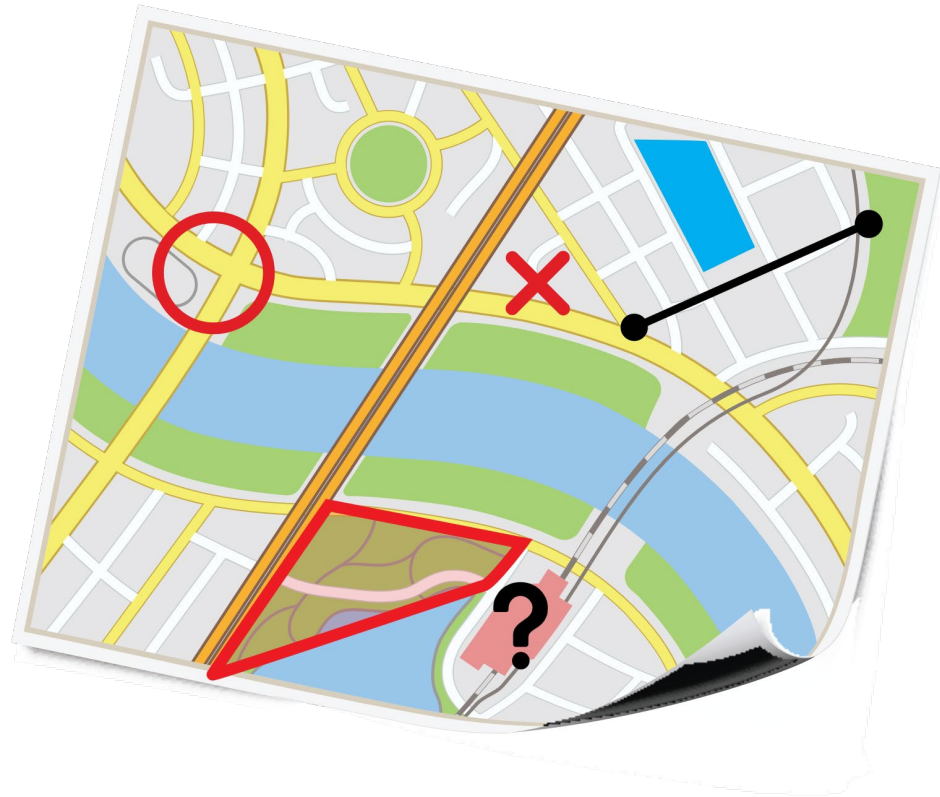


Visioning Exercise





Visioning Exercise



Overview & Explanation

- Two-Parts: mapping & whiteboard

Goals

- Identify specific locations for needed improvements by category
- Thing BIG and SMALL. What projects are low-hanging fruit? What will take time to plan, mobilize and fundraise?



Questions & Next Steps





Next Steps



Follow the project on the engagePGH site and complete the online survey.

<https://engage.pittsburghpa.gov/lincoln-lemington-belmar-visioning-study>



Attend future visioning workshops – the next one for LLB will be on **Thursday, February 11, 2021 @ 6:00pm**



Spread the word! Tell your friends, family & neighbors!

Project Contacts



Amy Wiles

Project Manager

amy.wiles@eholdingsinc.com



Christopher Corbett

City Planning

christopher.corbett@pittsburghpa.gov