

# Virtual Public Plans Display

## City of Pittsburgh Sidewalk Gaps Irvine Street

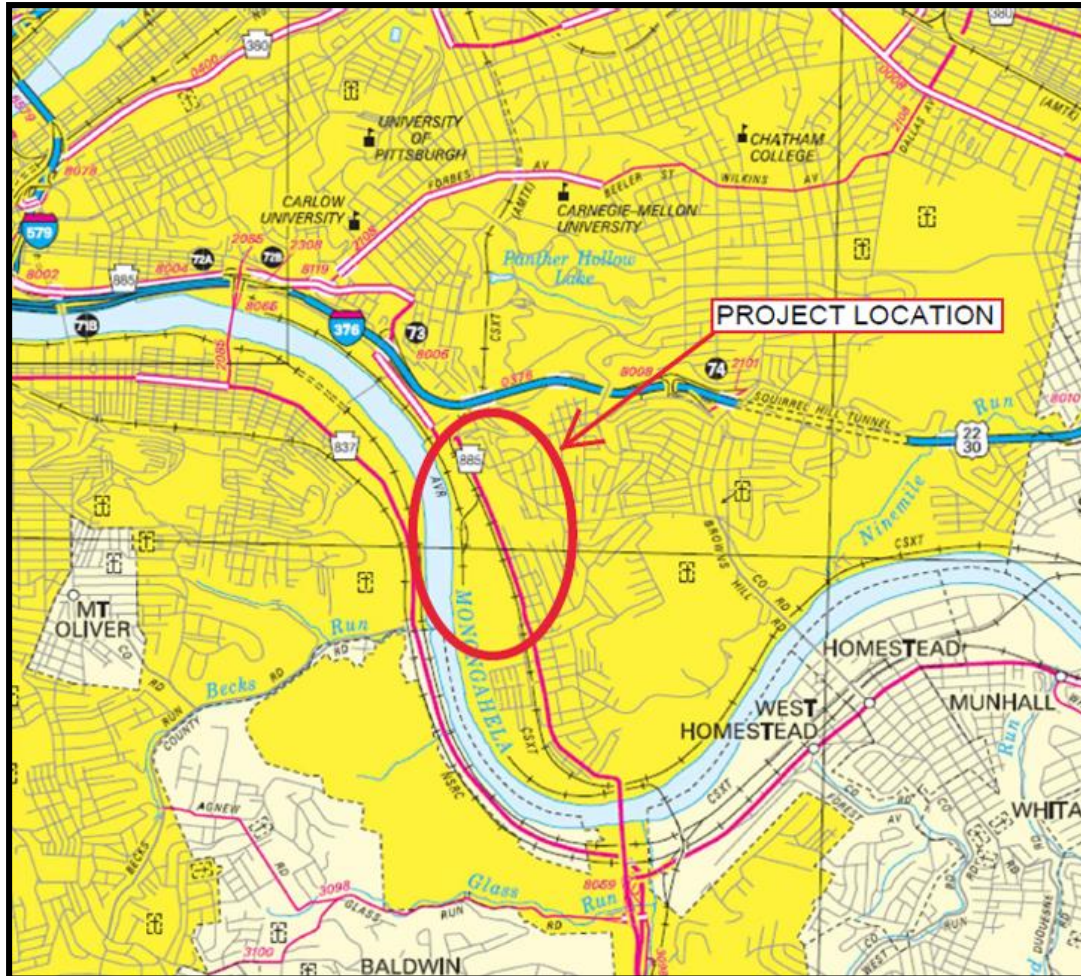
City of Pittsburgh  
Allegheny County  
December 2021

## Project Description

This project consists of the replacement of existing sidewalk, curbs, curb ramps, and driveway aprons along SR 885 (Irvine Street). The project begins approximately 250 ft. north of the intersection with Hazelwood Avenue and extends north to the intersection with Greenfield Avenue.



# Location Map



**SAI** Consulting  
Engineers



CITY OF  
**PITTSBURGH**

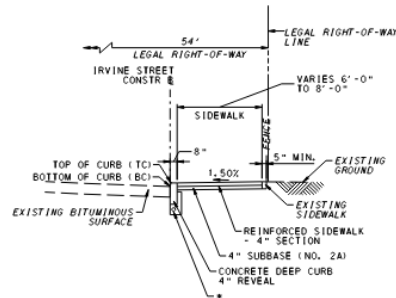
# Maintenance and Protection of Traffic during Construction

- The right lane of SR 0885 (Irvine Street) in the northbound direction will be closed in areas of sidewalk repairs. Channelizing devices will be used to close the lane.
- The lane will be closed in phases between Minden Street and Greenfield Avenue as construction progresses, i.e. the lane will not be closed for the entire distance throughout the duration of construction
- Flagging may be used at times during construction.
- Access to all homes and businesses will be maintained during construction





# TYPICAL SECTIONS

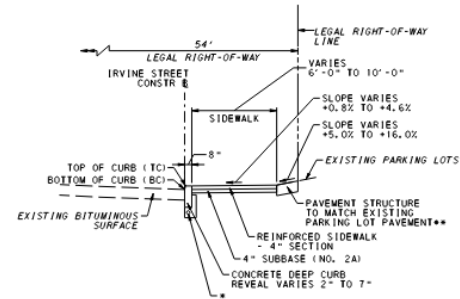


**IRVINE STREET  
SIDEWALK RECONSTRUCTION**

NOT TO SCALE

STA 103+27 TO STA 104+55  
STA 113+13 TO STA 114+32  
STA 116+52 TO STA 117+50  
STA 121+55 TO STA 122+00  
STA 129+38 TO STA 129+96

\* 4" DIAMETER MIN. PERFORATED PIPE, CLASS 1 GEOTEXTILE, 3/16" TO 1/2" THICK STYROFOAM, AND 2A AGGREGATE UNDERDRAIN ARE INCIDENTAL TO CONCRETE DEEP CURB (SEE CITY OF PITTSBURGH STANDARD SPECIFICATIONS FOR MATERIALS AND CONSTRUCTION).

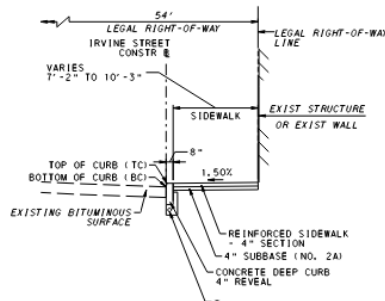


**IRVINE STREET  
SIDEWALK RECONSTRUCTION**

NOT TO SCALE

STA 107+96 TO STA 109+08  
STA 110+84 TO STA 112+59  
STA 114+32 TO STA 115+11  
STA 117+50 TO STA 118+34  
STA 120+28 TO STA 121+55  
STA 126+71 TO STA 127+07  
STA 129+96 TO STA 131+31

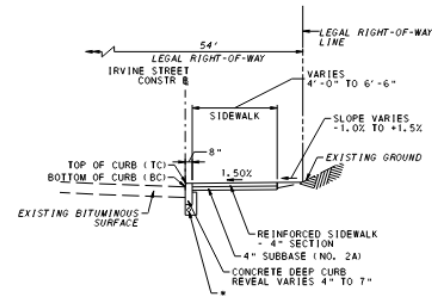
\*\* FOR GRAVEL LOTS, PROVIDE 2" VERTICAL DISTANCE BETWEEN BACK OF SIDEWALK AND GRAVEL LOT



**IRVINE STREET  
SIDEWALK RECONSTRUCTION**

NOT TO SCALE

STA 102+97.5 TO STA 105+27  
STA 104+54 TO STA 105+15  
STA 106+86 TO STA 106+11  
STA 106+50 TO STA 106+95  
STA 109+08 TO STA 109+55  
STA 116+10 TO STA 116+52



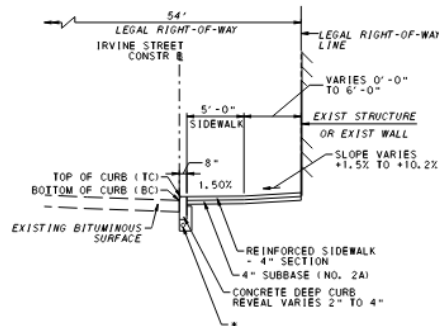
**IRVINE STREET  
SIDEWALK RECONSTRUCTION**

NOT TO SCALE

STA 107+48 TO STA 107+96  
STA 109+84 TO STA 110+64  
STA 118+85 TO STA 120+28  
STA 123+12 TO STA 125+41  
STA 131+31 TO STA 136+86  
STA 140+00 TO STA 141+19  
STA 141+21 TO STA 144+90  
STA 145+40 TO STA 148+85  
STA 150+15 TO STA 152+99  
STA 153+21 TO STA 155+54  
+89 TO STA 155+93

NOT TO SCALE

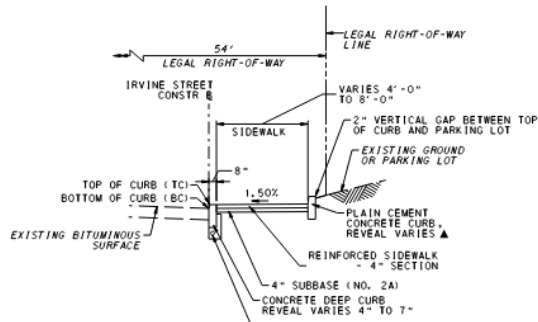
# TYPICAL SECTIONS



## IRVINE STREET SIDEWALK RECONSTRUCTION

NOT TO SCALE  
STA 136+86 TO STA 138+94  
STA 139+35 TO STA 140+00

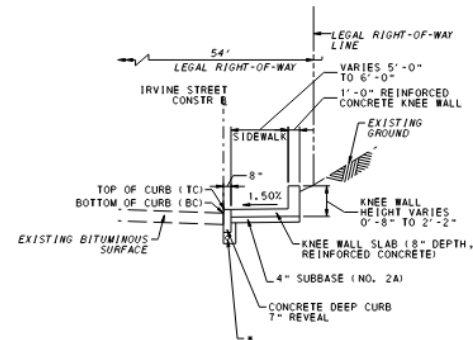
\* 4" DIAMETER MIN. PERFORATED PIPE, CLASS 1 GEOTEXTILE, 3/16" TO 1/2" THICK STYROFOAM, AND 2A AGGREGATE UNDERDRAIN ARE INCIDENTAL TO CONCRETE DEEP CURB (SEE CITY OF PITTSBURGH STANDARD SPECIFICATIONS FOR MATERIALS AND CONSTRUCTION).



## IRVINE STREET SIDEWALK RECONSTRUCTION

NOT TO SCALE  
STA 109+55 TO STA 109+84  
STA 110+64 TO STA 110+84  
STA 118+59 TO STA 118+85  
STA 125+41 TO STA 126+71  
STA 138+94 TO STA 139+35  
STA 152+99 TO STA 153+21  
STA 153+54 TO STA 153+89

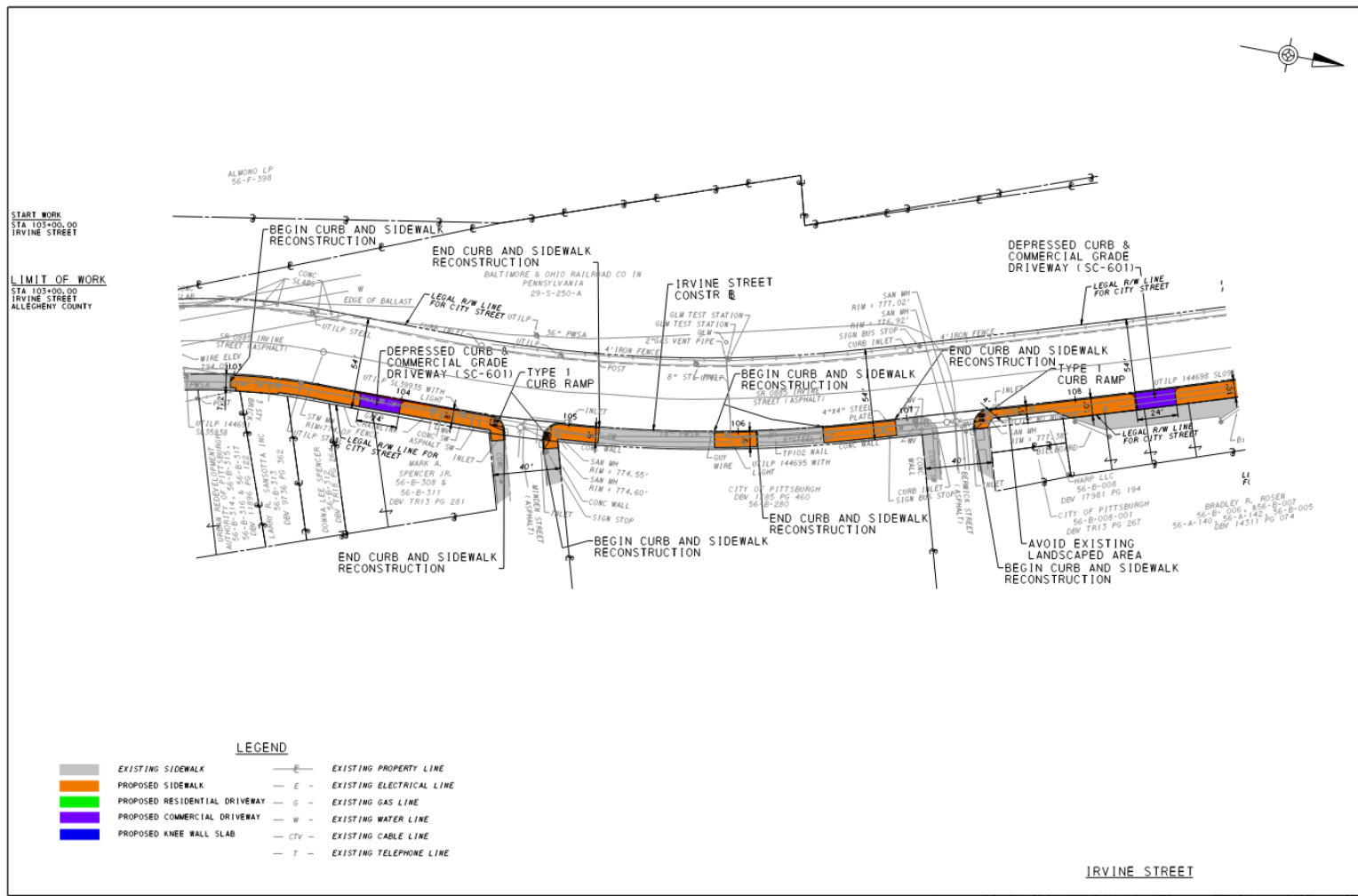
▲ 8" REVEAL - STA 109+55 TO STA 109+84  
8" REVEAL - STA 110+64 TO STA 110+84  
8" REVEAL - STA 118+59 TO STA 118+85  
2" REVEAL - STA 125+41 TO STA 126+71  
2" REVEAL - STA 138+94 TO STA 139+35  
8" REVEAL - STA 152+99 TO STA 153+21  
8" REVEAL - STA 153+54 TO STA 153+89



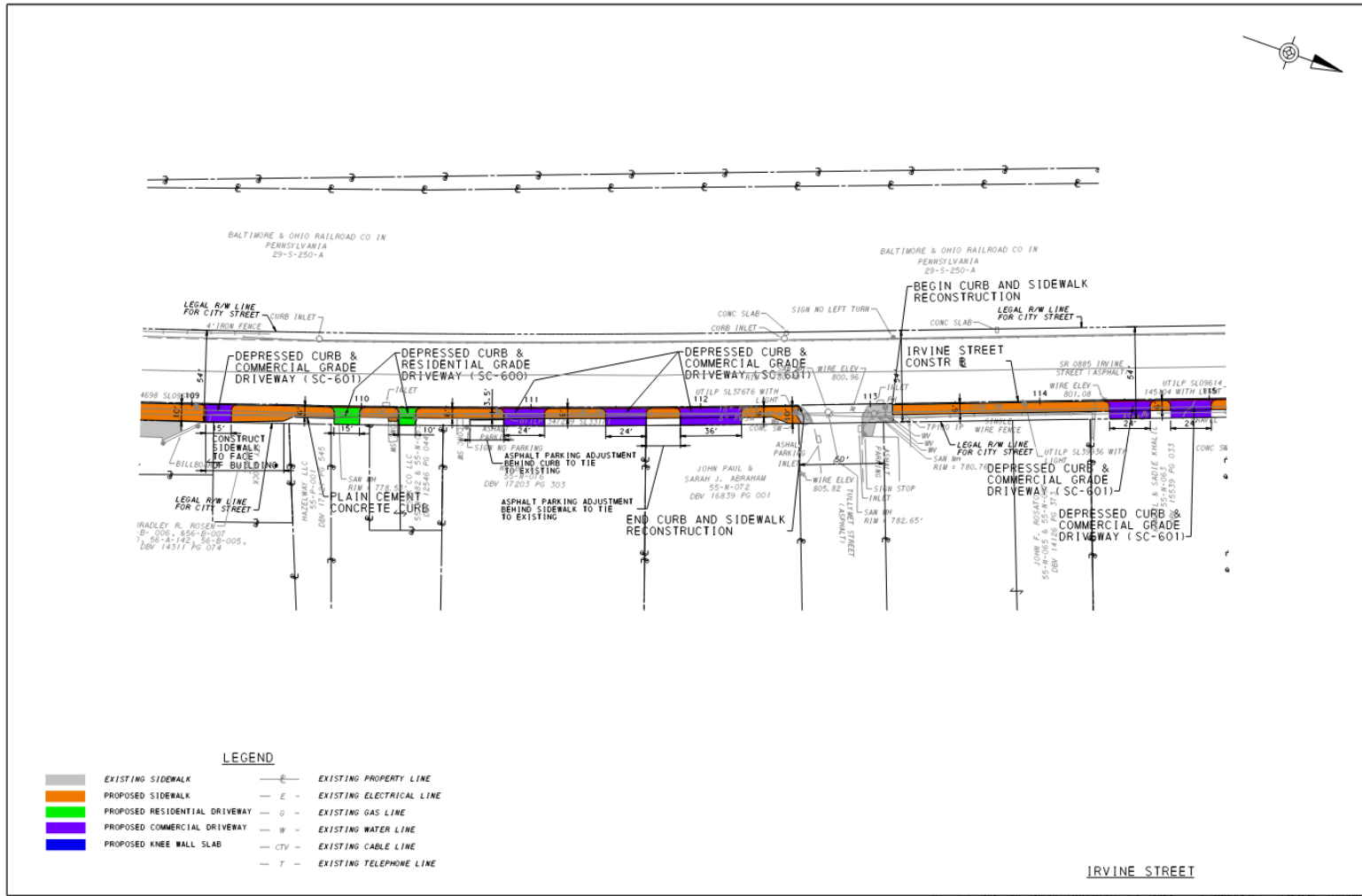
## IRVINE STREET SIDEWALK RECONSTRUCTION

NOT TO SCALE  
STA 141+19 TO STA 141+27  
STA 144+90 TO STA 145+40  
STA 148+85 TO STA 150+15

# ROADWAY PLAN

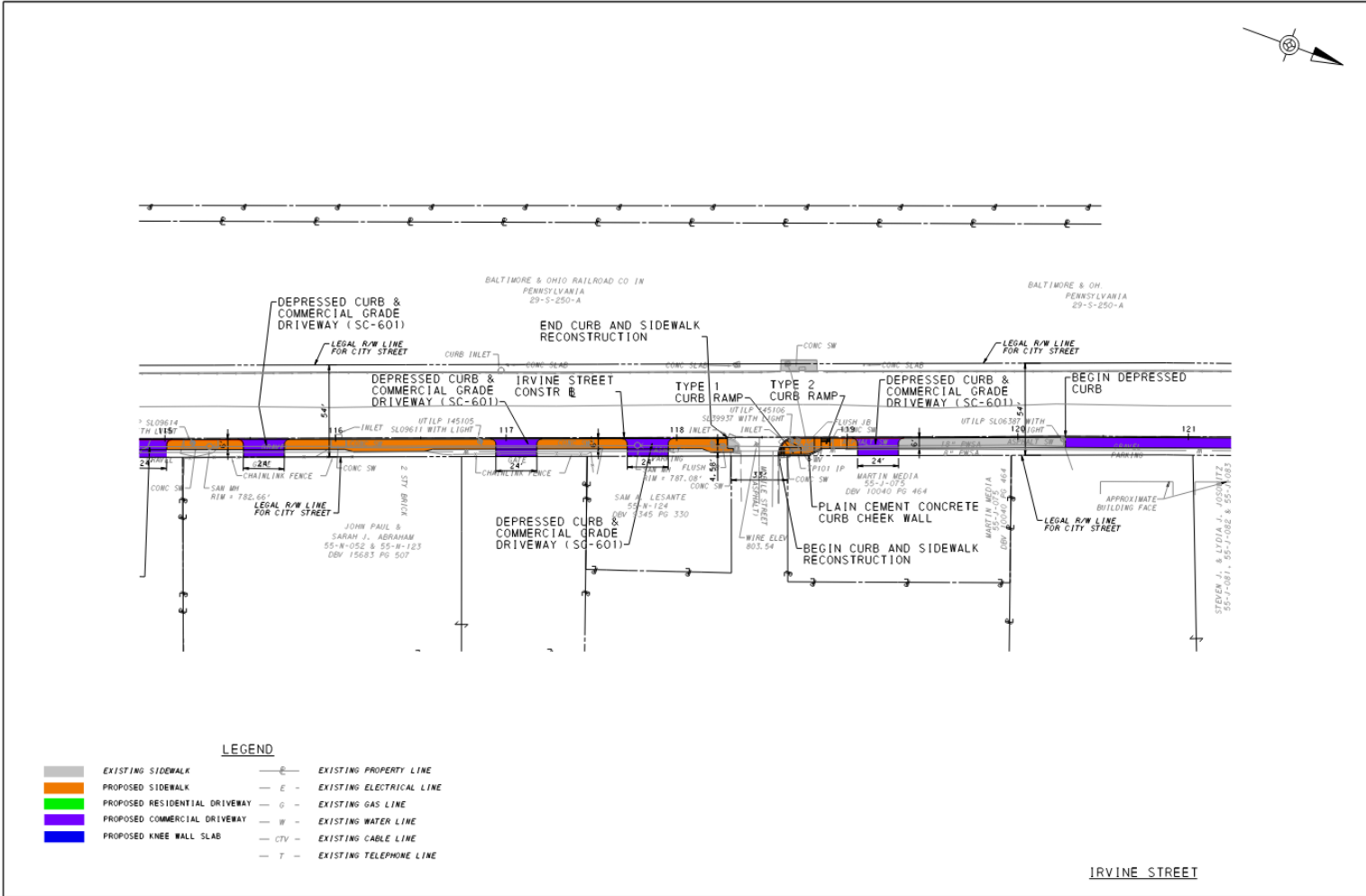


# ROADWAY PLAN

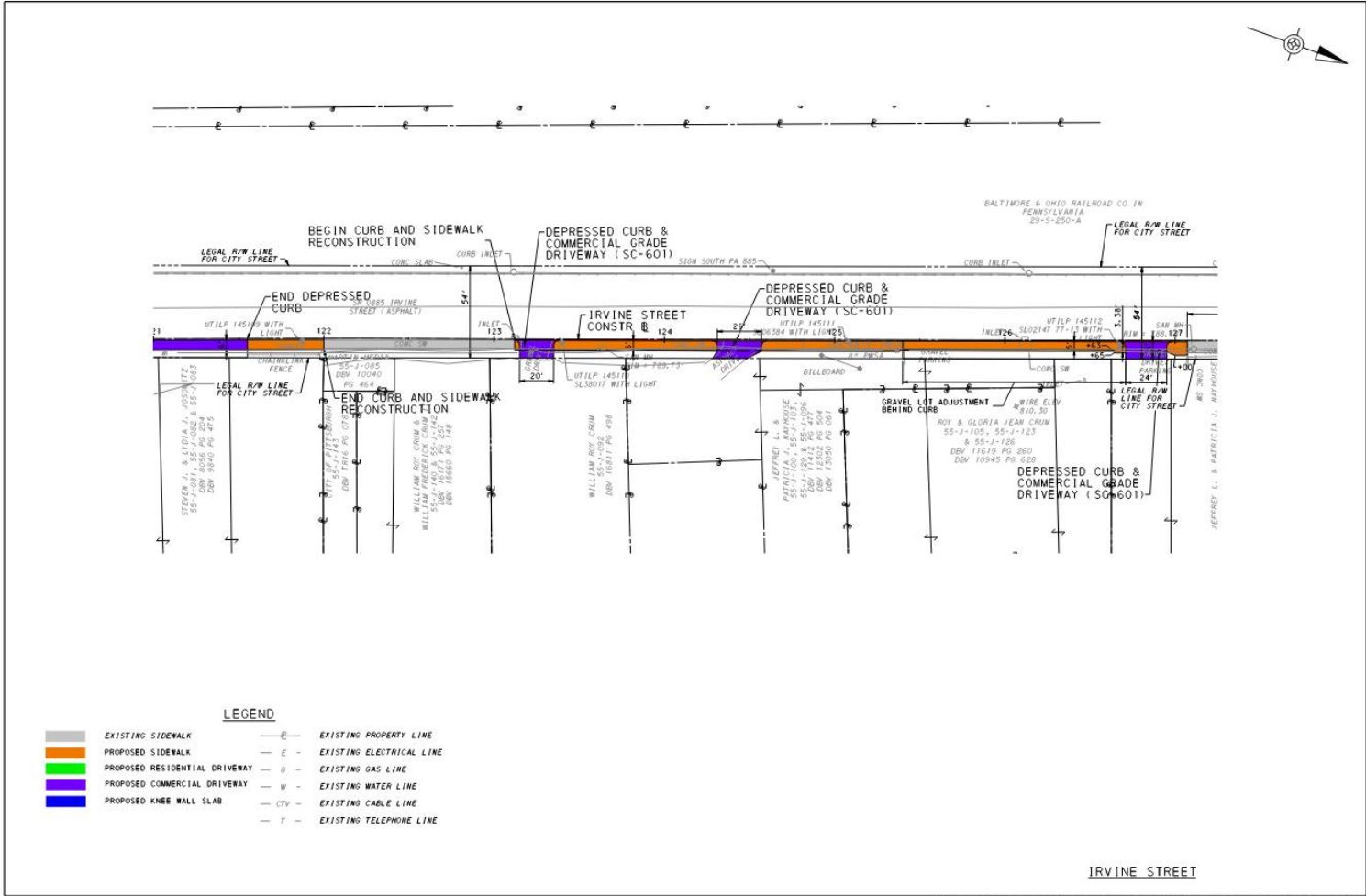




# ROADWAY PLAN



# ROADWAY PLAN

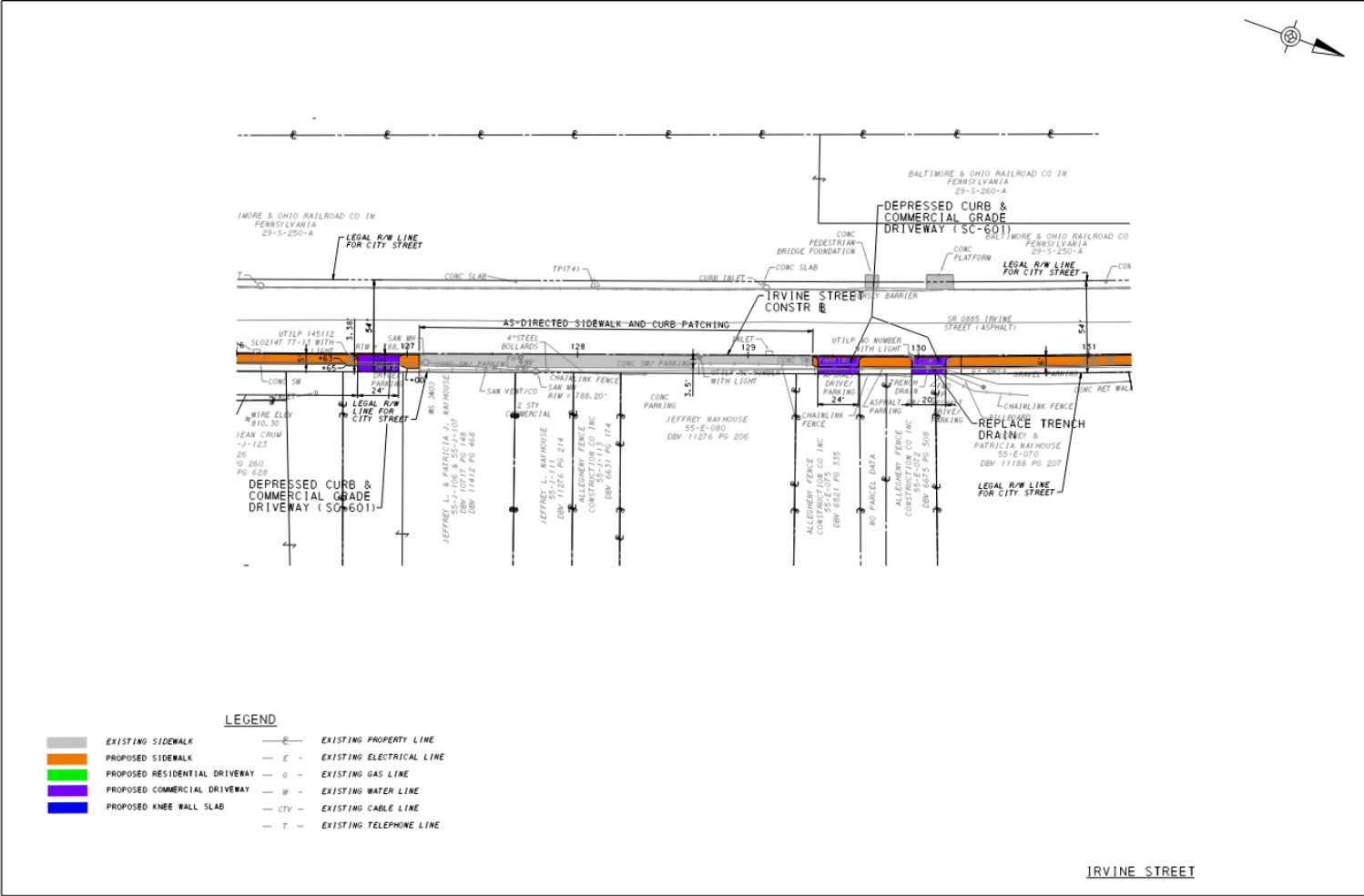


**SAI Consulting Engineers**

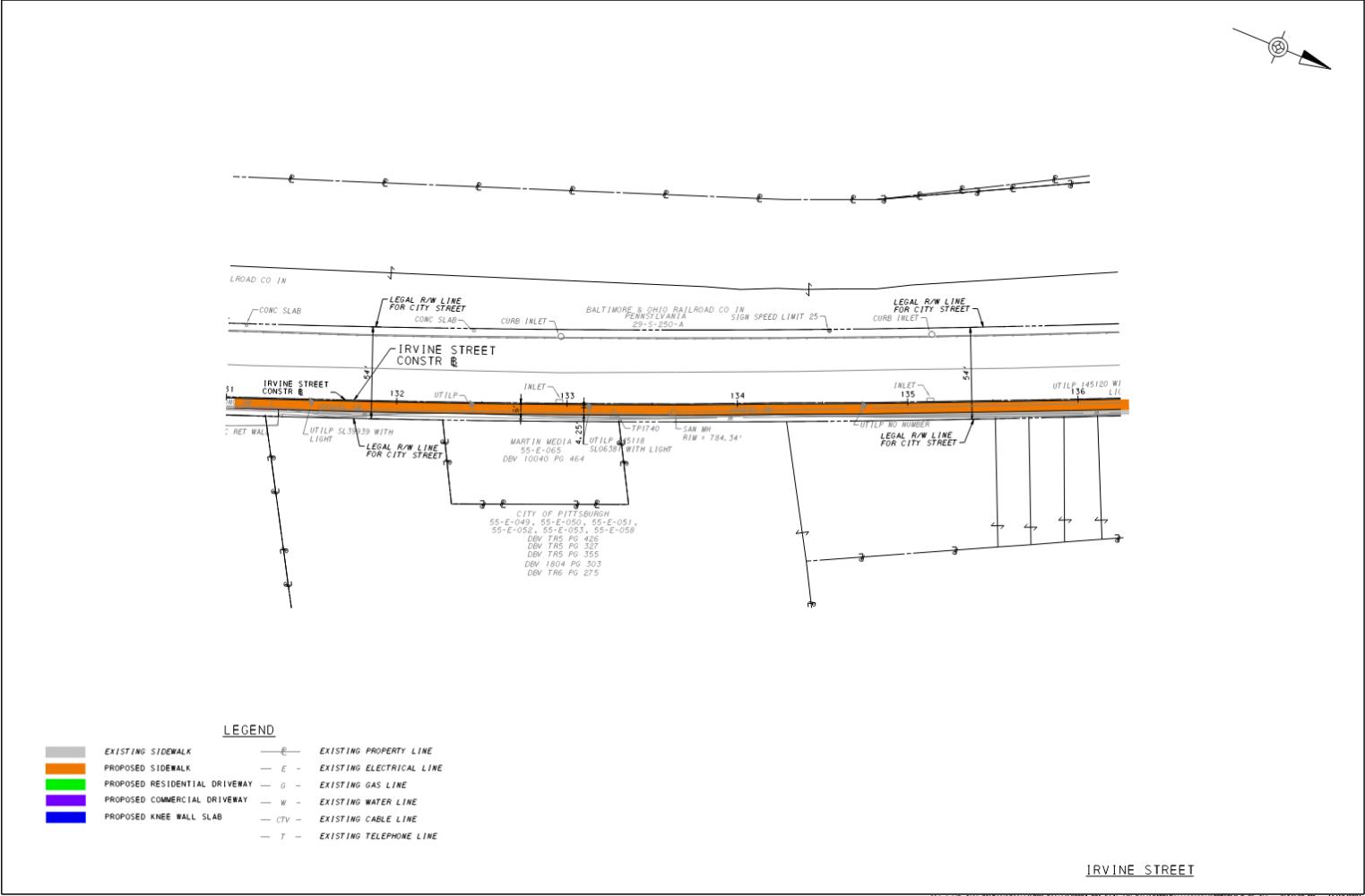


**CITY OF PITTSBURGH**

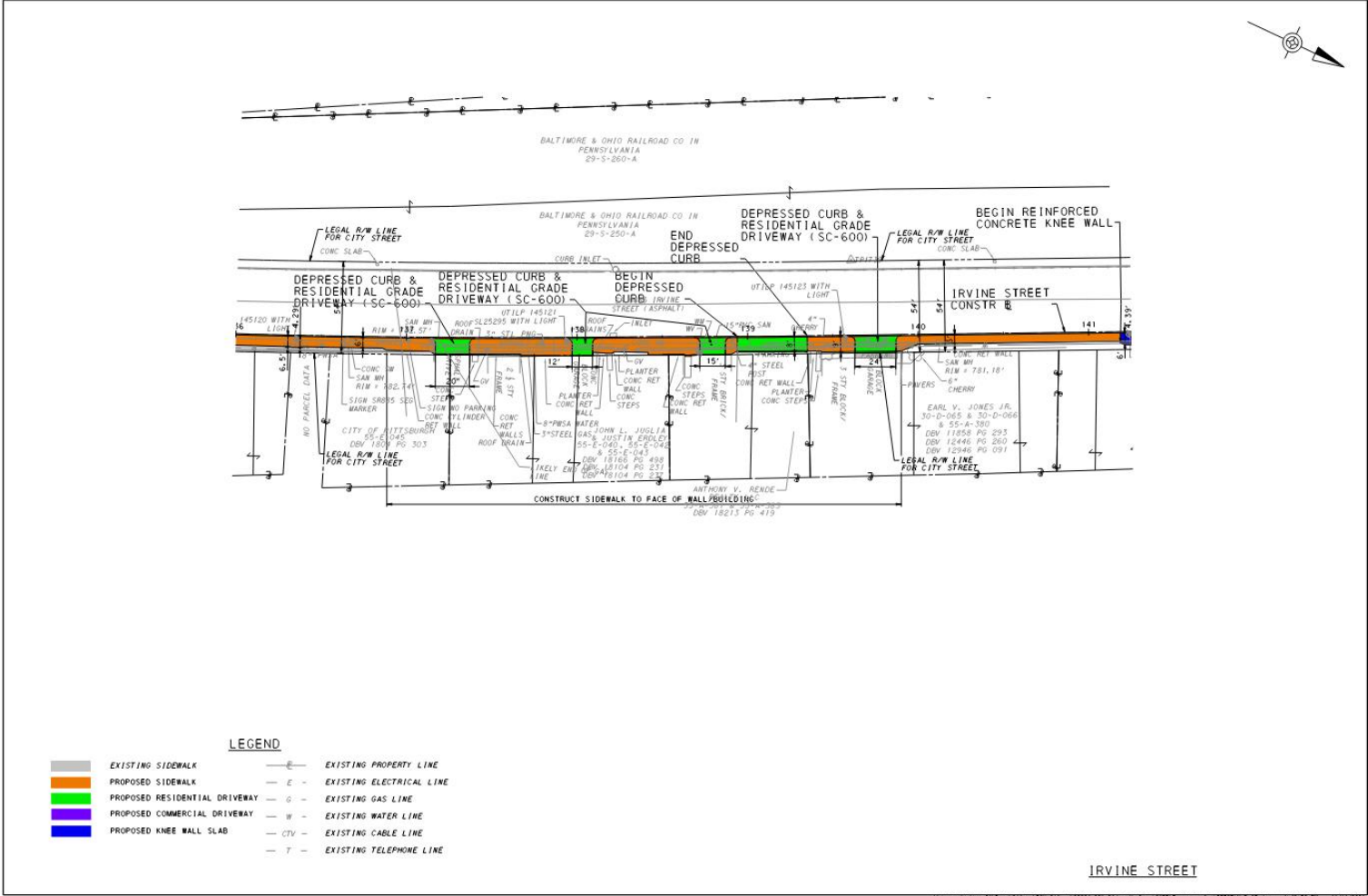
# ROADWAY PLAN



# ROADWAY PLAN

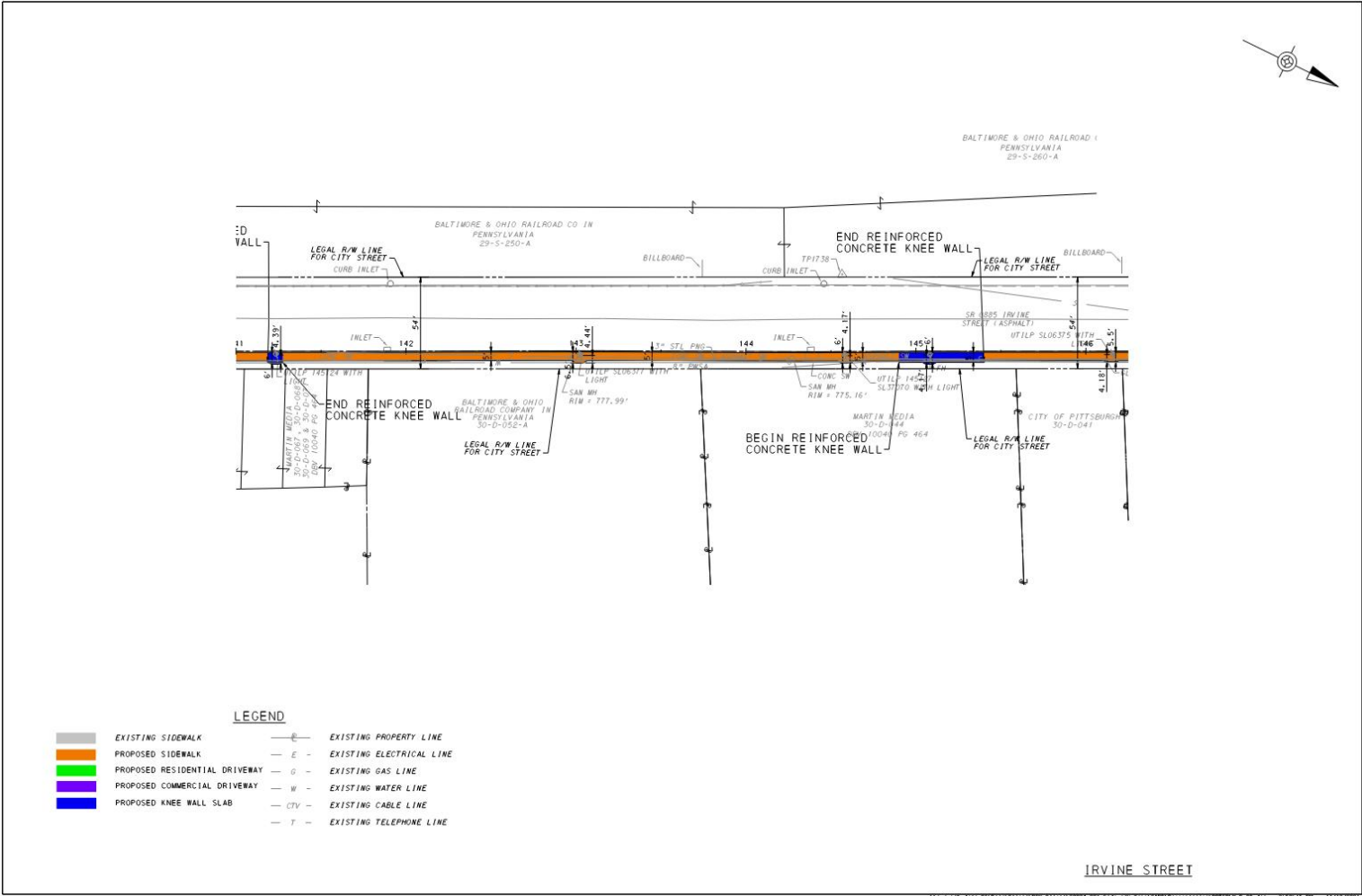


# ROADWAY PLAN

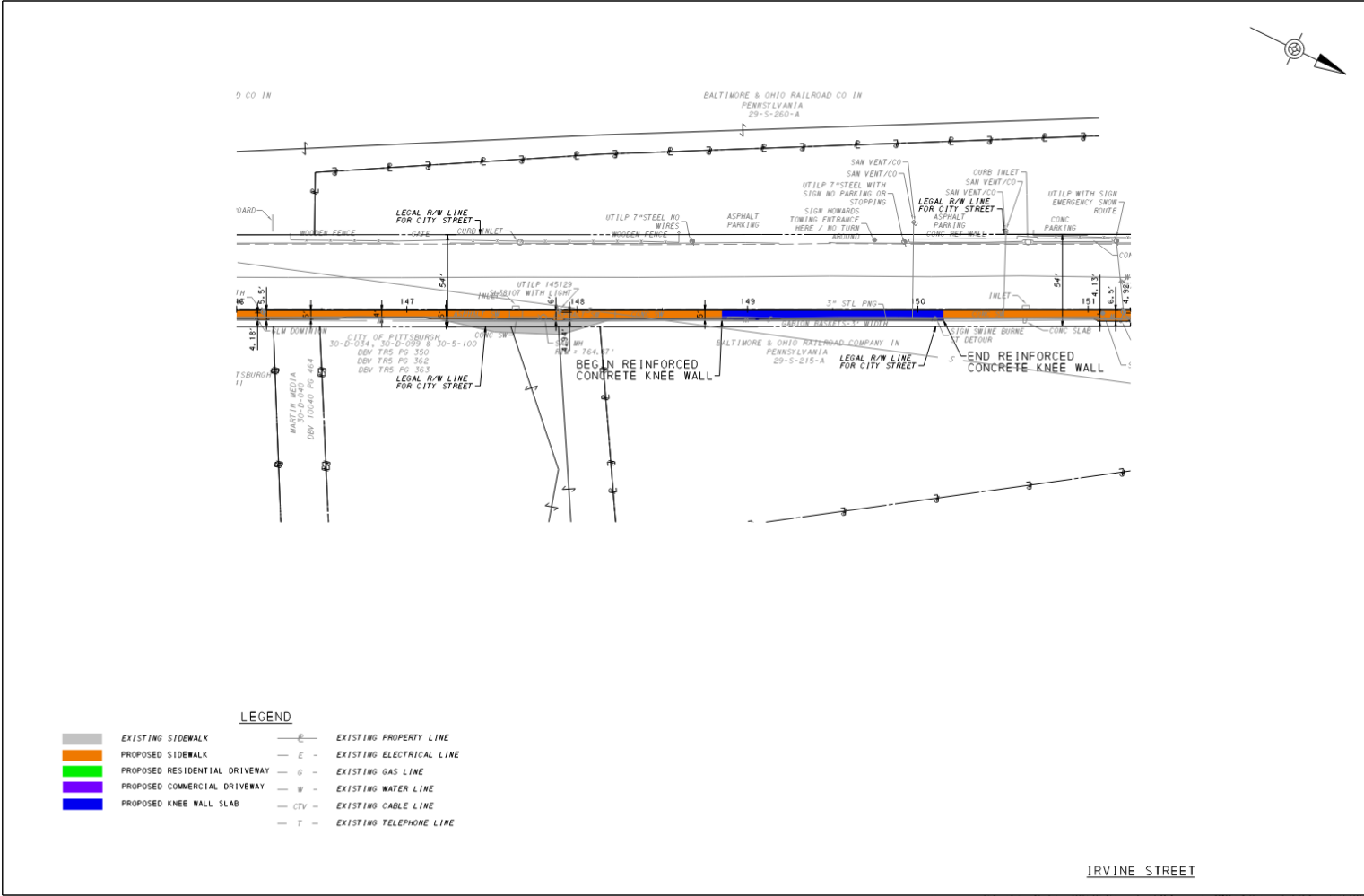




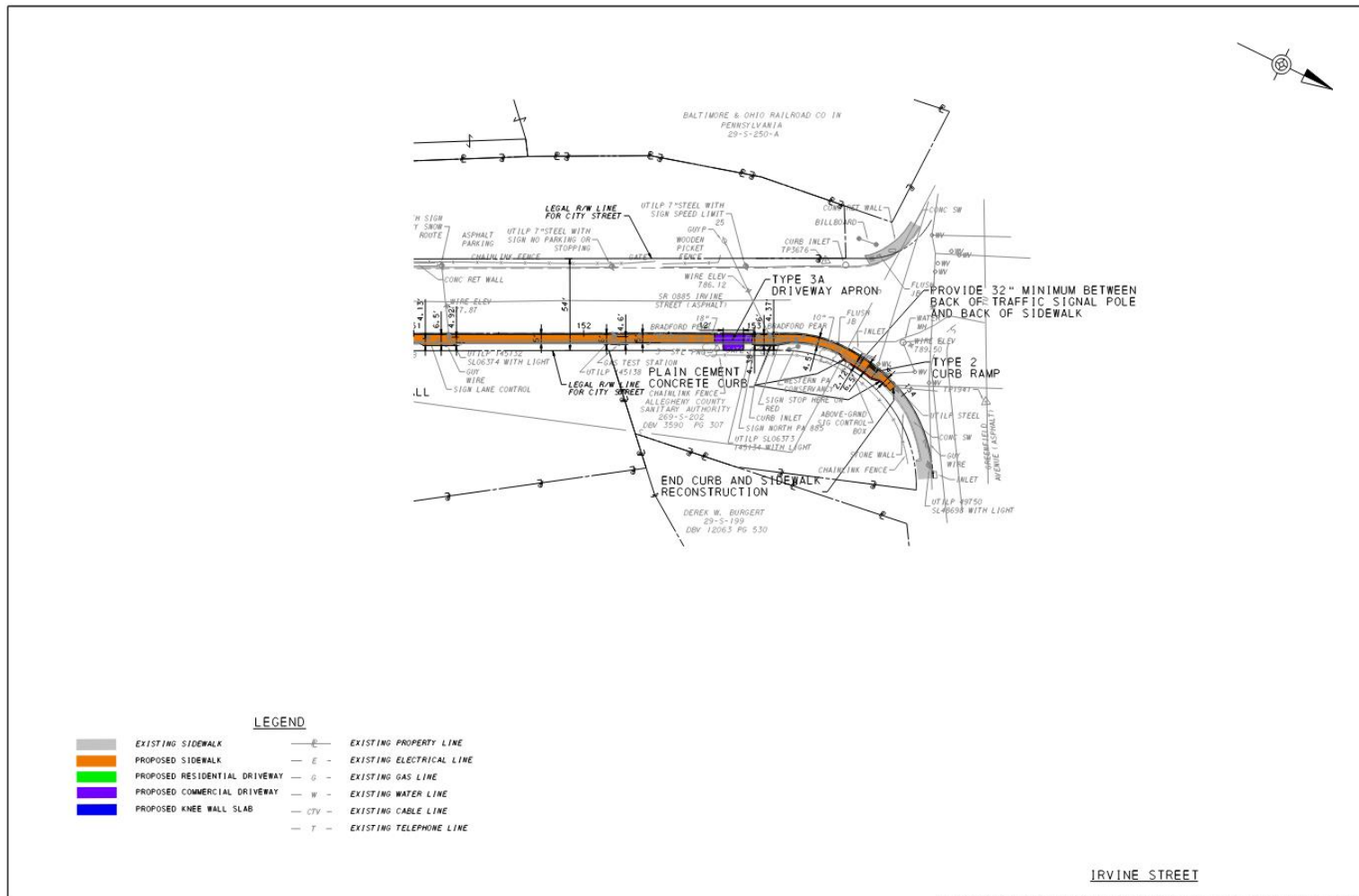
# ROADWAY PLAN



# ROADWAY PLAN



# ROADWAY PLAN



## ➤ ANTICIPATED SCHEDULE

<b>City of Pittsburgh Sidewalk Gaps PE/FD <u>ANTICIPATED PROJECT SCHEDULE</u></b>	
<b>PRELIMINARY DESIGN</b>	<b>SUMMER 2021</b>
<b>FINAL DESIGN</b>	<b>FALL 2021</b>
<b>CONSTRUCTION</b>	<b>SPRING 2022 THRU WINTER</b>

- Construction schedule is currently being developed, actual dates have not been established
- Anticipated construction duration 7 months